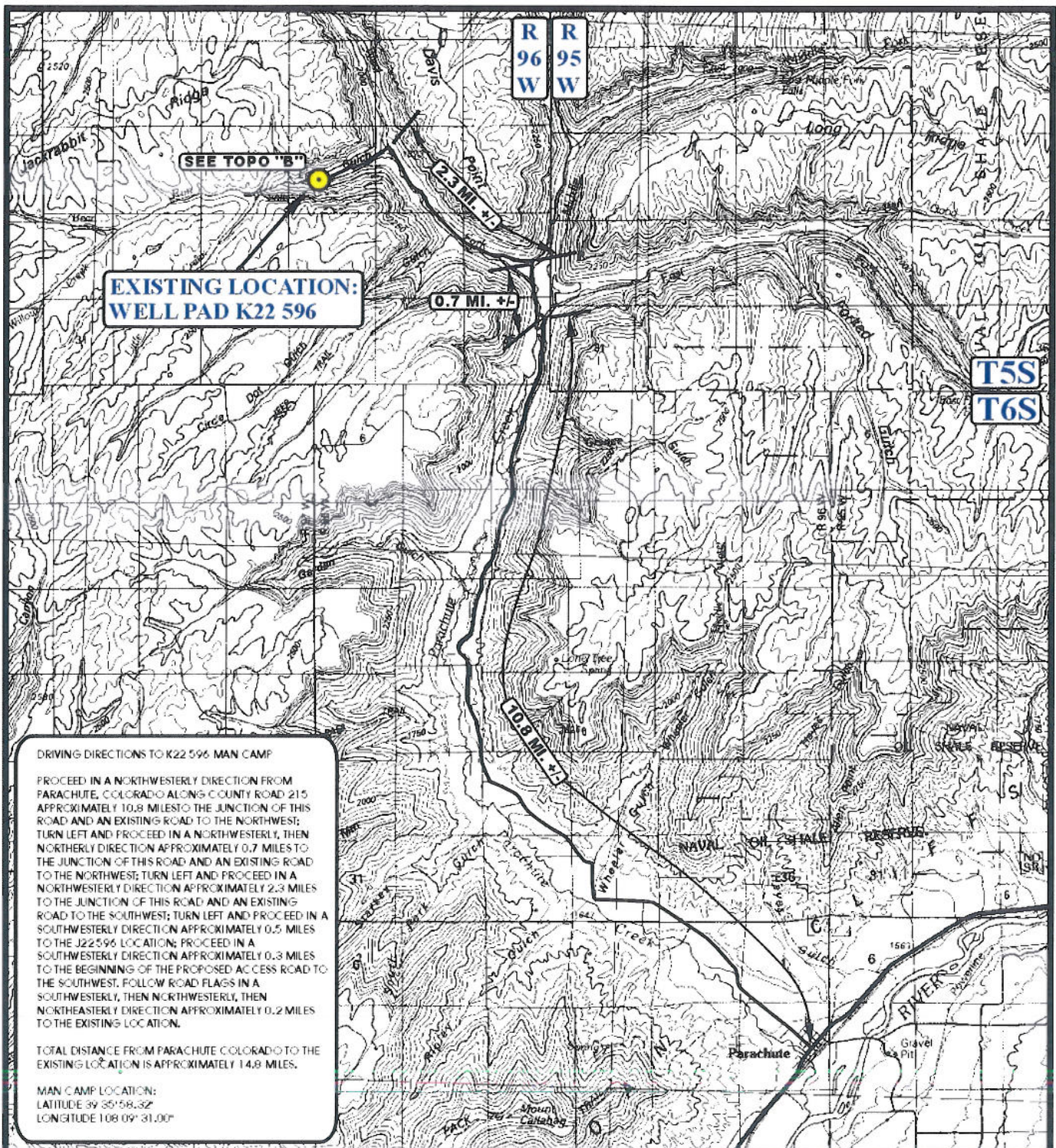


ACCESS ROAD MAP



LEGEND:

PROPOSED LOCATION

EnCana OIL & GAS (USA) INC.

WELL PAD K22 596

SECTION 22, T5S, R96W, 6th P.M.

NE 1/4 SW 1/4

SHEET 8 of 11



Uintah Engineering & Land Surveying
85 South 200 East Vernal, Utah 84078
(435) 789-1017 * FAX (435) 789-1813



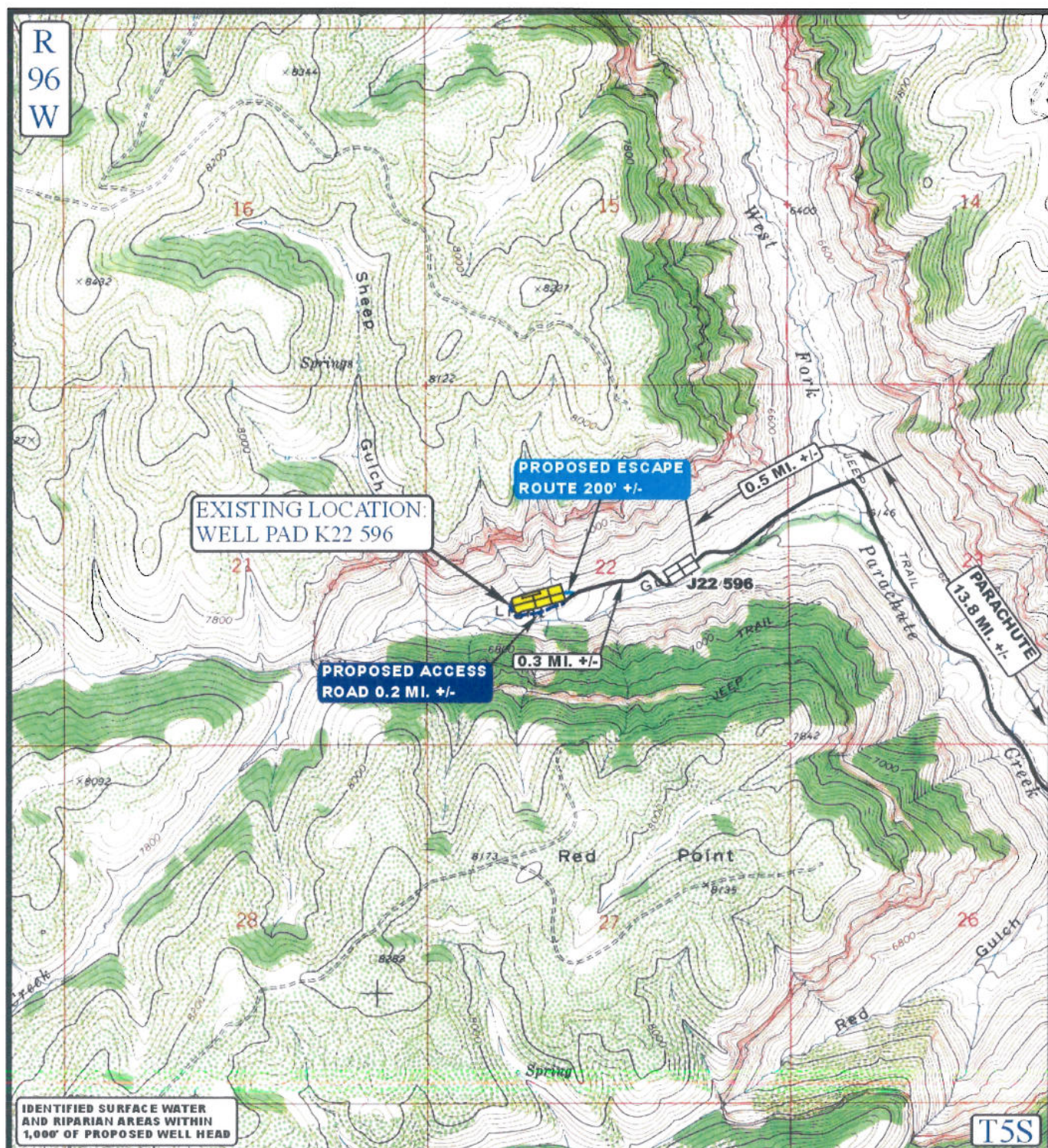
**TOPOGRAPHIC
MAP**

6 19 07
MONTH DAY YEAR

SCALE: 1:100,000 DRAWN BY: J.L.G. REVISED: 8-26-09



ACCESS ROAD MAP



LEGEND:

----- PROPOSED ACCESS ROAD
 ===== EXISTING ROAD

EnCana OIL & GAS (USA) INC.

WELL PAD K22 596
SECTION 22, T5S, R96W, 6th P.M.
NE 1/4 SW 1/4
SHEET 9 of 11



Utah Engineering & Land Surveying
85 South 200 East Vernal, Utah 84078
(435) 789-1017 * FAX (435) 789-1813



TOPOGRAPHIC
MAP

6 MONTH
19 DAY
07 YEAR

B
TOPO

SCALE: 1" = 2000' DRAWN BY: J.L.G. REVISED: 8-26-09