

LEGEND:

----- PROPOSED ACCESS ROAD
 ————— EXISTING ROAD

EnCana OIL & GAS (USA) INC.

WELL PAD K22 596
 SECTION 22, T5S, R96W, 6th P.M.
 NE 1/4 SW 1/4
 SHEET 9 of 11



Uintah Engineering & Land Surveying
 85 South 200 East Vernal, Utah 84078
 (435) 789-1017 * FAX (435) 789-1813

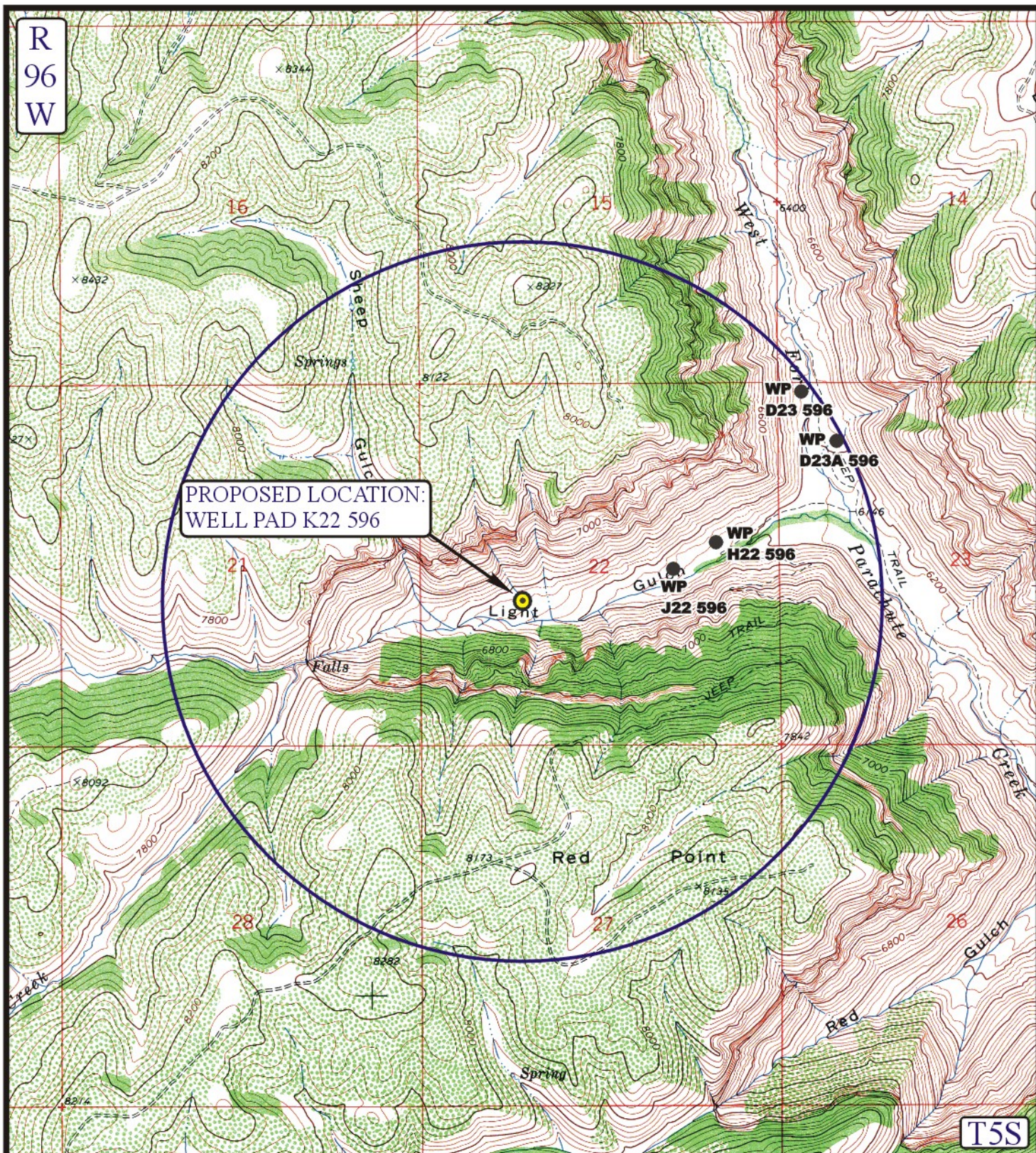


**TOPOGRAPHIC
 MAP**

6 1907
 MONTH DAY YEAR

**B
 TOPO**

SCALE: 1" = 2000' DRAWN BY: J.L.G. REVISED: 8-26-09



LEGEND:

- | | |
|-------------------|-------------------------|
| ⊗ DISPOSAL WELLS | ⊗ WATER WELLS |
| ● PRODUCING WELLS | ⊗ ABANDONED WELLS |
| ⊖ SHUT IN WELLS | ⊗ TEMPORARILY ABANDONED |



Uintah Engineering & Land Surveying
 85 South 200 East Vernal, Utah 84078
 (435) 789-1017 * FAX (435) 789-1813



EnCana OIL & GAS (USA) INC.

WELL PAD K22 596
 SECTION 22, T5S, R96W, 6th P.M.
 NE 1/4 SW 1/4
 SHEET 10 of 11

TOPOGRAPHIC
MAP

11 29 05
 MONTH DAY YEAR

SCALE: 1" = 2000' DRAWN BY: J.L.G. REVISED: 4-30-09

