

T5S, R96W, 6th P.M.

EnCana OIL & GAS (USA) INC.

Well location, N. PARACHUTE WF10A-21 K22 596 (SURFACE LOCATION), located as shown in the NE 1/4 SW 1/4 of Section 22, T5S, R96W, 6th P.M., Garfield County, Colorado.

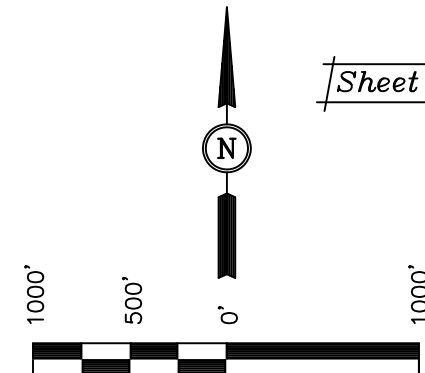
BASIS OF ELEVATION

SPOT ELEVATION AT THE NORTHWEST CORNER OF SECTION 30, T5S, R95W, 6th P.M. TAKEN FROM THE FORKED GULCH QUADRANGLE, COLORADO, GARFIELD COUNTY, 7.5 MINUTE SERIES (TOPOGRAPHICAL MAP) PUBLISHED BY THE UNITED STATES DEPARTMENT OF THE INTERIOR, GEOLOGICAL SURVEY. SAID ELEVATION IS MARKED AS BEING 5966 FEET.

BASIS OF BEARINGS

BASIS OF BEARINGS IS A G.P.S. OBSERVATION.

Sheet 1z of 11



SCALE

CERTIFICATE

THIS IS TO CERTIFY THAT THE ABOVE PLAT WAS PREPARED FROM FIELD NOTES OF ACTUAL SURVEYS MADE BY ME OR UNDER MY SUPERVISION AND THAT THE SAME ARE TRUE AND CORRECT TO THE BEST OF MY KNOWLEDGE AND BELIEF.

REGISTERED LAND SURVEYOR
REGISTRATION NO. 17492
STATE OF COLORADO

UINTAH ENGINEERING & LAND SURVEYING

85 SOUTH 200 EAST - VERNAL, UTAH 84078

(435) 789-1017

SCALE 1" = 1000'	DATE SURVEYED: 10-31-08	DATE DRAWN: 04-15-09
PARTY B.D. J.L. D.R.B.	REFERENCES G.L.O. PLAT	
WEATHER COLD	FILE EnCana OIL & GAS (USA) INC.	

LEGEND:

└─┘ = 90° SYMBOL

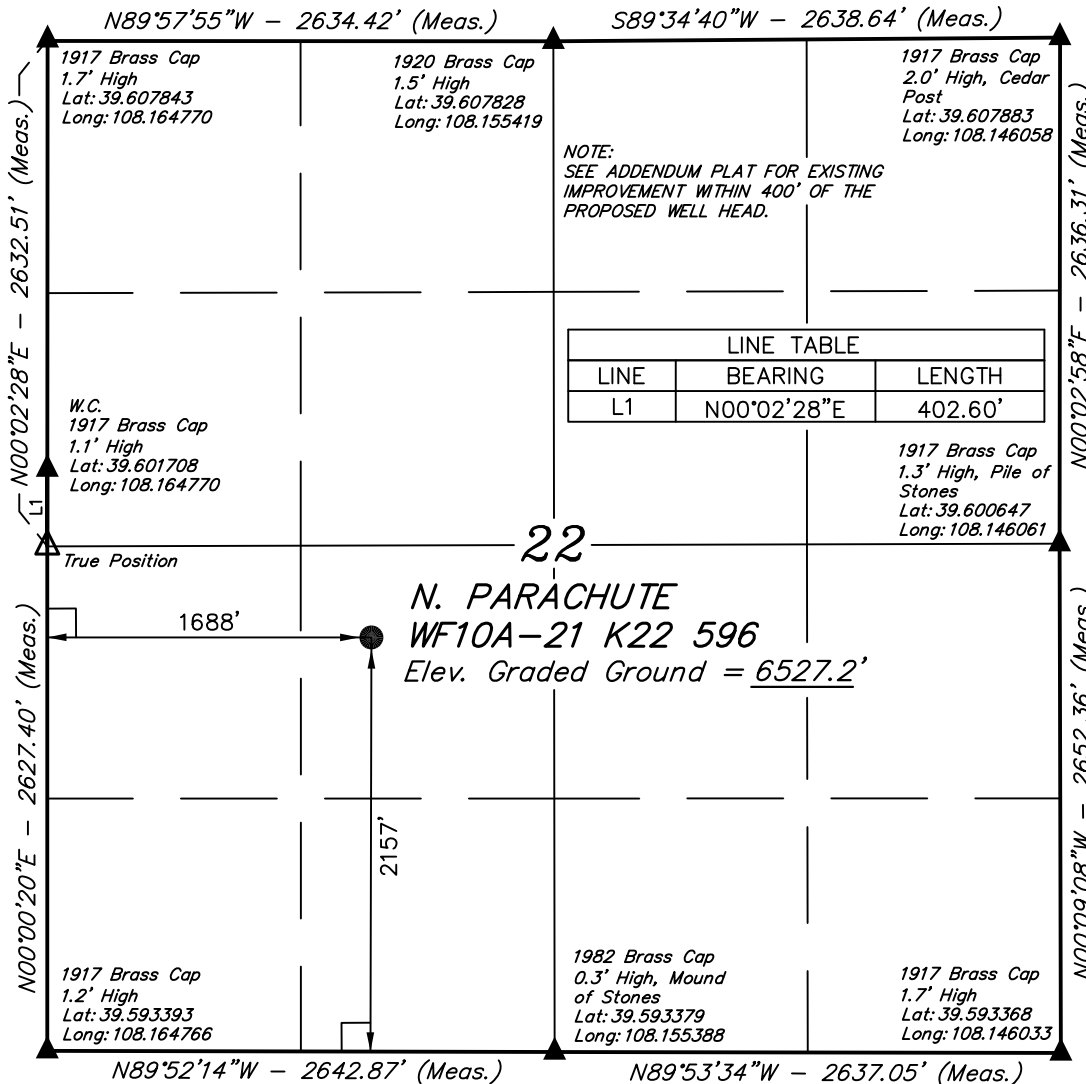
● = PROPOSED WELL HEAD.

▲ = SECTION CORNERS LOCATED.

NOTE:
THE PROPOSED BOTTOM HOLE FOR THIS WELL IS LOCATED IN THE NW 1/4 SE 1/4 OF SECTION 21, T5S, R96W, 6th P.M. AT A DISTANCE OF 2484' FSL 2004' FEL. IT BEARS N84°53'30"W 3707.01' FROM THE PROPOSED WELL HEAD.

PDOP = 2.6

NAD 83 (SURFACE LOCATION)
LATITUDE = 39°35'57.49" (39.599303)
LONGITUDE = 108°09'31.60" (108.158778)
NAD 27 (SURFACE LOCATION)
LATITUDE = 39°35'57.58" (39.599328)
LONGITUDE = 108°09'29.31" (108.158142)



EnCana OIL & GAS (USA) INC.

Well location, N. PARACHUTE WF10A-21 K22 596 (TARGET BOTTOM HOLE), located as shown in the NW 1/4 SE 1/4 of Section 21, T5S, R96W, 6th P.M., Garfield County, Colorado.

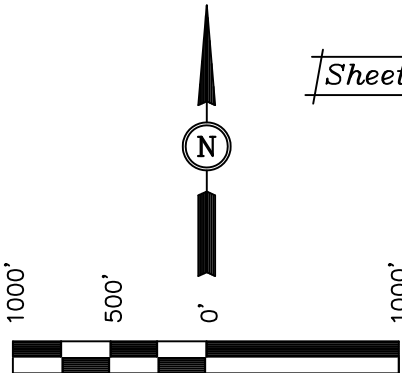
BASIS OF ELEVATION

SPOT ELEVATION AT THE NORTHWEST CORNER OF SECTION 30, T5S, R95W, 6th P.M. TAKEN FROM THE FORKED GULCH QUADRANGLE, COLORADO, GARFIELD COUNTY, 7.5 MINUTE SERIES (TOPOGRAPHICAL MAP) PUBLISHED BY THE UNITED STATES DEPARTMENT OF THE INTERIOR, GEOLOGICAL SURVEY. SAID ELEVATION IS MARKED AS BEING 5966 FEET.

BASIS OF BEARINGS

BASIS OF BEARINGS IS A G.P.S. OBSERVATION.

Sheet 1aa of 11



SCALE

CERTIFICATE

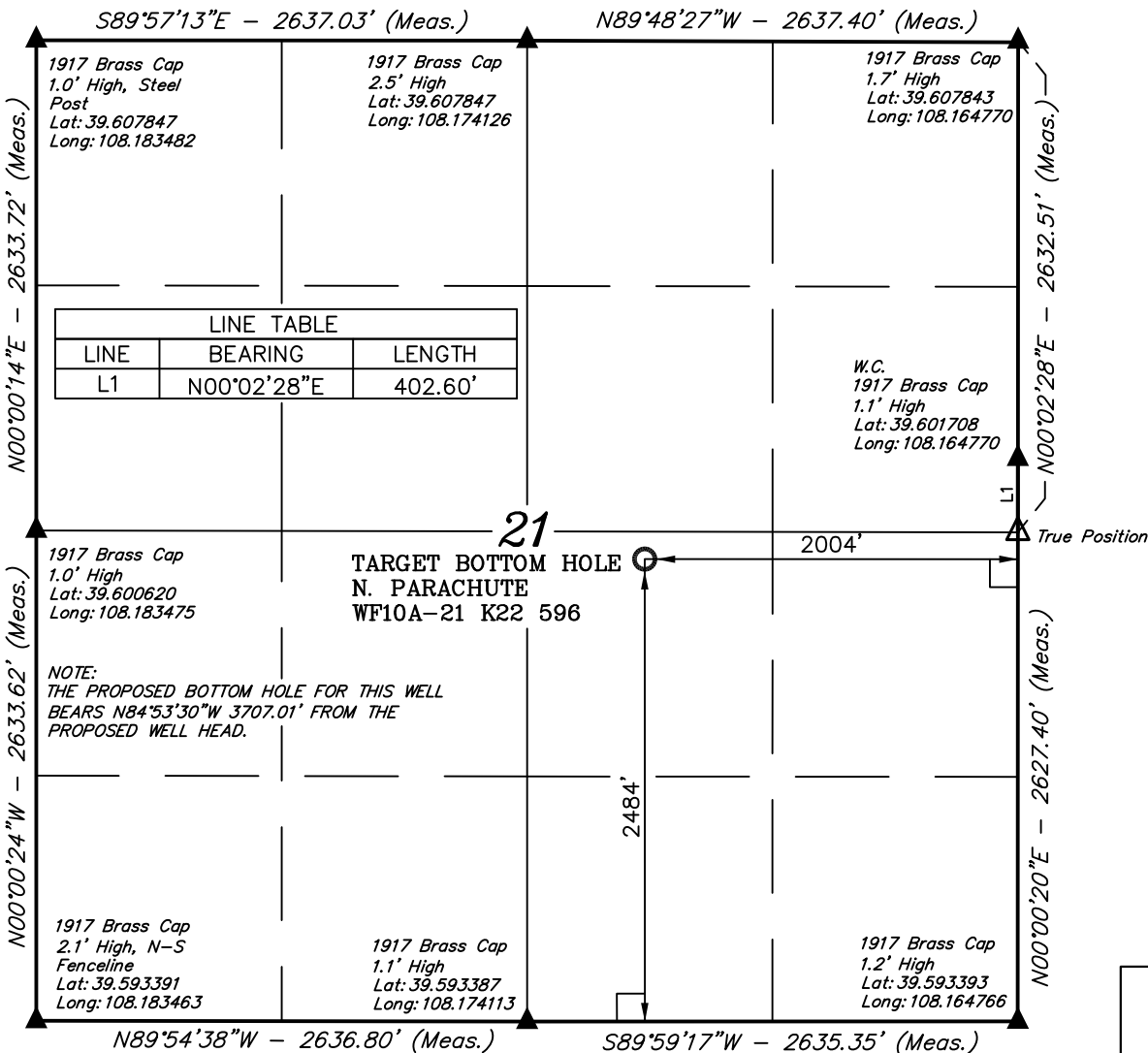
THIS IS TO CERTIFY THAT THE ABOVE PLAT WAS PREPARED FROM FIELD NOTES OF ACTUAL SURVEYS MADE BY ME OR UNDER MY SUPERVISION AND THAT THE SAME ARE TRUE AND CORRECT TO THE BEST OF MY KNOWLEDGE AND BELIEF.

REGISTERED LAND SURVEYOR
REGISTRATION NO. 17492
STATE OF COLORADO

UINTAH ENGINEERING & LAND SURVEYING
85 SOUTH 200 EAST - VERNAL, UTAH 84078
(435) 789-1017

SCALE 1" = 1000'	DATE SURVEYED: 10-31-08	DATE DRAWN: 04-15-09
PARTY B.D. J.L. D.R.B.	REFERENCES G.L.O. PLAT	
WEATHER COLD	FILE EnCana OIL & GAS (USA) INC.	

T5S, R96W, 6th P.M.



LEGEND:

- └─┘ = 90° SYMBOL
- = PROPOSED WELL HEAD.
- ▲ = SECTION CORNERS LOCATED.

NAD 83 (TARGET BOTTOM HOLE)
LATITUDE = 39°36'00.73" (39.600203)
LONGITUDE = 108°10'18.76" (108.171878)
NAD 27 (TARGET BOTTOM HOLE)
LATITUDE = 39°36'00.81" (39.600225)
LONGITUDE = 108°10'16.47" (108.171242)