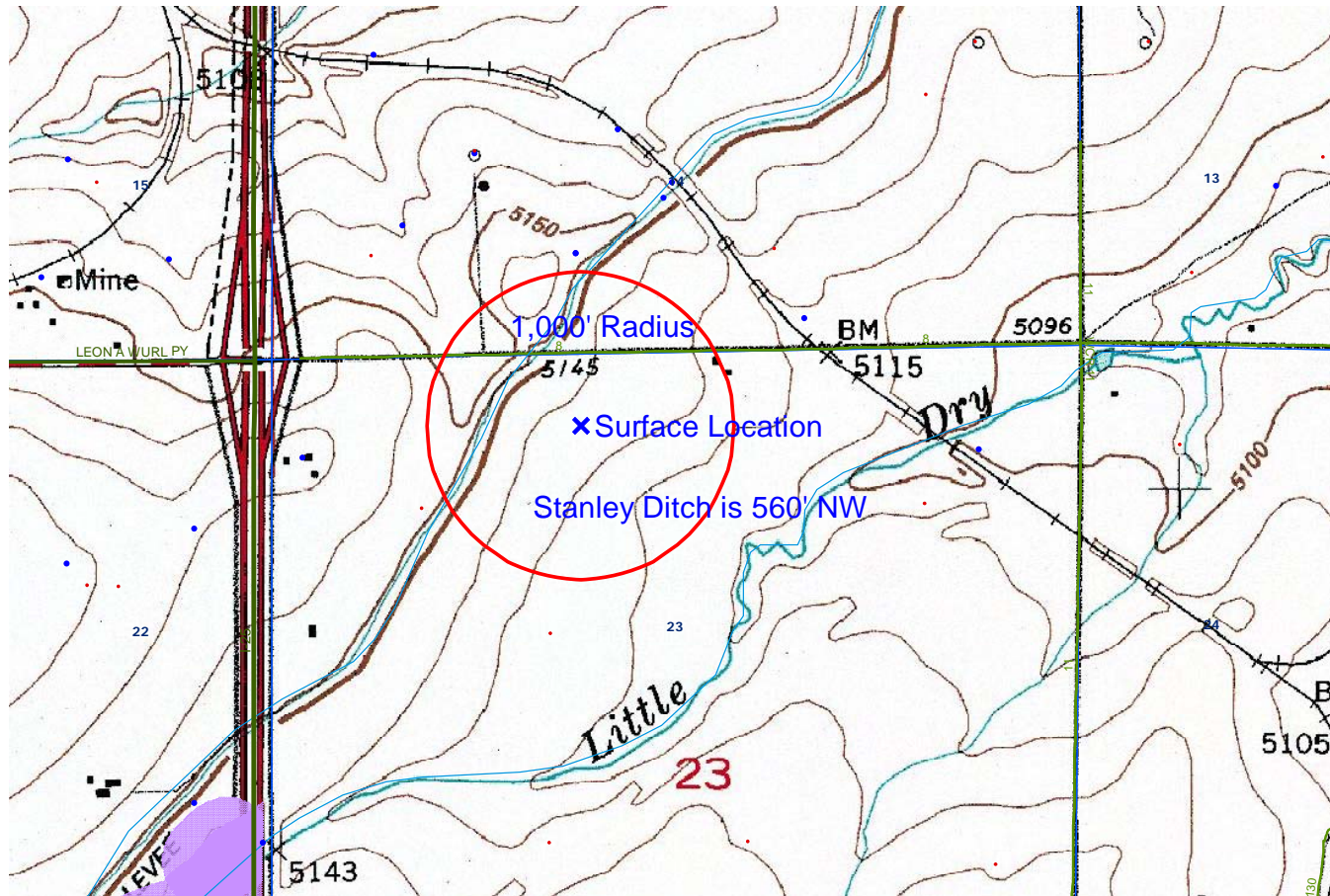


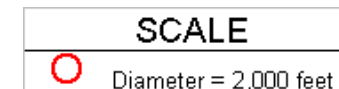
**BURY 28-23**

**TOPO**

**HYDROLOGY MAP-A**



TOWNSHIP 1 NORTH, RANGE 68 WEST

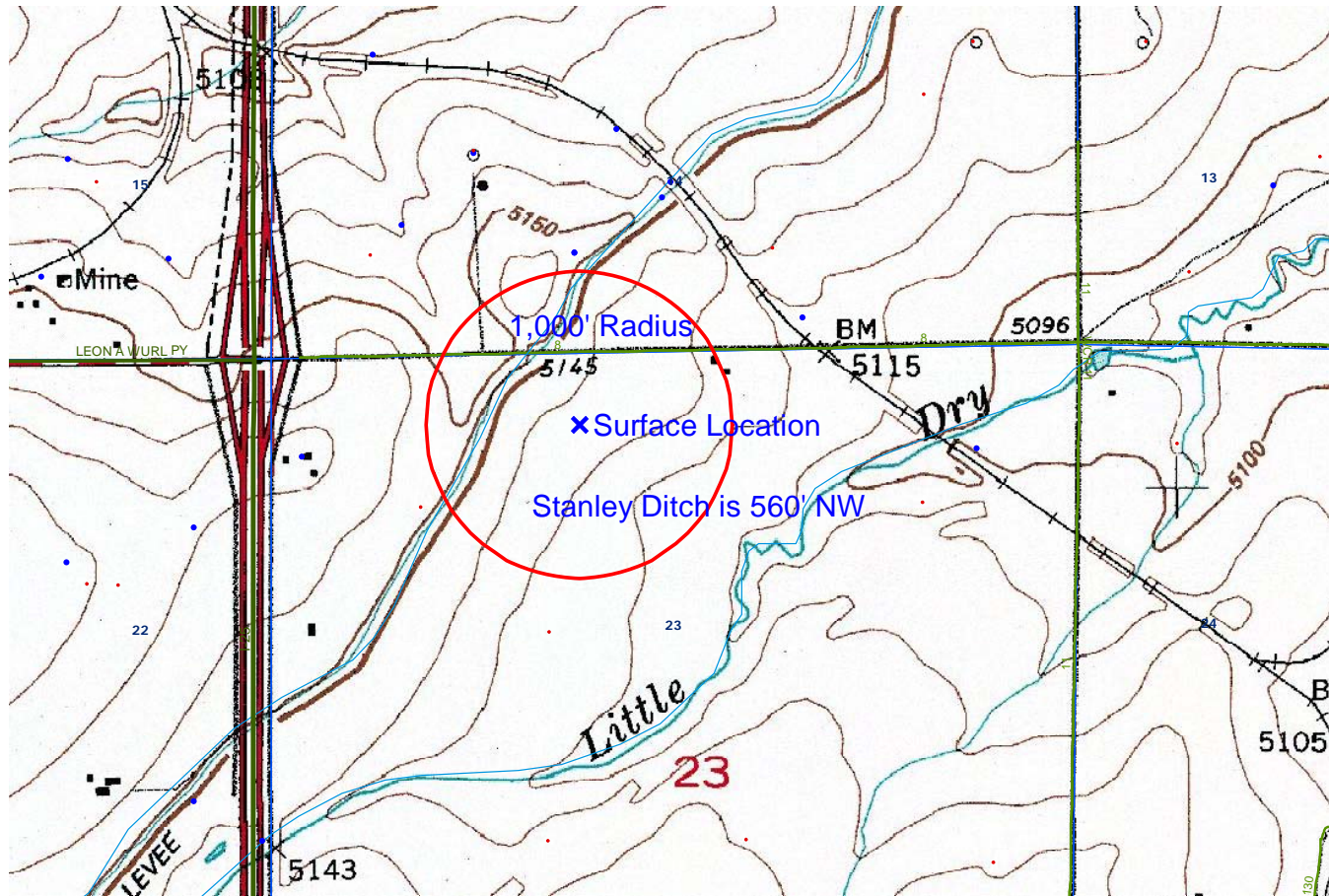


LEGEND A	LEGEND B
WATER RESOURCES	1200-SEARIES WILDLIFE AREAS
Water Wells	RSO Areas
Lakes	RSO_Osprey_Curren
Major Rivers	SWH Areas
Streams	State Wildlife Areas
300-Foot Stream Buffers	

**BURY 28-23**


**TOPO**

**HYDROLOGY MAP-B-**



TOWNSHIP 1 NORTH, RANGE 68 WEST

**SCALE**

 Diameter = 2,000 feet


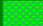

**LEGEND A**

**WATER RESOURCES**

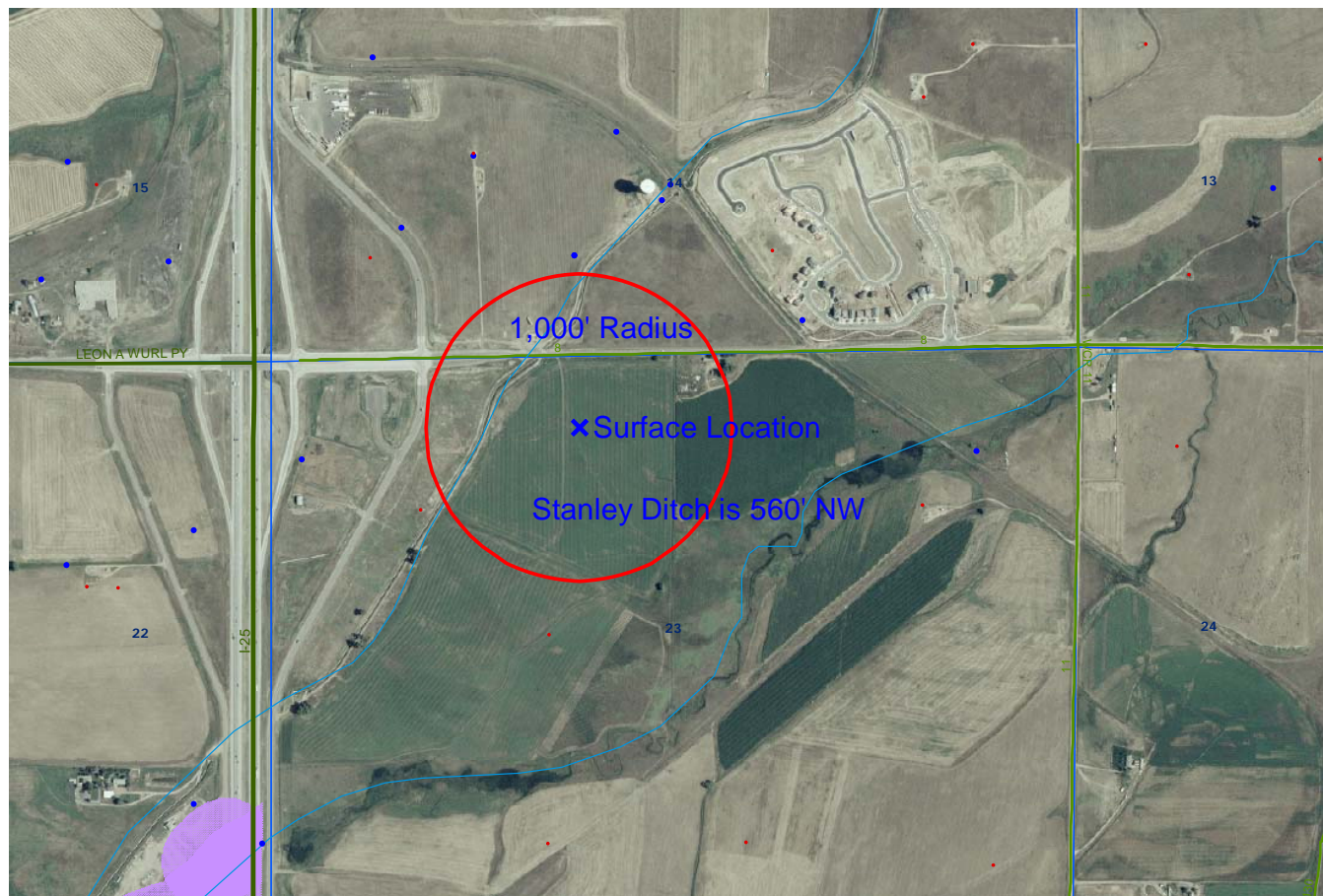
-  Water Wells
-  Lakes
-  Major Rivers
-  Streams
-  300-Foot Stream Buffers

**LEGEND B**

**1200-SEARIES WILDLIFE AREAS**

-  RSO Areas
-  RSO\_Osprey\_Curren
-  SWH Areas
-  State Wildlife Areas





TOWNSHIP 1 NORTH, RANGE 68 WEST

SCALE



Diameter = 2,000 feet

## LEGEND A

## WATER RESOURCES

- Water Wells
- Lakes
- Major Rivers
- Streams
- 300-Foot Stream Buffers

## LEGEND B


## 1200-SEARIES WILDLIFE AREAS

- RSO Areas
- RSO\_Osprey\_Curren
- SWH Areas
- State Wildlife Areas



TOWNSHIP 1 NORTH, RANGE 68 WEST

SCALE

 Diameter = 2,000 feet





## LEGEND A

## WATER RESOURCES

-  Water Wells
-  Lakes
-  Major Rivers
-  Streams
-  300-Foot Stream Buffers

## LEGEND B

## 1200-SEARIES WILDLIFE AREAS

-  RSO Areas
-  RSO\_Osprey\_Curren
-  SWH Areas
-  State Wildlife Areas