

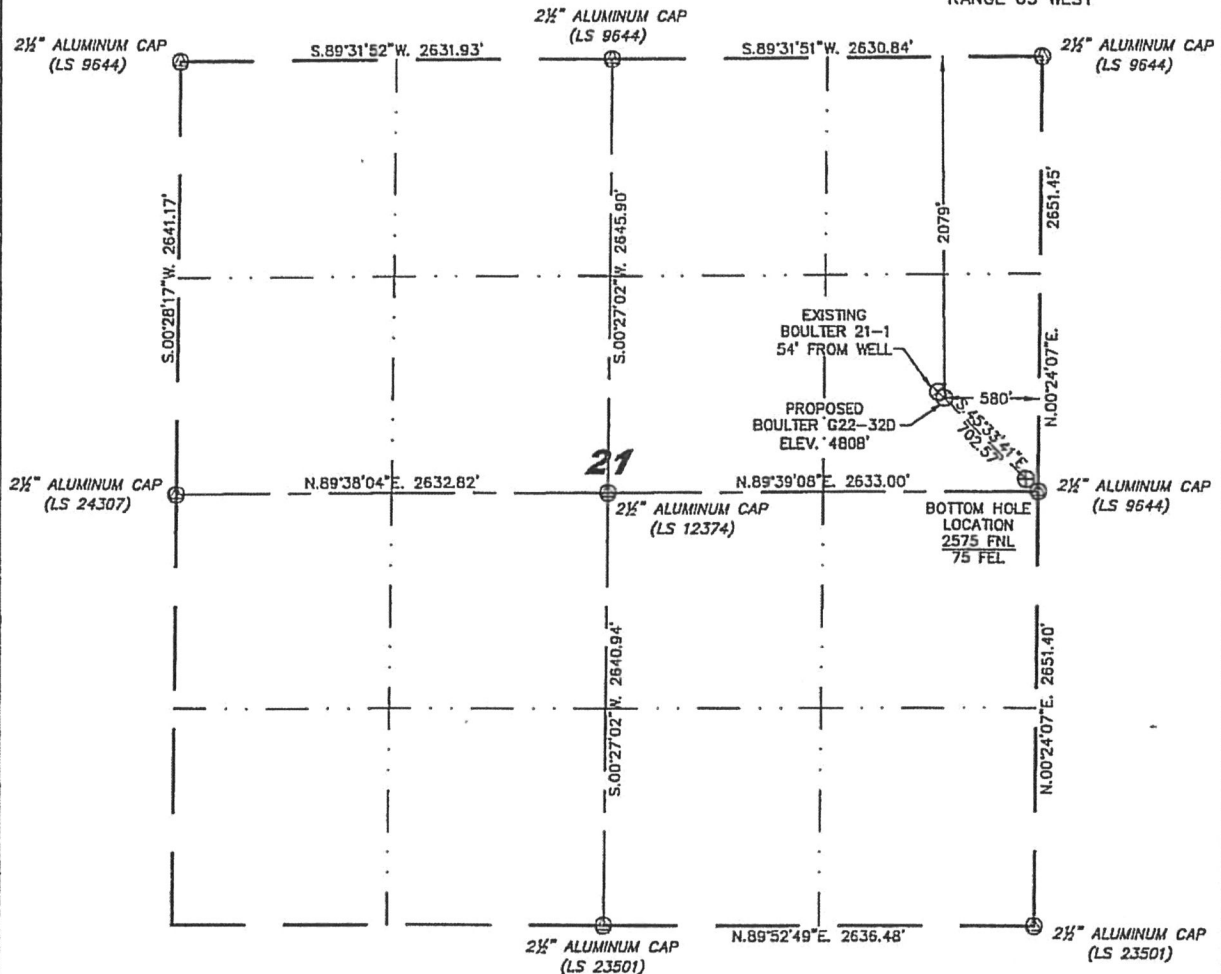
Stell Surveying Services, LLC

1102 West 19th Street P.O. BOX 2073

Cheyenne, Wyoming 82009

WELL LOCATION CERTIFICATE  
THIS MAP DOES NOT REPRESENT A BOUNDARY SURVEY

SECTION 21  
TOWNSHIP 4 NORTH  
RANGE 65 WEST



0 1000

Scale: 1" = 1000'

IN ACCORDANCE WITH A REQUEST FROM BRENT SMANSKI - NOBLE ENERGY INC., STELL SURVEYING SERVICES, LLC HAS DETERMINED THE LOCATION OF THE BOULTER G22-320 WELL TO BE 2079' FNL 580' FEL, AS MEASURED AT NINETY (90) DEGREES FROM THE SECTION LINES, SECTION 21, TOWNSHIP 4 NORTH, RANGE 65 WEST, 6TH PRINCIPLE MERIDIAN, WELD COUNTY, COLORADO.

I HEREBY CERTIFY THAT THIS WELL LOCATION CERTIFICATE WAS PREPARED BY ME, OR UNDER MY DIRECT SUPERVISION, THAT THE FIELD WORK WAS COMPLETED ON 08/21/2008, FOR AND ON BEHALF OF NOBLE ENERGY INC., THAT IT IS NOT A LAND SURVEY PLAT OR AN IMPROVEMENT SURVEY PLAT, AND THAT IT IS NOT TO BE RELIED UPON FOR ESTABLISHMENT OF FENCE, BUILDING, OR OTHER FUTURE IMPROVEMENT LINES.

NOTES:

- 1) BASIS OF BEARINGS FOR THIS MAP ARE BASED UPON GPS OBSERVATIONS MADE ON 08/20/2008 BETWEEN MONUMENTS LOCATED AT THE SOUTHEAST SECTION CORNER AND THE NORTHEAST SECTION CORNER OF SAID SECTION AND WITH ALL BEARINGS SHOWN HEREON RELATIVE THERETO.
- 2) ELEVATIONS ARE BASED UPON NGS OPUS SOLUTION HAND 88 DATUM.
- 3) THE NEAREST EXISTING WELL IS: BOULTER 21-1, 54' NORTHWEST.
- 4) SEPARATOR: 150' NORTHWEST, TOE OF CANAL: 178' NORTHWEST AND 150' SOUTHWEST.
- 5) THE LOCATION FALLS IN AN UNCULTIVATED FIELD.

LATITUDE & LONGITUDE (NAD 83 SURFACE HOLE):

LATITUDE: N 40.29946°

LONGITUDE: W 104.66084°

PDOP: 2.1

QUARTER-QUARTER: SE/4NE/4

NEAREST PROPERTY LINE: 580' TO THE EAST

LEGEND

- (A) FOUND SURVEY MONUMENT PER MONUMENT RECORD - EXCEPTIONS NOTED.
- (C) CALCULATED DIMENSION

David C. Holmes  
Professional Land Surveyor Registration No. 32828  
State of Colorado

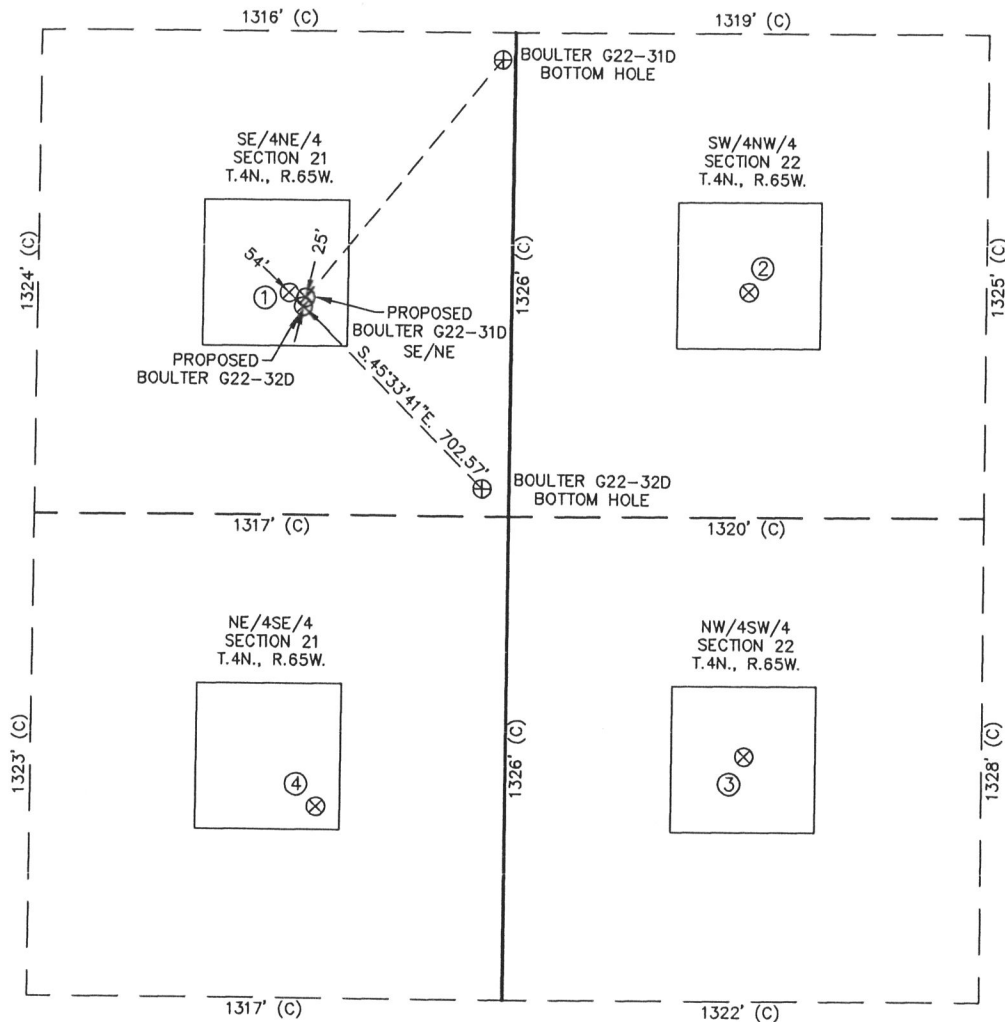
JOB #: 08086

Completed 09/30/2008



# SITE SKETCH - BOULTER G22-32D

SECTION 21  
TOWNSHIP 4 NORTH  
RANGE 65 WEST



①	②	③	④
BOULTER 21-1 SE/NE SEC. 21 2042' FNL 620' FEL EL 4810' N 40.29956 W 104.66098 PDOP 2.1	CHESNUT G22-5 SW/NW SEC. 22 2033' FNL 659' FWL EL 4780' N 40.29958 W 104.65640 PDOP 1.9	WHITNEY NO. 1-22 NW/SW SEC. 22 1997' FSL 662' FWL EL 4790' N 40.29609 W 104.65646 PDOP 2.3	HSR-WALDBAUM NO. 9-21 NE/SE SEC. 21 1850' FSL 524' FEL EL 4823' N 40.29569 W 104.66072 PDOP 2.1

## NOTES:

- THIS SKETCH DOES NOT REPRESENT A BOUNDARY SURVEY.
- THE DATUM FOR THE LATITUDES AND LONGITUDES ON THIS SKETCH IS NAD83.

