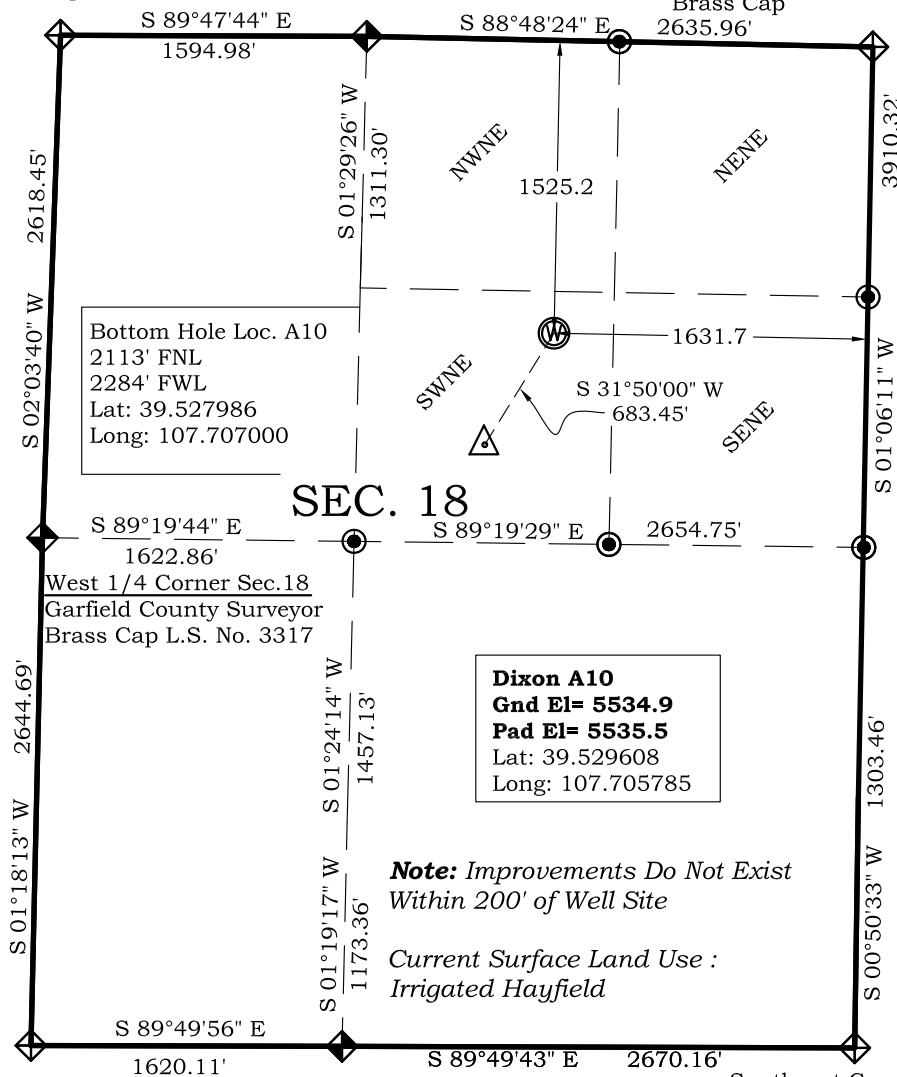
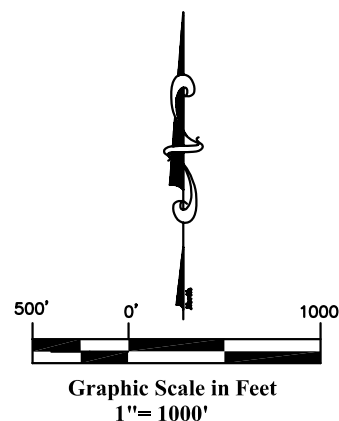


Northwest Corner Sec. 18  
Aluminum Cap L.S. No. 28862

North  $\frac{1}{4}$  Corner Sec. 18  
Brass Cap L.S. No. 15846

Northeast Corner Sec.18  
Garfield County Surveyor  
Brass Cap  
2635.96'

## Well Location Plat Dixon Well A10



South  $\frac{1}{16}$  Corner Sec.18 /17  
Brass Cap L.S. No.15846

### Legend

- Field Surveyed Section Corner
- Field Surveyed Quarter Corner
- Calculated Section Corner Location
- Field Surveyed  $\frac{1}{6}$  Corner

### DIXON A PAD

#### WELL A10

1525' FNL  
1632' FEL  
WGS 84  
LATITUDE  
39.529608  
LONGITUDE  
107.705785  
UTM 13 NORTH  
NAD 1983  
NORTHING  
14366923.4  
EASTING  
877430.8

Southwest Corner Sec. 18  
Stone in Place

South  $\frac{1}{4}$  Corner Sec.18  
Garfield County Surveyor  
Brass Cap L.S. No.14111

Southeast Corner Sec.18  
Aluminum Cap L.S. No.  
31944

Prepared For Antero Resources  
Proposed Dixon A10 Well Situate in The SW1/4NE1/4  
Section 18, Township 6 South, Range 92 West of the 6 th.  
Principal Meridian, County of Garfield, State of Colorado

### SURVEYOR'S CERTIFICATE

I, SCOTT E. AIBNER, A REGISTERED LAND SURVEYOR, LICENSED UNDER THE LAWS OF THE STATE OF COLORADO DO HEREBY CERTIFY THAT THE SURVEY SHOWN HEREON WAS PREPARED BY RIVER VALLEY SURVEY, INC., FOR ANTERO RESOURCES, BY ME OR UNDER MY DIRECT SUPERVISION AND THAT THIS PLAT IS A TRUE REPRESENTATION THEREOF.

BY:   
SCOTT E. AIBNER, COLORADO REG. NO. 31143

### Notes:

- 1.) LATITUDE AND LONGITUDE COORDINATES ARE DIFFERENTIALLY CORRECTED AND BASED ON PUBLISHED NGS CONTROL STATION "WDP-5".
- 2.) ELEVATIONS ARE BASED ON NAVD OF 1929.
- 3.) ALL BOTTOM AND TOP HOLE LOCATIONS ARE MEASURED 90 DEGREES FROM SECTION LINE.
- 4.) USGS QUADRANGLE MAP "SILT CO".
- 5.) CURRENT SURFACE LAND USE: OPEN RANGELAND
- 6.) PDOP AT THE TIME OF LOCATION OF SURFACE WELL = 1.2
- 7.) BOTTOM HOLE DISTANCE TO NEAREST LEASE LINE IS 667.8'



River Valley Survey, Inc.  
110 East 3rd. Street, Suite 207  
Rifle, Colorado 81650  
Ph: 970-379-7846

Project: Dixon A Pad

Proj. No. 06001-07A

Field Date: 07-17-07

Scale: 1"= 1000'

Date: 01-25-08

Sheet: 1 of 7

Well Location Plat  
Prepared For Antero Resources

Situate In:  
SW1/4NE1/4 Section 18, T6S., R. 92 W.  
of the 6th P.M., Garfield County,  
Colorado

