

Antero Resources

Dixon A-10
Garfield County, CO
Revision #2

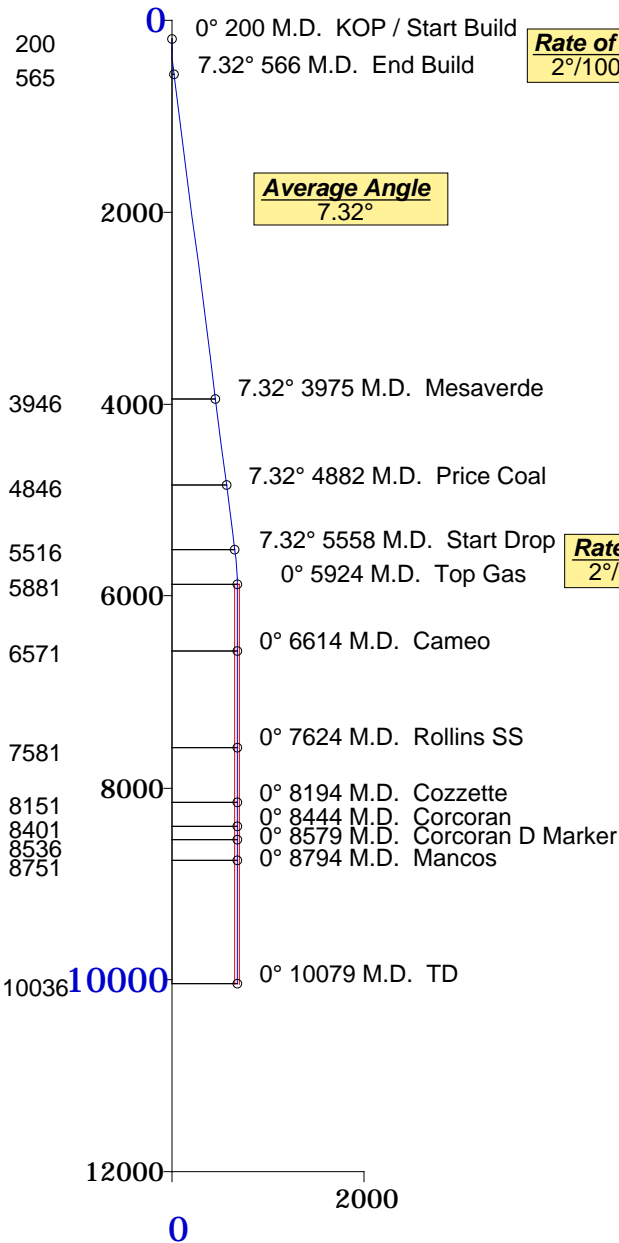
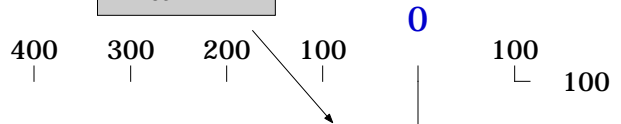


Plane of Proposal
211.51° Azimuth

Vertical Section
1" = 2000'

Surface Location
Y=1625341.24'
X=2377884.79'
NAD 83

Horizontal Plan
1" = 200'



Rate of Build
2°/100'MD

Average Angle
7.32°

Target Area
25' Radius

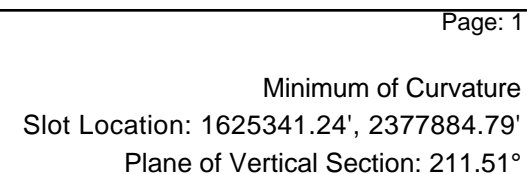
Rate of Drop
2°/100'MD

Proposed Target
683.05' Displacement from S/L
@ 211.51° Azimuth from S/L
South-582.33' West-356.99' of S/L
TVD-5881' MD-5924'
Y=1624758.9', X=2377527.8'

Formation	TVD
Mesaverde	3946
Price Coal	4846
Top Gas	5881
Cameo	6571
Rollins SS	7581
Cozzette	8151
Corcoran	8401
Corcoran D Marker	8536
Mancos	8751
TD	10036



01-28-2008



Measured Depth Feet	BORE Inc Degrees	HOLE Direction Degrees	True Vertical Depth Feet	RECTANGULAR COORDINATES		LAMBERT COORDINATES		Vertical Section Feet	CLOSURES		Dogleg Severity Deg/100'
				North(-South)	East(-West)	Y	X		Distance	Direction	
				Feet	Feet	Feet	Feet		Feet	Deg	
200.00	0.00	0.00	200.00	0.00	0.00	1625341.2	2377884.8	0.00	0.00	0.00	0.00
KOP / Start Build											
300.00	2.00	211.51	299.98	-1.49	-0.91	1625339.8	2377883.9	1.75	1.75	211.51	2.00
400.00	4.00	211.51	399.84	-5.95	-3.65	1625335.3	2377881.1	6.98	6.98	211.51	2.00
500.00	6.00	211.51	499.45	-13.38	-8.20	1625327.9	2377876.6	15.69	15.69	211.51	2.00
566.21	7.32	211.51	565.21	-19.93	-12.22	1625321.3	2377872.6	23.37	23.37	211.51	2.00
End Build											
1066.21	7.32	211.51	1061.13	-74.27	-45.53	1625267.0	2377839.3	87.11	87.11	211.51	0.00
1566.21	7.32	211.51	1557.05	-128.61	-78.84	1625212.6	2377805.9	150.85	150.85	211.51	0.00
2066.21	7.32	211.51	2052.97	-182.95	-112.16	1625158.3	2377772.6	214.59	214.59	211.51	0.00
2566.21	7.32	211.51	2548.89	-237.29	-145.47	1625104.0	2377739.3	278.33	278.33	211.51	0.00
3066.21	7.32	211.51	3044.81	-291.64	-178.78	1625049.6	2377706.0	342.07	342.07	211.51	0.00
3566.21	7.32	211.51	3540.73	-345.98	-212.10	1624995.3	2377672.7	405.81	405.81	211.51	0.00
3974.81	7.32	211.51	3946.00	-390.38	-239.32	1624950.9	2377645.5	457.90	457.90	211.51	0.00
Mesaverde											
4474.81	7.32	211.51	4441.92	-444.73	-272.64	1624896.5	2377612.2	521.64	521.64	211.51	0.00
4882.21	7.32	211.51	4846.00	-489.00	-299.78	1624852.2	2377585.0	573.58	573.58	211.51	0.00
Price Coal											
5382.21	7.32	211.51	5341.92	-543.35	-333.09	1624797.9	2377551.7	637.32	637.32	211.51	0.00
5557.56	7.32	211.51	5515.84	-562.40	-344.78	1624778.8	2377540.0	659.67	659.67	211.51	0.00
Start Drop											
5657.56	5.32	211.51	5615.22	-571.79	-350.53	1624769.5	2377534.3	670.69	670.69	211.51	2.00
5757.56	3.32	211.51	5714.93	-578.22	-354.47	1624763.0	2377530.3	678.23	678.23	211.51	2.00
5857.56	1.32	211.51	5814.85	-581.68	-356.59	1624759.6	2377528.2	682.28	682.28	211.51	2.00
5923.76	0.00	211.51	5881.05	-582.33	-356.99	1624758.9	2377527.8	683.05	683.05	211.51	2.00
Top Gas											
6613.72	0.00	211.51	6571.00	-582.33	-356.99	1624758.9	2377527.8	683.05	683.05	211.51	0.00
Cameo											

Measured Depth Feet	BORE Inc Degrees	HOLE Direction Degrees	True Vertical Depth Feet	RECTANGULAR COORDINATES		LAMBERT COORDINATES		Vertical Section Feet	CLOSURES		Dogleg Severity Deg/100'
				North(-South)	East(-West)	Y	X		Distance	Direction	
				Feet	Feet	Feet	Feet		Feet	Deg	
7623.72	0.00	211.51	7581.00	-582.33	-356.99	1624758.9	2377527.8	683.05	683.05	211.51	0.00
Rollins SS											
8193.72	0.00	211.51	8151.00	-582.33	-356.99	1624758.9	2377527.8	683.05	683.05	211.51	0.00
Cozzette											
8443.72	0.00	211.51	8401.00	-582.33	-356.99	1624758.9	2377527.8	683.05	683.05	211.51	0.00
Corcoran											
8578.72	0.00	211.51	8536.00	-582.33	-356.99	1624758.9	2377527.8	683.05	683.05	211.51	0.00
Corcoran D Marker											
8793.72	0.00	211.51	8751.00	-582.33	-356.99	1624758.9	2377527.8	683.05	683.05	211.51	0.00
Mancos											
10078.72	0.00	211.51	10036.00	-582.33	-356.99	1624758.9	2377527.8	683.05	683.05	211.51	0.00
TD											
Final Station Closure Distance: 683.05' Direction: 211.51°											