



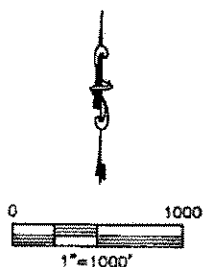
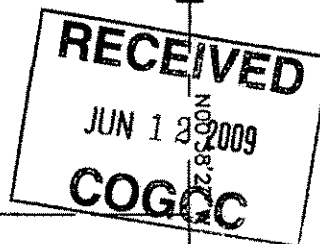
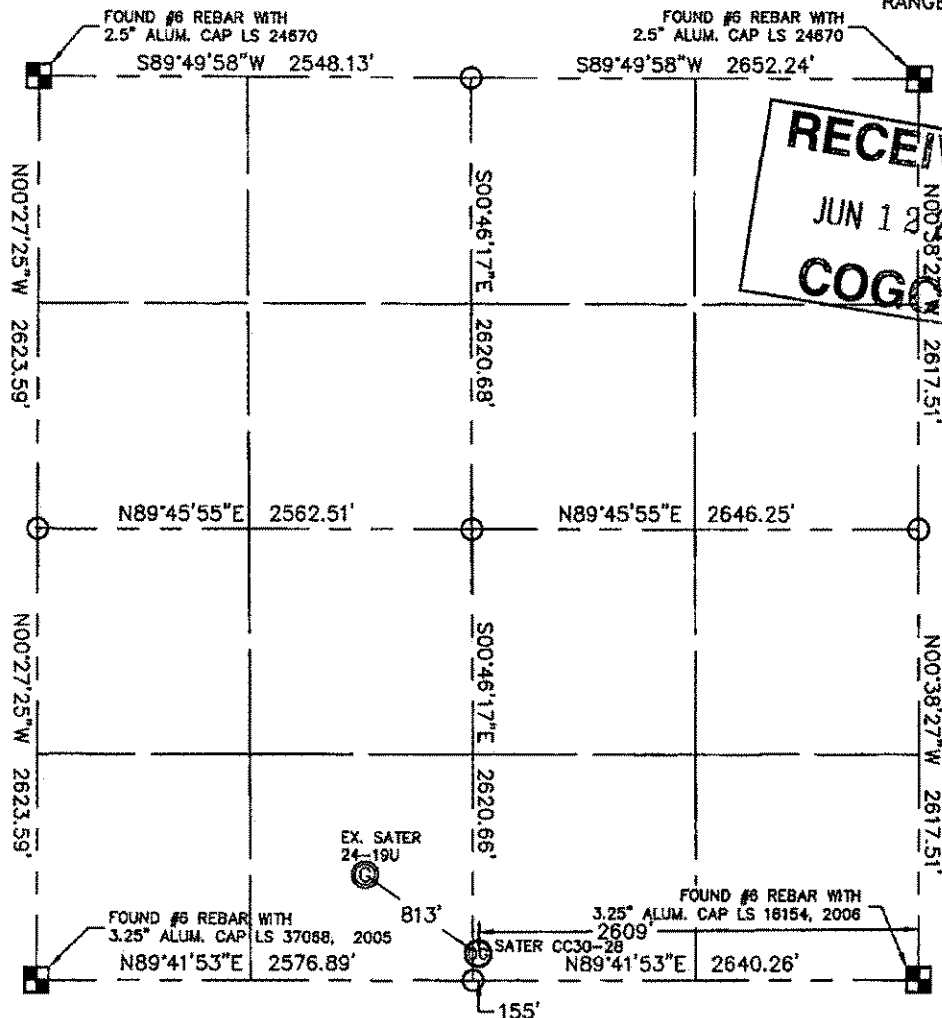
Run 2A 1904686

KING SURVEYORS, INC. 650 GARDEN DR. WINDSOR, CO 80550

## WELL LOCATION CERTIFICATE

THIS MAP DOES NOT REPRESENT A BOUNDARY SURVEY

SECTION: 19  
TOWNSHIP: 4N  
RANGE: 63W



In accordance with a request from Erik Van Dorp with Noble Energy Inc. King Surveyors Inc. has determined the surface location of the CC30-28 to be 155' from the SOUTH line and 2609' from the EAST line of Section 19, Township 4 North, Range 63 West of the Sixth Principal Meridian, County of Weld, State of Colorado.

I hereby state that this Well Location Certificate was prepared by me, or under my direct supervision, that the fieldwork was completed on March 31, 2009, for and on behalf of Noble Energy Inc. That this is not a Land Survey Plat or an Improvement Survey Plat, and that it is not to be relied upon for establishment of fence, building, or other future improvement lines.

### NOTE:

- 1) Bearings shown are Grid Bearings of the Colorado State Plane Coordinate System, North Zone, North American Datum 1983/92.
- 2) Ground elevations are based on an observed GPS elevation (NAVD 1988 DATUM).
- 3) NEAREST EXISTING WELL: SATER 24-19U 813'
- 4) IMPROVEMENTS: See VISIBLE IMPROVEMENTS exhibit for all visible improvements within 400' of well head.
- 5) SURFACE USE: OPEN PASTURE

SURFACE LOCATION  
LATITUDE: 40.29089N  
LONGITUDE: 104.48040W  
PDOP: 1.3  
ELEV: 4726  
1/4, 1/4, SW 1/4, SEC 19, T4N, R63W  
NEAREST PROPERTY LINE: 155' SOUTH

### NOTE

According to Colorado law, you must commence any legal action based upon any defect in this W.L.C. within three years after you discover such defect. In no event, may any action based upon any defect in this survey be commenced more than ten years after the date of the certificate shown hereon. (13-80-105 C.R.S.)

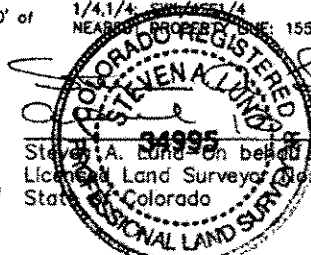
### LEGEND



= ALIQUOT MONUMENT AS DESCRIBED



= CALCULATED POSITION



Steven A. Lund on behalf of King Surveyors, Inc.  
Licensed Land Surveyor No. 34995  
State of Colorado

PROJECT#: 2009088