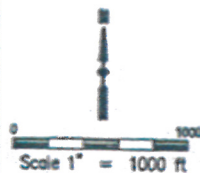
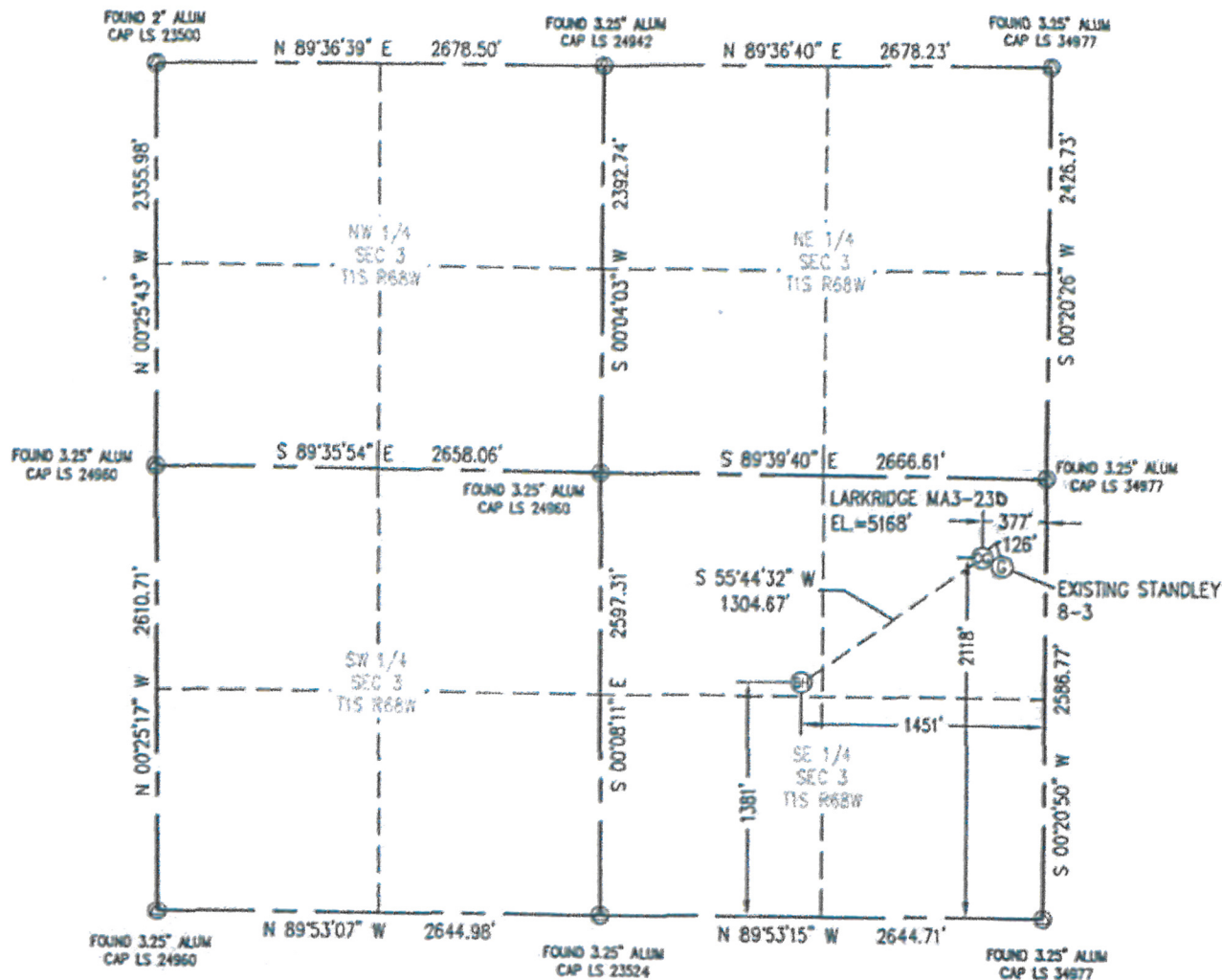


WELL LOCATION CERTIFICATE

THIS MAP DOES NOT REPRESENT A BOUNDARY SURVEY

SECTION 3
TOWNSHIP 1 SOUTH
RANGE 68 WEST

IN ACCORDANCE WITH A REQUEST FROM DREW HEATHERINGTON - NOBLE ENERGY INC, BASELINE ENGINEERING CORP. HAS DETERMINED THE LOCATION OF THE LARKRIDGE MA3-23D TO BE 377' FSL, 2118' FSL, AS MEASURED AT NINETY (90) DEGREES FROM THE SECTION LINE OF SECTION 3, TOWNSHIP 1 SOUTH, RANGE 68 WEST AND THE BOTTOM HOLE LOCATION TO BE 1451' FSL AND 1301' FSL OF SECTION 3, TOWNSHIP 1 SOUTH, RANGE 68 WEST, 8TH PRINCIPLE MERIDIAN, ADAMS COUNTY COLORADO.

I HEREBY CERTIFY THAT THIS WELL LOCATION CERTIFICATE WAS PREPARED BY ME, OR UNDER MY DIRECT SUPERVISION, THAT THE FIELD WORK WAS COMPLETED ON 11/19/2008, THAT IT IS NOT A LAND SURVEY PLAT OR AN IMPROVEMENT SURVEY PLAT, AND THAT IT IS NOT TO BE RELIED UPON FOR ESTABLISHMENT OF FENCE, BUILDING, OR OTHER FUTURE IMPROVEMENT LINES.

NOTES:

- 1) LAT/LONG SHOWN ARE BASED ON A GPS OBSERVATION (NAD83).
- 2) GROUND ELEVATIONS ARE BASED ON A GPS OBSERVATION (NAVD 88 DATUM).
- 3) BEARINGS SHOWN ARE GRID BEARINGS OF THE CO STATE PLANE CS (NORTH ZONE), NAD 83.
- 4) ALL DISTANCES SHOWN ARE FIELD MEASURED UNLESS OTHERWISE NOTED.
- 5) THE NEAREST EXISTING WELL IS: STANDLEY 8-3 126' EAST-SOUTHEAST.
- 6) IMPROVEMENTS: SEE VISIBLE IMPROVEMENTS EXHIBIT FOR ALL VISIBLE IMPROVEMENTS WITHIN 400' OF WELL HEAD.
- 7) SURFACE USE: VACANT COMMERCIAL LOT.

LATITUDE & LONGITUDE (NAD 83 SURFACE HOLE):

LATITUDE: N 38.992378
 LONGITUDE: W 104.979804
 POOP: 2.5
 1/4, 1/4 NE/SE
 NEAREST PROPERTY LINE: 2' E

BOTTOM HOLE:
 LATITUDE: N 38.980378
 LONGITUDE: W 104.983468

LEGEND

- ⊙ - FOUND/SET SURVEY MONUMENT PER MONUMENT RECORD EXCEPTIONS NOTED.
- - CALCULATED SURVEY MONUMENT POSITION
- (C) - CALCULATED DIMENSION

NOTICE: According to Colorado law you MUST commence any legal action based upon any defect in this WLC, within three years after you first discover such defect. In no event may any action based upon any defect in this WLC be commenced more than ten years from this date of the certification above hereon.

Completed
5/5/2009

John C. Barkman
 Professional Land Surveyor Registration No. 28258
 State of Colorado
 FOR AND ON BEHALF OF BASELINE ENGINEERING CORP.

JOB # NORTIS68W03-05