



August 31, 2009

Department of Natural Resources  
Oil and Gas Conservation Commission  
The Chancery Building  
1120 Lincoln St., Suite 801  
Denver, CO 80203

Re: **20 Day Certification Letter - 318A-e**  
BELLA FEDERAL 24-7  
Township 3 North, Range 66 West, Section 7: SE/4SE/4  
Unit Spacing:: 03N-66W-07 N/2SE/4 S/2NE/4  
Weld County, Colorado

Ladies/Gentlemen:

Kerr-McGee Oil and Gas Onshore LP ("KMG") hereby certifies to the Director that a twenty (20) day notice has been given by certified mail to all owners in the proposed wellbore spacing unit. We have not received any objections to such well location, proposed spacing unit, or additional producing formation. KMG hereby requests the Director to approve the boundary well.

If you have any questions or issues regarding this permit, please contact Cheryl Light at (720) 929-6461.

Very truly yours,

**Kerr-McGee Oil and Gas Onshore LP**

A handwritten signature in blue ink, appearing to read 'Cheryl Light'.

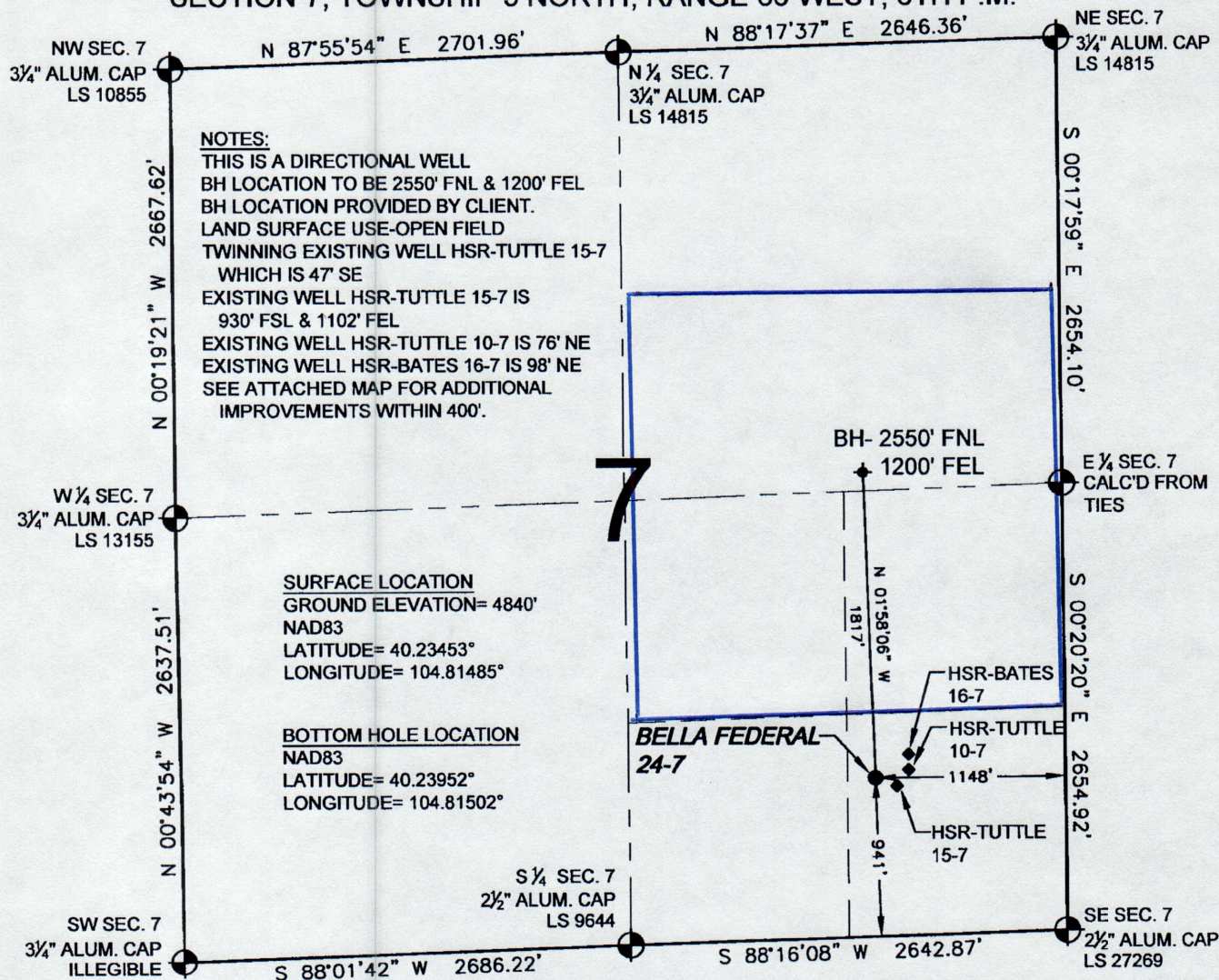
**Cheryl Light**  
**Senior Regulatory Analyst**

:cl  
Enclosure



# WELL LOCATION CERTIFICATE: BELLA FEDERAL 24-7

SECTION 7, TOWNSHIP 3 NORTH, RANGE 66 WEST, 6TH P.M.

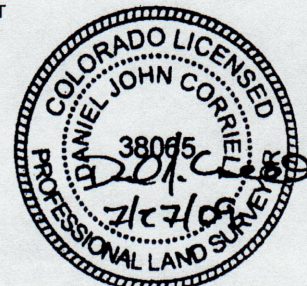


## NOTES:

1. THIS SURVEY WAS DONE BY GPS METHODS AND CONFORMS TO THE MINIMUM STANDARDS SET BY THE C.O.G.C.C., RULE NO. 215 (PDOP VALUE IS LESS THAN 6.0, LATITUDE AND LONGITUDE ARE ACCURATE TO 5 DECIMAL PLACES, AND GPS OBSERVATIONS ARE DIFFERENTIAL AND DONE BY QUALIFIED PERSONNEL.)
2. ELEVATIONS SHOWN AT THE WELL HEAD, AS WELL AS HORIZONTAL CONTROL, ARE BASED ON GPS-RTK VALUES DERIVED FROM DOING 2-HOUR STATIC GPS SESSIONS AND REDUCTIONS USING O.P.U.S. SOLUTIONS.  
VERTICAL = NAVD88; HORIZONTAL = NAD83/92
3. THE BEARINGS SHOWN HEREON ARE BASED ON GPS OBSERVATIONS BETWEEN THE MONUMENTS SHOWN HEREON AS FOUND ON THE FIELD DATE BELOW.
4. DISTANCES SHOWN ARE AT GROUND LEVEL, AS MEASURED IN THE FIELD, WITH TIES TO WELLS MEASURED AT A PERPENDICULAR TO SECTION LINES.

I, DANIEL J. CORRIELL, A LICENSED PROFESSIONAL LAND SURVEYOR IN THE STATE OF COLORADO DO HEREBY CERTIFY TO **KERR-MCGEE OIL & GAS ONSHORE LP**, THAT THE SURVEY AND WELL LOCATION CERTIFICATE SHOWN HEREON WERE DONE BY ME OR UNDER MY DIRECT SUPERVISION AND THAT THE DRAWING SHOWN HEREON ACCURATELY DEPICTS THE PROPOSED LOCATION OF THE WELL **BELLA FEDERAL 24-7**. THIS CERTIFICATE DOES NOT REPRESENT A LAND SURVEY PLAT OR IMPROVEMENT SURVEY PLAT AS DEFINED BY C.R.S. 38-51-102 AND CANNOT BE RELIED UPON TO DETERMINE OWNERSHIP.

DANIEL J. CORRIELL, PLS 38065  
COLORADO LICENSED PROFESSIONAL LAND SURVEYOR  
FOR AND ON BEHALF OF P.F.S., LLC

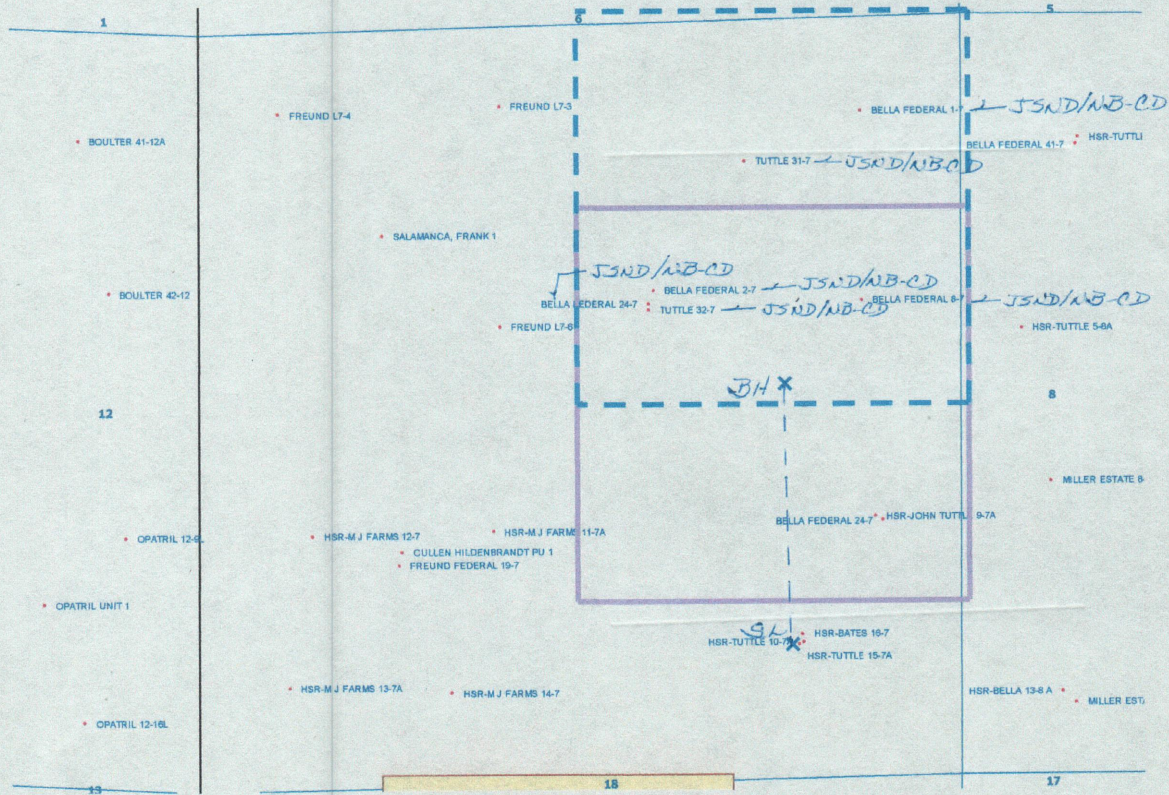


PREPARED BY: <b>PFS</b> Professional Field Services, LLC 1801 W. 53rd Ave. Denver, CO 80224	FIELD DATE: 07-22-09 DRAWING DATE: 07-24-09 BY: SMF	WELL NAME: BELLA FEDERAL 24-7 SURFACE LOCATION: WELD COUNTY, COLORADO SE 1/4 SE 1/4, SEC. 7, T3N, R66W
---	--	--

NOTICE: ACCORDING TO COLORADO LAW YOU MUST COMMENCE ANY LEGAL ACTION BASED UPON ANY DEFECT IN THIS SURVEY WITHIN THREE YEARS AFTER YOU FIRST DISCOVER SUCH DEFECT. IN NO EVENT MAY ANY ACTION BASED UPON ANY DEFECT IN THIS SURVEY BE COMMENCED MORE THAN TEN YEARS FROM THIS SAID DATE OF THIS CERTIFICATION SHOWN HEREON.



# **BELLA FEDERAL 24-7** **SESE Sec. 7 T3N-R66W**



## **LEGEND**



Proposed 160 acre Spacing Unit (Solid line).



Bottom Hole Located NE/4NE/4, Sec. 7-T3N-R66W (Dashed line).

**This 1/4 Section has less than 8 bottom hole wells producing from the Codell, Niobrara & J Sand Formations.**