

# ANADARKO PETROLEUM

Location: COLORADO Slot: SLOT#02 BELLA FEDERAL 24-7 (941°FSL & 1148°FEL)  
Field: WELD COUNTY (ANADARKO) Well: BELLA FEDERAL 24-7  
Facility: SEC.07-T3N-R66W Wellbore: BELLA FEDERAL 24-7 PWB



## Well Profile Data

Design Comment	MD (ft)	Inc (°)	Az (°)	TVD (ft)	Local N (ft)	Local E (ft)	DLS (°/100ft)	VS (ft)
Tie On	15.00	0.000	358.504	15.00	0.00	0.00	0.00	0.00
End of Tangent	1000.00	0.000	358.504	1000.00	0.00	0.00	0.00	0.00
End of Build (S)	2375.00	27.500	358.504	2322.81	323.58	-8.45	2.00	323.69
End of Tangent (S)	4911.24	27.500	358.504	4572.48	1494.29	-39.01	0.00	1494.80
Drop (S)	6286.24	0.000	358.504	5895.30	1817.87	-47.46	2.00	1818.49
End of Tangent	8305.94	0.000	358.504	7915.00	1817.87	-47.46	0.00	1818.49

## Location Information

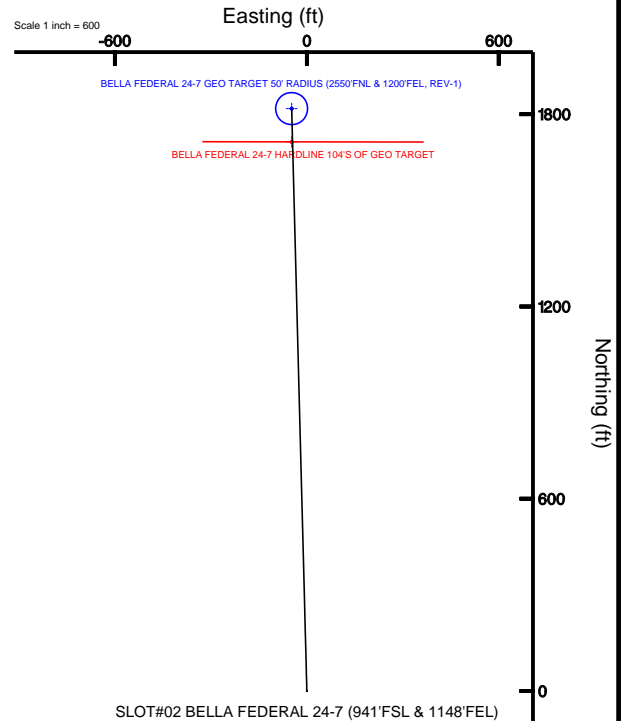
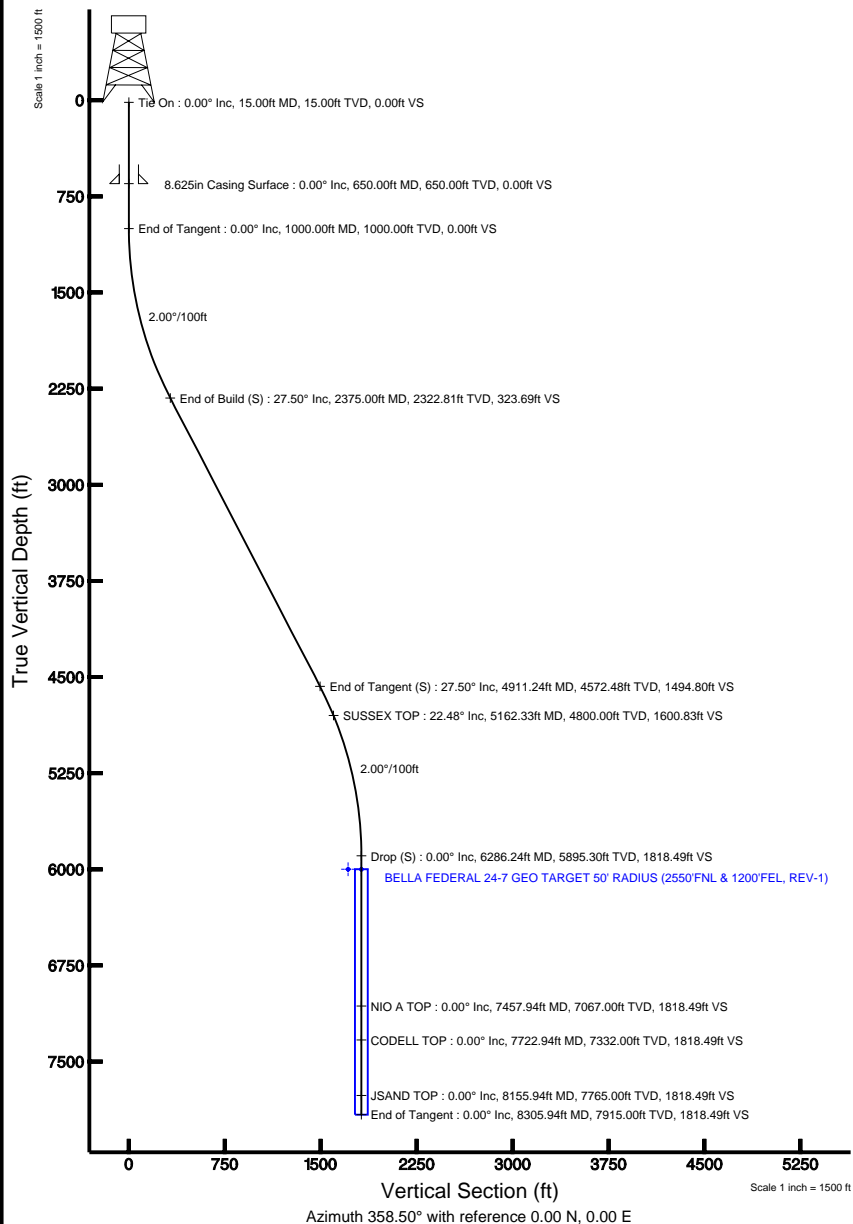
Facility Name				Grid East (USft)	Grid North (USft)	Latitude	Longitude
SEC.07-T3N-R66W				3190294.846	1331460.620	40°14'28.500"N	104°49'05.988"W
Slot	Local N (ft)	Local E (ft)	Grid East (USft)	Grid North (USft)	Latitude	Longitude	
SLOT#02 BELLA FEDERAL 24-7 (941FSL & 1148FEL)	-2448.09	971.63	3191285.217	1329020.182	40°14'04.308"N	104°48'53.460"W	
Rig on SLOT#02 BELLA FEDERAL 24-7 (941FSL & 1148FEL) (RT) to Mud line (Facility: SEC.07-T3N-R66W)						4855ft	
Mean Sea Level to Mud line (Facility: SEC.07-T3N-R66W)						0ft	
Rig on SLOT#02 BELLA FEDERAL 24-7 (941FSL & 1148FEL) (RT) to Mean Sea Level						4855ft	

## Targets

Name	MD (ft)	TVD (ft)	Local N (ft)	Local E (ft)	Grid East (USft)	Grid North (USft)	Latitude	Longitude
BELLA FEDERAL 24-7 GEO TARGET 50' RADIUS (2550FNL & 1200FEL, REV-1)	6000.00	1817.87	-47.46	3191223.71	1330837.55	40°14'22.272"N	104°48'54.072"W	
BELLA FEDERAL 24-7 HARDLINE 104'S OF GEO TARGET	6000.00	1713.87	-47.46	3191224.52	1330733.56	40°14'21.244"N	104°48'54.072"W	

Plot reference wellpath is BELLA FEDERAL 24-7 (REV-A.0) PWB

True vertical depths are referenced to Rig on SLOT#02 BELLA FEDERAL 24-7 (941°FSL & 1148°FEL) (RT)	Grid System: NAD83 / Lambert Colorado State Planes, Northern Zone (501), US feet
Measured depths are referenced to Rig on SLOT#02 BELLA FEDERAL 24-7 (941°FSL & 1148°FEL) (RT)	North Reference: True north
Rig on SLOT#02 BELLA FEDERAL 24-7 (941°FSL & 1148°FEL) (RT) to Mean Sea Level: 4855 feet	Scale: True distance
Mean Sea Level to Mud line (Facility: SEC.07-T3N-R66W): 0 feet	Depths are in feet
Coordinates are in feet referenced to Slot	Created by: cookdarm on 8/14/2009



BGGM (1945.0 to 2010.0) Dip: 67.00° Field: 53267.8 nT  
Magnetic North is 9.09 degrees East of True North (at 8/14/2009)

To correct azimuth from Magnetic to True add 9.09 degrees  
For example: if the Magnetic North Azimuth = 90 degs, then the Grid North Azimuth = 90 + 9.09 = 99.09

# Planned Wellpath Report

BELLA FEDERAL 24-7 (REV-A.0) PWP

Page 1 of 5

INTEQ

## REFERENCE WELLPATH IDENTIFICATION

Operator	ANADARKO PETROLEUM	Slot	SLOT#02 BELLA FEDERAL 24-7 (941'FSL & 1148'FEL)
Area	COLORADO	Well	BELLA FEDERAL 24-7
Field	WELD COUNTY (ANADARKO)	Wellbore	BELLA FEDERAL 24-7 PWB
Facility	SEC.07-T3N-R66W		

## REPORT SETUP INFORMATION

Projection System	NAD83 / Lambert Colorado State Planes, Northern Zone (501), US feet	Software System	WellArchitect® 2.0
North Reference	True	User	Cookdanm
Scale	0.999957	Report Generated	8/14/2009 at 4:46:51 PM
Convergence at slot	0.44° East	Database/Source file	WellArchitect_Denver/BELLA_FEDERAL_24-7_PWB.xml

## WELLPATH LOCATION

	Local coordinates		Grid coordinates		Geographic coordinates	
	North[ft]	East[ft]	Easting[USft]	Northing[USft]	Latitude	Longitude
Slot Location	-2448.09	971.63	3191285.22	1329020.18	40°14'04.308"N	104°48'53.460"W
Facility Reference Pt			3190294.85	1331460.62	40°14'28.500"N	104°49'05.988"W
Field Reference Pt			3197771.84	1268891.29	40°04'09.600"N	104°47'36.000"W

## WELLPATH DATUM

Calculation method	Minimum curvature	Rig on SLOT#02 BELLA FEDERAL 24-7 (941'FSL & 1148'FEL) (RT) to Facility Vertical Datum
Horizontal Reference Pt	Slot	Rig on SLOT#02 BELLA FEDERAL 24-7 (941'FSL & 1148'FEL) (RT) to Mean Sea Level
Vertical Reference Pt	Rig on SLOT#02 BELLA FEDERAL 24-7 (941'FSL & 1148'FEL) (RT)	Facility Vertical Datum to Mud Line (Fac)
MD Reference Pt	Rig on SLOT#02 BELLA FEDERAL 24-7 (941'FSL & 1148'FEL) (RT)	Section Origin
Field Vertical Reference	Mean Sea Level	Section Azimuth

# Planned Wellpath Report

BELLA FEDERAL 24-7 (REV-A.0) PWP

Page 2 of 5

## REFERENCE WELLPATH IDENTIFICATION

Operator	ANADARKO PETROLEUM	Slot	SLOT#02 BELLA FEDERAL 24-7 (941'FSL & 1148'FEL)
Area	COLORADO	Well	BELLA FEDERAL 24-7
Field	WELD COUNTY (ANADARKO)	Wellbore	BELLA FEDERAL 24-7 PWB
Facility	SEC.07-T3N-R66W		

## WELLPATH DATA (93 stations) † = interpolated/extrapolated station

MD [ft]	Inclination [°]	Azimuth [°]	TVD [ft]	Vert Sect [ft]	North [ft]	East [ft]	DLS [°/100ft]	Comments
0.00†	0.000	358.504	0.00	0.00	0.00	0.00	0.00	
15.00	0.000	358.504	15.00	0.00	0.00	0.00	0.00	Tie On
115.00†	0.000	358.504	115.00	0.00	0.00	0.00	0.00	
215.00†	0.000	358.504	215.00	0.00	0.00	0.00	0.00	
315.00†	0.000	358.504	315.00	0.00	0.00	0.00	0.00	
415.00†	0.000	358.504	415.00	0.00	0.00	0.00	0.00	
515.00†	0.000	358.504	515.00	0.00	0.00	0.00	0.00	
615.00†	0.000	358.504	615.00	0.00	0.00	0.00	0.00	
715.00†	0.000	358.504	715.00	0.00	0.00	0.00	0.00	
815.00†	0.000	358.504	815.00	0.00	0.00	0.00	0.00	
915.00†	0.000	358.504	915.00	0.00	0.00	0.00	0.00	
1000.00	0.000	358.504	1000.00	0.00	0.00	0.00	0.00	End of Tangent
1015.00†	0.300	358.504	1015.00	0.04	0.04	0.00	2.00	
1115.00†	2.300	358.504	1114.97	2.31	2.31	-0.06	2.00	
1215.00†	4.300	358.504	1214.80	8.06	8.06	-0.21	2.00	
1315.00†	6.300	358.504	1314.37	17.30	17.29	-0.45	2.00	
1415.00†	8.300	358.504	1413.55	30.01	30.00	-0.78	2.00	
1515.00†	10.300	358.504	1512.23	46.17	46.15	-1.20	2.00	
1615.00†	12.300	358.504	1610.29	65.76	65.74	-1.72	2.00	
1715.00†	14.300	358.504	1707.60	88.76	88.73	-2.32	2.00	
1815.00†	16.300	358.504	1804.05	115.15	115.11	-3.01	2.00	
1915.00†	18.300	358.504	1899.52	144.89	144.84	-3.78	2.00	
2015.00†	20.300	358.504	1993.90	177.94	177.87	-4.64	2.00	
2115.00†	22.300	358.504	2087.06	214.26	214.19	-5.59	2.00	
2215.00†	24.300	358.504	2178.90	253.81	253.72	-6.62	2.00	
2315.00†	26.300	358.504	2269.31	296.54	296.44	-7.74	2.00	
2375.00	27.500	358.504	2322.81	323.69	323.58	-8.45	2.00	End of Build (S)
2415.00†	27.500	358.504	2358.29	342.16	342.04	-8.93	0.00	
2515.00†	27.500	358.504	2446.99	388.33	388.20	-10.14	0.00	
2615.00†	27.500	358.504	2535.69	434.51	434.36	-11.34	0.00	
2715.00†	27.500	358.504	2624.40	480.68	480.52	-12.55	0.00	
2815.00†	27.500	358.504	2713.10	526.86	526.68	-13.75	0.00	
2915.00†	27.500	358.504	2801.80	573.03	572.84	-14.96	0.00	
3015.00†	27.500	358.504	2890.50	619.21	619.00	-16.16	0.00	
3115.00†	27.500	358.504	2979.20	665.38	665.16	-17.37	0.00	
3215.00†	27.500	358.504	3067.90	711.56	711.32	-18.57	0.00	
3315.00†	27.500	358.504	3156.60	757.73	757.48	-19.78	0.00	
3415.00†	27.500	358.504	3245.30	803.91	803.63	-20.98	0.00	
3515.00†	27.500	358.504	3334.00	850.08	849.79	-22.19	0.00	
3615.00†	27.500	358.504	3422.71	896.26	895.95	-23.39	0.00	
3715.00†	27.500	358.504	3511.41	942.43	942.11	-24.60	0.00	
3815.00†	27.500	358.504	3600.11	988.61	988.27	-25.80	0.00	
3915.00†	27.500	358.504	3688.81	1034.78	1034.43	-27.01	0.00	
4015.00†	27.500	358.504	3777.51	1080.96	1080.59	-28.21	0.00	
4115.00†	27.500	358.504	3866.21	1127.13	1126.75	-29.42	0.00	

# Planned Wellpath Report

BELLA FEDERAL 24-7 (REV-A.0) PWP

Page 3 of 5

INTEQ

## REFERENCE WELLPATH IDENTIFICATION

Operator	ANADARKO PETROLEUM	Slot	SLOT#02 BELLA FEDERAL 24-7 (941'FSL & 1148'FEL)
Area	COLORADO	Well	BELLA FEDERAL 24-7
Field	WELD COUNTY (ANADARKO)	Wellbore	BELLA FEDERAL 24-7 PWB
Facility	SEC.07-T3N-R66W		

## WELLPATH DATA (93 stations) † = interpolated/extrapolated station

MD [ft]	Inclination [°]	Azimuth [°]	TVD [ft]	Vert Sect [ft]	North [ft]	East [ft]	DLS [°/100ft]	Comments
4215.00†	27.500	358.504	3954.91	1173.31	1172.91	-30.62	0.00	
4315.00†	27.500	358.504	4043.61	1219.48	1219.07	-31.83	0.00	
4415.00†	27.500	358.504	4132.31	1265.66	1265.23	-33.03	0.00	
4515.00†	27.500	358.504	4221.02	1311.83	1311.39	-34.24	0.00	
4615.00†	27.500	358.504	4309.72	1358.01	1357.54	-35.44	0.00	
4715.00†	27.500	358.504	4398.42	1404.18	1403.70	-36.65	0.00	
4815.00†	27.500	358.504	4487.12	1450.36	1449.86	-37.85	0.00	
4911.24	27.500	358.504	4572.48	1494.80	1494.29	-39.01	0.00	End of Tangent (S)
4915.00†	27.425	358.504	4575.82	1496.53	1496.02	-39.06	2.00	
5015.00†	25.425	358.504	4665.37	1541.03	1540.50	-40.22	2.00	
5115.00†	23.425	358.504	4756.41	1582.38	1581.84	-41.30	2.00	
5162.33†	22.478	358.504	4800.00	1600.83	1600.29	-41.78	2.00	SUSSEX TOP
5215.00†	21.425	358.504	4848.85	1620.52	1619.97	-42.29	2.00	
5315.00†	19.425	358.504	4942.56	1655.42	1654.85	-43.21	2.00	
5415.00†	17.425	358.504	5037.43	1687.02	1686.45	-44.03	2.00	
5515.00†	15.425	358.504	5133.34	1715.30	1714.71	-44.77	2.00	
5615.00†	13.425	358.504	5230.18	1740.21	1739.61	-45.42	2.00	
5715.00†	11.425	358.504	5327.83	1761.72	1761.12	-45.98	2.00	
5815.00†	9.425	358.504	5426.18	1779.81	1779.21	-46.45	2.00	
5915.00†	7.425	358.504	5525.10	1794.47	1793.85	-46.83	2.00	
6015.00†	5.425	358.504	5624.46	1805.65	1805.04	-47.13	2.00	
6115.00†	3.425	358.504	5724.16	1813.37	1812.75	-47.33	2.00	
6215.00†	1.425	358.504	5824.06	1817.60	1816.98	-47.44	2.00	
6286.24	0.000	358.504	5895.30 <sup>1</sup>	1818.49	1817.87	-47.46	2.00	Drop (S)
6315.00†	0.000	358.504	5924.06	1818.49	1817.87	-47.46	0.00	
6415.00†	0.000	358.504	6024.06	1818.49	1817.87	-47.46	0.00	
6515.00†	0.000	358.504	6124.06	1818.49	1817.87	-47.46	0.00	
6615.00†	0.000	358.504	6224.06	1818.49	1817.87	-47.46	0.00	
6715.00†	0.000	358.504	6324.06	1818.49	1817.87	-47.46	0.00	
6815.00†	0.000	358.504	6424.06	1818.49	1817.87	-47.46	0.00	
6915.00†	0.000	358.504	6524.06	1818.49	1817.87	-47.46	0.00	
7015.00†	0.000	358.504	6624.06	1818.49	1817.87	-47.46	0.00	
7115.00†	0.000	358.504	6724.06	1818.49	1817.87	-47.46	0.00	
7215.00†	0.000	358.504	6824.06	1818.49	1817.87	-47.46	0.00	
7315.00†	0.000	358.504	6924.06	1818.49	1817.87	-47.46	0.00	
7415.00†	0.000	358.504	7024.06	1818.49	1817.87	-47.46	0.00	
7457.94†	0.000	358.504	7067.00	1818.49	1817.87	-47.46	0.00	NIO A TOP
7515.00†	0.000	358.504	7124.06	1818.49	1817.87	-47.46	0.00	
7615.00†	0.000	358.504	7224.06	1818.49	1817.87	-47.46	0.00	
7715.00†	0.000	358.504	7324.06	1818.49	1817.87	-47.46	0.00	
7722.94†	0.000	358.504	7332.00	1818.49	1817.87	-47.46	0.00	CODELL TOP
7815.00†	0.000	358.504	7424.06	1818.49	1817.87	-47.46	0.00	
7915.00†	0.000	358.504	7524.06	1818.49	1817.87	-47.46	0.00	
8015.00†	0.000	358.504	7624.06	1818.49	1817.87	-47.46	0.00	
8115.00†	0.000	358.504	7724.06	1818.49	1817.87	-47.46	0.00	

# Planned Wellpath Report

BELLA FEDERAL 24-7 (REV-A.0) PWP

Page 4 of 5

INTEQ

## REFERENCE WELLPATH IDENTIFICATION

Operator	ANADARKO PETROLEUM	Slot	SLOT#02 BELLA FEDERAL 24-7 (941'FSL & 1148'FEL)
Area	COLORADO	Well	BELLA FEDERAL 24-7
Field	WELD COUNTY (ANADARKO)	Wellbore	BELLA FEDERAL 24-7 PWB
Facility	SEC.07-T3N-R66W		

## WELLPATH DATA (93 stations) † = interpolated/extrapolated station

MD [ft]	Inclination [°]	Azimuth [°]	TVD [ft]	Vert Sect [ft]	North [ft]	East [ft]	DLS [°/100ft]	Comments
8155.94†	0.000	358.504	7765.00	1818.49	1817.87	-47.46	0.00	JSAND TOP
8215.00†	0.000	358.504	7824.06	1818.49	1817.87	-47.46	0.00	
8305.94	0.000	358.504	7915.00	1818.49	1817.87	-47.46	0.00	End of Tangent

## HOLE & CASING SECTIONS

Ref Wellbore: BELLA FEDERAL 24-7 PWB

Ref Wellpath: BELLA FEDERAL 24-7 (REV-A.0) PWP

String/Diameter	Start MD [ft]	End MD [ft]	Interval [ft]	Start TVD [ft]	End TVD [ft]	Start N/S [ft]	Start E/W [ft]	End N/S [ft]	End E/W [ft]
12.25in Open Hole	15.00	650.00	635.00	15.00	650.00	0.00	0.00	0.00	0.00
8.625in Casing Surface	15.00	650.00	635.00	15.00	650.00	0.00	0.00	0.00	0.00
7.875in Open Hole	650.00	8305.94	7655.94	650.00	7915.00	0.00	0.00	1817.87	-47.46

## TARGETS

Name	MD [ft]	TVD [ft]	North [ft]	East [ft]	Grid East [srv ft]	Grid North [srv ft]	Latitude	Longitude	Shape
1) BELLA FEDERAL 24-7 GEO TARGET 50' RADIUS (2550'FNL & 1200'FEL, REV-1)		6000.00	1817.87	-47.46	3191223.71	1330837.55	40°14'22.272"N	104°48'54.072"W	circle
BELLA FEDERAL 24-7 HARDLINE 104'S OF GEO TARGET		6000.00	1713.87	-47.46	3191224.52	1330733.56	40°14'21.244"N	104°48'54.072"W	point

## SURVEY PROGRAM

Ref Wellbore: BELLA FEDERAL 24-7 PWB

Ref Wellpath: BELLA FEDERAL 24-7 (REV-A.0) PWP

Start MD [ft]	End MD [ft]	Positional Uncertainty Model	Log Name/Comment	Wellbore
15.00	8305.94	MTC (Collar, post-2000) (Standard)		BELLA FEDERAL 24-7 PWB

# Planned Wellpath Report

BELLA FEDERAL 24-7 (REV-A.0) PWP

Page 5 of 5

**INTEQ**

## REFERENCE WELLPATH IDENTIFICATION

Operator	ANADARKO PETROLEUM	Slot	SLOT#02 BELLA FEDERAL 24-7 (941'FSL & 1148'FEL)
Area	COLORADO	Well	BELLA FEDERAL 24-7
Field	WELD COUNTY (ANADARKO)	Wellbore	BELLA FEDERAL 24-7 PWB
Facility	SEC.07-T3N-R66W		

## WELLPATH COMMENTS

MD [ft]	Inclination [°]	Azimuth [°]	TVD [ft]	Comment
5162.33	22.478	358.504	4800.00	SUSSEX TOP
7457.94	0.000	358.504	7067.00	NIO A TOP
7722.94	0.000	358.504	7332.00	CODELL TOP
8155.94	0.000	358.504	7765.00	JSAND TOP