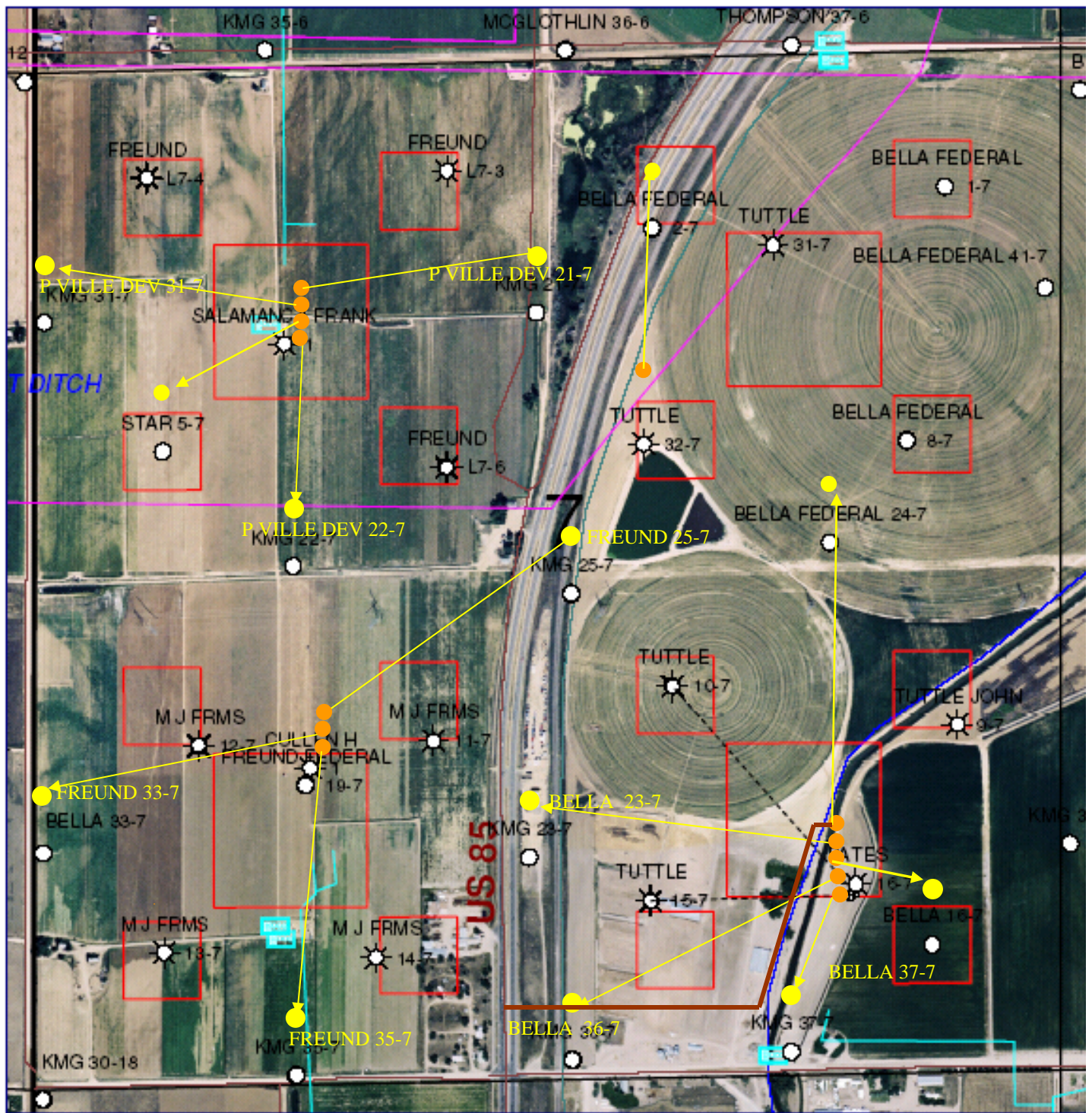


ACCESS ROAD (2007 Aerial)



- Access Road
- KMG Gathering Pipeline
- Duke Pipeline
- RCSI
- Proposed Flowline
- Legal Drilling Window
- Battery Location

KerrMcGee Oil & Gas Onshore LP		
AERIAL PHOTO Sec. 7-T38N-R66W Weld County, Colorado		
Author: Tadley R. Kasper, Inc.	Created: 03/14/2006	Revised: 10/14/2006
Project: 2006-012 Sec 7 in Sec 7	Scale: 1" = 800'	File: Aerial/Sec 7/Sec 7.dwg

