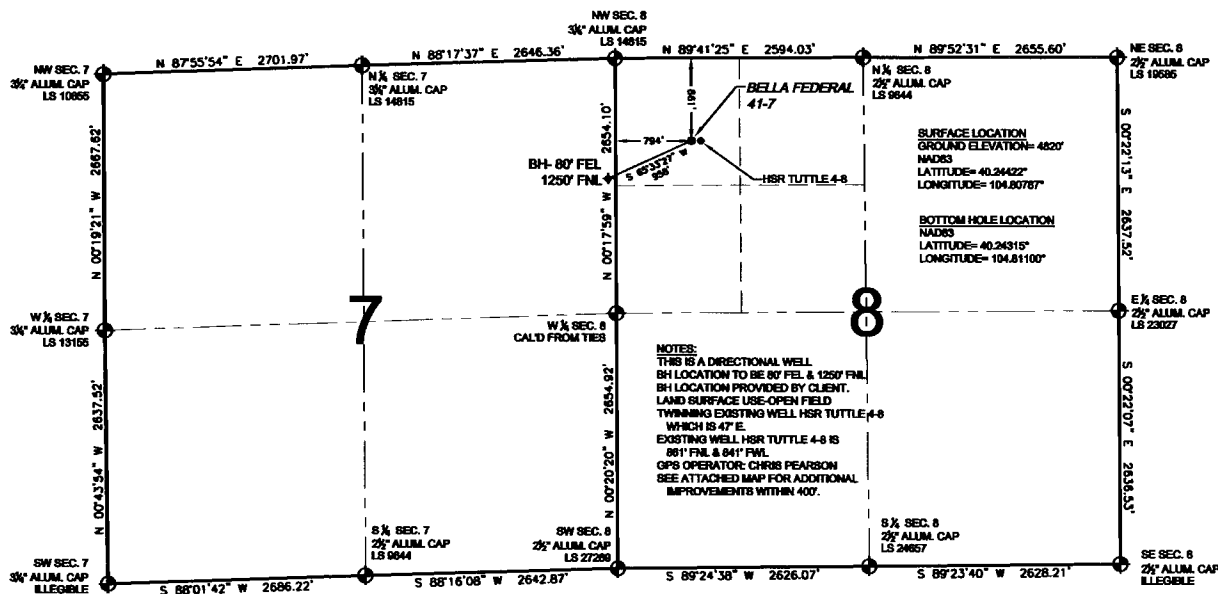


WELL LOCATION CERTIFICATE: BELLA FEDERAL 41-7

SECTION 8, TOWNSHIP 3 NORTH, RANGE 66 WEST, 6TH P.M.

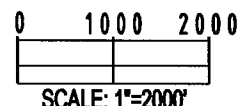


WELL BELLA FEDERAL 41-7 TO BE LOCATED 861' FNL AND 794' FWL, SECTION 8, T3N, R66W OF THE 6th P.M.

LEGEND

- = EXISTING MONUMENT ♦ = BOTTOM HOLE
● = PROPOSED WELL ♦ = EXISTING WELL

BH = BOTTOM HOLE

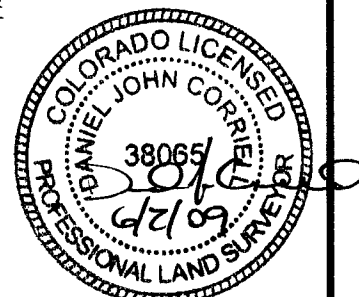


NOTES:

- THIS SURVEY WAS DONE BY GPS METHODS AND CONFORMS TO THE MINIMUM STANDARDS SET BY THE C.O.G.C.C., RULE NO. 215 (PDOP VALUE IS LESS THAN 6.0, LATITUDE AND LONGITUDE ARE ACCURATE TO 5 DECIMAL PLACES, AND GPS OBSERVATIONS ARE DIFFERENTIAL AND DONE BY QUALIFIED PERSONNEL.)
- ELEVATIONS SHOWN AT THE WELL HEAD, AS WELL AS HORIZONTAL CONTROL, ARE BASED ON GPS-RTK VALUES DERIVED FROM DOING 2-HOUR STATIC GPS SESSIONS AND REDUCTIONS USING O.P.U.S. SOLUTIONS.
VERTICAL = NAVD88; HORIZONTAL = NAD83/92.3.
- THE BEARINGS SHOWN HEREON ARE BASED ON GPS OBSERVATIONS BETWEEN THE MONUMENTS SHOWN HEREON AS FOUND ON THE FIELD DATE BELOW.
- DISTANCES SHOWN ARE AT GROUND LEVEL, AS MEASURED IN THE FIELD, WITH TIES TO WELLS MEASURED AT PERPENDICULAR TO SECTION LINES.

I, DANIEL J. CORRIELL, A LICENSED PROFESSIONAL LAND SURVEYOR IN THE STATE OF COLORADO DO HEREBY CERTIFY TO **KERR-MCGEE OIL & GAS ONSHORE LP**, THAT THE SURVEY AND WELL LOCATION CERTIFICATE SHOWN HEREON WERE DONE BY ME OR UNDER MY DIRECT SUPERVISION AND THAT THE DRAWING SHOWN HEREON ACCURATELY DEPICTS THE PROPOSED LOCATION OF THE WELL **BELLA FEDERAL 41-7**. THIS CERTIFICATE DOES NOT REPRESENT A LAND SURVEY PLAT OR IMPROVEMENT SURVEY PLAT AS DEFINED BY C.R.S. 38-51-102 AND CANNOT BE RELIED UPON TO DETERMINE OWNERSHIP.

DANIEL J. CORRIELL, PLS 38065
COLORADO LICENSED PROFESSIONAL LAND SURVEYOR
FOR AND ON BEHALF OF P.F.S., LLC



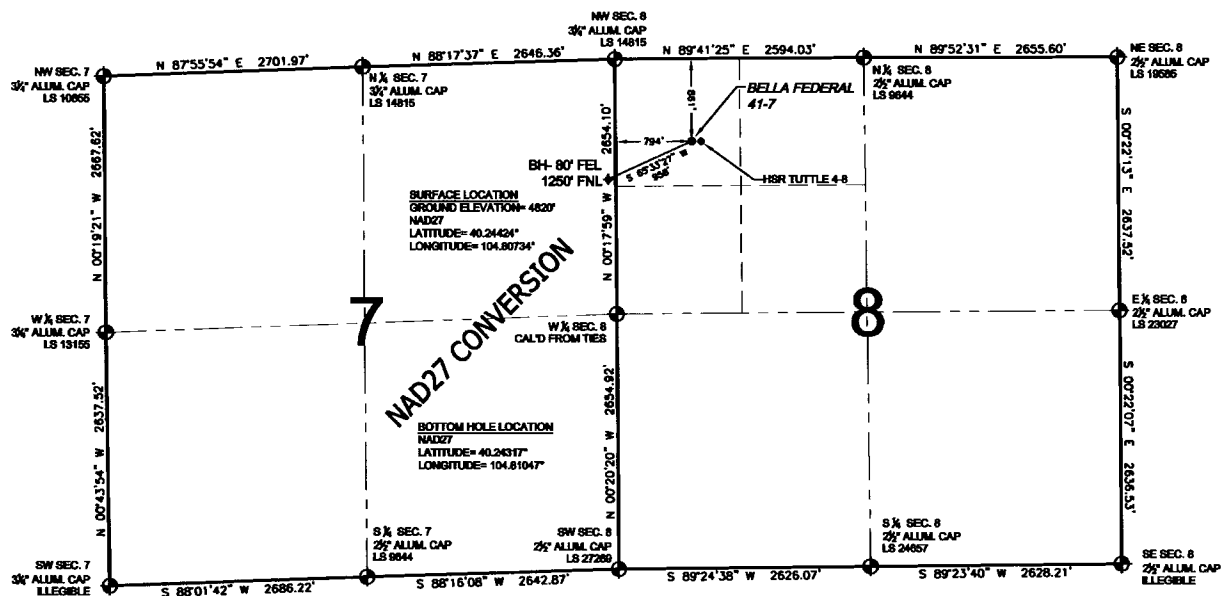
PREPARED BY:	FIELD DATE:	WELL NAME:
PFS Petroleum Field Services, LLC 1801 W. 13th Ave. Denver, CO 80204	05-29-09	BELLA FEDERAL 41-7
BY:	DRAWING DATE:	SURFACE LOCATION:
SMF	06-01-09	WELD COUNTY, COLORADO
		NW 1/4 NW 1/4, SEC. 8, T3N, R66W

NOTICE: ACCORDING TO COLORADO LAW YOU MUST COMMENCE ANY LEGAL ACTION BASED UPON ANY DEFECT IN THIS SURVEY WITHIN THREE YEARS AFTER YOU FIRST DISCOVER SUCH DEFECT. IN NO EVENT MAY ANY ACTION BASED UPON ANY DEFECT IN THIS SURVEY BE COMMENCED MORE THAN TEN YEARS FROM THIS SAID DATE OF THIS CERTIFICATION SHOWN HEREON.

EXHIBIT: NAD27 CONVERSION

SECTION 8, TOWNSHIP 3 NORTH, RANGE 66 WEST, 6TH P.M.

ILLEGIBLE



WELL **BELLA FEDERAL 41-7** TO BE LOCATED 861' FNL AND 794' FWL, SECTION 8, T3N, R66W OF THE 6th P.M.

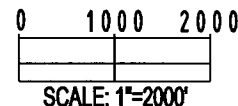
NOTES:

- THIS SURVEY WAS DONE BY GPS METHODS AND CONFORMS TO THE MINIMUM STANDARDS SET BY THE C.O.G.C.C., RULE NO. 215 (PDOP VALUE IS LESS THAN 6.0, LATITUDE AND LONGITUDE ARE ACCURATE TO 5 DECIMAL PLACES, AND GPS OBSERVATIONS ARE DIFFERENTIAL AND DONE BY QUALIFIED PERSONNEL.)
- ELEVATIONS SHOWN AT THE WELL HEAD, AS WELL AS HORIZONTAL CONTROL, ARE BASED ON GPS-RTK VALUES DERIVED FROM DOING 2-HOUR STATIC GPS SESSIONS AND REDUCTIONS USING O.P.U.S. SOLUTIONS.
VERTICAL = NAVD88; HORIZONTAL = NAD83/92
- THE BEARINGS SHOWN HEREON ARE BASED ON GPS OBSERVATIONS BETWEEN THE MONUMENTS SHOWN HEREON AS FOUND ON THE FIELD DATE BELOW.
- DISTANCES SHOWN ARE AT GROUND LEVEL, AS MEASURED IN THE FIELD, WITH TIES TO WELLS MEASURED AT A PERPENDICULAR TO SECTION LINES.

LEGEND

- = EXISTING MONUMENT
 = BOTTOM HOLE
 BH = BOTTOM HOLE
 = PROPOSED WELL
 = EXISTING WELL

NOTE: LATITUDE AND LONGITUDE SHOWN WERE CONVERTED FROM NAD83 USING CORPSCON 6.0 (PROGRAM). PFS DOES NOT WARRANT OR GUARANTEE THEIR ACCURACY.



PREPARED BY:



FIELD DATE:
05-29-09

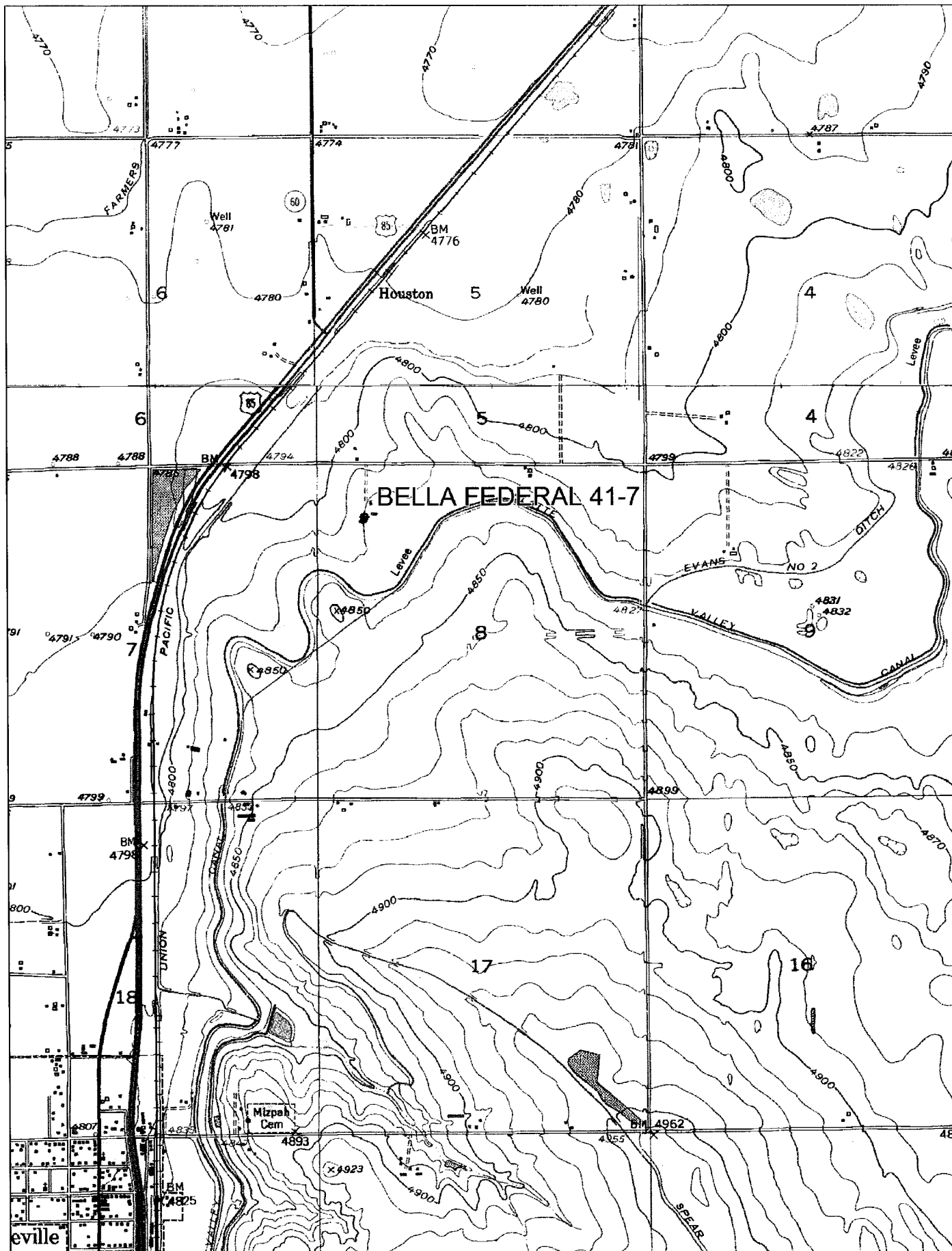
DRAWING DATE:
06-01-09

BY:
SMF

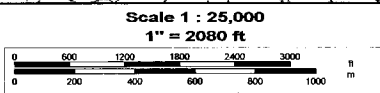
WELL NAME:
BELLA FEDERAL 41-7

SURFACE LOCATION:
WELD COUNTY, COLORADO
NW 1/4 NW 1/4, SEC. 8, T3N, R66W

NOTICE: ACCORDING TO COLORADO LAW YOU MUST COMMENCE ANY LEGAL ACTION BASED UPON ANY DEFECT IN THIS SURVEY WITHIN THREE YEARS AFTER YOU FIRST DISCOVER SUCH DEFECT. IN NO EVENT MAY ANY ACTION BASED UPON ANY DEFECT IN THIS SURVEY BE COMMENCED MORE THAN TEN YEARS FROM THIS SAID DATE OF THIS CERTIFICATION SHOWN HEREON.



© 2002 DeLorme. 3-D TopoQuads®. Data copyright of content owner.
www.delorme.com





A. Existing Well HSR-TUTTLE 4-8 is 47' E.

E. Buildings are 169' NE, 116' NE, 189' NE, 254' NE, 284' NE, 321' NE and 225' NE.

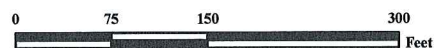
B. Edges of Ditch are 80' N, 333' NE, 305' NE and 307' E.

F. Overhead Powerline is 243' NE.

C. Edges of Fence are 344' N, 345' NE and 338' NE.

G. Utility Boxes are 208' NE and 247' NE.

D. Facilities Enclosures are 114' E and 201' E.



Legend

- | | | | |
|--|----------------------|--|---------------------|
| | Proposed Well | | Building/Residence |
| | Existing Well | | Oil & Gas Equipment |
| | Plugged Well | | Water Body |
| | Manhole | | Utility Box |
| | CattleGuard/Gate | | Railroad |
| | Bridge | | Sewer |
| | ECD | | Fence |
| | 400' Radius | | Overhead Power Line |
| | Facilities Enclosure | | Pipeline |
| | | | Access Road |
| | | | Ditch/Canal |

400ft Radius Map BELLA FEDERAL 41-7

Surface Location: T3N R66W S8
Description of surface uses : Open Field

Field Date: 05/29/2009
Drawing Date: 06/02/2009
Drafter: BHF
Checked By: MPS

Aerial Photo supplied by NAIP - 2005

Prepared for:
**KERR-MCGEE OIL &
GAS ONSHORE LP**



Use our resources to find yours!
www.petro-fs.com

1801 W. 13th Ave Suite 207
Denver, CO 80204 Rifle, CO 81650
(303) 928-7128 (970) 625-4740