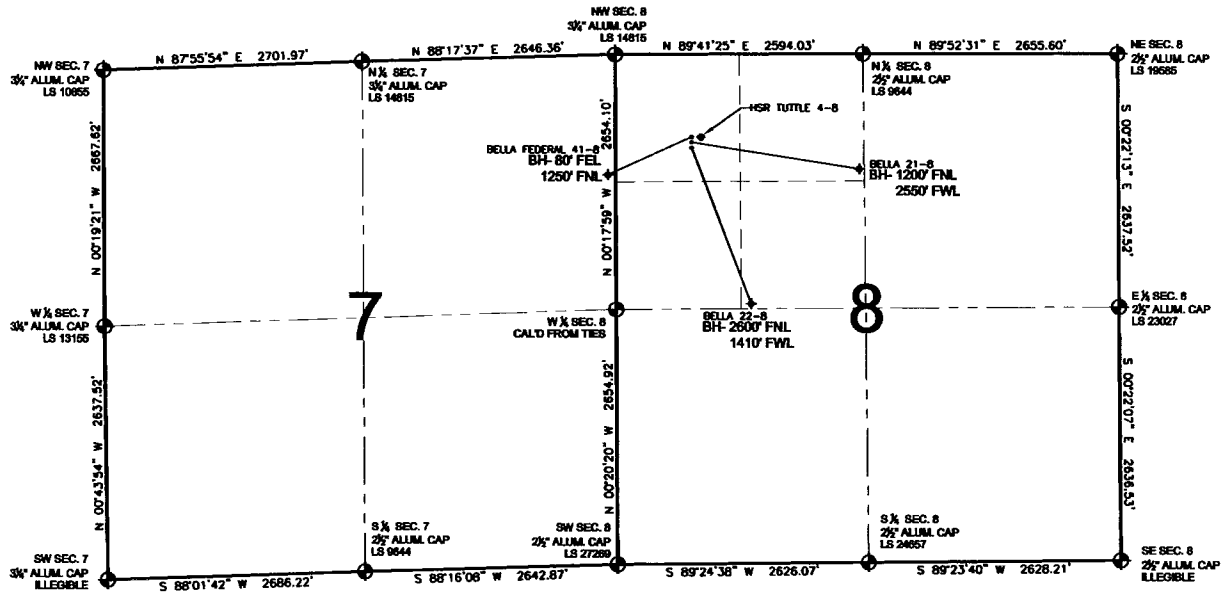


PAD DRAWING - BELLA 3 PAD

SECTION 8, TOWNSHIP 3 NORTH, RANGE 66 WEST, 6TH P.M.



LEGEND

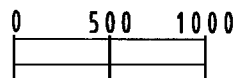
- = EXISTING MONUMENT
 = PROPOSED WELL
 = BOTTOM HOLE
 BH= BOTTOM HOLE
 = EXISTING WELL

NOTES:

- THIS SURVEY WAS DONE BY GPS METHODS AND CONFORMS TO THE MINIMUM STANDARDS SET BY THE C.O.G.C.C., RULE NO. 215 (PDOP VALUE IS LESS THAN 6.0, LATITUDE AND LONGITUDE ARE ACCURATE TO 5 DECIMAL PLACES, AND GPS OBSERVATIONS ARE DIFFERENTIAL AND DONE BY QUALIFIED PERSONNEL.)
- ELEVATIONS SHOWN AT THE WELL HEAD, AS WELL AS HORIZONTAL CONTROL, ARE BASED ON GPS-RTK VALUES DERIVED FROM DOING 2-HOUR STATIC GPS SESSIONS AND REDUCTIONS USING O.P.U.S. SOLUTIONS.
VERTICAL = NAVD88; HORIZONTAL = NAD83/92.3.
- THE BEARINGS SHOWN HEREON ARE BASED ON GPS OBSERVATIONS BETWEEN THE MONUMENTS SHOWN HEREON AS FOUND ON THE FIELD DATE BELOW.
- DISTANCES SHOWN ARE AT GROUND LEVEL, AS MEASURED IN THE FIELD, WITH TIES TO WELLS MEASURED AT PERPENDICULAR TO SECTION LINES.

NOTES:

- BELLA 22-8 TO BE AT 893' FNL, 794' FWL.
 BOTTOM HOLE AT 2600' FNL & 1410' FWL.
 BELLA 21-8 TO BE AT 877' FNL, 794' FWL.
 BOTTOM HOLE AT 1200' FNL & 2550' FWL.
 BELLA FEDERAL 41-7 TO BE AT 861' FNL, 794' FWL.
 BOTTOM HOLE AT 80' FEL & 1250' FNL.
 HSR TUTTLE 4-8 TO BE AT 861' FNL, 841' FWL.



SCALE: 1"=1000'

REVISIONS

INITIAL	DATE

PREPARED BY:



KERR-MCGEE OIL & GAS ONSHORE LP

FIELD DATE:
05-29-09

DRAWING DATE:
06-01-09

BY:
SMF

WELL NAME:
BELLA 3 PAD

SURFACE LOCATION:

WELD COUNTY, COLORADO
NW 1/4 NW 1/4, SEC. 8, T3N, R66W