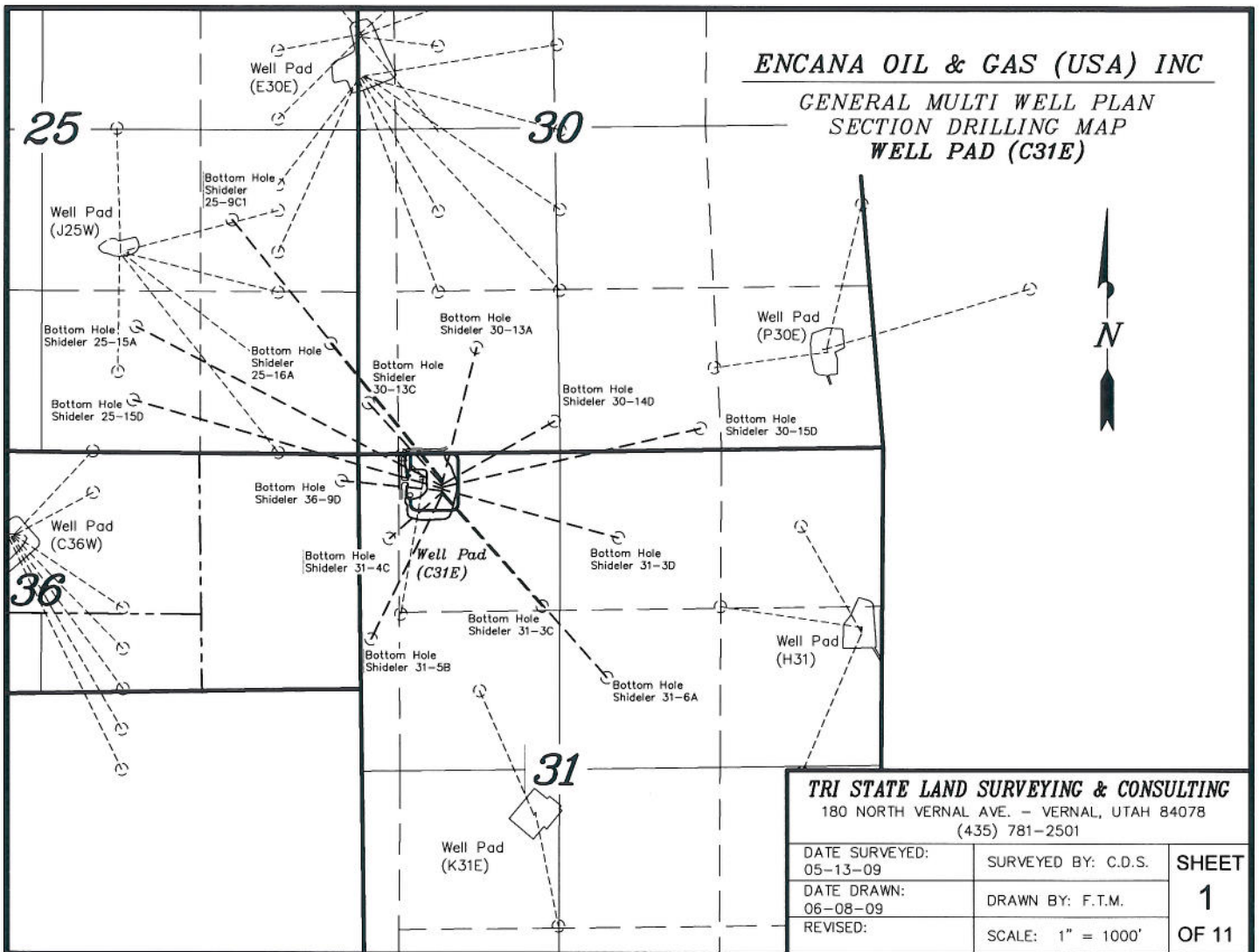


ENCANA OIL & GAS (USA) INC

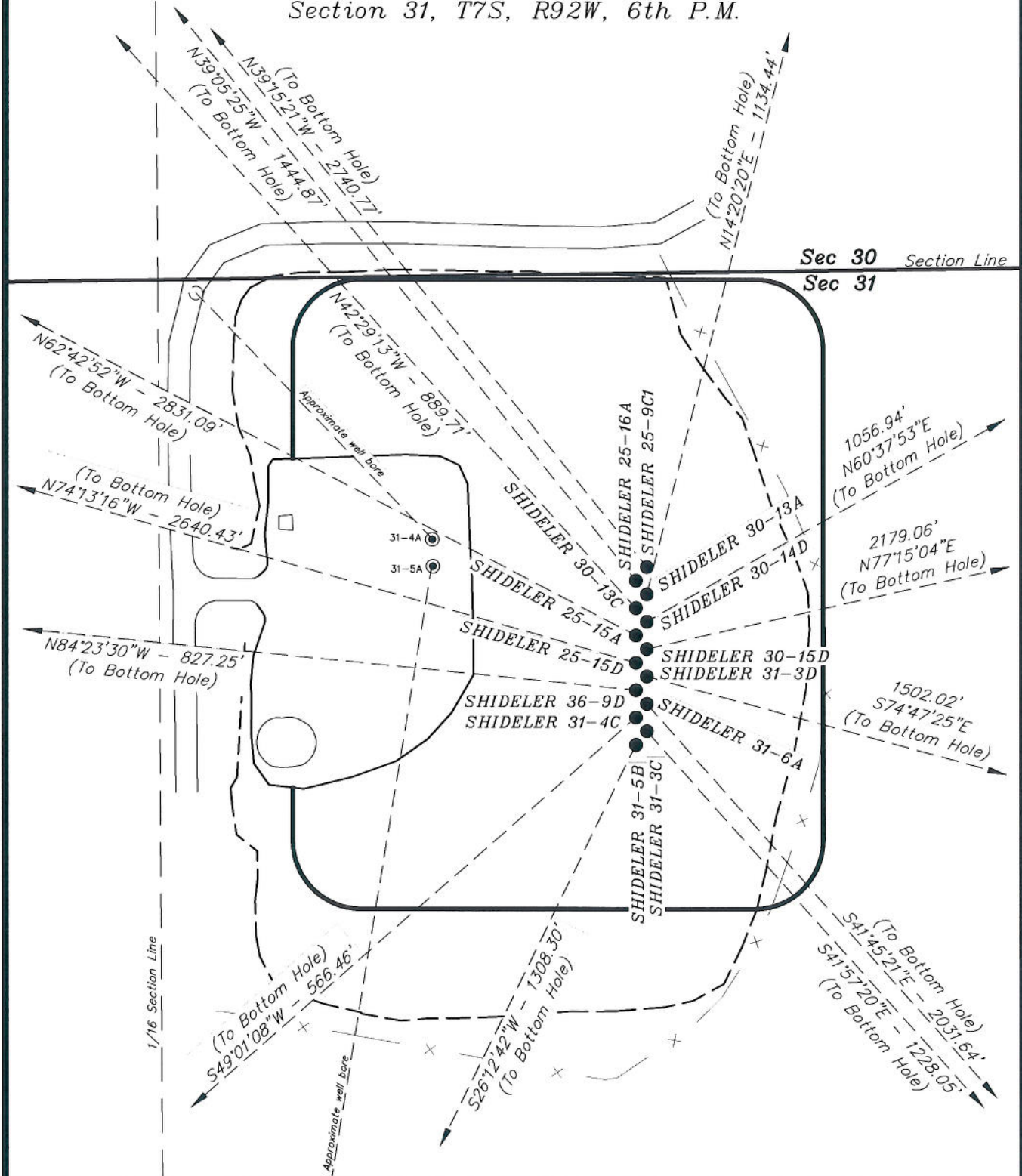
**GENERAL MULTI WELL PLAN
SECTION DRILLING MAP
WELL PAD (C31E)**



ENCANA OIL & GAS (USA) INC

DETAILED MULTI WELL PLAN WELL PAD INTERFERENCE PLAT WELL PAD (C31E)

Section 31, T7S, R92W, 6th P.M.



SURVEYED BY: D.P.	DATE SURVEYED: 05-13-09
DRAWN BY: F.T.M.	DATE DRAWN: 06-08-09
SCALE: 1" = 100'	REVISED:

Tri State
Land Surveying, Inc.
180 NORTH VERNAL AVE. VERNAL, UTAH 84078
(435) 781-2501

SHEET
3a
OF 11

ENCANA OIL & GAS (USA) INC

DETAILED MULTI WELL PLAN WELL PAD INTERFERENCE PLAT WELL PAD (C31E)

Section 31, T7S, R92W, 6th P.M.

TOP HOLE FOOTAGES

SHIDELER 25-9C1 (C31E)
215' FNL & 691' FWL
SHIDELER 25-16A (C31E)
225' FNL & 683' FWL
SHIDELER 30-13A (C31E)
235' FNL & 691' FWL
SHIDELER 30-13C (C31E)
245' FNL & 683' FWL
SHIDELER 30-14D (C31E)
255' FNL & 691' FWL
SHIDELER 25-15A (C31E)
265' FNL & 683' FWL
SHIDELER 30-15D (C31E)
275' FNL & 691' FWL
SHIDELER 25-15D (C31E)
285' FNL & 683' FWL
SHIDELER 31-3D (C31E)
295' FNL & 690' FWL
SHIDELER 36-9D (C31E)
305' FNL & 682' FWL

TOP HOLE FOOTAGES

SHIDELER 31-6A (C31E)
315' FNL & 690' FWL
SHIDELER 31-4C (C31E)
325' FNL & 682' FWL
SHIDELER 31-3C (C31E)
335' FNL & 690' FWL
SHIDELER 31-5B (C31E)
345' FNL & 682' FWL

BOTTOM HOLE FOOTAGES

SHIDELER 31-6A (C31E)
1850' FNL & 2025' FWL
SHIDELER 31-4C (C31E)
690' FNL & 250' FWL
SHIDELER 31-3C (C31E)
1260' FNL & 1500' FWL
SHIDELER 31-5B (C31E)
1510' FNL & 90' FWL

BOTTOM HOLE FOOTAGES

SHIDELER 25-9C1 (C31E)
1910' FSL & 1040' FEL
SHIDELER 25-16A (C31E)
905' FSL & 225' FEL
SHIDELER 30-13A (C31E)
860' FSL & 975' FWL
SHIDELER 30-13C (C31E)
420' FSL & 85' FWL
SHIDELER 30-14D (C31E)
250' FSL & 1615' FWL
SHIDELER 25-15A (C31E)
1030' FSL & 1830' FEL
SHIDELER 30-15D (C31E)
175' FSL & 1485' FEL
SHIDELER 25-15D (C31E)
430' FSL & 1855' FEL
SHIDELER 31-3D (C31E)
710' FNL & 2135' FWL
SHIDELER 36-9D (C31E)
1705' FSL & 140' FEL

EXISTING LATITUDE & LONGITUDE Surface position of Wells (NAD 27)

WELL	LATITUDE	LONGITUDE
31-4A	39° 24' 34.02"	107° 42' 44.04"
31-5A	39° 24' 33.83"	107° 42' 44.04"

RELATIVE COORDINATES From top hole to bottom hole

WELL	NORTH	EAST	WELL	NORTH	EAST
25-9C1	2122'	-1734'	25-15D	718'	-2541'
25-16A	1121'	-911'	31-3D	-394'	1449'
30-13A	1099'	281'	36-9D	81'	-823'
30-13C	656'	-601'	31-6A	-1516'	1353'
30-14D	518'	921'	31-4C	-371'	-428'
25-15A	1298'	-2516'	31-3C	-913'	821'
30-15D	481'	2125'	31-5B	-1174'	-578'

LATITUDE & LONGITUDE Surface position of Wells (NAD 27)

WELL	LATITUDE	LONGITUDE
25-9C1	39° 24' 33.82"	107° 42' 42.03"
25-16A	39° 24' 33.73"	107° 42' 42.13"
30-13A	39° 24' 33.63"	107° 42' 42.03"
30-13C	39° 24' 33.53"	107° 42' 42.13"
30-14D	39° 24' 33.43"	107° 42' 42.03"
25-15A	39° 24' 33.33"	107° 42' 42.13"
30-15D	39° 24' 33.23"	107° 42' 42.03"
25-15D	39° 24' 33.13"	107° 42' 42.14"
31-3D	39° 24' 33.03"	107° 42' 42.03"
36-9D	39° 24' 32.93"	107° 42' 42.14"
31-6A	39° 24' 32.84"	107° 42' 42.03"
31-4C	39° 24' 32.74"	107° 42' 42.14"
31-3C	39° 24' 32.64"	107° 42' 42.03"
31-5B	39° 24' 32.54"	107° 42' 42.14"

LATITUDE & LONGITUDE Bottom hole position of Wells (NAD 27)

WELL	LATITUDE	LONGITUDE
25-9C1	39° 24' 54.81"	107° 43' 04.10"
25-16A	39° 24' 44.81"	107° 42' 53.73"
30-13A	39° 24' 44.48"	107° 42' 38.44"
30-13C	39° 24' 40.01"	107° 42' 49.78"
30-14D	39° 24' 38.54"	107° 42' 30.30"
25-15A	39° 24' 46.17"	107° 43' 14.17"
30-15D	39° 24' 37.96"	107° 42' 14.96"
25-15D	39° 24' 40.25"	107° 43' 14.49"
31-3D	39° 24' 29.13"	107° 42' 23.58"
36-9D	39° 24' 33.74"	107° 42' 52.62"
31-6A	39° 24' 17.85"	107° 42' 24.82"
31-4C	39° 24' 29.07"	107° 42' 47.59"
31-3C	39° 24' 23.61"	107° 42' 31.59"
31-5B	39° 24' 20.95"	107° 42' 49.51"

SURVEYED BY: D.P. DATE SURVEYED: 05-13-09
DRAWN BY: F.T.M. DATE DRAWN: 06-08-09
SCALE: 1" = 100' REVISED:

Tri State
Land Surveying, Inc.
180 NORTH VERNAL AVE. VERNAL, UTAH 84078
(435) 781-2501

SHEET
3b
OF 11