

ENCANA OIL & GAS (USA) INC

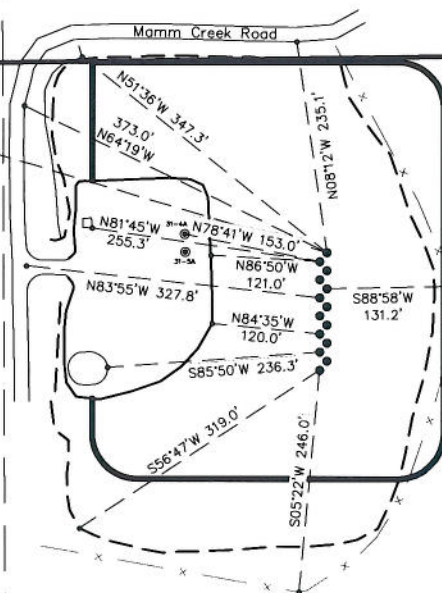
LOCATION DRAWING ADDENDUM TO LEGAL PLATS FOR WELL PAD (C31E) Section 31, T7S, R92W, 6th P.M.

1947 B.L.M.
Brass Cap
Reference
Marker

R93W

R92W

1/16 Section Line

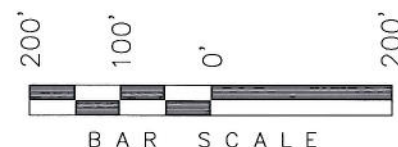


Sec 30
Sec 31

Section Line



SURFACE USE NOTE:
Surface use of the well site is
grazing. Vegetation consists mainly
of sage brush and native grasses.



Feature	Distance from well head
Building	1370'
Above Ground Utility	2296'
Public Road	235'
Railroad	8.8 Miles

SURVEYED BY: C.D.S. DATE SURVEYED: 05-13-09
DRAWN BY: F.T.M. DATE DRAWN: 06-08-09
SCALE: 1" = 200' REVISED:

Tri State
Land Surveying, Inc.
180 NORTH VERNAL AVE. VERNAL, UTAH 84078

(435) 781-2501

SHEET
20
OF 11