

KERR MCGEE OIL & GAS ONSHORE LP

Location: COLORADO Slot: SLOT#01 KCB 27-14 (701'FNL & 779'FEL)
 Field: WELD COUNTY (ANADARKO) Well: KCB 27-14
 Facility: SEC.14-T5N-R64W Wellbore: KCB 27-14 PWB



Well Profile Data

Design Comment	MD (ft)	Inc (°)	Az (°)	TVD (ft)	Local N (ft)	Local E (ft)	DLS (°/100ft)	VS (ft)
Tie On	15.00	0.000	322.125	15.00	0.00	0.00	0.00	0.00
End of Tangent	1000.00	0.000	322.125	1000.00	0.00	0.00	0.00	0.00
End of Build (S)	1600.00	12.000	322.125	1595.62	49.42	-38.43	2.00	62.60
End of Tangent (S)	4815.96	12.000	322.125	4741.31	577.21	-448.93	0.00	731.24
End of Drop (S)	5415.96	0.000	322.125	5336.93	626.62	-487.37	2.00	793.84
End of Tangent	6932.03	0.000	322.125	6853.00	626.62	-487.37	0.00	793.84

Location Information

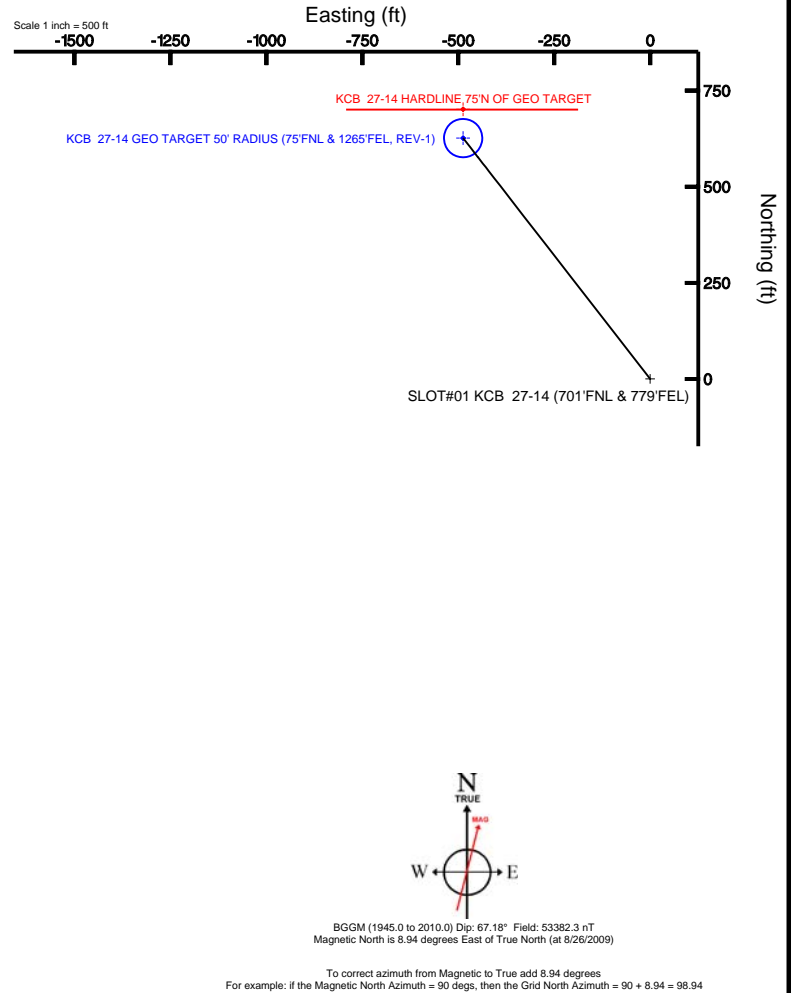
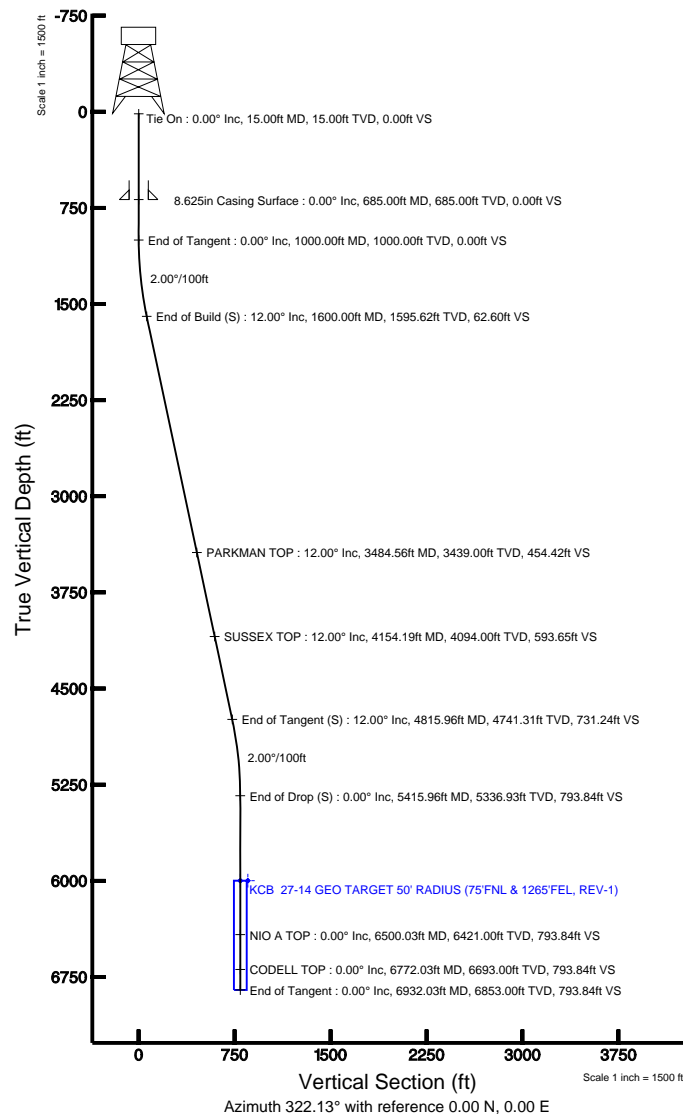
Facility Name			Grid East (USft)	Grid North (USft)	Latitude	Longitude
SEC. 14-T5N-R64W			3275444.701	1391765.043	40°24'16.488"N	104°30'39.312"W
Slot	Local N (ft)	Local E (ft)	Grid East (USft)	Grid North (USft)	Latitude	Longitude
SLOT#01 KCB 27-14 (701'FNL & 779'FEL)	0.00	0.00	3275444.701	1391765.043	40°24'16.488"N	104°30'39.312"W
Rig on SLOT#01 KCB 27-14 (701'FNL & 779'FEL) (RT) to Mud line (Facility: SEC. 14-T5N-R64W)					4606ft	
Mean Sea Level to Mud line (Facility: SEC. 14-T5N-R64W)					0ft	
Rig on SLOT#01 KCB 27-14 (701'FNL & 779'FEL) (RT) to Mean Sea Level					4606ft	

Targets

Name	MD (ft)	TVD (ft)	Local N (ft)	Local E (ft)	Grid East (USft)	Grid North (USft)	Latitude	Longitude
KCB 27-14 GEO TARGET 50' RADIUS (75'FNL & 1265'FEL, REV-1)	6000.00	626.62	-487.37	3274950.39	1392386.16	40°24'22.680"N	104°30'45.612"W	
KCB 27-14 HARDLINE 75N OF GEO TARGET	6000.00	701.62	-487.37	3274949.56	1392461.15	40°24'23.421"N	104°30'45.612"W	

Plot reference wellpath is KCB 27-14 (REV-A.0) PWP

True vertical depths are referenced to Rig on SLOT#01 KCB 27-14 (701'FNL & 779'FEL) (RT)	Grid System: NAD83 / Lambert Colorado State Planes, Northern Zone (501), US feet
Measured depths are referenced to Rig on SLOT#01 KCB 27-14 (701'FNL & 779'FEL) (RT)	North Reference: True north
Rig on SLOT#01 KCB 27-14 (701'FNL & 779'FEL) (RT) to Mean Sea Level: 4606 feet	Scale: True distance
Mean Sea Level to Mud line (Facility: SEC.14-T5N-R64W): 0 feet	Depths are in feet
Coordinates are in feet referenced to Slot	Created by: cookdamm on 8/26/2009





Planned Wellpath Report

KCB 27-14 (REV-A.0) PWP

Page 1 of 5



INTEQ

REFERENCE WELLPATH IDENTIFICATION

Operator	KERR MCGEE OIL & GAS ONSHORE LP	Slot	SLOT#01 KCB 27-14 (701'FNL & 779'FEL)
Area	COLORADO	Well	KCB 27-14
Field	WELD COUNTY (ANADARKO)	Wellbore	KCB 27-14 PWB
Facility	SEC.14-T5N-R64W		

REPORT SETUP INFORMATION

Projection System	NAD83 / Lambert Colorado State Planes, Northern Zone (501), US feet	Software System	WellArchitect® 2.0
North Reference	True	User	Cookdanm
Scale	0.99996	Report Generated	8/26/2009 at 1:10:26 PM
Convergence at slot	0.64° East	Database/Source file	WellArchitect_Denver/KCB_27-14_PWB.xml

WELLPATH LOCATION

	Local coordinates		Grid coordinates		Geographic coordinates	
	North[ft]	East[ft]	Easting[USft]	Northing[USft]	Latitude	Longitude
Slot Location	0.00	0.00	3275444.70	1391765.04	40°24'16.488"N	104°30'39.312"W
Facility Reference Pt			3275444.70	1391765.04	40°24'16.488"N	104°30'39.312"W
Field Reference Pt			3197771.84	1268891.29	40°04'09.600"N	104°47'36.000"W

WELLPATH DATUM

Calculation method	Minimum curvature	Rig on SLOT#01 KCB 27-14 (701'FNL & 779'FEL) (RT) to Facility Vertical Datum	4606.00f
Horizontal Reference Pt	Slot	Rig on SLOT#01 KCB 27-14 (701'FNL & 779'FEL) (RT) to Mean Sea Level	4606.00f
Vertical Reference Pt	Rig on SLOT#01 KCB 27-14 (701'FNL & 779'FEL) (RT)	Facility Vertical Datum to Mud Line (Facility)	0.00ft
MD Reference Pt	Rig on SLOT#01 KCB 27-14 (701'FNL & 779'FEL) (RT)	Section Origin	N 0.00, I
Field Vertical Reference	Mean Sea Level	Section Azimuth	322.13°



Planned Wellpath Report

KCB 27-14 (REV-A.0) PWP

Page 2 of 5



INTEQ

REFERENCE WELLPATH IDENTIFICATION

Operator	KERR MCGEE OIL & GAS ONSHORE LP	Slot	SLOT#01 KCB 27-14 (701'FNL & 779'FEL)
Area	COLORADO	Well	KCB 27-14
Field	WELD COUNTY (ANADARKO)	Wellbore	KCB 27-14 PWB
Facility	SEC.14-T5N-R64W		

WELLPATH DATA (80 stations) † = interpolated/extrapolated station

MD [ft]	Inclination [°]	Azimuth [°]	TVD [ft]	Vert Sect [ft]	North [ft]	East [ft]	DLS [°/100ft]	Comments
0.00†	0.000	322.125	0.00	0.00	0.00	0.00	0.00	
15.00	0.000	322.125	15.00	0.00	0.00	0.00	0.00	Tie On
115.00†	0.000	322.125	115.00	0.00	0.00	0.00	0.00	
215.00†	0.000	322.125	215.00	0.00	0.00	0.00	0.00	
315.00†	0.000	322.125	315.00	0.00	0.00	0.00	0.00	
415.00†	0.000	322.125	415.00	0.00	0.00	0.00	0.00	
515.00†	0.000	322.125	515.00	0.00	0.00	0.00	0.00	
615.00†	0.000	322.125	615.00	0.00	0.00	0.00	0.00	
715.00†	0.000	322.125	715.00	0.00	0.00	0.00	0.00	
815.00†	0.000	322.125	815.00	0.00	0.00	0.00	0.00	
915.00†	0.000	322.125	915.00	0.00	0.00	0.00	0.00	
1000.00	0.000	322.125	1000.00	0.00	0.00	0.00	0.00	End of Tangent
1015.00†	0.300	322.125	1015.00	0.04	0.03	-0.02	2.00	
1115.00†	2.300	322.125	1114.97	2.31	1.82	-1.42	2.00	
1215.00†	4.300	322.125	1214.80	8.06	6.37	-4.95	2.00	
1315.00†	6.300	322.125	1314.37	17.30	13.66	-10.62	2.00	
1415.00†	8.300	322.125	1413.55	30.01	23.69	-18.42	2.00	
1515.00†	10.300	322.125	1512.23	46.17	36.44	-28.34	2.00	
1600.00	12.000	322.125	1595.62	62.60	49.42	-38.43	2.00	End of Build (S)
1615.00†	12.000	322.125	1610.30	65.72	51.88	-40.35	0.00	
1715.00†	12.000	322.125	1708.11	86.51	68.29	-53.11	0.00	
1815.00†	12.000	322.125	1805.92	107.30	84.70	-65.88	0.00	
1915.00†	12.000	322.125	1903.74	128.09	101.11	-78.64	0.00	
2015.00†	12.000	322.125	2001.55	148.89	117.52	-91.41	0.00	
2115.00†	12.000	322.125	2099.37	169.68	133.94	-104.17	0.00	
2215.00†	12.000	322.125	2197.18	190.47	150.35	-116.94	0.00	
2315.00†	12.000	322.125	2295.00	211.26	166.76	-129.70	0.00	
2415.00†	12.000	322.125	2392.81	232.05	183.17	-142.46	0.00	
2515.00†	12.000	322.125	2490.63	252.84	199.58	-155.23	0.00	
2615.00†	12.000	322.125	2588.44	273.63	215.99	-167.99	0.00	
2715.00†	12.000	322.125	2686.26	294.42	232.41	-180.76	0.00	
2815.00†	12.000	322.125	2784.07	315.22	248.82	-193.52	0.00	
2915.00†	12.000	322.125	2881.89	336.01	265.23	-206.29	0.00	
3015.00†	12.000	322.125	2979.70	356.80	281.64	-219.05	0.00	
3115.00†	12.000	322.125	3077.52	377.59	298.05	-231.82	0.00	
3215.00†	12.000	322.125	3175.33	398.38	314.46	-244.58	0.00	
3315.00†	12.000	322.125	3273.15	419.17	330.87	-257.34	0.00	
3415.00†	12.000	322.125	3370.96	439.96	347.29	-270.11	0.00	
3484.56†	12.000	322.125	3439.00	454.42	358.70	-278.99	0.00	PARKMAN TOP
3515.00†	12.000	322.125	3468.78	460.75	363.70	-282.87	0.00	
3615.00†	12.000	322.125	3566.59	481.54	380.11	-295.64	0.00	
3715.00†	12.000	322.125	3664.41	502.34	396.52	-308.40	0.00	
3815.00†	12.000	322.125	3762.22	523.13	412.93	-321.17	0.00	
3915.00†	12.000	322.125	3860.03	543.92	429.34	-333.93	0.00	
4015.00†	12.000	322.125	3957.85	564.71	445.76	-346.70	0.00	



Planned Wellpath Report

KCB 27-14 (REV-A.0) PWP

Page 3 of 5



INTEQ

REFERENCE WELLPATH IDENTIFICATION

Operator	KERR MCGEE OIL & GAS ONSHORE LP	Slot	SLOT#01 KCB 27-14 (701'FNL & 779'FEL)
Area	COLORADO	Well	KCB 27-14
Field	WELD COUNTY (ANADARKO)	Wellbore	KCB 27-14 PWB
Facility	SEC.14-T5N-R64W		

WELLPATH DATA (80 stations) † = interpolated/extrapolated station

MD [ft]	Inclination [°]	Azimuth [°]	TVD [ft]	Vert Sect [ft]	North [ft]	East [ft]	DLS [°/100ft]	Comments
4115.00†	12.000	322.125	4055.66	585.50	462.17	-359.46	0.00	
4154.19†	12.000	322.125	4094.00	593.65	468.60	-364.46	0.00	SUSSEX TOP
4215.00†	12.000	322.125	4153.48	606.29	478.58	-372.22	0.00	
4315.00†	12.000	322.125	4251.29	627.08	494.99	-384.99	0.00	
4415.00†	12.000	322.125	4349.11	647.87	511.40	-397.75	0.00	
4515.00†	12.000	322.125	4446.92	668.67	527.81	-410.52	0.00	
4615.00†	12.000	322.125	4544.74	689.46	544.23	-423.28	0.00	
4715.00†	12.000	322.125	4642.55	710.25	560.64	-436.05	0.00	
4815.00†	12.000	322.125	4740.37	731.04	577.05	-448.81	0.00	
4815.96	12.000	322.125	4741.31	731.24	577.21	-448.93	0.00	End of Tangent (S)
4915.00†	10.019	322.125	4838.52	750.15	592.14	-460.55	2.00	
5015.00†	8.019	322.125	4937.28	765.83	604.51	-470.17	2.00	
5115.00†	6.019	322.125	5036.52	778.05	614.16	-477.67	2.00	
5215.00†	4.019	322.125	5136.13	786.80	621.06	-483.04	2.00	
5315.00†	2.019	322.125	5235.99	792.06	625.22	-486.28	2.00	
5415.00†	0.019	322.125	5335.97	793.84	626.62	-487.37	2.00	
5415.96	0.000	322.125	5336.93 ¹	793.84	626.62	-487.37	2.00	End of Drop (S)
5515.00†	0.000	322.125	5435.97	793.84	626.62	-487.37	0.00	
5615.00†	0.000	322.125	5535.97	793.84	626.62	-487.37	0.00	
5715.00†	0.000	322.125	5635.97	793.84	626.62	-487.37	0.00	
5815.00†	0.000	322.125	5735.97	793.84	626.62	-487.37	0.00	
5915.00†	0.000	322.125	5835.97	793.84	626.62	-487.37	0.00	
6015.00†	0.000	322.125	5935.97	793.84	626.62	-487.37	0.00	
6115.00†	0.000	322.125	6035.97	793.84	626.62	-487.37	0.00	
6215.00†	0.000	322.125	6135.97	793.84	626.62	-487.37	0.00	
6315.00†	0.000	322.125	6235.97	793.84	626.62	-487.37	0.00	
6415.00†	0.000	322.125	6335.97	793.84	626.62	-487.37	0.00	
6500.03†	0.000	322.125	6421.00	793.84	626.62	-487.37	0.00	NIO A TOP
6515.00†	0.000	322.125	6435.97	793.84	626.62	-487.37	0.00	
6615.00†	0.000	322.125	6535.97	793.84	626.62	-487.37	0.00	
6715.00†	0.000	322.125	6635.97	793.84	626.62	-487.37	0.00	
6772.03†	0.000	322.125	6693.00	793.84	626.62	-487.37	0.00	CODELL TOP
6815.00†	0.000	322.125	6735.97	793.84	626.62	-487.37	0.00	
6915.00†	0.000	322.125	6835.97	793.84	626.62	-487.37	0.00	
6932.03	0.000	322.125	6853.00	793.84	626.62	-487.37	0.00	End of Tangent



Planned Wellpath Report

KCB 27-14 (REV-A.0) PWP

Page 4 of 5



INTEQ

REFERENCE WELLPATH IDENTIFICATION

Operator	KERR MCGEE OIL & GAS ONSHORE LP	Slot	SLOT#01 KCB 27-14 (701'FNL & 779'FEL)
Area	COLORADO	Well	KCB 27-14
Field	WELD COUNTY (ANADARKO)	Wellbore	KCB 27-14 PWB
Facility	SEC.14-T5N-R64W		

HOLE & CASING SECTIONS Ref Wellbore: KCB 27-14 PWB Ref Wellpath: KCB 27-14 (REV-A.0) PWP

String/Diameter	Start MD [ft]	End MD [ft]	Interval [ft]	Start TVD [ft]	End TVD [ft]	Start N/S [ft]	Start E/W [ft]	End N/S [ft]	End E/W [ft]
12.25in Open Hole	15.00	685.00	670.00	15.00	685.00	0.00	0.00	0.00	0.00
8.625in Casing Surface	15.00	685.00	670.00	15.00	685.00	0.00	0.00	0.00	0.00
7.875in Open Hole	685.00	6932.03	6247.03	685.00	6853.00	0.00	0.00	626.62	-487.37

TARGETS

Name	MD [ft]	TVD [ft]	North [ft]	East [ft]	Grid East [srv ft]	Grid North [srv ft]	Latitude	Longitude	Shape
1) KCB 27-14 GEO TARGET 50' RADIUS (75'FNL & 1265'FEL, REV-1)		6000.00	626.62	-487.37	3274950.39	1392386.16	40°24'22.680"N	104°30'45.612"W	circle
KCB 27-14 HARDLINE 75'N OF GEO TARGET		6000.00	701.62	-487.37	3274949.56	1392461.15	40°24'23.421"N	104°30'45.612"W	point

SURVEY PROGRAM Ref Wellbore: KCB 27-14 PWB Ref Wellpath: KCB 27-14 (REV-A.0) PWP

Start MD [ft]	End MD [ft]	Positional Uncertainty Model	Log Name/Comment	Wellbore
15.00	6932.03	MTC (Collar, post-2000) (Standard)		KCB 27-14 PWB



Planned Wellpath Report

KCB 27-14 (REV-A.0) PWP

Page 5 of 5



INTEQ

REFERENCE WELLPATH IDENTIFICATION

Operator	KERR MCGEE OIL & GAS ONSHORE LP	Slot	SLOT#01 KCB 27-14 (701'FNL & 779'FEL)
Area	COLORADO	Well	KCB 27-14
Field	WELD COUNTY (ANADARKO)	Wellbore	KCB 27-14 PWB
Facility	SEC.14-T5N-R64W		

WELLPATH COMMENTS

MD [ft]	Inclination [°]	Azimuth [°]	TVD [ft]	Comment
3484.56	12.000	322.125	3439.00	PARKMAN TOP
4154.19	12.000	322.125	4094.00	SUSSEX TOP
6500.03	0.000	322.125	6421.00	NIO A TOP
6772.03	0.000	322.125	6693.00	CODELL TOP