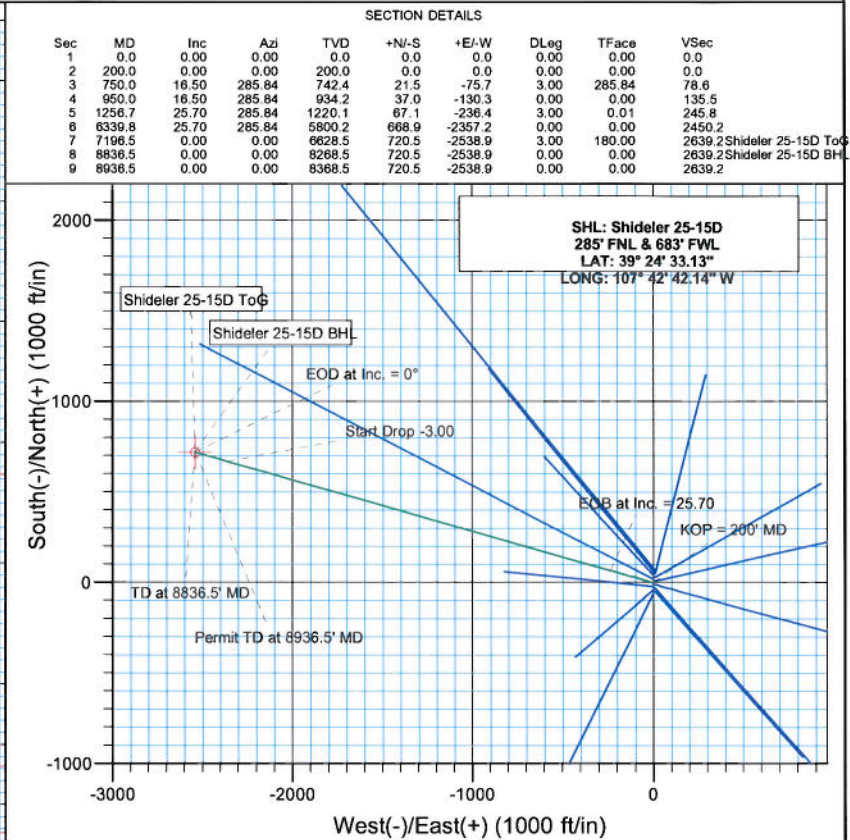
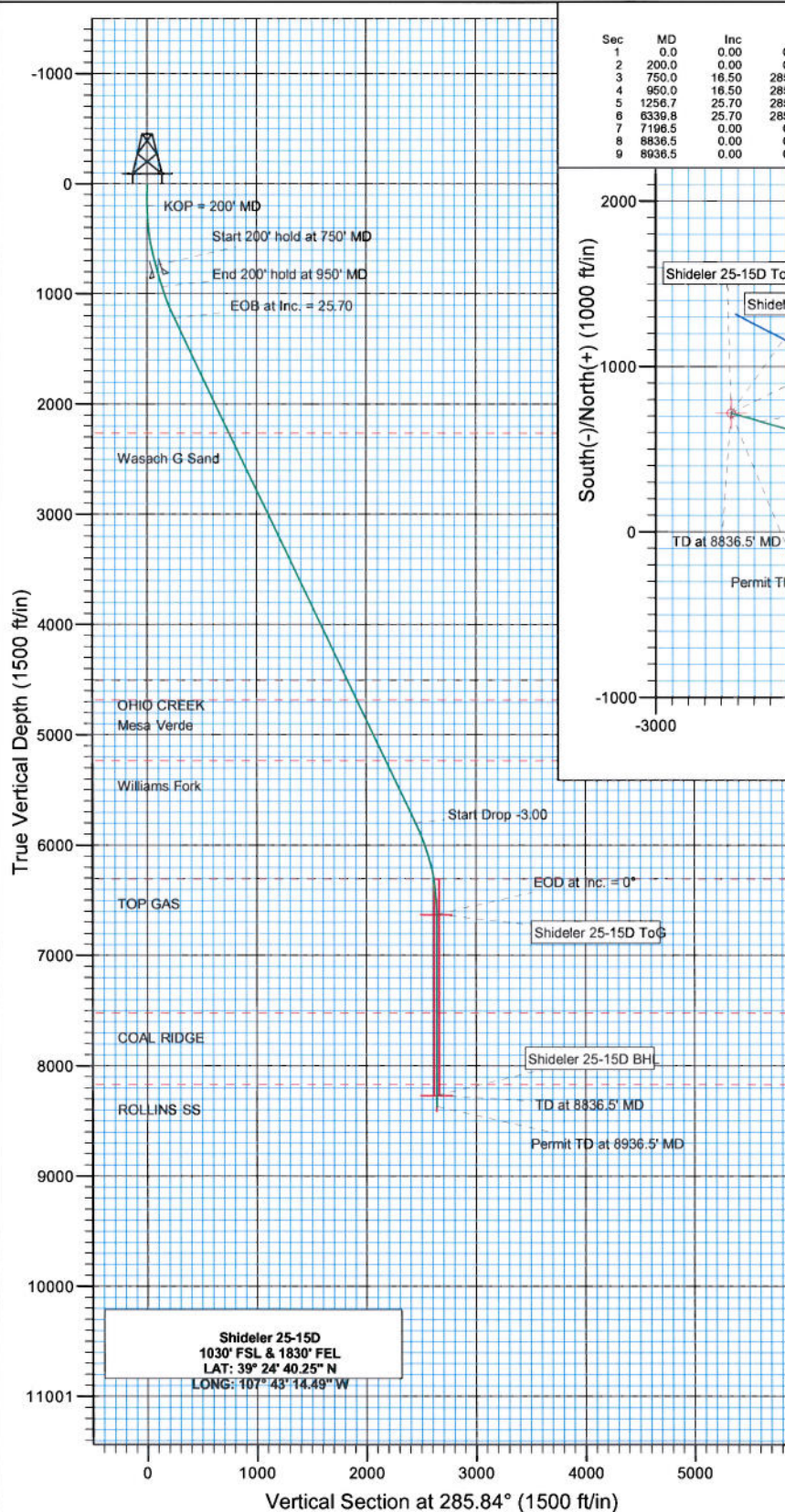




Project: Mamm Creek
 Site: C31E Pad (NENW 31-7S-92W)
 Well: Shideler 25-15D
 Wellbore: DD
 Design: Plan #1



SECTION DETAILS									
Sec	MD	Inc	Azi	TVD	+N/-S	+E/-W	DLeg	TFace	VSec
1	0.0	0.00	0.00	0.0	0.0	0.0	0.00	0.00	0.0
2	200.0	0.00	0.00	200.0	0.0	0.0	0.00	0.00	0.0
3	750.0	16.50	285.84	742.4	21.5	-75.7	3.00	285.84	78.6
4	950.0	16.50	285.84	934.2	37.0	-130.3	0.00	0.00	135.5
5	1256.7	25.70	285.84	1220.1	67.1	-236.4	3.00	0.01	245.8
6	6339.8	25.70	285.84	5800.2	668.9	-2357.2	0.00	0.00	2450.2
7	7196.5	0.00	0.00	6628.5	720.5	-2538.9	3.00	180.00	2639.2 Shideler 25-15D ToG
8	8836.5	0.00	0.00	8268.5	720.5	-2538.9	0.00	0.00	2639.2 Shideler 25-15D BHL
9	8936.5	0.00	0.00	8368.5	720.5	-2538.9	0.00	0.00	2639.2

FORMATION TOP DETAILS		
TVDPath	MDPath	Formation
2263.5	2414.8	Wasach G Sand
4503.5	4900.7	OHIO CREEK
4683.5	5100.5	Mesa Verde
5233.5	5710.9	Williams Fork
6303.5	6869.9	TOP GAS
7518.5	8066.5	COAL RIDGE
8168.5	8736.5	ROLLINS SS

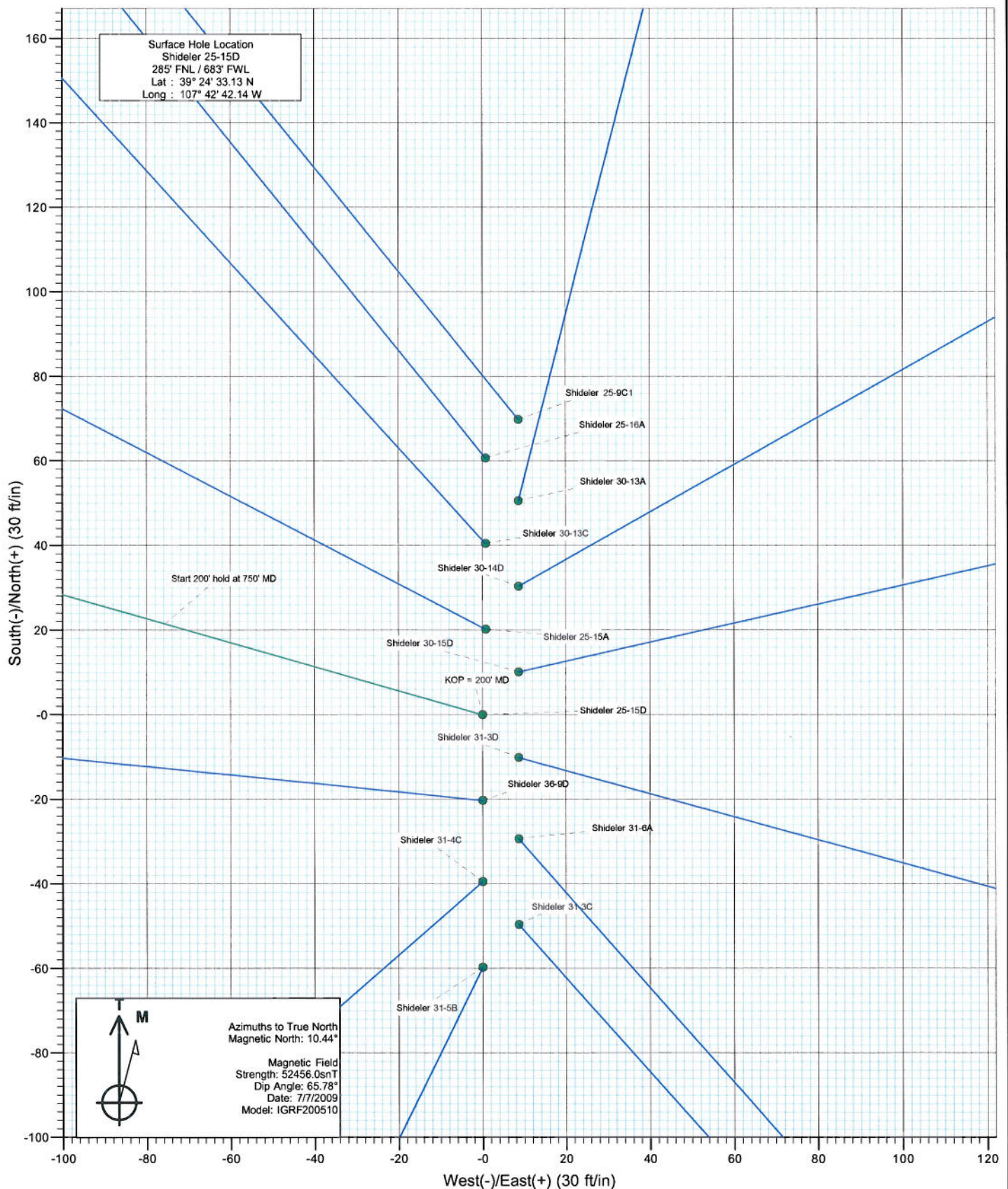


Azimuths to True North
 Magnetic North: 10.44°
 Magnetic Field
 Strength: 52456.0nT
 Dip Angle: 65.78°
 Date: 7/7/2009
 Model: IGRF200510

DESIGN DETAILS: Plan #1					
95xxx: KR KBE @ 6763.5ft (Original Well Elev)					
Target	Azimuth	Origin	Type	N/S	E/W
Shideler 25-15D BHL	285.84	Slot		0.0	0.0
				0.0	0.0



Project: Mamm Creek
Site: C31E Pad (NENW 31-7S-92W)
Well: Shideler 25-15D
Wellbore: DD
Design: Plan #1



Planning Report

Database:	US EDM 2003.21 Multi User Db			Local Co-ordinate Reference:	Well Shideler 25-15D		
Company:	EnCana Oil & Gas (USA) Inc			TVD Reference:	KBE @ 6763.5ft (Original Well Elev)		
Project:	Mamm Creek			MD Reference:	KBE @ 6763.5ft (Original Well Elev)		
Site:	C31E Pad (NENW 31-7S-92W)			North Reference:	True		
Well:	Shideler 25-15D			Survey Calculation Method:	Minimum Curvature		
Wellbore:	DD						
Design:	Plan #1						

Project	Mamm Creek						
Map System:	US State Plane 1983			System Datum:	Mean Sea Level		
Geo Datum:	North American Datum 1983						
Map Zone:	Colorado Central Zone						

Site	C31E Pad (NENW 31-7S-92W)						
Site Position:			Northing:	1,581,611.55 ft	Latitude:	39° 24' 33.82 N	
From:	Lat/Long		Easting:	2,375,162.79 ft	Longitude:	107° 42' 42.03 W	
Position Uncertainty:	0.0 ft		Slot Radius:	in	Grid Convergence:	-1.39 °	

Well	Shideler 25-15D						
Well Position	+N/-S	0.0 ft	Northing:	1,581,541.96 ft	Latitude:	39° 24' 33.13 N	
	+E/-W	0.0 ft	Easting:	2,375,152.45 ft	Longitude:	107° 42' 42.14 W	
Position Uncertainty	0.0 ft		Wellhead Elevation:	ft	Ground Level:	6,750.0 ft	

Wellbore	DD						
Magnetics	Model Name	Sample Date	Declination (°)	Dip Angle (°)	Field Strength (nT)		
	IGRF200510	7/7/2009	10.44	65.78	52,456		

Design	Plan #1						
Audit Notes:							
Version:	Phase:	PLAN	Tie On Depth:	0.0			
Vertical Section:	Depth From (TVD)	+N/-S	+E/-W	Direction			
	(ft)	(ft)	(ft)	(°)			
	0.0	0.0	0.0	285.84			

Plan Sections											
Measured Depth (ft)	Inclination (°)	Azimuth (°)	Vertical Depth (ft)	+N/-S (ft)	+E/-W (ft)	Dogleg Rate (°/100ft)	Build Rate (°/100ft)	Turn Rate (°/100ft)	TFO (°)	Target	
0.0	0.00	0.00	0.0	0.0	0.0	0.00	0.00	0.00	0.00		
200.0	0.00	0.00	200.0	0.0	0.0	0.00	0.00	0.00	0.00		
750.0	16.50	285.84	742.4	21.5	-75.7	3.00	3.00	0.00	285.84		
950.0	16.50	285.84	934.2	37.0	-130.3	0.00	0.00	0.00	0.00		
1,256.7	25.70	285.84	1,220.1	67.1	-236.4	3.00	3.00	0.00	0.01		
6,339.8	25.70	285.84	5,800.2	668.9	-2,357.2	0.00	0.00	0.00	0.00		
7,196.5	0.00	0.00	6,628.5	720.5	-2,538.9	3.00	-3.00	0.00	180.00	Shideler 25-15D ToG	
8,836.5	0.00	0.00	8,268.5	720.5	-2,538.9	0.00	0.00	0.00	0.00	Shideler 25-15D BHL	
8,936.5	0.00	0.00	8,368.5	720.5	-2,538.9	0.00	0.00	0.00	0.00		

Planning Report

Database: US EDM 2003.21 Multi User Db
 Company: EnCana Oil & Gas (USA) Inc
 Project: Mamm Creek
 Site: C31E Pad (NENW 31-7S-92W)
 Well: Shideler 25-15D
 Wellbore: DD
 Design: Plan #1

Local Co-ordinate Reference: Well Shideler 25-15D
 TVD Reference: KBE @ 6763.5ft (Original Well Elev)
 MD Reference: KBE @ 6763.5ft (Original Well Elev)
 North Reference: True
 Survey Calculation Method: Minimum Curvature

Planned Survey

Measured Depth (ft)	Inclination (°)	Azimuth (°)	Vertical Depth (ft)	+N/-S (ft)	+E/-W (ft)	Vertical Section (ft)	Dogleg Rate (°/100ft)	Build Rate (°/100ft)	Comments / Formations
0.0	0.00	0.00	0.0	0.0	0.0	0.0	0.00	0.00	
100.0	0.00	0.00	100.0	0.0	0.0	0.0	0.00	0.00	
200.0	0.00	0.00	200.0	0.0	0.0	0.0	0.00	0.00	KOP = 200' MD
300.0	3.00	285.84	300.0	0.7	-2.5	2.6	3.00	3.00	
400.0	6.00	285.84	399.6	2.9	-10.1	10.5	3.00	3.00	
500.0	9.00	285.84	498.8	6.4	-22.6	23.5	3.00	3.00	
600.0	12.00	285.84	597.1	11.4	-40.2	41.7	3.00	3.00	
700.0	15.00	285.84	694.3	17.8	-62.6	65.1	3.00	3.00	
750.0	16.50	285.84	742.4	21.5	-75.7	78.6	3.00	3.00	Start 200' hold at 750' MD
800.0	16.50	285.84	790.4	25.3	-89.3	92.8	0.00	0.00	
850.0	16.50	285.84	838.3	29.2	-103.0	107.1	0.00	0.00	Surface Casing
900.0	16.50	285.84	886.3	33.1	-116.6	121.3	0.00	0.00	
950.0	16.50	285.84	934.2	37.0	-130.3	135.5	0.00	0.00	End 200' hold at 950' MD
1,000.0	18.00	285.84	981.9	41.0	-144.6	150.3	3.00	3.00	
1,100.0	21.00	285.84	1,076.2	50.1	-176.7	183.7	3.00	3.00	
1,200.0	24.00	285.84	1,168.6	60.6	-213.5	221.9	3.00	3.00	
1,256.7	25.70	285.84	1,220.1	67.1	-236.4	245.8	3.00	3.00	EOB at Inc. = 25.70
1,300.0	25.70	285.84	1,259.0	72.2	-254.5	264.5	0.00	0.00	
1,400.0	25.70	285.84	1,349.1	84.0	-296.2	307.9	0.00	0.00	
1,500.0	25.70	285.84	1,439.3	95.9	-337.9	351.3	0.00	0.00	
1,600.0	25.70	285.84	1,529.4	107.7	-379.6	394.6	0.00	0.00	
1,700.0	25.70	285.84	1,619.5	119.6	-421.4	438.0	0.00	0.00	
1,800.0	25.70	285.84	1,709.6	131.4	-463.1	481.4	0.00	0.00	
1,900.0	25.70	285.84	1,799.7	143.2	-504.8	524.7	0.00	0.00	
2,000.0	25.70	285.84	1,889.8	155.1	-546.5	568.1	0.00	0.00	
2,100.0	25.70	285.84	1,979.9	166.9	-588.3	611.5	0.00	0.00	
2,200.0	25.70	285.84	2,070.0	178.8	-630.0	654.8	0.00	0.00	
2,300.0	25.70	285.84	2,160.1	190.6	-671.7	698.2	0.00	0.00	
2,400.0	25.70	285.84	2,250.2	202.4	-713.4	741.6	0.00	0.00	
2,414.8	25.70	285.84	2,263.5	204.2	-719.6	748.0	0.00	0.00	Wasach G Sand
2,500.0	25.70	285.84	2,340.3	214.3	-755.1	785.0	0.00	0.00	
2,600.0	25.70	285.84	2,430.4	226.1	-796.9	828.3	0.00	0.00	
2,700.0	25.70	285.84	2,520.5	238.0	-838.6	871.7	0.00	0.00	
2,800.0	25.70	285.84	2,610.6	249.8	-880.3	915.1	0.00	0.00	
2,900.0	25.70	285.84	2,700.7	261.6	-922.0	958.4	0.00	0.00	
3,000.0	25.70	285.84	2,790.8	273.5	-963.7	1,001.8	0.00	0.00	
3,100.0	25.70	285.84	2,880.9	285.3	-1,005.5	1,045.2	0.00	0.00	
3,200.0	25.70	285.84	2,971.1	297.2	-1,047.2	1,088.5	0.00	0.00	
3,300.0	25.70	285.84	3,061.2	309.0	-1,088.9	1,131.9	0.00	0.00	
3,400.0	25.70	285.84	3,151.3	320.8	-1,130.6	1,175.3	0.00	0.00	
3,500.0	25.70	285.84	3,241.4	332.7	-1,172.4	1,218.6	0.00	0.00	
3,600.0	25.70	285.84	3,331.5	344.5	-1,214.1	1,262.0	0.00	0.00	
3,700.0	25.70	285.84	3,421.6	356.4	-1,255.8	1,305.4	0.00	0.00	
3,800.0	25.70	285.84	3,511.7	368.2	-1,297.5	1,348.8	0.00	0.00	
3,900.0	25.70	285.84	3,601.8	380.0	-1,339.2	1,392.1	0.00	0.00	
4,000.0	25.70	285.84	3,691.9	391.9	-1,381.0	1,435.5	0.00	0.00	
4,100.0	25.70	285.84	3,782.0	403.7	-1,422.7	1,478.9	0.00	0.00	
4,200.0	25.70	285.84	3,872.1	415.6	-1,464.4	1,522.2	0.00	0.00	
4,300.0	25.70	285.84	3,962.2	427.4	-1,506.1	1,565.6	0.00	0.00	
4,400.0	25.70	285.84	4,052.3	439.2	-1,547.8	1,609.0	0.00	0.00	
4,500.0	25.70	285.84	4,142.4	451.1	-1,589.6	1,652.3	0.00	0.00	
4,600.0	25.70	285.84	4,232.5	462.9	-1,631.3	1,695.7	0.00	0.00	

Planning Report

Database: US EDM 2003.21 Multi User Db
Company: EnCana Oil & Gas (USA) Inc
Project: Mamm Creek
Site: C31E Pad (NENW 31-7S-92W)
Well: Shideler 25-15D
Wellbore: DD
Design: Plan #1

Local Co-ordinate Reference: Well Shideler 25-15D
TVD Reference: KBE @ 6763.5ft (Original Well Elev)
MD Reference: KBE @ 6763.5ft (Original Well Elev)
North Reference: True
Survey Calculation Method: Minimum Curvature

Planned Survey

Measured Depth (ft)	Inclination (°)	Azimuth (°)	Vertical Depth (ft)	+N/-S (ft)	+E/-W (ft)	Vertical Section (ft)	Dogleg Rate (°/100ft)	Build Rate (°/100ft)	Comments / Formations
4,700.0	25.70	285.84	4,322.6	474.8	-1,673.0	1,739.1	0.00	0.00	
4,800.0	25.70	285.84	4,412.8	486.6	-1,714.7	1,782.4	0.00	0.00	
4,900.0	25.70	285.84	4,502.9	498.4	-1,756.5	1,825.8	0.00	0.00	
4,900.7	25.70	285.84	4,503.5	498.5	-1,756.8	1,826.1	0.00	0.00	OHIO CREEK
5,000.0	25.70	285.84	4,593.0	510.3	-1,798.2	1,869.2	0.00	0.00	
5,100.0	25.70	285.84	4,683.1	522.1	-1,839.9	1,912.6	0.00	0.00	
5,100.5	25.70	285.84	4,683.5	522.2	-1,840.1	1,912.8	0.00	0.00	Mesa Verde
5,200.0	25.70	285.84	4,773.2	534.0	-1,881.6	1,955.9	0.00	0.00	
5,300.0	25.70	285.84	4,863.3	545.8	-1,923.3	1,999.3	0.00	0.00	
5,400.0	25.70	285.84	4,953.4	557.6	-1,965.1	2,042.7	0.00	0.00	
5,500.0	25.70	285.84	5,043.5	569.5	-2,006.8	2,086.0	0.00	0.00	
5,600.0	25.70	285.84	5,133.6	581.3	-2,048.5	2,129.4	0.00	0.00	
5,700.0	25.70	285.84	5,223.7	593.2	-2,090.2	2,172.8	0.00	0.00	
5,710.9	25.70	285.84	5,233.5	594.5	-2,094.8	2,177.5	0.00	0.00	Williams Fork
5,800.0	25.70	285.84	5,313.8	605.0	-2,132.0	2,216.1	0.00	0.00	
5,900.0	25.70	285.84	5,403.9	616.8	-2,173.7	2,259.5	0.00	0.00	
6,000.0	25.70	285.84	5,494.0	628.7	-2,215.4	2,302.9	0.00	0.00	
6,100.0	25.70	285.84	5,584.1	640.5	-2,257.1	2,346.2	0.00	0.00	
6,200.0	25.70	285.84	5,674.2	652.4	-2,298.8	2,389.6	0.00	0.00	
6,300.0	25.70	285.84	5,764.3	664.2	-2,340.6	2,433.0	0.00	0.00	
6,339.8	25.70	285.84	5,800.2	668.9	-2,357.2	2,450.2	0.00	0.00	Start Drop -3.00
6,400.0	23.90	285.84	5,854.9	675.8	-2,381.5	2,475.5	3.00	-3.00	
6,500.0	20.90	285.84	5,947.3	686.2	-2,418.1	2,513.6	3.00	-3.00	
6,600.0	17.90	285.84	6,041.6	695.3	-2,450.0	2,546.8	3.00	-3.00	
6,700.0	14.90	285.84	6,137.5	703.0	-2,477.2	2,575.0	3.00	-3.00	
6,800.0	11.90	285.84	6,234.8	709.3	-2,499.5	2,598.2	3.00	-3.00	
6,869.9	9.80	285.84	6,303.5	712.9	-2,512.1	2,611.3	3.00	-3.00	TOP GAS
6,900.0	8.90	285.84	6,333.2	714.2	-2,516.8	2,616.2	3.00	-3.00	
7,000.0	5.90	285.84	6,432.3	717.7	-2,529.2	2,629.1	3.00	-3.00	
7,100.0	2.90	285.84	6,532.0	719.8	-2,536.6	2,636.8	3.00	-3.00	
7,196.5	0.00	0.00	6,628.5	720.5	-2,538.9	2,639.2	3.00	-3.00	EOD at Inc. = 0° - Shideler 25-15D ToG
7,200.0	0.00	0.00	6,632.0	720.5	-2,538.9	2,639.2	0.00	0.00	
7,300.0	0.00	0.00	6,732.0	720.5	-2,538.9	2,639.2	0.00	0.00	
7,400.0	0.00	0.00	6,832.0	720.5	-2,538.9	2,639.2	0.00	0.00	
7,500.0	0.00	0.00	6,932.0	720.5	-2,538.9	2,639.2	0.00	0.00	
7,600.0	0.00	0.00	7,032.0	720.5	-2,538.9	2,639.2	0.00	0.00	
7,700.0	0.00	0.00	7,132.0	720.5	-2,538.9	2,639.2	0.00	0.00	
7,800.0	0.00	0.00	7,232.0	720.5	-2,538.9	2,639.2	0.00	0.00	
7,900.0	0.00	0.00	7,332.0	720.5	-2,538.9	2,639.2	0.00	0.00	
8,000.0	0.00	0.00	7,432.0	720.5	-2,538.9	2,639.2	0.00	0.00	
8,086.5	0.00	0.00	7,518.5	720.5	-2,538.9	2,639.2	0.00	0.00	COAL RIDGE
8,100.0	0.00	0.00	7,532.0	720.5	-2,538.9	2,639.2	0.00	0.00	
8,200.0	0.00	0.00	7,632.0	720.5	-2,538.9	2,639.2	0.00	0.00	
8,300.0	0.00	0.00	7,732.0	720.5	-2,538.9	2,639.2	0.00	0.00	
8,400.0	0.00	0.00	7,832.0	720.5	-2,538.9	2,639.2	0.00	0.00	
8,500.0	0.00	0.00	7,932.0	720.5	-2,538.9	2,639.2	0.00	0.00	
8,600.0	0.00	0.00	8,032.0	720.5	-2,538.9	2,639.2	0.00	0.00	
8,700.0	0.00	0.00	8,132.0	720.5	-2,538.9	2,639.2	0.00	0.00	
8,736.5	0.00	0.00	8,168.5	720.5	-2,538.9	2,639.2	0.00	0.00	ROLLINS SS
8,800.0	0.00	0.00	8,232.0	720.5	-2,538.9	2,639.2	0.00	0.00	
8,836.5	0.00	0.00	8,268.5	720.5	-2,538.9	2,639.2	0.00	0.00	TD at 8836.5' MD - Shideler 25-15D BHL
8,900.0	0.00	0.00	8,332.0	720.5	-2,538.9	2,639.2	0.00	0.00	

Planning Report

Database:	US EDM 2003.21 Multi User Db	Local Co-ordinate Reference:	Well Shideler 25-15D
Company:	EnCana Oil & Gas (USA) Inc	TVD Reference:	KBE @ 6763.5ft (Original Well Elev)
Project:	Mamm Creek	MD Reference:	KBE @ 6763.5ft (Original Well Elev)
Site:	C31E Pad (NENW 31-7S-92W)	North Reference:	True
Well:	Shideler 25-15D	Survey Calculation Method:	Minimum Curvature
Wellbore:	DD		
Design:	Plan #1		

Planned Survey

Measured Depth (ft)	Inclination (°)	Azimuth (°)	Vertical Depth (ft)	+N/-S (ft)	+E/-W (ft)	Vertical Section (ft)	Dogleg Rate (°/100ft)	Build Rate (°/100ft)	Comments / Formations
8,936.5	0.00	0.00	8,368.5	720.5	-2,538.9	2,639.2	0.00	0.00	Permit TD at 8936.5' MD

Targets

Target Name	Dip Angle (°)	Dip Dir. (°)	TVD (ft)	+N/-S (ft)	+E/-W (ft)	Northing (ft)	Easting (ft)	Latitude	Longitude
- hit/miss target									
- Shape									
Shideler 25-15D BHL	0.00	0.00	8,268.5	720.5	-2,538.9	1,582,324.06	2,372,631.80	39° 24' 40.25 N	107° 43' 14.49 W
- plan hits target center									
- Circle (radius 25.0)									
Shideler 25-15D ToG	0.00	0.00	6,628.5	720.5	-2,538.9	1,582,324.06	2,372,631.80	39° 24' 40.25 N	107° 43' 14.49 W
- plan hits target center									
- Point									

Casing Points

Measured Depth (ft)	Vertical Depth (ft)	Name	Casing Diameter (in)	Hole Diameter (in)
850.0	838.3	Surface Casing	5.500	6.000

Formations

Measured Depth (ft)	Vertical Depth (ft)	Name	Lithology	Dip (°)	Dip Direction (°)
2,414.8	2,263.5	Wasach G Sand			
4,900.7	4,503.5	OHIO CREEK			
5,100.5	4,683.5	Mesa Verde			
5,710.9	5,233.5	Williams Fork			
6,869.9	6,303.5	TOP GAS			
8,086.5	7,518.5	COAL RIDGE			
8,736.5	8,168.5	ROLLINS SS			

Plan Annotations

Measured Depth (ft)	Vertical Depth (ft)	Local Coordinates		Comment
		+N/-S (ft)	+E/-W (ft)	
200.0	200.0	0.0	0.0	KOP = 200' MD
750.0	742.4	21.5	-75.7	Start 200' hold at 750' MD
950.0	934.2	37.0	-130.3	End 200' hold at 950' MD
1,256.7	1,220.1	67.1	-236.4	EOB at Inc. = 25.70
6,339.8	5,800.2	668.9	-2,357.2	Start Drop -3.00
7,196.5	6,628.5	720.5	-2,538.9	EOD at Inc. = 0°
8,836.5	8,268.5	720.5	-2,538.9	TD at 8836.5' MD
8,936.5	8,368.5	720.5	-2,538.9	Permit TD at 8936.5' MD