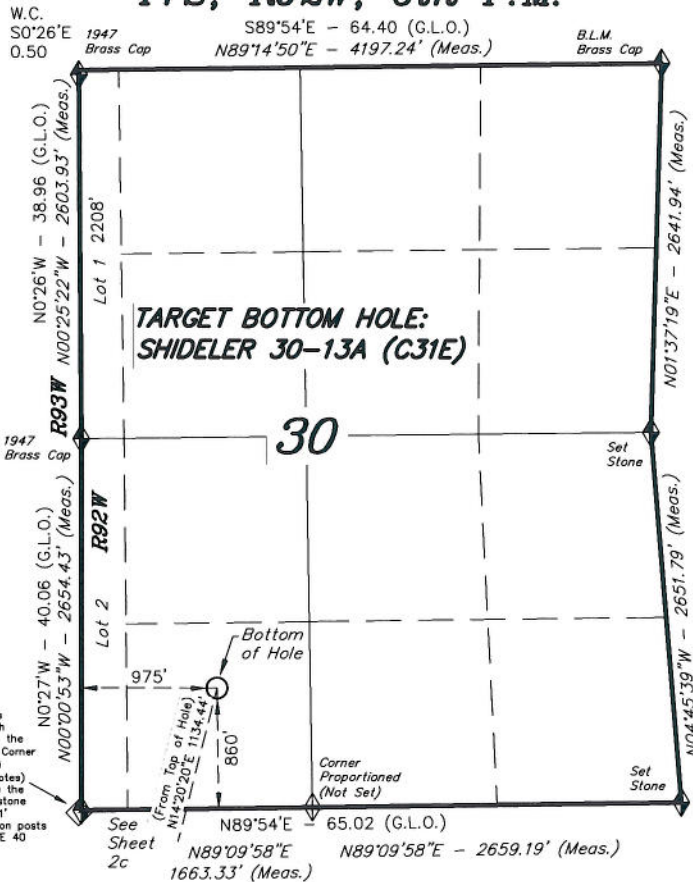


T7S, R92W, 6th P.M.



Found a 1947 B.L.M. Brass Cap reference Marker which bears S45°W 40 links from the True Corner. (The Section Corner is also AP 1 for Tract 69) (Taken from B.L.M. field notes) - The field notes describe the Section corner as a lava stone 18x14x6 marked X buried 1' underground from which iron posts with brass caps bear N45°E 40 links and S45°W 40 links.

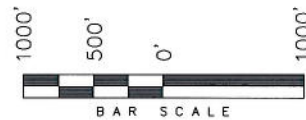
◆ = SECTION CORNERS LOCATED

Basis of elevation is the Rifle 2 Triangulation Station. 39°31'53.80" N Lat. & 107°47'07.78" W Long. (NAD 83). Elevation = 5323.1' (NAVD88).

IMPROVEMENT NOTE:
See addendum to legal plat (sheet 2o) for visible improvements within 400' of the proposed well head.

ENCANA OIL & GAS (USA) INC

TARGET BOTTOM HOLE, SHIDELER 30-13A (C31E), LOCATED AS SHOWN IN THE SE 1/4 SW 1/4 OF SECTION 30, T7S, R92W, 6th P.M. GARFIELD COUNTY, COLORADO.



NOTES:

1. Well footages are measured at right angles to the Section Lines.
2. Bearings are based on Global Positioning Satellite observations.

THIS IS TO CERTIFY THAT THE ABOVE PLAT WAS PREPARED FROM FIELD NOTES OF SURVEYS MADE BY ME OR UNDER MY SUPERVISION. THE LOCATION HAS BEEN STAKED ON THE GROUND AS SHOWN ON THE PLAT, AND THAT THE SAME ARE TRUE AND CORRECT TO THE BEST OF MY KNOWLEDGE AND BELIEF.

[Signature] # 30125
REGISTERED LAND SURVEYOR
REGISTRATION NO. 30125
STATE OF COLORADO

TRI STATE LAND SURVEYING & CONSULTING

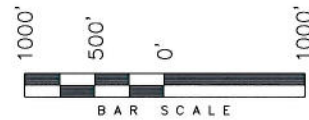
180 NORTH VERNAL AVE. - VERNAL, UTAH 84078
(435) 781-2501

DATE SURVEYED: 05-13-09	SURVEYED BY: C.D.S.	SHEET 2cc OF 11
DATE DRAWN: 06-08-09	DRAWN BY: F.T.M.	
REVISED:	SCALE: 1" = 1000'	

T7S, R92W, 6th P.M.

ENCANA OIL & GAS (USA) INC

WELL LOCATION, SHIDELER 30-13A (C31E), LOCATED AS SHOWN IN THE NE 1/4 NW 1/4 OF SECTION 31, T7S, R92W, 6th P.M. GARFIELD COUNTY, COLORADO.



NOTES:

1. Well footages are measured at right angles to the Section Lines.
2. Bearings are based on Global Positioning Satellite observations.
3. G.P.S. Operator: C.D. SLAUGH, (PDOP) = 2.4

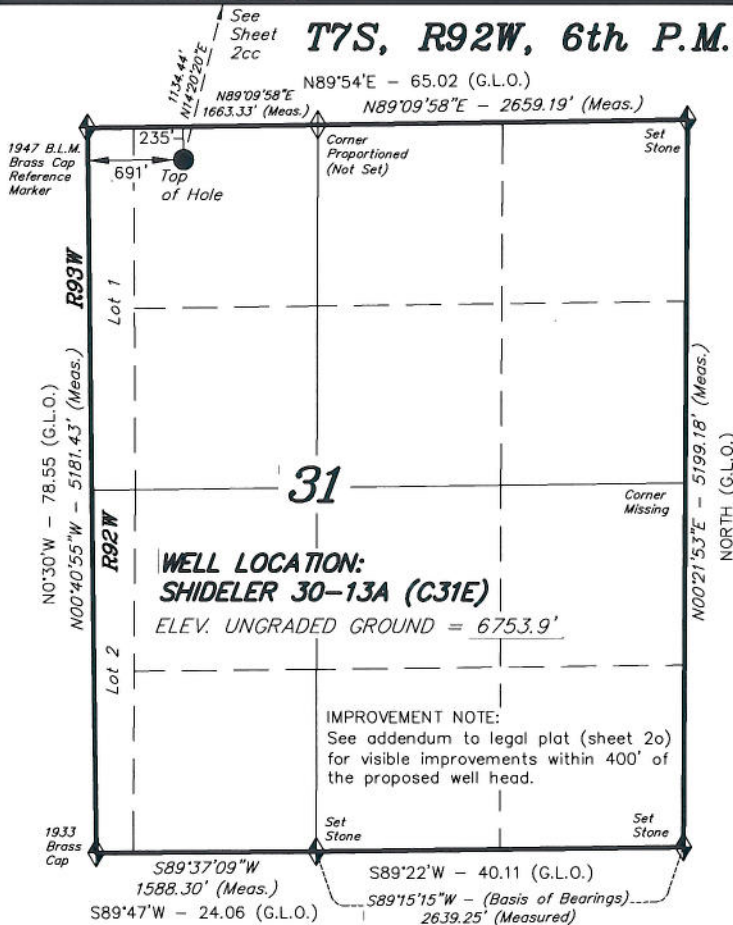
THIS IS TO CERTIFY THAT THE ABOVE PLAT WAS PREPARED FROM FIELD NOTES OF SURVEYS MADE BY ME OR UNDER MY SUPERVISION. THE LOCATION HAS BEEN STAKED ON THE GROUND AS SHOWN ON THE PLAT, AND THAT THE SAME ARE TRUE AND CORRECT TO THE BEST OF MY KNOWLEDGE AND BELIEF.

[Signature] # 30125
REGISTERED LAND SURVEYOR
REGISTRATION NO. 30125
STATE OF COLORADO

TRI STATE LAND SURVEYING & CONSULTING

180 NORTH VERNAL AVE. - VERNAL, UTAH 84078
(435) 781-2501

DATE SURVEYED: 05-13-09	SURVEYED BY: C.D.S.	SHEET 2c OF 11
DATE DRAWN: 06-08-09	DRAWN BY: F.T.M.	
REVISED:	SCALE: 1" = 1000'	



◆ = SECTION CORNERS LOCATED

Basis of elevation is the Rifle 2 Triangulation Station, 39°31'53.80" N Lat. & 107°47'07.78" W Long. (NAD 83). Elevation = 5323.1' (NAVD88).

NAD 83 (SURFACE LOCATION)	
LATITUDE	= 39°24'33.63" (39.409342)
LONGITUDE	= 107°42'42.03" (107.711675)