

ANADARKO PETROLEUM



Location: COLORADO Slot: SLOT#04 GARCIA 29-25 (1234'FNL & 1335'FWL)
Field: WELD COUNTY (ANADARKO) Well: GARCIA 29-25
Facility: SEC.25-T4N-R67W Wellbore: GARCIA 29-25 PWB

Well Profile Data

Design Comment	MD (ft)	Inc (°)	Az (°)	TVD (ft)	Local N (ft)	Local E (ft)	DLS (°/100ft)	VS (ft)
Tie On	15.00	0.000	359.182	15.00	0.00	0.00	0.00	0.00
End of Tangent	850.00	0.000	359.182	850.00	0.00	0.00	0.00	0.00
End of Build (S)	1600.00	15.000	359.182	1591.46	97.61	-1.39	2.00	97.62
End of Tangent (S)	5378.51	15.000	359.182	5241.22	1075.46	-15.35	0.00	1075.57
End of Drop (S)	6128.51	0.000	359.182	5982.69	1173.06	-16.74	2.00	1173.18
End of Tangent	7930.83	0.000	359.182	7785.00	1173.06	-16.74	0.00	1173.18

Location Information

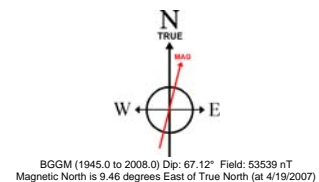
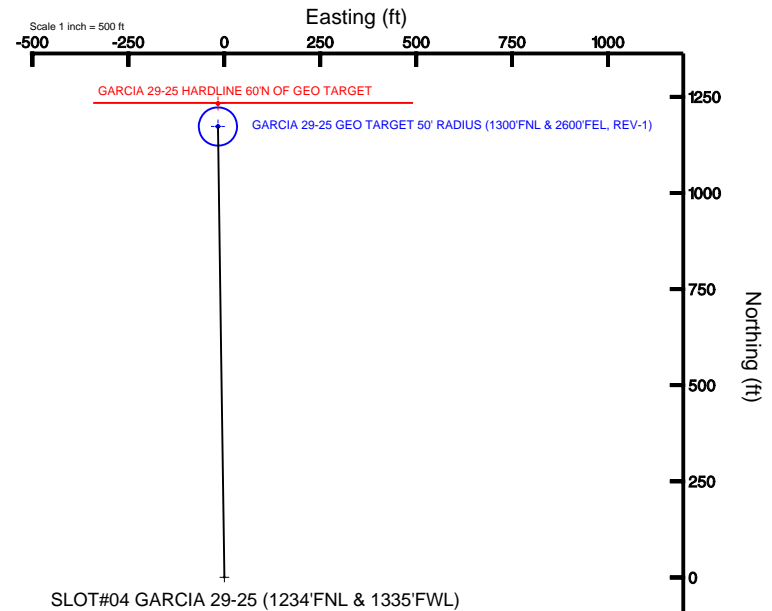
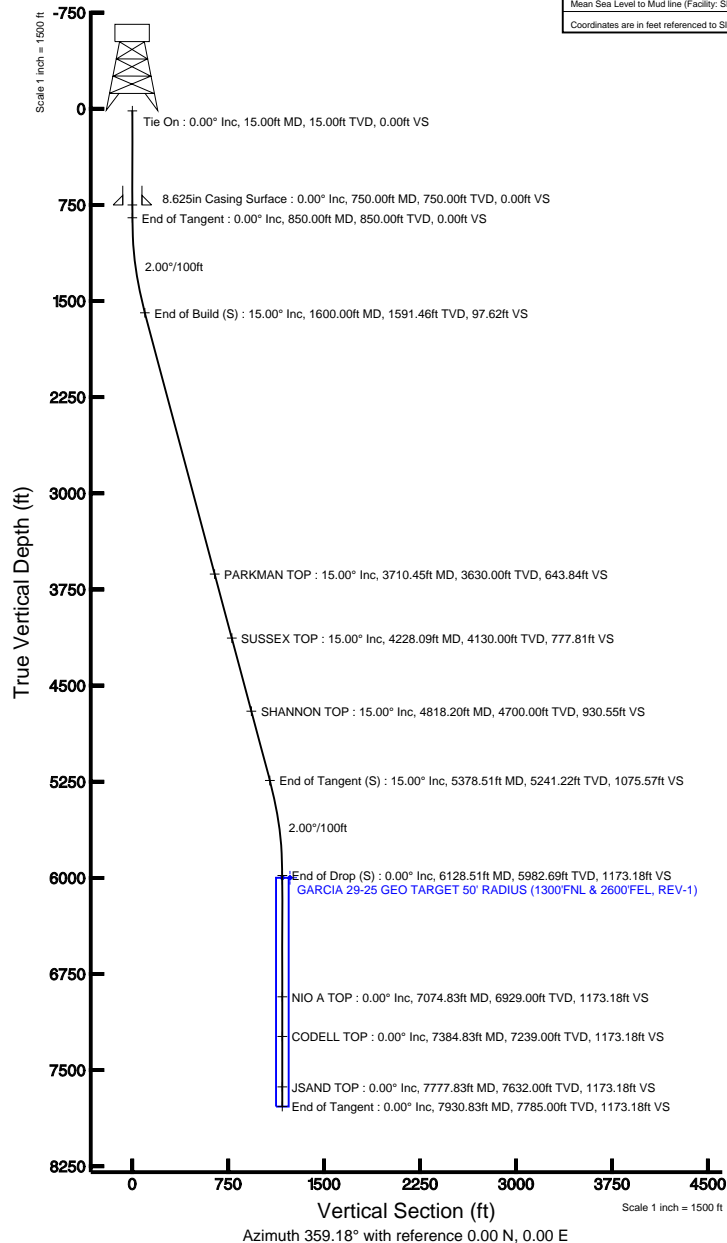
Facility Name				Grid East (USft)	Grid North (USft)	Latitude	Longitude
SEC.25-T4N-R67W				3184802.670	1344661.200	40°16'39.360"N	104°50'15.540"W
Slot	Local N (ft)	Local E (ft)	Grid East (USft)	Grid North (USft)	Latitude	Longitude	
SLOT#04 GARCIA 29-25 (1234'FNL & 1335'FWL)	3329.81	-1735.30	3183042.623	1347977.804	40°17'12.264"N	104°50'37.932"W	
Rig on SLOT#04 GARCIA 29-25 (1234'FNL & 1335'FWL) (RT) to Mud line (Facility: SEC.25-T4N-R67W)						4742ft	
Mean Sea Level to Mud line (Facility: SEC.25-T4N-R67W)						0ft	
Rig on SLOT#04 GARCIA 29-25 (1234'FNL & 1335'FWL) (RT) to Mean Sea Level						4742ft	

Targets

Name	MD (ft)	TVD (ft)	Local N (ft)	Local E (ft)	Grid East (USft)	Grid North (USft)	Latitude	Longitude
GARCIA 29-25 GEO TARGET 50' RADIUS (1300'FNL & 2600'FEL, REV-1)	6000.00	1173.06	-16.74	3183017.21	1349150.66	40°17'23.856"N	104°50'38.148"W	
GARCIA 29-25 HARDLINE 60N OF GEO TARGET	6000.00	1233.06	-16.74	3183016.76	1348210.65	40°17'24.448"N	104°50'38.148"W	

Plot reference wellpath is GARCIA 29-25 (REV-A.0) PWP

True vertical depths are referenced to Rig on SLOT#04 GARCIA 29-25 (1234'FNL & 1335'FWL) (RT)	Grid System: NAD83 / Lambert Colorado State Planes, Northern Zone (501), US feet
Measured depths are referenced to Rig on SLOT#04 GARCIA 29-25 (1234'FNL & 1335'FWL) (RT)	North Reference: True north
Rig on SLOT#04 GARCIA 29-25 (1234'FNL & 1335'FWL) (RT) to Mean Sea Level: 4742 feet	Scale: True distance
Mean Sea Level to Mud line (Facility: SEC.25-T4N-R67W): 0 feet	Depths are in feet
Coordinates are in feet referenced to Slot	Created by: cookdanm on 8/17/2009



To correct azimuth from Magnetic to True add 9.46 degrees
For example: if the Magnetic North Azimuth = 90 degs, then the Grid North Azimuth = 90 + 9.46 = 99.46

Planned Wellpath Report

GARCIA 29-25 (REV-A.0) PWP

Page 1 of 5

INTEQ

REFERENCE WELLPATH IDENTIFICATION

Operator	ANADARKO PETROLEUM	Slot	SLOT#04 GARCIA 29-25 (1234'FNL & 1335'FWL)
Area	COLORADO	Well	GARCIA 29-25
Field	WELD COUNTY (ANADARKO)	Wellbore	GARCIA 29-25 PWB
Facility	SEC.25-T4N-R67W		

REPORT SETUP INFORMATION

Projection System	NAD83 / Lambert Colorado State Planes, Northern Zone (501), US feet	Software System	WellArchitect® 2.0
North Reference	True	User	Cookdanm
Scale	0.999957	Report Generated	8/17/2009 at 12:56:46 PM
Convergence at slot	0.42° East	Database/Source file	WellArchitect_Denver/GARCIA_29-25_PWB.xml

WELLPATH LOCATION

	Local coordinates		Grid coordinates		Geographic coordinates	
	North[ft]	East[ft]	Easting[USft]	Northing[USft]	Latitude	Longitude
Slot Location	3329.81	-1735.30	3183042.62	1347977.80	40°17'12.264"N	104°50'37.932"W
Facility Reference Pt			3184802.67	1344661.20	40°16'39.360"N	104°50'15.540"W
Field Reference Pt			3197771.84	1268891.29	40°04'09.600"N	104°47'36.000"W

WELLPATH DATUM

Calculation method	Minimum curvature	Rig on SLOT#04 GARCIA 29-25 (1234'FNL & 1335'FWL) (RT) to Facility Vertical Datum	4
Horizontal Reference Pt	Slot	Rig on SLOT#04 GARCIA 29-25 (1234'FNL & 1335'FWL) (RT) to Mean Sea Level	4
Vertical Reference Pt	Rig on SLOT#04 GARCIA 29-25 (1234'FNL & 1335'FWL) (RT)	Facility Vertical Datum to Mud Line (Facility)	0
MD Reference Pt	Rig on SLOT#04 GARCIA 29-25 (1234'FNL & 1335'FWL) (RT)	Section Origin	7
Field Vertical Reference	Mean Sea Level	Section Azimuth	3

Planned Wellpath Report

GARCIA 29-25 (REV-A.0) PWP

Page 2 of 5

INTEQ

REFERENCE WELLPATH IDENTIFICATION

Operator	ANADARKO PETROLEUM	Slot	SLOT#04 GARCIA 29-25 (1234'FNL & 1335'FWL)
Area	COLORADO	Well	GARCIA 29-25
Field	WELD COUNTY (ANADARKO)	Wellbore	GARCIA 29-25 PWB
Facility	SEC.25-T4N-R67W		

WELLPATH DATA (92 stations) † = interpolated/extrapolated station

MD [ft]	Inclination [°]	Azimuth [°]	TVD [ft]	Vert Sect [ft]	North [ft]	East [ft]	DLS [°/100ft]	Comments
0.00†	0.000	359.182	0.00	0.00	0.00	0.00	0.00	
15.00	0.000	359.182	15.00	0.00	0.00	0.00	0.00	Tie On
115.00†	0.000	359.182	115.00	0.00	0.00	0.00	0.00	
215.00†	0.000	359.182	215.00	0.00	0.00	0.00	0.00	
315.00†	0.000	359.182	315.00	0.00	0.00	0.00	0.00	
415.00†	0.000	359.182	415.00	0.00	0.00	0.00	0.00	
515.00†	0.000	359.182	515.00	0.00	0.00	0.00	0.00	
615.00†	0.000	359.182	615.00	0.00	0.00	0.00	0.00	
715.00†	0.000	359.182	715.00	0.00	0.00	0.00	0.00	
815.00†	0.000	359.182	815.00	0.00	0.00	0.00	0.00	
850.00	0.000	359.182	850.00	0.00	0.00	0.00	0.00	End of Tangent
915.00†	1.300	359.182	914.99	0.74	0.74	-0.01	2.00	
1015.00†	3.300	359.182	1014.91	4.75	4.75	-0.07	2.00	
1115.00†	5.300	359.182	1114.62	12.25	12.25	-0.17	2.00	
1215.00†	7.300	359.182	1214.01	23.22	23.22	-0.33	2.00	
1315.00†	9.300	359.182	1312.96	37.66	37.65	-0.54	2.00	
1415.00†	11.300	359.182	1411.34	55.53	55.53	-0.79	2.00	
1515.00†	13.300	359.182	1509.04	76.84	76.83	-1.10	2.00	
1600.00	15.000	359.182	1591.46	97.62	97.61	-1.39	2.00	End of Build (S)
1615.00†	15.000	359.182	1605.95	101.50	101.49	-1.45	0.00	
1715.00†	15.000	359.182	1702.54	127.38	127.37	-1.82	0.00	
1815.00†	15.000	359.182	1799.14	153.26	153.25	-2.19	0.00	
1915.00†	15.000	359.182	1895.73	179.14	179.13	-2.56	0.00	
2015.00†	15.000	359.182	1992.32	205.03	205.00	-2.93	0.00	
2115.00†	15.000	359.182	2088.91	230.91	230.88	-3.29	0.00	
2215.00†	15.000	359.182	2185.51	256.79	256.76	-3.66	0.00	
2315.00†	15.000	359.182	2282.10	282.67	282.64	-4.03	0.00	
2415.00†	15.000	359.182	2378.69	308.55	308.52	-4.40	0.00	
2515.00†	15.000	359.182	2475.28	334.43	334.40	-4.77	0.00	
2615.00†	15.000	359.182	2571.88	360.32	360.28	-5.14	0.00	
2715.00†	15.000	359.182	2668.47	386.20	386.16	-5.51	0.00	
2815.00†	15.000	359.182	2765.06	412.08	412.04	-5.88	0.00	
2915.00†	15.000	359.182	2861.65	437.96	437.92	-6.25	0.00	
3015.00†	15.000	359.182	2958.25	463.84	463.80	-6.62	0.00	
3115.00†	15.000	359.182	3054.84	489.73	489.68	-6.99	0.00	
3215.00†	15.000	359.182	3151.43	515.61	515.56	-7.36	0.00	
3315.00†	15.000	359.182	3248.02	541.49	541.43	-7.73	0.00	
3415.00†	15.000	359.182	3344.62	567.37	567.31	-8.10	0.00	
3515.00†	15.000	359.182	3441.21	593.25	593.19	-8.46	0.00	
3615.00†	15.000	359.182	3537.80	619.14	619.07	-8.83	0.00	
3710.45†	15.000	359.182	3630.00	643.84	643.77	-9.19	0.00	PARKMAN TOP
3715.00†	15.000	359.182	3634.40	645.02	644.95	-9.20	0.00	
3815.00†	15.000	359.182	3730.99	670.90	670.83	-9.57	0.00	
3915.00†	15.000	359.182	3827.58	696.78	696.71	-9.94	0.00	
4015.00†	15.000	359.182	3924.17	722.66	722.59	-10.31	0.00	

Planned Wellpath Report

GARCIA 29-25 (REV-A.0) PWP

Page 3 of 5

INTEQ

REFERENCE WELLPATH IDENTIFICATION

Operator	ANADARKO PETROLEUM	Slot	SLOT#04 GARCIA 29-25 (1234'FNL & 1335'FWL)
Area	COLORADO	Well	GARCIA 29-25
Field	WELD COUNTY (ANADARKO)	Wellbore	GARCIA 29-25 PWB
Facility	SEC.25-T4N-R67W		

WELLPATH DATA (92 stations) † = interpolated/extrapolated station

MD [ft]	Inclination [°]	Azimuth [°]	TVD [ft]	Vert Sect [ft]	North [ft]	East [ft]	DLS [°/100ft]	Comments
4115.00†	15.000	359.182	4020.77	748.55	748.47	-10.68	0.00	
4215.00†	15.000	359.182	4117.36	774.43	774.35	-11.05	0.00	
4228.09†	15.000	359.182	4130.00	777.81	777.74	-11.10	0.00	SUSSEX TOP
4315.00†	15.000	359.182	4213.95	800.31	800.23	-11.42	0.00	
4415.00†	15.000	359.182	4310.54	826.19	826.11	-11.79	0.00	
4515.00†	15.000	359.182	4407.14	852.07	851.99	-12.16	0.00	
4615.00†	15.000	359.182	4503.73	877.95	877.87	-12.53	0.00	
4715.00†	15.000	359.182	4600.32	903.84	903.74	-12.90	0.00	
4815.00†	15.000	359.182	4696.91	929.72	929.62	-13.26	0.00	
4818.20†	15.000	359.182	4700.00	930.55	930.45	-13.28	0.00	SHANNON TOP
4915.00†	15.000	359.182	4793.51	955.60	955.50	-13.63	0.00	
5015.00†	15.000	359.182	4890.10	981.48	981.38	-14.00	0.00	
5115.00†	15.000	359.182	4986.69	1007.36	1007.26	-14.37	0.00	
5215.00†	15.000	359.182	5083.28	1033.25	1033.14	-14.74	0.00	
5315.00†	15.000	359.182	5179.88	1059.13	1059.02	-15.11	0.00	
5378.51	15.000	359.182	5241.22	1075.57	1075.46	-15.35	0.00	End of Tangent (S)
5415.00†	14.270	359.182	5276.53	1084.79	1084.67	-15.48	2.00	
5515.00†	12.270	359.182	5373.85	1107.74	1107.63	-15.80	2.00	
5615.00†	10.270	359.182	5471.92	1127.28	1127.17	-16.08	2.00	
5715.00†	8.270	359.182	5570.61	1143.39	1143.27	-16.31	2.00	
5815.00†	6.270	359.182	5669.80	1156.04	1155.93	-16.49	2.00	
5915.00†	4.270	359.182	5769.37	1165.23	1165.11	-16.63	2.00	
6015.00†	2.270	359.182	5869.20	1170.93	1170.81	-16.71	2.00	
6115.00†	0.270	359.182	5969.17	1173.15	1173.03	-16.74	2.00	
6128.51	0.000	359.182	5982.69 ¹	1173.18	1173.06	-16.74	2.00	End of Drop (S)
6215.00†	0.000	359.182	6069.17	1173.18	1173.06	-16.74	0.00	
6315.00†	0.000	359.182	6169.17	1173.18	1173.06	-16.74	0.00	
6415.00†	0.000	359.182	6269.17	1173.18	1173.06	-16.74	0.00	
6515.00†	0.000	359.182	6369.17	1173.18	1173.06	-16.74	0.00	
6615.00†	0.000	359.182	6469.17	1173.18	1173.06	-16.74	0.00	
6715.00†	0.000	359.182	6569.17	1173.18	1173.06	-16.74	0.00	
6815.00†	0.000	359.182	6669.17	1173.18	1173.06	-16.74	0.00	
6915.00†	0.000	359.182	6769.17	1173.18	1173.06	-16.74	0.00	
7015.00†	0.000	359.182	6869.17	1173.18	1173.06	-16.74	0.00	
7074.83†	0.000	359.182	6929.00	1173.18	1173.06	-16.74	0.00	NIO A TOP
7115.00†	0.000	359.182	6969.17	1173.18	1173.06	-16.74	0.00	
7215.00†	0.000	359.182	7069.17	1173.18	1173.06	-16.74	0.00	
7315.00†	0.000	359.182	7169.17	1173.18	1173.06	-16.74	0.00	
7384.83†	0.000	359.182	7239.00	1173.18	1173.06	-16.74	0.00	CODELL TOP
7415.00†	0.000	359.182	7269.17	1173.18	1173.06	-16.74	0.00	
7515.00†	0.000	359.182	7369.17	1173.18	1173.06	-16.74	0.00	
7615.00†	0.000	359.182	7469.17	1173.18	1173.06	-16.74	0.00	
7715.00†	0.000	359.182	7569.17	1173.18	1173.06	-16.74	0.00	
7777.83†	0.000	359.182	7632.00	1173.18	1173.06	-16.74	0.00	JSAND TOP
7815.00†	0.000	359.182	7669.17	1173.18	1173.06	-16.74	0.00	

Planned Wellpath Report

GARCIA 29-25 (REV-A.0) PWP

Page 4 of 5

INTEQ

REFERENCE WELLPATH IDENTIFICATION

Operator	ANADARKO PETROLEUM	Slot	SLOT#04 GARCIA 29-25 (1234'FNL & 1335'FWL)
Area	COLORADO	Well	GARCIA 29-25
Field	WELD COUNTY (ANADARKO)	Wellbore	GARCIA 29-25 PWB
Facility	SEC.25-T4N-R67W		

WELLPATH DATA (92 stations) † = interpolated/extrapolated station

MD [ft]	Inclination [°]	Azimuth [°]	TVD [ft]	Vert Sect [ft]	North [ft]	East [ft]	DLS [°/100ft]	Comments
7915.00†	0.000	359.182	7769.17	1173.18	1173.06	-16.74	0.00	
7930.83	0.000	359.182	7785.00	1173.18	1173.06	-16.74	0.00	End of Tangent

HOLE & CASING SECTIONS Ref Wellbore: GARCIA 29-25 PWB Ref Wellpath: GARCIA 29-25 (REV-A.0) PWP

String/Diameter	Start MD [ft]	End MD [ft]	Interval [ft]	Start TVD [ft]	End TVD [ft]	Start N/S [ft]	Start E/W [ft]	End N/S [ft]	End E/W [ft]
12.25in Open Hole	15.00	750.00	735.00	15.00	750.00	0.00	0.00	0.00	0.00
8.625in Casing Surface	15.00	750.00	735.00	15.00	750.00	0.00	0.00	0.00	0.00
7.875in Open Hole	750.00	7930.83	7180.83	750.00	7785.00	0.00	0.00	1173.06	-16.74

TARGETS

Name	MD [ft]	TVD [ft]	North [ft]	East [ft]	Grid East [srv ft]	Grid North [srv ft]	Latitude	Longitude	Shape
1) GARCIA 29-25 GEO TARGET 50' RADIUS (1300'FNL & 2600'FEL, REV-1)		6000.00	1173.06	-16.74	3183017.21	1349150.66	40°17'23.856"N	104°50'38.148"W	circle
GARCIA 29-25 HARDLINE 60'N OF GEO TARGET		6000.00	1233.06	-16.74	3183016.76	1349210.65	40°17'24.449"N	104°50'38.148"W	point

SURVEY PROGRAM Ref Wellbore: GARCIA 29-25 PWB Ref Wellpath: GARCIA 29-25 (REV-A.0) PWP

Start MD [ft]	End MD [ft]	Positional Uncertainty Model	Log Name/Comment	Wellbore
15.00	7930.83	MTC (Collar, post-2000) (Standard)		GARCIA 29-25 PWB

Planned Wellpath Report

GARCIA 29-25 (REV-A.0) PWP

Page 5 of 5

INTEQ

REFERENCE WELLPATH IDENTIFICATION

Operator	ANADARKO PETROLEUM	Slot	SLOT#04 GARCIA 29-25 (1234'FNL & 1335'FWL)
Area	COLORADO	Well	GARCIA 29-25
Field	WELD COUNTY (ANADARKO)	Wellbore	GARCIA 29-25 PWB
Facility	SEC.25-T4N-R67W		

WELLPATH COMMENTS

MD [ft]	Inclination [°]	Azimuth [°]	TVD [ft]	Comment
3710.45	15.000	359.182	3630.00	PARKMAN TOP
4228.09	15.000	359.182	4130.00	SUSSEX TOP
4818.20	15.000	359.182	4700.00	SHANNON TOP
7074.83	0.000	359.182	6929.00	NIO A TOP
7384.83	0.000	359.182	7239.00	CODELL TOP
7777.83	0.000	359.182	7632.00	JSAND TOP