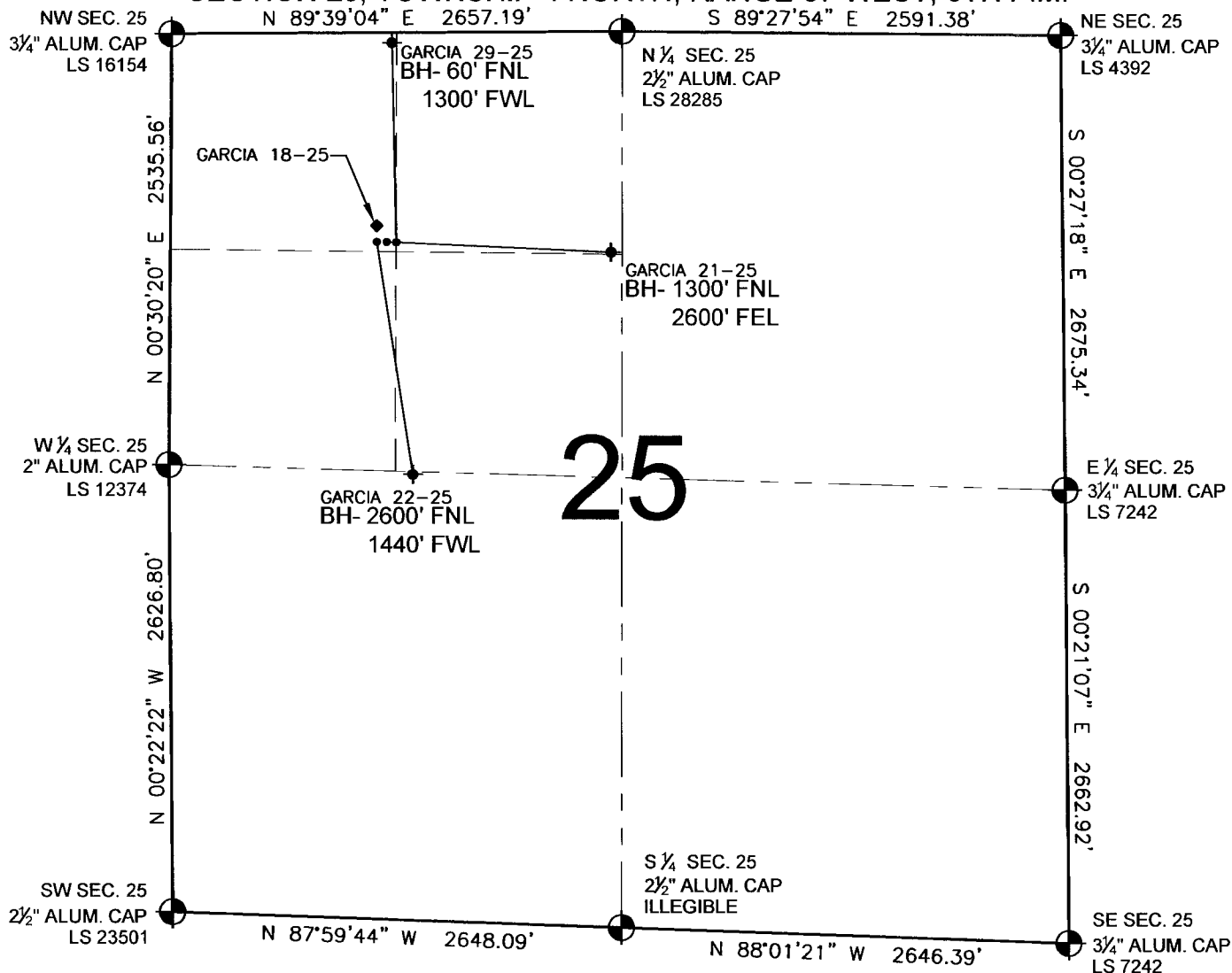


PAD DRAWING - GARCIA 3 PAD

SECTION 25, TOWNSHIP 4 NORTH, RANGE 67 WEST, 6TH P.M.



NOTES:

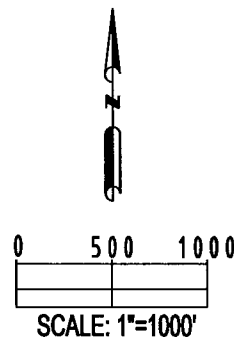
1. THIS SURVEY WAS DONE BY GPS METHODS AND CONFORMS TO THE MINIMUM STANDARDS SET BY THE C.O.G.C.C., RULE NO. 215 (PDOP VALUE IS LESS THAN 6.0, LATITUDE AND LONGITUDE ARE ACCURATE TO 5 DECIMAL PLACES, AND GPS OBSERVATIONS ARE DIFFERENTIAL AND DONE BY QUALIFIED PERSONNEL.)
2. ELEVATIONS SHOWN AT THE WELL HEAD, AS WELL AS HORIZONTAL CONTROL, ARE BASED ON GPS-RTK VALUES DERIVED FROM DOING 2-HOUR STATIC GPS SESSIONS AND REDUCTIONS USING O.P.U.S. SOLUTIONS.
VERTICAL = NAVD88; HORIZONTAL = NAD83/92
3. THE BEARINGS SHOWN HEREON ARE BASED ON GPS OBSERVATIONS BETWEEN THE MONUMENTS SHOWN HEREON AS FOUND ON THE FIELD DATE BELOW.
4. DISTANCES SHOWN ARE AT GROUND LEVEL, AS MEASURED IN THE FIELD, WITH TIES TO WELLS MEASURED AT A PERPENDICULAR TO SECTION LINES.

LEGEND

- = EXISTING MONUMENT
 = BOTTOM HOLE
 BH= BOTTOM HOLE
 = PROPOSED WELL
 = EXISTING WELL

NOTES:

GARCIA 29-25 TO BE AT 1234' FNL, 1335' FWL.
 BOTTOM HOLE AT 60' FNL & 1300' FWL.
 GARCIA 21-25 TO BE AT 1234' FNL, 1319' FWL.
 BOTTOM HOLE AT 1300' FNL & 2600' FEL.
 GARCIA 22-25 TO BE AT 1234' FNL, 1303' FWL.
 BOTTOM HOLE AT 2600' FNL & 1440' FWL.
 GARCIA 18-25 IS 1186' FNL, 1300' FWL.



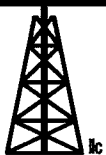
REVISIONS

INITIAL	DATE
SMF	08-04-09

PREPARED BY:

PFS

Petroleum Field Services, LLC
1801 W. 13th Ave.
Denver, CO 80204



KERR-MCGEE OIL & GAS ONSHORE LP

FIELD DATE:
06-25-09

DRAWING DATE:
06-26-09

BY:
SMF

PAD NAME:
GARCIA 3 PAD

SURFACE LOCATION:
WELD COUNTY, COLORADO
NW 1/4 NW 1/4, SEC. 25, T4N, R67W
NE 1/4 NW 1/4, SEC. 25, T4N, R67W