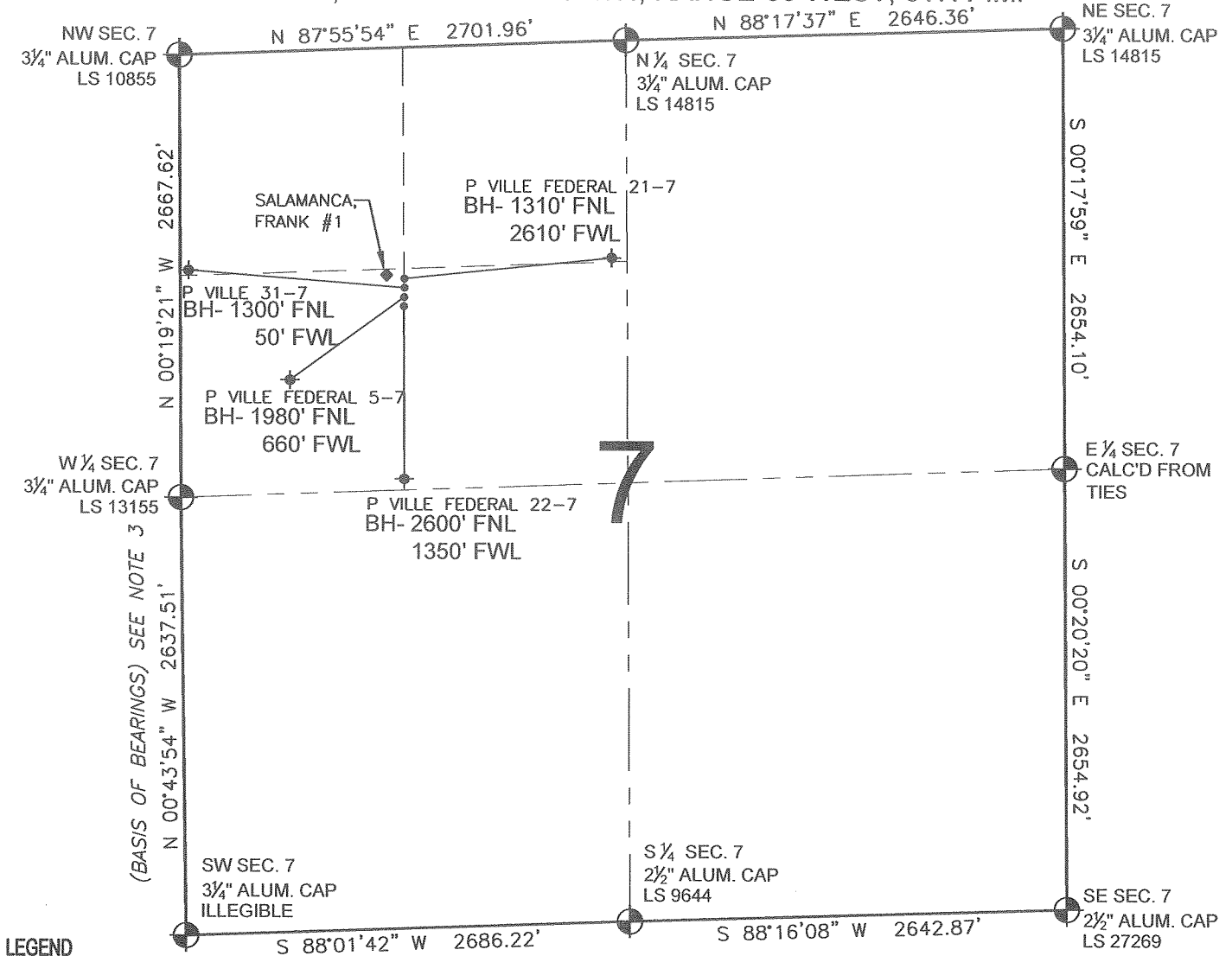


PAD DRAWING - P VILLE FEDERAL 4 PAD

SECTION 7, TOWNSHIP 3 NORTH, RANGE 66 WEST, 6TH P.M.



LEGEND

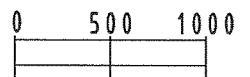
- = EXISTING MONUMENT
- ◆ = BOTTOM HOLE
- BH= BOTTOM HOLE
- = PROPOSED WELL
- ◆ = EXISTING WELL

NOTES:

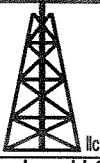
- THIS SURVEY WAS DONE BY GPS METHODS AND CONFORMS TO THE MINIMUM STANDARDS SET BY THE C.O.G.C.C., RULE NO. 215 (PDOP VALUE IS LESS THAN 6.0, LATITUDE AND LONGITUDE ARE ACCURATE TO 5 DECIMAL PLACES, AND GPS OBSERVATIONS ARE DIFFERENTIAL AND DONE BY QUALIFIED PERSONNEL.)
- ELEVATIONS SHOWN AT THE WELL HEAD, AS WELL AS HORIZONTAL CONTROL, ARE BASED ON GPS-RTK VALUES DERIVED FROM DOING 2-HOUR STATIC GPS SESSIONS AND REDUCTIONS USING O.P.U.S. SOLUTIONS.
VERTICAL = NAVD88; HORIZONTAL = NAD83/92
- THE BEARINGS SHOWN HEREON ARE BASED ON GPS OBSERVATIONS BETWEEN THE MONUMENTS SHOWN HEREON AS FOUND ON THE FIELD DATE BELOW.
- DISTANCES SHOWN ARE AT GROUND LEVEL, AS MEASURED IN THE FIELD, WITH TIES TO WELLS MEASURED AT A PERPENDICULAR TO SECTION LINES.

NOTES:

- P VILLE FEDERAL 22-7 TO BE AT 1539' FNL, 1352' FWL.
- BOTTOM HOLE AT 2600' FNL & 1350' FWL.
- P VILLE FEDERAL 5-7 TO BE AT 1523' FNL, 1352' FWL.
- BOTTOM HOLE AT 1980' FNL & 660' FWL.
- P VILLE 31-7 TO BE AT 1507' FNL, 1352' FWL.
- BOTTOM HOLE AT 1300' FNL & 50' FWL.
- P VILLE FEDERAL 21-7 TO BE AT 1491' FNL, 1352' FWL.
- BOTTOM HOLE AT 1310' FNL & 2610' FWL.
- SALAMANCA, FRANK #1 IS 1483' FNL, 1305' FWL.



SCALE: 1"=1000'

REVISIONS		PREPARED BY:	
INITIAL	DATE		
CP	03-30-09	PFS Petroleum Field Services, LLC 1801 W. 13th Ave. Denver, CO 80204	
SMF	05-11-09		

KERR-MCGEE OIL & GAS ONSHORE LP

FIELD DATE: 02-26-09	PAD NAME: P VILLE FEDERAL 4 PAD
DRAWING DATE: 03-03-09	SURFACE LOCATION:
BY: SMF	WELD COUNTY, COLORADO NW 1/4 SE 1/4, SEC. 7, T3N, R66W