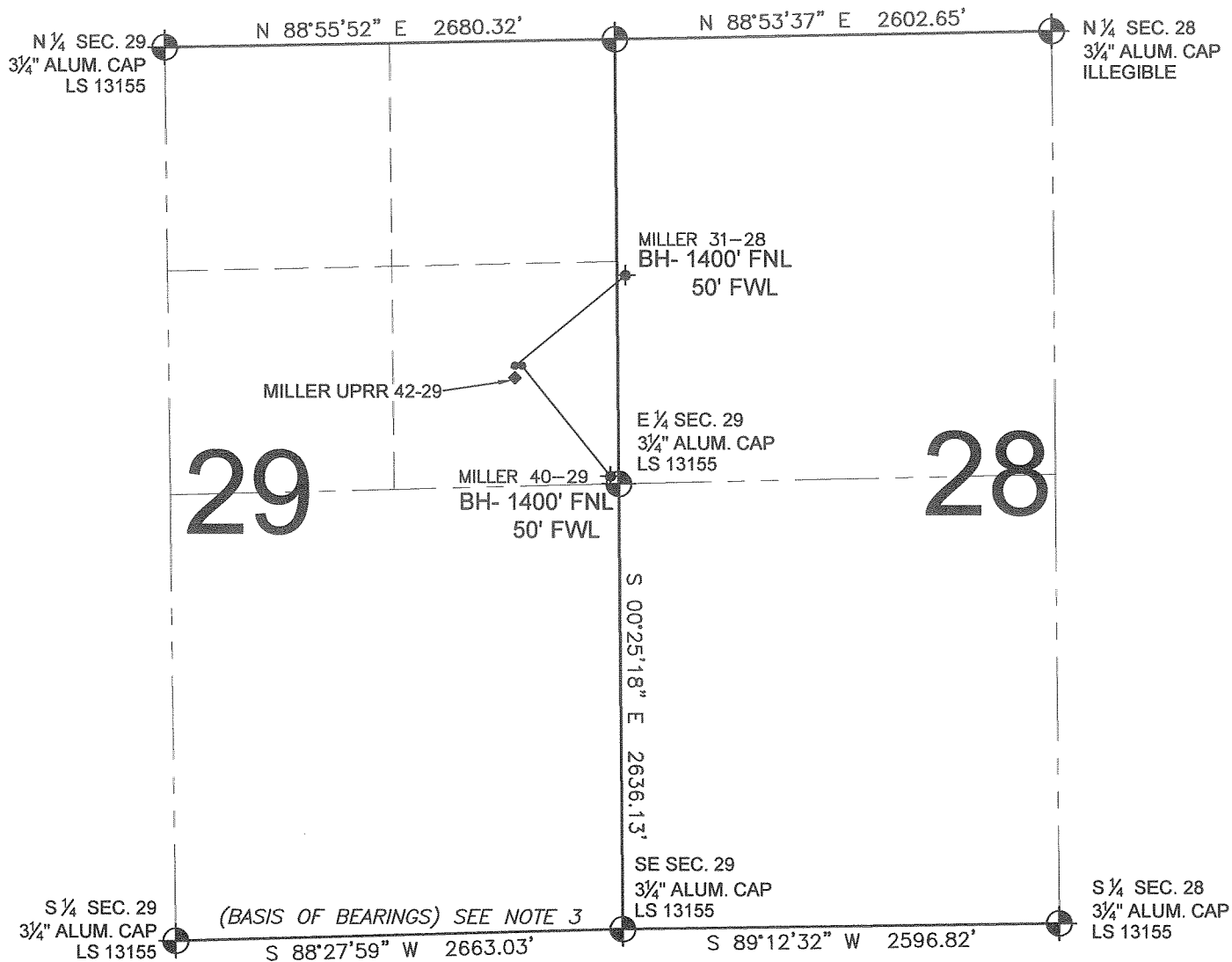


# PAD DRAWING-SENE SEC. 29

## SECTION 29, TOWNSHIP 3 NORTH, RANGE 66 WEST, 6TH P.M.



### LEGEND

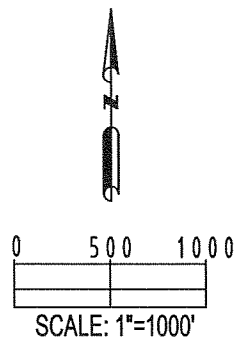
- = EXISTING MONUMENT    ♦ = BOTTOM HOLE    BH= BOTTOM HOLE
- = PROPOSED WELL    ♦ = EXISTING WELL


### NOTES:

MILLER 40-29 TO BE AT 1926' FNL, 568' FEL.  
 BOTTOM HOLE AT 2590' FNL & 50' FEL.  
 MILLER 31-28 TO BE AT 1926' FNL, 598' FEL.  
 BOTTOM HOLE AT 1400' FNL & 50' FWL.  
 MILLER UPRR 42-29 IS AT 1974' FNL, 598' FEL.

### NOTES:

- THIS SURVEY WAS DONE BY GPS METHODS AND CONFORMS TO THE MINIMUM STANDARDS SET BY THE C.O.G.C.C., RULE NO. 215 (PDOP VALUE IS LESS THAN 6.0, LATITUDE AND LONGITUDE ARE ACCURATE TO 5 DECIMAL PLACES, AND GPS OBSERVATIONS ARE DIFFERENTIAL AND DONE BY QUALIFIED PERSONNEL.)
- ELEVATIONS SHOWN AT THE WELL HEAD, AS WELL AS HORIZONTAL CONTROL, ARE BASED ON GPS-RTK VALUES DERIVED FROM DOING 2-HOUR STATIC GPS SESSIONS AND REDUCTIONS USING O.P.U.S. SOLUTIONS.  
 VERTICAL = NAVD88;    HORIZONTAL = NAD83/92
- THE BEARINGS SHOWN HEREON ARE BASED ON GPS OBSERVATIONS BETWEEN THE MONUMENTS SHOWN HEREON AS FOUND ON THE FIELD DATE BELOW.
- DISTANCES SHOWN ARE AT GROUND LEVEL, AS MEASURED IN THE FIELD, WITH TIES TO WELLS MEASURED AT A PERPENDICULAR TO SECTION LINES.



REVISIONS		PREPARED BY:	 Petroleum Field Services, LLC 1801 W. 13th Ave. Denver, CO 80204
INITIAL	DATE		

KERR-MCGEE OIL & GAS ONSHORE LP

FIELD DATE: 03-06-09	WELL NAME: MILLER 31-28, MILLER 40-29
DRAWING DATE: 03-12-09	SURFACE LOCATION: WELD COUNTY, COLORADO SE 1/4 NE 1/4, SEC. 29, T3N, R66W
BY: CP	