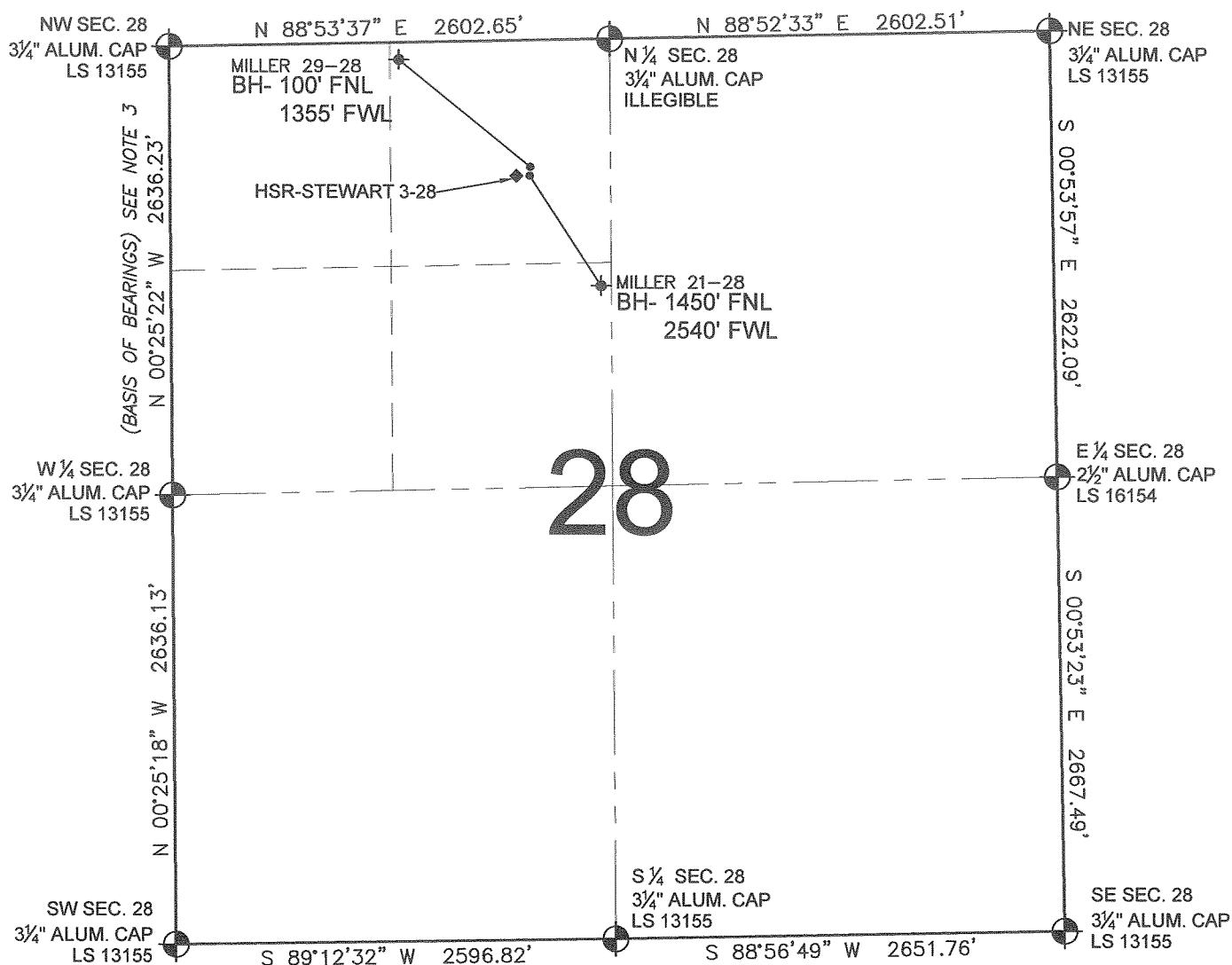


PAD DRAWING-NENW SEC. 28

SECTION 28, TOWNSHIP 3 NORTH, RANGE 66 WEST, 6TH P.M.



LEGEND

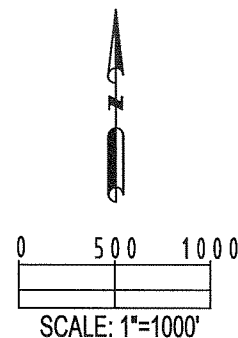
- = EXISTING MONUMENT
 = BOTTOM HOLE
 = PROPOSED WELL
 = EXISTING WELL
 BH= BOTTOM HOLE

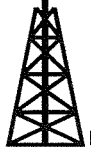
NOTES:

MILLER 29-28 TO BE AT 767' FNL, 2125' FWL.
 BOTTOM HOLE AT 100' FNL & 1355' FWL.
 MILLER 21-28 TO BE AT 797' FNL, 2125' FWL.
 BOTTOM HOLE AT 1450' FNL & 2540' FWL.
 HSR-STEWART 3-28 IS AT 797' FNL, 2077' FWL.

NOTES:

1. THIS SURVEY WAS DONE BY GPS METHODS AND CONFORMS TO THE MINIMUM STANDARDS SET BY THE C.O.G.C.C., RULE NO. 215 (PDOP VALUE IS LESS THAN 6.0, LATITUDE AND LONGITUDE ARE ACCURATE TO 5 DECIMAL PLACES, AND GPS OBSERVATIONS ARE DIFFERENTIAL AND DONE BY QUALIFIED PERSONNEL.)
2. ELEVATIONS SHOWN AT THE WELL HEAD, AS WELL AS HORIZONTAL CONTROL, ARE BASED ON GPS-RTK VALUES DERIVED FROM DOING 2-HOUR STATIC GPS SESSIONS AND REDUCTIONS USING O.P.U.S. SOLUTIONS.
 VERTICAL = NAVD88; HORIZONTAL = NAD83/92
3. THE BEARINGS SHOWN HEREON ARE BASED ON GPS OBSERVATIONS BETWEEN THE MONUMENTS SHOWN HEREON AS FOUND ON THE FIELD DATE BELOW.
4. DISTANCES SHOWN ARE AT GROUND LEVEL, AS MEASURED IN THE FIELD, WITH TIES TO WELLS MEASURED AT A PERPENDICULAR TO SECTION LINES.



REVISIONS		PREPARED BY:	 PFS Petroleum Field Services, LLC 1801 W. 13th Ave. Denver, CO 80204
INITIAL	DATE		

KERR-MCGEE OIL & GAS ONSHORE LP

FIELD DATE: 03-06-09	WELL NAME: MILLER 21-28, MILLER 29-28
DRAWING DATE: 03-12-09	SURFACE LOCATION: WELD COUNTY, COLORADO NE 1/4 NW 1/4, SEC. 28, T3N, R66W
BY: CP	