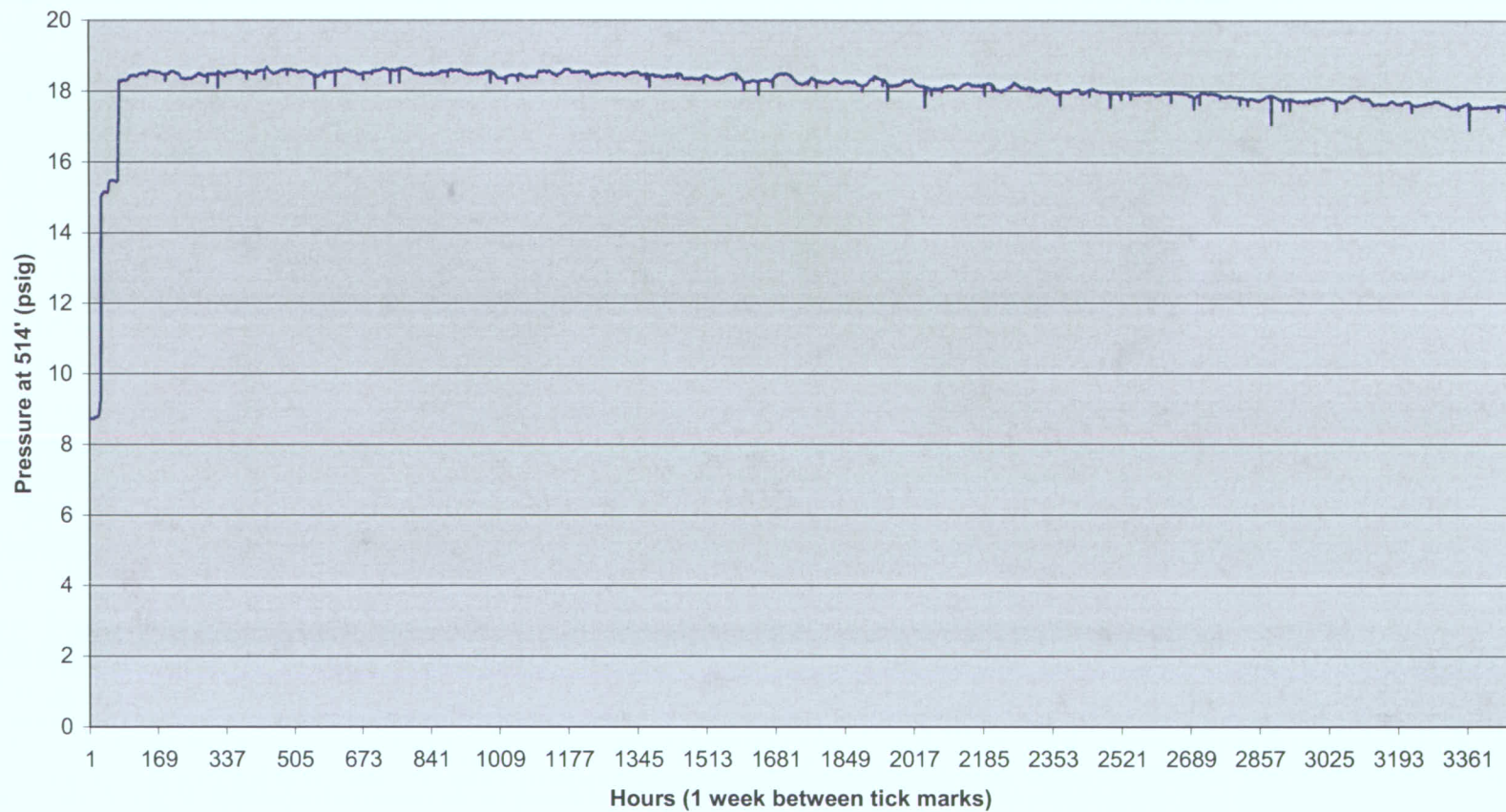
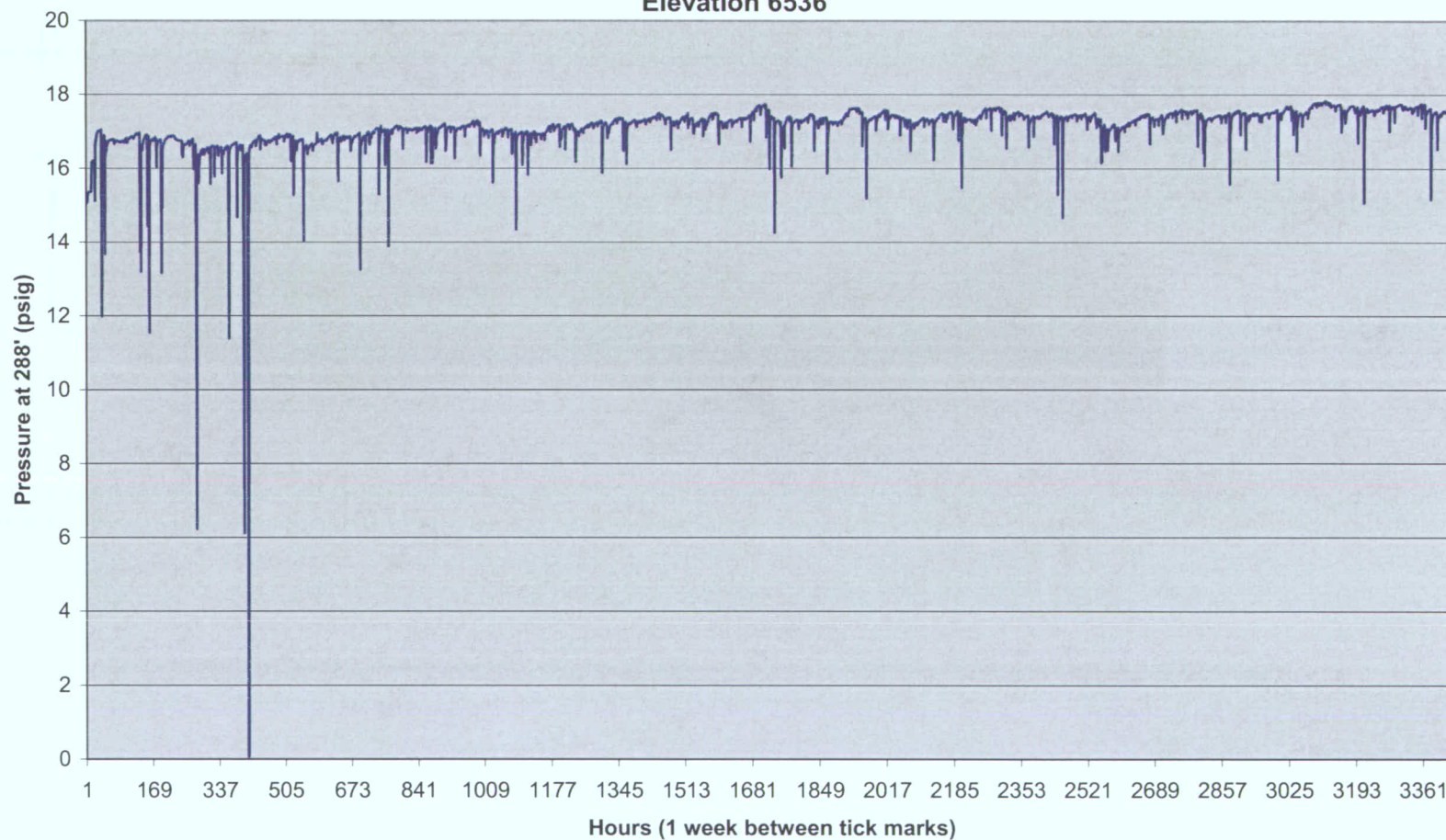


Pressure at 595' from 10/3/08 to 2/25/09
Evenden WW, Permit # 221465
Lot 117 Silver Spurs Ranch
Elevation 6712'

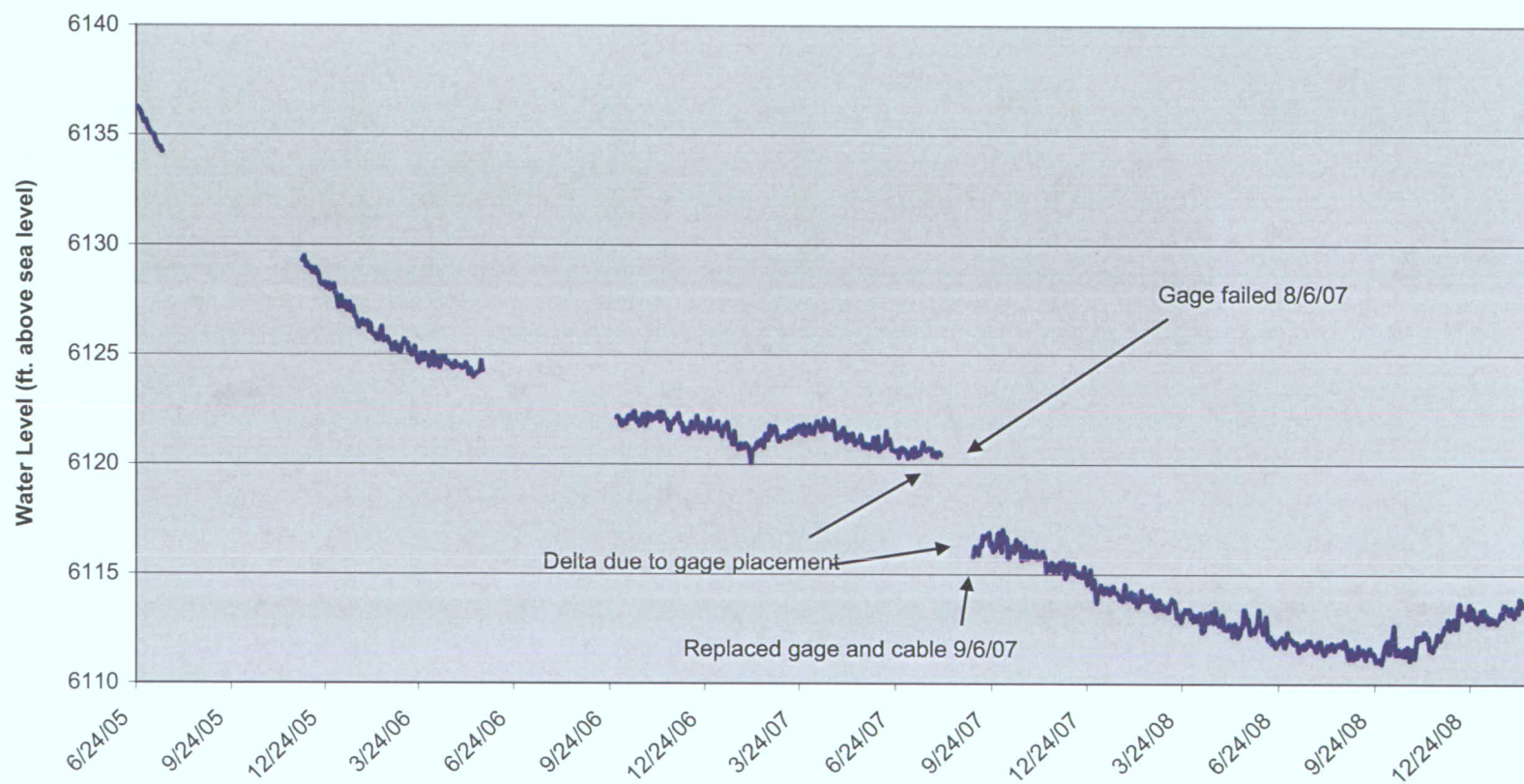


#1944553

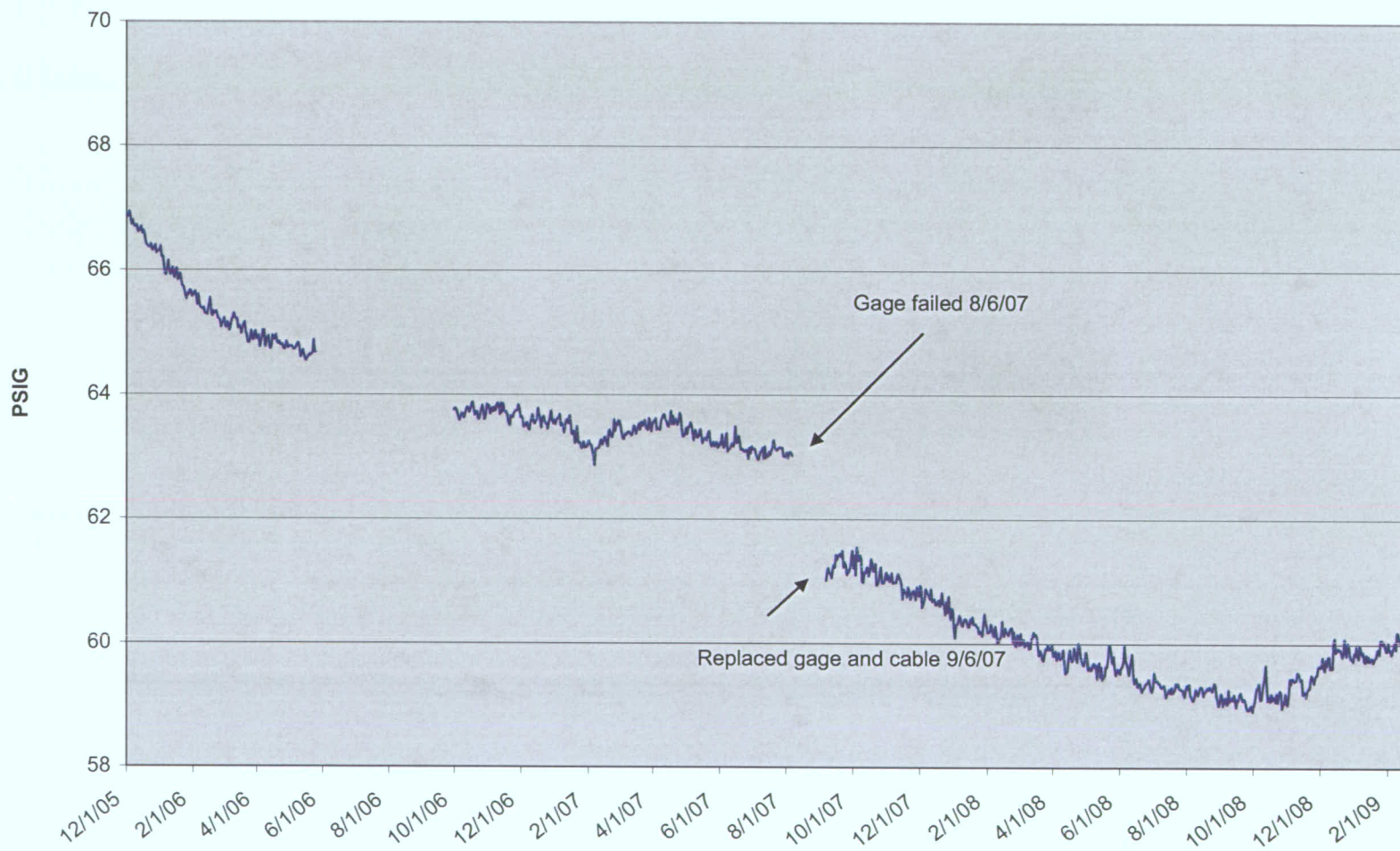
Pressure at 288' from 10/3/08 to 2/24/09
Garza WW, Permit # 206886
Silver Spurs Ranch, Lot 60
Elevation 6536'



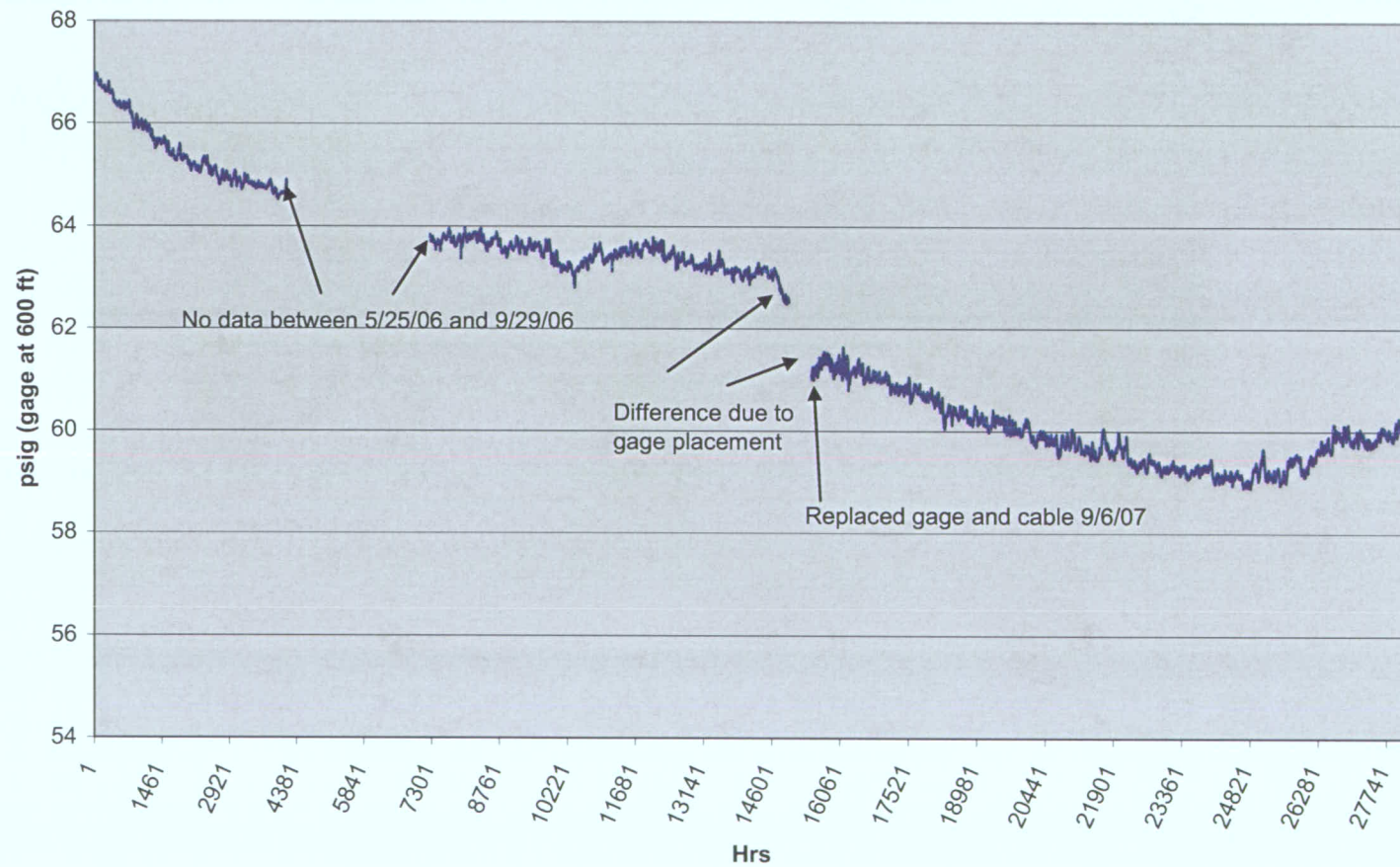
Meyer WW Water Level from 6/24/05 to 2/23/09
Permit # 248862
Lot 120 RRR
SW, NE Sec 30 T28S R66W



Meyers WW BHP from 12/1/05 to 2/23/09
Permit #248862, Lot 120 RRR, SW, NE Sec 30 T 28S R66W, G.L. Elev. 6575'

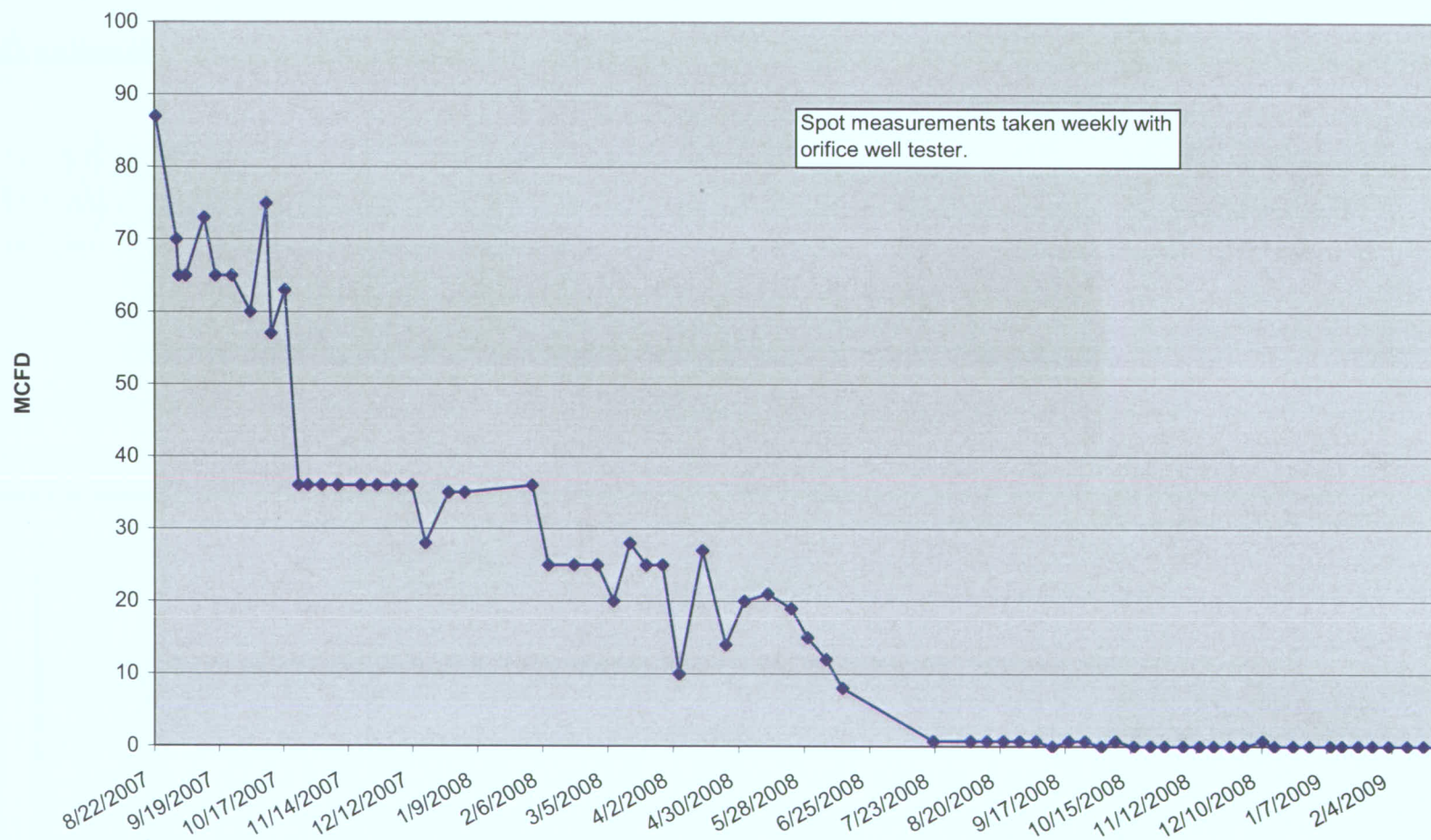


Meyers WW 11/30/05 to 2/23/09
Permit # 248862
Lot 120 RRR
SW, NE Sec 30 T28S R66W
G.L. elev. 6575'

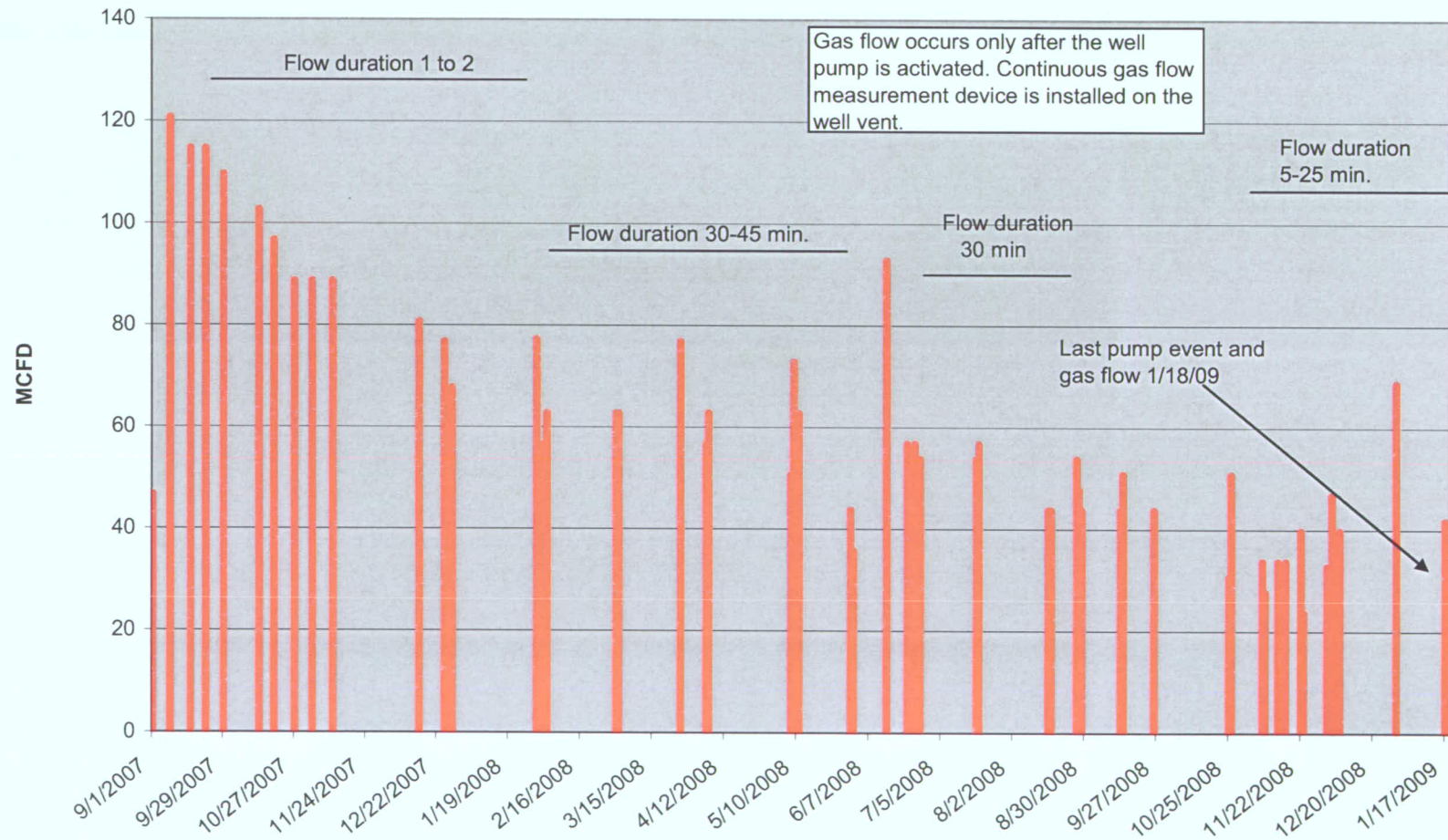


Attachment 3
Gas Flow Measurements at Bruington, Coleman, Angely, Bounds, and Smith

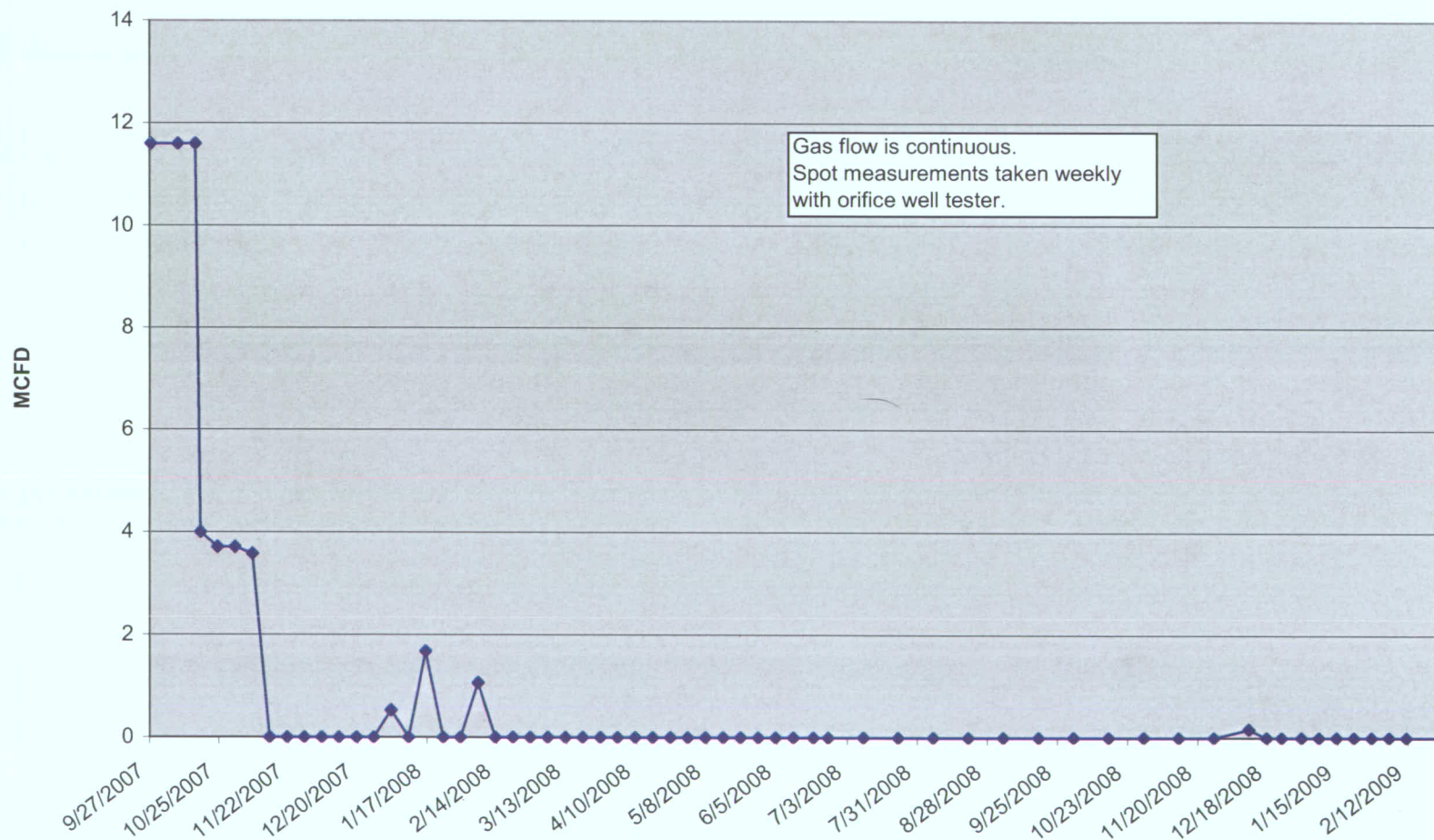
**Bruington WW # 210526 Measured Gas Flow
from 8/22/07 to 2/23/09**



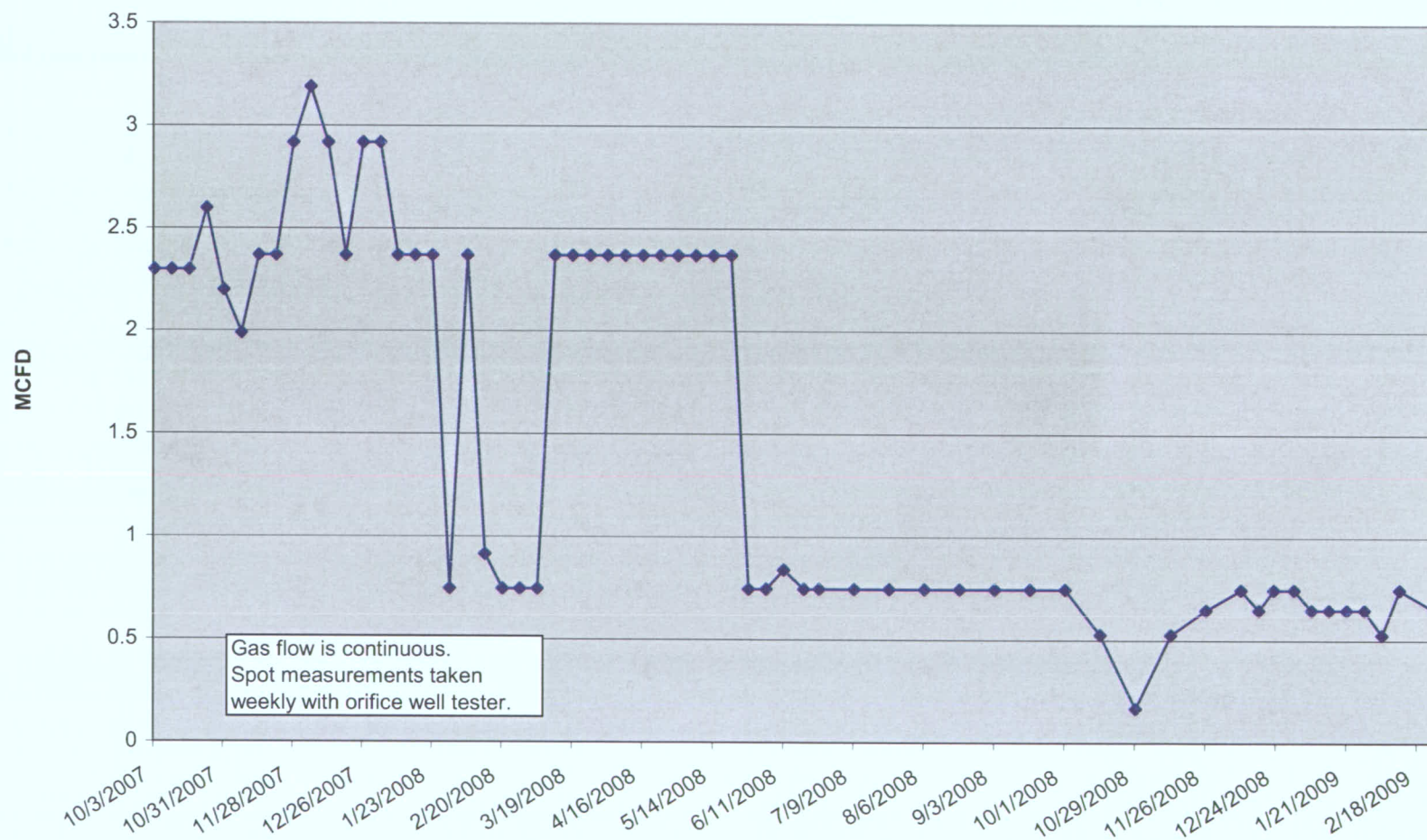
**Coleman WW #267294 Measured Gas Flow
from 9/1/07 to 2/27/09**



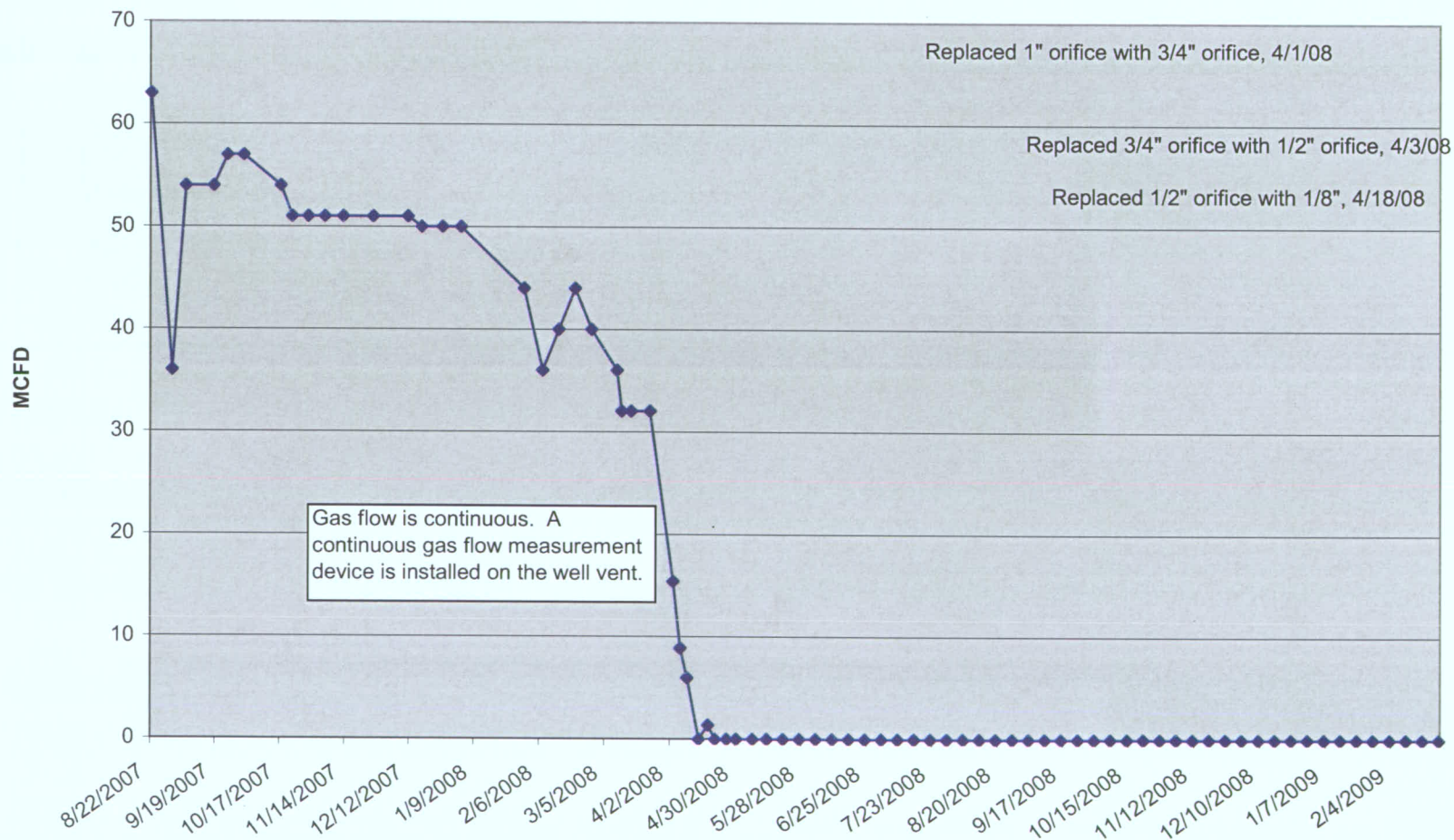
**Angely WW # 238689 Measured Gas Flow
from 9/27/07 to 2/25/09**



**Bounds WW #181278 Measured Gas Flow
from 10/3/07 to 2/25/09**

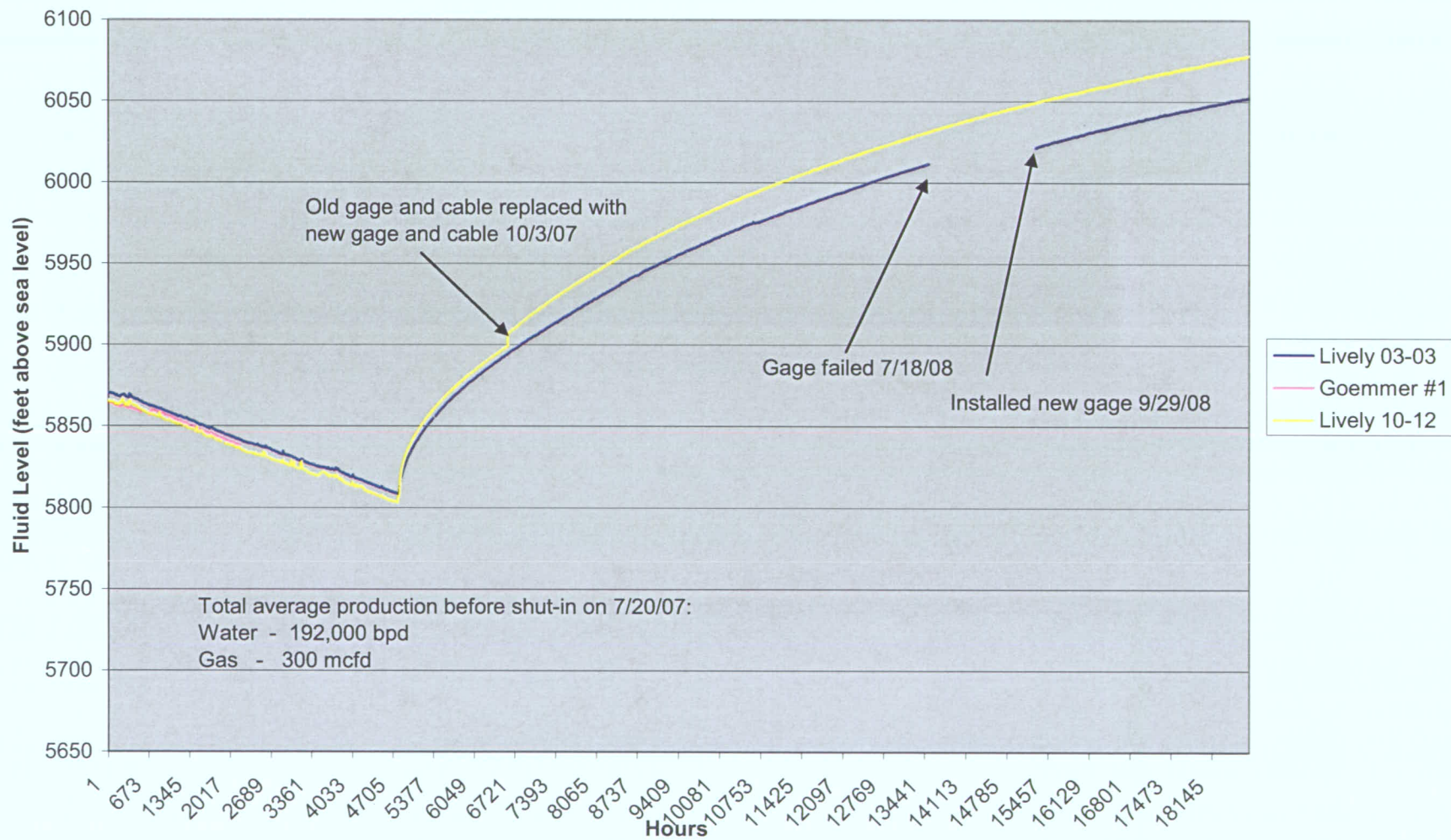


**Smith WW # 239657 Measured Gas Flow
from 8/22/07 to 2/24/09**

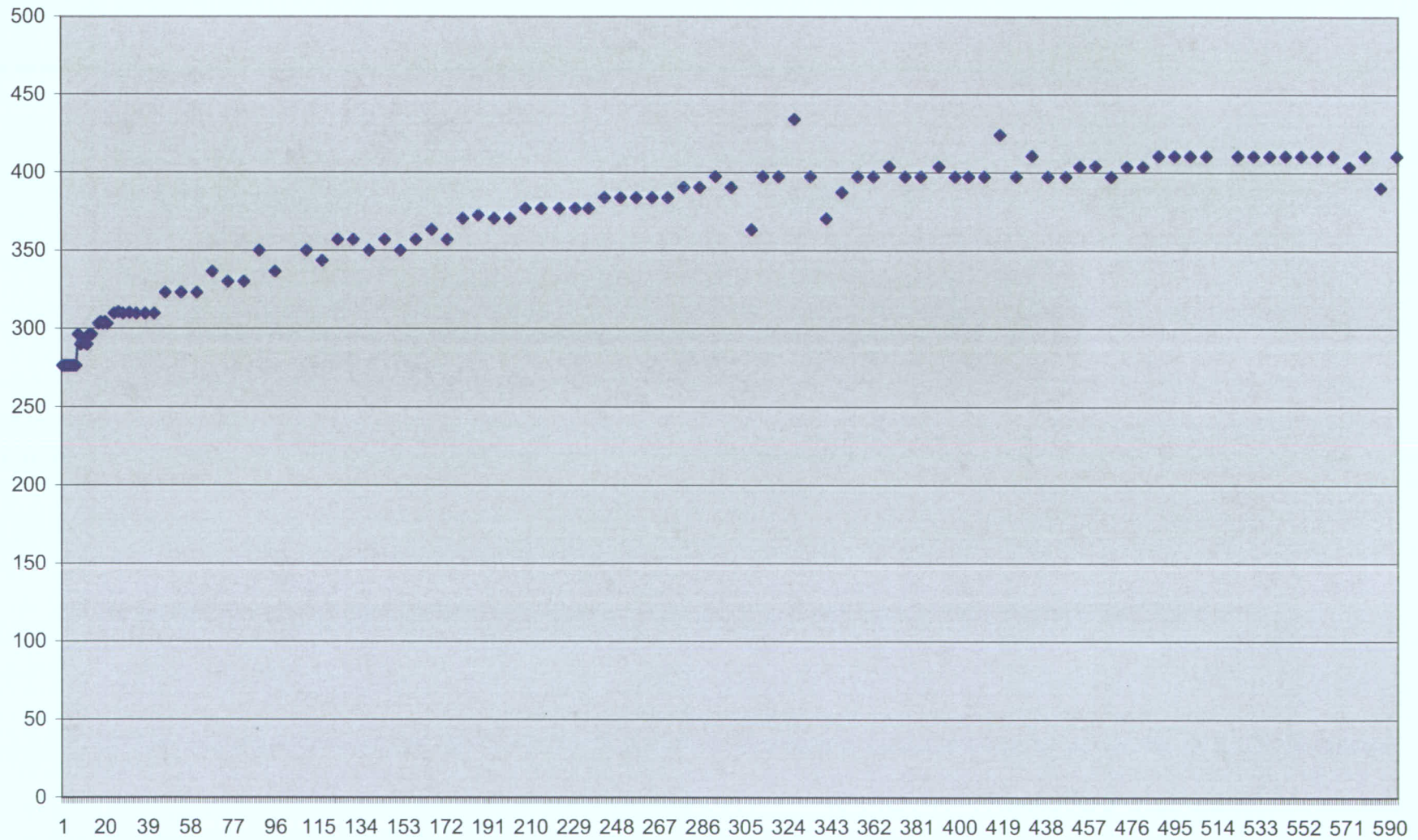


Attachment 4
Fluid Levels in Petroglyph Production Wells
(Results in psia, unless stated otherwise)

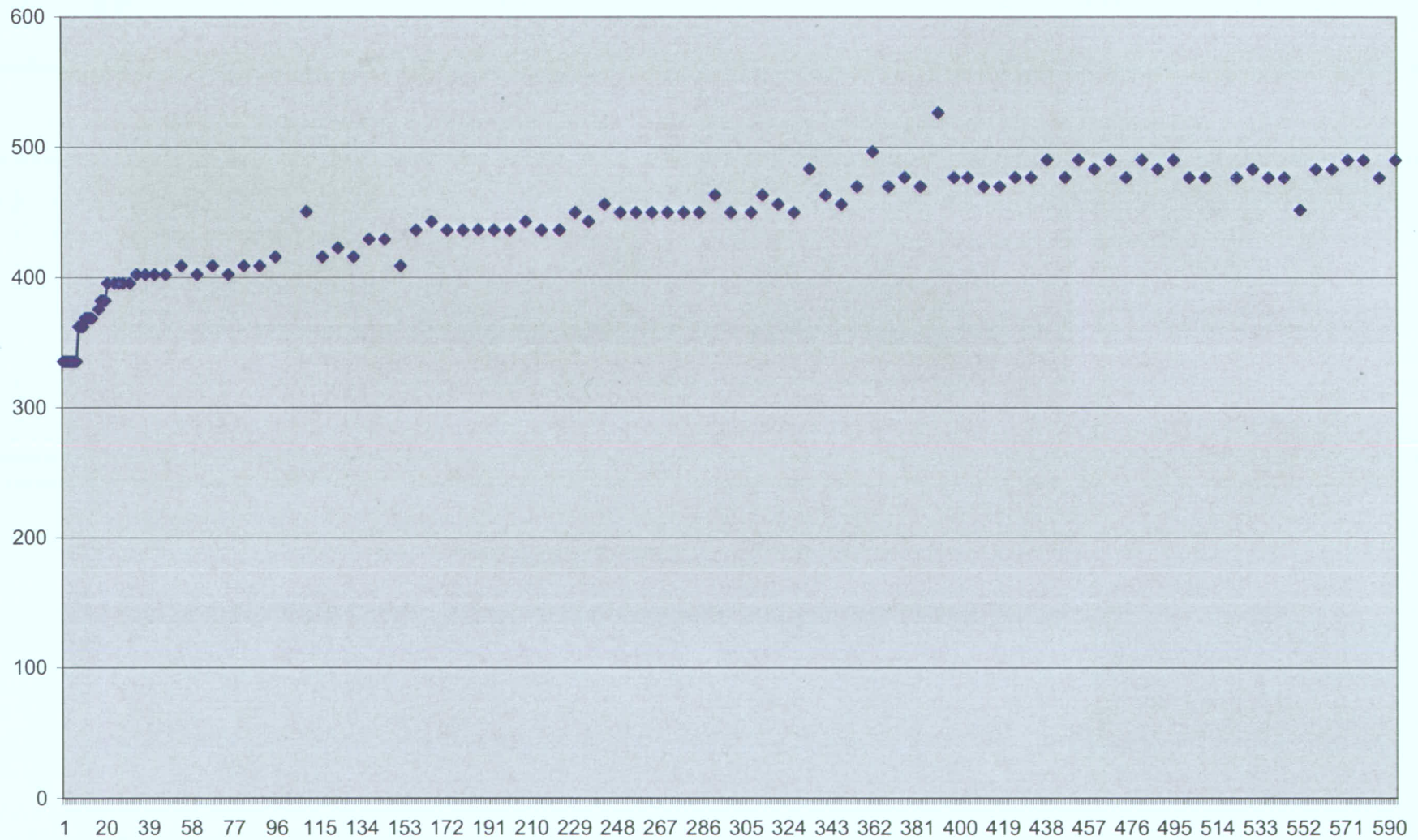
Monitor Well Fluid Levels PBU
from 1/1/07 to 2/21/09



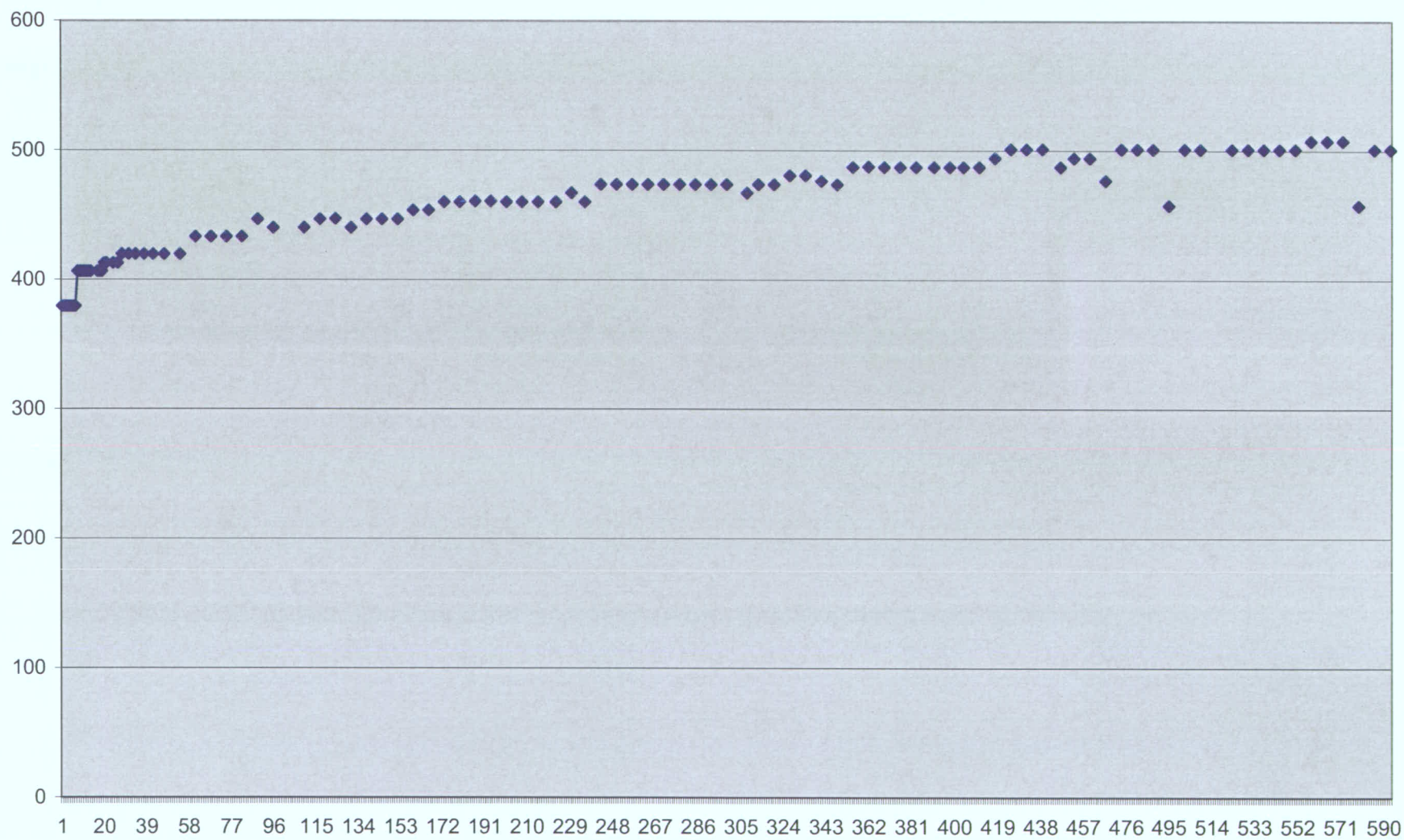
Lively 02-02



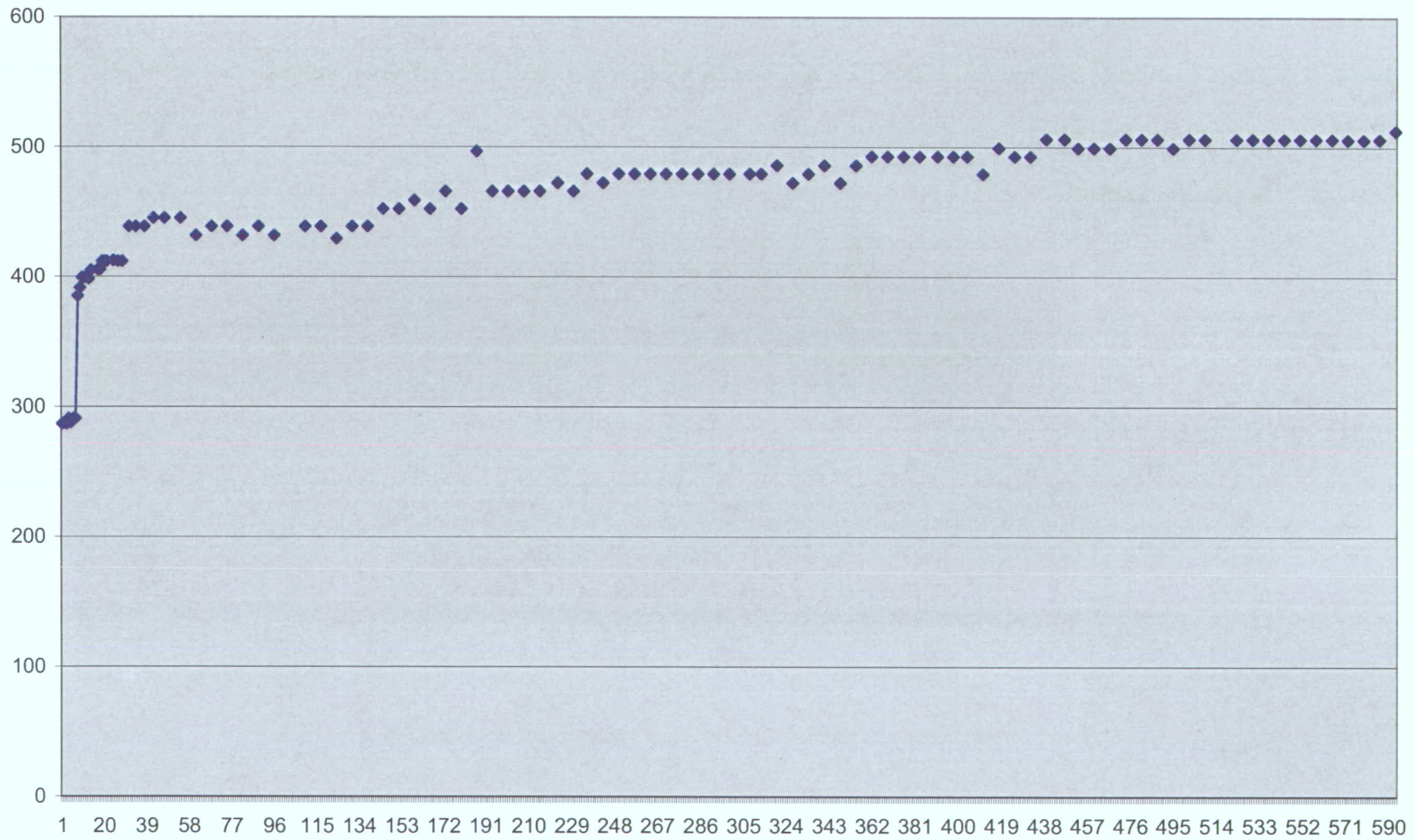
Lively 02-12



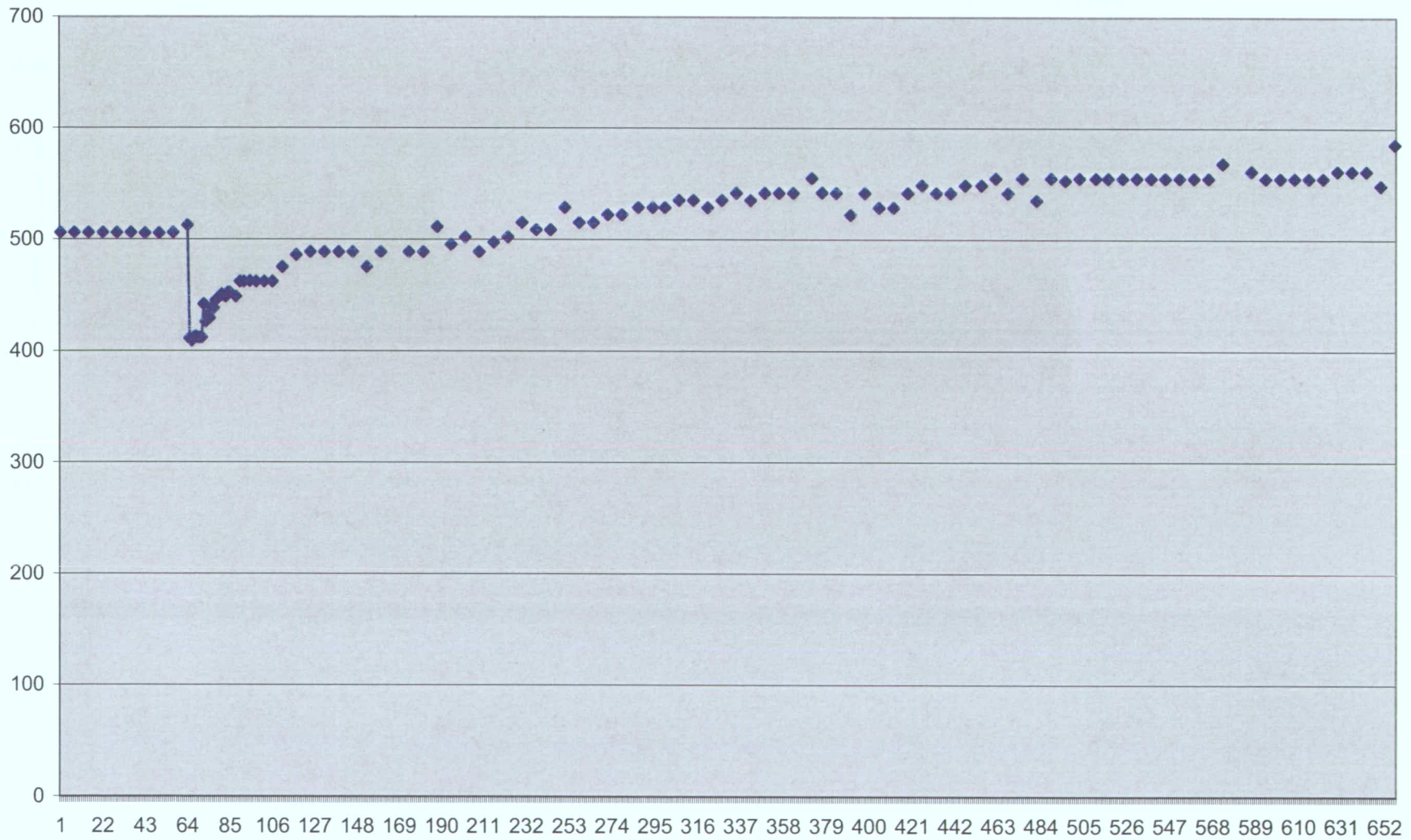
Lively 03-01



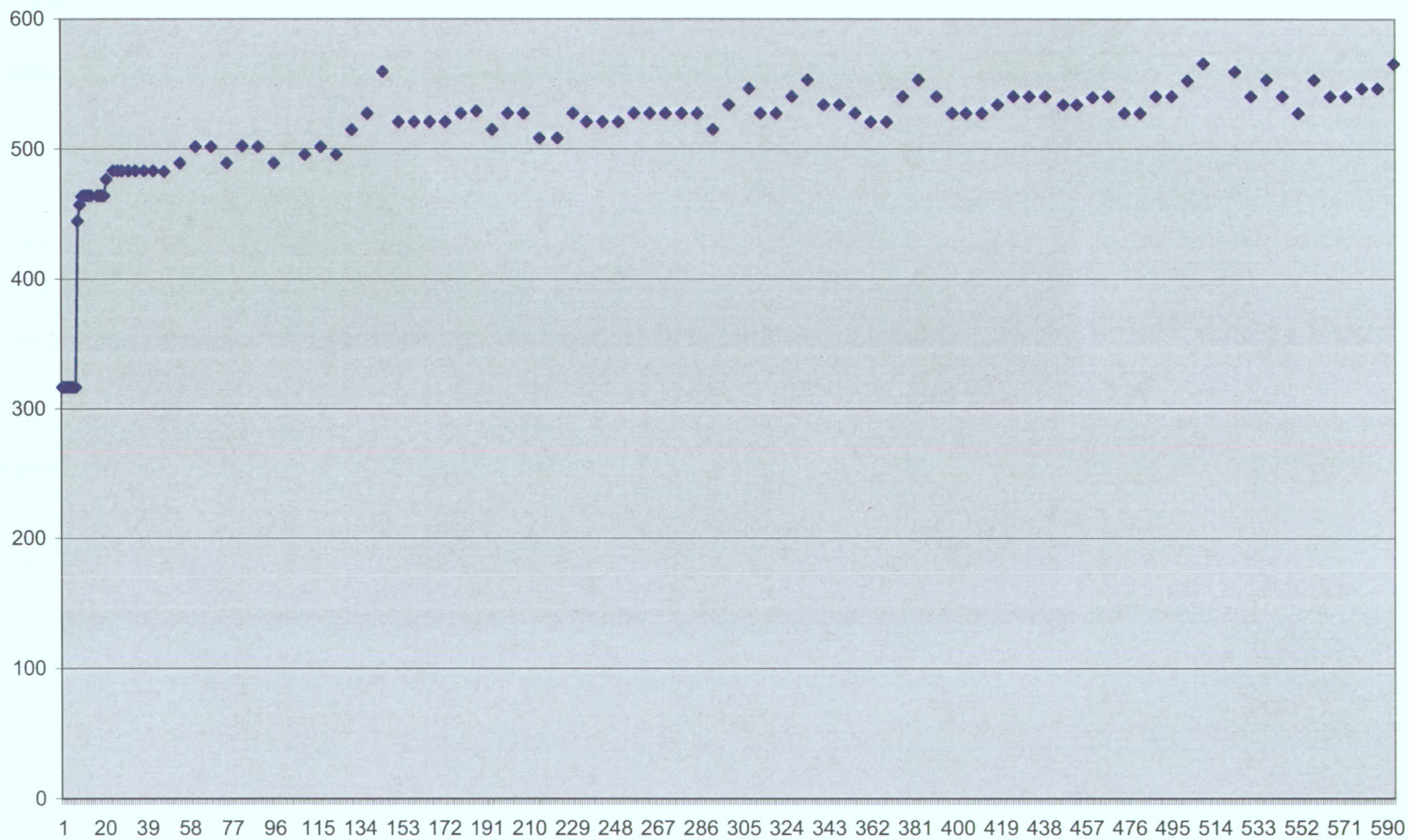
Lively 03-10



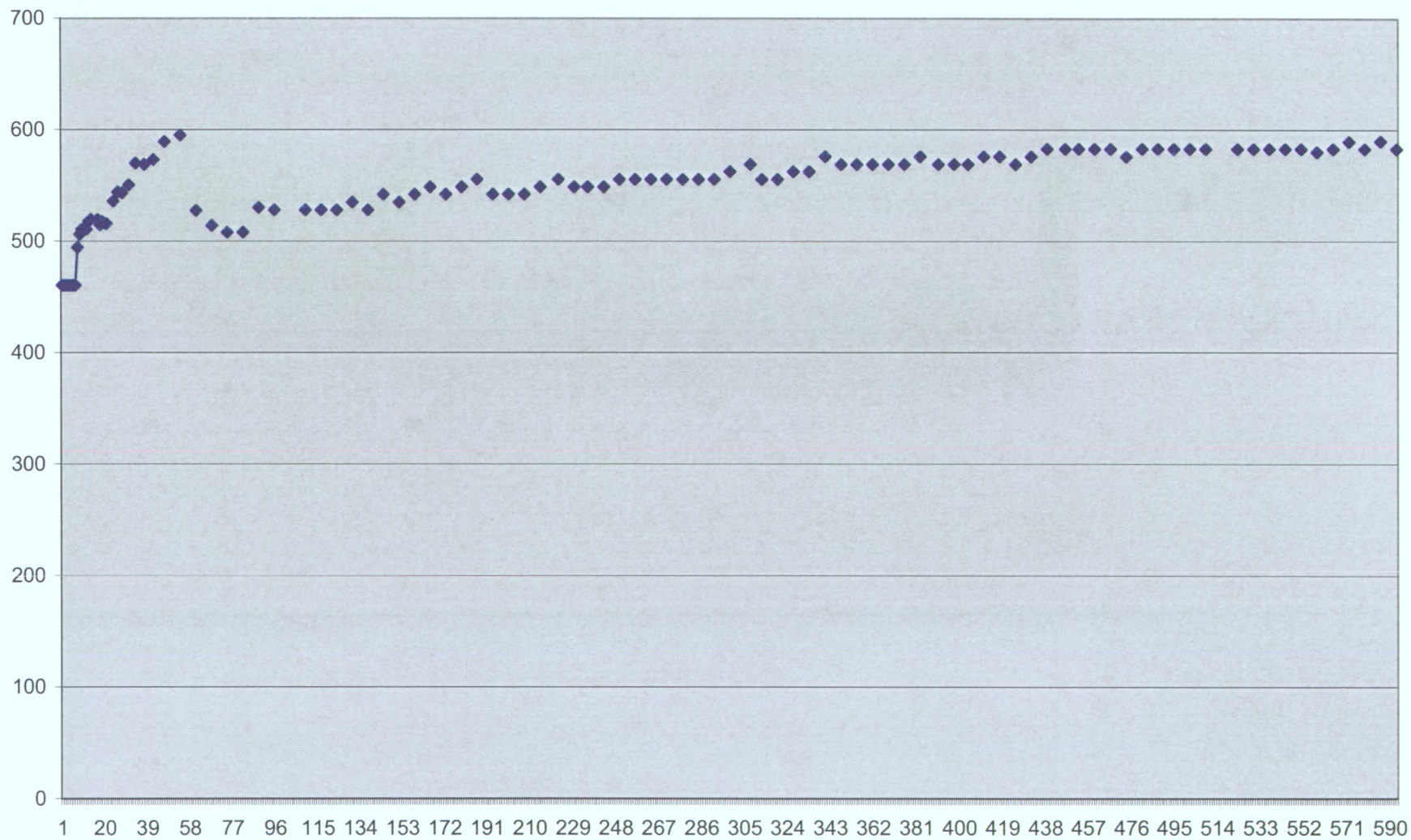
Lively 03-12



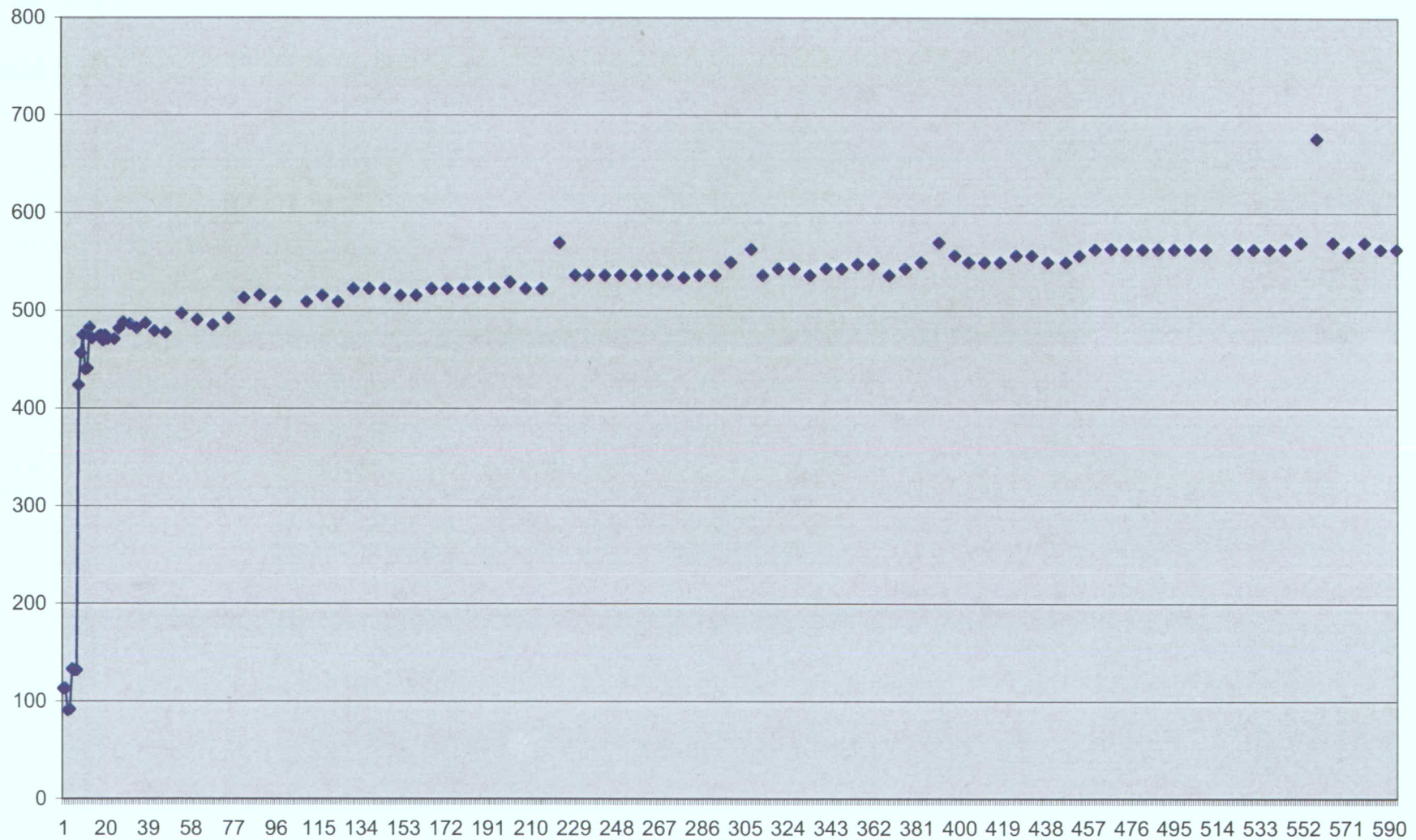
Lively 10-04



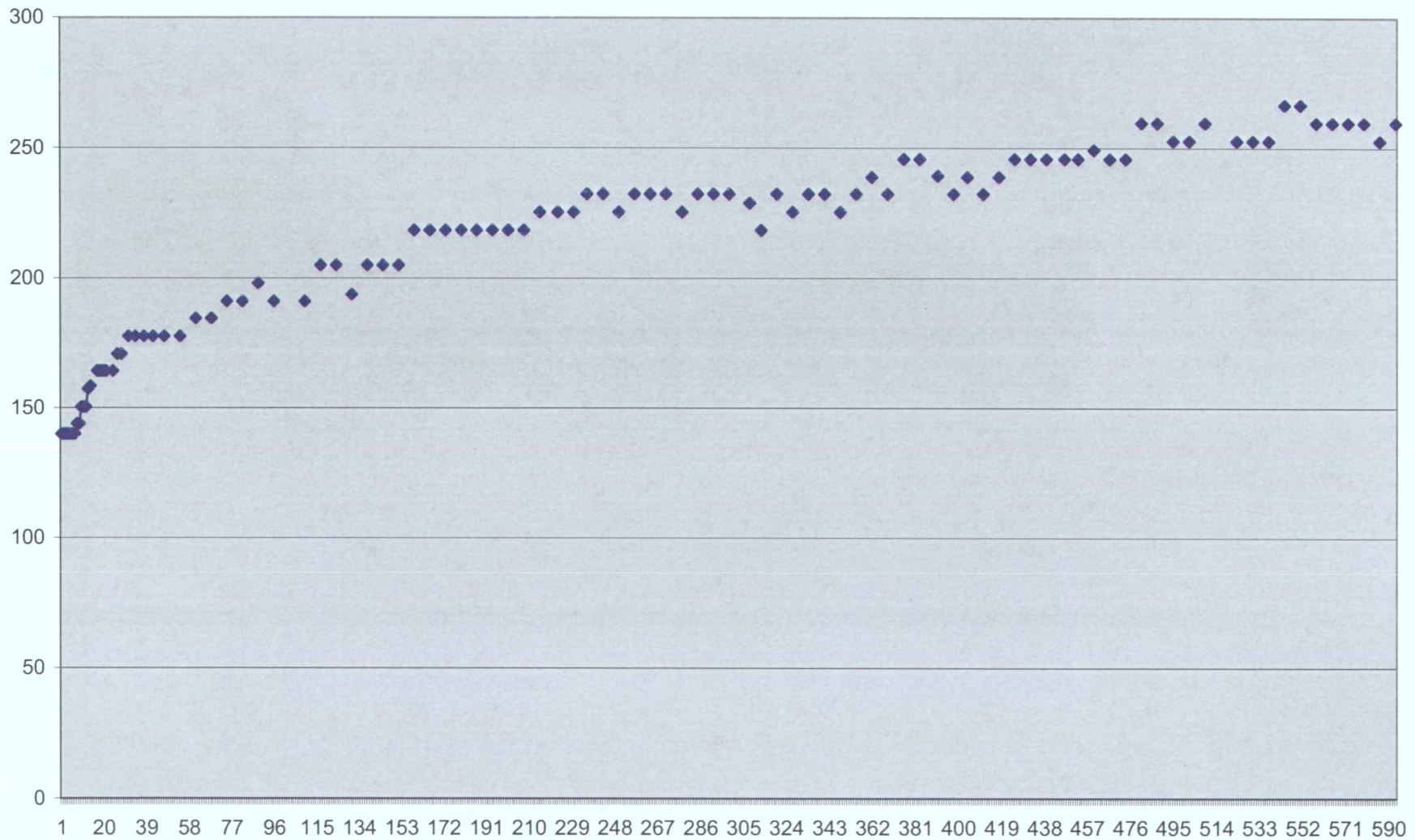
Rohr 04-10



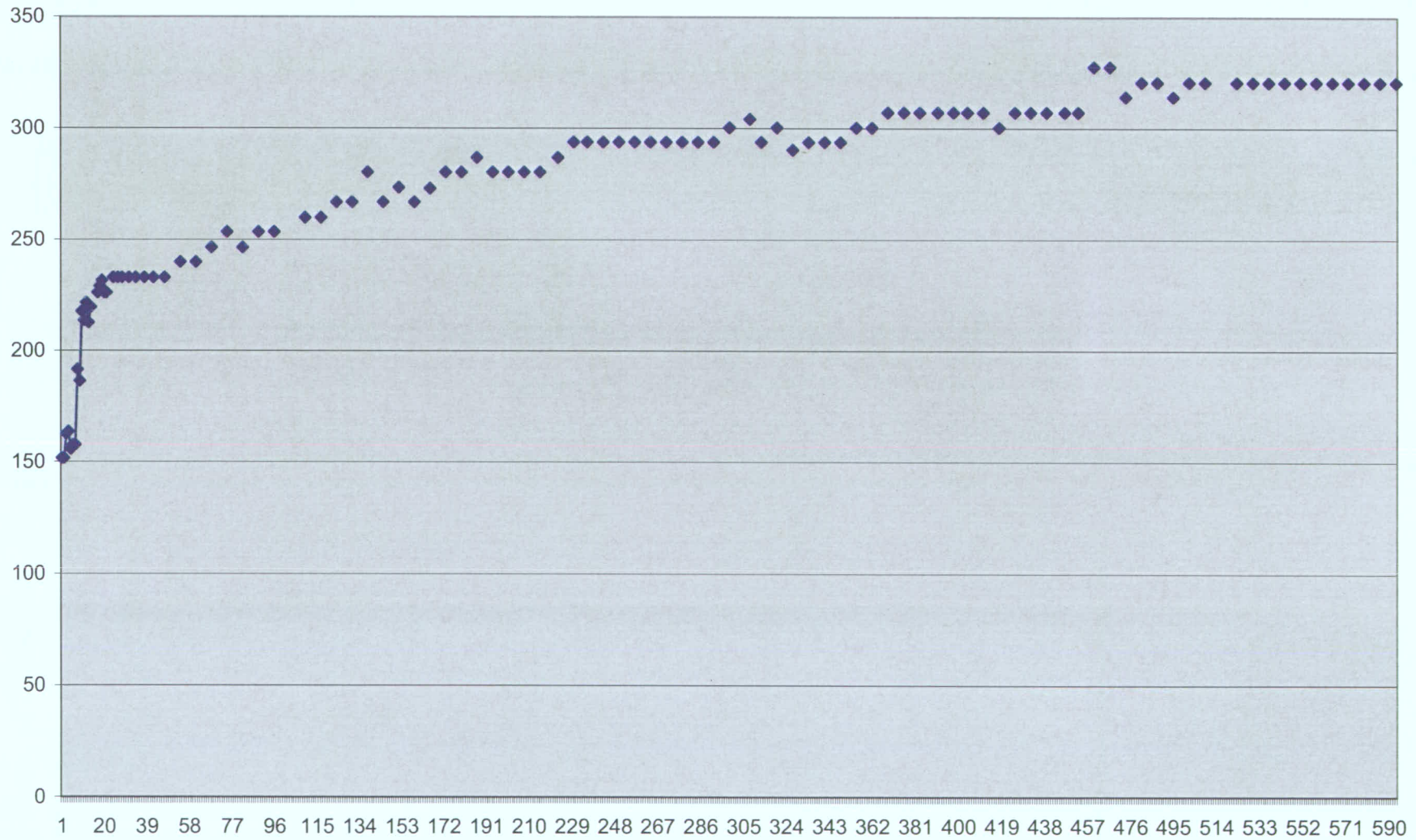
Rohr 09-10



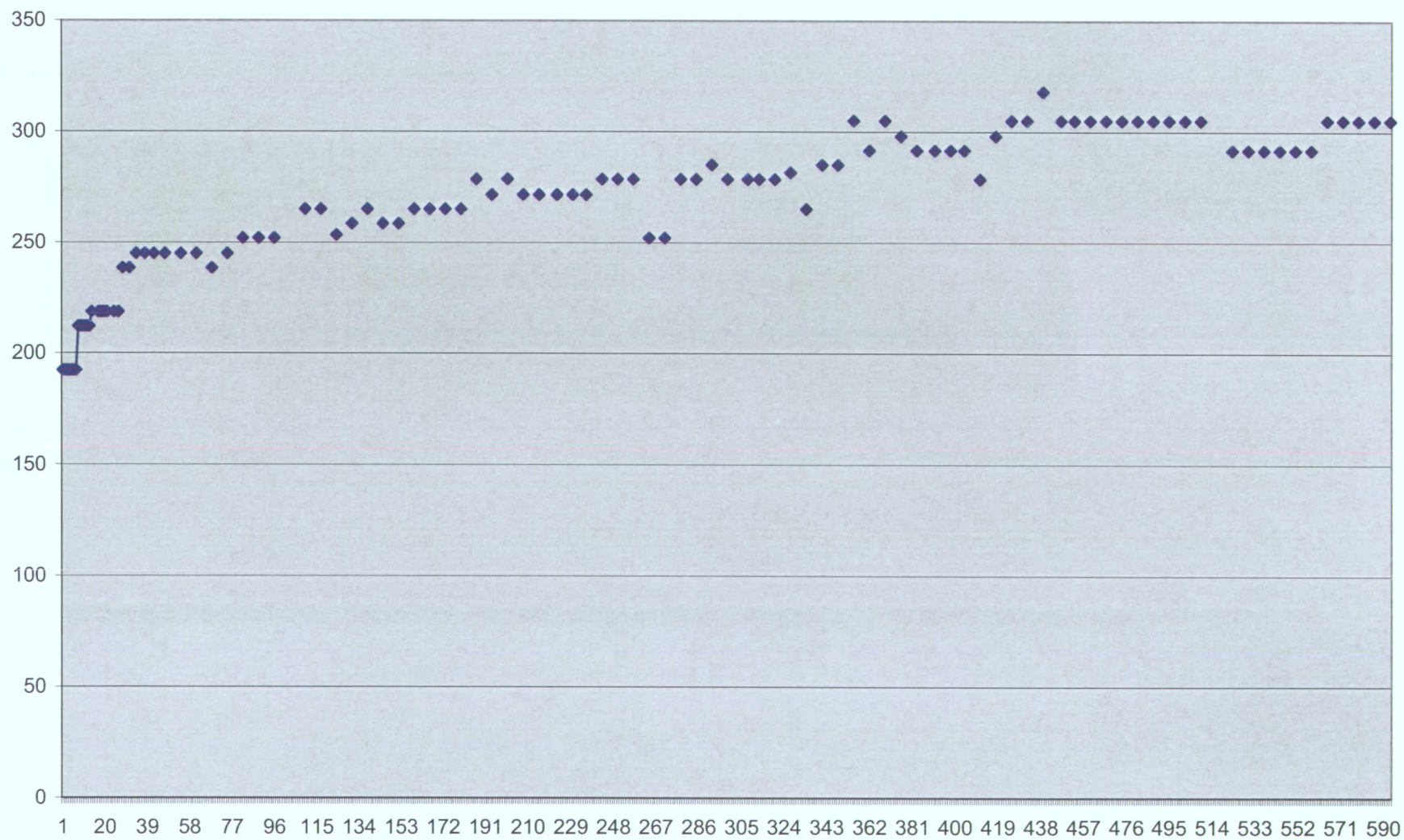
State 36-02



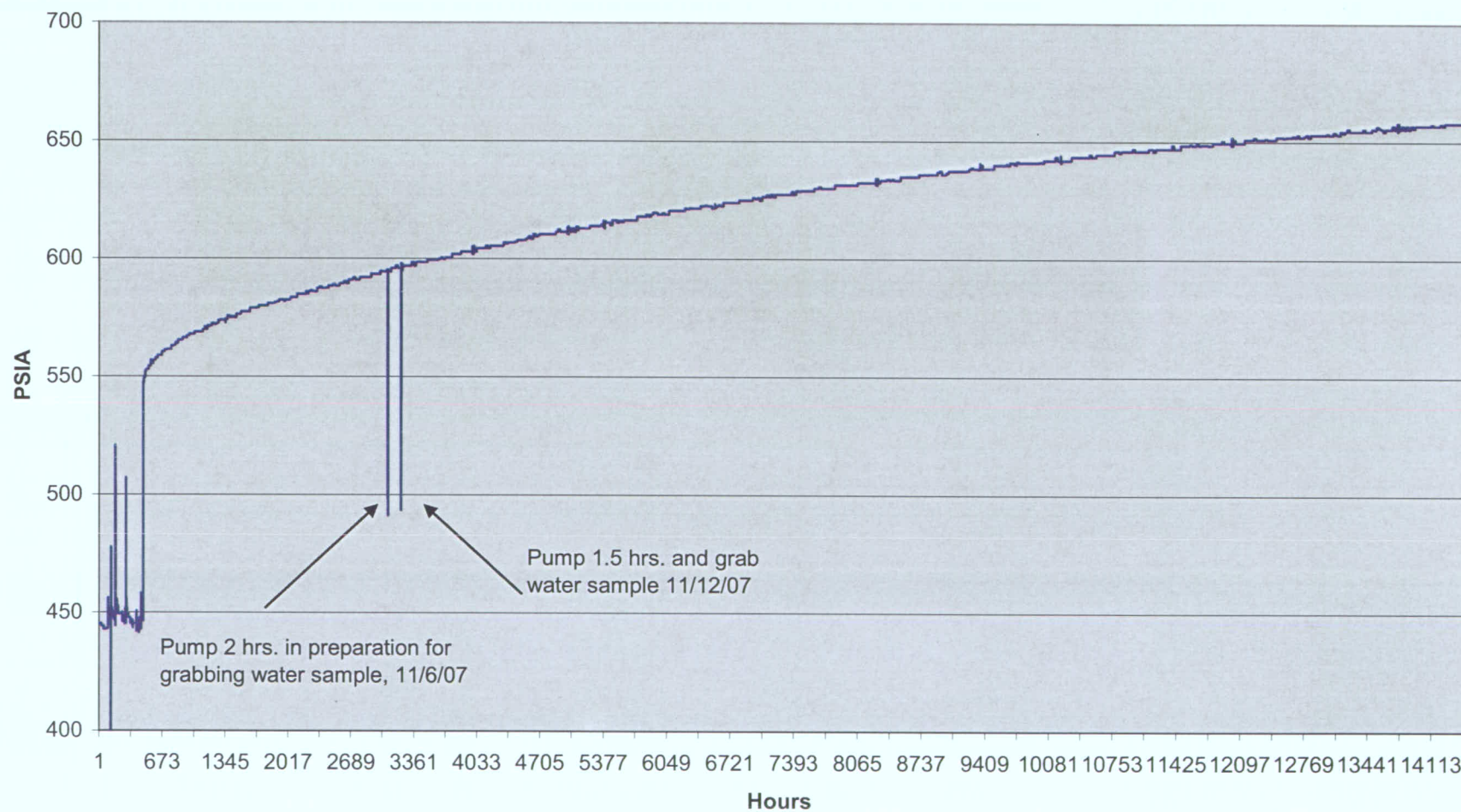
State 36-05



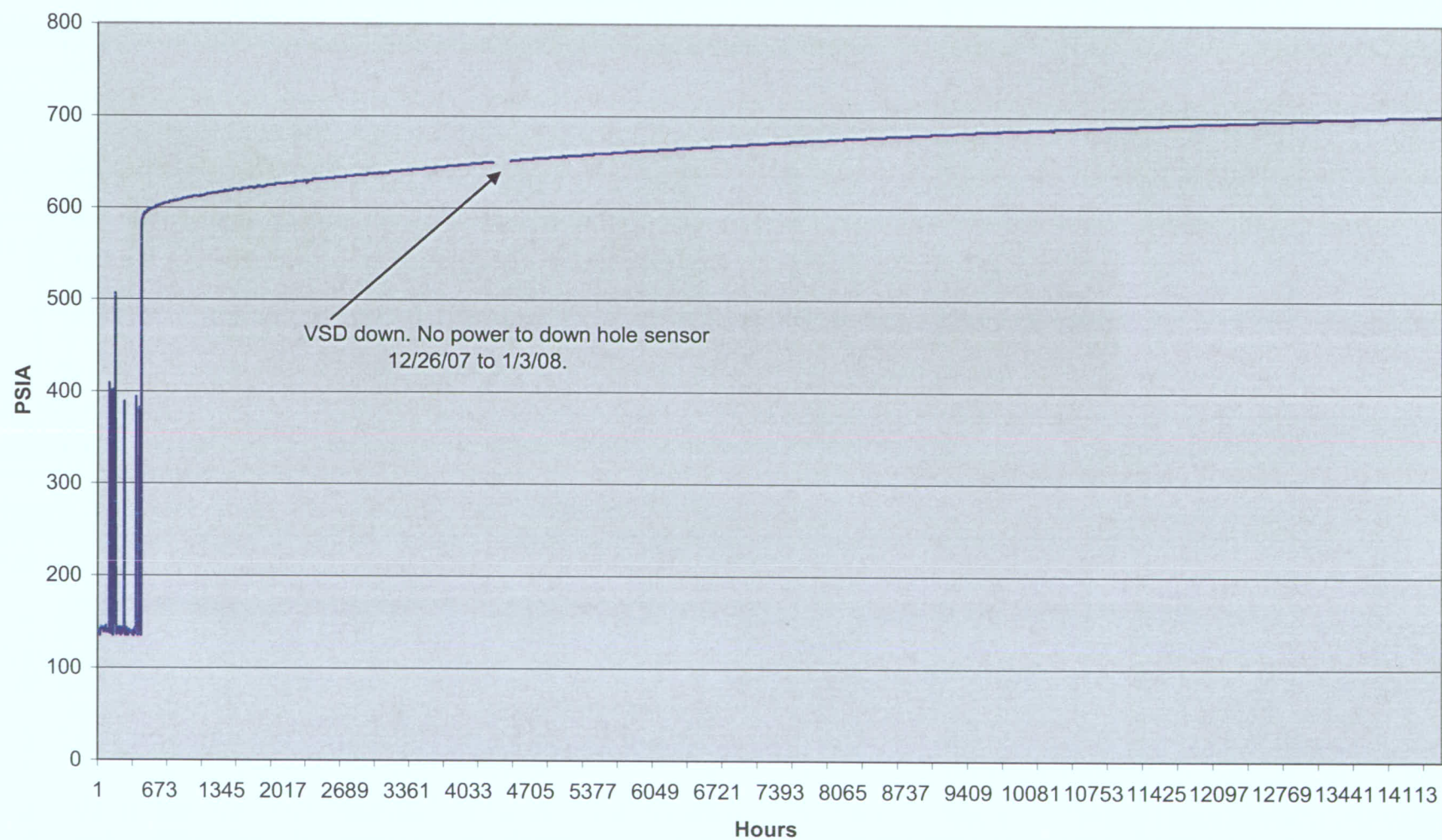
State 36-11



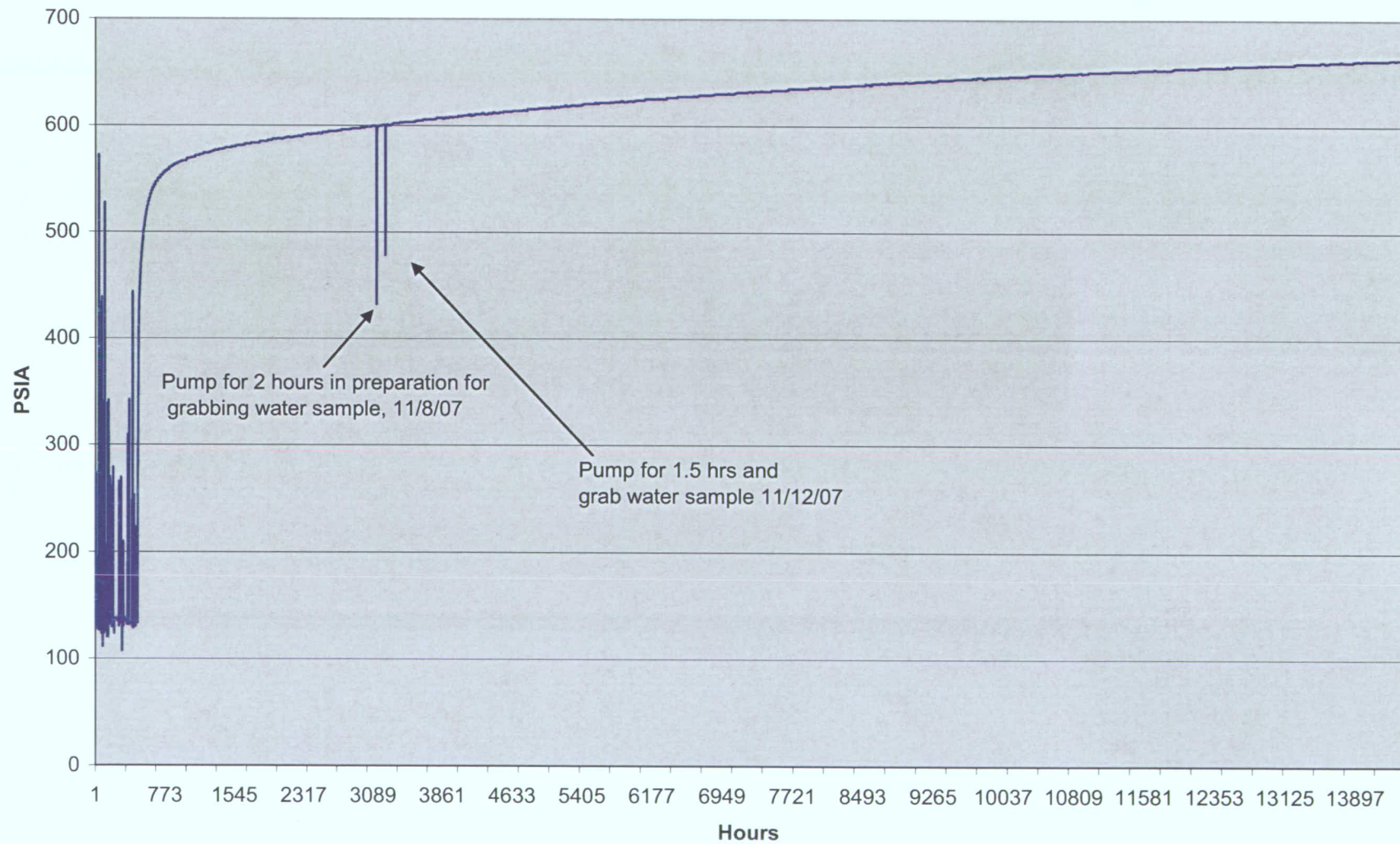
Rohr 04-14 PBU
from 7/1/07 to 2/23/09



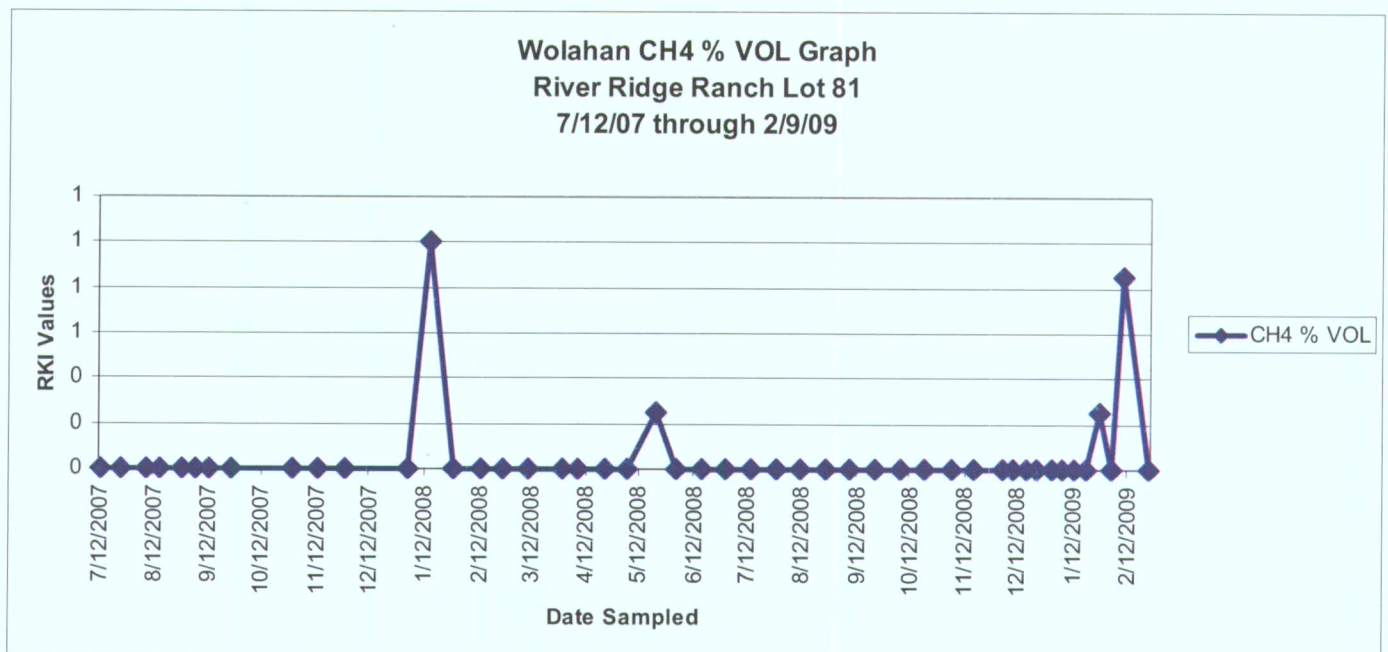
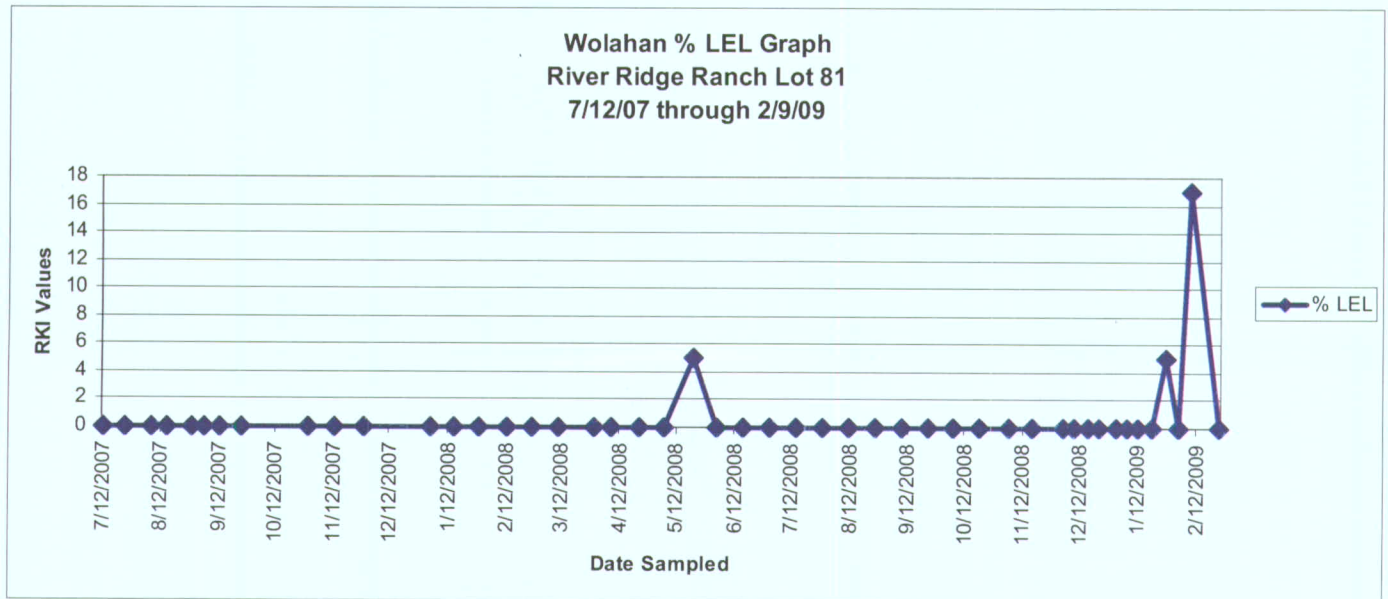
Rohr 08-01 PBU
from 7/1/07 to 2/23/09



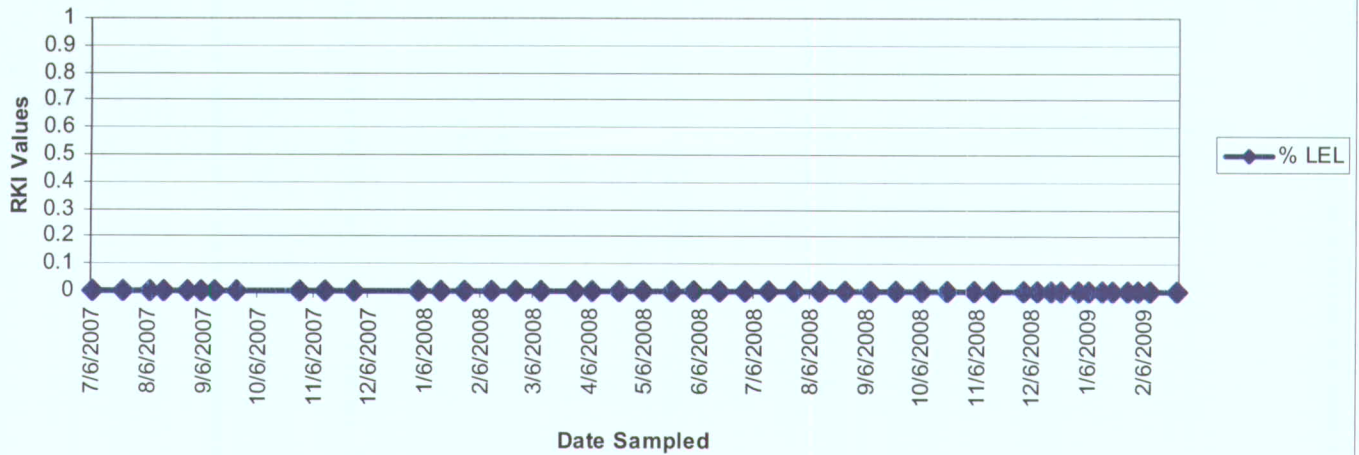
Rohr 09-04 PBU data (psia) 7/1/07 to 2/23/09



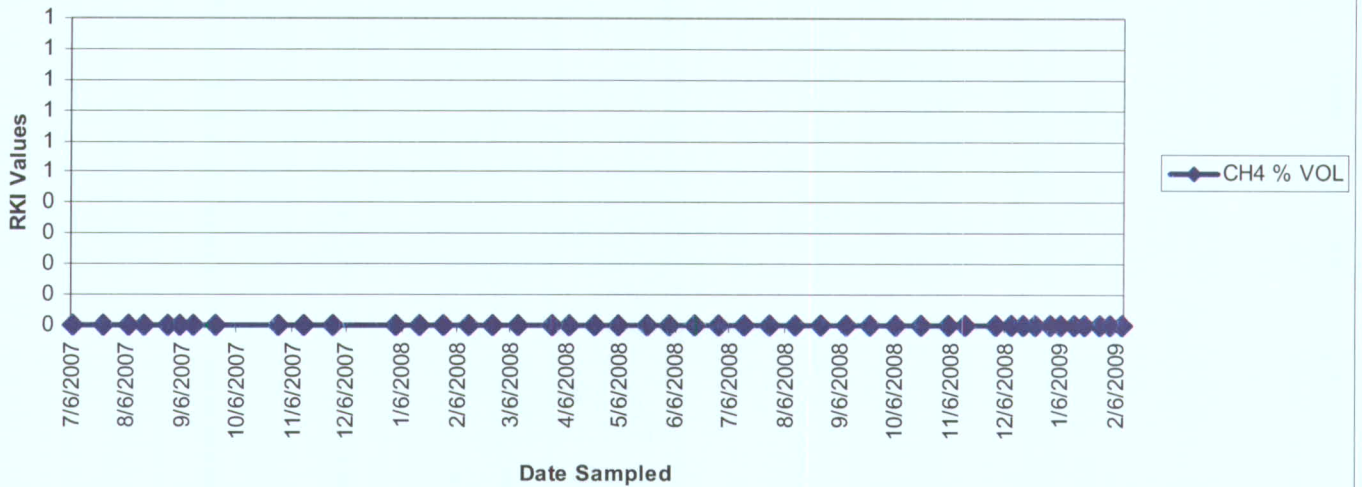
Attachment 5
Gas Concentrations in
Private Water Wells near the Mitigation Project

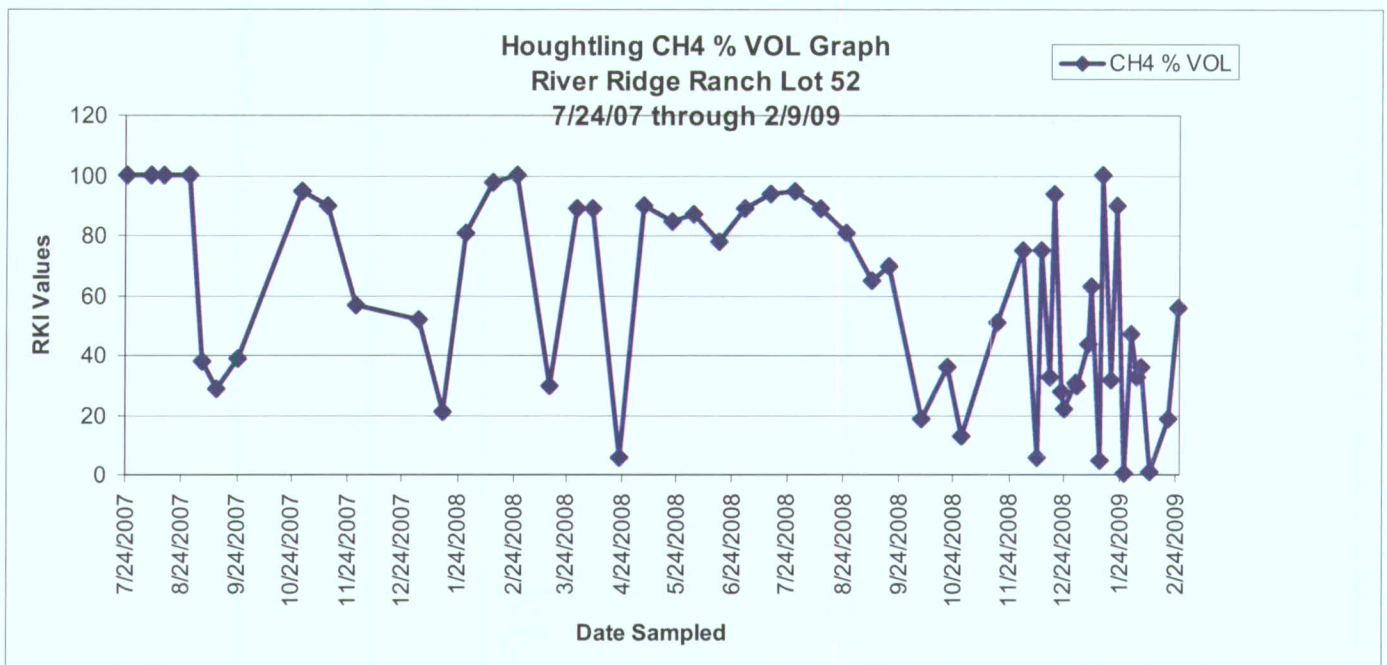
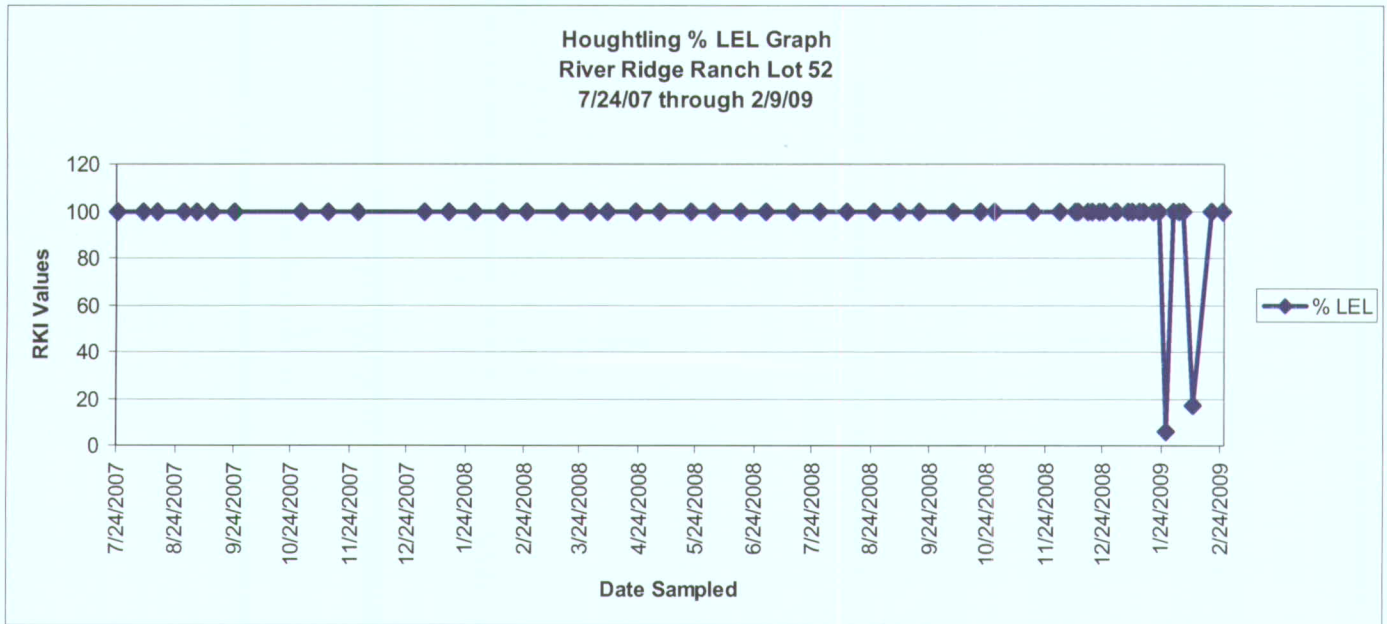


McPherson % LEL Graph
7/6/07 through 2/9/09

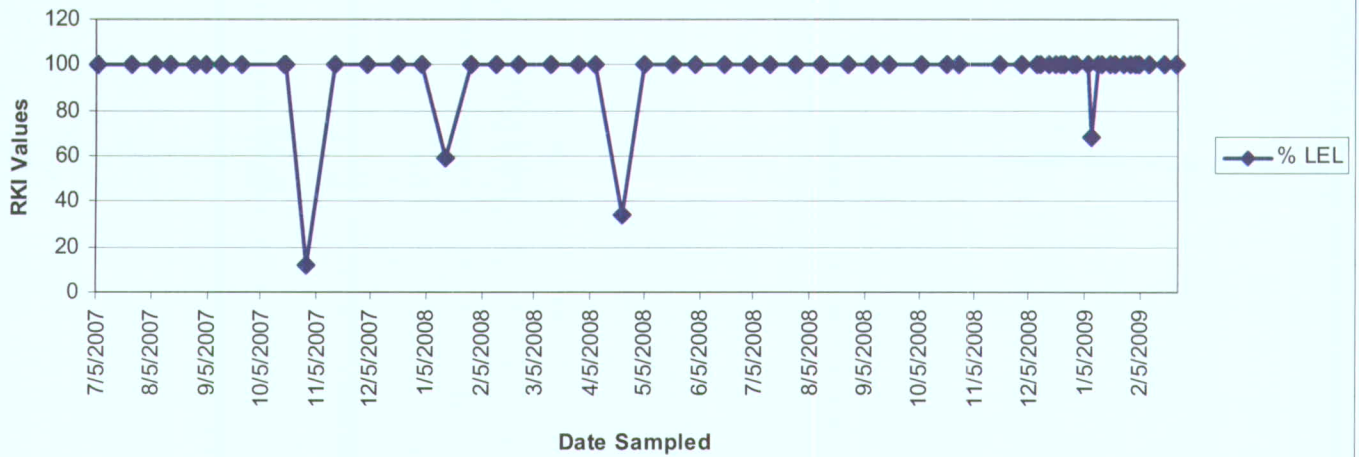


McPherson CH4 % VOL Graph
7/6/07 through 2/9/09



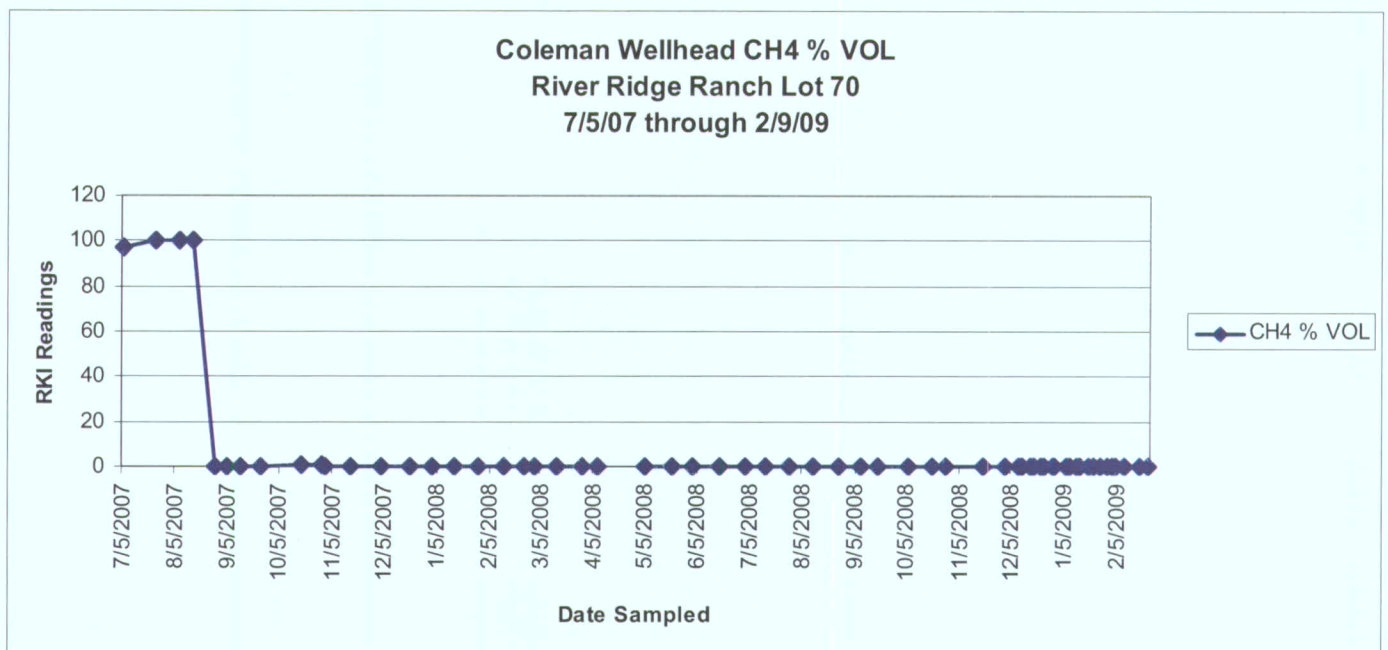
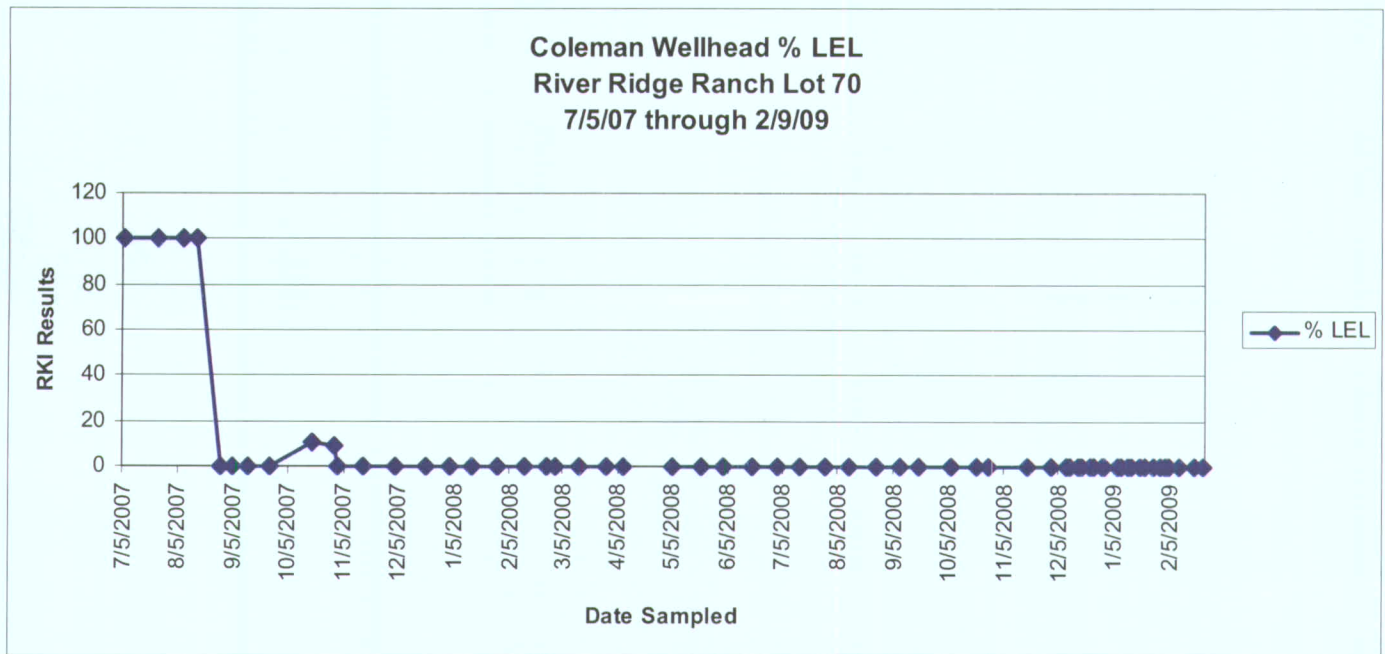


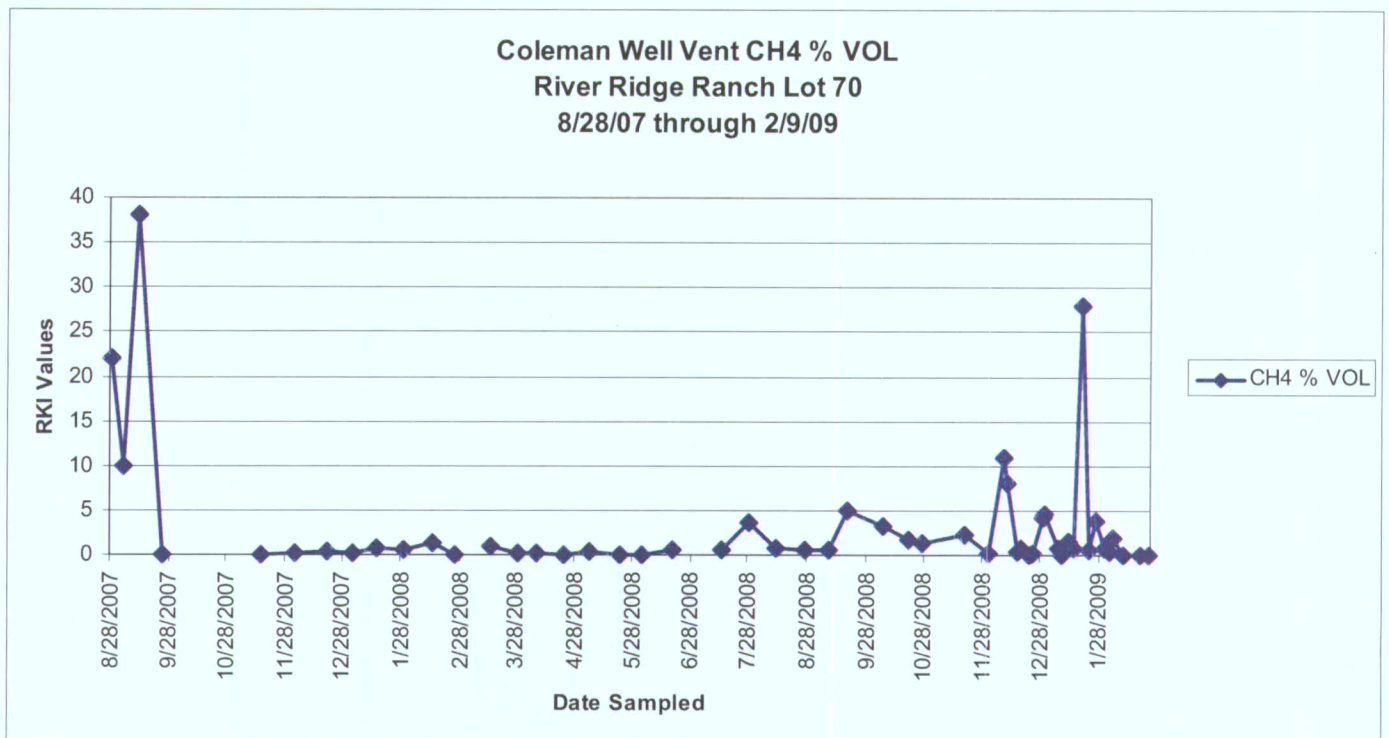
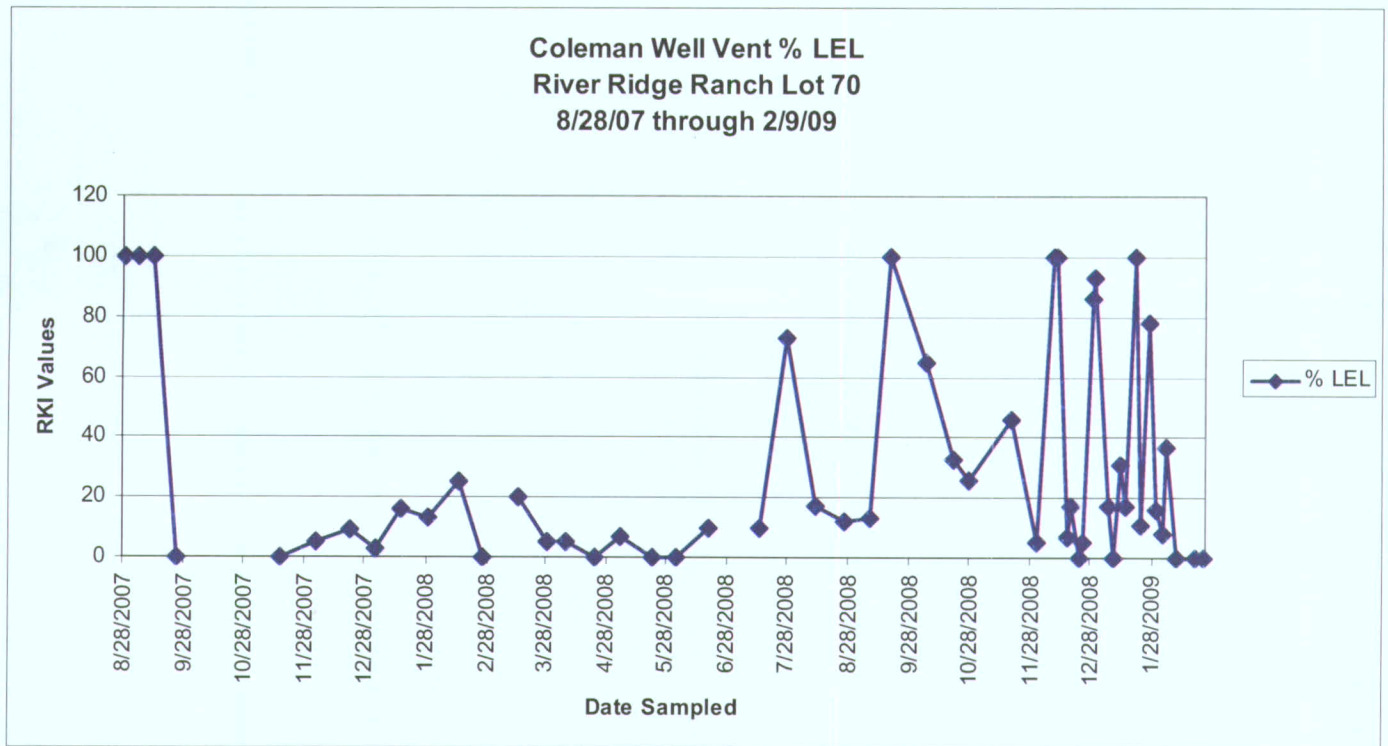
Hopke % LEL Graph
River Ridge Ranch Lot 68
7/5/07 through 2/9/09

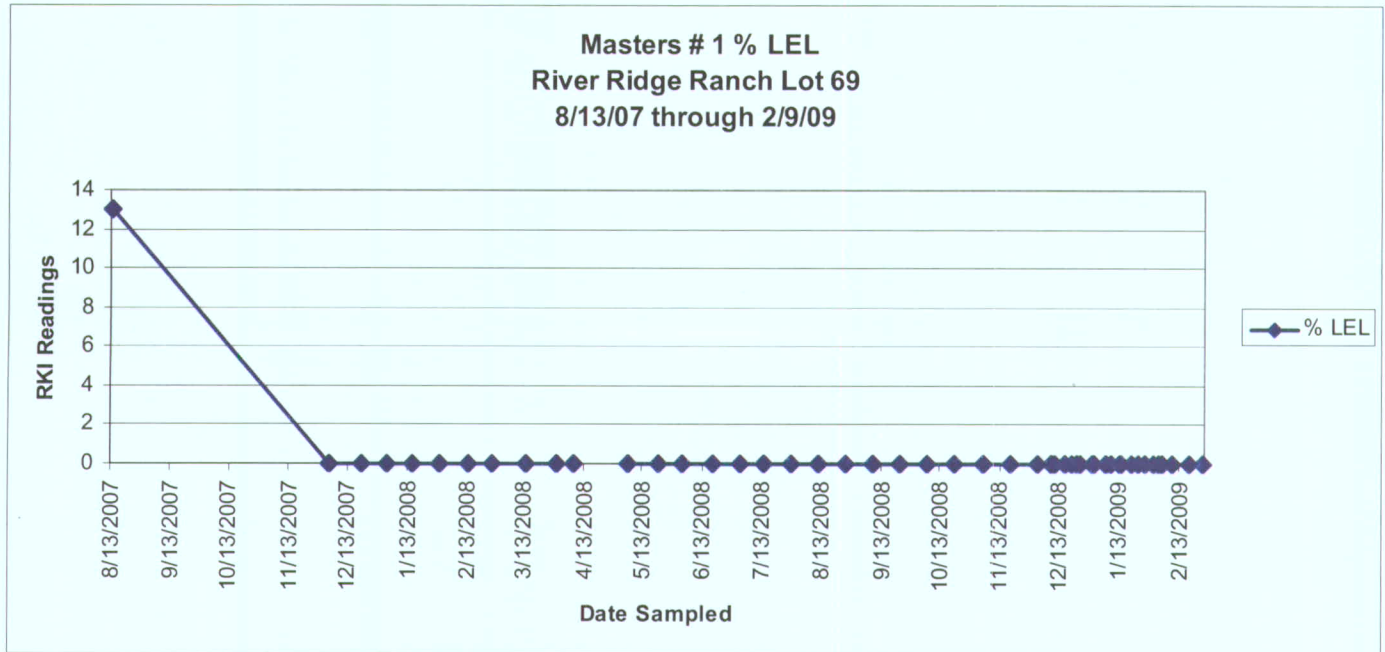


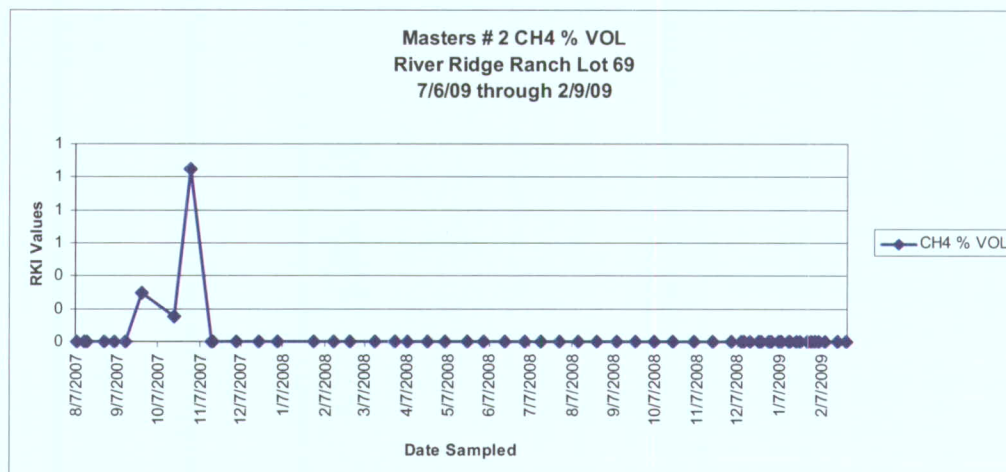
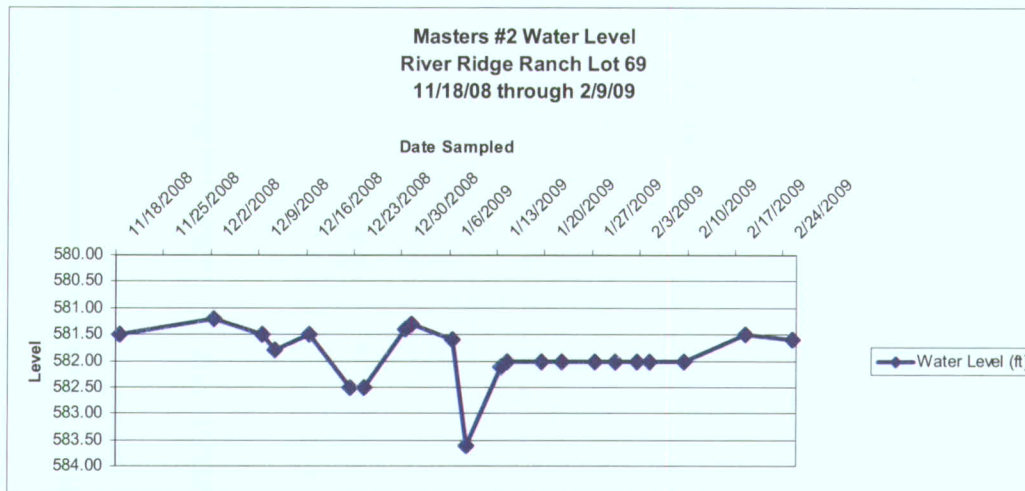
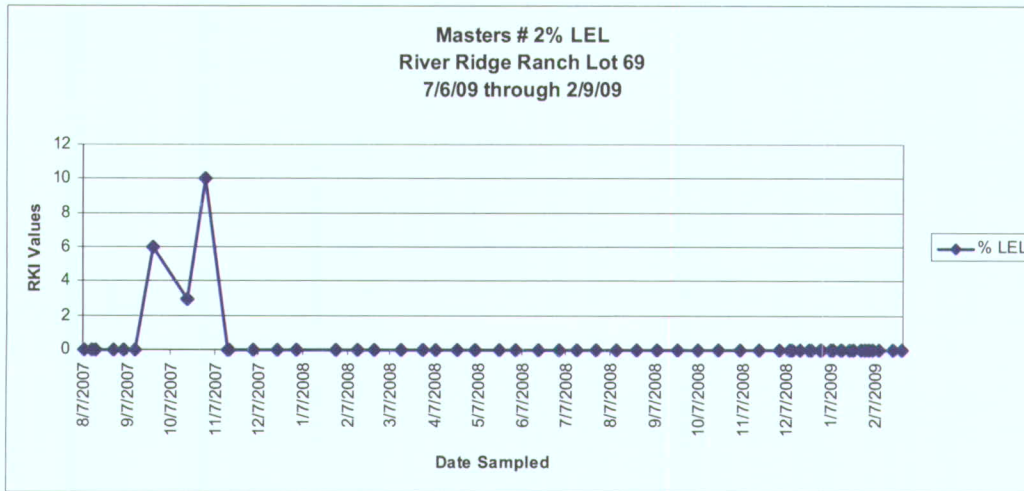
Hopke CH4 % VOL Graph
River Ridge Ranch Lot 68
7/5/07 through 2/9/09

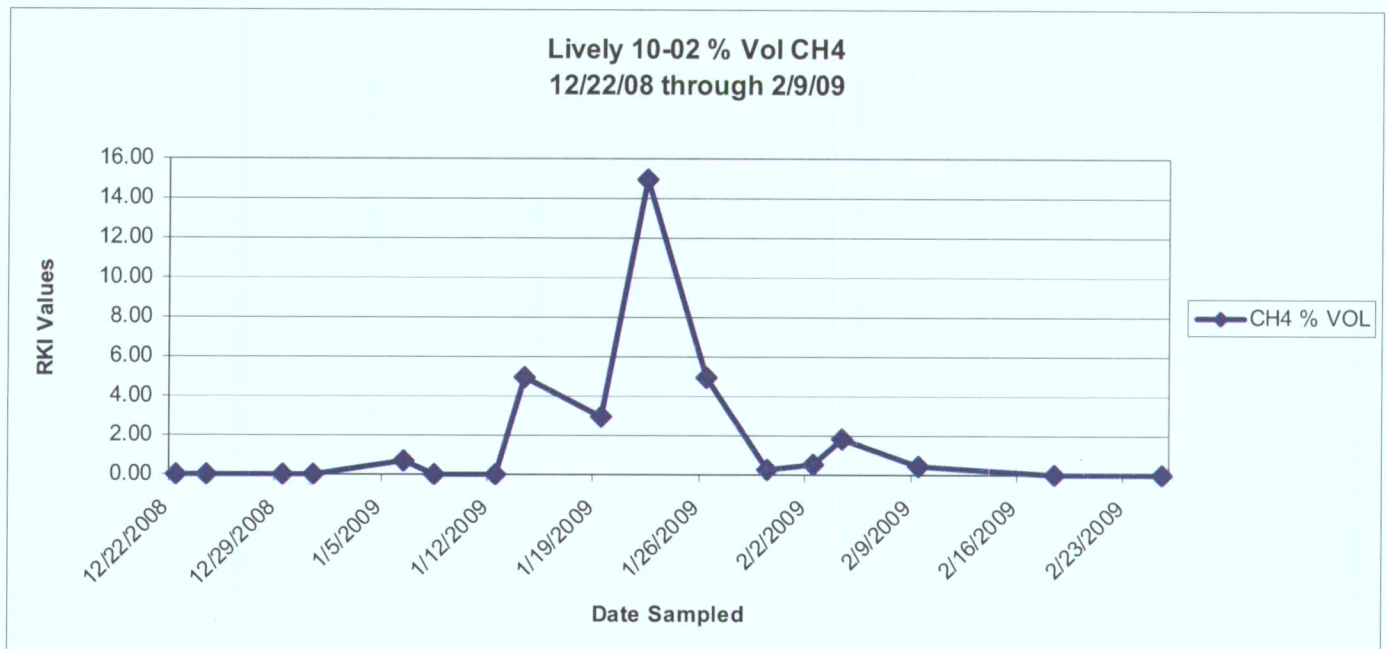
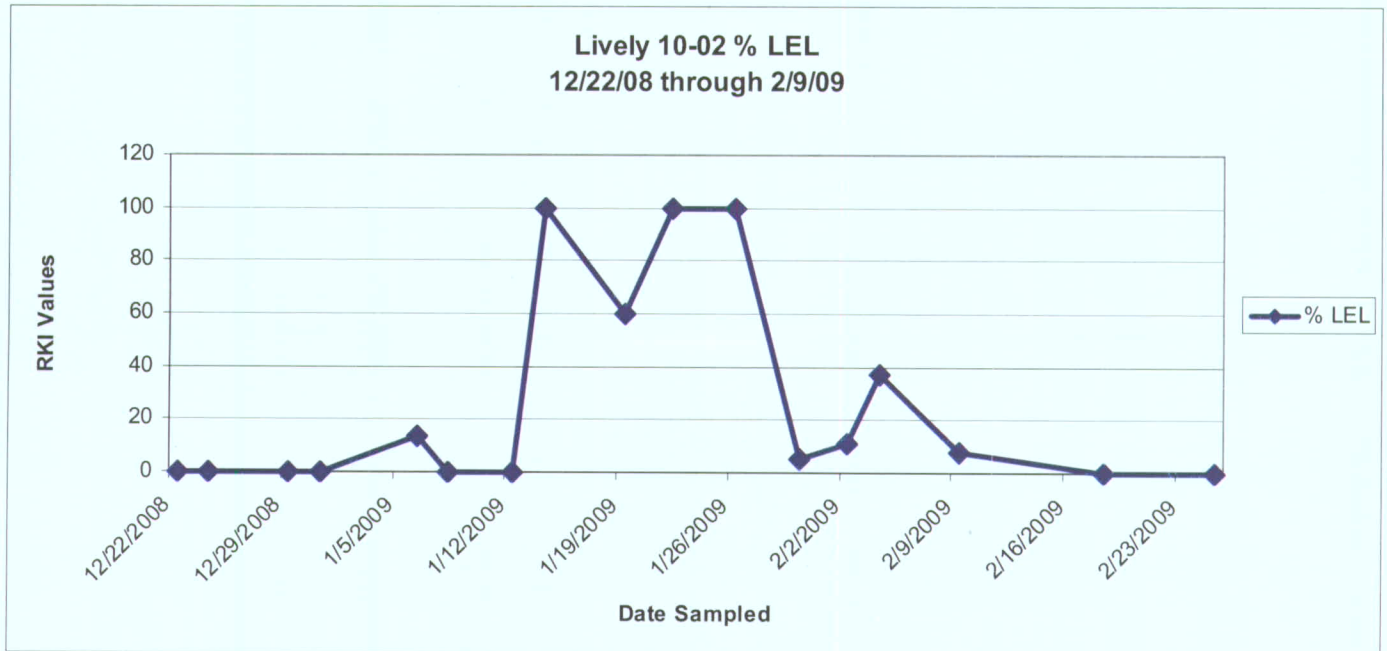




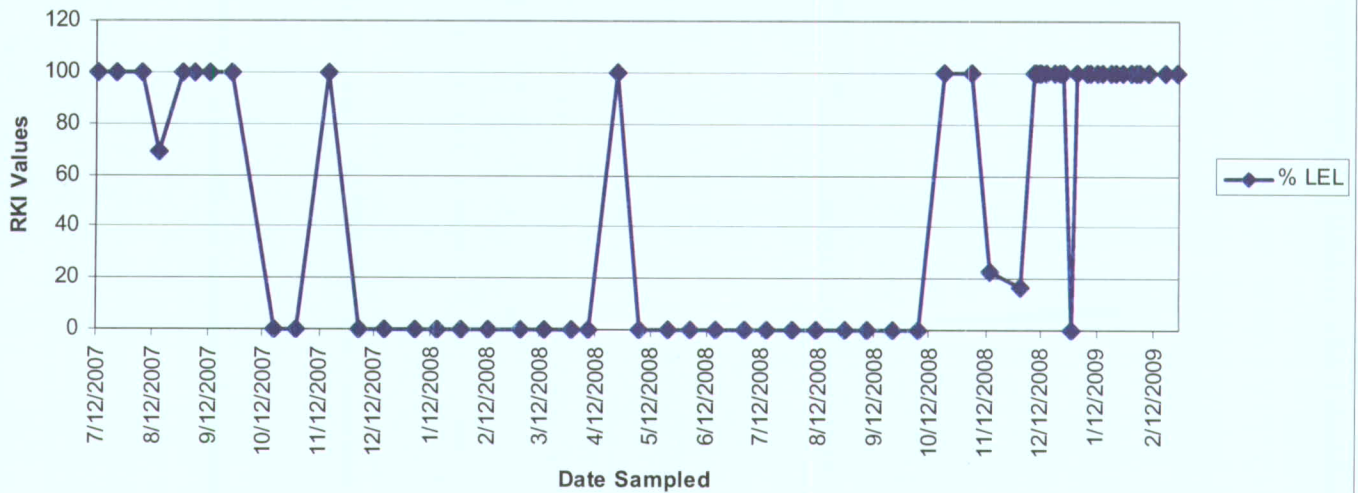








Golden Cycle Land (Goemmer 1) % LEL
7/12/07 through 2/9/09



Golden Cycle Land (Goemmer# 1) CH4 % VOL
7/12/07 through 2/9/09

