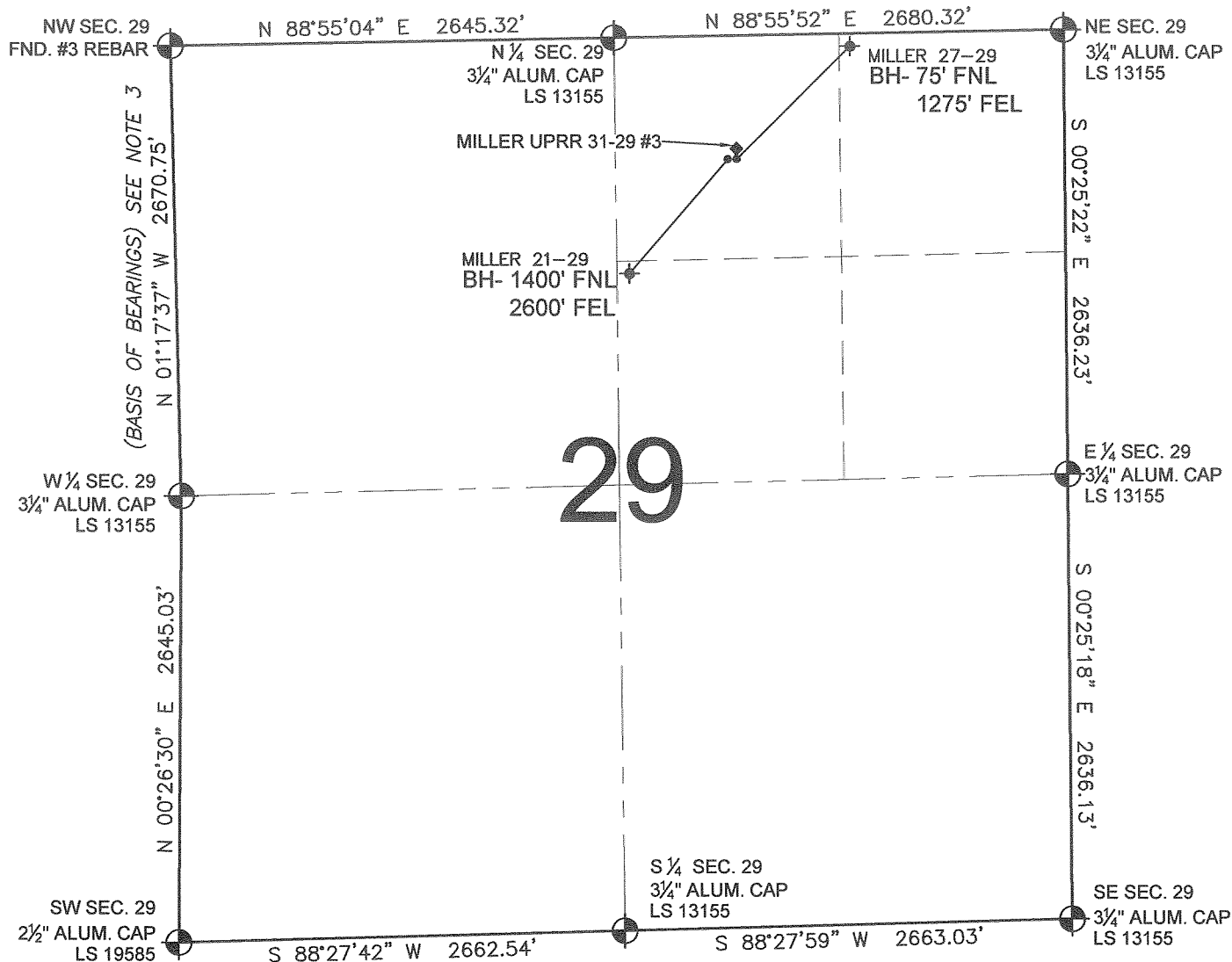


PAD DRAWING-NWNE SEC. 29

SECTION 29, TOWNSHIP 3 NORTH, RANGE 66 WEST, 6TH P.M.



LEGEND

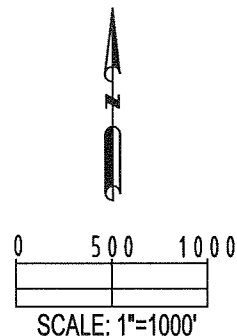
- = EXISTING MONUMENT
 = PROPOSED WELL
 = BOTTOM HOLE
 BH= BOTTOM HOLE
 = EXISTING WELL


NOTES:

- MILLER 27-29 TO BE AT 732' FNL, 1980' FEL.
 BOTTOM HOLE AT 75' FNL & 1275' FEL.
 MILLER 21-29 TO BE AT 732' FNL, 2010' FEL.
 BOTTOM HOLE AT 1400' FNL & 2600' FEL.
 MILLER UPRR 31-29 #3 IS AT 684' FNL, 1980' FEL.

NOTES:

- THIS SURVEY WAS DONE BY GPS METHODS AND CONFORMS TO THE MINIMUM STANDARDS SET BY THE C.O.G.C.C., RULE NO. 215 (PDOP VALUE IS LESS THAN 6.0, LATITUDE AND LONGITUDE ARE ACCURATE TO 5 DECIMAL PLACES, AND GPS OBSERVATIONS ARE DIFFERENTIAL AND DONE BY QUALIFIED PERSONNEL.)
- ELEVATIONS SHOWN AT THE WELL HEAD, AS WELL AS HORIZONTAL CONTROL, ARE BASED ON GPS-RTK VALUES DERIVED FROM DOING 2-HOUR STATIC GPS SESSIONS AND REDUCTIONS USING O.P.U.S. SOLUTIONS.
VERTICAL = NAVD88; HORIZONTAL = NAD83/92
- THE BEARINGS SHOWN HEREON ARE BASED ON GPS OBSERVATIONS BETWEEN THE MONUMENTS SHOWN HEREON AS FOUND ON THE FIELD DATE BELOW.
- DISTANCES SHOWN ARE AT GROUND LEVEL, AS MEASURED IN THE FIELD, WITH TIES TO WELLS MEASURED AT A PERPENDICULAR TO SECTION LINES.



| REVISIONS | | PREPARED BY: |  Petroleum Field Services, LLC 1801 W. 13th Ave. Denver, CO 80204 |
|-----------|------|--------------|---|
| INITIAL | DATE | | |
| | | | |
| | | | |
| | | | |
| | | | |
| | | | |
| | | | |

KERR-MCGEE OIL & GAS ONSHORE LP

FIELD DATE:
03-06-09

WELL NAME:
MILLER 21-29, MILLER 27-29

DRAWING DATE:
03-12-09

SURFACE LOCATION:

BY:
CP

WELD COUNTY, COLORADO
NW 1/4 NE 1/4, SEC. 29, T3N, R66W