

JW WIRELINE COMPANY

CEMENT BOND LOG
GR CCL
VDL

Company ROSETTA RESOURCES OPERATING, LP
Well CHAPMAN 22-12
Field WILDCAT
County YUMA
State COLORADO

Location: 2451' FSU & 651' FWL
API #: 05-125-11433
Other Services PERP

SEC 22 TWP 1S RGE 44W
Permament Datum GUL Elevation 3657
Log Measured From KB
Drilling Measured From KB
Elevation K.B. 3669
D.F. 3668
G.L. 3657

Date DECEMBER 12, 2008
Run Number 1
Depth Chiller 2535
Depth Logger 2427
Bottom Logger 2425
Top Log Interval 4390
Open Hole Size 4.25
Water
Depth / Viscosity
Max. Recorded Temp. 1460
Estimated Cement Top ROA

Time Well Ready
Time Logger on Bottom
Equipment Number 480
Location YUMA
Recorded By BRADY DULKA
Witnessed By RICK KING
Borehole Record
Run Number Bit From To Size Weight From To
Casing Record Size Weight From To
Surface String
Production String
Liner

<<< Fold Here >>>

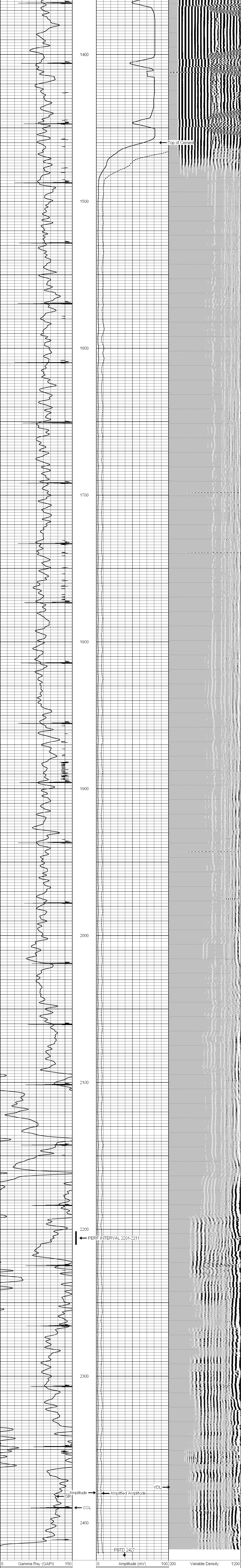
All interpretations are opinions based on inferences from electrical or other measurements and we cannot and do not guarantee the accuracy or correctness of any interpretation, and we shall not, except in the case of gross or willful negligence on our part, be liable or responsible for any loss, costs, damages, or expenses incurred or sustained by anyone resulting from any interpretation made by any of our officers, agents or employees. These interpretations are also subject to our general terms and conditions set out in our current Price Schedule.

Comments

THANK YOU FOR CHOOSING JW WIRELINE
DEPTH REFERENCE TO DUAL INDUCTION DATED NOVEMBER 24, 2008
PERF INTERVAL 2201-2211 10' 4 SPF

Database File: chapman 22-12.db
Dataset Pathname: pass1
Presentation Format: cbk
Dataset Creation: Fri Dec 12 12:08:12 2008 by Log Std Casedhole 07122
Charted by: Depth in Feet scaled 1:240

0 Gamma Ray (GAPI) 150
9 CCL -1
0 Amplitude (mV) 100 200 Variable Density 1200
0 Amplified Amplitude (mV) 30



0 Gamma Ray (GAPI) 150
9 CCL -1
0 Amplitude (mV) 100 200 Variable Density 1200
0 Amplified Amplitude (mV) 30