

## Chevron Marathon 41A-22D Original Completion Summary

The Chevron Marathon 41A-22D completion operations began January 25, 2008. A Cement Bond Log (CBL/RAL) was used to locate top of cement with a minimum 60 % bond located at 5310'. The criteria used for this determination is minimum 10' net of less than or equal to 9.8 mV response from the XAMP (**Figure 1**).

Before perforating the 4-1/2" casing a pressure test was preformed to ensure integrity. The lubricator, frac tree, and casing was pressured up to 5200 psig and held. A total of seven stages are stimulated from 7164' to 8825' with a composite bridge plug set between stages (**Figure 2**). While pumping Stage 7 a pressure transducer (and pop-off) is placed on the 4-1/2" x 9-5/8" annuli as a safety precaution during stimulation operations. This data is captured during the treatment in the event we unexpectedly break-through the top cement barrier (**Figure 3**). The annulus pressure, axis D, shows that during the Stage 7 stimulation, the 4-1/2" x 9-5/8" annuli varied between 3 psig (max) and 1 psig (min) accounting for expansion and contraction of the casing caused by the treating pressure on the casing and the stimulation fluids decreasing the casing temperature. The casing was most likely not entirely full evident by the trivial pressure fluctuations.

On 03/21/2008 after Stage 7 was complete a top plug was set above the perforations at 7060'. The plug was pressure tested at 1000 psig for 5 minutes to confirm the isolation of the perforations below and casing integrity.

The Chevron-Marathon 41A-22D has had no well activity since 03/21/2008. All data collected during the completion operation concludes that the integrity of the 4-1/2" casing was never compromised and that there is very competent cement isolation between the top perforation (7164') and TOC (at <60%).

Created by : RAL, v4.8.007

Plotted by : PlotMgr, v5.4.504

Company : MARATHON

Well : CM #14D-14D

File Name : D:\WELLDATA\14RAD\MAIN1.XTF

Mode : PlotMgr 5.4.504

Interval : 3470.00 - 5005.00 feet UP

Created : 1/26/2008 11:09:28 AM

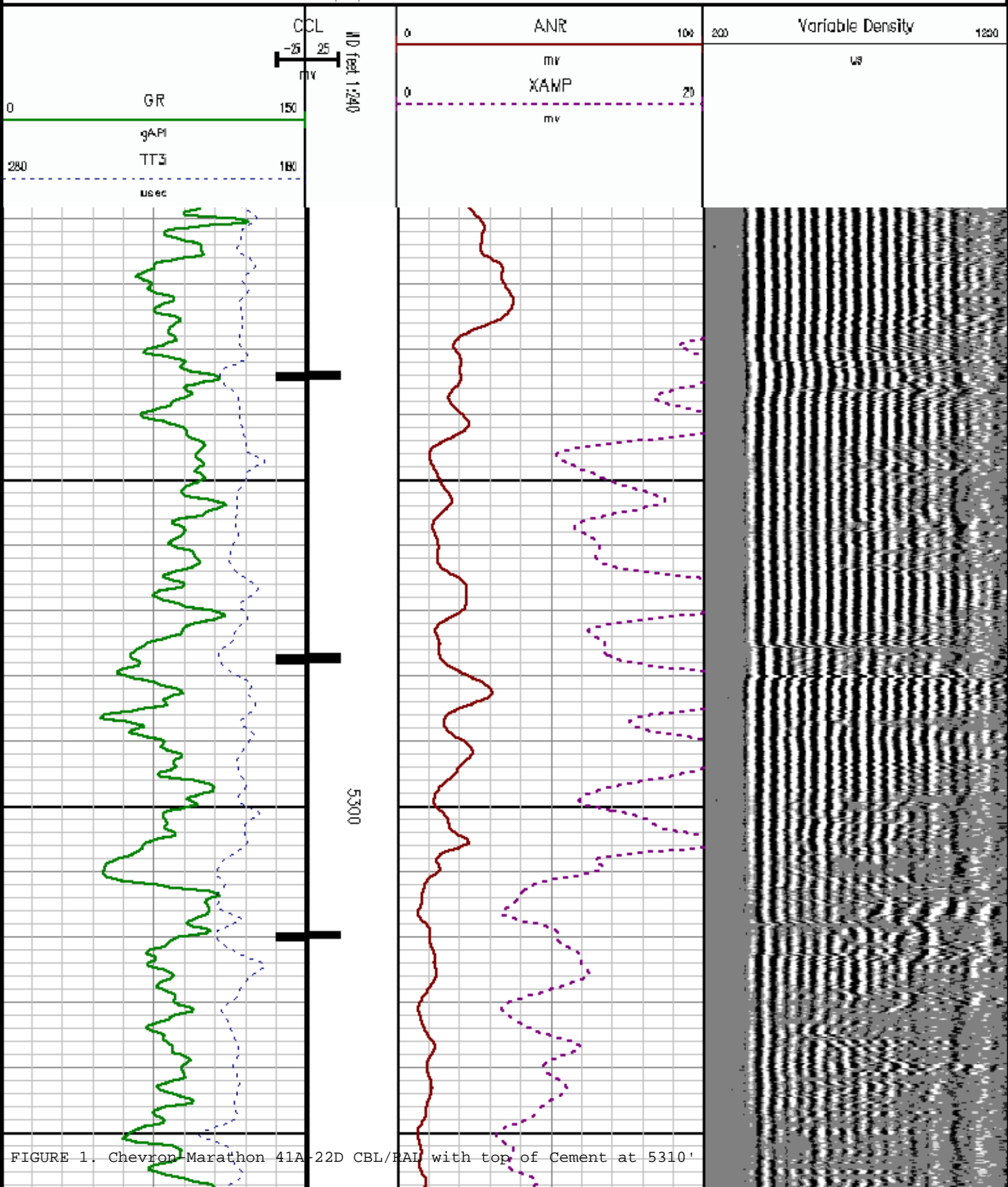


FIGURE 1. Chevron-Marathon 41A-22D CBL/RAL with top of Cement at 5310'



**Marathon  
Oil Company**

Updated: 7/1/2008

Well Name: Chevron Marathon 41A-22D

SAP CC :

Lat/Long:

Location: NW NW 523; T6S; R97W; 208' FNL & 432' FWL

County: Garfield County, Colorado

Field : Grand Valley

API #: 05-045-14441-00

WI:

Lease: 854500

NRI:

Permit: 20073853

Spud Date: 12/23/2007

GL: 8,498'

Completion:

KB: 8,516'

1st Flow :

ID: 20" 84# set @ 100'

ID: 9 5/8" 36# J-55 set @ 2898'

Cemented with class 'G' 1309 sx lead and 350 sx tail 11.6/14.2 ppg. Bumped plug with 1450 psi. Had cement returns to surface.

ID: 4 1/2" 11.6# M-80 set @ 9056'

Cemented with 800 sx BJS High Strength Lite Bumped plug with 1801 psi, float held

TOC w/ 60% bond @ 5310'

CBL: Baker Atlas  
26-Jan-08

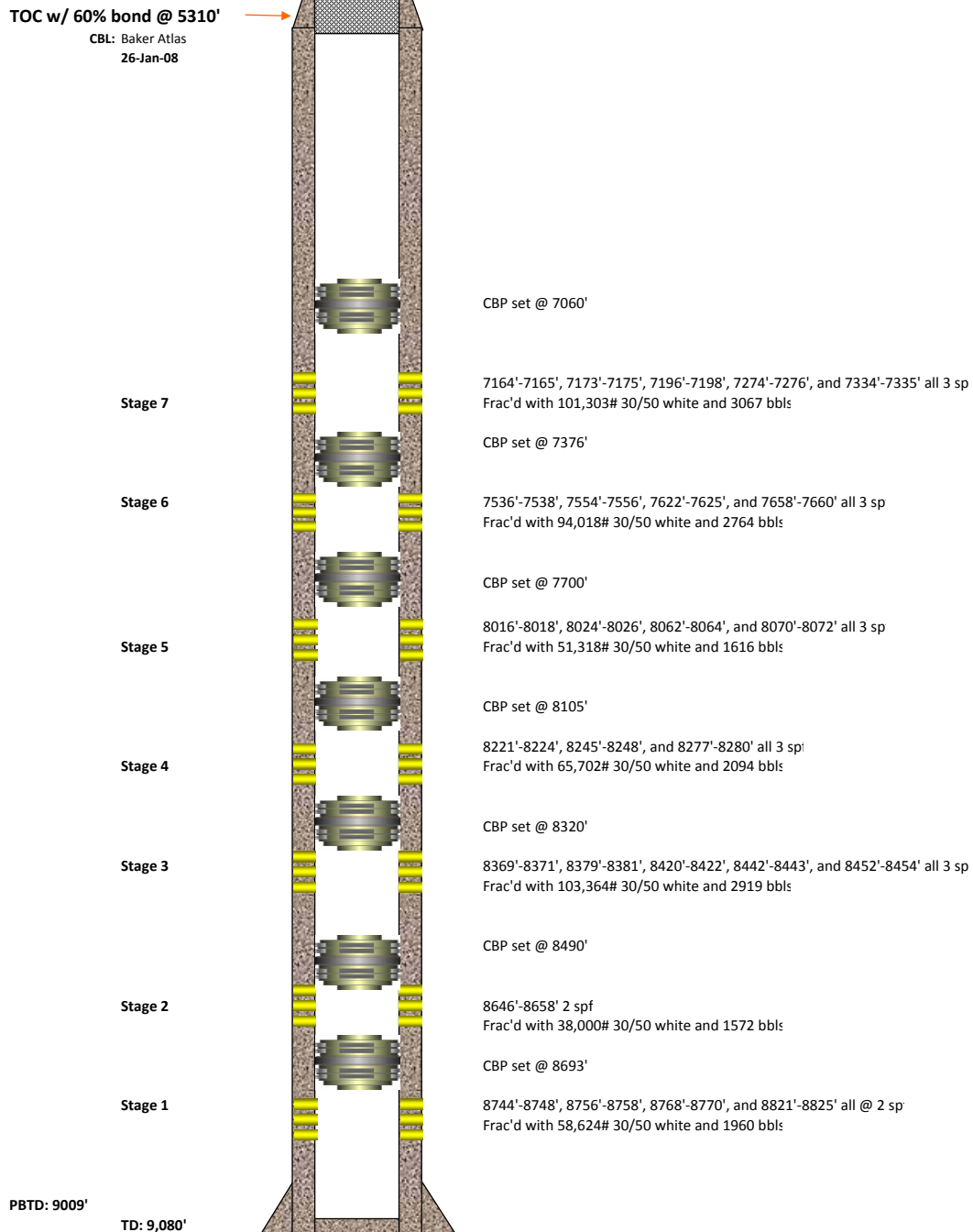


FIGURE 2. Chevron-Marathon 41A-22D Wellbore Schematic

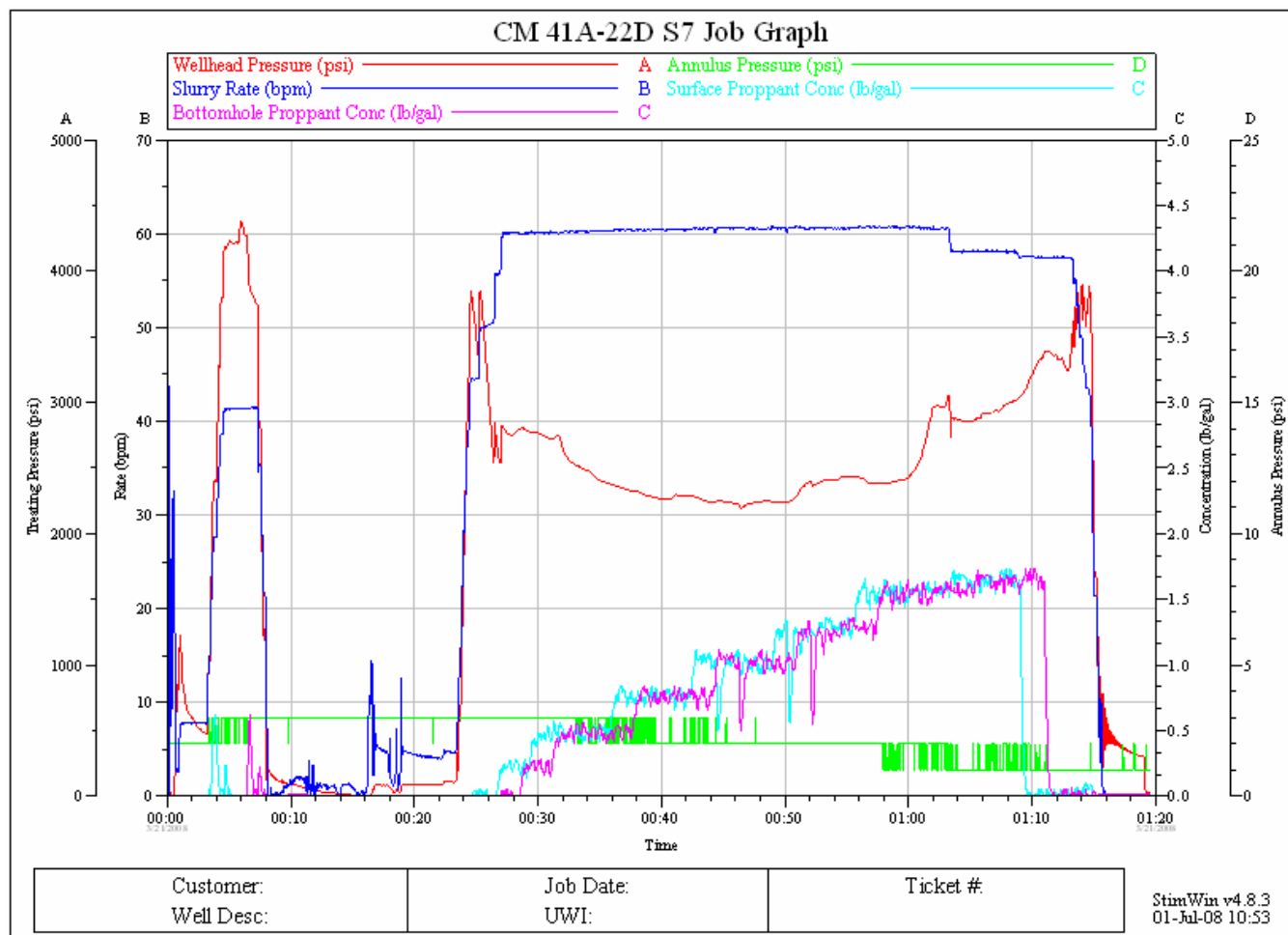


FIGURE 3. Chevron-Marathon 41A-22D recorded data from Stage 7 stimulation