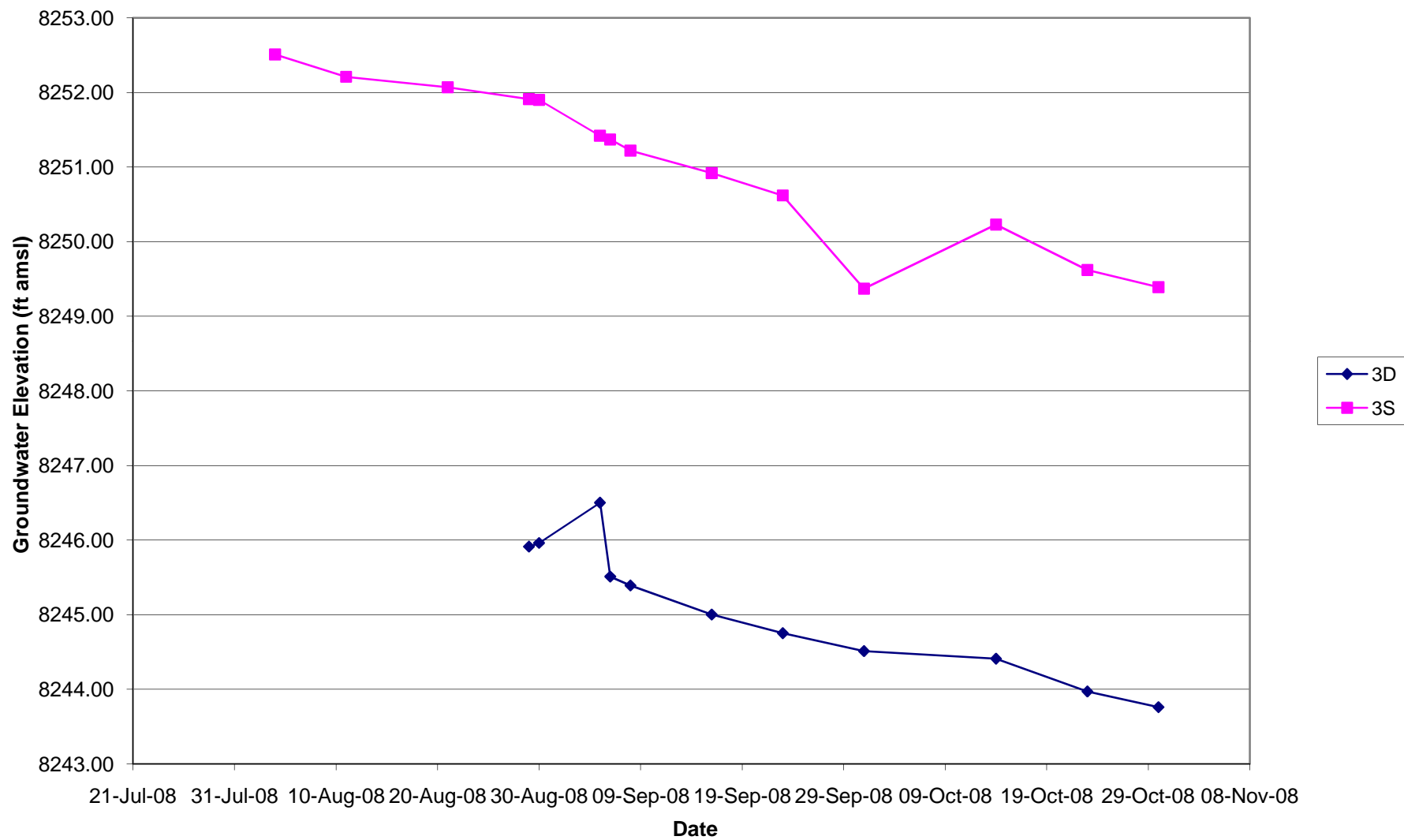
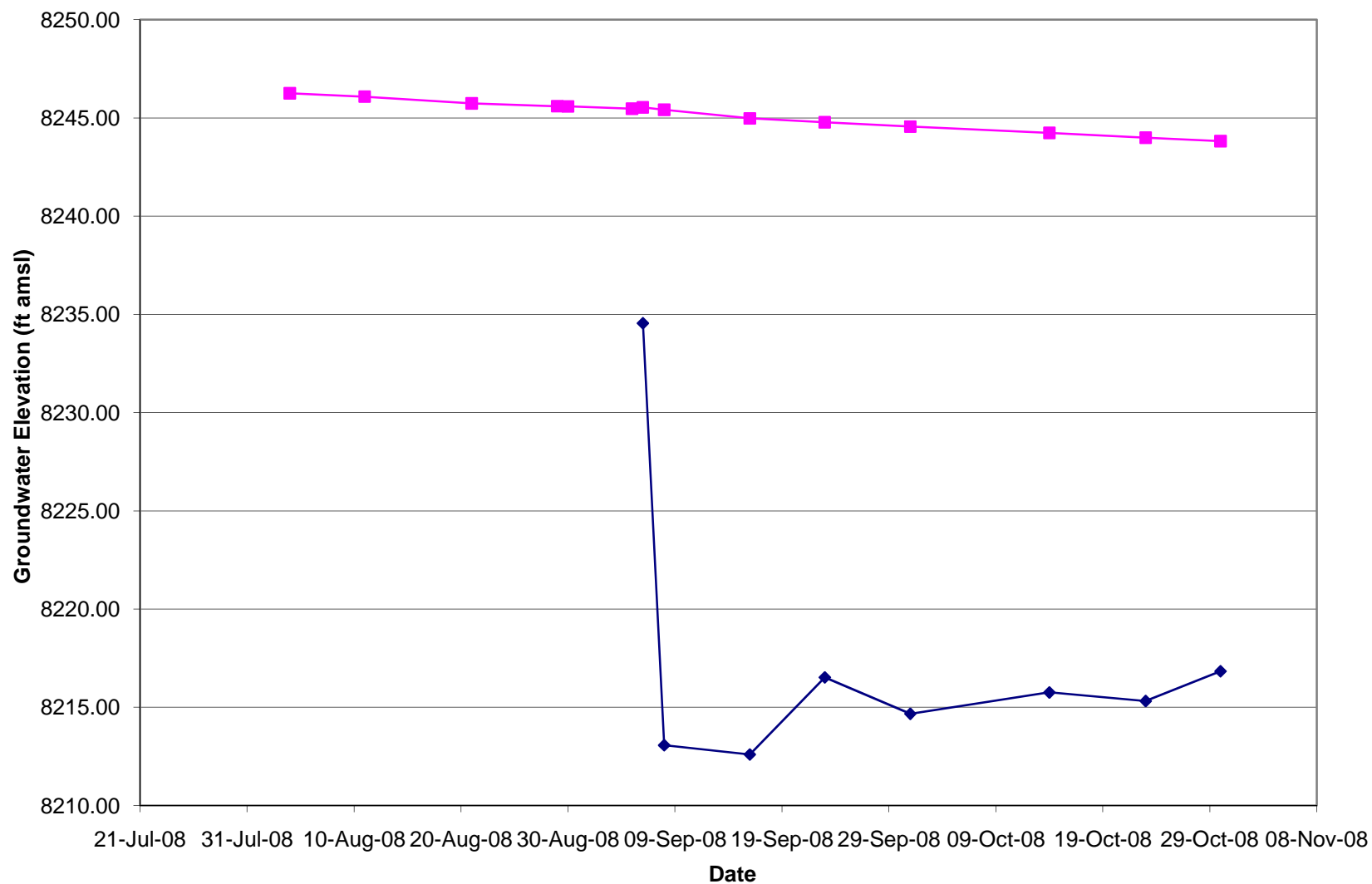


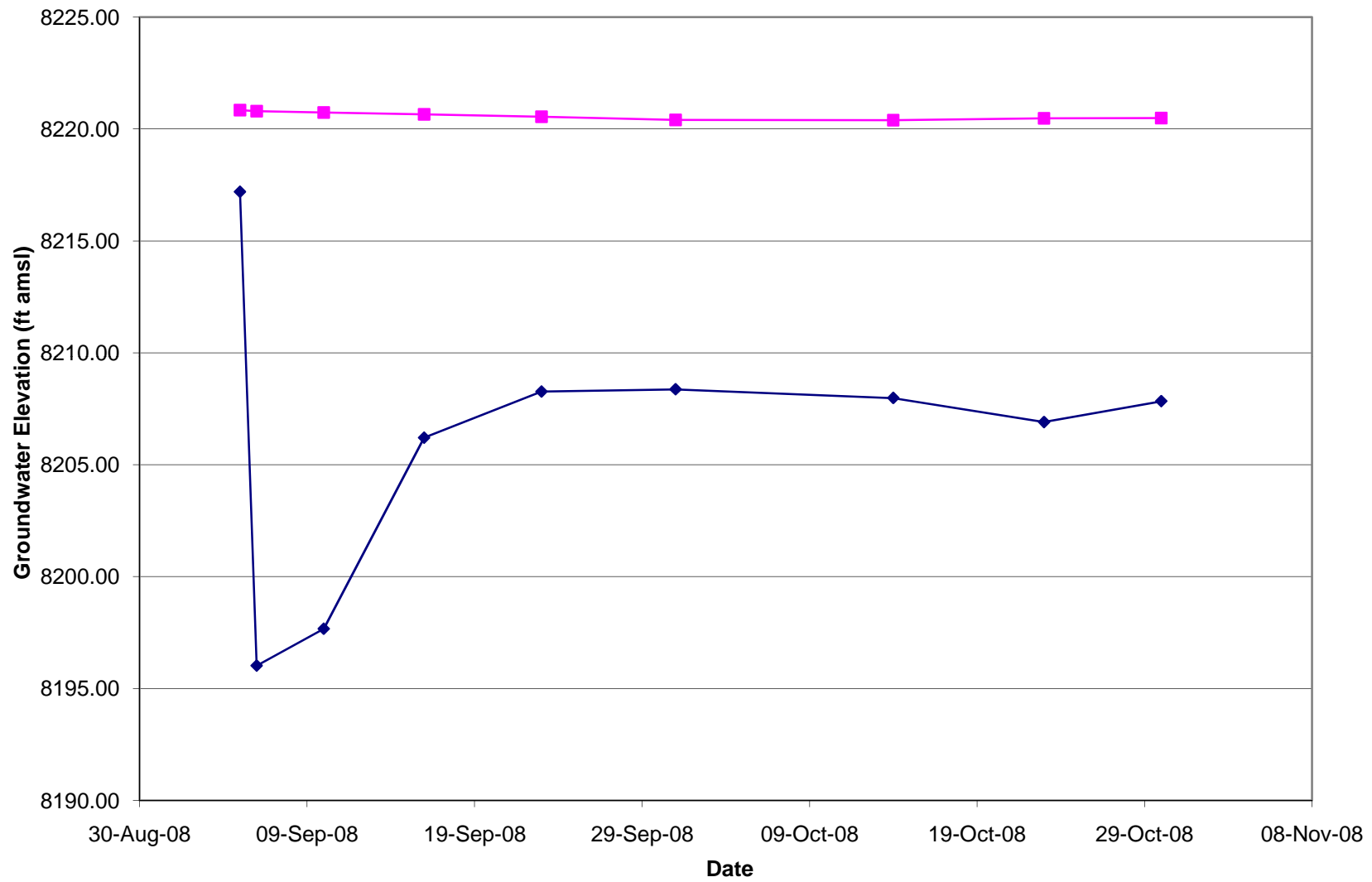
MW-3(S,D)



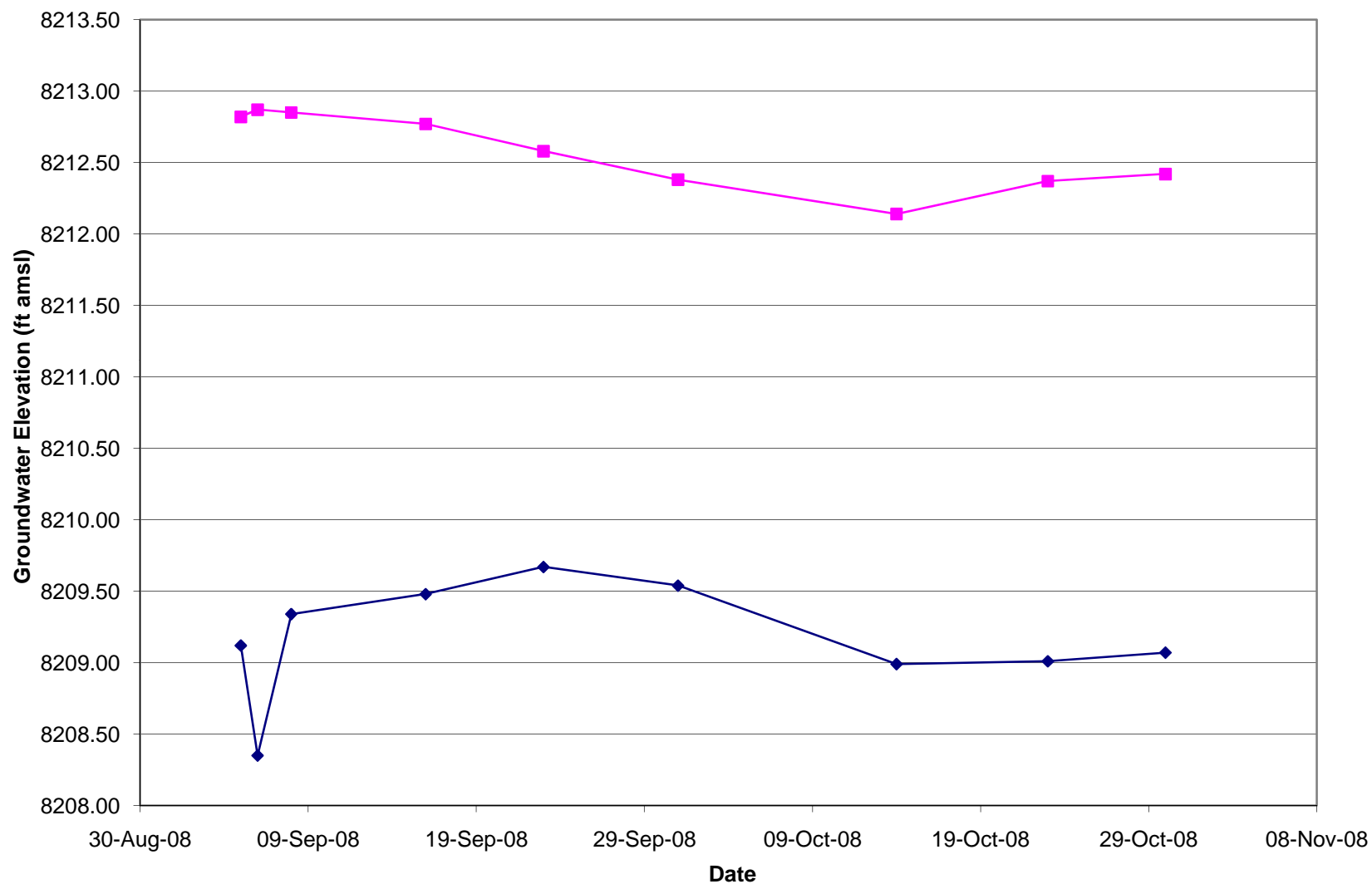
MW-4(S,D)



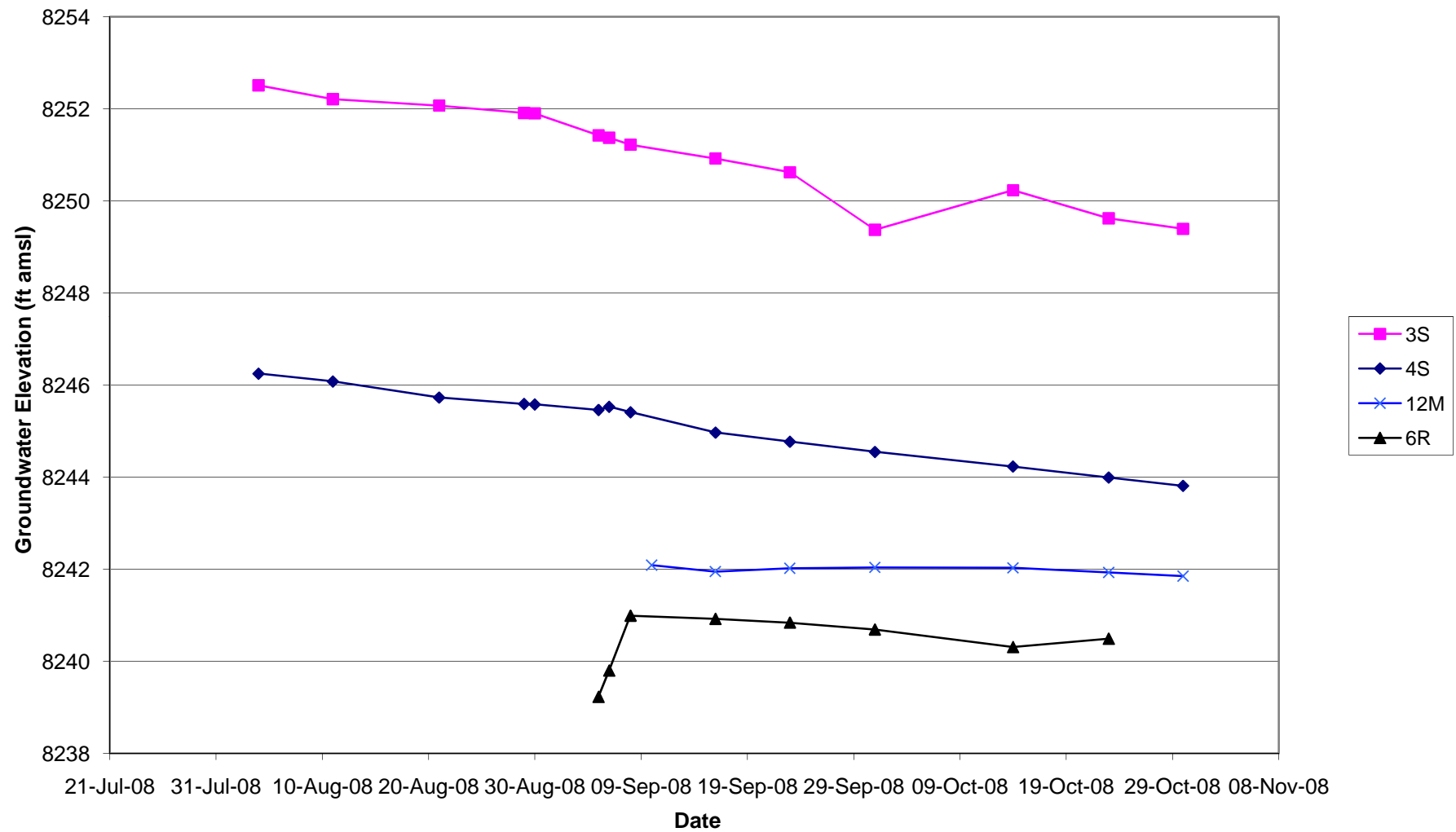
MW-7(S,D)



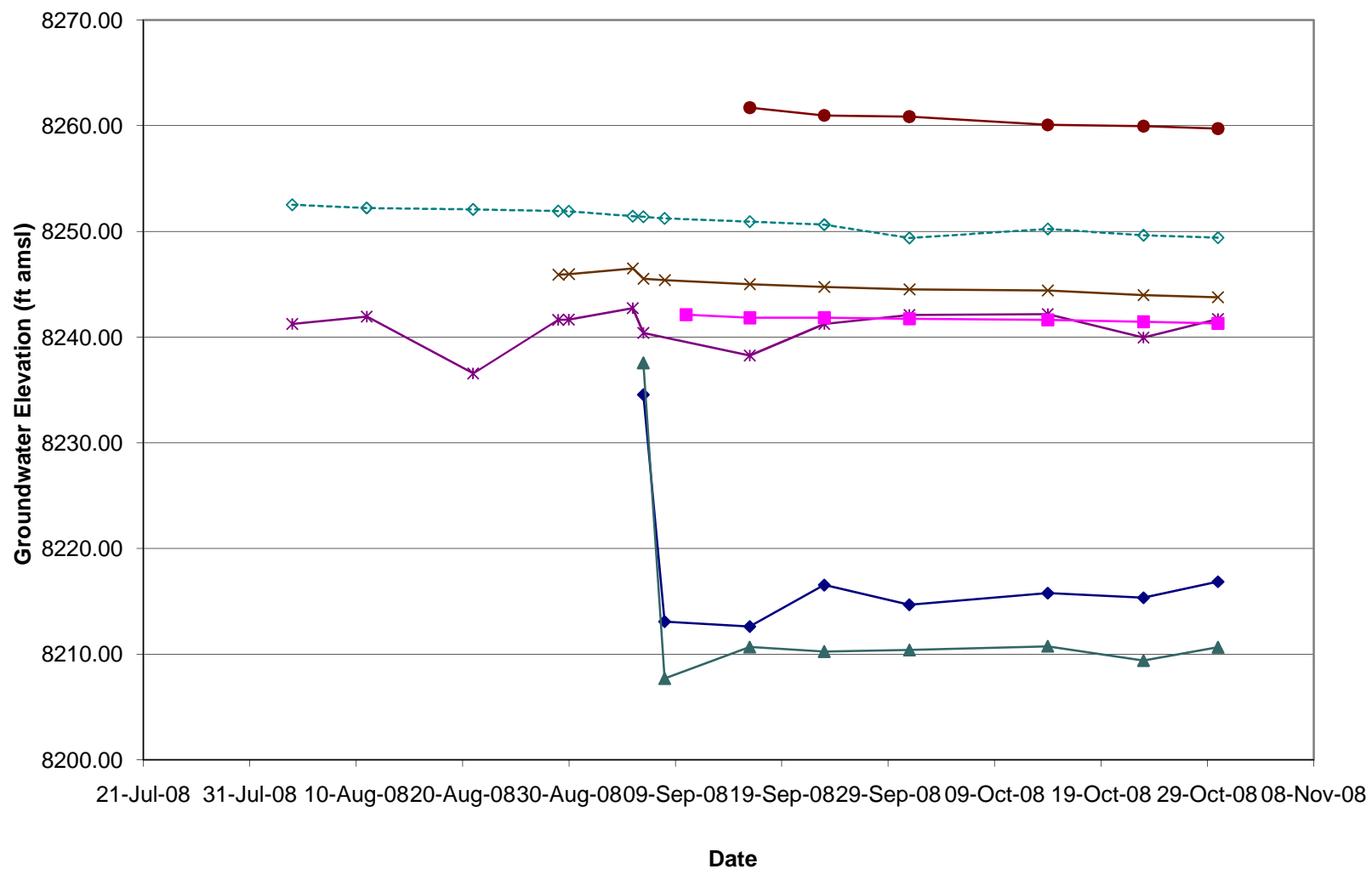
MW-8(S,D)



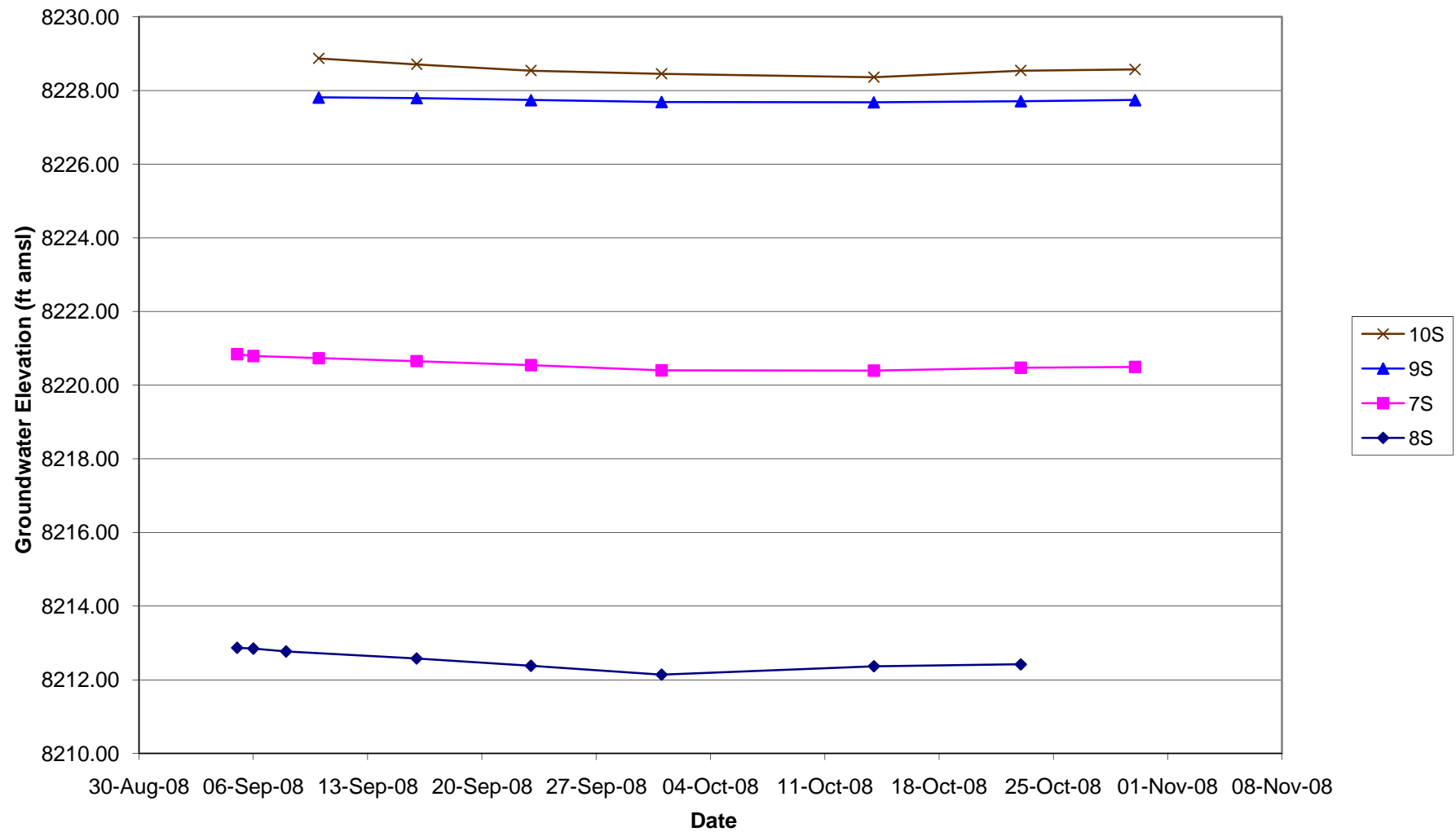
Shallow Well Hydrographs
Prather Spring Wells



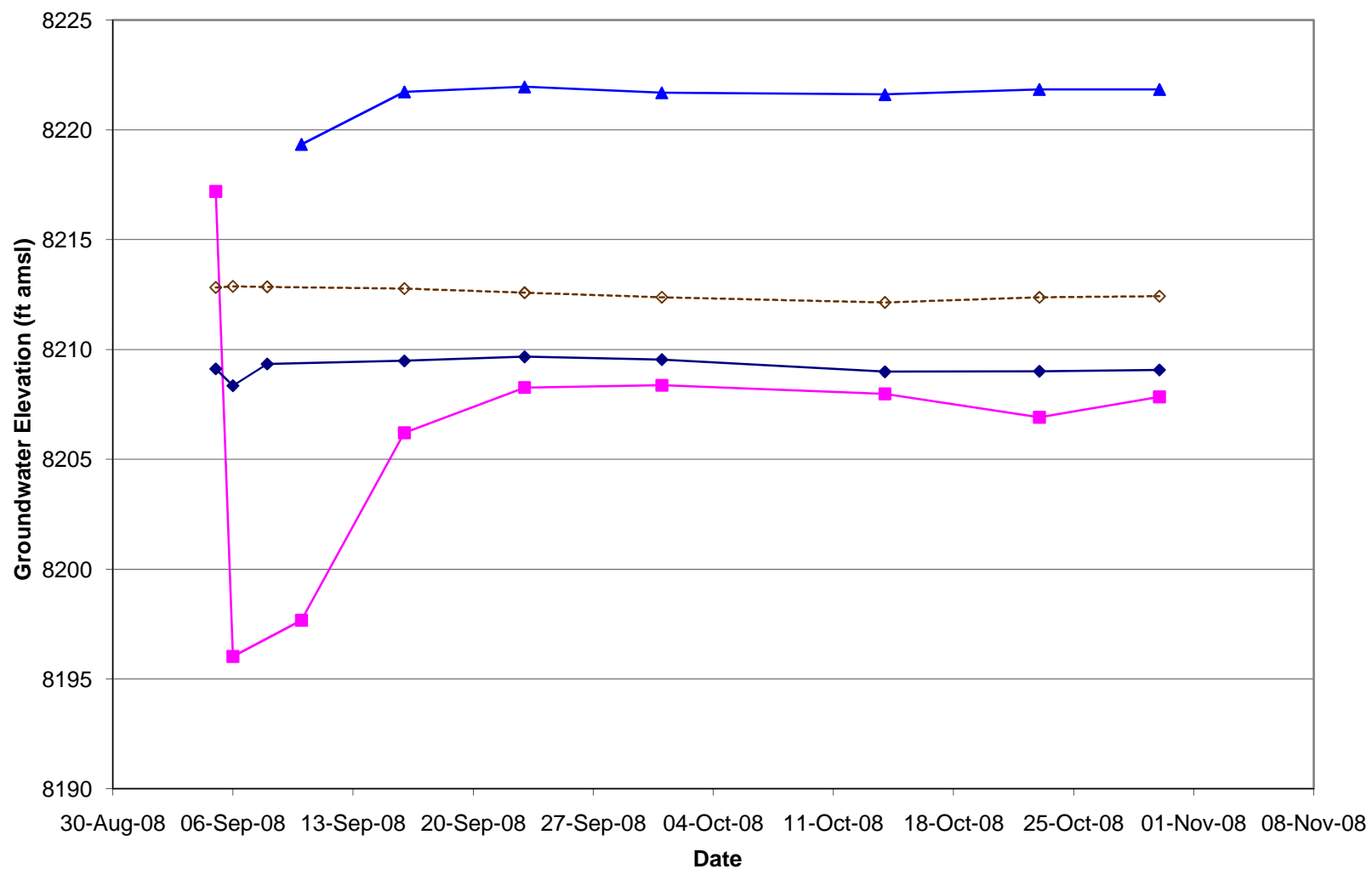
Deep Well Hydrographs Prather Spring Wells



Shallow Well Hydrographs
Spring 2 Wells



Deep Well Hydrographs Spring 2 Wells



LOCID	LOGDATE	MPELEV_rev	depth to water un-calculated	GW Elev
PS-MW02D	16-Sep-08	8296.45	34.73	8261.72
PS-MW02D	23-Sep-08	8296.45	35.47	8260.98
PS-MW02D	01-Oct-08	8296.45	35.59	8260.86
PS-MW02D	14-Oct-08	8296.45	36.37	8260.08
PS-MW02D	23-Oct-08	8296.45	36.48	8259.97
PS-MW02D	30-Oct-08	8296.45	36.72	8259.73
PS-MW02M	16-Sep-08	8296.67	20.49	8276.18
PS-MW02M	23-Sep-08	8296.67	-999.00	DRY
PS-MW02M	01-Oct-08	8296.67	22.07	8274.60
PS-MW02M	14-Oct-08	8296.67	22.06	8274.61
PS-MW02M	23-Oct-08	8296.67	22.10	8274.57
PS-MW02M	30-Oct-08	8296.67	22.11	8274.56
PS-MW03D	29-Aug-08	8272.21	26.30	8245.91
PS-MW03D	30-Aug-08	8272.21	26.25	8245.96
PS-MW03D	05-Sep-08	8272.21	25.71	8246.50
PS-MW03D	06-Sep-08	8272.21	26.70	8245.51
PS-MW03D	08-Sep-08	8272.21	26.82	8245.39
PS-MW03D	16-Sep-08	8272.21	27.21	8245.00
PS-MW03D	23-Sep-08	8272.21	27.46	8244.75
PS-MW03D	01-Oct-08	8272.21	27.70	8244.51
PS-MW03D	14-Oct-08	8272.21	27.80	8244.41
PS-MW03D	23-Oct-08	8272.21	28.24	8243.97
PS-MW03D	30-Oct-08	8272.21	28.45	8243.76
PS-MW03S	04-Aug-08	8271.22	18.71	8252.51
PS-MW03S	11-Aug-08	8271.22	19.01	8252.21
PS-MW03S	21-Aug-08	8271.22	19.15	8252.07
PS-MW03S	29-Aug-08	8272.64	20.73	8251.91
PS-MW03S	30-Aug-08	8272.64	20.74	8251.90
PS-MW03S	05-Sep-08	8272.64	21.22	8251.42
PS-MW03S	06-Sep-08	8272.64	21.27	8251.37
PS-MW03S	08-Sep-08	8272.64	21.42	8251.22
PS-MW03S	16-Sep-08	8272.64	21.72	8250.92
PS-MW03S	23-Sep-08	8272.64	22.02	8250.62
PS-MW03S	01-Oct-08	8272.64	23.27	8249.37
PS-MW03S	14-Oct-08	8272.64	22.41	8250.23
PS-MW03S	23-Oct-08	8272.64	23.02	8249.62
PS-MW03S	30-Oct-08	8272.64	23.25	8249.39
PS-MW04D	06-Sep-08	8262.2	27.65	8234.55
PS-MW04D	08-Sep-08	8263.15	50.08	8213.07
PS-MW04D	16-Sep-08	8263.15	50.55	8212.60
PS-MW04D	23-Sep-08	8263.15	46.62	8216.53
PS-MW04D	01-Oct-08	8263.15	48.48	8214.67
PS-MW04D	14-Oct-08	8263.15	47.39	8215.76
PS-MW04D	23-Oct-08	8263.15	47.83	8215.32
PS-MW04D	30-Oct-08	8263.15	46.31	8216.84
PS-MW04S	04-Aug-08	8262.58	16.33	8246.25
PS-MW04S	11-Aug-08	8262.58	16.50	8246.08

PS-MW04S	21-Aug-08	8262.58	16.85	8245.73
PS-MW04S	29-Aug-08	8262.58	16.99	8245.59
PS-MW04S	30-Aug-08	8262.58	17.00	8245.58
PS-MW04S	05-Sep-08	8262.58	17.12	8245.46
PS-MW04S	06-Sep-08	8262.58	17.05	8245.53
PS-MW04S	08-Sep-08	8262.58	17.17	8245.41
PS-MW04S	16-Sep-08	8263.61	18.64	8244.97
PS-MW04S	23-Sep-08	8263.61	18.84	8244.77
PS-MW04S	01-Oct-08	8263.61	19.06	8244.55
PS-MW04S	14-Oct-08	8263.61	19.38	8244.23
PS-MW04S	23-Oct-08	8263.61	19.62	8243.99
PS-MW04S	30-Oct-08	8263.61	19.80	8243.81
PS-MW05D	06-Sep-08	8261.74	24.18	8237.56
PS-MW05D	08-Sep-08	8261.74	54.04	8207.70
PS-MW05D	16-Sep-08	8261.74	51.06	8210.68
PS-MW05D	23-Sep-08	8261.74	51.48	8210.26
PS-MW05D	01-Oct-08	8261.74	51.34	8210.40
PS-MW05D	14-Oct-08	8261.74	50.99	8210.75
PS-MW05D	23-Oct-08	8261.74	52.33	8209.41
PS-MW05D	30-Oct-08	8261.74	51.08	8210.66
PS-MW05S	04-Aug-08	8263.00	-999.00	DRY
PS-MW05S	11-Aug-08	8263.00	-999.00	DRY
PS-MW05S	15-Aug-08	8263.00	-999.00	DRY
PS-MW05S	21-Aug-08	8263.00	-999.00	DRY
PS-MW05S	29-Aug-08	8263.00	-999.00	DRY
PS-MW05S	30-Aug-08	8263.00	-999.00	DRY
PS-MW05S	05-Sep-08	8263.00	-999.00	DRY
PS-MW05S	06-Sep-08	8263.00	-999.00	DRY
PS-MW05S	16-Sep-08	8263.00	-999.00	DRY
PS-MW05S	23-Sep-08	8263.00	-999.00	DRY
PS-MW05S	01-Oct-08	8263.00	-999.00	DRY
PS-MW05S	14-Oct-08	8263.00	-999.00	DRY
PS-MW05S	23-Oct-08	8263.00	-999.00	DRY
PS-MW05S	30-Oct-08	8263.00	-999.00	DRY
PS-MW06R	05-Sep-08	8262.26	-999.00	DRY
PS-MW06R	06-Sep-08	8262.26	23.03	8239.23
PS-MW06R	08-Sep-08	8262.26	22.46	8239.80
PS-MW06R	16-Sep-08	8262.26	21.27	8240.99
PS-MW06R	23-Sep-08	8262.26	21.34	8240.92
PS-MW06R	01-Oct-08	8262.26	21.42	8240.84
PS-MW06R	14-Oct-08	8262.26	21.57	8240.69
PS-MW06R	23-Oct-08	8262.26	21.95	8240.31
PS-MW06R	30-Oct-08	8262.26	21.77	8240.49
PS-MW06S	04-Aug-08	8262.86	-999.00	DRY
PS-MW06S	11-Aug-08	8262.86	-999.00	DRY
PS-MW06S	15-Aug-08	8262.86	-999.00	DRY
PS-MW06S	21-Aug-08	8262.86	-999.00	DRY
PS-MW06S	29-Aug-08	8262.86	-999.00	DRY
PS-MW06S	30-Aug-08	8262.86	-999.00	DRY

PS-MW06S	05-Sep-08	8262.86	-999.00	DRY
PS-MW06S	06-Sep-08	8262.86	-999.00	DRY
PS-MW06S	16-Sep-08	8262.86	-999.00	DRY
PS-MW06S	23-Sep-08	8262.86	-999.00	DRY
PS-MW06S	01-Oct-08	8262.86	-999.00	DRY
PS-MW06S	14-Oct-08	8262.86	-999.00	DRY
PS-MW06S	23-Oct-08	8262.86	-999.00	DRY
PS-MW06S	30-Oct-08	8262.86	-999.00	DRY
PS-MW07D	05-Sep-08	8238.71	21.51	8217.20
PS-MW07D	06-Sep-08	8238.71	42.69	8196.02
PS-MW07D	10-Sep-08	8238.71	41.04	8197.67
PS-MW07D	16-Sep-08	8238.71	32.50	8206.21
PS-MW07D	23-Sep-08	8238.71	30.44	8208.27
PS-MW07D	01-Oct-08	8238.71	30.34	8208.37
PS-MW07D	14-Oct-08	8238.71	30.73	8207.98
PS-MW07D	23-Oct-08	8238.71	31.80	8206.91
PS-MW07D	30-Oct-08	8238.71	30.87	8207.84
PS-MW07S	05-Sep-08	8238.64	17.80	8220.84
PS-MW07S	06-Sep-08	8238.64	17.85	8220.79
PS-MW07S	10-Sep-08	8238.64	17.91	8220.73
PS-MW07S	16-Sep-08	8238.51	17.86	8220.65
PS-MW07S	23-Sep-08	8238.51	17.97	8220.54
PS-MW07S	01-Oct-08	8238.51	18.11	8220.40
PS-MW07S	14-Oct-08	8238.51	18.12	8220.39
PS-MW07S	23-Oct-08	8238.51	18.04	8220.47
PS-MW07S	30-Oct-08	8238.51	18.02	8220.49
PS-MW08D	05-Sep-08	8227.64	18.52	8209.12
PS-MW08D	06-Sep-08	8227.64	19.29	8208.35
PS-MW08D	08-Sep-08	8227.64	18.30	8209.34
PS-MW08D	16-Sep-08	8227.64	18.16	8209.48
PS-MW08D	23-Sep-08	8227.64	17.97	8209.67
PS-MW08D	01-Oct-08	8227.64	18.10	8209.54
PS-MW08D	14-Oct-08	8227.64	18.65	8208.99
PS-MW08D	23-Oct-08	8227.64	18.63	8209.01
PS-MW08D	30-Oct-08	8227.64	18.57	8209.07
PS-MW08S	05-Sep-08	8229.09	16.27	8212.82
PS-MW08S	06-Sep-08	8229.09	16.22	8212.87
PS-MW08S	08-Sep-08	8229.09	16.24	8212.85
PS-MW08S	16-Sep-08	8229.09	16.32	8212.77
PS-MW08S	23-Sep-08	8229.09	16.51	8212.58
PS-MW08S	01-Oct-08	8229.09	16.71	8212.38
PS-MW08S	14-Oct-08	8229.09	16.95	8212.14
PS-MW08S	23-Oct-08	8229.09	16.72	8212.37
PS-MW08S	30-Oct-08	8229.09	16.67	8212.42
PS-MW09S	10-Sep-08	8246.47	18.66	8227.81
PS-MW09S	16-Sep-08	8246.47	18.68	8227.79
PS-MW09S	23-Sep-08	8246.47	18.73	8227.74
PS-MW09S	01-Oct-08	8246.47	18.78	8227.69
PS-MW09S	14-Oct-08	8246.47	18.79	8227.68

PS-MW09S	23-Oct-08	8246.47	18.76	8227.71
PS-MW09S	30-Oct-08	8246.47	18.73	8227.74
PS-MW10D	10-Sep-08	8241.95	22.61	8219.34
PS-MW10D	16-Sep-08	8241.95	20.22	8221.73
PS-MW10D	23-Sep-08	8241.95	19.99	8221.96
PS-MW10D	01-Oct-08	8241.95	20.26	8221.69
PS-MW10D	14-Oct-08	8241.95	20.34	8221.61
PS-MW10D	23-Oct-08	8241.95	20.11	8221.84
PS-MW10D	30-Oct-08	8241.95	20.11	8221.84
PS-MW10S	10-Sep-08	8242.43	13.56	8228.87
PS-MW10S	16-Sep-08	8242.31	13.60	8228.71
PS-MW10S	23-Sep-08	8242.31	13.77	8228.54
PS-MW10S	01-Oct-08	8242.31	13.86	8228.45
PS-MW10S	14-Oct-08	8242.31	13.95	8228.36
PS-MW10S	23-Oct-08	8242.31	13.77	8228.54
PS-MW10S	30-Oct-08	8242.31	13.74	8228.57
PS-MW11D	04-Aug-08	8259.32	18.09	8241.23
PS-MW11D	11-Aug-08	8259.32	17.38	8241.94
PS-MW11D	21-Aug-08	8259.32	22.76	8236.56
PS-MW11D	29-Aug-08	8259.32	17.70	8241.62
PS-MW11D	30-Aug-08	8259.32	17.68	8241.64
PS-MW11D	05-Sep-08	8259.32	16.59	8242.73
PS-MW11D	06-Sep-08	8259.32	18.93	8240.39
PS-MW11D	16-Sep-08	8259.32	21.06	8238.26
PS-MW11D	23-Sep-08	8259.32	18.09	8241.23
PS-MW11D	01-Oct-08	8259.32	17.24	8242.08
PS-MW11D	14-Oct-08	8259.32	17.15	8242.17
PS-MW11D	23-Oct-08	8259.32	19.36	8239.96
PS-MW11D	30-Oct-08	8259.32	17.61	8241.71
PS-MW11S	04-Aug-08	8260.53	18.09	8242.44
PS-MW11S	11-Aug-08	8260.53	18.08	8242.45
PS-MW11S	21-Aug-08	8260.53	18.21	8242.32
PS-MW11S	29-Aug-08	8260.53	18.28	8242.25
PS-MW11S	30-Aug-08	8260.53	18.28	8242.25
PS-MW11S	05-Sep-08	8260.53	18.27	8242.26
PS-MW11S	06-Sep-08	8260.53	18.32	8242.21
PS-MW11S	10-Sep-08	8261.70	19.40	8242.30
PS-MW11S	16-Sep-08	8261.70	19.64	8242.06
PS-MW11S	23-Sep-08	8261.70	19.58	8242.12
PS-MW11S	01-Oct-08	8261.70	19.59	8242.11
PS-MW11S	14-Oct-08	8261.70	19.61	8242.09
PS-MW11S	23-Oct-08	8261.70	19.71	8241.99
PS-MW11S	30-Oct-08	8261.70	19.78	8241.92
PS-MW12M	10-Sep-08	8260.41	18.32	8242.09
PS-MW12M	16-Sep-08	8260.41	18.46	8241.95
PS-MW12M	23-Sep-08	8260.41	18.39	8242.02
PS-MW12M	01-Oct-08	8260.41	18.37	8242.04
PS-MW12M	14-Oct-08	8260.41	18.38	8242.03
PS-MW12M	23-Oct-08	8260.41	18.48	8241.93

PS-MW12M	30-Oct-08	8260.41	18.56	8241.85
PS-MW13D	10-Sep-08	8281.55	39.44	8242.11
PS-MW13D	16-Sep-08	8281.55	39.73	8241.82
PS-MW13D	23-Sep-08	8281.55	39.71	8241.84
PS-MW13D	01-Oct-08	8281.55	39.81	8241.74
PS-MW13D	14-Oct-08	8281.55	39.93	8241.62
PS-MW13D	23-Oct-08	8281.55	40.10	8241.45
PS-MW13D	30-Oct-08	8281.55	40.25	8241.30
PS-MW14	23-Oct-08	8256.75	14.54	8242.21
PS-MW14	30-Oct-08	8256.75	14.68	8242.07
PS-MW15	23-Oct-08	8263.12	19.57	8243.55
PS-MW15	30-Oct-08	8263.12	19.74	8243.38
PS-MW16	23-Oct-08	8270.72	24.92	8245.80
PS-MW16	30-Oct-08	8270.72	25.14	8245.58
PS-MW17	23-Oct-08	8278.49	29.99	8248.50
PS-MW17	30-Oct-08	8278.49	30.30	8248.19
PS-MW18	23-Oct-08	8274.21	24.17	8250.04
PS-MW18	30-Oct-08	8274.21	24.48	8249.73
PS-MW19	23-Oct-08	8269.51	22.92	8246.59
PS-MW19	30-Oct-08	8269.51	22.36	8247.15
PS-MW20	23-Oct-08	8267.96	22.79	8245.17
PS-MW20	30-Oct-08	8267.96	22.90	8245.06
PS-MW21	23-Oct-08	8266.48	21.98	8244.50
PS-MW21	30-Oct-08	8266.48	22.07	8244.41
PS-MW22	23-Oct-08	8259.95	20.22	8239.73
PS-MW22	30-Oct-08	8259.95	21.40	8238.55
PS-MW23	23-Oct-08	8236.83	17.38	8219.45
PS-MW23	30-Oct-08	8236.83	17.32	8219.51
PS-MW24	23-Oct-08	8245.89	18.03	8227.86
PS-MW24	30-Oct-08	8245.89	15.42	8230.47
PS-MW25	23-Oct-08	8252.7	15.45	8237.25
PS-MW25	30-Oct-08	8252.7	15.42	8237.28
PS-MW26	23-Oct-08	8252.46	16.90	8235.56
PS-MW26	30-Oct-08	8252.46	-999.00	DRY
PS-MW27	23-Oct-08	8229.88	18.66	8211.22
PS-MW27	30-Oct-08	8229.88	18.61	8211.27
PS-MW28	23-Oct-08	8256.46	19.81	8236.65
PS-MW28	30-Oct-08	8256.46	19.46	8237.00
PS-MW29	23-Oct-08	8259.47	-999.00	DRY
PS-MW29	30-Oct-08	8259.47	18.20	8241.27
PS-MW30	23-Oct-08	8292.18	47.10	8245.08
PS-MW30	30-Oct-08	8292.18	47.34	8244.84
PS-MW31	23-Oct-08	8286.40	43.53	8242.87
PS-MW31	30-Oct-08	8286.40	43.66	8242.74
PS-MW32	23-Oct-08	8257.91	16.51	8241.40
PS-MW32	30-Oct-08	8257.91	16.68	8241.23
PS-MW33	23-Oct-08	8258.71	21.22	8237.49
PS-MW33	30-Oct-08	8258.71	16.47	8242.24
PS-MW34	23-Oct-08	8257.72	16.48	8241.24

PS-MW34	30-Oct-08	8257.72	16.61	8241.11
---------	-----------	---------	-------	---------

Monitoring Well	Date	Measuring Point Elevation	Depth to Water	Ground Water Elevation
PS-MW02D	16-Sep-08	8296.45	34.73	8261.72
PS-MW02D	23-Sep-08	8296.45	35.47	8260.98
PS-MW02D	01-Oct-08	8296.45	35.59	8260.86
PS-MW02D	14-Oct-08	8296.45	36.37	8260.08
PS-MW02D	23-Oct-08	8296.45	36.48	8259.97
PS-MW02D	30-Oct-08	8296.45	36.72	8259.73
PS-MW02M	16-Sep-08	8296.67	20.49	8276.18
PS-MW02M	23-Sep-08	8296.67	-999.00	DRY
PS-MW02M	01-Oct-08	8296.67	22.07	8274.60
PS-MW02M	14-Oct-08	8296.67	22.06	8274.61
PS-MW02M	23-Oct-08	8296.67	22.10	8274.57
PS-MW02M	30-Oct-08	8296.67	22.11	8274.56
PS-MW03D	29-Aug-08	8272.21	26.30	8245.91
PS-MW03D	30-Aug-08	8272.21	26.25	8245.96
PS-MW03D	05-Sep-08	8272.21	25.71	8246.50
PS-MW03D	06-Sep-08	8272.21	26.70	8245.51
PS-MW03D	08-Sep-08	8272.21	26.82	8245.39
PS-MW03D	16-Sep-08	8272.21	27.21	8245.00
PS-MW03D	23-Sep-08	8272.21	27.46	8244.75
PS-MW03D	01-Oct-08	8272.21	27.70	8244.51
PS-MW03D	14-Oct-08	8272.21	27.80	8244.41
PS-MW03D	23-Oct-08	8272.21	28.24	8243.97
PS-MW03D	30-Oct-08	8272.21	28.45	8243.76
PS-MW03S	04-Aug-08	8271.22	18.71	8252.51
PS-MW03S	11-Aug-08	8271.22	19.01	8252.21
PS-MW03S	21-Aug-08	8271.22	19.15	8252.07
PS-MW03S	29-Aug-08	8272.64	20.73	8251.91
PS-MW03S	30-Aug-08	8272.64	20.74	8251.90
PS-MW03S	05-Sep-08	8272.64	21.22	8251.42
PS-MW03S	06-Sep-08	8272.64	21.27	8251.37
PS-MW03S	08-Sep-08	8272.64	21.42	8251.22
PS-MW03S	16-Sep-08	8272.64	21.72	8250.92
PS-MW03S	23-Sep-08	8272.64	22.02	8250.62
PS-MW03S	01-Oct-08	8272.64	23.27	8249.37
PS-MW03S	14-Oct-08	8272.64	22.41	8250.23
PS-MW03S	23-Oct-08	8272.64	23.02	8249.62
PS-MW03S	30-Oct-08	8272.64	23.25	8249.39
PS-MW04D	06-Sep-08	8262.2	27.65	8234.55
PS-MW04D	08-Sep-08	8263.15	50.08	8213.07
PS-MW04D	16-Sep-08	8263.15	50.55	8212.60
PS-MW04D	23-Sep-08	8263.15	46.62	8216.53
PS-MW04D	01-Oct-08	8263.15	48.48	8214.67
PS-MW04D	14-Oct-08	8263.15	47.39	8215.76
PS-MW04D	23-Oct-08	8263.15	47.83	8215.32
PS-MW04D	30-Oct-08	8263.15	46.31	8216.84
PS-MW04S	04-Aug-08	8262.58	16.33	8246.25
PS-MW04S	11-Aug-08	8262.58	16.50	8246.08
PS-MW04S	21-Aug-08	8262.58	16.85	8245.73
PS-MW04S	29-Aug-08	8262.58	16.99	8245.59
PS-MW04S	30-Aug-08	8262.58	17.00	8245.58
PS-MW04S	05-Sep-08	8262.58	17.12	8245.46

Monitoring Well	Date	Measuring Point Elevation	Depth to Water	Ground Water Elevation
PS-MW04S	08-Sep-08	8262.58	17.17	8245.41
PS-MW04S	16-Sep-08	8263.61	18.64	8244.97
PS-MW04S	23-Sep-08	8263.61	18.84	8244.77
PS-MW04S	01-Oct-08	8263.61	19.06	8244.55
PS-MW04S	14-Oct-08	8263.61	19.38	8244.23
PS-MW04S	23-Oct-08	8263.61	19.62	8243.99
PS-MW04S	30-Oct-08	8263.61	19.80	8243.81
PS-MW05D	06-Sep-08	8261.74	24.18	8237.56
PS-MW05D	08-Sep-08	8261.74	54.04	8207.70
PS-MW05D	16-Sep-08	8261.74	51.06	8210.68
PS-MW05D	23-Sep-08	8261.74	51.48	8210.26
PS-MW05D	01-Oct-08	8261.74	51.34	8210.40
PS-MW05D	14-Oct-08	8261.74	50.99	8210.75
PS-MW05D	23-Oct-08	8261.74	52.33	8209.41
PS-MW05D	30-Oct-08	8261.74	51.08	8210.66
PS-MW05S	04-Aug-08	8263.00	-999.00	DRY
PS-MW05S	11-Aug-08	8263.00	-999.00	DRY
PS-MW05S	15-Aug-08	8263.00	-999.00	DRY
PS-MW05S	21-Aug-08	8263.00	-999.00	DRY
PS-MW05S	29-Aug-08	8263.00	-999.00	DRY
PS-MW05S	30-Aug-08	8263.00	-999.00	DRY
PS-MW05S	05-Sep-08	8263.00	-999.00	DRY
PS-MW05S	06-Sep-08	8263.00	-999.00	DRY
PS-MW05S	16-Sep-08	8263.00	-999.00	DRY
PS-MW05S	23-Sep-08	8263.00	-999.00	DRY
PS-MW05S	01-Oct-08	8263.00	-999.00	DRY
PS-MW05S	14-Oct-08	8263.00	-999.00	DRY
PS-MW05S	23-Oct-08	8263.00	-999.00	DRY
PS-MW05S	30-Oct-08	8263.00	-999.00	DRY
PS-MW06R	05-Sep-08	8262.26	-999.00	DRY
PS-MW06R	06-Sep-08	8262.26	23.03	8239.23
PS-MW06R	08-Sep-08	8262.26	22.46	8239.80
PS-MW06R	16-Sep-08	8262.26	21.27	8240.99
PS-MW06R	23-Sep-08	8262.26	21.34	8240.92
PS-MW06R	01-Oct-08	8262.26	21.42	8240.84
PS-MW06R	14-Oct-08	8262.26	21.57	8240.69
PS-MW06R	23-Oct-08	8262.26	21.95	8240.31
PS-MW06R	30-Oct-08	8262.26	21.77	8240.49
PS-MW06S	04-Aug-08	8262.86	-999.00	DRY
PS-MW06S	11-Aug-08	8262.86	-999.00	DRY
PS-MW06S	15-Aug-08	8262.86	-999.00	DRY
PS-MW06S	21-Aug-08	8262.86	-999.00	DRY
PS-MW06S	29-Aug-08	8262.86	-999.00	DRY
PS-MW06S	30-Aug-08	8262.86	-999.00	DRY
PS-MW06S	05-Sep-08	8262.86	-999.00	DRY
PS-MW06S	06-Sep-08	8262.86	-999.00	DRY
PS-MW06S	16-Sep-08	8262.86	-999.00	DRY
PS-MW06S	23-Sep-08	8262.86	-999.00	DRY
PS-MW06S	01-Oct-08	8262.86	-999.00	DRY
PS-MW06S	14-Oct-08	8262.86	-999.00	DRY
PS-MW06S	23-Oct-08	8262.86	-999.00	DRY

Monitoring Well	Date	Measuring Point Elevation	Depth to Water	Ground Water Elevation
PS-MW07D	05-Sep-08	8238.71	21.51	8217.20
PS-MW07D	06-Sep-08	8238.71	42.69	8196.02
PS-MW07D	10-Sep-08	8238.71	41.04	8197.67
PS-MW07D	16-Sep-08	8238.71	32.50	8206.21
PS-MW07D	23-Sep-08	8238.71	30.44	8208.27
PS-MW07D	01-Oct-08	8238.71	30.34	8208.37
PS-MW07D	14-Oct-08	8238.71	30.73	8207.98
PS-MW07D	23-Oct-08	8238.71	31.80	8206.91
PS-MW07D	30-Oct-08	8238.71	30.87	8207.84
PS-MW07S	05-Sep-08	8238.64	17.80	8220.84
PS-MW07S	06-Sep-08	8238.64	17.85	8220.79
PS-MW07S	10-Sep-08	8238.64	17.91	8220.73
PS-MW07S	16-Sep-08	8238.51	17.86	8220.65
PS-MW07S	23-Sep-08	8238.51	17.97	8220.54
PS-MW07S	01-Oct-08	8238.51	18.11	8220.40
PS-MW07S	14-Oct-08	8238.51	18.12	8220.39
PS-MW07S	23-Oct-08	8238.51	18.04	8220.47
PS-MW07S	30-Oct-08	8238.51	18.02	8220.49
PS-MW08D	05-Sep-08	8227.64	18.52	8209.12
PS-MW08D	06-Sep-08	8227.64	19.29	8208.35
PS-MW08D	08-Sep-08	8227.64	18.30	8209.34
PS-MW08D	16-Sep-08	8227.64	18.16	8209.48
PS-MW08D	23-Sep-08	8227.64	17.97	8209.67
PS-MW08D	01-Oct-08	8227.64	18.10	8209.54
PS-MW08D	14-Oct-08	8227.64	18.65	8208.99
PS-MW08D	23-Oct-08	8227.64	18.63	8209.01
PS-MW08D	30-Oct-08	8227.64	18.57	8209.07
PS-MW08S	05-Sep-08	8229.09	16.27	8212.82
PS-MW08S	06-Sep-08	8229.09	16.22	8212.87
PS-MW08S	08-Sep-08	8229.09	16.24	8212.85
PS-MW08S	16-Sep-08	8229.09	16.32	8212.77
PS-MW08S	23-Sep-08	8229.09	16.51	8212.58
PS-MW08S	01-Oct-08	8229.09	16.71	8212.38
PS-MW08S	14-Oct-08	8229.09	16.95	8212.14
PS-MW08S	23-Oct-08	8229.09	16.72	8212.37
PS-MW08S	30-Oct-08	8229.09	16.67	8212.42
PS-MW09S	10-Sep-08	8246.47	18.66	8227.81
PS-MW09S	16-Sep-08	8246.47	18.68	8227.79
PS-MW09S	23-Sep-08	8246.47	18.73	8227.74
PS-MW09S	01-Oct-08	8246.47	18.78	8227.69
PS-MW09S	14-Oct-08	8246.47	18.79	8227.68
PS-MW09S	23-Oct-08	8246.47	18.76	8227.71
PS-MW09S	30-Oct-08	8246.47	18.73	8227.74
PS-MW10D	10-Sep-08	8241.95	22.61	8219.34
PS-MW10D	16-Sep-08	8241.95	20.22	8221.73
PS-MW10D	23-Sep-08	8241.95	19.99	8221.96
PS-MW10D	01-Oct-08	8241.95	20.26	8221.69
PS-MW10D	14-Oct-08	8241.95	20.34	8221.61
PS-MW10D	23-Oct-08	8241.95	20.11	8221.84
PS-MW10D	30-Oct-08	8241.95	20.11	8221.84
PS-MW10S	10-Sep-08	8242.43	13.56	8228.87

Monitoring Well	Date	Measuring Point Elevation	Depth to Water	Ground Water Elevation
PS-MW10S	23-Sep-08	8242.31	13.77	8228.54
PS-MW10S	01-Oct-08	8242.31	13.86	8228.45
PS-MW10S	14-Oct-08	8242.31	13.95	8228.36
PS-MW10S	23-Oct-08	8242.31	13.77	8228.54
PS-MW10S	30-Oct-08	8242.31	13.74	8228.57
PS-MW11D	04-Aug-08	8259.32	18.09	8241.23
PS-MW11D	11-Aug-08	8259.32	17.38	8241.94
PS-MW11D	21-Aug-08	8259.32	22.76	8236.56
PS-MW11D	29-Aug-08	8259.32	17.70	8241.62
PS-MW11D	30-Aug-08	8259.32	17.68	8241.64
PS-MW11D	05-Sep-08	8259.32	16.59	8242.73
PS-MW11D	06-Sep-08	8259.32	18.93	8240.39
PS-MW11D	16-Sep-08	8259.32	21.06	8238.26
PS-MW11D	23-Sep-08	8259.32	18.09	8241.23
PS-MW11D	01-Oct-08	8259.32	17.24	8242.08
PS-MW11D	14-Oct-08	8259.32	17.15	8242.17
PS-MW11D	23-Oct-08	8259.32	19.36	8239.96
PS-MW11D	30-Oct-08	8259.32	17.61	8241.71
PS-MW11S	04-Aug-08	8260.53	18.09	8242.44
PS-MW11S	11-Aug-08	8260.53	18.08	8242.45
PS-MW11S	21-Aug-08	8260.53	18.21	8242.32
PS-MW11S	29-Aug-08	8260.53	18.28	8242.25
PS-MW11S	30-Aug-08	8260.53	18.28	8242.25
PS-MW11S	05-Sep-08	8260.53	18.27	8242.26
PS-MW11S	06-Sep-08	8260.53	18.32	8242.21
PS-MW11S	10-Sep-08	8261.70	19.40	8242.30
PS-MW11S	16-Sep-08	8261.70	19.64	8242.06
PS-MW11S	23-Sep-08	8261.70	19.58	8242.12
PS-MW11S	01-Oct-08	8261.70	19.59	8242.11
PS-MW11S	14-Oct-08	8261.70	19.61	8242.09
PS-MW11S	23-Oct-08	8261.70	19.71	8241.99
PS-MW11S	30-Oct-08	8261.70	19.78	8241.92
PS-MW12M	10-Sep-08	8260.41	18.32	8242.09
PS-MW12M	16-Sep-08	8260.41	18.46	8241.95
PS-MW12M	23-Sep-08	8260.41	18.39	8242.02
PS-MW12M	01-Oct-08	8260.41	18.37	8242.04
PS-MW12M	14-Oct-08	8260.41	18.38	8242.03
PS-MW12M	23-Oct-08	8260.41	18.48	8241.93
PS-MW12M	30-Oct-08	8260.41	18.56	8241.85
PS-MW13D	10-Sep-08	8281.55	39.44	8242.11
PS-MW13D	16-Sep-08	8281.55	39.73	8241.82
PS-MW13D	23-Sep-08	8281.55	39.71	8241.84
PS-MW13D	01-Oct-08	8281.55	39.81	8241.74
PS-MW13D	14-Oct-08	8281.55	39.93	8241.62
PS-MW13D	23-Oct-08	8281.55	40.10	8241.45
PS-MW13D	30-Oct-08	8281.55	40.25	8241.30
PS-MW14	23-Oct-08	8256.75	14.54	8242.21
PS-MW14	30-Oct-08	8256.75	14.68	8242.07
PS-MW15	23-Oct-08	8263.12	19.57	8243.55
PS-MW15	30-Oct-08	8263.12	19.74	8243.38
PS-MW16	23-Oct-08	8270.72	24.92	8245.80

Monitoring Well	Date	Measuring Point Elevation	Depth to Water	Ground Water Elevation
PS-MW17	23-Oct-08	8278.49	29.99	8248.50
PS-MW17	30-Oct-08	8278.49	30.30	8248.19
PS-MW18	23-Oct-08	8274.21	24.17	8250.04
PS-MW18	30-Oct-08	8274.21	24.48	8249.73
PS-MW19	23-Oct-08	8269.51	22.92	8246.59
PS-MW19	30-Oct-08	8269.51	22.36	8247.15
PS-MW20	23-Oct-08	8267.96	22.79	8245.17
PS-MW20	30-Oct-08	8267.96	22.90	8245.06
PS-MW21	23-Oct-08	8266.48	21.98	8244.50
PS-MW21	30-Oct-08	8266.48	22.07	8244.41
PS-MW22	23-Oct-08	8259.95	20.22	8239.73
PS-MW22	30-Oct-08	8259.95	21.40	8238.55
PS-MW23	23-Oct-08	8236.83	17.38	8219.45
PS-MW23	30-Oct-08	8236.83	17.32	8219.51
PS-MW24	23-Oct-08	8245.89	18.03	8227.86
PS-MW24	30-Oct-08	8245.89	15.42	8230.47
PS-MW25	23-Oct-08	8252.7	15.45	8237.25
PS-MW25	30-Oct-08	8252.7	15.42	8237.28
PS-MW26	23-Oct-08	8252.46	16.90	8235.56
PS-MW26	30-Oct-08	8252.46	-999.00	DRY
PS-MW27	23-Oct-08	8229.88	18.66	8211.22
PS-MW27	30-Oct-08	8229.88	18.61	8211.27
PS-MW28	23-Oct-08	8256.46	19.81	8236.65
PS-MW28	30-Oct-08	8256.46	19.46	8237.00
PS-MW29	23-Oct-08	8259.47	-999.00	DRY
PS-MW29	30-Oct-08	8259.47	18.20	8241.27
PS-MW30	23-Oct-08	8292.18	47.10	8245.08
PS-MW30	30-Oct-08	8292.18	47.34	8244.84
PS-MW31	23-Oct-08	8286.40	43.53	8242.87
PS-MW31	30-Oct-08	8286.40	43.66	8242.74
PS-MW32	23-Oct-08	8257.91	16.51	8241.40
PS-MW32	30-Oct-08	8257.91	16.68	8241.23
PS-MW33	23-Oct-08	8258.71	21.22	8237.49
PS-MW33	30-Oct-08	8258.71	16.47	8242.24
PS-MW34	23-Oct-08	8257.72	16.48	8241.24
PS-MW34	30-Oct-08	8257.72	16.61	8241.11