

Well Pad
Monitoring Reports & Photos

Well ID: CLOUGH 21

Monitor Date: 7/9/2008

Observers: N. Weisenbacher, L. Brandt

Reclamation Status as of July 2008: Not reclaimed

Area not yet seeded, currently graded and tracked.

Approximate Seed Date:

Vegetation Community: Salt Desert Scrubland Low Elevation

VEGETATION

Reference Area % Cover: 25.8

Desirable Vegetation

Appears vigorous and self sustaining?

☐ New Shoots

☐ Litter

Size:

☐ Flowers / Seeds

☐ Seedlings

Color / Vigor:

Comments

Undesirable Vegetation

Noxious Weeds Present?

Undesirable Species <5% of Total Cover:

EROSION

Erosion Issues:

BLM RECLAMATION TIMETABLE:

% Area in Use:	100
% Monitor:	0
% Acceptable:	0
% Reclamation Complete:	0
% Restored:	0

Additional work needed to obtain 90% cover:

Major Facilities Issues:

Additional Comments:

CLOUGH 21

VEGETATION DATA

Vegetation Cover

First Hit % Cover

Ground Hit % Cover

Species	T1	T2	T3	Mean	T1	T2	T3	Mean
---------	----	----	----	------	----	----	----	------

No Data

Species List

CLOUGH 21



CLOUGH 21 North

Photo Date: 7/9/2008

X: 2318620.44922

Y: 1617890.20025



CLOUGH 21 East

Photo Date: 7/9/2008

X: 2318515.99162

Y: 1617991.90249



CLOUGH 21 South

Photo Date: 7/9/2008

X: 2318547.87571

Y: 1618205.12999



CLOUGH 21 West

Photo Date: 7/9/2008

X: 2318764.52879

Y: 1618148.54802

Well ID: DOE 1-M-25

BLM Land

Monitor Date: 7/24/2008

Observers: N. Weisenbacher

Reclamation Status as of July 2008: Reclaimed

Seeded in late spring 2008- no growth yet.

Approximate Seed Date:

Vegetation Community: Pinon-Juniper Woodland South Aspect

VEGETATION

Reference Area % Cover: 10.2

Desirable Vegetation

Appears vigorous and self sustaining? No

☐ New Shoots

☐ Litter

Size:

☐ Flowers / Seeds

☐ Seedlings

Color / Vigor:

Comments

Undesirable Vegetation

Noxious Weeds Present? No

Undesirable Species <5% of Total Cover:

EROSION

Erosion Issues: None

BLM RECLAMATION TIMETABLE:

Additional work needed to obtain 90% cover:

% Area in Use: 50

% Monitor: 50

% Acceptable: 0

% Reclamation Complete: 0

% Restored: 0

Major Facilities Issues:

Additional Comments:

VEGETATION DATA

Vegetation Cover		First Hit % Cover				Ground Hit % Cover			
Species	T1	T2	T3	Mean	T1	T2	T3	Mean	

No Data

Species List

DOE 1-M-25



DOE 1-M-25 North

Photo Date: 7/24/2008

X: 2276315.61385 Y: 1613035.77808



DOE 1-M-25 East

Photo Date: 7/24/2008

X: 2276200.51172 Y: 1613102.72996



DOE 1-M-25 South

Photo Date: 7/24/2008

X: 2276363.21345 Y: 1613264.17412



DOE 1-M-25 West

Photo Date: 7/24/2008

X: 2276438.77246 Y: 1613236.56750

Well ID: DOE 1-M-29

BLM Land

Monitor Date: 7/22/2008

Observers: N. Weisenbacher

Reclamation Status as of July 2008: Reclaimed

Approximate Seed Date:

Vegetation Community: Pinon-Juniper Woodland South Aspect

VEGETATION

Total Acceptable Vegetation % Cover: 12.66

Reference Area % Cover: 10.2

90% of Reference Area? Yes

Relative % Cover of: Grasses 92.55 Forbs 0 Shrubs 7.464

Desirable Vegetation

Appears vigorous and self sustaining? Yes

☒ New Shoots

☐ Litter

Size: Healthy

☒ Flowers / Seeds

☐ Seedlings

Color / Vigor: Healthy

Comments

Undesirable Vegetation

Noxious Weeds Present? Yes Jointed goat grass on portions of reclaimed area. Cheatgrass interspersed among desirables on reclamation area. Halogeton present.

Undesirable Species <5% of Total Cover: > 5%

EROSION

Erosion Issues: None

BLM RECLAMATION TIMETABLE:

% Area in Use: 95

% Monitor: 0

% Acceptable: 5

% Reclamation Complete: 0

% Restored: 0

Additional work needed to obtain 90% cover:

Only 5% of site has been reclaimed. This small portion that has been reclaimed looks good. Rest of site needs reclamation.

Major Facilities Issues:

Additional Comments: Only 5% of site has been reclaimed. This small portion that has been reclaimed looks good.

VEGETATION DATA**Vegetation Cover**

Species	First Hit % Cover				Ground Hit % Cover			
	T1	T2	T3	Mean	T1	T2	T3	Mean
Acceptable Species								
Atriplex canescens	0	4	2	2	0	0	0	0
Atriplex confertifolia	0	0	4	1.33	0	0	0	0
Elymus trachycaulus		0	4	1.33		0	2	0.67
Pascopyrum smithii	18	2	4	8	8	0	2	3.33
Total Acceptable Cover	18	6	14	12.66	8	0	4	4
Undesirable Species								
Bromus tectorum	14	50	32	32	2	6	8	5.33
Total Undesirable Cover	14	50	32	32	2	6	8	5.33
Total Vegetative Cover:	32	56	46	44.66	10	6	12	9.33
Litter	56	42	42	46.67	78	92	76	82
Rock	0	0	2	0.67	0	0	2	0.67
Total Non-Vegetative Cover	56	42	44	47.34	78	92	78	82.67
Total Cover	88	98	90	92	88	98	90	92
Bare	12	2	10	8	12	2	10	8

Species List

Species	Frequency on Pad	Relative % Cover		
	# of occurrences out of 3 possible			
Aegilops cylindrica	Observed	Grasses	92.55	
Agropyron cristatum	2	Forbs	0	
Atriplex canescens	3	Shrubs	7.464	
Atriplex confertifolia	3			
Bassia scoparia	1			
Bromus inermis	Observed	Transect	% Slope	Aspect
Bromus tectorum	3	1	2	SW
Elymus lanceolatus	Observed	2	10	S
Elymus trachycaulus	2	3	8	S/SE
Eremopyrum triticeum	Observed			
Gutierrezia sarothrae	Observed			
Halogeton glomeratus	Observed			
Pascopyrum smithii	3			
Penstemon palmeri	Observed			
Sarcobatus vermiculatus	Observed			
Thinopyrum intermedium	Observed			
Tragopogon dubius	Observed			
Unknown Thistle 1	Observed			

DOE 1-M-29



DOE 1-M-29 North

Photo Date: 7/22/2008

X: 2290472.96982

Y: 1614037.06379



DOE 1-M-29 East

Photo Date: 7/22/2008

X: 2290439.78934

Y: 1614102.59618



DOE 1-M-29 South

Photo Date: 7/22/2008

X: 2290617.53194

Y: 1614501.27433



DOE 1-M-29 West

Photo Date: 7/22/2008

X: 2290651.22076

Y: 1614420.94607



DOE 1-M-29 Sample Point 1

Photo Date: 7/22/2008

X: 2290570.11529

Y: 1614537.03503



DOE 1-M-29 Sample Point 2

Photo Date: 7/22/2008

X: 2290603.99483

Y: 1614490.09278



DOE 1-M-29 Sample Point 3

Photo Date: 7/22/2008

X: 2290615.59194

Y: 1614457.21565

Well ID: DOE 1-M-31

BLM Land

Monitor Date: 7/24/2008

Observers: N. Weisenbacher

Reclamation Status as of July 2008: Not reclaimed

Drill rig on site.

Approximate Seed Date:

Vegetation Community: Pinon-Juniper Woodland South Aspect

VEGETATION

Reference Area % Cover: 10.2

Desirable Vegetation

Appears vigorous and self sustaining?

☐ New Shoots

☐ Litter

Size:

☐ Flowers / Seeds

☐ Seedlings

Color / Vigor:

Comments

Undesirable Vegetation

Noxious Weeds Present?

Undesirable Species <5% of Total Cover:

EROSION

Erosion Issues: None

BLM RECLAMATION TIMETABLE:

Additional work needed to obtain 90% cover:

% Area in Use: 100

% Monitor: 0

% Acceptable: 0

% Reclamation Complete: 0

% Restored: 0

Major Facilities Issues:

Additional Comments: One photo only.

VEGETATION DATA

Vegetation Cover		First Hit % Cover				Ground Hit % Cover			
Species	T1	T2	T3	Mean	T1	T2	T3	Mean	

No Data

Species List

DOE 1-M-31



DOE 1-M-31

Photo Date: 7/24/2008

X: GPS data not available Y:

Well ID: DOE 1-M-35

BLM Land

Monitor Date: 7/24/2008

Observers: N. Weisenbacher

Reclamation Status as of July 2008: Reclaimed

Seeded late spring 2008.

Approximate Seed Date:

Vegetation Community: Pinon-Juniper Woodland South Aspect

VEGETATION

Reference Area % Cover: 10.2

Desirable Vegetation

Appears vigorous and self sustaining? No

☐ New Shoots

☐ Litter

Size:

☐ Flowers / Seeds

☐ Seedlings

Color / Vigor:

Comments

Undesirable Vegetation

Noxious Weeds Present? No Russian thistle, kochia present.

Undesirable Species <5% of Total Cover:

EROSION

Erosion Issues: None

BLM RECLAMATION TIMETABLE:

Additional work needed to obtain 90% cover:

% Area in Use: 60

% Monitor: 40

% Acceptable: 0

% Reclamation Complete: 0

% Restored: 0

Major Facilities Issues:

Additional Comments:

VEGETATION DATA

Vegetation Cover		First Hit % Cover				Ground Hit % Cover			
	Species	T1	T2	T3	Mean	T1	T2	T3	Mean
No Data									

Species List

Species	Frequency on Pad
	<small># of occurrences out of 3 possible</small>
Helianthus annuus	Observed
Melilotus officinalis	Observed

DOE 1-M-35



DOE 1-M-35 North

Photo Date: 7/24/2008

X: 2274456.48442 Y: 1610084.66831



DOE 1-M-35 East

Photo Date: 7/24/2008

X: 2274217.59010 Y: 1610242.47792



DOE 1-M-35 South

Photo Date: 7/24/2008

X: 2274248.95670 Y: 1610368.66052



DOE 1-M-35 West

Photo Date: 7/24/2008

X: 2274509.84146 Y: 1610271.43431

Well ID: DOE 1-W-20

BLM Land

Monitor Date: 7/22/2008

Observers: N. Weisenbacher

Reclamation Status as of July 2008: Reclaimed

Approximate Seed Date:

Vegetation Community: Pinon-Juniper Woodland South Aspect

VEGETATION

Total Acceptable Vegetation % Cover: 21.33

Reference Area % Cover: 10.2

90% of Reference Area? Yes

Relative % Cover of: Grasses 85.32 Forbs 14.71 Shrubs 0

Desirable Vegetation

Appears vigorous and self sustaining? Yes

☒ New Shoots

☒ Litter

Size: Healthy

☒ Flowers / Seeds

☒ Seedlings

Color / Vigor: Healthy

Comments Cheatgrass dominates cover.

Undesirable Vegetation

Noxious Weeds Present? Yes Cheatgrass interspersed somewhat heavily among desirables.

Undesirable Species <5% of Total Cover: < 5%

EROSION

Erosion Issues: None

BLM RECLAMATION TIMETABLE:

% Area in Use: 10

% Monitor: 10

% Acceptable: 80

% Reclamation Complete: 0

% Restored: 0

Additional work needed to obtain 90% cover:

Some weed control for cheatgrass or overseed in weedy areas.

Major Facilities Issues:

Additional Comments:

VEGETATION DATA**Vegetation Cover**

Species	First Hit % Cover				Ground Hit % Cover			
	T1	T2	T3	Mean	T1	T2	T3	Mean
Acceptable Species								
Bromus arvensis		2		0.67		0		0
Elymus trachycaulus			6	2			0	0
Medicago sativa			10	3.33			6	2
Pascopyrum smithii	10	10	6	8.67	2	2	0	1.33
Pseudoroegneria spicata	2	14		5.33	0	4		1.33
Thinopyrum intermedium			4	1.33			2	0.67
Total Acceptable Cover	12	26	26	21.33	2	6	8	5.33
Undesirable Species								
Bromus tectorum	4	0		1.33	2	0		0.67
Total Undesirable Cover	4	0		1.33	2	0		0.67
Total Vegetative Cover:	16	26	26	22.66	4	6	8	6
Litter	60	46	64	56.67	72	66	80	72.67
Rock	2	0	0	0.67	2	0	0	0.67
Total Non-Vegetative Cover	62	46	64	57.34	74	66	80	73.34
Total Cover	78	72	90	80	78	72	88	79.34
Bare	22	28	10	20	22	28	12	20.67

Species List

Species	Frequency on Pad	Relative % Cover		
	# of occurrences out of 3 possible	Grasses	Forbs	Shrubs
Achnatherum hymenoides	2	85.32		
Alyssum desertorum	Observed		14.71	
Artemisia tridentata	Observed			0
Atriplex canescens	1			
Atriplex confertifolia	Observed			
Bromus arvensis	1			
Bromus inermis	2	1	1	E
Bromus tectorum	2	2	15	SE
Camelina rumelica	1	3	Flat	(SE)
Chenopodium album	Observed			
Chrysothamnus viscidiflorus	1			
Dactylis glomerata	Observed			
Elymus elymoides	1			
Elymus trachycaulus	1			
Erigeron engelmannii	Observed			
Grindelia squarrosa	1			
Hordeum jubatum	Observed			
Lactuca serriola	Observed			
Lepidium perfoliatum	Observed			
Melilotus officinalis	Observed			
Medicago sativa	1			
Onobrychis viciifolia	1			
Pascopyrum smithii	3			

Penstemon palmeri	Observed
Pseudoroegneria spicata	2
Taraxacum officinale	Observed
Thinopyrum intermedium	1
Thinopyrum ponticum	Observed
Tragopogon dubius	1
Unknown Fabaceae 1	1
Unknown Panicum 1	Observed
Verbena bracteata	Observed

DOE 1-W-20



DOE 1-W-20 North

Photo Date: 7/22/2008

X: 2289226.02734

Y: 1618244.00372



DOE 1-W-20 East

Photo Date: 7/22/2008

X: 2289150.70512

Y: 1618243.07253



DOE 1-W-20 South

Photo Date: 7/22/2008

X: 2289250.60210

Y: 1618384.10247



DOE 1-W-20 West

Photo Date: 7/22/2008

X: 2289271.86834

Y: 1618330.57637



DOE 1-W-20 Sample Point 1

Photo Date: 7/22/2008

X: 2289188.62289

Y: 1618225.56797

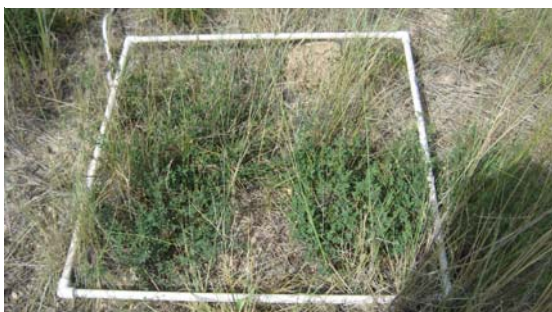


DOE 1-W-20 Sample Point 2

Photo Date: 7/22/2008

X: 2289220.18602

Y: 1618302.11494



DOE 1-W-20 Sample Point 3

Photo Date: 7/22/2008

X: 2289221.12937

Y: 1618446.71758

Well ID: DOE 1-W-28

BLM Land

Monitor Date: 7/22/2008

Observers: N. Weisenbacher

Reclamation Status as of July 2008: Reclaimed

Approximate Seed Date:

Vegetation Community: Pinon-Juniper Woodland South Aspect

VEGETATION

Total Acceptable Vegetation % Cover: 21.99

Reference Area % Cover: 10.2

90% of Reference Area? Yes

Relative % Cover of: Grasses 79.19 Forbs 8.336 Shrubs 12.50

Desirable Vegetation

Appears vigorous and self sustaining? Yes

☒ New Shoots

☐ Litter

Size: Healthy

☒ Flowers / Seeds

☐ Seedlings

Color / Vigor: Healthy

Comments Low cover, sparseness consistent with surroundings.

Undesirable Vegetation

Noxious Weeds Present? Yes Cheatgrass, halogeton, and bindweed but very minimal. Cheatgrass on north and northwest portion more heavy but patch is relatively small.

Undesirable Species <5% of Total Cover: > 5%

EROSION

Erosion Issues: Rills >3"

Erosion features consistent with surrounding undisturbed are but are noted.

Erosion photo 1: rilling consistent w/ surrounding undisturbed.

Erosion photo 2: same.

Erosion photo 3: same.

BLM RECLAMATION TIMETABLE:

% Area in Use: 30

% Monitor: 70

% Acceptable: 0

% Reclamation Complete: 0

% Restored: 0

Additional work needed to obtain 90% cover:

Cover in surrounding undisturbed area looks equally sparse, not sure if anything needs to be done other than monitoring. Weeds are not too much of a problem.

Major Facilities Issues:

Additional Comments:

VEGETATION DATA**Vegetation Cover**

Species	First Hit % Cover				Ground Hit % Cover			
	T1	T2	T3	Mean	T1	T2	T3	Mean
Acceptable Species								
Achnatherum hymenoides	0		4	1.33	0		2	0.67
Atriplex canescens	0	0	4	1.33	0	0	0	0
Bromus arvensis			16	5.33			4	1.33
Gutierrezia sarothrae		0	2	0.67		0	0	0
Pascopyrum smithii	0	8		2.67	0	6		2
xTriticosecale rimpai 2	4			1.33	2			0.67
Unknown Fabaceae 3	0	6		2	0	6		2
Unknown Panicum 1		10		3.33		4		1.33
Unknown Panicum 2			6	2			2	0.67
Unknown Shrub 2		6		2		4		1.33
Total Acceptable Cover	4	30	32	21.99	2	20	8	10
Undesirable Species								
Bromus tectorum			28	9.33			12	4
Salsola kali			2	0.67			0	0
Total Undesirable Cover			30	10			12	4
Total Vegetative Cover:	4	30	62	31.99	2	20	20	14
Litter	2	22	28	17.33	2	22	66	30
Rock	6	4	0	3.33	6	4	6	5.33
Standing Litter			4	1.33			0	0
Total Non-Vegetative Cover	8	26	32	21.99	8	26	72	35.33
Total Cover	12	56	94	53.98	10	46	92	49.33
Bare	88	44	6	46	90	54	8	50.67

Species List

Species	Frequency on Pad	Relative % Cover		
	# of occurrences out of 3 possible			
Achnatherum hymenoides	2	Grasses	79.19	
Agropyron cristatum	Observed	Forbs	8.336	
Allium textile	Observed	Shrubs	12.50	
Atriplex canescens	3			
Atriplex confertifolia	2			
Bassia scoparia	Observed			
Bromus arvensis	1			
Bromus inermis	Observed			
Bromus tectorum	1			
Chrysothamnus viscidiflorus	2			
Convolvulus arvensis	Observed			
Elymus elymoides	1			
Elymus lanceolatus	Observed			
Elymus trachycaulus	Observed			
Ericameria nauseosa	Observed			
Gutierrezia sarothrae	2			
Halogeton glomeratus	Observed			

Transect	% Slope	Aspect
1	18	NW
2	10	W
3	3	S/SW

Hordeum jubatum	Observed
Melilotus officinalis	Observed
Packera sp.	Observed
Pascopyrum smithii	2
Pseudoroegneria spicata	1
Salsola kali	1
Sphaeralcea parvifolia	1
Tragopogon dubius	1
xTriticosecale rimpai	2
Unknown Aster 1	Observed
Unknown Fabaceae 3	2
Unknown Panicum 1	1
Unknown Panicum 2	1
Unknown Shrub 2	1
Unknown Shrub 3	1
Zuckia brandegeei	2

DOE 1-W-28



DOE 1-W-28 North
Photo Date: 7/22/2008



DOE 1-W-28 East
Photo Date: 7/22/2008



DOE 1-W-28 South
Photo Date: 7/22/2008



DOE 1-W-28 West
Photo Date: 7/22/2008



DOE 1-W-28 Sample Point 1
Photo Date: 7/22/2008



DOE 1-W-28 Sample Point 2
Photo Date: 7/22/2008



DOE 1-W-28 Sample Point 3
Photo Date: 7/22/2008



DOE 1-W-28 Erosion Picture 1
Photo Date: 7/22/2008

DOE 1-W-28



DOE 1-W-28 Erosion Picture 2
Photo Date: 7/22/2008



DOE 1-W-28 Erosion Picture 3
Photo Date: 7/22/2008

Well ID: DOE 2-M-36

BLM Land

Monitor Date: 7/24/2008

Observers: N. Weisenbacher

Reclamation Status as of July 2008: Reclaimed

Seeded and mulched. Not crimped, just tracked

Approximate Seed Date:

Vegetation Community: Pinon-Juniper Woodland South Aspect

VEGETATION

Reference Area % Cover: 10.2

Desirable Vegetation

Appears vigorous and self sustaining? No

☐ New Shoots

☐ Litter

Size: No seedlings

☐ Flowers / Seeds

☐ Seedlings

Color / Vigor:

Comments

Undesirable Vegetation

Noxious Weeds Present? No

Undesirable Species <5% of Total Cover: n/a

EROSION

Erosion Issues: None

BLM RECLAMATION TIMETABLE:

% Area in Use: 60

% Monitor: 40

% Acceptable: 0

% Reclamation Complete: 0

% Restored: 0

Additional work needed to obtain 90% cover:

No plants to be seen- continue to monitor. Seeded late spring 2008.

Major Facilities Issues:

Additional Comments:

VEGETATION DATA

Vegetation Cover

Vegetation Cover		First Hit % Cover				Ground Hit % Cover			
		Species	T1	T2	T3	Mean	T1	T2	T3
No Data									
Total Non-Vegetative Cover	Litter	40	12	48	33.33	40	12	48	33.33
	Rock	8	0	12	6.67	8	0	12	6.67
		48	12	60	40	48	12	60	40
	Bare	52	88	40	60	52	88	40	60

Species List

Transect	% Slope	Aspect
1	35	W
2	7	W
3	Flat	(W)

DOE 2-M-36



DOE 2-M-36 North

Photo Date: 7/24/2008

X: 2279312.89883

Y: 1610562.95031



DOE 2-M-36 East

Photo Date: 7/24/2008

X: 2279234.33872

Y: 1610789.75831



DOE 2-M-36 South

Photo Date: 7/24/2008

X: 2279421.79922

Y: 1610798.45244



DOE 2-M-36 West

Photo Date: 7/24/2008

X: 2279519.86963

Y: 1610655.98616



DOE 2-M-36 Sample Point 1

Photo Date: 7/24/2008

X: 2279530.20848

Y: 1610652.95313



DOE 2-M-36 Sample Point 2

Photo Date: 7/24/2008

X: 2279404.51388

Y: 1610734.69795



DOE 2-M-36 Sample Point 3

Photo Date: 7/24/2008

X: 2279252.01964

Y: 1610751.25855

Well ID: DOE 2-W-27

BLM Land

Monitor Date: 7/17/2008

Observers: N. Weisenbacher

Reclamation Status as of July 2008: Reclaimed

Approximate Seed Date:

Vegetation Community: Pinon-Juniper Woodland South Aspect

VEGETATION

Total Acceptable Vegetation % Cover: 7.34

Reference Area % Cover: 10.2

90% of Reference Area? No

Relative % Cover of: Grasses 33.29 Forbs 58.26 Shrubs 8.323

Desirable Vegetation

Appears vigorous and self sustaining? Yes

☒ New Shoots

☐ Litter

Size: Healthy but young

☒ Flowers / Seeds

☒ Seedlings

Color / Vigor: Healthy

Comments

Undesirable Vegetation

Noxious Weeds Present? Yes Some cheatgrass.

Undesirable Species <5% of Total Cover: < 5%

EROSION

Erosion Issues: Gullying

Erosion photo 1: on north portion of pad looking south (gullying)
Erosion photo 2: on east /northeast portion looking southwest
(gullying) Erosion photo 3: on east /northeast portion looking
southwest (gullying) Erosion photo 4: on south portion of pad looking
southwest

BLM RECLAMATION TIMETABLE:

% Area in Use:	20
% Monitor:	80
% Acceptable:	0
% Reclamation Complete:	0
% Restored:	0

Additional work needed to obtain 90% cover:

Overall site looks good. Watch erosion issues.

Major Facilities Issues:

Additional Comments:

VEGETATION DATA**Vegetation Cover**

Species	First Hit % Cover				Ground Hit % Cover			
	T1	T2	T3	Mean	T1	T2	T3	Mean
Acceptable Species								
Atriplex canescens	0		2	0.67	0		0	0
Onobrychis viciifolia	10	0	2	4	0	0	2	0.67
Pascopyrum smithii	0	0	2	0.67	0	0	2	0.67
Thinopyrum ponticum	6			2	0			0
Total Acceptable Cover	16	0	6	7.34	0	0	4	1.34
Undesirable Species								
Halogeton glomeratus		0	2	0.67		0	2	0.67
Total Undesirable Cover		0	2	0.67		0	2	0.67
Total Vegetative Cover:	16	0	8	8.01	0	0	6	2.01
Litter	0	0	0	0	4	0	0	1.33
Rock	2	4	0	2	2	4	0	2
Standing Litter	6			2	0			0
Total Non-Vegetative Cover	8	4	0	4	6	4	0	3.33
Total Cover	24	4	8	12.01	6	4	6	5.34
Bare	76	96	92	88	94	96	94	94.67

Species List

Species	Frequency on Pad	Relative % Cover		
	# of occurrences out of 3 possible			
Agropyron cristatum	Observed	Grasses	33.29	
Atriplex canescens	2	Forbs	58.26	
Atriplex confertifolia	3	Shrubs	8.323	
Bassia scoparia	2			
Bromus tectorum	1			
Ericameria nauseosa	Observed	Transect	% Slope	Aspect
Halogeton glomeratus	2	1	20	S
Melilotus officinalis	2	2	20	W/SW
Medicago sativa	Observed	3	20	S
Onobrychis viciifolia	3			
Pascopyrum smithii	3			
Psathyrostachys juncea	1			
Thinopyrum ponticum	1			

DOE 2-W-27



DOE 2-W-27 North
Photo Date: 7/17/2008



DOE 2-W-27 East
Photo Date: 7/17/2008



DOE 2-W-27 South
Photo Date: 7/17/2008



DOE 2-W-27 West
Photo Date: 7/17/2008



DOE 2-W-27 Sample Point 1
Photo Date: 7/17/2008



DOE 2-W-27 Sample Point 2
Photo Date: 7/17/2008



DOE 2-W-27 Sample Point 3
Photo Date: 7/17/2008



DOE 2-W-27 Erosion Picture 1
Photo Date: 7/17/2008

DOE 2-W-27



DOE 2-W-27 Erosion Picture 2
Photo Date: 7/17/2008



DOE 2-W-27 Erosion Picture 3
Photo Date: 7/17/2008



DOE 2-W-27 Erosion Picture 4
Photo Date: 7/17/2008

Well ID: DOE 3-W-21

BLM Land

Monitor Date: 7/22/2008

Observers: N. Weisenbacher

Reclamation Status as of July 2008: Reclaimed

Work-over rig on site.

Approximate Seed Date:

Vegetation Community: Pinon-Juniper Woodland South Aspect

VEGETATION

Total Acceptable Vegetation % Cover: 40.67

Reference Area % Cover: 10.2

90% of Reference Area? Yes

Relative % Cover of: Grasses 42.03 Forbs 13.04 Shrubs 44.93

Desirable Vegetation

Appears vigorous and self sustaining? Yes

☒ New Shoots

☐ Litter

Size: Healthy

☒ Flowers / Seeds

☐ Seedlings

Color / Vigor: Healthy

Comments Good shrub regrowth.

Undesirable Vegetation

Noxious Weeds Present? Yes Cheatgrass interspersed but is minor.

Undesirable Species <5% of Total Cover: < 5%

EROSION

Erosion Issues: None

BLM RECLAMATION TIMETABLE:

% Area in Use: 50

% Monitor: 0

% Acceptable: 50

% Reclamation Complete: 0

% Restored: 0

Additional work needed to obtain 90% cover:

Shrub regrowth excellent, not in use portion looks very healthy.
Workover rig may necessitate additional reclamation.

Major Facilities Issues:

Additional Comments:

VEGETATION DATA**Vegetation Cover**

Species	First Hit % Cover				Ground Hit % Cover			
	T1	T2	T3	Mean	T1	T2	T3	Mean
Acceptable Species								
Agropyron cristatum	4			1.33	0			0
Chrysothamnus viscidiflorus	2	2	58	20.67	0	0	2	0.67
Elymus trachycaulus	6	2		2.67	0	0		0
Medicago sativa			6	2			0	0
Pascopyrum smithii	16	22	2	13.33	0	2	2	1.33
Unknown Grass 3		2	0	0.67		2	0	0.67
Total Acceptable Cover	28	28	66	40.67	0	4	4	2.67
Undesirable Species								
Bromus tectorum	4			1.33	0			0
Lactuca serriola	6	6	0	4	4	0	0	1.33
Total Undesirable Cover	10	6	0	5.33	4	0	0	1.33
Total Vegetative Cover:	38	34	66	46	4	4	4	4
Litter	20	46	26	30.67	54	74	84	70.67
Rock	6	0	0	2	8	0	0	2.67
Standing Litter	6			2	0			0
Total Non-Vegetative Cover	32	46	26	34.67	62	74	84	73.34
Total Cover	70	80	92	80.67	66	78	88	77.34
Bare	30	20	8	19.33	34	22	12	22.67

Species List

Species	Frequency on Pad	Relative % Cover		
	# of occurrences out of 3 possible	Grasses	Forbs	Shrubs
Achnatherum hymenoides	1	42.03		
Agropyron cristatum	1		13.04	
Artemisia tridentata	1			44.93
Atriplex canescens	Observed			
Atriplex confertifolia	1			
Bromus arvensis	1			
Bromus inermis	Observed			
Bromus tectorum	1			
Chenopodium album	Observed			
Chrysothamnus viscidiflorus	3			
Dactylis glomerata	Observed			
Elymus lanceolatus	Observed			
Elymus trachycaulus	2			
Grindelia squarrosa	Observed			
Lactuca serriola	3			
Lepidium perfoliatum	1			
Melilotus officinalis	2			
Medicago sativa	1			
Pascopyrum smithii	3			
Pseudoroegneria spicata	Observed			
Tragopogon dubius	1			

Transect	% Slope	Aspect
1	15	S
2	1	S
3	5	NW

Unknown Atriplex 1	Observed
Unknown Grass 3	2
Unknown Thistle 1	1
Unknown Thistle 2	Observed
Zuckia brandegeei	Observed

DOE 3-W-21



DOE 3-W-21 North

Photo Date: 7/22/2008

X: 2292160.03309

Y: 1621481.07897



DOE 3-W-21 East

Photo Date: 7/22/2008

X: 2292064.63412

Y: 1621522.51285



DOE 3-W-21 South

Photo Date: 7/22/2008

X: 2292144.39445

Y: 1621685.00175



DOE 3-W-21 West

Photo Date: 7/22/2008

X: 2292153.86380

Y: 1621695.88892



DOE 3-W-21 Sample Point 1

Photo Date: 7/22/2008

X: 2292118.73500

Y: 1621713.00092



DOE 3-W-21 Sample Point 2

Photo Date: 7/22/2008

X: 2292127.98198

Y: 1621663.43823



DOE 3-W-21 Sample Point 3

Photo Date: 7/22/2008

X: 2292151.87082

Y: 1621498.14274

Well ID: DOE 3-W-29

BLM Land

Monitor Date: 7/23/2008

Observers: N. Weisenbacher

Reclamation Status as of July 2008: Reclaimed

Approximate Seed Date:

Vegetation Community: Pinon-Juniper Woodland South Aspect

VEGETATION

Total Acceptable Vegetation % Cover: 38.01

Reference Area % Cover: 10.2

90% of Reference Area? Yes

Relative % Cover of: Grasses 85.94 Forbs 7.016 Shrubs 7.016

Desirable Vegetation

Appears vigorous and self sustaining? Yes

☒ New Shoots

☒ Litter

Size: Healthy

☒ Flowers / Seeds

☒ Seedlings

Color / Vigor: Healthy

Comments Overall really good cover and growth in most areas.

Undesirable Vegetation

Noxious Weeds Present? Yes Some cheatgrass, but very little. Erodium and halogeton.

Undesirable Species <5% of Total Cover: < 5%

EROSION

Erosion Issues: Minor

BLM RECLAMATION TIMETABLE:

% Area in Use: 10

% Monitor: 50

% Acceptable: 40

% Reclamation Complete: 0

% Restored: 0

Additional work needed to obtain 90% cover:

Some areas somewhat sparse. Seed small, redisturbed area and watch.

Major Facilities Issues:

Additional Comments:

VEGETATION DATA**Vegetation Cover**

Species	First Hit % Cover				Ground Hit % Cover			
	T1	T2	T3	Mean	T1	T2	T3	Mean
Acceptable Species								
Agropyron cristatum	32	26	10	22.67	20	20	2	14
Atriplex confertifolia		8		2.67		0		0
Elymus lanceolatus	2			0.67	0			0
Elymus trachycaulus		2	6	2.67		2	4	2
Melilotus officinalis			8	2.67			4	1.33
Pascopyrum smithii	8		2	3.33	0		0	0
Thinopyrum intermedium	4			1.33	0			0
Thinopyrum ponticum		6		2		0		0
Total Acceptable Cover	46	42	26	38.01	20	22	10	17.33
Total Vegetative Cover:	46	42	26	38.01	20	22	10	17.33
Litter	52	52	18	40.67	76	72	30	59.33
Rock	0	0	2	0.67	2	0	2	1.33
Total Non-Vegetative Cover	52	52	20	41.34	78	72	32	60.66
Total Cover	98	94	46	79.35	98	94	42	77.99
Bare	2	6	54	20.67	2	6	58	22

Species List

Species	Frequency on Pad	Relative % Cover		
	# of occurrences out of 3 possible	Grasses	Forbs	Shrubs
Achnatherum hymenoides	Observed	85.94		
Agropyron cristatum	3		7.016	
Atriplex canescens	Observed			7.016
Atriplex confertifolia	1			
Bassia scoparia	Observed			
Bromus arvensis	1			
Bromus tectorum	Observed			
Camelina rumelica	Observed			
Chenopodium album	Observed			
Chrysothamnus viscidiflorus	Observed			
Elymus lanceolatus	1			
Elymus trachycaulus	2			
Erodium cicutarium	1			
Ericameria nauseosa	Observed			
Eremopyrum triticeum	Observed			
Halogeton glomeratus	Observed			
Lactuca serriola	Observed			
Melilotus officinalis	1			
Medicago sativa	1			
Pascopyrum smithii	2			
Sarcobatus vermiculatus	Observed			
Thinopyrum intermedium	1			
Thinopyrum ponticum	1			
Tragopogon dubius	Observed			
Unknown Forb 12	Observed			

Transect	% Slope	Aspect
1	25	NE
2	20	E/NE
3	10	S/SW

Unknown Panicum 1 Observed

DOE 3-W-29



DOE 3-W-29 North

Photo Date: 7/23/2008

X: 2288055.19325 Y: 1613114.25285



DOE 3-W-29 East

Photo Date: 7/23/2008

X: 2287831.76059 Y: 1613291.51165



DOE 3-W-29 South

Photo Date: 7/23/2008

X: 2287933.00922 Y: 1613332.98241



DOE 3-W-29 West

Photo Date: 7/23/2008

X: 2288039.30145 Y: 1613242.77232



DOE 3-W-29 Sample Point 1

Photo Date: 7/23/2008

X: 2287936.90587 Y: 1613121.16826



DOE 3-W-29 Sample Point 2

Photo Date: 7/23/2008

X: 2287832.95824 Y: 1613230.71898



DOE 3-W-29 Sample Point 3

Photo Date: 7/23/2008

X: 2287935.63115 Y: 1613316.15586

Well ID: DOE PM2-31

BLM Land

Monitor Date: 7/24/2008

Observers: N. Weisenbacher

Reclamation Status as of July 2008: Not reclaimed

Drill rig on site.

Approximate Seed Date:

Vegetation Community: Pinon-Juniper Woodland South Aspect

VEGETATION

Reference Area % Cover: 10.2

Desirable Vegetation

Appears vigorous and self sustaining?

☐ New Shoots

☐ Litter

Size:

☐ Flowers / Seeds

☐ Seedlings

Color / Vigor:

Comments

Undesirable Vegetation

Noxious Weeds Present?

Undesirable Species <5% of Total Cover:

EROSION

Erosion Issues: None

BLM RECLAMATION TIMETABLE:

Additional work needed to obtain 90% cover:

% Area in Use: 100

% Monitor: 0

% Acceptable: 0

% Reclamation Complete: 0

% Restored: 0

Major Facilities Issues:

Additional Comments: One photo only.

VEGETATION DATA

Vegetation Cover	First Hit % Cover					Ground Hit % Cover			
	Species	T1	T2	T3	Mean	T1	T2	T3	Mean

No Data

Species List

DOE PM2-31



DOE PM2-31

Photo Date: 7/24/2008

X: GPS data not available Y:

Well ID: GM 11-12

Monitor Date: 8/5/2008

Observers: N. Weisenbacher

Reclamation Status as of July 2008: Reclaimed

Much of area paved.

Approximate Seed Date: 2002

Vegetation Community: Pasture / Agricultural

Seems to be pasture and much of area paved.

VEGETATION

Total Acceptable Vegetation % Cover: 6.67

Reference Area % Cover: n/a

Relative % Cover of: Grasses 28.56 Forbs 42.84 Shrubs 28.56

Desirable Vegetation

Appears vigorous and self sustaining? No

☐ New Shoots

☐ Litter

Size:

☐ Flowers / Seeds

☐ Seedlings

Color / Vigor:

Comments Shrub regrowth ok, but no real grass or forbs.

Undesirable Vegetation

Noxious Weeds Present? Yes Cheatgrass and chicory interspersed across site. Kochia, tamarisk and bindweed present.

Undesirable Species <5% of Total Cover: > 5%

EROSION

Erosion Issues: None

BLM RECLAMATION TIMETABLE:

% Area in Use:	10
% Monitor:	90
% Acceptable:	0
% Reclamation Complete:	0
% Restored:	0

Additional work needed to obtain 90% cover:

Weed control and overseed with desirables. Much of area paved- release from reclamation obligation?

Major Facilities Issues:

Additional Comments: Much of area paved.

VEGETATION DATA**Vegetation Cover**

Species	First Hit % Cover				Ground Hit % Cover			
	T1	T2	T3	Mean	T1	T2	T3	Mean
Acceptable Species								
Chrysothamnus viscidiflorus	0		6	2	0		0	0
Sarcobatus vermiculatus			14	4.67			0	0
Total Acceptable Cover	0		20	6.67	0		0	0
Undesirable Species								
Bassia scoparia	10	2	2	4.67	0	0	0	0
Bromus tectorum	0		6	2	0		0	0
Eremopyrum triticeum	10	4	0	4.67	4	0	0	1.33
Lepidium perfoliatum	0		16	5.33	0		2	0.67
Total Undesirable Cover	20	6	24	16.67	4	0	2	2
Total Vegetative Cover:	20	6	44	23.34	4	0	2	2
Litter	22	22	34	26	30	24	64	39.33
Rock	8	0	0	2.67	10	0	4	4.67
Total Non-Vegetative Cover	30	22	34	28.67	40	24	68	44
Total Cover	50	28	78	52.01	44	24	70	46
Bare	50	72	22	48	56	76	30	54

Species List

Species	Frequency on Pad	Relative % Cover		
	# of occurrences out of 3 possible	Grasses	Forbs	Shrubs
Agropyron cristatum	Observed	28.56		
Artemisia tridentata	Observed		42.84	
Bassia scoparia	3			28.56
Bromus tectorum	2			
Chenopodium album	Observed			
Chrysothamnus viscidiflorus	2			
Cichorium intybus	Observed			
Convolvulus arvensis	Observed			
Eremopyrum triticeum	3			
Hordeum jubatum	Observed			
Lactuca serriola	Observed			
Lepidium perfoliatum	2			
Melilotus officinalis	Observed			
Medicago sativa	Observed			
Polygonum aviculare	Observed			
Salsola kali	Observed			
Sarcobatus vermiculatus	1			
Tamarix ramosissima	Observed			
Ulmus sp.	Observed			
Unknown Panicum 1	Observed			

Transect	% Slope	Aspect
1	0	(NE)
2	28	N
3	0	(N/NE)

GM 11-12



GM 11-12 North

Photo Date: 8/5/2008

X: 2275660.83842 Y: 1601876.01307



GM 11-12 East

Photo Date: 8/5/2008

X: 2275580.86392 Y: 1601992.04880



GM 11-12 South

Photo Date: 8/5/2008

X: 2275745.23170 Y: 1602043.62257



GM 11-12 West

Photo Date: 8/5/2008

X: 2275878.38683 Y: 1601953.94746



GM 11-12 Sample Point 1

Photo Date: 8/5/2008

X: 2275732.70319 Y: 1601939.21825



GM 11-12 Sample Point 2

Photo Date: 7/27/2008

X: 2275734.83855 Y: 1601837.45159



GM 11-12 Sample Point 3

Photo Date: 8/5/2008

X: 2275828.15662 Y: 1601894.37274

Well ID: GM 12-32

Monitor Date: 7/26/2008

Observers: N. Weisenbacher

Reclamation Status as of July 2008: Reclaimed

Approximate Seed Date:

Vegetation Community: Pinon-Juniper Woodland South Aspect

VEGETATION

Total Acceptable Vegetation % Cover: 16

Reference Area % Cover: 10.2

90% of Reference Area? Yes

Relative % Cover of: Grasses 59.98 Forbs 39.99 Shrubs 0

Desirable Vegetation

Appears vigorous and self sustaining? Yes

☒ New Shoots

☐ Litter

Size: Healthy

☒ Flowers / Seeds

☒ Seedlings

Color / Vigor: Healthy

Comments Sparse or nonexistent in S/SW portion, shrubs good.

Undesirable Vegetation

Noxious Weeds Present? No Kochia present.

Undesirable Species <5% of Total Cover: > 5%

EROSION

Erosion Issues: None

BLM RECLAMATION TIMETABLE:

% Area in Use: 30

% Monitor: 70

% Acceptable: 0

% Reclamation Complete: 0

% Restored: 0

Additional work needed to obtain 90% cover:

Areas are redisturbed and just kochia growing. Overseed.

Major Facilities Issues:

Additional Comments:

VEGETATION DATA

Vegetation Cover

Species	First Hit % Cover				Ground Hit % Cover			
	T1	T2	T3	Mean	T1	T2	T3	Mean
Acceptable Species								
Elymus trachycaulus	12	6		6	2	4		2
Medicago sativa		6		2		0		0
Pascopyrum smithii	6	8		4.67	0	6		2
Thinopyrum ponticum	4	6		3.33	2	2		1.33
Total Acceptable Cover	22	26		16	4	12		5.33
Undesirable Species								
Bassia scoparia			20	6.67			10	3.33
Polygonum erectum			2	0.67			2	0.67
Total Undesirable Cover			22	7.34			12	4
Total Vegetative Cover:	22	26	22	23.34	4	12	12	9.33
Litter	46	10	8	21.33	64	18	10	30.67
Rock	8	6	4	6	8	8	4	6.67
Standing Litter	2		2	1.33	0		0	0
Total Non-Vegetative Cover	56	16	14	28.66	72	26	14	37.34
Total Cover	78	42	36	52	76	38	26	46.67
Bare	22	58	64	48	24	62	74	53.33

Species List

Species	Frequency on Pad	Relative % Cover		
	# of occurrences out of 3 possible	Grasses	Forbs	Shrubs
Atriplex canescens	Observed	59.98		
Bassia scoparia	1		39.99	
Bromus arvensis	Observed			0
Bromus inermis	Observed			
Elymus lanceolatus	1			
Elymus trachycaulus	2			
Ericameria nauseosa	1	1	10	E/SE
Grindelia squarrosa	Observed	2	4	E
Lactuca serriola	1	3	5	E
Lepidium perfoliatum	Observed			
Melilotus officinalis	Observed			
Medicago sativa	1			
Pascopyrum smithii	2			
Polygonum aviculare	Observed			
Polygonum erectum	1			
Psathyrostachys juncea	Observed			
Salsola kali	Observed			
Taraxacum officinale	Observed			
Thinopyrum intermedium	Observed			
Thinopyrum ponticum	2			
Tragopogon dubius	Observed			
Unknown Panicum 1	1			
Unknown Panicum 2	Observed			

GM 12-32



GM 12-32 North

Photo Date: 7/26/2008

X: 2255348.85279 Y: 1611635.47473



GM 12-32 East

Photo Date: 7/26/2008

X: 2255219.94531 Y: 1611698.55620



GM 12-32 South

Photo Date: 7/26/2008

X: 2255264.66809 Y: 1611814.82796



GM 12-32 West

Photo Date: 7/26/2008

X: 2255355.78261 Y: 1611777.03067



GM 12-32 Sample Point 1

Photo Date: 7/26/2008

X: 2255431.38390 Y: 1611669.02974



GM 12-32 Sample Point 2

Photo Date: 7/26/2008

X: 2255339.01389 Y: 1611674.82129



GM 12-32 Sample Point 3

Photo Date: 7/26/2008

X: 2255264.38610 Y: 1611734.60801

Well ID: GM 202-33

Monitor Date: 7/26/2008

Observers: N. Weisenbacher

Reclamation Status as of July 2008: Reclaimed

Flat part not reclaimed?

Approximate Seed Date:

Vegetation Community: Pinon-Juniper Woodland South Aspect

VEGETATION

Total Acceptable Vegetation % Cover: 12

Reference Area % Cover: 10.2

90% of Reference Area? Yes

Relative % Cover of: Grasses 67.41 Forbs 32.54 Shrubs 0

Desirable Vegetation

Appears vigorous and self sustaining? Yes

☒ New Shoots

☐ Litter

Size: Healthy

☒ Flowers / Seeds

☐ Seedlings

Color / Vigor: Healthy

Comments Healthy but weeds dominate.

Undesirable Vegetation

Noxious Weeds Present? Yes Cheatgrass interspersed throughout site. Kochia and erodium present.

Undesirable Species <5% of Total Cover: > 5%

EROSION

Erosion Issues: Rills >3"

Erosion photo 1: rill on southwest side looking northeast
Erosion photo 2: same

BLM RECLAMATION TIMETABLE:

% Area in Use: 10

% Monitor: 90

% Acceptable: 0

% Reclamation Complete: 0

% Restored: 0

Additional work needed to obtain 90% cover:

Weed control and overseed. Flat part not reclaimed?

Major Facilities Issues:

Additional Comments: No GPS point.

VEGETATION DATA

Vegetation Cover

Species	First Hit % Cover				Ground Hit % Cover			
	T1	T2	T3	Mean	T1	T2	T3	Mean
Acceptable Species								
Bromus arvensis	10	6		5.33	6	8		4.67
Pascopyrum smithii	8	12		6.67	6	4		3.33
Total Acceptable Cover	18	18		12	12	12		8
Undesirable Species								
Bassia scoparia	0		18	6	0		6	2
Bromus tectorum		20		6.67		10		3.33
Eremopyrum triticeum	2			0.67	2			0.67
Helianthus annuus		8		2.67		0		0
Lepidium perfoliatum	0	2		0.67	0	0		0
Total Undesirable Cover	2	30	18	16.68	2	10	6	6
Total Vegetative Cover:	20	48	18	28.68	14	22	6	14
Litter	60	34	2	32	64	70	2	45.33
Rock	2	2	4	2.67	2	2	4	2.67
Standing Litter		12		4		0		0
Total Non-Vegetative Cover	62	48	6	38.67	66	72	6	48
Total Cover	82	96	24	67.35	80	94	12	62
Bare	18	4	76	32.67	20	6	88	38

Species List

Species	Frequency on Pad	Relative % Cover		
	# of occurrences out of 3 possible	Grasses	Forbs	Shrubs
Agropyron cristatum	Observed	67.41		
Atriplex confertifolia	Observed		32.54	
Bassia scoparia	2			0
Bromus arvensis	2			
Bromus inermis	Observed			
Bromus tectorum	1			
Chenopodium album	Observed	1	5	NE
Chrysothamnus viscidiflorus	Observed	2	25	N/NE
Elymus lanceolatus	Observed	3	Flat	NE
Erodium cicutarium	Observed			
Eremopyrum triticeum	1			
Gutierrezia sarothrae	Observed			
Helianthus annuus	1			
Hordeum jubatum	Observed			
Lactuca serriola	1			
Lepidium perfoliatum	2			
Medicago sativa	Observed			
Pascopyrum smithii	2			
Sarcobatus vermiculatus	Observed			
Tragopogon dubius	Observed			
Unknown Fabaceae	8			
Unknown Shrub	7			

GM 202-33



GM 202-33 North
Photo Date: 7/26/2008



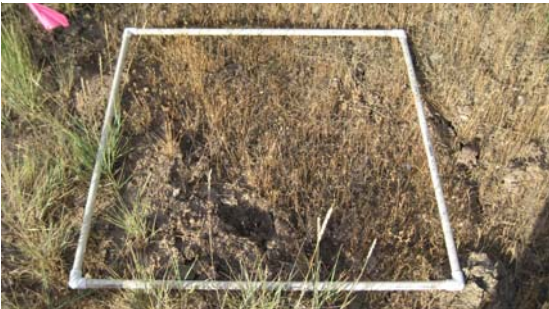
GM 202-33 East
Photo Date: 7/26/2008



GM 202-33 South
Photo Date: 7/26/2008



GM 202-33 West
Photo Date: 7/26/2008



GM 202-33 Sample Point 1
Photo Date: 7/26/2008



GM 202-33 Sample Point 2
Photo Date: 7/26/2008



GM 202-33 Sample Point 3
Photo Date: 7/26/2008



GM 202-33 Erosion Picture 1
Photo Date: 7/26/2008

GM 202-33



GM 202-33 Erosion Picture 2

Photo Date: 7/26/2008

Well ID: GM 203-33

Monitor Date: 7/25/2008

Observers: N. Weisenbacher

Reclamation Status as of July 2008: Reclaimed

Approximate Seed Date:

Vegetation Community: Pinon-Juniper Woodland South Aspect

VEGETATION

Total Acceptable Vegetation % Cover: 36.66

Reference Area % Cover: 10.2

90% of Reference Area? Yes

Relative % Cover of: Grasses 82.15 Forbs 3.572 Shrubs 14.29

Desirable Vegetation

Appears vigorous and self sustaining? Yes

☒ New Shoots

☒ Litter

Size: Healthy

☒ Flowers / Seeds

☒ Seedlings

Color / Vigor: Healthy

Comments Some sparse areas but overall healthy.

Undesirable Vegetation

Noxious Weeds Present? Yes Some cheatgrass interspersed, mostly on west portion.

Undesirable Species <5% of Total Cover: < 5%

EROSION

Erosion Issues: None

BLM RECLAMATION TIMETABLE:

% Area in Use: 5

% Monitor: 20

% Acceptable: 75

% Reclamation Complete: 0

% Restored: 0

Additional work needed to obtain 90% cover:

Overseed sparser areas, monitor cheatgrass.

Major Facilities Issues:

Additional Comments:

VEGETATION DATA

Vegetation Cover

Species	First Hit % Cover				Ground Hit % Cover			
	T1	T2	T3	Mean	T1	T2	T3	Mean
Acceptable Species								
Agropyron cristatum	4	8	16	9.33	0	8	10	6
Atriplex canescens		16		5.33		0		0
Bromus arvensis	2			0.67	0			0
Bromus inermis	0	4	2	2	0	4	0	1.33
Leymus cinereus		0	30	10		0	14	4.67
Melilotus officinalis	4			1.33	0			0
Pascopyrum smithii		6	18	8		2	8	3.33
Total Acceptable Cover	10	34	66	36.66	0	14	32	15.33
Undesirable Species								
Bromus tectorum		2		0.67		0		0
Total Undesirable Cover		2		0.67		0		0
Total Vegetative Cover:	10	36	66	37.33	0	14	32	15.33
Litter	22	24	30	25.33	22	44	64	43.33
Rock	10	4	0	4.67	12	4	0	5.33
Total Non-Vegetative Cover	32	28	30	30	34	48	64	48.66
Total Cover	42	64	96	67.33	34	62	96	63.99
Bare	58	36	4	32.67	66	38	4	36

Species List

Species	Frequency on Pad	Relative % Cover		
	# of occurrences out of 3 possible	Grasses	Forbs	Shrubs
Achnatherum hymenoides	Observed	82.15		
Agropyron cristatum	3		3.572	
Astragalus cicer	Observed			14.29
Atriplex canescens	1			
Atriplex confertifolia	1			
Bassia scoparia	Observed			
Bromus arvensis	1	1	40	E
Bromus inermis	3	2	18	E/SE
Bromus tectorum	1	3	6	E/SE
Chenopodium album	Observed			
Chrysothamnus viscidiflorus	Observed			
Elymus trachycaulus	Observed			
Grindelia squarrosa	Observed			
Lactuca serriola	Observed			
Leymus cinereus	2			
Lepidium perfoliatum	Observed			
Machaeranthera grindelioides	Observed			
Melilotus officinalis	1			
Medicago sativa	1			
Pascopyrum smithii	2			
Penstemon palmeri	Observed			
Polygonum aviculare	Observed			

Ratibida columnifera	Observed
Salsola kali	Observed
Tragopogon dubius	Observed

GM 203-33



GM 203-33 North

Photo Date: 7/25/2008

X: 2262752.31474 Y: 1608105.45989



GM 203-33 East

Photo Date: 7/25/2008

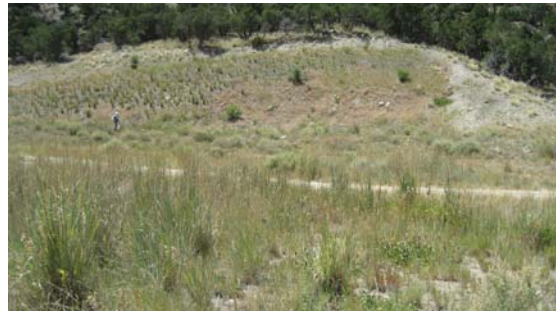
X: 2262664.54607 Y: 1608150.49753



GM 203-33 South

Photo Date: 7/25/2008

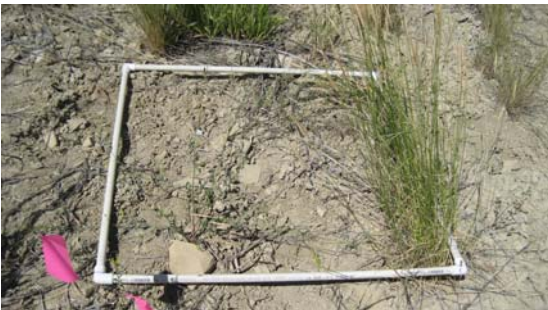
X: 2262772.19795 Y: 1608335.95995



GM 203-33 West

Photo Date: 7/25/2008

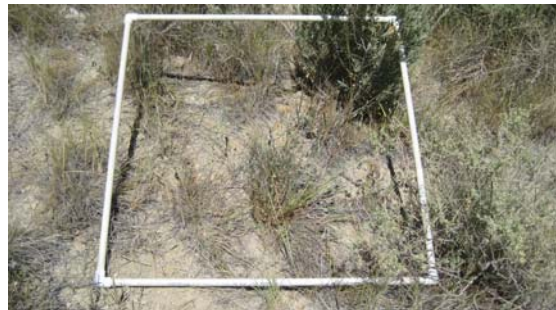
X: 2262879.75028 Y: 1608305.07881



GM 203-33 Sample Point 1

Photo Date: 7/25/2008

X: 2262662.15390 Y: 1608206.54720



GM 203-33 Sample Point 2

Photo Date: 7/25/2008

X: 2262725.79963 Y: 1608302.47448



GM 203-33 Sample Point 3

Photo Date: 7/25/2008

X: 2262830.72302 Y: 1608285.18309