

## **GROUNDWATER MONITORING REPORT DECEMBER 2008**

---

### **EATON CATTLE CO. #1-18**

In December, 2008, LT Environmental, Inc. (LTE) conducted a quarterly groundwater sampling event, on behalf of Fountainhead Resources LTD, at the Eaton Cattle Co. #1-18 Tank Battery. This report presents the analytical results for this sampling event. Site history and a description of excavation activities were provided in the Form 19 and Form 27 previously submitted to the Colorado Oil and Gas Conservation Commission in January 2008 and February 2008, respectively.

Groundwater samples have been collected from monitoring wells at the site in March, May, June, September, and December 2008 as summarized in Table 1. Monitoring wells MW01 through MW06 were installed surrounding the tank battery excavation in late March 2008 (Figure 1). Based on the analytical results from MW01 through MW06, monitoring wells MW07 through MW09 were installed and sampled in April 2008. Benzene concentrations in MW08 and MW09 resulted in the installation of MW10 through MW13 in May 2008. At the request of the landowner, MW14 was installed in July 2008 within the excavated area near the location of groundwater grab samples collected during initial site remediation activities. Monitoring wells MW01, MW03, MW05, MW07, MW09, MW11, MW12, MW13 and MW14 were included in the December 2008 sampling event.

Depth to groundwater in each well was used to calculate well-specific purge volumes. Following purging, groundwater samples were collected and preserved on ice. Samples were then submitted under strict chain of custody protocol to Summit Scientific Laboratory, Inc. of Golden, Colorado for analysis of benzene, toluene, ethylbenzene, and total xylenes (BTEX) by United States Environmental Protection Agency Method 8260B.

Based on the collective analytical results, point of compliance (POC) wells have been established at this site (MW-10 through MW13). In addition, it appears that the excavation has resulted in lowering the concentrations of BTEX constituents across the site to below the respective Colorado Groundwater Quality Standards (CGWQS). During the June, September, and December 2008 sampling events, none of the samples exhibited concentrations of BTEX above the CGWQS. Additionally, no BTEX constituent was detected at concentrations in excess of the laboratory method detection limits. Based on the December 2008 analytical results, BTEX concentrations are below the CGWQS and POC wells are in place (MW10 through MW13). Analytical results are summarized in Table 1. The laboratory analytical report is attached as an appendix.

LTE will continue to conduct quarterly groundwater monitoring events of all the wells at the site. The next quarterly groundwater sampling event is scheduled for March 2009.



**TABLE**



**TABLE 1**  
**GROUNDWATER SAMPLE ANALYTICAL DATA**  
**EATON CATTLE CO. 1-18**  
**FOUNTAINHEAD RESOURCES LTD**

SAMPLE ID	SAMPLE DATE	DEPTH (feet bgs)	BENZENE (ug/L)	TOLUENE (ug/L)	ETHYLBENZENE (ug/L)	XYLENES (ug/L)
MW01	3/28/2008	6.35	2.3	<1.0	<1.0	<1.0
	5/16/2008	5.62	<1.0	<1.0	<1.0	<1.0
	9/23/2008	4.49	4.7	<1.0	<1.0	6.5
	12/10/2008	6.33	<1.0	<1.0	<1.0	<1.0
MW02	3/28/2008	5.83	<1.0	<1.0	<1.0	<1.0
	5/16/2008	5.12	<1.0	<1.0	<1.0	<1.0
	9/23/2008	NM	NS	NS	NS	NS
MW03	3/28/2008	3.36	<b>66</b>	170	4.8	150
	5/16/2008	2.62	<1.0	9	<1.0	17
	6/25/2008	6.43	<1.0	<1.0	<1.0	2.7
	9/23/2008	2.5	<1.0	<1.0	<1.0	<1.0
	12/10/2008	4.1	<1.0	<1.0	<1.0	<1.0
MW04	3/28/2008	3.95	<1.0	<1.0	<1.0	6
	5/16/2008	3.23	<1.0	<1.0	<1.0	<1.0
MW05	3/28/2008	3.51	<1.0	<1.0	<1.0	<1.0
	5/16/2008	NM	NS	NS	NS	NS
	9/23/2008	1.86	<1.0	<1.0	<1.0	<1.0
	12/10/2008	3.39	<1.0	<1.0	<1.0	<1.0
MW06	3/28/2008	3.58	<1.0	<1.0	<1.0	<1.0
	5/16/2008	NM	NS	NS	NS	NS
MW07	4/22/2008	3.76	<b>5.8</b>	75	20	710
	5/16/2008	1.03	<1.0	7	<1.0	140
	9/23/2008	1.93	<1.0	<1.0	<1.0	38
	12/10/2008	3.59	<1.0	<1.0	<1.0	<1.0
MW08	4/22/2008	4.24	<b>17</b>	4	<1.0	7
	5/16/2008	1.15	<1.0	<1.0	<1.0	<1.0
	6/25/2008	4.07	<1.0	<1.0	<1.0	<1.0
MW09	4/22/2008	5.36	<b>29</b>	<1.0	<1.0	<1.0
	5/16/2008	4.54	<b>6.8</b>	<1.0	<1.0	<1.0
	6/25/2008	7.26	<1.0	<1.0	<1.0	<1.0
	9/23/2008	3.52	<1.0	<1.0	<1.0	<1.0
	12/10/2008	5.3	<1.0	<1.0	<1.0	<1.0
MW10	5/16/2008	NM	2.1	49	3.8	140
MW11	5/16/2008	NM	2.1	<1.0	<1.0	<1.0
	9/23/2008	3.09	<1.0	<1.0	<1.0	<1.0
	12/10/2008	4.96	<1.0	<1.0	<1.0	<1.0
MW12	5/16/2008	NM	<b>13</b>	<1.0	<1.0	<1.0
	6/25/2008	7.73	<1.0	<1.0	<1.0	<1.0
	9/23/2008	3.62	<1.0	<1.0	<1.0	<1.0
	12/10/2008	5.56	<1.0	<1.0	<1.0	<1.0
MW13	5/16/2008	NM	<b>28</b>	<1.0	<1.0	<1.0
	6/25/2008	7.49	<1.0	<1.0	<1.0	3.8
	9/23/2008	4.02	<1.0	<1.0	<1.0	<1.0
	12/10/2008	5.87	<1.0	<1.0	<1.0	<1.0
MW14	8/21/2008	NM	<1.0	<1.0	<1.0	<1.0
	9/23/2008	2.87	<1.0	<1.0	<1.0	<1.0
	12/10/2008	4.43	<1.0	<1.0	<1.0	<1.0

ug/L - micrograms per liter

bgs - below ground surface

< - less than stated laboratory detection limit

**Bold** indicates the value exceeds the Colorado Groundwater Quality Standard

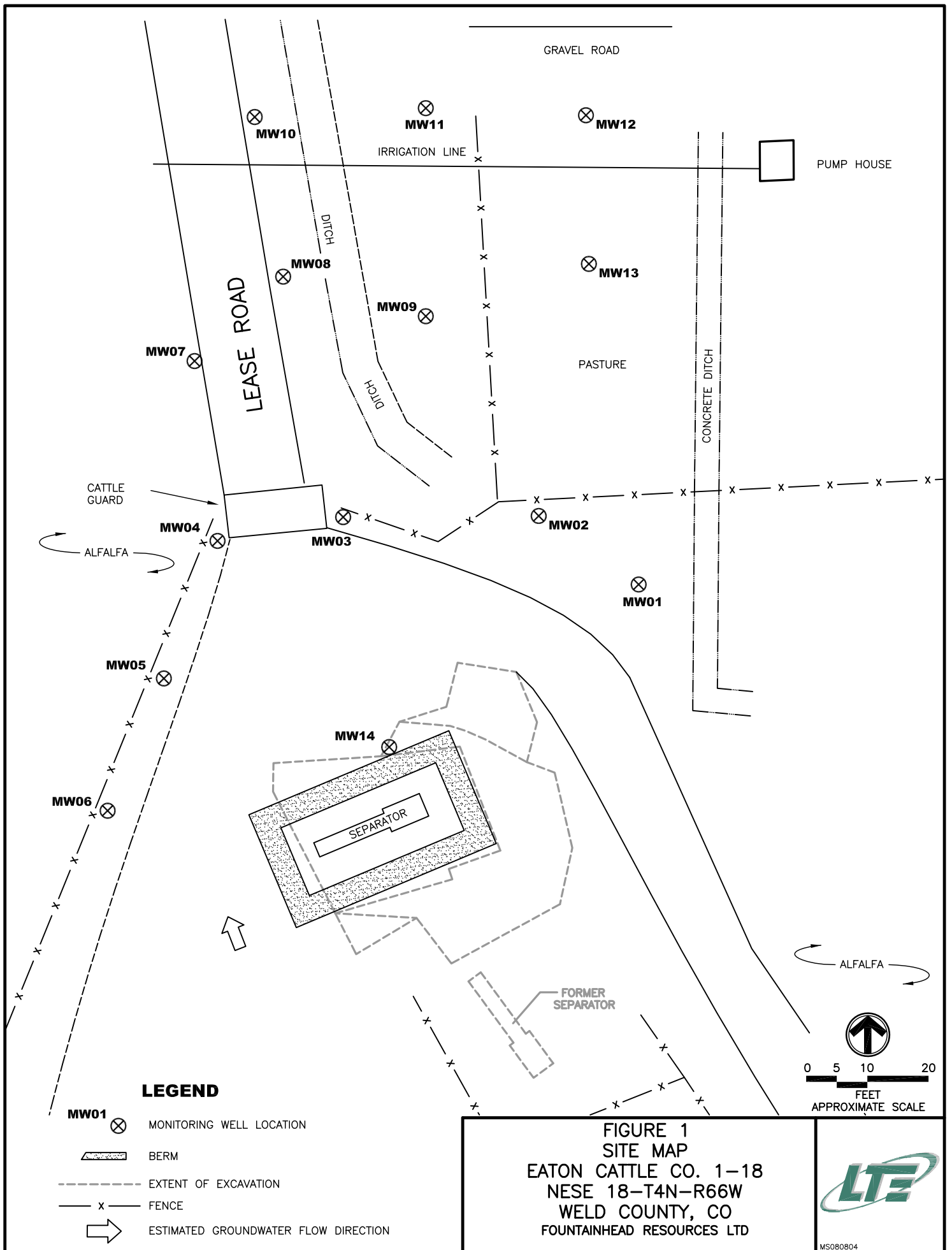
NS - not sampled

NM - not measured



**FIGURE**





**APPENDIX**  
**ANALYTICAL REPORT**



# Summit Scientific

---

741 Corporate Circle – Suite I ♦ Golden, Colorado 80401

303.277.9310 - laboratory ♦ 303.374.5933 - fax

December 12, 2008

Steve Compton  
LT Environmental, Inc.  
4600 West 60th Avenue  
Arvada, CO 80003  
RE: MS - Eaton Cattle Co 1-18

Enclosed are the results of analyses for samples received by Summit Scientific on 12/10/08 16:49. If you have any questions concerning this report, please feel free to contact me.

Sincerely,

A handwritten signature in black ink, appearing to be 'BS' with a long, sweeping horizontal line extending to the right.

Ben Shrewsbury  
Vice President / Laboratory Director

LT Environmental, Inc.  
4600 West 60th Avenue  
Arvada CO, 80003

Project: MS - Eaton Cattle Co 1-18

Project Number: MS 0808  
Project Manager: Steve Compton

**Reported:**  
12/12/08 16:47

### ANALYTICAL REPORT FOR SAMPLES

Sample ID	Laboratory ID	Matrix	Date Sampled	Date Received
MW01	R812059-01	Water	12/10/08 11:30	12/10/08 16:49
MW03	R812059-02	Water	12/10/08 11:35	12/10/08 16:49
MW05	R812059-03	Water	12/10/08 11:40	12/10/08 16:49
MW07	R812059-04	Water	12/10/08 11:45	12/10/08 16:49
MW09	R812059-05	Water	12/10/08 11:50	12/10/08 16:49
MW11	R812059-06	Water	12/10/08 11:55	12/10/08 16:49
MW12	R812059-07	Water	12/10/08 12:00	12/10/08 16:49
MW13	R812059-08	Water	12/10/08 12:05	12/10/08 16:49
MW14	R812059-09	Water	12/10/08 12:10	12/10/08 16:49

Summit Scientific

*The results in this report apply to the samples analyzed in accordance with the chain of custody document. This analytical report must be reproduced in its entirety.*





LT Environmental, Inc.  
4600 West 60th Avenue  
Arvada CO, 80003

Project: MS - Eaton Cattle Co 1-18

Project Number: MS 0808  
Project Manager: Steve Compton

Reported:  
12/12/08 16:47

# Summit Scientific

741 Corporate Circle Suite 1 • Golden, Colorado 80401  
303-277-9310 • 303-277-9531 Fax  
Page 1 of 1

Client: LT Environmental, Inc.  
Address: 4600 West 60th Avenue  
City/State/Zip: Arvada, CO 80003  
Phone: (303) 433-9788  
Sampler Name: M. HARRISON  
Project Manager: STEVE COMPTON  
E-Mail: SCompton@LTENV.COM  
Project Name: FOUNTAINHEAD - EATON CATTLE 1-18  
Project Number: MS0808

Sample Description	Date Sampled	Time Sampled	Number of Containers	Preservative				Matrix				Analyze For:				Special Instructions							
				HCl	HNO <sub>3</sub>	None	Other (Specify)	Groundwater	Soil	Air - Canister Serial #	Other (Specify)	Total Carbon Chain	BTEX										
MW01	12-10-08	1130	2	X				X															
MW03		1135	1	X				X															
MW05		1140	1	X				X															
MW07		1145	1	X				X															
MW09		1150	1	X				X															
MW11		1155	1	X				X															
MW12		1200	1	X				X															
MW13		1205	1	X				X															
MW14		1210	1	X				X															
Relinquished by: MW				Date/Time: 12-10-08 1649				Received by: [Signature]				Date/Time: 12-10-08 1649				Turn Around Time (Check): <input checked="" type="checkbox"/> Same Day <input type="checkbox"/> 24 Hours <input type="checkbox"/> 48 Hours <input type="checkbox"/> 72 Hours <input type="checkbox"/> Standard				Notes: STANDARD			
Relinquished by:				Date/Time:				Received by:				Date/Time:				Sample Integrity: <input checked="" type="checkbox"/> Intact <input type="checkbox"/> Temperature Upon Receipt: 4.5							
Relinquished by:				Date/Time:				Received in Lab by:				Date/Time:											

www.s2scientific.com

LT Environmental, Inc.  
4600 West 60th Avenue  
Arvada CO, 80003

Project: MS - Eaton Cattle Co 1-18

Project Number: MS 0808  
Project Manager: Steve Compton

Reported:  
12/12/08 16:47

**MW01**  
**R812059-01 (Water)**

**Summit Scientific**

**Volatile Organic Compounds by EPA Method 8260B**

Date Sampled: 12/10/08 11:30

Analyte	Result	Reporting Limit	Units	Dilution	Batch	Prepared	Analyzed	Method	Notes
Benzene	ND	1.0	ug/l	1	8121109	12/11/08	12/11/08	EPA 8260B	
Toluene	ND	1.0	"	"	"	"	"	"	
Ethylbenzene	ND	1.0	"	"	"	"	"	"	
Xylenes (total)	ND	1.0	"	"	"	"	"	"	

Date Sampled: 12/10/08 11:30

Analyte	Result	Reporting Limit	Units	Dilution	Batch	Prepared	Analyzed	Method	Notes
Surrogate: 1,2-Dichloroethane-d4		104 %	77.3-121		"	"	"	"	
Surrogate: Toluene-d8		102 %	91.4-107		"	"	"	"	
Surrogate: 4-Bromofluorobenzene		102 %	85.3-109		"	"	"	"	

Summit Scientific

The results in this report apply to the samples analyzed in accordance with the chain of custody document. This analytical report must be reproduced in its entirety.



LT Environmental, Inc.  
4600 West 60th Avenue  
Arvada CO, 80003

Project: MS - Eaton Cattle Co 1-18

Project Number: MS 0808  
Project Manager: Steve Compton

Reported:  
12/12/08 16:47

**MW03**  
**R812059-02 (Water)**

**Summit Scientific**

**Volatile Organic Compounds by EPA Method 8260B**

Date Sampled: 12/10/08 11:35

Analyte	Result	Reporting Limit	Units	Dilution	Batch	Prepared	Analyzed	Method	Notes
Benzene	ND	1.0	ug/l	1	8121109	12/11/08	12/11/08	EPA 8260B	
Toluene	ND	1.0	"	"	"	"	"	"	
Ethylbenzene	ND	1.0	"	"	"	"	"	"	
Xylenes (total)	ND	1.0	"	"	"	"	"	"	

Date Sampled: 12/10/08 11:35

Analyte	Result	Reporting Limit	Units	Dilution	Batch	Prepared	Analyzed	Method	Notes
Surrogate: 1,2-Dichloroethane-d4		99.2 %	77.3-121		"	"	"	"	
Surrogate: Toluene-d8		101 %	91.4-107		"	"	"	"	
Surrogate: 4-Bromofluorobenzene		100 %	85.3-109		"	"	"	"	

Summit Scientific

The results in this report apply to the samples analyzed in accordance with the chain of custody document. This analytical report must be reproduced in its entirety.



LT Environmental, Inc.  
4600 West 60th Avenue  
Arvada CO, 80003

Project: MS - Eaton Cattle Co 1-18

Project Number: MS 0808  
Project Manager: Steve Compton

Reported:  
12/12/08 16:47

**MW05**  
**R812059-03 (Water)**

**Summit Scientific**

**Volatile Organic Compounds by EPA Method 8260B**

Date Sampled: 12/10/08 11:40

Analyte	Result	Reporting Limit	Units	Dilution	Batch	Prepared	Analyzed	Method	Notes
Benzene	ND	1.0	ug/l	1	8121109	12/11/08	12/11/08	EPA 8260B	
Toluene	ND	1.0	"	"	"	"	"	"	
Ethylbenzene	ND	1.0	"	"	"	"	"	"	
Xylenes (total)	ND	1.0	"	"	"	"	"	"	

Date Sampled: 12/10/08 11:40

Analyte	Result	Reporting Limit	Units	Dilution	Batch	Prepared	Analyzed	Method	Notes
Surrogate: 1,2-Dichloroethane-d4		106 %	77.3-121		"	"	"	"	
Surrogate: Toluene-d8		102 %	91.4-107		"	"	"	"	
Surrogate: 4-Bromofluorobenzene		100 %	85.3-109		"	"	"	"	

Summit Scientific

The results in this report apply to the samples analyzed in accordance with the chain of custody document. This analytical report must be reproduced in its entirety.



LT Environmental, Inc.  
4600 West 60th Avenue  
Arvada CO, 80003

Project: MS - Eaton Cattle Co 1-18

Project Number: MS 0808  
Project Manager: Steve Compton

**Reported:**  
12/12/08 16:47

**MW07**  
**R812059-04 (Water)**

**Summit Scientific**

**Volatile Organic Compounds by EPA Method 8260B**

Date Sampled: 12/10/08 11:45

Analyte	Result	Reporting Limit	Units	Dilution	Batch	Prepared	Analyzed	Method	Notes
Benzene	ND	1.0	ug/l	1	8121109	12/11/08	12/11/08	EPA 8260B	
Toluene	ND	1.0	"	"	"	"	"	"	
Ethylbenzene	ND	1.0	"	"	"	"	"	"	
Xylenes (total)	ND	1.0	"	"	"	"	"	"	

Date Sampled: 12/10/08 11:45

Analyte	Result	Reporting Limit	Units	Dilution	Batch	Prepared	Analyzed	Method	Notes
Surrogate: 1,2-Dichloroethane-d4		102 %	77.3-121		"	"	"	"	
Surrogate: Toluene-d8		102 %	91.4-107		"	"	"	"	
Surrogate: 4-Bromofluorobenzene		102 %	85.3-109		"	"	"	"	

Summit Scientific

The results in this report apply to the samples analyzed in accordance with the chain of custody document. This analytical report must be reproduced in its entirety.



LT Environmental, Inc.  
4600 West 60th Avenue  
Arvada CO, 80003

Project: MS - Eaton Cattle Co 1-18

Project Number: MS 0808  
Project Manager: Steve Compton

Reported:  
12/12/08 16:47

**MW09**  
**R812059-05 (Water)**

**Summit Scientific**

**Volatile Organic Compounds by EPA Method 8260B**

Date Sampled: 12/10/08 11:50

Analyte	Result	Reporting Limit	Units	Dilution	Batch	Prepared	Analyzed	Method	Notes
Benzene	ND	1.0	ug/l	1	8121109	12/11/08	12/11/08	EPA 8260B	
Toluene	ND	1.0	"	"	"	"	"	"	
Ethylbenzene	ND	1.0	"	"	"	"	"	"	
Xylenes (total)	ND	1.0	"	"	"	"	"	"	

Date Sampled: 12/10/08 11:50

Analyte	Result	Reporting Limit	Units	Dilution	Batch	Prepared	Analyzed	Method	Notes
Surrogate: 1,2-Dichloroethane-d4		102 %	77.3-121		"	"	"	"	
Surrogate: Toluene-d8		102 %	91.4-107		"	"	"	"	
Surrogate: 4-Bromofluorobenzene		102 %	85.3-109		"	"	"	"	

Summit Scientific

The results in this report apply to the samples analyzed in accordance with the chain of custody document. This analytical report must be reproduced in its entirety.



LT Environmental, Inc.  
4600 West 60th Avenue  
Arvada CO, 80003

Project: MS - Eaton Cattle Co 1-18

Project Number: MS 0808  
Project Manager: Steve Compton

Reported:  
12/12/08 16:47

**MW11**  
**R812059-06 (Water)**

**Summit Scientific**

**Volatile Organic Compounds by EPA Method 8260B**

Date Sampled: 12/10/08 11:55

Analyte	Result	Reporting Limit	Units	Dilution	Batch	Prepared	Analyzed	Method	Notes
Benzene	ND	1.0	ug/l	1	8121109	12/11/08	12/11/08	EPA 8260B	
Toluene	ND	1.0	"	"	"	"	"	"	
Ethylbenzene	ND	1.0	"	"	"	"	"	"	
Xylenes (total)	ND	1.0	"	"	"	"	"	"	

Date Sampled: 12/10/08 11:55

Analyte	Result	Reporting Limit	Units	Dilution	Batch	Prepared	Analyzed	Method	Notes
Surrogate: 1,2-Dichloroethane-d4		105 %	77.3-121		"	"	"	"	
Surrogate: Toluene-d8		101 %	91.4-107		"	"	"	"	
Surrogate: 4-Bromofluorobenzene		101 %	85.3-109		"	"	"	"	

Summit Scientific

The results in this report apply to the samples analyzed in accordance with the chain of custody document. This analytical report must be reproduced in its entirety.



LT Environmental, Inc.  
4600 West 60th Avenue  
Arvada CO, 80003

Project: MS - Eaton Cattle Co 1-18

Project Number: MS 0808  
Project Manager: Steve Compton

Reported:  
12/12/08 16:47

**MW12**  
**R812059-07 (Water)**

**Summit Scientific**

**Volatile Organic Compounds by EPA Method 8260B**

Date Sampled: 12/10/08 12:00

Analyte	Result	Reporting Limit	Units	Dilution	Batch	Prepared	Analyzed	Method	Notes
Benzene	ND	1.0	ug/l	1	8121109	12/11/08	12/11/08	EPA 8260B	
Toluene	ND	1.0	"	"	"	"	"	"	
Ethylbenzene	ND	1.0	"	"	"	"	"	"	
Xylenes (total)	ND	1.0	"	"	"	"	"	"	

Date Sampled: 12/10/08 12:00

Analyte	Result	Reporting Limit	Units	Dilution	Batch	Prepared	Analyzed	Method	Notes
Surrogate: 1,2-Dichloroethane-d4		106 %	77.3-121		"	"	"	"	
Surrogate: Toluene-d8		101 %	91.4-107		"	"	"	"	
Surrogate: 4-Bromofluorobenzene		102 %	85.3-109		"	"	"	"	

Summit Scientific

The results in this report apply to the samples analyzed in accordance with the chain of custody document. This analytical report must be reproduced in its entirety.





LT Environmental, Inc.  
4600 West 60th Avenue  
Arvada CO, 80003

Project: MS - Eaton Cattle Co 1-18

Project Number: MS 0808  
Project Manager: Steve Compton

Reported:  
12/12/08 16:47

**MW13**  
**R812059-08 (Water)**

**Summit Scientific**

**Volatile Organic Compounds by EPA Method 8260B**

Date Sampled: 12/10/08 12:05

Analyte	Result	Reporting Limit	Units	Dilution	Batch	Prepared	Analyzed	Method	Notes
Benzene	ND	1.0	ug/l	1	8121109	12/11/08	12/11/08	EPA 8260B	
Toluene	ND	1.0	"	"	"	"	"	"	
Ethylbenzene	ND	1.0	"	"	"	"	"	"	
Xylenes (total)	ND	1.0	"	"	"	"	"	"	

Date Sampled: 12/10/08 12:05

Analyte	Result	Reporting Limit	Units	Dilution	Batch	Prepared	Analyzed	Method	Notes
Surrogate: 1,2-Dichloroethane-d4		104 %	77.3-121		"	"	"	"	
Surrogate: Toluene-d8		101 %	91.4-107		"	"	"	"	
Surrogate: 4-Bromofluorobenzene		101 %	85.3-109		"	"	"	"	

Summit Scientific

The results in this report apply to the samples analyzed in accordance with the chain of custody document. This analytical report must be reproduced in its entirety.



LT Environmental, Inc.  
4600 West 60th Avenue  
Arvada CO, 80003

Project: MS - Eaton Cattle Co 1-18

Project Number: MS 0808  
Project Manager: Steve Compton

Reported:  
12/12/08 16:47

**MW14**  
**R812059-09 (Water)**

**Summit Scientific**

**Volatile Organic Compounds by EPA Method 8260B**

Date Sampled: 12/10/08 12:10

Analyte	Result	Reporting Limit	Units	Dilution	Batch	Prepared	Analyzed	Method	Notes
Benzene	ND	1.0	ug/l	1	8121109	12/11/08	12/11/08	EPA 8260B	
Toluene	ND	1.0	"	"	"	"	"	"	
Ethylbenzene	ND	1.0	"	"	"	"	"	"	
Xylenes (total)	ND	1.0	"	"	"	"	"	"	

Date Sampled: 12/10/08 12:10

Analyte	Result	Reporting Limit	Units	Dilution	Batch	Prepared	Analyzed	Method	Notes
Surrogate: 1,2-Dichloroethane-d4		104 %	77.3-121		"	"	"	"	
Surrogate: Toluene-d8		101 %	91.4-107		"	"	"	"	
Surrogate: 4-Bromofluorobenzene		100 %	85.3-109		"	"	"	"	

Summit Scientific

The results in this report apply to the samples analyzed in accordance with the chain of custody document. This analytical report must be reproduced in its entirety.



LT Environmental, Inc.  
4600 West 60th Avenue  
Arvada CO, 80003

Project: MS - Eaton Cattle Co 1-18

Project Number: MS 0808  
Project Manager: Steve Compton

Reported:  
12/12/08 16:47

## Volatile Organic Compounds by EPA Method 8260B - Quality Control

### Summit Scientific

Analyte	Reporting			Spike	Source		%REC		RPD	
	Result	Limit	Units	Level	Result	%REC	Limits	RPD	Limit	Notes

#### Batch 8121109 - EPA 5030 Water MS

##### Blank (8121109-BLK1)

Prepared & Analyzed: 12/11/08

Benzene	ND	1.0	ug/l							
Toluene	ND	1.0	"							
Ethylbenzene	ND	1.0	"							
Xylenes (total)	ND	1.0	"							
Surrogate: 1,2-Dichloroethane-d4	13.2		"	13.3	99.2	77.3-121				
Surrogate: Toluene-d8	13.5		"	13.3	102	91.4-107				
Surrogate: 4-Bromofluorobenzene	13.6		"	13.3	102	85.3-109				

##### LCS (8121109-BS1)

Prepared & Analyzed: 12/11/08

Benzene	26.3	1.0	ug/l	33.3	79.0	70-114				
Toluene	27.2	1.0	"	33.3	81.7	72.7-116				
Surrogate: 1,2-Dichloroethane-d4	13.0		"	13.3	97.7	77.3-121				
Surrogate: Toluene-d8	13.1		"	13.3	98.5	91.4-107				
Surrogate: 4-Bromofluorobenzene	13.5		"	13.3	102	85.3-109				

##### LCS Dup (8121109-BSD1)

Prepared & Analyzed: 12/11/08

Benzene	26.9	1.0	ug/l	33.3	80.8	70-114	2.26	8.14		
Toluene	27.8	1.0	"	33.3	83.5	72.7-116	2.18	7.88		
Surrogate: 1,2-Dichloroethane-d4	13.1		"	13.3	98.5	77.3-121				
Surrogate: Toluene-d8	13.3		"	13.3	100	91.4-107				
Surrogate: 4-Bromofluorobenzene	13.4		"	13.3	101	85.3-109				

##### Matrix Spike (8121109-MS1)

Source: R812059-01

Prepared & Analyzed: 12/11/08

Benzene	27.6	1.0	ug/l	33.3	ND	82.9	66.8-117			
Toluene	28.1	1.0	"	33.3	ND	84.4	71.5-117			
Surrogate: 1,2-Dichloroethane-d4	13.2		"	13.3		99.2	77.3-121			
Surrogate: Toluene-d8	13.2		"	13.3		99.2	91.4-107			
Surrogate: 4-Bromofluorobenzene	13.4		"	13.3		101	85.3-109			

Summit Scientific

The results in this report apply to the samples analyzed in accordance with the chain of custody document. This analytical report must be reproduced in its entirety.



LT Environmental, Inc.  
4600 West 60th Avenue  
Arvada CO, 80003

Project: MS - Eaton Cattle Co 1-18

Project Number: MS 0808  
Project Manager: Steve Compton

Reported:  
12/12/08 16:47

**Volatile Organic Compounds by EPA Method 8260B - Quality Control**  
**Summit Scientific**

Analyte	Reporting			Spike	Source		%REC		RPD	
	Result	Limit	Units	Level	Result	%REC	Limits	RPD	Limit	Notes

**Batch 8121109 - EPA 5030 Water MS**

Matrix Spike Dup (8121109-MSD1)		Source: R812059-01			Prepared & Analyzed: 12/11/08					
Benzene	27.2	1.0	ug/l	33.3	ND	81.7	66.8-117	1.46	17.8	
Toluene	28.2	1.0	"	33.3	ND	84.7	71.5-117	0.355	14.4	
Surrogate: 1,2-Dichloroethane-d4	12.9		"	13.3		97.0	77.3-121			
Surrogate: Toluene-d8	13.4		"	13.3		101	91.4-107			
Surrogate: 4-Bromofluorobenzene	14.1		"	13.3		106	85.3-109			

Summit Scientific

*The results in this report apply to the samples analyzed in accordance with the chain of custody document. This analytical report must be reproduced in its entirety.*



LT Environmental, Inc.  
4600 West 60th Avenue  
Arvada CO, 80003

Project: MS - Eaton Cattle Co 1-18

Project Number: MS 0808  
Project Manager: Steve Compton

**Reported:**  
12/12/08 16:47

### Notes and Definitions

DET Analyte DETECTED  
ND Analyte NOT DETECTED at or above the reporting limit  
NR Not Reported  
dry Sample results reported on a dry weight basis  
RPD Relative Percent Difference

