



Stantec

**Interim Reclamation and Remedial
Excavation Documentation Report
– Pit #111763**

API Number: 05-045-06107

**South Canyon Field
Garfield County, Colorado**

Submitted to:

Bob Hartman
Bureau of Land Management
2815 H Road
Grand Junction, CO 81506

Submitted by:

Stantec Consulting Corporation
2321 Club Meridian Dr., Suite E
Okemos, MI 48864

On Behalf of:

Jenee' Homer
Chevron Environmental Management
Company
1400 Smith St. Room 19001A
Houston, Texas 77002

December 15, 2008

Table of Contents

1.0 INTRODUCTION	1
2.0 PROJECT SCOPE.....	2
2.1 SCOPE CHANGES.....	2
3.0 FIELD IMPLEMENTATION.....	4
3.1 EXCAVATION EXTENTS.....	4
3.2 AMENDING OF EXCAVATED SOILS	4
3.3 SOIL SAMPLING RESULTS	5
4.0 LIMITATIONS AND CERTIFICATION	6

TABLES

Table 1	Confirmation Soil Sample Analytical Results – Pit #111763
---------	---

FIGURES

Figure 1	Site Location Map Facility ID #111763
Figure 2	Site Plan Facility ID #111763

APPENDICES

Appendix A	Seed Tags
Appendix B	Response to Comments Regarding Interim Reclamation and Remedial Excavation Work Plan
Appendix C	Regulatory Approval of Removal of Metals from Soil Analytical Suite
Appendix D	Analytical Laboratory Reports

1.0 Introduction

This report documents the interim reclamation and remedial excavation (IRRE) activities conducted at the disposal pit identified as State of Colorado Oil and Gas Conservation Commission (COGCC) Facility #111763 (Pit #111763). Pit #111763 was located at the well site of Federal 27-11 (Site) in Garfield County, Colorado (Figure 1). IRRE activities were proposed to the Bureau of Land Management (BLM) and the COGCC in the work plan entitled *Interim Reclamation and Remedial Excavation Work Plan; API Numbers: 05-045-06123, 05-045-06107, 05-045-06103, 05-045-06159, and 05-045-06164*, dated August 28, 2008 (Work Plan). The IRRE activities were conducted by Stantec Consulting Corporation (Stantec) on behalf of Chevron Environmental Management Company (CEMC). IRRE activities took place between September 15, 2008 and December 5, 2008.

Pertinent details used to identify the Site are summarized in the following table:

LEASE NAME	WELL NO.	API NO.	SURFACE LOCATION	OIL & GAS LESSOR	SURFACE OWNER/ MANAGEMENT AGENCY
FEDERAL	27-11	05-045-06107	SE/4SW/4 SEC 27, T7S-R104W	U.S.A. BLM C-17472	BUREAU OF LAND MANAGEMENT

The operator of the Site (Chevron Midcontinent LP) provided bonding for the IRRE activities conducted. Refer to BLM Bond # NM2881.

2.0 Project Scope

IRRE activities were conducted at Pit #111763 in accordance with objectives and procedures outlined in the Work Plan except as noted in Section 2.1. The Work Plan was based on guidelines provided in the BLM Gold Book (2007 version) and the COGCC series 1000 rules (January 2006 version). The project team selected the guidelines found in the COGCC series 900 rules (November 2006 version) as being suitable for this project.

IRRE activities consisted of the following basic steps:

1. Collected a background sample from the Site. Used background results and Allowable Concentrations in Table 910-1 of the series 900 rules to establish compliance values.
2. Collected delineation samples using an excavator. The samples were collected from two excavation floor locations and four excavation sidewall locations. Compared delineation results to compliance values to develop a remedial excavation plan.
3. Excavated and stockpiled soils in accordance with the remedial excavation plan.
4. Treated soils that were understood to exceed the compliance values on-site. Soils were treated by mixing in suitable amendments.
5. Sampled amended soils to ensure quality prior to beneficially re-using them as backfill.
6. Backfilled and compacted the excavation in 2-foot lifts to a depth of 3 feet below ground surface (bgs) with amended soils.
7. Backfilled top 3 feet of excavation with native clean soils.
8. Placed a 4-inch non-compacted layer of topsoil on the surface of the excavation to promote vegetation growth.
9. Seeded pit area with native seed blend and completed Site housekeeping. Copies of the seed tags are provided in Appendix A.

While the Work Plan guided most IRRE activities at the pit, several noteworthy changes were made to the final scope. These changes are outlined in Section 2.1.

2.1 SCOPE CHANGES

Several changes to the approved Work Plan were made during project implementation as appropriate:

1. In response to BLM comments on the Work Plan, Stantec provided a response to comments letter dated September 19, 2008. The letter served as clarification to details provided in the Work Plan. Appendix B provides a copy of the letter.

Interim Reclamation and Remedial Excavation Documentation Report – Pit #111763

2. 46 feet of a 2-inch steel blow down line running from the gas well to the pit was encountered and removed entirely instead of being abandoned in-place.
3. Metals were removed from the soil analytical suite on October 24, 2008 after initial sampling results obtained from the laboratory indicated that metals concentrations were not a remedial driver based on the series 900 rules. The COGCC and BLM were petitioned to allow this deviation from the Work Plan. Appendix C provides documentation of these communications. Select samples collected prior to October 24 had metals analyses held while total petroleum hydrocarbon (TPH), pH, sodium adsorption ratio (SAR), and conductivity analyses were performed to avoid conducting unnecessary analyses. Once the approval to eliminate the metals analyses was received, no further analyses were conducted on these samples.

3.0 Field Implementation

Section 3 documents the excavation extents of Pit #111763, excavated soil management procedures, and soil sampling results.

3.1 EXCAVATION EXTENTS

Pit #111763 had nominal dimensions of 15 feet wide by 15 feet long by 4 feet deep prior to remedial excavation. Results of the delineation sampling effort were used to design an excavation plan to remove soils above the compliance values. The excavation plan consisted of the following:

- Excavated 5 feet to the north of the original pit footprint;
- Excavated 5 feet to the east of the original pit footprint;
- Excavated 1 foot to the south of the original pit footprint;
- Excavated 3 feet to the west of the original pit footprint; and
- Excavated the floor of the pit to 15 feet bgs.

After executing the excavation plan, the nominal dimensions¹ of the excavation were 23 feet wide by 21 feet long by 15 feet deep.

Figure 2 indicates the original pit perimeter, the nominal excavation perimeter, soil delineation sampling locations, and other surface features of the Site.

3.2 AMENDING OF EXCAVATED SOILS

Approximately 150 cubic yards (cy) of soils with concentrations above compliance values were generated during execution of the excavation plan. Pit #111763 contained no fluids and no product was found during excavation activities. Excavated soils were held in bermed stockpiles that were lined with plastic sheeting prior to treatment.

Treatment consisted of mixing in amendment materials at specific ratios as follows:

- Approximately 150 cy of clean fill. Mixing in the clean fill helped homogenize the excavated soil and provided an initial drop in concentration that made the hydrocarbons more biologically available for remediation.
- 500 pounds of 35-5-7 fertilizer. The fertilizer will provide nutrients required during the biological degradation of the hydrocarbons in-situ.

¹ Dimensions do not include the areas required for benching or heavy equipment access required for construction.

Interim Reclamation and Remedial Excavation Documentation Report – Pit #111763

- Approximately 9 tons of bulk gypsum. Gypsum was added to provide an electron acceptor required during the biological degradation of the hydrocarbons in-situ.

Following treatment, three confirmation samples were collected from the amended soils. All were below the specified compliance values.

3.3 SOIL SAMPLING RESULTS

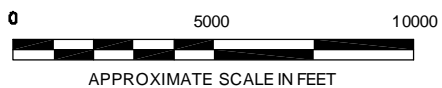
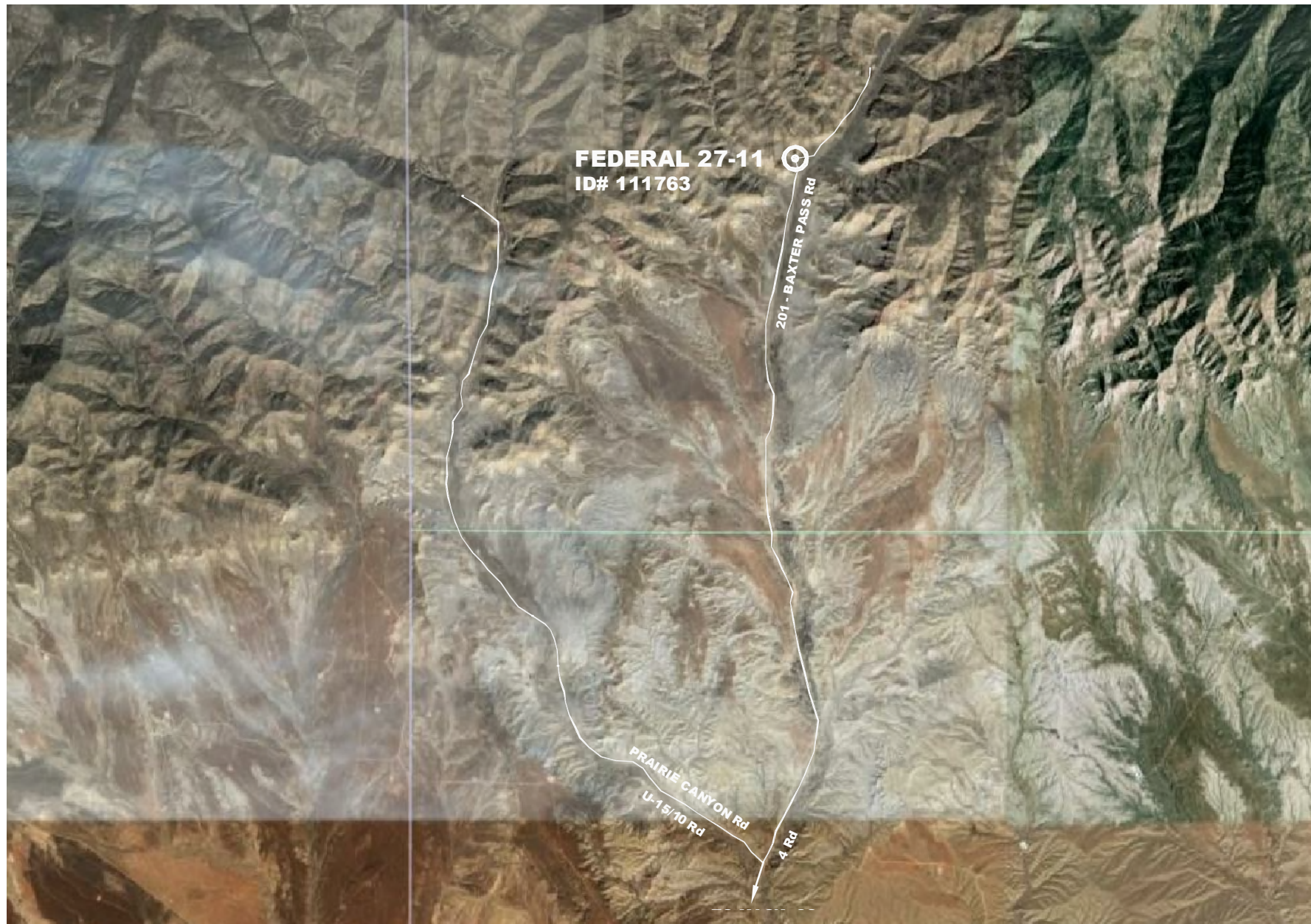
Table 1 provides compliance values and summarizes background sample analytical results, excavation confirmation sample analytical results, and amended soil sample analytical results. It should be noted that only confirmation, and not all delineation samples, are shown in Table 1. Complete analytical laboratory reports for all samples are included in Appendix D.

4.0 Limitations and Certification

This documentation report was prepared in accordance with the scope of work outlined in Stantec's contract and with generally accepted professional engineering and environmental consulting practices existing at the time this documentation report was prepared and applicable to the location of the site. It was prepared for the exclusive use of CEMC for the express purpose stated above. Any re-use of this report for a different purpose or by others not identified above shall be at the user's sole risk without liability to Stantec. To the extent that this documentation report is based on information provided to Stantec by third parties, Stantec may have made efforts to verify this third party information, but Stantec cannot guarantee the completeness or accuracy of this information. The opinions expressed and data collected are based on the conditions of the site existing at the time of the field investigation. No other warranties, expressed or implied are made by Stantec.

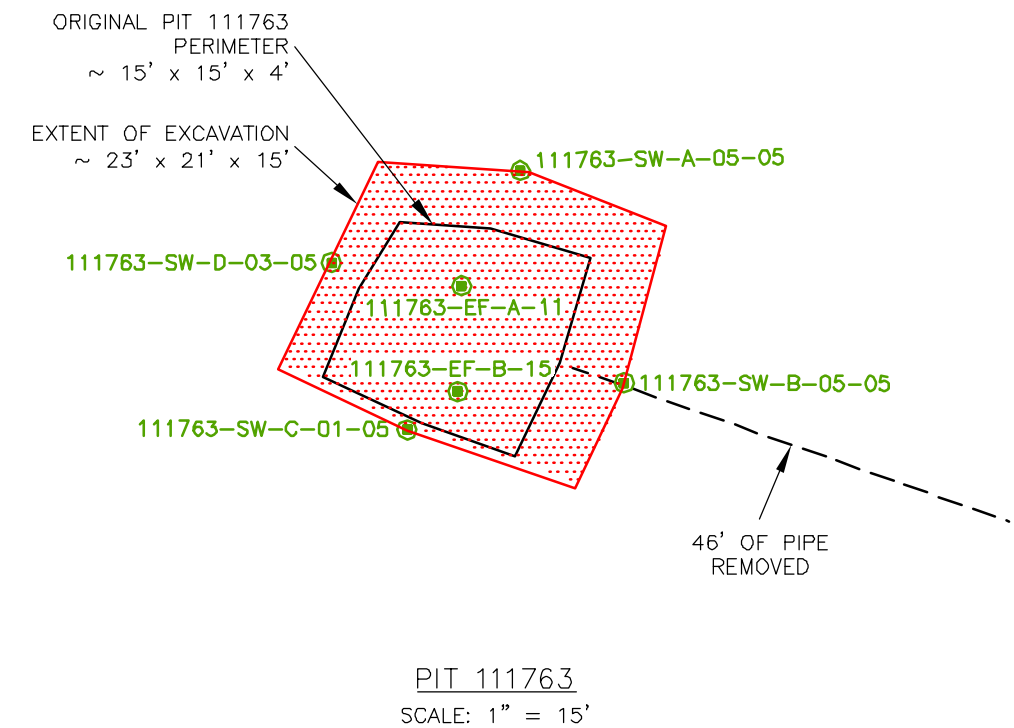
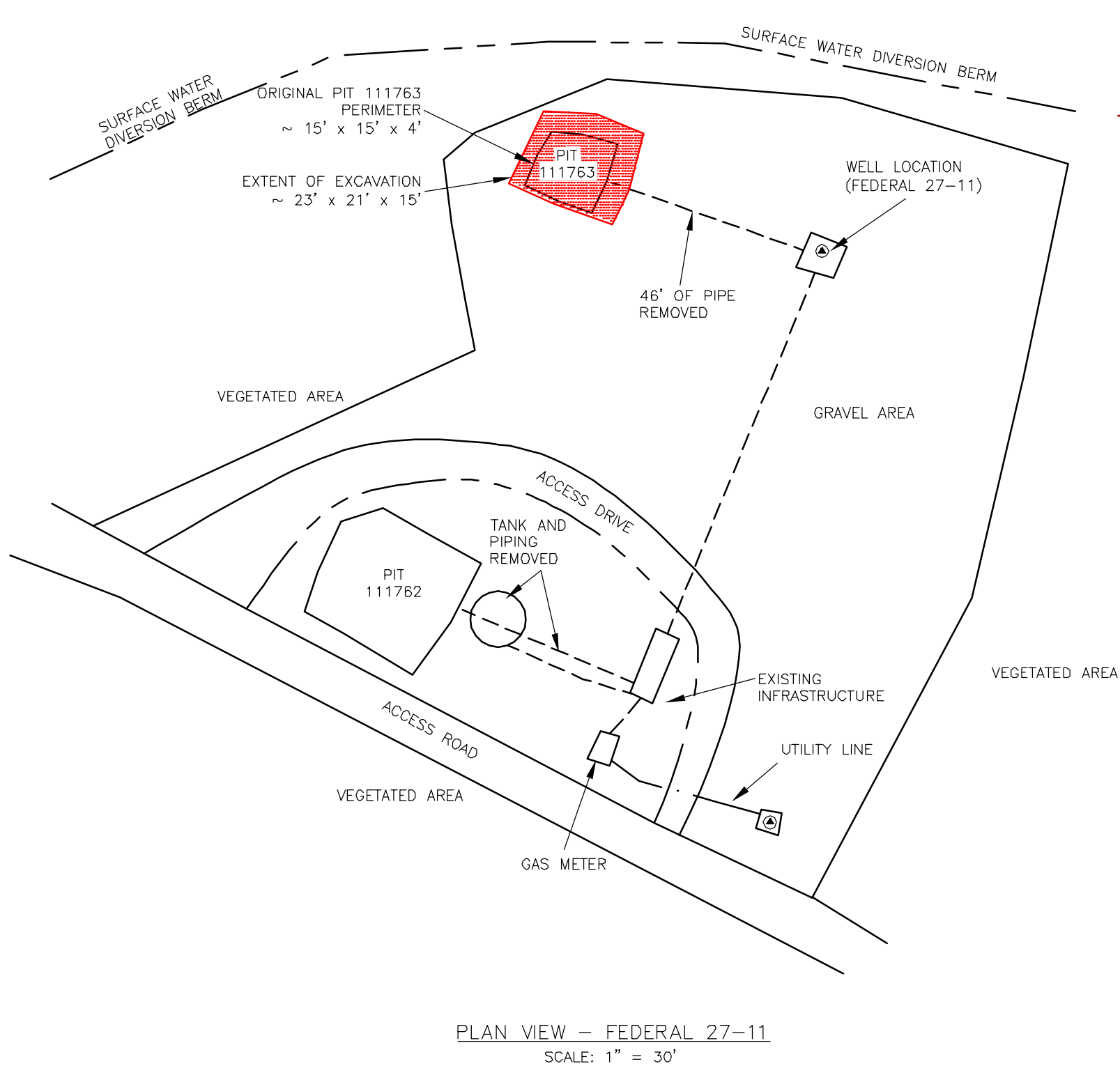
Tables

Figures



2321 Oub Meriden Drive, Suite E
Okemos, Michigan
PHONE: (517) 349-9499 FAX: (517) 349-6863


FOR: SOUTH CANYON GAS FIELD GARFIELD COUNTY, CO		SITE LOCATION MAP FACILITY ID #111763		FIGURE: 1
JOB NUMBER: 89CH.49623.08	DRAWN BY: DRM	CHECKED BY: SAM	APPROVED BY: SJ	DATE: 12/4/2008



- LEGEND:**
- WELL LOCATION
 - PIPING (UNDERGROUND)
 - UTILITY LINE
 - PIT SAMPLE LOCATION
 - AREA EXCAVATED

NOTE:

PIPING (UNDERGROUND) SHOWN IN APPROXIMATE LOCATIONS.
NOT ALL PIPING SHOWN.

 <div>2321 Club Meridian Drive, Suite E Okemos, Michigan PHONE: (517) 349-9499 FAX: (517) 349-6863</div>	FOR: SOUTH CANYON GAS FIELD GARFIELD COUNTY, CO		SITE PLAN FACILITY ID #111763		FIGURE: 2
	JOB NUMBER: 89CH.49623.08	DRAWN BY: DRM	CHECKED BY: SAM	APPROVED BY: SJ	DATE: 12/4/2008

Appendix A

Seed Tags

SOUTH CANYON 1 ACRE MIX
LOT # : G-81279

Mixture/Variety:	Purity %	Germ%	Origin:
4-WING SALT BUSH	24.65	42	CO
PUBESCENT WHEATGRASS, LUNA	19.74	96	SD
WESTERN WHEATGRASS, ARriba	17.37	97	WY
STREAMBANK WHEATGRASS, SODAR	17.22	67	WY
INDIAN RICEGRASS, PALOMA	12.81	97	WY
SCARLET GLOBEMALLOW	4.55	89	UT

Crop: 0.07% Inert: 3.47% Weeds: 0.13% Net Wt. 19.5#

Noxious Weeds: NONE FOUND

Tested: JUNE 2008

CUSTOM MIX FOR STANTEC

Sharp Bros. Seed Co.

Greeley, CO 80631

(970) 356-4710

SOUTH CANYON 2 ACRE MIX
LOT # : G-81383

Mixture/Variety:	Purity %	Germ%	Origin:
4-WING SALT BUSH	24.96	42	CO
PUBESCENT WHEATGRASS, LUNA	20.00	96	SD
WESTERN WHEATGRASS, ARriba	17.60	97	WY
STREAMBANK WHEATGRASS, SODAR	17.44	67	WY
INDIAN RICEGRASS, PALOMA	13.63	97	WY
SCARLET GLOBEMALLOW	03.23	94	UT

Crop: 0.00% Inert: 3.03% Weeds: 0.11% Net Wt. 38.5#

Noxious Weeds: NONE FOUND

Tested: AUGUST 2008

CUSTOM MIX FOR STANTEC

Sharp Bros. Seed Co.

Greeley, CO 80631

(970) 356-4710

Appendix B

Response to Comments Regarding Interim Reclamation and Remedial Excavation Work Plan



Stantec Consulting Corporation
2321 Club Meridian Drive, Suite E
Okemos MI 48864
Tel: (517) 349-9499
Fax: (517) 349-6863

Stantec

September 19, 2008

Julia Christiansen
Natural Resource Specialist
Bureau of Land Management
2815 H Road
Grand Junction, CO 81506

Reference: Response to Comments regarding the Interim Reclamation and Remedial Excavation Work Plan; API Numbers: 05-045-06123, 05-045-06107, 05-045-06103, 05-045-06159, and 05-045-06164, dated 08/28/08.

Dear Ms Christiansen,

Stantec Consulting Corporation (Stantec) on behalf of Chevron Environmental Management Company (CEMC) is submitting this letter as a response to the comments provided by the Bureau of Land Management (BLM) email regarding recommendations to the interim reclamation activities outlined in the above referenced plan. Each BLM comment is summarized below followed by Stantec's response in *italics*.

BLM Comment

1. Add language in section 2.4.1 (Grading) for compaction of pit subsoil before topsoil.

Stantec Response

Soil will be placed back into the excavation in 2-foot lifts and compacted to minimize subsidence. Backfill will be placed with the excavator and compacted with the excavator bucket until the fill reaches within two feet of the ground surface. The last two feet will be compacted using the tracks of the excavator or loader until no ground pumping is observed.

BLM Comment

2. In Section 2.4.2 (Revegetation) do not dozer track for seed bed prep (too much compaction), but pock/pit -please review the language in the reclamation stipulations attached.

Stantec Response

Final grading will be conducted using a 4-inch thick layer of soil comparable to the native topsoil in the area. Grading will be such as to blend with the natural contours and minimize ponding. Top soil that is placed as part of the interim reclamation activities will not be compacted in place to allow for seedbed preparation. In addition the area to be seeded will be scarified (ripped) immediately prior to seeding. Ripping will occur in two passes in perpendicular directions. The seed mixture used will be as follows:

<i>Species</i>	<i>Application Rate PLS – Pounds per Acre</i>
<i>Arriba Western wheatgrass</i>	<i>3.2</i>
<i>Sodar Streambank wheatgrass</i>	<i>2.2</i>
<i>Luna Pubescent wheatgrass</i>	<i>3.6</i>
<i>Paloma Indian ricegrass</i>	<i>2.4</i>
<i>Rincon or Native Four-wing saltbush</i>	<i>2.0</i>
<i>Scarlet Globemallow</i>	<i>0.5</i>
	<i>13.9lbs. PLS/acre Total</i>

BLM Comment

3. Note in Section 2.5 (Pit Associated Reclamation Tasks) that, if needed, pipelines will be purged before plugging.

Stantec Response

Pipelines associated with the interim reclamation activities that are selected for in-place abandonment will be purged prior to being plugged.

BLM Comment

4. Submit a Sundry detailing the work that was conducted (including seed tags) at the completion of the project.

Stantec Response

Per the specifications for reclamation activities, the following will be completed;

The Grand Junction Field Office shall be notified at least 48 hours prior to commencing any reclamation work and within 48 hours of completion of reclamation work.

Within 30 days of seeding, a Sundry Notice of Subsequent Report describing the work completed will be submitted to BLM, including the weed free certification and seed tags.

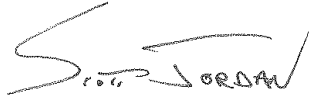
September 19, 2008

Page 3 of 3

Please let me know if you have any questions or if additional clarification is needed.

Sincerely,

Stantec Consulting Corporation

A handwritten signature in black ink, appearing to read "Scott Jordan". The signature is stylized with a large, sweeping "S" and a distinct "J".

Scott Jordan
Project Manager
Tel: (517) 349-9499 ext 236
Fax: (517) 349-6863
scott.jordan@stantec.com

Attachments:

cc:

Jenee' Homer Chevron Environmental Management Company
1400 Smith St. Room 19001A; Houston, Texas 77002

COGCC

1120 Lincoln Street, Suite 801, Denver, Colorado 80203

Appendix C

Regulatory Approval of Removal of Metals from Soil Analytical Suite

BLM Approval for Metals South Canyon Pit Reclamation.txt
From: Julia_Christiansen@blm.gov
Sent: Friday, October 24, 2008 12:58 PM
To: Jordan, Scott
Subject: Fw: Chevron South Canyon Pit Reclamation

Scott, sorry you had to wait so long for this.

Julia Christiansen | Natural Resource Specialist BLM, Grand Junction Field Office
2815 H Road, Grand Junction, CO 81506
Desk: 970-244-3093 Fax: 970-244-3083
julia_christiansen@blm.gov

"May your trails be crooked, winding, lonesome, dangerous... leading to the most amazing views."

----- Forwarded by Julia Christiansen/GJFO/CO/BLM/DOI on 10/24/2008 10:57 AM -----

Alan
Kraus/GJFO/CO/BLM
/DOI

10/24/2008 10:27
AM

To
Julia
Christiansen/GJFO/CO/BLM/DOI@BLM
CC
Subject
Re: Fw: Chevron South Canyon Pit
Reclamation(Document link: Julia
Christiansen)

Julia

I looked at their results and the COGCC table for allowable metals in the 900 series regulations and would agree with COGCC's call that further metals analysis is not warranted.

Alan Kraus
Hazardous Materials Specialist
Grand Junction Field Office
970-244-3078 (office)
970-640-3943 (cell)

From: Jordan, Scott
Sent: Friday, October 17, 2008 10:38 AM
To: 'Julia_Christiansen@blm.gov'
Cc: Maher, Seth
Subject: Chevron South Canyon Pit Reclamation

Attachments: South Canyon Metals Results.pdf
 Julia,

Below are a couple of emails outlining a request to COGCC and subsequently their approval, to eliminate additional metals analysis on our South Canyon project based on the data we have collected and received to date.

To summarize, we have collected more than 100 soil samples as part of our excavation delineation and background sampling and analyzed each sample for the full soil analytical suite outlined in Table 910-1 of the series 900 rules. As stated below; *"A review of the compiled data shows that metals are not a remedial driver for this project as concentrations of metals are relatively low, and are either below the Allowable Concentrations designated in Table 910-1 or no Allowable Concentrations are specified."* Attached is a table that summarizes the maximum and minimum concentrations we have so far.

Having received COGCC's initial approval to eliminate additional metals analysis on this project, Stantec would like to gain BLM's concurrence on this approach.

Please let myself or Seth know if you have additional questions or comments.

We look forward to your response,

Thanks Julia,

Scott Jordan
 Chevron National OE Coordinator
 Stantec
 2321 Club Meridian Drive Suite E
 Okemos MI 48864
 Ph: (517) 349-9499 Ext. 236
 Fx: (517) 349-6863
 Cell: (517) 202-5617
 scott.jordan@stantec.com
stantec.com

The content of this email is the confidential property of Stantec and should not be copied, modified, retransmitted, or used for any purpose except with Stantec's written authorization. If you are not the intended recipient, please delete all copies and notify us immediately.



Please consider the environment before printing this email.

From: Canfield, Chris [mailto:Chris.Canfield@state.co.us]
Sent: Wednesday, October 15, 2008 1:21 PM
To: Maher, Seth
Cc: Jordan, Scott; Patterson, Marisa
Subject: RE: Chevron South Canyon Pit reclamation project update

Hi Seth,

I agree with your conclusion and recommendation. Regarding a conference call, my next two or three days are pretty well packed, but Tuesday October 21 is wide open if that day works for you.

Chris

Chris Canfield, P.G.
 Environmental Protection Specialist, Northwest Region
Colorado Oil & Gas Conservation Commission
 707 Wapiti Court
 Suite 204
 Rifle, CO 81650

(970) 625-2497 Office
 (970) 625-5682 Fax
 (970) 216-6832 Cellular
chris.canfield@state.co.us

From: Maher, Seth [mailto:Seth.Maher@stantec.com]
Sent: Wednesday, October 15, 2008 9:29 AM
To: Canfield, Chris
Cc: Jordan, Scott; Patterson, Marisa
Subject: Chevron South Canyon Pit reclamation project update
Importance: High

Chris-

The interim pit reclamation activities being conducted on behalf of Chevron at Federal 6-13, Lewis USA 36-1, Federal 23-12, and Federal 27-11 are on-going, and excavation extents are currently approximately 70-80% delineated. We anticipate finishing the fieldwork in mid-November, which is a little bit beyond our initial estimate.

Attached is a table summarizing the maximum and minimum concentrations of the metals data we have thus far. To date we have analyzed over 100 soil samples for the full soil analytical suite outlined in Table 910-1 of the series 900 rules. These samples are from background and pit excavation delineation sampling (and are representative of the six pits found at the four well sites referenced above). A review of the compiled data shows that metals are not a remedial driver for this project as concentrations of metals are relatively low, and are either below the Allowable Concentrations designated in Table 910-1 or no Allowable Concentrations are specified.

Based on this conclusion, the project team would like to eliminate the metals analysis specified in the originally submitted work plan from the remainder of the project sampling in the interest of stewarding costs and expediting the field work. Stantec would like the opportunity to discuss this matter with you at your earliest convenience. Providing an agreement can be reached on this issue, the project team would then contact the BLM with the proposed sampling strategy.

Please comment on your availability so we can schedule a conference call to discuss, and let me know if you have any initial questions or comments.

Thank you.

Seth M

<<South Canyon Metals Results.pdf>>

Seth Maher, PE
Associate Engineer
Stantec
2321 Club Meridian Drive Suite E
Okemos MI 48864
Ph: (517) 349-9499
Fx: (517) 349-6863
Cell: (517) 490-7967
seth.maher@stantec.com
stantec.com

The content of this email is the confidential property of Stantec and should not be copied, modified, retransmitted, or used for any purpose except with Stantec's written authorization. If you are not the intended recipient, please delete all copies and notify us immediately.



Please consider the environment before printing this email.

Scott Jordan
Chevron National OE Coordinator
Stantec
2321 Club Meridian Drive Suite E

Okemos MI 48864
Ph: (517) 349-9499 Ext. 236
Fx: (517) 349-6863
Cell: (517) 202-5617
scott.jordan@stantec.com

stantec.com

The content of this email is the confidential property of Stantec and should not be copied, modified, retransmitted, or used for any purpose except with Stantec's written authorization. If you are not the intended recipient, please delete all copies and notify us immediately.



Please consider the environment before printing this email.

Appendix D

Analytical Laboratory Reports



Analytical Laboratory Report

Supplemental Report

Report ID: S38406.01(03)
Generated on 10/13/2008
Replaces report S38406.01(02) generated on 10/07/2008

Report to

Attention: Marisa Patterson
Stantec
2321 Club Meridian Dr. #E
Okemos, MI 48864-4505
MSA# 94023

Phone: 517-349-9499 FAX: 517-349-6863
Email: marisa.patterson@stantec.com

Report produced by

Merit Laboratories
2680 East Lansing Drive
East Lansing, MI 48823

Phone: (517) 332-0167 FAX: (517) 332-6333

Report Summary

Lab Sample ID(s): S38406.01-S38406.24
Project: South Canyon
Collected Date: 09/30/2008
Submitted Date/Time: 10/01/2008 10:20
Sampled by: Lew Boone
P.O. #:

Report Notes

Results relate only to items tested as received by the laboratory.
Methods may be modified for improved performance.
Results reported on a dry weight basis where applicable.
"Not detected" indicates that parameter was not found at a level equal to or greater than the RL.
Report shall not be reproduced except in full, without the written approval of Merit Laboratories.

Violetta F. Murshak
Laboratory Director



Analytical Laboratory Report

Supplemental Report

Sample Summary (24 samples)

Sample ID	Sample Tag	Matrix	Collected Date/Time
S38406.01	111763-EF-A-05	Soil	09/30/2008 12:18
S38406.02	111763-EF-B-05	Soil	09/30/2008 12:23
S38406.03	111763-EF-A-07	Soil	09/30/2008 12:28
S38406.04	111763-EF-B-07	Soil	09/30/2008 12:30
S38406.05	111763-EF-A-09	Soil	09/30/2008 12:35
S38406.06	111763-EF-B-09	Soil	09/30/2008 12:38
S38406.07	111763-EF-A-11	Soil	09/30/2008 12:42
S38406.08	111763-EF-B-11	Soil	09/30/2008 12:45
S38406.09	111763-SW-C-01-05	Soil	09/30/2008 12:57
S38406.10	111763-SW-C-03-05	Soil	09/30/2008 12:59
S38406.11	111763-SW-C-05-05	Soil	09/30/2008 13:02
S38406.12	111763-SW-C-07-05	Soil	09/30/2008 13:07
S38406.13	111763-SW-B-01-05	Soil	09/30/2008 13:17
S38406.14	111763-SW-B-03-05	Soil	09/30/2008 13:20
S38406.15	111763-SW-B-05-05	Soil	09/30/2008 13:25
S38406.16	111763-SW-B-07-05	Soil	09/30/2008 13:27
S38406.17	111763-SW-D-01-05	Soil	09/30/2008 13:49
S38406.18	111763-SW-D-03-05	Soil	09/30/2008 13:53
S38406.19	111763-SW-D-05-05	Soil	09/30/2008 13:57
S38406.20	111763-SW-D-07-05	Soil	09/30/2008 14:00
S38406.21	111763-SW-A-01-05	Soil	09/30/2008 14:14
S38406.22	111763-SW-A-03-05	Soil	09/30/2008 14:17
S38406.23	111763-SW-A-05-05	Soil	09/30/2008 14:20
S38406.24	111763-SW-A-07-05	Soil	09/30/2008 14:23



Analytical Laboratory Report

Supplemental Report

Lab Sample ID: S38406.01
Sample Tag: 111763-EF-A-05
Collected Date/Time: 09/30/2008 12:18
Matrix: Soil
COC Reference: 51094

Sample Containers

#	Type	Preservative(s)	Refrigerated?	Arrival Temp. (C)	Thermometer #
2	8oz. Glass	None	Yes	3.9	IR

Analysis	Results	Units	RL	Method	Run Date/Time	Analyst	CAS #	Flags
----------	---------	-------	----	--------	---------------	---------	-------	-------

Extraction / Prep.

DRO Extraction	Completed			3510C	10/01/08 14:20	PL		
Mercury Digestion	Completed			7471A	10/02/08 10:30	JRT		
Metal Digestion	Completed			3050B	10/02/08 12:00	SLS		
Metal Digestion	Completed			3015A	10/02/08 10:00	PER		
Sodium Adsorption Ratio Prep.	Completed			20B	10/01/08 14:16	DJS		

Inorganics

Conductivity	457	umhos/cm		120.1	10/02/08 12:50	JKB		
pH	8.09	STD Units	0.1	9045D	10/02/08 15:26	WAR		
Total Solids	99	%	1	Std M 2540 B	10/01/08 13:25	WAR		

Metals

Sodium Adsorption Ratio	0.25			20B	10/02/08 15:35	BJR		
Arsenic	1.49	mg/kg	0.10	6020	10/02/08 13:40	SLS	7440-38-2	
Barium	129	mg/kg	1.0	6020	10/02/08 13:40	SLS	7440-39-3	
Boron	2.71	mg/kg	2.0	6020	10/02/08 13:40	SLS	7440-42-8	
Cadmium	0.31	mg/kg	0.20	6020	10/02/08 13:40	SLS	7440-43-9	
Chromium	1.7	mg/kg	1.0	6020	10/02/08 13:40	SLS	7440-47-3	
Copper	11.5	mg/kg	1.0	6020	10/02/08 13:40	SLS	7440-50-8	
Lead	13.8	mg/kg	0.50	6020	10/02/08 13:40	SLS	7439-92-1	
Mercury	0.803	mg/kg	0.050	7471A	10/02/08 14:16	JRT	7439-97-6	
Molybdenum	Not detected	mg/kg	0.50	6020	10/02/08 13:40	SLS	7439-98-7	
Nickel	9.0	mg/kg	1.0	6020	10/02/08 13:40	SLS	7440-02-0	
Selenium	Not detected	mg/kg	0.20	6020	10/02/08 13:40	SLS	7782-49-2	
Silver	Not detected	mg/kg	0.10	6020	10/02/08 13:40	SLS	7440-22-4	
Zinc	41.6	mg/kg	1.0	6020	10/02/08 13:40	SLS	7440-66-6	
Calcium	55.7	mg/L	1.0	200.8	10/02/08 12:12	PER	7440-70-2	
Magnesium	14.6	mg/L	0.20	200.8	10/02/08 12:12	PER	7439-95-4	
Sodium	8.00	mg/L	0.20	200.8	10/02/08 12:12	PER	7440-23-5	

Organics - Semi-Volatiles

TPH DRO (C10-C28)	10,500,000	ug/kg	700,000	8015B	10/02/08 15:23	ARH		XY
TPH ORO (C28-C36)	Not detected	ug/kg	700,000	8015M	10/02/08 15:23	ARH		XY

Organics - Volatiles

TPH GRO (C6-C10)	21,000,000	ug/kg	1,000,000	8015M	10/02/08 02:42	JGH		Y
------------------	------------	-------	-----------	-------	----------------	-----	--	---

X-Elevated reporting limit due to matrix interference Y-Elevated reporting limit due to high target concentration



Analytical Laboratory Report

Supplemental Report

Lab Sample ID: S38406.02
Sample Tag: 111763-EF-B-05
Collected Date/Time: 09/30/2008 12:23
Matrix: Soil
COC Reference: 51094

Sample Containers

#	Type	Preservative(s)	Refrigerated?	Arrival Temp. (C)	Thermometer #
2	8oz. Glass	None	Yes	3.9	IR

Analysis	Results	Units	RL	Method	Run Date/Time	Analyst	CAS #	Flags
----------	---------	-------	----	--------	---------------	---------	-------	-------

Extraction / Prep.

DRO Extraction	Completed			3510C	10/01/08 14:20	PL		
Mercury Digestion	Completed			7471A	10/02/08 10:30	JRT		
Metal Digestion	Completed			3050B	10/02/08 12:00	SLS		
Metal Digestion	Completed			3015A	10/02/08 10:00	PER		
Metal Digestion (Replicate 01)	Completed			3015A	10/10/08 12:00	SLS		
Sodium Adsorption Ratio Prep.	Completed			20B	10/01/08 14:16	DJS		

Inorganics

Conductivity	429	umhos/cm		120.1	10/02/08 12:55	JKB		
pH	8.48	STD Units	0.1	9045D	10/02/08 15:26	WAR		
Total Solids	89	%	1	Std M 2540 B	10/01/08 13:25	WAR		

Metals

Hot Water Extraction	Completed				10/09/08 18:10	TAS		
Sodium Adsorption Ratio	0.10			20B	10/02/08 15:35	BJR		
Arsenic	2.61	mg/kg	0.10	6020	10/02/08 13:43	SLS	7440-38-2	
Barium	239	mg/kg	1.0	6020	10/02/08 13:43	SLS	7440-39-3	
Boron	3.93	mg/kg	2.0	6020	10/02/08 13:43	SLS	7440-42-8	
Cadmium	0.33	mg/kg	0.20	6020	10/02/08 13:43	SLS	7440-43-9	
Chromium	2.5	mg/kg	1.0	6020	10/02/08 13:43	SLS	7440-47-3	
Copper	10.3	mg/kg	1.0	6020	10/02/08 13:43	SLS	7440-50-8	
Lead	11.9	mg/kg	0.50	6020	10/02/08 13:43	SLS	7439-92-1	
Mercury	0.263	mg/kg	0.050	7471A	10/02/08 14:20	JRT	7439-97-6	
Molybdenum	Not detected	mg/kg	0.50	6020	10/02/08 13:43	SLS	7439-98-7	
Nickel	10.5	mg/kg	1.0	6020	10/02/08 13:43	SLS	7440-02-0	
Selenium	0.78	mg/kg	0.20	6020	10/02/08 13:43	SLS	7782-49-2	
Silver	Not detected	mg/kg	0.10	6020	10/02/08 13:43	SLS	7440-22-4	
Zinc	45.5	mg/kg	1.0	6020	10/02/08 13:43	SLS	7440-66-6	
Boron	1.00	mg/L	0.02	200.8	10/10/08 16:14	SLS	7440-42-8	
Calcium	54.6	mg/L	1.0	200.8	10/02/08 12:14	PER	7440-70-2	
Magnesium	12.3	mg/L	0.20	200.8	10/02/08 12:14	PER	7439-95-4	
Sodium	3.02	mg/L	0.20	200.8	10/02/08 12:14	PER	7440-23-5	

Organics - Semi-Volatiles

TPH DRO (C10-C28)	10,900,000	ug/kg	400,000	8015B	10/02/08 11:21	ARH		XY
TPH ORO (C28-C36)	Not detected	ug/kg	400,000	8015M	10/02/08 11:21	ARH		XY

Organics - Volatiles

TPH GRO (C6-C10)	22,000,000	ug/kg	1,000,000	8015M	10/02/08 03:01	JGH		Y
------------------	------------	-------	-----------	-------	----------------	-----	--	---

X-Elevated reporting limit due to matrix interference Y-Elevated reporting limit due to high target concentration



Analytical Laboratory Report

Supplemental Report

Lab Sample ID: S38406.03
Sample Tag: 111763-EF-A-07
Collected Date/Time: 09/30/2008 12:28
Matrix: Soil
COC Reference: 51094

Sample Containers

#	Type	Preservative(s)	Refrigerated?	Arrival Temp. (C)	Thermometer #
2	8oz. Glass	None	Yes	3.9	IR

Analysis	Results	Units	RL	Method	Run Date/Time	Analyst	CAS #	Flags
----------	---------	-------	----	--------	---------------	---------	-------	-------

Extraction / Prep.

DRO Extraction	Completed			3510C	10/01/08 14:20	PL		
Mercury Digestion	Completed			7471A	10/02/08 10:30	JRT		
Metal Digestion	Completed			3050B	10/02/08 12:00	SLS		
Metal Digestion	Completed			3015A	10/02/08 10:00	PER		
Sodium Adsorption Ratio Prep.	Completed			20B	10/01/08 14:16	DJS		

Inorganics

Conductivity	449	umhos/cm		120.1	10/02/08 13:00	JKB		
pH	8.35	STD Units	0.1	9045D	10/02/08 15:26	WAR		
Total Solids	88	%	1	Std M 2540 B	10/01/08 13:25	WAR		

Metals

Sodium Adsorption Ratio	0.17			20B	10/02/08 15:35	BJR		
Arsenic	2.14	mg/kg	0.10	6020	10/02/08 13:47	SLS	7440-38-2	
Barium	111	mg/kg	1.0	6020	10/02/08 13:47	SLS	7440-39-3	
Boron	2.40	mg/kg	2.0	6020	10/02/08 13:47	SLS	7440-42-8	
Cadmium	Not detected	mg/kg	0.20	6020	10/02/08 13:47	SLS	7440-43-9	
Chromium	1.2	mg/kg	1.0	6020	10/02/08 13:47	SLS	7440-47-3	
Copper	8.9	mg/kg	1.0	6020	10/02/08 13:47	SLS	7440-50-8	
Lead	10.1	mg/kg	0.50	6020	10/02/08 13:47	SLS	7439-92-1	
Mercury	Not detected	mg/kg	0.050	7471A	10/02/08 14:21	JRT	7439-97-6	
Molybdenum	Not detected	mg/kg	0.50	6020	10/02/08 13:47	SLS	7439-98-7	
Nickel	9.5	mg/kg	1.0	6020	10/02/08 13:47	SLS	7440-02-0	
Selenium	0.23	mg/kg	0.20	6020	10/02/08 13:47	SLS	7782-49-2	
Silver	Not detected	mg/kg	0.10	6020	10/02/08 13:47	SLS	7440-22-4	
Zinc	34.0	mg/kg	1.0	6020	10/02/08 13:47	SLS	7440-66-6	
Calcium	41.9	mg/L	1.0	200.8	10/02/08 12:15	PER	7440-70-2	
Magnesium	18.9	mg/L	0.20	200.8	10/02/08 12:15	PER	7439-95-4	
Sodium	5.20	mg/L	0.20	200.8	10/02/08 12:15	PER	7440-23-5	

Organics - Semi-Volatiles

TPH DRO (C10-C28)	3,600,000	ug/kg	200,000	8015B	10/02/08 11:43	ARH		XY
TPH ORO (C28-C36)	Not detected	ug/kg	200,000	8015M	10/02/08 11:43	ARH		XY

Organics - Volatiles

TPH GRO (C6-C10)	17,000,000	ug/kg	1,000,000	8015M	10/02/08 03:19	JGH		Y
------------------	------------	-------	-----------	-------	----------------	-----	--	---

X-Elevated reporting limit due to matrix interference Y-Elevated reporting limit due to high target concentration



Analytical Laboratory Report

Supplemental Report

Lab Sample ID: S38406.04
Sample Tag: 111763-EF-B-07
Collected Date/Time: 09/30/2008 12:30
Matrix: Soil
COC Reference: 51094

Sample Containers

#	Type	Preservative(s)	Refrigerated?	Arrival Temp. (C)	Thermometer #
2	8oz. Glass	None	Yes	3.9	IR

Analysis	Results	Units	RL	Method	Run Date/Time	Analyst	CAS #	Flags
----------	---------	-------	----	--------	---------------	---------	-------	-------

Extraction / Prep.

DRO Extraction	Completed			3510C	10/01/08 14:20	PL		
Mercury Digestion	Completed			7471A	10/02/08 10:30	JRT		
Metal Digestion	Completed			3050B	10/02/08 12:00	SLS		
Metal Digestion	Completed			3015A	10/02/08 10:00	PER		
Sodium Adsorption Ratio Prep.	Completed			20B	10/01/08 14:16	DJS		

Inorganics

Conductivity	414	umhos/cm		120.1	10/02/08 13:05	JKB		
pH	8.35	STD Units	0.1	9045D	10/02/08 15:26	WAR		
Total Solids	91	%	1	Std M 2540 B	10/01/08 13:25	WAR		

Metals

Sodium Adsorption Ratio	0.11			20B	10/02/08 15:35	BJR		
Arsenic	1.93	mg/kg	0.10	6020	10/02/08 13:51	SLS	7440-38-2	
Barium	104	mg/kg	1.0	6020	10/02/08 13:51	SLS	7440-39-3	
Boron	2.35	mg/kg	2.0	6020	10/02/08 13:51	SLS	7440-42-8	
Cadmium	0.21	mg/kg	0.20	6020	10/02/08 13:51	SLS	7440-43-9	
Chromium	1.4	mg/kg	1.0	6020	10/02/08 13:51	SLS	7440-47-3	
Copper	10.2	mg/kg	1.0	6020	10/02/08 13:51	SLS	7440-50-8	
Lead	11.8	mg/kg	0.50	6020	10/02/08 13:51	SLS	7439-92-1	
Mercury	0.054	mg/kg	0.050	7471A	10/02/08 14:23	JRT	7439-97-6	
Molybdenum	Not detected	mg/kg	0.50	6020	10/02/08 13:51	SLS	7439-98-7	
Nickel	8.6	mg/kg	1.0	6020	10/02/08 13:51	SLS	7440-02-0	
Selenium	Not detected	mg/kg	0.20	6020	10/02/08 13:51	SLS	7782-49-2	
Silver	Not detected	mg/kg	0.10	6020	10/02/08 13:51	SLS	7440-22-4	
Zinc	35.0	mg/kg	1.0	6020	10/02/08 13:51	SLS	7440-66-6	
Calcium	33.5	mg/L	1.0	200.8	10/02/08 12:17	PER	7440-70-2	
Magnesium	15.1	mg/L	0.20	200.8	10/02/08 12:17	PER	7439-95-4	
Sodium	3.02	mg/L	0.20	200.8	10/02/08 12:17	PER	7440-23-5	

Organics - Semi-Volatiles

TPH DRO (C10-C28)	3,700,000	ug/kg	200,000	8015B	10/02/08 12:04	ARH		XY
TPH ORO (C28-C36)	Not detected	ug/kg	200,000	8015M	10/02/08 12:04	ARH		XY

Organics - Volatiles

TPH GRO (C6-C10)	15,000,000	ug/kg	1,000,000	8015M	10/02/08 03:38	JGH		Y
------------------	------------	-------	-----------	-------	----------------	-----	--	---

X-Elevated reporting limit due to matrix interference Y-Elevated reporting limit due to high target concentration



Analytical Laboratory Report

Supplemental Report

Lab Sample ID: S38406.05
Sample Tag: 111763-EF-A-09
Collected Date/Time: 09/30/2008 12:35
Matrix: Soil
COC Reference: 51094

Sample Containers

#	Type	Preservative(s)	Refrigerated?	Arrival Temp. (C)	Thermometer #
2	8oz. Glass	None	Yes	3.9	IR

Analysis	Results	Units	RL	Method	Run Date/Time	Analyst	CAS #	Flags
Other / Misc.								
Hold until notified	Completed				10/01/08 12:00	BJR		



Analytical Laboratory Report

Supplemental Report

Lab Sample ID: S38406.06
Sample Tag: 111763-EF-B-09
Collected Date/Time: 09/30/2008 12:38
Matrix: Soil
COC Reference: 51094

Sample Containers

#	Type	Preservative(s)	Refrigerated?	Arrival Temp. (C)	Thermometer #
2	8oz. Glass	None	Yes	3.9	IR

Analysis	Results	Units	RL	Method	Run Date/Time	Analyst	CAS #	Flags
Other / Misc.								
Hold until notified	Completed				10/01/08 12:00	BJR		



Analytical Laboratory Report

Supplemental Report

Lab Sample ID: S38406.07
Sample Tag: 111763-EF-A-11
Collected Date/Time: 09/30/2008 12:42
Matrix: Soil
COC Reference: 51094

Sample Containers

#	Type	Preservative(s)	Refrigerated?	Arrival Temp. (C)	Thermometer #
2	8oz. Glass	None	Yes	3.9	IR

Analysis	Results	Units	RL	Method	Run Date/Time	Analyst	CAS #	Flags
----------	---------	-------	----	--------	---------------	---------	-------	-------

Extraction / Prep.

DRO Extraction	Completed			3510C	10/03/08 14:52	DLR		
Mercury Digestion	Completed			7471A	10/03/08 14:00	JRT		
Metal Digestion	Completed			3050B	10/06/08 12:00	SLS		
Metal Digestion	Completed			3015A	10/06/08 17:00	PER		
Sodium Adsorption Ratio Prep.	Completed			20B	10/03/08 11:00	DJS		

Inorganics

Conductivity	530	umhos/cm		120.1	10/03/08 14:45	JKB		
pH	8.87	STD Units	0.1	9045D	10/05/08 21:21	WAR		
Total Solids	90	%	1	Std M 2540 B	10/03/08 11:00	DJS		

Metals

Sodium Adsorption Ratio	0.147			20B	10/07/08 08:00	BJR		
Arsenic	5.24	mg/kg	0.10	6020	10/06/08 14:02	SLS	7440-38-2	
Barium	152	mg/kg	1.0	6020	10/06/08 14:02	SLS	7440-39-3	
Boron	2.13	mg/kg	2.0	6020	10/06/08 14:02	SLS	7440-42-8	
Cadmium	0.60	mg/kg	0.20	6020	10/06/08 14:02	SLS	7440-43-9	
Chromium	2.2	mg/kg	1.0	6020	10/06/08 14:02	SLS	7440-47-3	
Copper	17.2	mg/kg	1.0	6020	10/06/08 14:02	SLS	7440-50-8	
Lead	24.9	mg/kg	0.50	6020	10/06/08 14:02	SLS	7439-92-1	
Mercury	Not detected	mg/kg	0.050	7471A	10/03/08 16:09	JRT	7439-97-6	
Molybdenum	Not detected	mg/kg	0.50	6020	10/06/08 14:02	SLS	7439-98-7	
Nickel	18.5	mg/kg	1.0	6020	10/06/08 14:02	SLS	7440-02-0	
Selenium	0.40	mg/kg	0.20	6020	10/06/08 14:02	SLS	7782-49-2	
Silver	0.19	mg/kg	0.10	6020	10/06/08 14:02	SLS	7440-22-4	
Zinc	109	mg/kg	1.0	6020	10/06/08 14:02	SLS	7440-66-6	
Calcium	107	mg/L	1.0	200.8	10/06/08 17:56	PER	7440-70-2	
Magnesium	23.9	mg/L	0.20	200.8	10/06/08 17:56	PER	7439-95-4	
Sodium	6.45	mg/L	0.20	200.8	10/06/08 17:56	PER	7440-23-5	

Organics - Semi-Volatiles

TPH DRO (C10-C28)	1,800,000	ug/kg	100,000	8015B	10/03/08 19:08	ARH		X
TPH ORO (C28-C36)	Not detected	ug/kg	100,000	8015M	10/03/08 19:08	ARH		X

Organics - Volatiles

TPH GRO (C6-C10)	5,000,000	ug/kg	1,000,000	8015M	10/03/08 17:50	JGH		Y
------------------	-----------	-------	-----------	-------	----------------	-----	--	---

X-Elevated reporting limit due to matrix interference

Y-Elevated reporting limit due to high target concentration



Analytical Laboratory Report

Supplemental Report

Lab Sample ID: S38406.08
Sample Tag: 111763-EF-B-11
Collected Date/Time: 09/30/2008 12:45
Matrix: Soil
COC Reference: 51094

Sample Containers

#	Type	Preservative(s)	Refrigerated?	Arrival Temp. (C)	Thermometer #
2	8oz. Glass	None	Yes	3.9	IR

Analysis	Results	Units	RL	Method	Run Date/Time	Analyst	CAS #	Flags
----------	---------	-------	----	--------	---------------	---------	-------	-------

Extraction / Prep.

DRO Extraction	Completed			3510C	10/03/08 14:52	DLR		
Mercury Digestion	Completed			7471A	10/03/08 14:00	JRT		
Metal Digestion	Completed			3050B	10/06/08 12:00	SLS		
Metal Digestion	Completed			3015A	10/06/08 17:00	PER		
Sodium Adsorption Ratio Prep.	Completed			20B	10/03/08 11:00	DJS		

Inorganics

Conductivity	450	umhos/cm		120.1	10/03/08 14:50	JKB		
pH	8.45	STD Units	0.1	9045D	10/05/08 21:21	WAR		
Total Solids	90	%	1	Std M 2540 B	10/03/08 11:00	DJS		

Metals

Sodium Adsorption Ratio	0.106			20B	10/07/08 08:00	BJR		
Arsenic	2.31	mg/kg	0.10	6020	10/06/08 14:06	SLS	7440-38-2	
Barium	86.5	mg/kg	1.0	6020	10/06/08 14:06	SLS	7440-39-3	
Boron	Not detected	mg/kg	2.0	6020	10/06/08 14:06	SLS	7440-42-8	
Cadmium	0.25	mg/kg	0.20	6020	10/06/08 14:06	SLS	7440-43-9	
Chromium	1.5	mg/kg	1.0	6020	10/06/08 14:06	SLS	7440-47-3	
Copper	10.7	mg/kg	1.0	6020	10/06/08 14:06	SLS	7440-50-8	
Lead	14.0	mg/kg	0.50	6020	10/06/08 14:06	SLS	7439-92-1	
Mercury	Not detected	mg/kg	0.050	7471A	10/03/08 16:11	JRT	7439-97-6	
Molybdenum	Not detected	mg/kg	0.50	6020	10/06/08 14:06	SLS	7439-98-7	
Nickel	9.9	mg/kg	1.0	6020	10/06/08 14:06	SLS	7440-02-0	
Selenium	0.27	mg/kg	0.20	6020	10/06/08 14:06	SLS	7782-49-2	
Silver	Not detected	mg/kg	0.10	6020	10/06/08 14:06	SLS	7440-22-4	
Zinc	42.3	mg/kg	1.0	6020	10/06/08 14:06	SLS	7440-66-6	
Calcium	72.2	mg/L	1.0	200.8	10/06/08 17:57	PER	7440-70-2	
Magnesium	15.2	mg/L	0.20	200.8	10/06/08 17:57	PER	7439-95-4	
Sodium	3.81	mg/L	0.20	200.8	10/06/08 17:57	PER	7440-23-5	

Organics - Semi-Volatiles

TPH DRO (C10-C28)	1,800,000	ug/kg	100,000	8015B	10/03/08 19:29	ARH		X
TPH ORO (C28-C36)	Not detected	ug/kg	100,000	8015M	10/03/08 19:29	ARH		X

Organics - Volatiles

TPH GRO (C6-C10)	10,000,000	ug/kg	1,000,000	8015M	10/03/08 18:08	JGH		Y
------------------	------------	-------	-----------	-------	----------------	-----	--	---

X-Elevated reporting limit due to matrix interference

Y-Elevated reporting limit due to high target concentration



Analytical Laboratory Report

Supplemental Report

Lab Sample ID: S38406.09
Sample Tag: 111763-SW-C-01-05
Collected Date/Time: 09/30/2008 12:57
Matrix: Soil
COC Reference: 51094

Sample Containers

#	Type	Preservative(s)	Refrigerated?	Arrival Temp. (C)	Thermometer #
2	8oz. Glass	None	Yes	3.9	IR

Analysis	Results	Units	RL	Method	Run Date/Time	Analyst	CAS #	Flags
Extraction / Prep.								
DRO Extraction	Completed			3510C	10/01/08 14:20	PL		
Mercury Digestion	Completed			7471A	10/02/08 10:30	JRT		
Metal Digestion	Completed			3050B	10/02/08 12:00	SLS		
Metal Digestion	Completed			3015A	10/02/08 10:00	PER		
Sodium Adsorption Ratio Prep.	Completed			20B	10/01/08 14:16	DJS		
Inorganics								
Conductivity	628	umhos/cm		120.1	10/02/08 13:10	JKB		
pH	8.07	STD Units	0.1	9045D	10/02/08 15:26	WAR		
Total Solids	81	%	1	Std M 2540 B	10/01/08 13:25	WAR		
Metals								
Sodium Adsorption Ratio	0.53			20B	10/02/08 15:35	BJR		
Arsenic	2.58	mg/kg	0.10	6020	10/02/08 13:55	SLS	7440-38-2	
Barium	88.6	mg/kg	1.0	6020	10/02/08 13:55	SLS	7440-39-3	
Boron	Not detected	mg/kg	2.0	6020	10/02/08 13:55	SLS	7440-42-8	
Cadmium	Not detected	mg/kg	0.20	6020	10/02/08 13:55	SLS	7440-43-9	
Chromium	1.2	mg/kg	1.0	6020	10/02/08 13:55	SLS	7440-47-3	
Copper	9.4	mg/kg	1.0	6020	10/02/08 13:55	SLS	7440-50-8	
Lead	11.5	mg/kg	0.50	6020	10/02/08 13:55	SLS	7439-92-1	
Mercury	Not detected	mg/kg	0.050	7471A	10/02/08 14:25	JRT	7439-97-6	
Molybdenum	Not detected	mg/kg	0.50	6020	10/02/08 13:55	SLS	7439-98-7	
Nickel	7.2	mg/kg	1.0	6020	10/02/08 13:55	SLS	7440-02-0	
Selenium	Not detected	mg/kg	0.20	6020	10/02/08 13:55	SLS	7782-49-2	
Silver	Not detected	mg/kg	0.10	6020	10/02/08 13:55	SLS	7440-22-4	
Zinc	32.2	mg/kg	1.0	6020	10/02/08 13:55	SLS	7440-66-6	
Calcium	39.5	mg/L	1.0	200.8	10/02/08 12:19	PER	7440-70-2	
Magnesium	46.6	mg/L	0.20	200.8	10/02/08 12:19	PER	7439-95-4	
Sodium	20.6	mg/L	0.20	200.8	10/02/08 12:19	PER	7440-23-5	
Organics - Semi-Volatiles								
TPH DRO (C10-C28)	500,000	ug/kg	200,000	8015B	10/02/08 12:25	ARH		XY
TPH ORO (C28-C36)	Not detected	ug/kg	200,000	8015M	10/02/08 12:25	ARH		XY
Organics - Volatiles								
TPH GRO (C6-C10)	8,000,000	ug/kg	1,000,000	8015M	10/02/08 03:56	JGH		Y

X-Elevated reporting limit due to matrix interference Y-Elevated reporting limit due to high target concentration



Analytical Laboratory Report

Supplemental Report

Lab Sample ID: S38406.10
Sample Tag: 111763-SW-C-03-05
Collected Date/Time: 09/30/2008 12:59
Matrix: Soil
COC Reference: 51094

Sample Containers

#	Type	Preservative(s)	Refrigerated?	Arrival Temp. (C)	Thermometer #
2	8oz. Glass	None	Yes	3.9	IR

Analysis	Results	Units	RL	Method	Run Date/Time	Analyst	CAS #	Flags
----------	---------	-------	----	--------	---------------	---------	-------	-------

Extraction / Prep.

DRO Extraction	Completed			3510C	10/01/08 14:20	PL		
Mercury Digestion	Completed			7471A	10/02/08 10:30	JRT		
Metal Digestion	Completed			3050B	10/02/08 12:00	SLS		
Metal Digestion	Completed			3015A	10/02/08 10:00	PER		
Sodium Adsorption Ratio Prep.	Completed			20B	10/01/08 14:16	DJS		

Inorganics

Conductivity	1,810	umhos/cm		120.1	10/02/08 13:15	JKB		
pH	8.22	STD Units	0.1	9045D	10/02/08 15:26	WAR		
Total Solids	92	%	1	Std M 2540 B	10/01/08 13:25	WAR		

Metals

Sodium Adsorption Ratio	0.86			20B	10/02/08 15:35	BJR		
Arsenic	1.06	mg/kg	0.10	6020	10/02/08 14:15	SLS	7440-38-2	
Barium	58.4	mg/kg	1.0	6020	10/02/08 14:15	SLS	7440-39-3	
Boron	Not detected	mg/kg	2.0	6020	10/02/08 14:15	SLS	7440-42-8	
Cadmium	Not detected	mg/kg	0.20	6020	10/02/08 14:15	SLS	7440-43-9	
Chromium	Not detected	mg/kg	1.0	6020	10/02/08 14:15	SLS	7440-47-3	
Copper	5.2	mg/kg	1.0	6020	10/02/08 14:15	SLS	7440-50-8	
Lead	6.42	mg/kg	0.50	6020	10/02/08 14:15	SLS	7439-92-1	
Mercury	Not detected	mg/kg	0.050	7471A	10/02/08 14:27	JRT	7439-97-6	
Molybdenum	Not detected	mg/kg	0.50	6020	10/02/08 14:15	SLS	7439-98-7	
Nickel	5.3	mg/kg	1.0	6020	10/02/08 14:15	SLS	7440-02-0	
Selenium	Not detected	mg/kg	0.20	6020	10/02/08 14:15	SLS	7782-49-2	
Silver	Not detected	mg/kg	0.10	6020	10/02/08 14:15	SLS	7440-22-4	
Zinc	9.2	mg/kg	1.0	6020	10/02/08 14:15	SLS	7440-66-6	
Calcium	70.0	mg/L	1.0	200.8	10/02/08 12:21	PER	7440-70-2	
Magnesium	117	mg/L	0.20	200.8	10/02/08 12:21	PER	7439-95-4	
Sodium	50.4	mg/L	0.20	200.8	10/02/08 12:21	PER	7440-23-5	

Organics - Semi-Volatiles

TPH DRO (C10-C28)	25,000	ug/kg	4,000	8015B	10/02/08 12:46	ARH		XY
TPH ORO (C28-C36)	Not detected	ug/kg	4,000	8015M	10/02/08 12:46	ARH		XY

Organics - Volatiles

TPH GRO (C6-C10)	21,000	ug/kg	6,000	8015M	10/02/08 14:16	JGH		Y
------------------	--------	-------	-------	-------	----------------	-----	--	---

X-Elevated reporting limit due to matrix interference Y-Elevated reporting limit due to high target concentration



Analytical Laboratory Report

Supplemental Report

Lab Sample ID: S38406.11
Sample Tag: 111763-SW-C-05-05
Collected Date/Time: 09/30/2008 13:02
Matrix: Soil
COC Reference: 51094

Sample Containers

#	Type	Preservative(s)	Refrigerated?	Arrival Temp. (C)	Thermometer #
2	8oz. Glass	None	Yes	3.9	IR

Analysis	Results	Units	RL	Method	Run Date/Time	Analyst	CAS #	Flags
Other / Misc.								
Hold until notified	Completed				10/01/08 12:00	BJR		



Analytical Laboratory Report

Supplemental Report

Lab Sample ID: S38406.12
Sample Tag: 111763-SW-C-07-05
Collected Date/Time: 09/30/2008 13:07
Matrix: Soil
COC Reference: 51094

Sample Containers

#	Type	Preservative(s)	Refrigerated?	Arrival Temp. (C)	Thermometer #
2	8oz. Glass	None	Yes	3.9	IR

Analysis	Results	Units	RL	Method	Run Date/Time	Analyst	CAS #	Flags
Other / Misc.								
Hold until notified	Completed				10/01/08 12:00	BJR		



Analytical Laboratory Report

Supplemental Report

Lab Sample ID: S38406.13
Sample Tag: 111763-SW-B-01-05
Collected Date/Time: 09/30/2008 13:17
Matrix: Soil
COC Reference: 51095

Sample Containers

#	Type	Preservative(s)	Refrigerated?	Arrival Temp. (C)	Thermometer #
2	8oz. Glass	None	Yes	3.9	IR

Analysis	Results	Units	RL	Method	Run Date/Time	Analyst	CAS #	Flags
----------	---------	-------	----	--------	---------------	---------	-------	-------

Extraction / Prep.

DRO Extraction	Completed			3510C	10/01/08 14:20	PL		
Mercury Digestion	Completed			7471A	10/02/08 10:30	JRT		
Metal Digestion	Completed			3050B	10/02/08 12:00	SLS		
Metal Digestion	Completed			3015A	10/02/08 10:00	PER		
Sodium Adsorption Ratio Prep.	Completed			20B	10/01/08 14:16	DJS		

Inorganics

Conductivity	1,120	umhos/cm		120.1	10/02/08 13:20	JKB		
pH	7.91	STD Units	0.1	9045D	10/02/08 15:26	WAR		
Total Solids	86	%	1	Std M 2540 B	10/01/08 13:25	WAR		

Metals

Sodium Adsorption Ratio	0.20			20B	10/02/08 15:35	BJR		
Arsenic	3.09	mg/kg	0.10	6020	10/02/08 14:19	SLS	7440-38-2	
Barium	82.1	mg/kg	1.0	6020	10/02/08 14:19	SLS	7440-39-3	
Boron	2.60	mg/kg	2.0	6020	10/02/08 14:19	SLS	7440-42-8	
Cadmium	0.26	mg/kg	0.20	6020	10/02/08 14:19	SLS	7440-43-9	
Chromium	1.6	mg/kg	1.0	6020	10/02/08 14:19	SLS	7440-47-3	
Copper	10.3	mg/kg	1.0	6020	10/02/08 14:19	SLS	7440-50-8	
Lead	9.81	mg/kg	0.50	6020	10/02/08 14:19	SLS	7439-92-1	
Mercury	Not detected	mg/kg	0.050	7471A	10/02/08 14:36	JRT	7439-97-6	
Molybdenum	Not detected	mg/kg	0.50	6020	10/02/08 14:19	SLS	7439-98-7	
Nickel	8.5	mg/kg	1.0	6020	10/02/08 14:19	SLS	7440-02-0	
Selenium	0.20	mg/kg	0.20	6020	10/02/08 14:19	SLS	7782-49-2	
Silver	Not detected	mg/kg	0.10	6020	10/02/08 14:19	SLS	7440-22-4	
Zinc	38.3	mg/kg	1.0	6020	10/02/08 14:19	SLS	7440-66-6	
Calcium	56.9	mg/L	1.0	200.8	10/02/08 12:42	PER	7440-70-2	
Magnesium	23.1	mg/L	0.20	200.8	10/02/08 12:42	PER	7439-95-4	
Sodium	7.09	mg/L	0.20	200.8	10/02/08 12:42	PER	7440-23-5	

Organics - Semi-Volatiles

TPH DRO (C10-C28)	2,800,000	ug/kg	100,000	8015B	10/02/08 04:24	ARH		XY
TPH ORO (C28-C36)	Not detected	ug/kg	100,000	8015M	10/02/08 04:24	ARH		XY

Organics - Volatiles

TPH GRO (C6-C10)	8,000,000	ug/kg	1,000,000	8015M	10/02/08 04:14	JGH		Y
------------------	-----------	-------	-----------	-------	----------------	-----	--	---

X-Elevated reporting limit due to matrix interference Y-Elevated reporting limit due to high target concentration



Analytical Laboratory Report

Supplemental Report

Lab Sample ID: S38406.14
Sample Tag: 111763-SW-B-03-05
Collected Date/Time: 09/30/2008 13:20
Matrix: Soil
COC Reference: 51095

Sample Containers

#	Type	Preservative(s)	Refrigerated?	Arrival Temp. (C)	Thermometer #
2	8oz. Glass	None	Yes	3.9	IR

Analysis	Results	Units	RL	Method	Run Date/Time	Analyst	CAS #	Flags
----------	---------	-------	----	--------	---------------	---------	-------	-------

Extraction / Prep.

DRO Extraction	Completed			3510C	10/01/08 14:20	PL		
Mercury Digestion	Completed			7471A	10/02/08 10:30	JRT		
Metal Digestion	Completed			3050B	10/02/08 12:00	SLS		
Metal Digestion	Completed			3015A	10/02/08 10:00	PER		
Sodium Adsorption Ratio Prep.	Completed			20B	10/01/08 14:16	DJS		

Inorganics

Conductivity	1,190	umhos/cm		120.1	10/02/08 13:25	JKB		
pH	8.03	STD Units	0.1	9045D	10/02/08 15:26	WAR		
Total Solids	90	%	1	Std M 2540 B	10/01/08 13:25	WAR		

Metals

Sodium Adsorption Ratio	0.38			20B	10/02/08 15:35	BJR		
Arsenic	1.27	mg/kg	0.10	6020	10/02/08 14:23	SLS	7440-38-2	
Barium	58.7	mg/kg	1.0	6020	10/02/08 14:23	SLS	7440-39-3	
Boron	Not detected	mg/kg	2.0	6020	10/02/08 14:23	SLS	7440-42-8	
Cadmium	Not detected	mg/kg	0.20	6020	10/02/08 14:23	SLS	7440-43-9	
Chromium	Not detected	mg/kg	1.0	6020	10/02/08 14:23	SLS	7440-47-3	
Copper	6.0	mg/kg	1.0	6020	10/02/08 14:23	SLS	7440-50-8	
Lead	7.48	mg/kg	0.50	6020	10/02/08 14:23	SLS	7439-92-1	
Mercury	Not detected	mg/kg	0.050	7471A	10/02/08 14:38	JRT	7439-97-6	
Molybdenum	Not detected	mg/kg	0.50	6020	10/02/08 14:23	SLS	7439-98-7	
Nickel	4.2	mg/kg	1.0	6020	10/02/08 14:23	SLS	7440-02-0	
Selenium	Not detected	mg/kg	0.20	6020	10/02/08 14:23	SLS	7782-49-2	
Silver	Not detected	mg/kg	0.10	6020	10/02/08 14:23	SLS	7440-22-4	
Zinc	15.6	mg/kg	1.0	6020	10/02/08 14:23	SLS	7440-66-6	
Calcium	42.0	mg/L	1.0	200.8	10/02/08 12:46	PER	7440-70-2	
Magnesium	40.1	mg/L	0.20	200.8	10/02/08 12:46	PER	7439-95-4	
Sodium	14.3	mg/L	0.20	200.8	10/02/08 12:46	PER	7440-23-5	

Organics - Semi-Volatiles

TPH DRO (C10-C28)	900,000	ug/kg	100,000	8015B	10/02/08 04:45	ARH		XY
TPH ORO (C28-C36)	Not detected	ug/kg	100,000	8015M	10/02/08 04:45	ARH		XY

Organics - Volatiles

TPH GRO (C6-C10)	11,100,000	ug/kg	600,000	8015M	10/02/08 15:40	JGH		Y
------------------	------------	-------	---------	-------	----------------	-----	--	---

X-Elevated reporting limit due to matrix interference Y-Elevated reporting limit due to high target concentration



Analytical Laboratory Report

Supplemental Report

Lab Sample ID: S38406.15
Sample Tag: 111763-SW-B-05-05
Collected Date/Time: 09/30/2008 13:25
Matrix: Soil
COC Reference: 51095

Sample Containers

#	Type	Preservative(s)	Refrigerated?	Arrival Temp. (C)	Thermometer #
2	8oz. Glass	None	Yes	3.9	IR

Analysis	Results	Units	RL	Method	Run Date/Time	Analyst	CAS #	Flags
Extraction / Prep.								
DRO Extraction	Completed			3510C	10/03/08 14:52	DLR		
Mercury Digestion	Completed			7471A	10/03/08 14:00	JRT		
Metal Digestion	Completed			3050B	10/06/08 12:00	SLS		
Metal Digestion	Completed			3015A	10/06/08 17:00	PER		
Sodium Adsorption Ratio Prep.	Completed			20B	10/03/08 11:00	DJS		
Inorganics								
Conductivity	925	umhos/cm		120.1	10/03/08 14:55	JKB		
pH	8.32	STD Units	0.1	9045D	10/05/08 21:21	WAR		
Total Solids	92	%	1	Std M 2540 B	10/03/08 11:00	DJS		
Metals								
Sodium Adsorption Ratio	1.00			20B	10/07/08 08:00	BJR		
Arsenic	0.77	mg/kg	0.10	6020	10/06/08 14:11	SLS	7440-38-2	
Barium	45.9	mg/kg	1.0	6020	10/06/08 14:11	SLS	7440-39-3	
Boron	Not detected	mg/kg	2.0	6020	10/06/08 14:11	SLS	7440-42-8	
Cadmium	Not detected	mg/kg	0.20	6020	10/06/08 14:11	SLS	7440-43-9	
Chromium	Not detected	mg/kg	1.0	6020	10/06/08 14:11	SLS	7440-47-3	
Copper	5.2	mg/kg	1.0	6020	10/06/08 14:11	SLS	7440-50-8	
Lead	5.36	mg/kg	0.50	6020	10/06/08 14:11	SLS	7439-92-1	
Mercury	Not detected	mg/kg	0.050	7471A	10/03/08 16:13	JRT	7439-97-6	
Molybdenum	Not detected	mg/kg	0.50	6020	10/06/08 14:11	SLS	7439-98-7	
Nickel	5.2	mg/kg	1.0	6020	10/06/08 14:11	SLS	7440-02-0	
Selenium	Not detected	mg/kg	0.20	6020	10/06/08 14:11	SLS	7782-49-2	
Silver	Not detected	mg/kg	0.10	6020	10/06/08 14:11	SLS	7440-22-4	
Zinc	5.5	mg/kg	1.0	6020	10/06/08 14:11	SLS	7440-66-6	
Calcium	117	mg/L	1.0	200.8	10/06/08 17:59	PER	7440-70-2	
Magnesium	124	mg/L	0.20	200.8	10/06/08 17:59	PER	7439-95-4	
Sodium	65.2	mg/L	0.20	200.8	10/06/08 17:59	PER	7440-23-5	
Organics - Semi-Volatiles								
TPH DRO (C10-C28)	Not detected	ug/kg	4,000	8015B	10/06/08 12:27	ARH		
TPH ORO (C28-C36)	Not detected	ug/kg	4,000	8015M	10/06/08 12:27	ARH		
Organics - Volatiles								
TPH GRO (C6-C10)	Not detected	ug/kg	1,000	8015M	10/03/08 15:06	JGH		



Analytical Laboratory Report

Supplemental Report

Lab Sample ID: S38406.16
Sample Tag: 111763-SW-B-07-05
Collected Date/Time: 09/30/2008 13:27
Matrix: Soil
COC Reference: 51095

Sample Containers

#	Type	Preservative(s)	Refrigerated?	Arrival Temp. (C)	Thermometer #
2	8oz. Glass	None	Yes	3.9	IR

Analysis	Results	Units	RL	Method	Run Date/Time	Analyst	CAS #	Flags
Other / Misc.								
Hold until notified	Completed				10/01/08 12:00	BJR		



Analytical Laboratory Report

Supplemental Report

Lab Sample ID: S38406.17
Sample Tag: 111763-SW-D-01-05
Collected Date/Time: 09/30/2008 13:49
Matrix: Soil
COC Reference: 51095

Sample Containers

#	Type	Preservative(s)	Refrigerated?	Arrival Temp. (C)	Thermometer #
2	8oz. Glass	None	Yes	3.9	IR

Analysis	Results	Units	RL	Method	Run Date/Time	Analyst	CAS #	Flags
----------	---------	-------	----	--------	---------------	---------	-------	-------

Extraction / Prep.

DRO Extraction	Completed			3510C	10/01/08 14:20	PL		
Mercury Digestion	Completed			7471A	10/02/08 10:30	JRT		
Metal Digestion	Completed			3050B	10/02/08 12:00	SLS		
Metal Digestion	Completed			3015A	10/02/08 10:00	PER		
Sodium Adsorption Ratio Prep.	Completed			20B	10/01/08 14:16	DJS		

Inorganics

Conductivity	1,300	umhos/cm		120.1	10/02/08 13:30	JKB		
pH	8.04	STD Units	0.1	9045D	10/02/08 15:26	WAR		
Total Solids	88	%	1	Std M 2540 B	10/01/08 13:25	WAR		

Metals

Sodium Adsorption Ratio	0.34			20B	10/02/08 15:35	BJR		
Arsenic	4.03	mg/kg	0.10	6020	10/02/08 14:27	SLS	7440-38-2	
Barium	69.7	mg/kg	1.0	6020	10/02/08 14:27	SLS	7440-39-3	
Boron	2.49	mg/kg	2.0	6020	10/02/08 14:27	SLS	7440-42-8	
Cadmium	0.21	mg/kg	0.20	6020	10/02/08 14:27	SLS	7440-43-9	
Chromium	1.4	mg/kg	1.0	6020	10/02/08 14:27	SLS	7440-47-3	
Copper	9.2	mg/kg	1.0	6020	10/02/08 14:27	SLS	7440-50-8	
Lead	10.6	mg/kg	0.50	6020	10/02/08 14:27	SLS	7439-92-1	
Mercury	Not detected	mg/kg	0.050	7471A	10/02/08 14:40	JRT	7439-97-6	
Molybdenum	Not detected	mg/kg	0.50	6020	10/02/08 14:27	SLS	7439-98-7	
Nickel	8.3	mg/kg	1.0	6020	10/02/08 14:27	SLS	7440-02-0	
Selenium	Not detected	mg/kg	0.20	6020	10/02/08 14:27	SLS	7782-49-2	
Silver	Not detected	mg/kg	0.10	6020	10/02/08 14:27	SLS	7440-22-4	
Zinc	38.4	mg/kg	1.0	6020	10/02/08 14:27	SLS	7440-66-6	
Calcium	57.4	mg/L	1.0	200.8	10/02/08 12:50	PER	7440-70-2	
Magnesium	55.6	mg/L	0.20	200.8	10/02/08 12:50	PER	7439-95-4	
Sodium	14.9	mg/L	0.20	200.8	10/02/08 12:50	PER	7440-23-5	

Organics - Semi-Volatiles

TPH DRO (C10-C28)	3,100,000	ug/kg	100,000	8015B	10/02/08 05:06	ARH		XY
TPH ORO (C28-C36)	Not detected	ug/kg	100,000	8015M	10/02/08 05:06	ARH		XY

Organics - Volatiles

TPH GRO (C6-C10)	9,000,000	ug/kg	1,000,000	8015M	10/02/08 04:50	JGH		Y
------------------	-----------	-------	-----------	-------	----------------	-----	--	---

X-Elevated reporting limit due to matrix interference Y-Elevated reporting limit due to high target concentration



Analytical Laboratory Report

Supplemental Report

Lab Sample ID: S38406.18
Sample Tag: 111763-SW-D-03-05
Collected Date/Time: 09/30/2008 13:53
Matrix: Soil
COC Reference: 51095

Sample Containers

#	Type	Preservative(s)	Refrigerated?	Arrival Temp. (C)	Thermometer #
2	8oz. Glass	None	Yes	3.9	IR

Analysis	Results	Units	RL	Method	Run Date/Time	Analyst	CAS #	Flags
----------	---------	-------	----	--------	---------------	---------	-------	-------

Extraction / Prep.

DRO Extraction	Completed			3510C	10/01/08 14:20	PL		
Mercury Digestion	Completed			7471A	10/02/08 10:30	JRT		
Metal Digestion	Completed			3050B	10/02/08 12:00	SLS		
Metal Digestion	Completed			3015A	10/02/08 10:00	PER		
Sodium Adsorption Ratio Prep.	Completed			20B	10/01/08 14:16	DJS		

Inorganics

Conductivity	1,520	umhos/cm		120.1	10/02/08 13:35	JKB		
pH	8.01	STD Units	0.1	9045D	10/02/08 15:26	WAR		
Total Solids	95	%	1	Std M 2540 B	10/01/08 13:25	WAR		

Metals

Sodium Adsorption Ratio	0.57			20B	10/02/08 15:35	BJR		
Arsenic	1.21	mg/kg	0.10	6020	10/02/08 14:31	SLS	7440-38-2	
Barium	88.8	mg/kg	1.0	6020	10/02/08 14:31	SLS	7440-39-3	
Boron	Not detected	mg/kg	2.0	6020	10/02/08 14:31	SLS	7440-42-8	
Cadmium	0.27	mg/kg	0.20	6020	10/02/08 14:31	SLS	7440-43-9	
Chromium	Not detected	mg/kg	1.0	6020	10/02/08 14:31	SLS	7440-47-3	
Copper	7.7	mg/kg	1.0	6020	10/02/08 14:31	SLS	7440-50-8	
Lead	8.30	mg/kg	0.50	6020	10/02/08 14:31	SLS	7439-92-1	
Mercury	Not detected	mg/kg	0.050	7471A	10/02/08 14:41	JRT	7439-97-6	
Molybdenum	Not detected	mg/kg	0.50	6020	10/02/08 14:31	SLS	7439-98-7	
Nickel	8.2	mg/kg	1.0	6020	10/02/08 14:31	SLS	7440-02-0	
Selenium	Not detected	mg/kg	0.20	6020	10/02/08 14:31	SLS	7782-49-2	
Silver	Not detected	mg/kg	0.10	6020	10/02/08 14:31	SLS	7440-22-4	
Zinc	10.3	mg/kg	1.0	6020	10/02/08 14:31	SLS	7440-66-6	
Calcium	116	mg/L	1.0	200.8	10/02/08 12:52	PER	7440-70-2	
Magnesium	79.5	mg/L	0.20	200.8	10/02/08 12:52	PER	7439-95-4	
Sodium	32.5	mg/L	0.20	200.8	10/02/08 12:52	PER	7440-23-5	

Organics - Semi-Volatiles

TPH DRO (C10-C28)	390,000	ug/kg	40,000	8015B	10/02/08 13:07	ARH		XY
TPH ORO (C28-C36)	Not detected	ug/kg	40,000	8015M	10/02/08 13:07	ARH		XY

Organics - Volatiles

TPH GRO (C6-C10)	136,000	ug/kg	6,000	8015M	10/02/08 14:34	JGH		Y
------------------	---------	-------	-------	-------	----------------	-----	--	---

X-Elevated reporting limit due to matrix interference Y-Elevated reporting limit due to high target concentration



Analytical Laboratory Report

Supplemental Report

Lab Sample ID: S38406.19
Sample Tag: 111763-SW-D-05-05
Collected Date/Time: 09/30/2008 13:57
Matrix: Soil
COC Reference: 51095

Sample Containers

#	Type	Preservative(s)	Refrigerated?	Arrival Temp. (C)	Thermometer #
2	8oz. Glass	None	Yes	3.9	IR

Analysis	Results	Units	RL	Method	Run Date/Time	Analyst	CAS #	Flags
Other / Misc.								
Hold until notified	Completed				10/01/08 12:00	BJR		



Analytical Laboratory Report

Supplemental Report

Lab Sample ID: S38406.20
Sample Tag: 111763-SW-D-07-05
Collected Date/Time: 09/30/2008 14:00
Matrix: Soil
COC Reference: 51095

Sample Containers

#	Type	Preservative(s)	Refrigerated?	Arrival Temp. (C)	Thermometer #
2	8oz. Glass	None	Yes	3.9	IR

Analysis	Results	Units	RL	Method	Run Date/Time	Analyst	CAS #	Flags
Other / Misc.								
Hold until notified	Completed				10/01/08 12:00	BJR		



Analytical Laboratory Report

Supplemental Report

Lab Sample ID: S38406.21
Sample Tag: 111763-SW-A-01-05
Collected Date/Time: 09/30/2008 14:14
Matrix: Soil
COC Reference: 51095

Sample Containers

#	Type	Preservative(s)	Refrigerated?	Arrival Temp. (C)	Thermometer #
2	8oz. Glass	None	Yes	3.9	IR

Analysis	Results	Units	RL	Method	Run Date/Time	Analyst	CAS #	Flags
----------	---------	-------	----	--------	---------------	---------	-------	-------

Extraction / Prep.

DRO Extraction	Completed			3510C	10/01/08 14:20	PL		
Mercury Digestion	Completed			7471A	10/02/08 10:30	JRT		
Metal Digestion	Completed			3050B	10/02/08 12:00	SLS		
Metal Digestion	Completed			3015A	10/02/08 10:00	PER		
Sodium Adsorption Ratio Prep.	Completed			20B	10/01/08 14:16	DJS		

Inorganics

Conductivity	865	umhos/cm		120.1	10/02/08 13:40	JKB		
pH	8.08	STD Units	0.1	9045D	10/02/08 15:26	WAR		
Total Solids	87	%	1	Std M 2540 B	10/01/08 13:25	WAR		

Metals

Sodium Adsorption Ratio	0.47			20B	10/02/08 15:35	BJR		
Arsenic	3.99	mg/kg	0.10	6020	10/02/08 14:35	SLS	7440-38-2	
Barium	53.9	mg/kg	1.0	6020	10/02/08 14:35	SLS	7440-39-3	
Boron	2.06	mg/kg	2.0	6020	10/02/08 14:35	SLS	7440-42-8	
Cadmium	Not detected	mg/kg	0.20	6020	10/02/08 14:35	SLS	7440-43-9	
Chromium	1.4	mg/kg	1.0	6020	10/02/08 14:35	SLS	7440-47-3	
Copper	7.6	mg/kg	1.0	6020	10/02/08 14:35	SLS	7440-50-8	
Lead	10.8	mg/kg	0.50	6020	10/02/08 14:35	SLS	7439-92-1	
Mercury	Not detected	mg/kg	0.050	7471A	10/02/08 14:43	JRT	7439-97-6	
Molybdenum	Not detected	mg/kg	0.50	6020	10/02/08 14:35	SLS	7439-98-7	
Nickel	8.1	mg/kg	1.0	6020	10/02/08 14:35	SLS	7440-02-0	
Selenium	Not detected	mg/kg	0.20	6020	10/02/08 14:35	SLS	7782-49-2	
Silver	Not detected	mg/kg	0.10	6020	10/02/08 14:35	SLS	7440-22-4	
Zinc	39.6	mg/kg	1.0	6020	10/02/08 14:35	SLS	7440-66-6	
Calcium	39.5	mg/L	1.0	200.8	10/02/08 12:54	PER	7440-70-2	
Magnesium	91.7	mg/L	0.20	200.8	10/02/08 12:54	PER	7439-95-4	
Sodium	23.7	mg/L	0.20	200.8	10/02/08 12:54	PER	7440-23-5	

Organics - Semi-Volatiles

TPH DRO (C10-C28)	1,400,000	ug/kg	100,000	8015B	10/02/08 05:48	ARH		XY
TPH ORO (C28-C36)	Not detected	ug/kg	100,000	8015M	10/02/08 05:48	ARH		XY

Organics - Volatiles

TPH GRO (C6-C10)	4,000,000	ug/kg	1,000,000	8015M	10/02/08 05:09	JGH		Y
------------------	-----------	-------	-----------	-------	----------------	-----	--	---

X-Elevated reporting limit due to matrix interference Y-Elevated reporting limit due to high target concentration



Analytical Laboratory Report

Supplemental Report

Lab Sample ID: S38406.22
Sample Tag: 111763-SW-A-03-05
Collected Date/Time: 09/30/2008 14:17
Matrix: Soil
COC Reference: 51095

Sample Containers

#	Type	Preservative(s)	Refrigerated?	Arrival Temp. (C)	Thermometer #
2	8oz. Glass	None	Yes	3.9	IR

Analysis	Results	Units	RL	Method	Run Date/Time	Analyst	CAS #	Flags
----------	---------	-------	----	--------	---------------	---------	-------	-------

Extraction / Prep.

DRO Extraction	Completed			3510C	10/01/08 14:20	PL		
Mercury Digestion	Completed			7471A	10/02/08 10:30	JRT		
Metal Digestion	Completed			3050B	10/02/08 12:00	SLS		
Metal Digestion	Completed			3015A	10/02/08 10:00	PER		
Sodium Adsorption Ratio Prep.	Completed			20B	10/01/08 14:16	DJS		

Inorganics

Conductivity	1,180	umhos/cm		120.1	10/02/08 13:45	JKB		
pH	8.37	STD Units	0.1	9045D	10/02/08 15:26	WAR		
Total Solids	88	%	1	Std M 2540 B	10/01/08 13:25	WAR		

Metals

Sodium Adsorption Ratio	0.51			20B	10/02/08 15:35	BJR		
Arsenic	2.11	mg/kg	0.10	6020	10/02/08 14:39	SLS	7440-38-2	
Barium	97.8	mg/kg	1.0	6020	10/02/08 14:39	SLS	7440-39-3	
Boron	Not detected	mg/kg	2.0	6020	10/02/08 14:39	SLS	7440-42-8	
Cadmium	0.27	mg/kg	0.20	6020	10/02/08 14:39	SLS	7440-43-9	
Chromium	1.6	mg/kg	1.0	6020	10/02/08 14:39	SLS	7440-47-3	
Copper	10.2	mg/kg	1.0	6020	10/02/08 14:39	SLS	7440-50-8	
Lead	10.4	mg/kg	0.50	6020	10/02/08 14:39	SLS	7439-92-1	
Mercury	Not detected	mg/kg	0.050	7471A	10/02/08 14:46	JRT	7439-97-6	
Molybdenum	Not detected	mg/kg	0.50	6020	10/02/08 14:39	SLS	7439-98-7	
Nickel	9.2	mg/kg	1.0	6020	10/02/08 14:39	SLS	7440-02-0	
Selenium	Not detected	mg/kg	0.20	6020	10/02/08 14:39	SLS	7782-49-2	
Silver	Not detected	mg/kg	0.10	6020	10/02/08 14:39	SLS	7440-22-4	
Zinc	35.3	mg/kg	1.0	6020	10/02/08 14:39	SLS	7440-66-6	
Calcium	40.7	mg/L	1.0	200.8	10/02/08 12:56	PER	7440-70-2	
Magnesium	92.2	mg/L	0.20	200.8	10/02/08 12:56	PER	7439-95-4	
Sodium	25.9	mg/L	0.20	200.8	10/02/08 12:56	PER	7440-23-5	

Organics - Semi-Volatiles

TPH DRO (C10-C28)	1,600,000	ug/kg	100,000	8015B	10/02/08 06:09	ARH		XY
TPH ORO (C28-C36)	Not detected	ug/kg	100,000	8015M	10/02/08 06:09	ARH		XY

Organics - Volatiles

TPH GRO (C6-C10)	9,000,000	ug/kg	1,000,000	8015M	10/02/08 05:27	JGH		Y
------------------	-----------	-------	-----------	-------	----------------	-----	--	---

X-Elevated reporting limit due to matrix interference Y-Elevated reporting limit due to high target concentration



Analytical Laboratory Report

Supplemental Report

Lab Sample ID: S38406.23
Sample Tag: 111763-SW-A-05-05
Collected Date/Time: 09/30/2008 14:20
Matrix: Soil
COC Reference: 51095

Sample Containers

#	Type	Preservative(s)	Refrigerated?	Arrival Temp. (C)	Thermometer #
2	8oz. Glass	None	Yes	3.9	IR

Analysis	Results	Units	RL	Method	Run Date/Time	Analyst	CAS #	Flags
----------	---------	-------	----	--------	---------------	---------	-------	-------

Extraction / Prep.

DRO Extraction	Completed			3510C	10/03/08 14:52	DLR		
Mercury Digestion	Completed			7471A	10/03/08 14:00	JRT		
Metal Digestion	Completed			3050B	10/06/08 12:00	SLS		
Metal Digestion	Completed			3015A	10/06/08 17:00	PER		
Metal Digestion (Replicate 01)	Completed			3015A	10/10/08 12:00	SLS		
Sodium Adsorption Ratio Prep.	Completed			20B	10/03/08 11:00	DJS		

Inorganics

Conductivity	410	umhos/cm		120.1	10/03/08 15:00	JKB		
pH	8.86	STD Units	0.1	9045D	10/05/08 21:21	WAR		
Total Solids	95	%	1	Std M 2540 B	10/03/08 11:00	DJS		

Metals

Hot Water Extraction	Completed				10/09/08 18:10	TAS		
Sodium Adsorption Ratio	0.259			20B	10/07/08 08:00	BJR		
Arsenic	0.50	mg/kg	0.10	6020	10/06/08 14:15	SLS	7440-38-2	
Barium	30.9	mg/kg	1.0	6020	10/06/08 14:15	SLS	7440-39-3	
Boron	Not detected	mg/kg	2.0	6020	10/06/08 14:15	SLS	7440-42-8	
Cadmium	Not detected	mg/kg	0.20	6020	10/06/08 14:15	SLS	7440-43-9	
Chromium	Not detected	mg/kg	1.0	6020	10/06/08 14:15	SLS	7440-47-3	
Copper	2.9	mg/kg	1.0	6020	10/06/08 14:15	SLS	7440-50-8	
Lead	3.59	mg/kg	0.50	6020	10/06/08 14:15	SLS	7439-92-1	
Mercury	Not detected	mg/kg	0.050	7471A	10/03/08 16:15	JRT	7439-97-6	
Molybdenum	Not detected	mg/kg	0.50	6020	10/06/08 14:15	SLS	7439-98-7	
Nickel	3.6	mg/kg	1.0	6020	10/06/08 14:15	SLS	7440-02-0	
Selenium	Not detected	mg/kg	0.20	6020	10/06/08 14:15	SLS	7782-49-2	
Silver	Not detected	mg/kg	0.10	6020	10/06/08 14:15	SLS	7440-22-4	
Zinc	5.5	mg/kg	1.0	6020	10/06/08 14:15	SLS	7440-66-6	
Boron	0.95	mg/L	0.02	200.8	10/10/08 16:18	SLS	7440-42-8	
Calcium	327	mg/L	1.0	200.8	10/06/08 18:02	PER	7440-70-2	
Magnesium	72.8	mg/L	0.20	200.8	10/06/08 18:02	PER	7439-95-4	
Sodium	19.9	mg/L	0.20	200.8	10/06/08 18:02	PER	7440-23-5	

Organics - Semi-Volatiles

TPH DRO (C10-C28)	15,000	ug/kg	4,000	8015B	10/06/08 12:48	ARH		
TPH ORO (C28-C36)	Not detected	ug/kg	4,000	8015M	10/06/08 12:48	ARH		

Organics - Volatiles

TPH GRO (C6-C10)	Not detected	ug/kg	1,000	8015M	10/07/08 14:19	JGH		
------------------	--------------	-------	-------	-------	----------------	-----	--	--