



02084579

RECEIVED

JUL -9 07

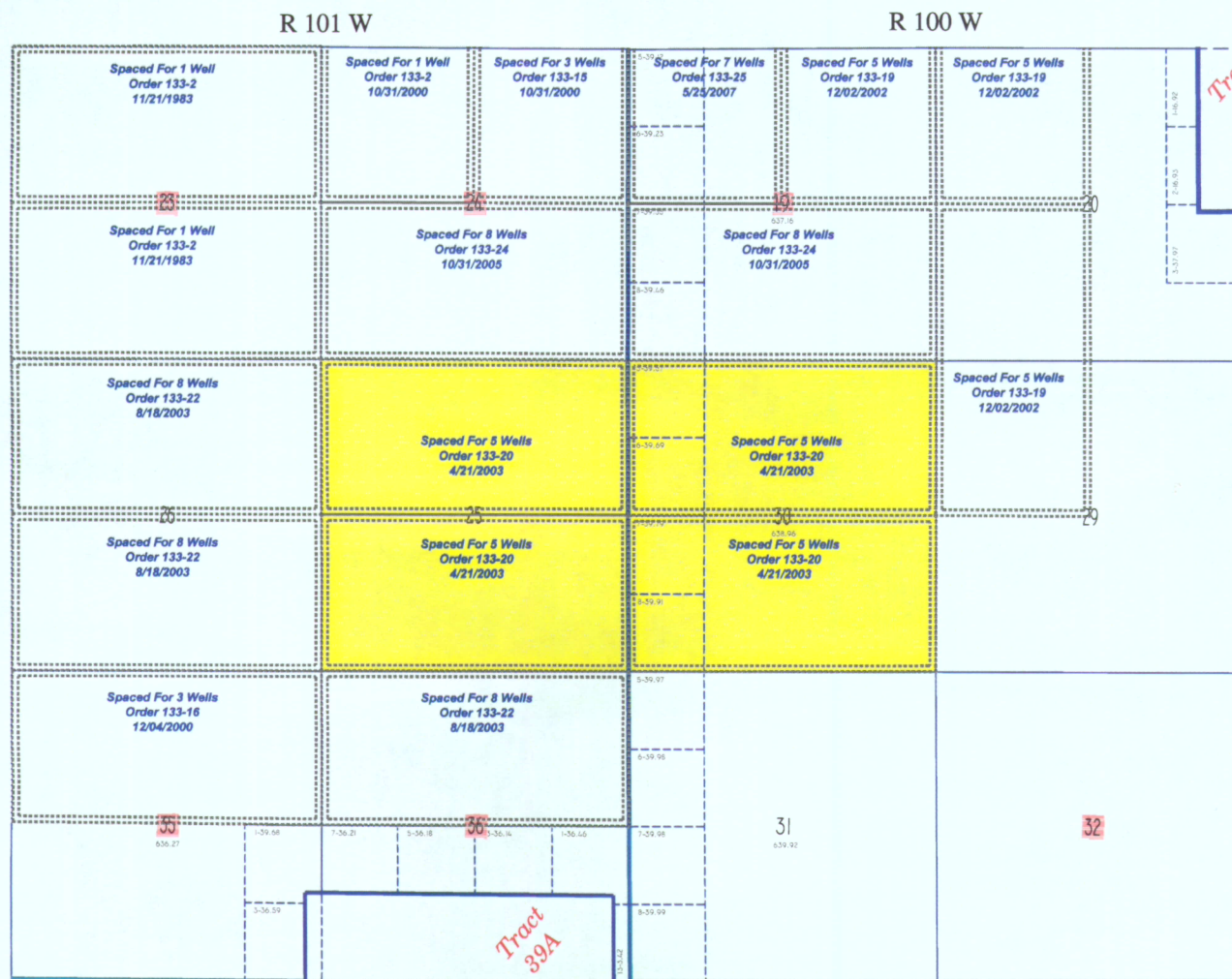
COGCC

#133-26

Legend:

 Affected Lands Spaced Area Boundary

ORIGINAL

T  
12  
NT  
12  
N

R 101 W

R 100 W

Exhibit No. \_\_\_\_\_  
Cause No. \_\_\_\_\_  
Docket No. \_\_\_\_\_

Wexpro Company

Spacing Order Land Map  
West Hiawatha Area  
Moffat County, Colorado

0 1000' 2000'

July 5, 2007



R 100 W

 Spaced Area Boundary

# Spacing Order Land Map

## West Hiawatha Area

Moffat County, Colorado

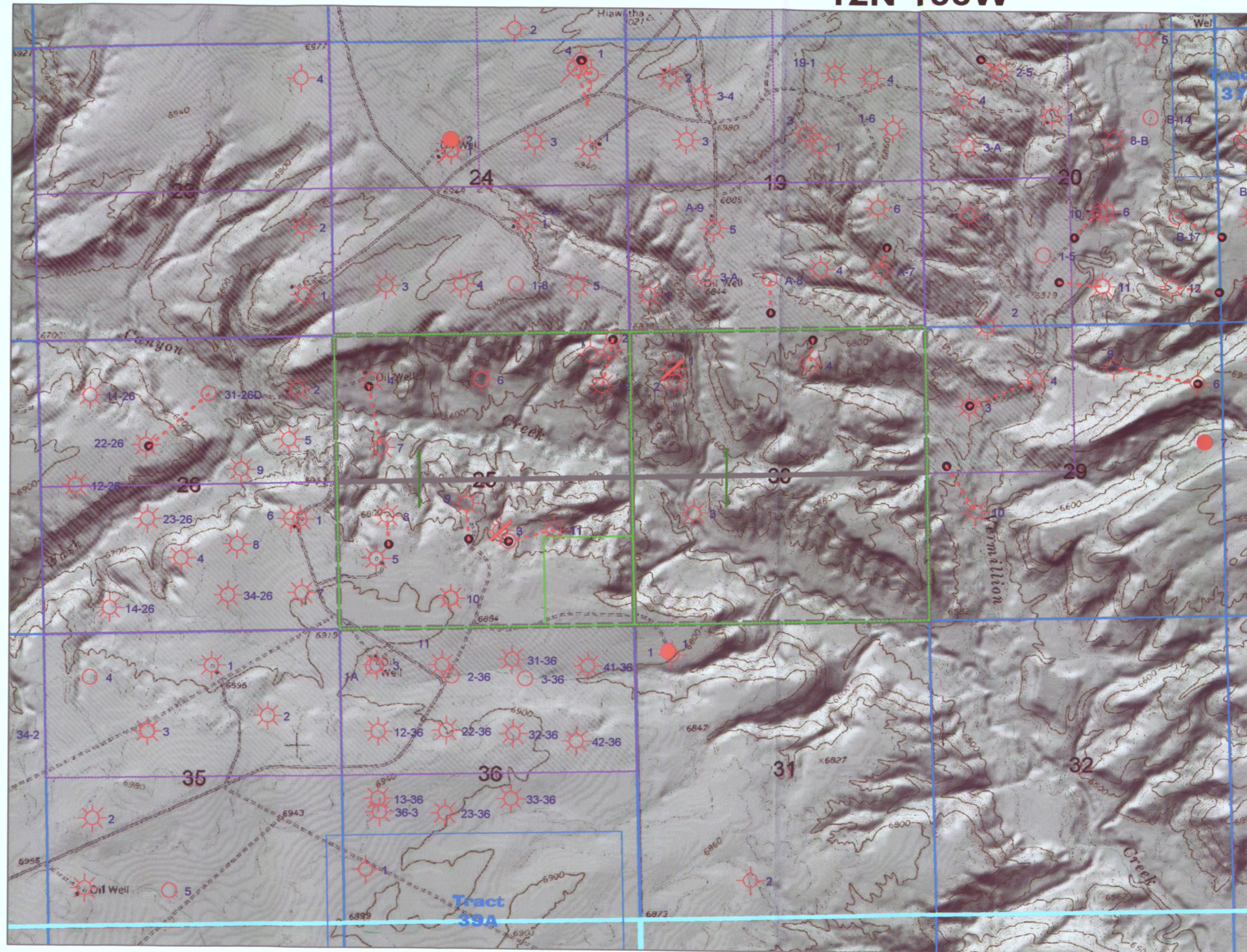


August 1, 2007



12N 101W

12N 100W



**Legend**



Application Lands  
Wexpro Acreage with  
Federal Lease Boundary



320 acre spaced unit



Gas Well



Oil Well



Dry Hole



Oil P&A



Gas P&A



Location



Surface Location

Exhibit No. L-3  
Cause No. 133  
Docket No. 0708-AW-21



**Wexpro Company**

**Topographic Land Map**

**West Hiawatha Field**

Moffat County, Colorado

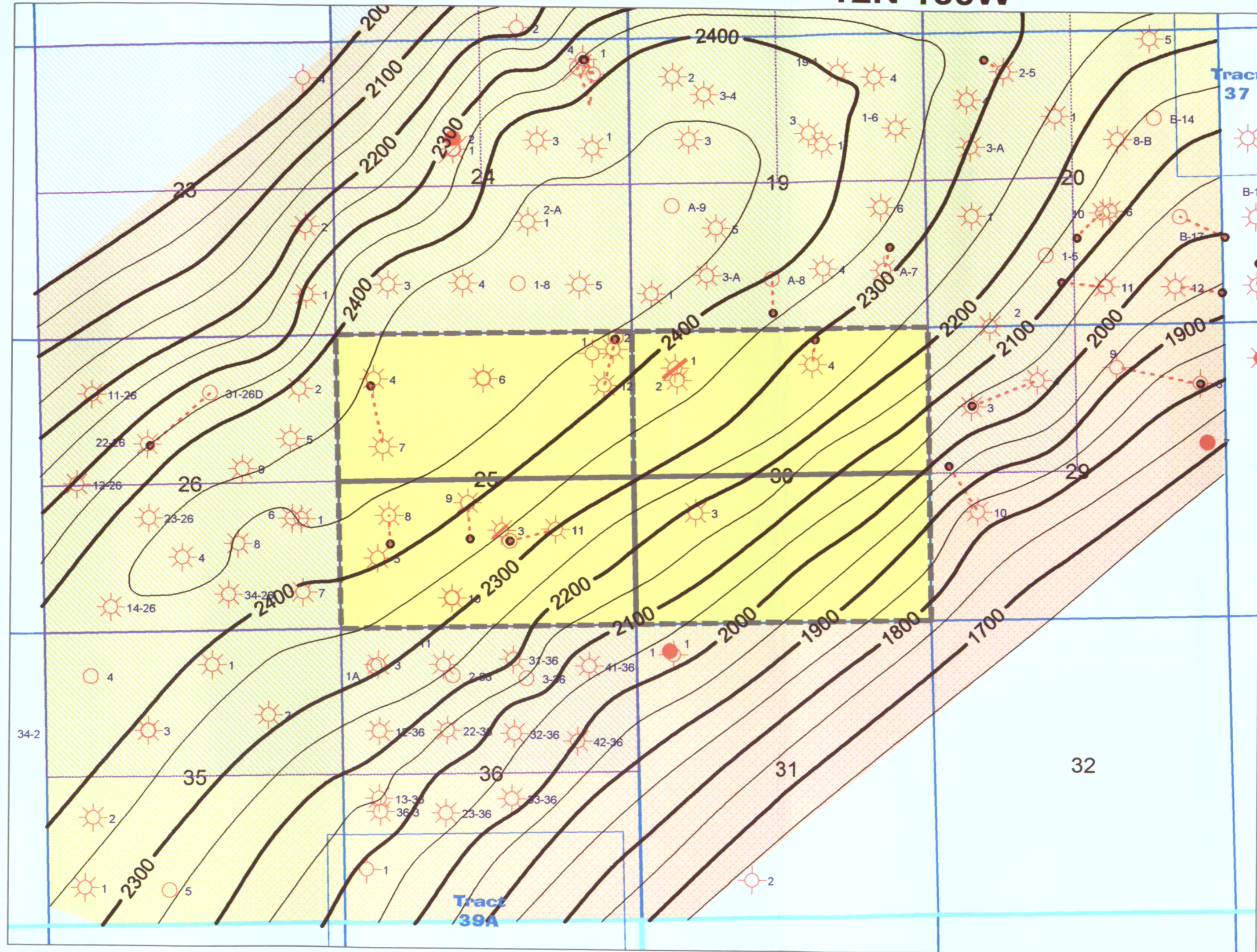
1000 0 1000 ft

August 1, 2007



12N 101W

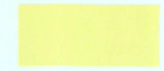
12N 100W



**Legend**



Application Lands



Wexpro Acreage



320 acre spaced unit



Gas Well



Oil Well



Dry Hole



Oil P&A



Gas P&A



Location



Surface Location

Exhibit No. G-3  
Cause No. 133  
Docket No. 0708-AW-21



**Wexpro Company**

**Lewis Marker Structure Map**

**West Hiawatha Field**

Moffat County, Colorado  
Contour Interval 50 Ft

1000 0 1000 ft

August 1, 2007



OPERATOR WELL	MTN FUEL LASHER #1 400' FNL, 700' FEL NE NE 25-12N-101W PLUGGED & ABANDON 6841 2755 8/24/1930	MTN FUEL LASHER #2 330' FNL, 330' FEL NE NE 25-12N-101W PRODUCING 6898 3416 10/1/1941 - 6/2/1973	MTN FUEL LASHER #3 2895' FEL, 1718' FSL NE SW 25-12N-101W PLUGGED & ABANDON 6819 4611 8/2/1948 - 12/31/1954	MTN FUEL LASHER #4 805 FNL 660 FWL 25-12N-101W PRODUCING 6661 4462 10/17/1965	MTN FUEL LASHER #5 1250 FSL 680 FWL 25-12N-101W PRODUCING 6895 4728 10/23/1965	WEXPRO LASHER #6 823' FNL, 2610' FWL SEC 25-12N-101W PRODUCING 6640 6234 9/2/2003	WEXPRO LASHER #7 962' FNL, 802' FWL SEC 25-12N-101W PRODUCING 6667 5396 12/28/2004	WEXPRO LASHER #8 900' FWL, 1500' FSL SEC 25-12N-101W PRODUCING 6906 5348 10/21/2004	WEXPRO LASHER #9 2323' FWL, 1575' FSL SEC 25-12N-101W PRODUCING 6833 5356 11/16/2004	WEXPRO LASHER #10 2000' FWL, 600' FSL 25-12N-101W PRODUCING 6921 5532 3/22/2006	WEXPRO LASHER #11 1400' FEL, 1800' FSL NE SE 25-12N-101W BHL PRODUCING 6824 5520 5/30/2006	WEXPRO LASHER #12 500' FEL, 900' FNL NE NE 25-12N-101W BHL PRODUCING 6866 5490 1/4/2007	MFS WHEELER #1 680' FNL, 760' FWL 30-12N-100W ABANDON 6843 3732 6/27/1933 - 4/4/47	MFS WHEELER #2 900' FNL, 800' FWL NW NW 30-12N-100W PRODUCING 6633 4530 6/28/1966	MFS WHEELER #3 1980' FSL, 1089' FWL NW SW 30-12N-100W PRODUCING 6564 4600 7/16/1971	MFS WHEELER #4 1998' FEL, 205' FNL NW NE SEC 30-12N-100W PRODUCING 6833 6655 11/6/2003
LOC STATUS KB TD COMP / RECOMP IP / DAY	5,310 MCF	993 MCF - 310 MCF	270 MCF - 768 MCF	2420 MCF	3910 MCF	1,890 MCF	1935 MCF (COMMINGLE) FORT UNION (LOWER) LEWIS (UPPER & LOWER) MESAVERDE	2600 MCF (COMMINGLE) FORT UNION (LOWER) LEWIS (UPPER & LOWER) MESAVERDE	1590 MCF (COMMINGLE) FORT UNION (LOWER) LEWIS (UPPER & LOWER) MESAVERDE	279 MCF	1635 MCF	965 MCF (COMMINGLE) FORT UNION LANCE LEWIS MESAVERDE	7,000 MCF - 946 MCF WASATCH	584 MCF UPPER FORT UNION LOWER FORT UNION LEWIS (UPPER & LOWER)	967 MCF UPPER & LOWER FORT UNION UPPER & LOWER LEWIS	2,000 MCF LOWER FORT UNION LEWIS MESAVERDE
PRODUCING FM	UPPER FORT UNION	UPPER FORT UNION	LOWER FORT UNION	LOWER FORT UNION LEWIS (UPPER & LOWER)	LOWER FORT UNION LEWIS (UPPER & LOWER)	LOWER FORT UNION LANCE LEWIS (UPPER & LOWER)				FORT UNION LEWIS MESAVERDE	LANCE FORT UNION LEWIS MESAVERDE	FORT UNION LANCE LEWIS MESAVERDE	WASATCH	UPPER FORT UNION LOWER FORT UNION LEWIS (UPPER & LOWER)	UPPER & LOWER FORT UNION UPPER & LOWER LEWIS	LOWER FORT UNION LEWIS MESAVERDE
WASATCH W-2 SD																
WASATCH W-1 SD																
UPPER FORT UNION 0 SD																
UPPER FORT UNION 1 SD																
UPPER FORT UNION 2 SD																
UPPER FORT UNION 2A SD																
UPPER FORT UNION 2B SD																
UPPER FORT UNION 3 SD																
UPPER FORT UNION 4 SD																
UPPER FORT UNION 5 SD																
UPPER FORT UNION 6 SD																
UPPER FORT UNION 6A SD																
UPPER FORT UNION 7 SD																
UPPER FORT UNION 8 SD																
UPPER FORT UNION 8A SD																
UPPER FORT UNION 9 SD																
UPPER FORT UNION 10 SD																
UPPER FORT UNION 11 SD																
UPPER FORT UNION 12 SD																
LOWER FORT UNION 1 SD																
LOWER FORT UNION 2 SD																
LOWER FORT UNION 3 SD																
LOWER FORT UNION 4 SD																
LOWER FORT UNION 5 SD																
LOWER FORT UNION 6 SD																
LOWER FORT UNION 7 SD																
LANCE																
FOX HILLS																
LEWIS 1 SD																
LEWIS 2 SD																
MESAVERDE																

LEGEND	PRODUCING (*)
	ZONE PRESENT BUT NOT COMPLETED
	NOT PRESENT
	NOT PENETRATED

Note: Does not indicate porosity permeability or thickness.

Exhibit No. G-5  
Cause No. 133  
Docket No. 0708-AW-21


Wexpro Company

Table of Producing Zone Status  
West Hiawatha Area  
Moffat County, Colorado

August 1, 2007



# Pay Horizon Sources

	Section 25												Section 30			
	Lasher 1	Lasher 2	Lasher 3	Lasher 4	Lasher 5	Lasher 6	Lasher 7	Lasher 8	Lasher 9	Lasher 10	Lasher 11	Lasher 12	Wheeler 1	Wheeler 2	Wheeler 3	Wheeler 4
Wasatch 01						np							17			
Upr Fort Union 00	25					np							30			np
Upr Fort Union 01					np	np					np					np
Upr Fort Union 02B	nde			np	np	np					np	np	np	np		np
Upr Fort Union 03	nde			np	np	np			np	np	np	np	np	np		np
Upr Fort Union 04	nde			np					np	np	np	np	np	np		np
Upr Fort Union 05	nde	14	np	np		np	np	np	np	np	np	np	np	np		np
Upr Fort Union 06	nde	np	np	np	np	np	np		np		np	np		np		
Upr Fort Union 06A	nde	np	np	np		np	np	np	np	np	np	np		48	np	
Upr Fort Union 07	nde	26					np				np		np	np	np	np
Upr Fort Union 08	nde	np	np		np	np		np			np		np	np	np	np
Upr Fort Union 08A	nde		np		np	np	np	np	np	np	np	np	np	np		np
Upr Fort Union 09	nde	nde		np	np	np	np		np					39	np	
Upr Fort Union 10	nde	nde			np			np		np	np		60	43		
Upr Fort Union 11	nde	nde				np		np				np	36	40	np	
Upr Fort Union 12	nde	nde		np	np	np	np	np							np	
Stagnant Lake	nde	nde														
Lwr Fort Union 01	nde	nde	np	np	np	np	np	np	np	np	np	np	nde		np	10
Lwr Fort Union 02	nde	nde	65	60	60	44	50	40	14	30	34	32	nde	30	35	8
Lwr Fort Union 03	nde	nde		22		4	9	19		32	40	13	nde			6
Lwr Fort Union 04	nde	nde			38	14	np	np	np		np		nde		np	12
Lwr Fort Union 05	nde	nde	np	39		18	29	28	8	np	np	np	nde			
Lwr Fort Union 06	nde	nde		np		10	32	np		np	10		nde		46	
Lance	nde	nde	np	np	np	9	np	np	np	np	10	np	nde			
Fox Hills	nde	nde	np	np	np		np	np	np	np		np	nde			
Upr Lewis	nde	nde	54	58	50	58	58	54	52	32	54	50	nde	49	51	58
Lwr Lewis	nde	nde		56	44	26	48	32	22	48	33	52	nde	44	28	24
Mesaverde	nde	nde	nde	nde	nde	28	31	20	14	50	42	36	nde	nde	nde	35
Net Pay	25	40	119	235	192	211	257	193	110	192	223	183	143	293	160	153
EUR, MMcf	1,143	5,406	515	6,157	6,160	1,527	2,389	1,543	1,716	645	1,917	988	3,153	7,638	5,166	2,686
Acres	167	550	8	56	68	19	20	17	29	6	23	31	47	58	61	53

## Abrevatic Pattern Key

V S	10	Zone present with 10 feet of pay completed
Upr		Zone present but not completed
Lwr	nde	Well not drilled deep enough to yield data
	np	Sand zone not present

Exhibit No. E-2  
Cause No. 133  
Docket No. 0708-AW-21



**Wexpro Company**

**Pay Horizon Sources**  
**West Hiawatha Area**  
Moffat County, Colorado

August 1, 2007