

TIPPING
34-5

34

BOSELY SG
342-34

BOSELY SG
442-34

BOSELY SG
542-34

REPPA
A11-34B

REPPA
A10-34D

CO Rd 306

COLOHAN
34-12

ncana Pipeline 8"

REPPA B
14-34 B

COLOHAN
34-13

COLOHAN
3-4

PRATHER-LATHAM
3-21A

PRATHER-LATHAM
3-31A

PRATHER-LATHAM
3-21B

MANESS
3-31B

3B

MANESS
3-21C

MANESS
3-31C

MANESS
3-21D

MANESS
3-31D

NOBLE ENERGY INC

Noble Leasehold
Proposed Spacing

EXHIBIT L- 4

Cause No. 139

Docket No. 0711-SP-32

October 23, 2007

Ecana Pipeline 20"

3



NOBLE ENERGY INC.

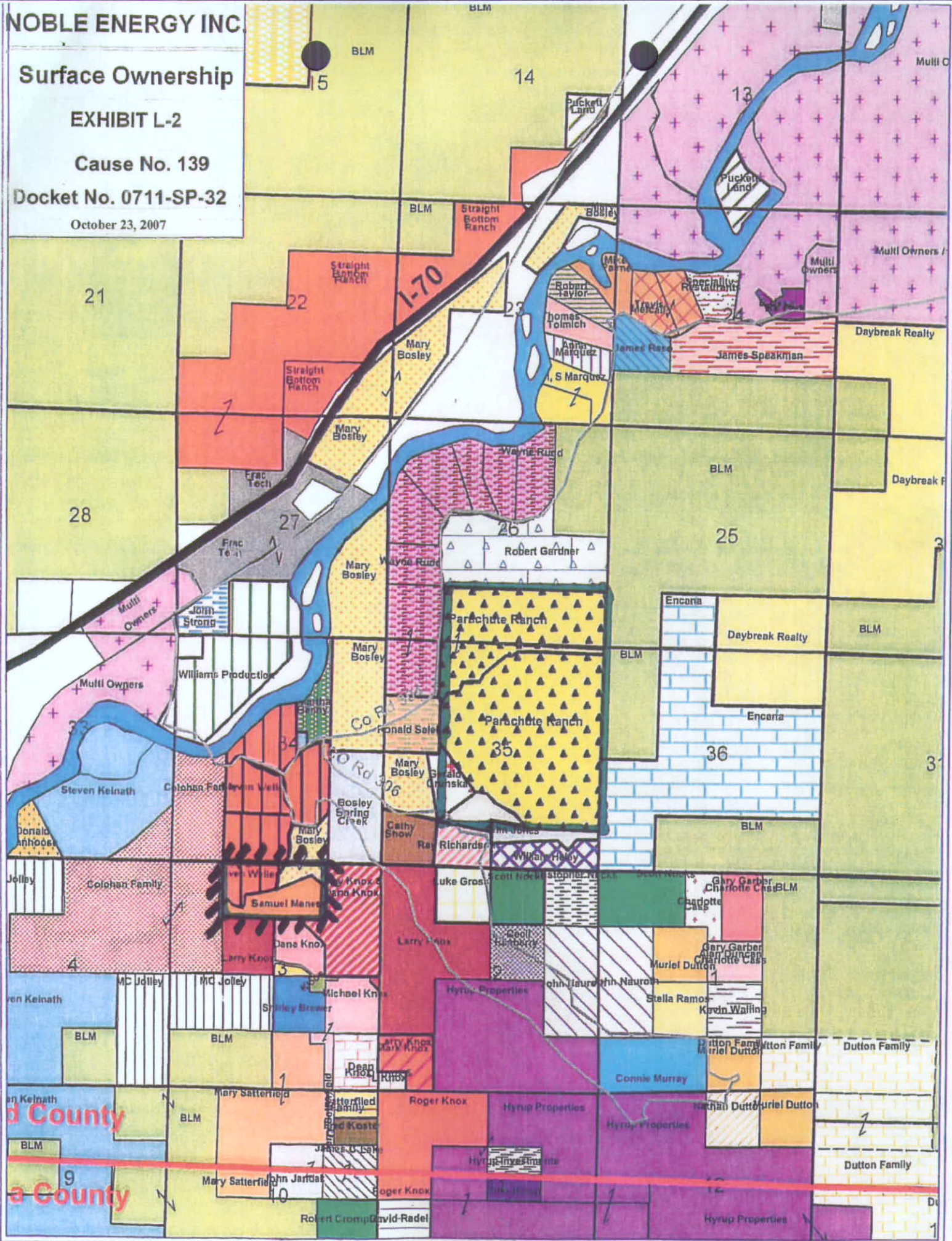
Surface Ownership

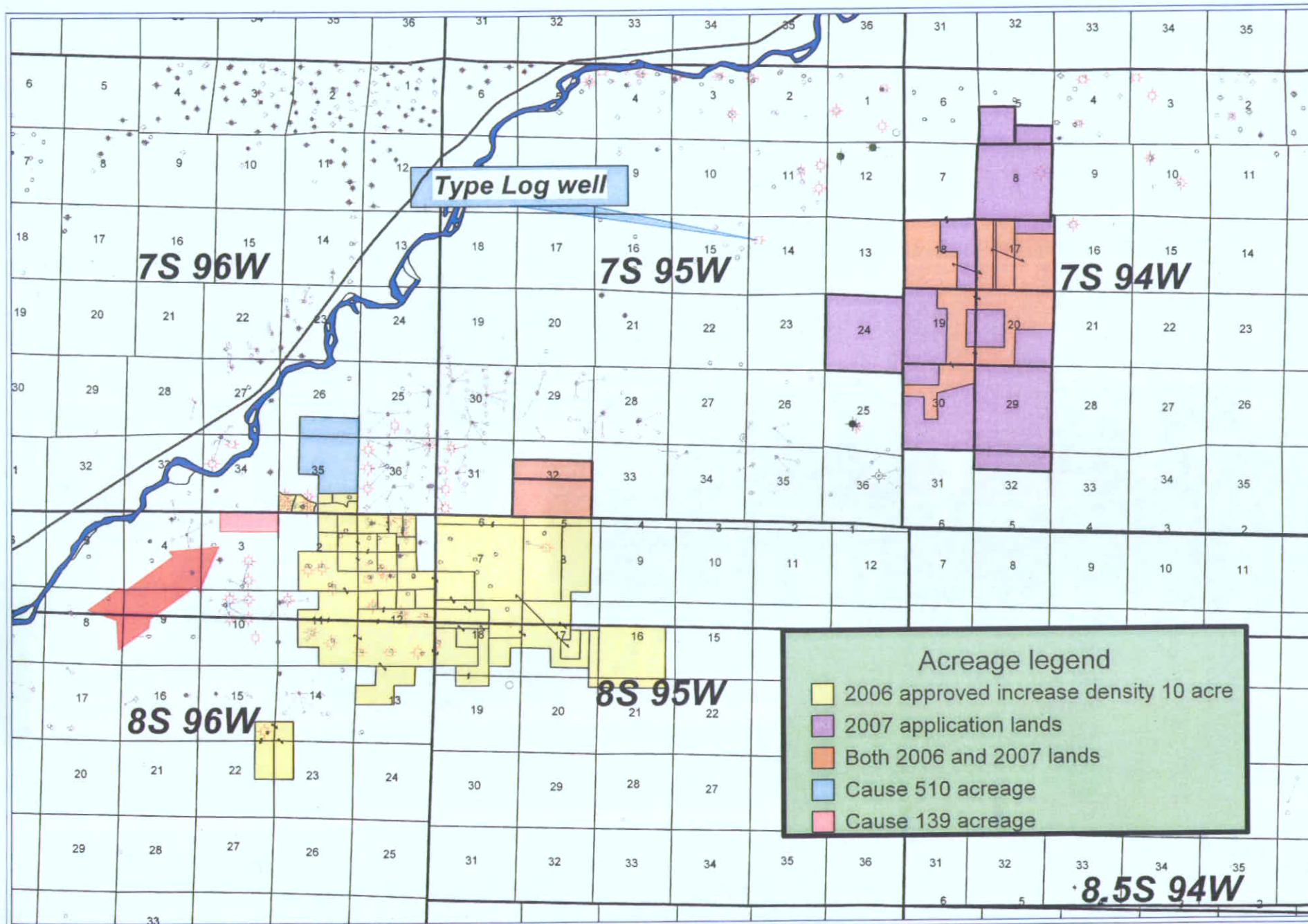
EXHIBIT L-2

Cause No. 139

Docket No. 0711-SP-32

October 23, 2007





Docket No. 0711-SP-32

Noble Energy Co.

Cause 139 2007 infill application

Area map with Noble acreage



WELL SYMBOLS

- GAS
- Dry Hole
- OIL
- Oil & Gas Well
- PLUGGED & ABANDONED
- SHUT IN

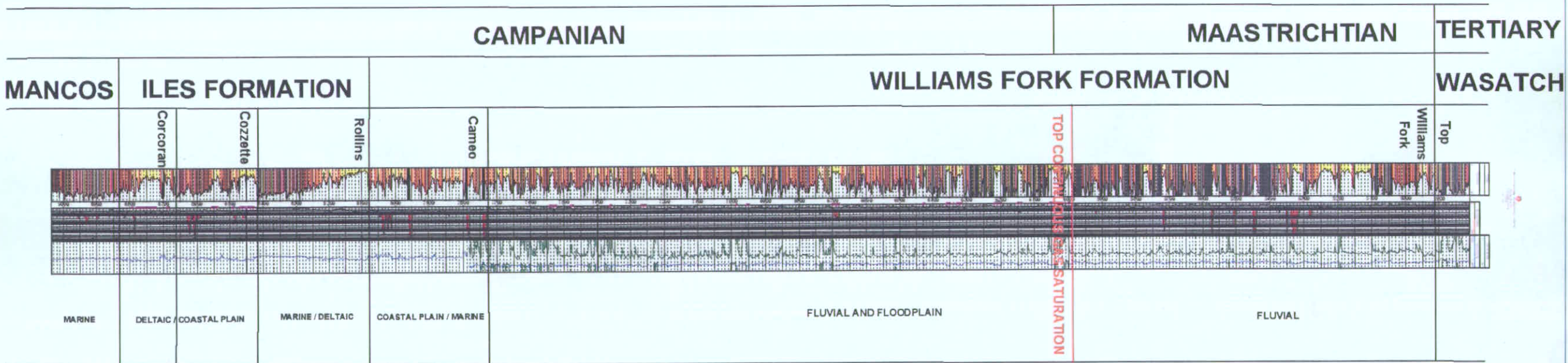
REMARKS

Large symbol wells are wells used in study.
Smaller symbol gray wells are all other wells in area

By: JRV

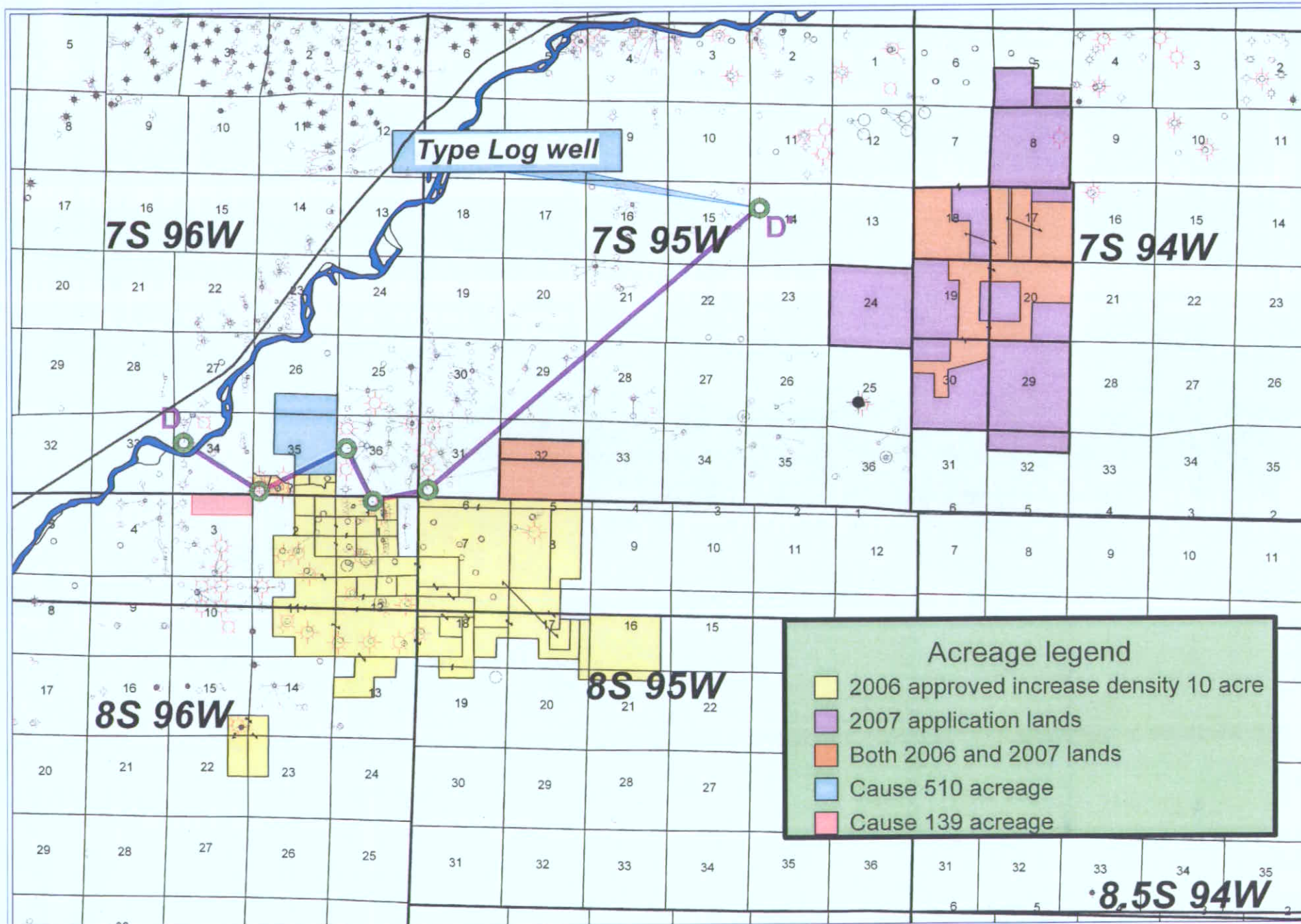
October 23, 2007

B-1



Docket No. 0711-SP-32

B-2



Docket No. 0711-SP-32

Noble Energy Co.

Cause 139 2007 infill application

Well log cross-section location map



ATTRIBUTE MAP



■ Cause 139 xsect wells

WELL SYMBOLS

- ★ GAS
- ⊕ Dry Hole
- OIL
- Oil & Gas Well
- ⊗ PLUGGED & ABANDONED
- SHUT IN

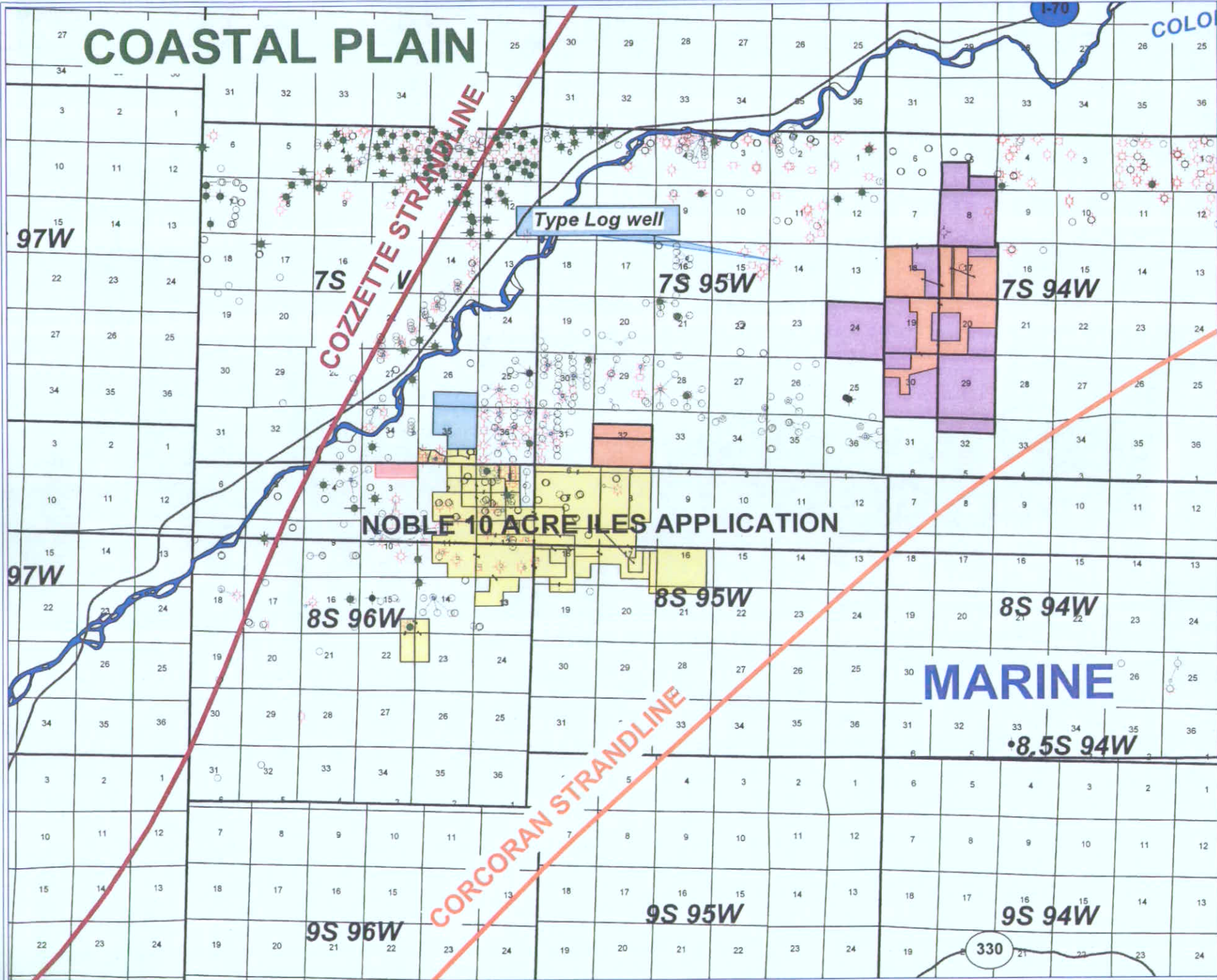
REMARKS

D-D' wells in green attribute.
Large symbol wells used in study.
Smaller symbol gray wells are all other wells in area.

By: JRV

October 23, 2007

B-4



Docket No. 0711-SP-32

Noble Energy Co.

Cause 139 infill application

Area map with Noble acreage

Strandline orientation



- WELL SYMBOLS
- GAS
 - Dry Hole
 - OIL
 - Oil & Gas Well
 - PLUGGED & ABANDONED
 - SHUT IN

By: JRV

October 23, 2007

B-3

D

ENCANA OIL & GAS (USA) INCORPORATED
TIPPING 34-S
T7S R96W 534
NW
5/19/2005

NOBLE ENERGY INC
4613122
T7S R96W 535
SESW

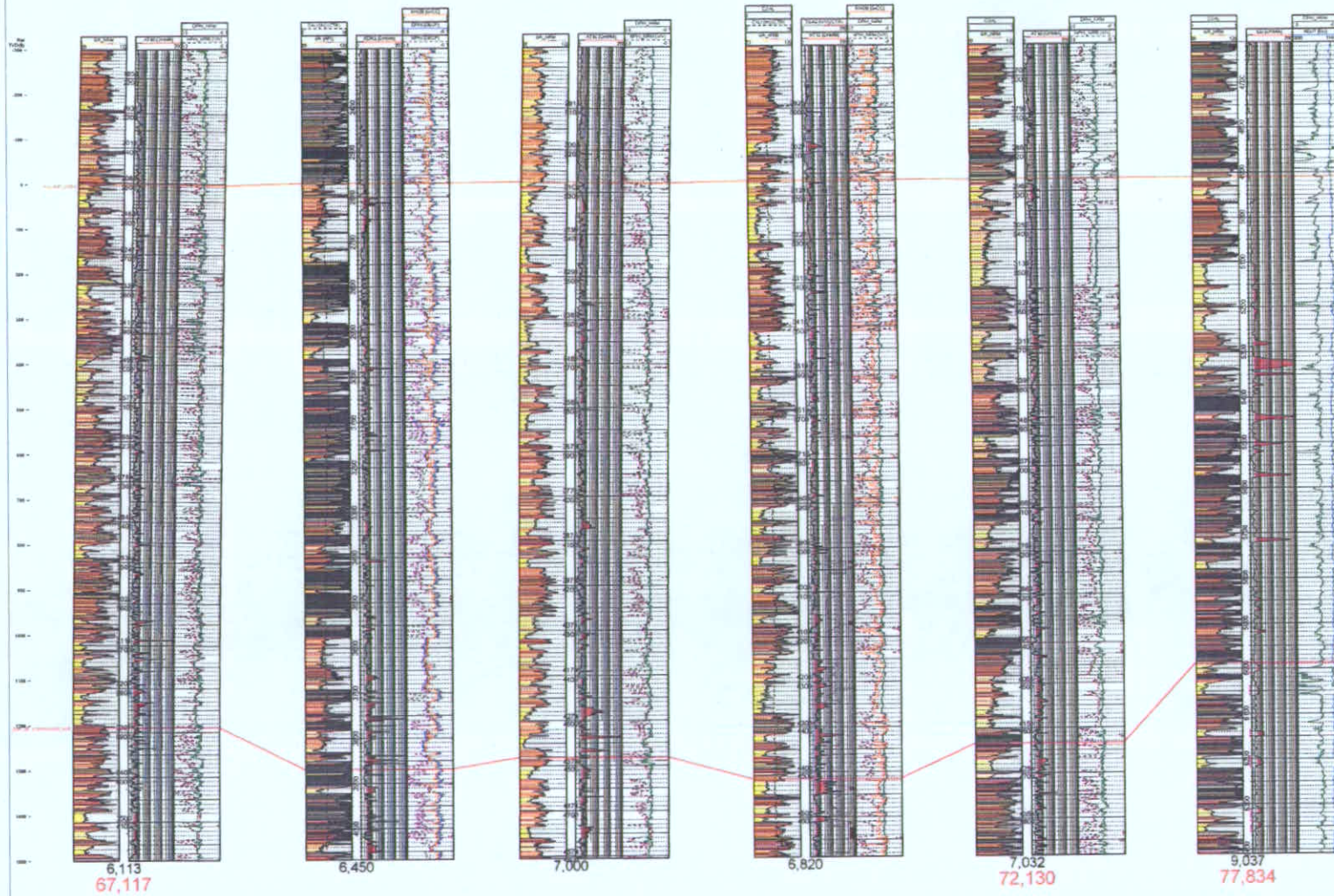
ENCANA O&G (USA) INC
TBI FEDERAL 36-S
T7S R96W 536
SESW
2/24/2005

NOBLE ENERGY INC
CASS-GARBER 1-31A
T8S R96W 51
SW NW NE
3/31/2005

ENCANA OIL & GAS (USA) INCORPORATED
TBI FEDERAL 31-13
T7S R96W 536
SE
3/31/2005

PIONEER NATURAL RESOURCES USA INC
FEDERAL 95
T7S R96W 514
SW NW
5/1/1961

D'



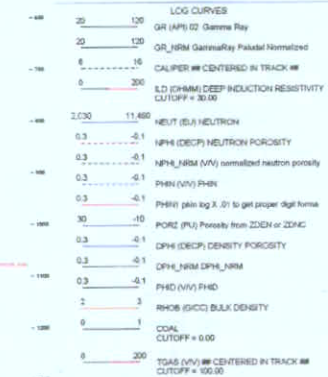
Docket No. 0711-SP-32

Noble Energy

Cause 139 2007 Infill application

Upper Williams Fork gas sands

D-D' cross section



TOPS AND MARKERS

WILLIAMS_FORK

EST_TOP_OF_CONTINUOUS_GAS

Operator

Well Label

Twn-Rge-Sec

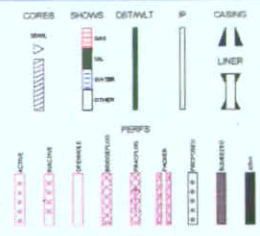
Spot Codes

WELL - SPUD_DATE

TEXT BELOW TRACKS

WELL - TD

WELL - CUMGAS



B-6