

#191-52



02084552

RECEIVED

MAY 30 2007

COGCC

PICEANCE BASIN - Piceance Basin Mamm Creek Area

**T6S R92W**

**Antero  
10-Acre Density  
Order No. 191-47**


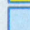
**Antero  
10-Acre Density  
Order No. 191-45 & 510-33**

**Antero Piceance Resources Corporation**

Piceance Basin  
Garfield County, CO

Exhibit: L1  
Cause No. 191  
Docket No.

**Antero Leasehold Within Application**

-  Full Interest
-  Partial Interest

**Antero  
10-Acre Density  
Order No. 510-16 & 191-25**

**Antero  
10-Acre Density  
Order No. 191-34**

**8**

0 654  
FEET





31

Antero  
Spacing/10-Acre Density  
Order Nos. 191-16 & 191-25

33

32

Antero  
Spacing/10-Acre Density  
Order Nos. 191-18 & 191-25

34

**T5S-R92W**

35

Antero Leasehold Within Application

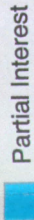


Exhibit: L1

Cause No. 191

Docket No. 0707-SP-19

Antero Resources Corporation

Piceance Basin

Garfield County, CO

32

**T6S-R93W T6S-R92W**

3

Antero  
Spacing/10-Acre Density  
Order Nos. 191-20 & 191-25

2

Antero  
Spacing/10-Acre Density  
Order Nos. 191-20 & 191-25

1

Antero  
10-Acre Density  
Order No. 191-48

6

Antero  
10-Acre Density  
Order No. 191-44

5

Antero  
10-Acre Density  
Order No. 191-47

Antero  
10-Acre Density  
Order Nos. 191-45 & 510-33

4

Antero  
10-Acre Density  
Order No. 191-42

2

3

10

Antero  
Spacing/10-Acre Density  
Order No. 191-39

11

Antero  
Spacing/10-Acre Density  
Order Nos. 191-15 & 191-25

12

Antero  
10-Acre Density  
Order No. 191-37

7

Antero  
10-Acre Density  
Order Nos. 510-16 & 191-25

8

Antero  
10-Acre Density  
Order No. 191-34

Antero  
10-Acre Density  
Order No. 191-36

9

Antero  
Spacing/10-Acre Density  
Order Nos. 523-2 & 191-25

10

Antero  
Spacing/10-Acre Density  
Order Nos. 523-2 & 191-25

11

Antero  
Spacing/10-Acre Density  
Order Nos. 191-14 & 191-25

14

13

Antero  
Spacing/10-Acre Density  
Order Nos. 191-13 & 191-25

18

Antero  
Spacing/10-Acre Density  
Order No. 191-40

Antero  
Spacing/10-Acre Density  
Order Nos. 191-24 & 191-25

17

Antero  
Spacing/10-Acre Density  
Order Nos. 191-24 & 191-25

18

Antero  
10-Acre Density  
Order No. 191-34

Antero  
10-Acre Density  
Order Nos. 191-17 & 191-25

15

Antero  
Spacing/10-Acre Density  
Order Nos. 523-2 & 191-25

Antero  
Spacing/10-Acre Density  
Order Nos. 523-2 & 191-25

15

14

Antero  
Spacing/10-Acre Density  
Order No. 191-24 & 191-25  
(N2SE SWSE 14)

14

Antero  
Spacing/10-Acre Density  
Order Nos. 191-41 & 191-25  
(Williams Fork, E/2 15; lles, NE 15)

22

23

Antero  
Spacing/10-Acre Density  
Order Nos. 191-19 & 191-25  
(Williams Fork, S/2 14; lles SW 14)

24

**BBC 10-Acre Density  
Orders 191-8 & 191-11**

Antero  
Spacing/10-Acre Density  
Order Nos. 191-27 & 191-25  
(SW, NWSE, SESE 16)

Antero  
Spacing/10-Acre Density  
Order No. 191-24 & 191-25

Antero  
Spacing/10-Acre Density  
Order No. 191-24

Antero  
10-Acre Density  
Order No. 191-34

**Silt Town Limits**

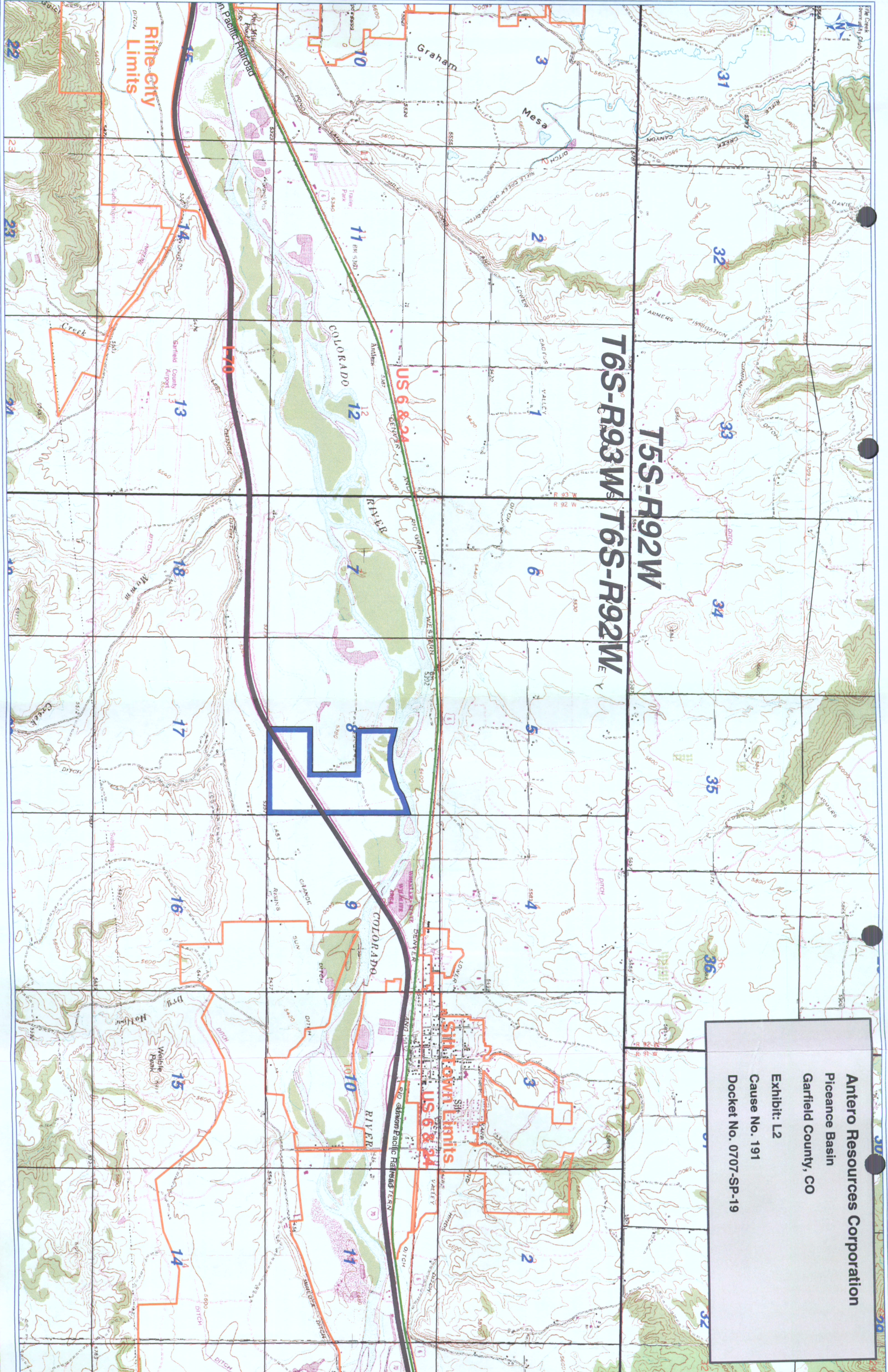
**US 6 & 24**

Union Pacific Railroad

**Rifle City  
Limits**



Antero Resources Corporation  
Piceance Basin  
Garfield County, CO  
Exhibit: L2  
Cause No. 191  
Docket No. 0707-SP-19



T5S-R92W  
T6S-R93W  
T6S-R92W

US 6 & 34

Silt Town Limits  
US 6 & 34

Rifle City  
Limits