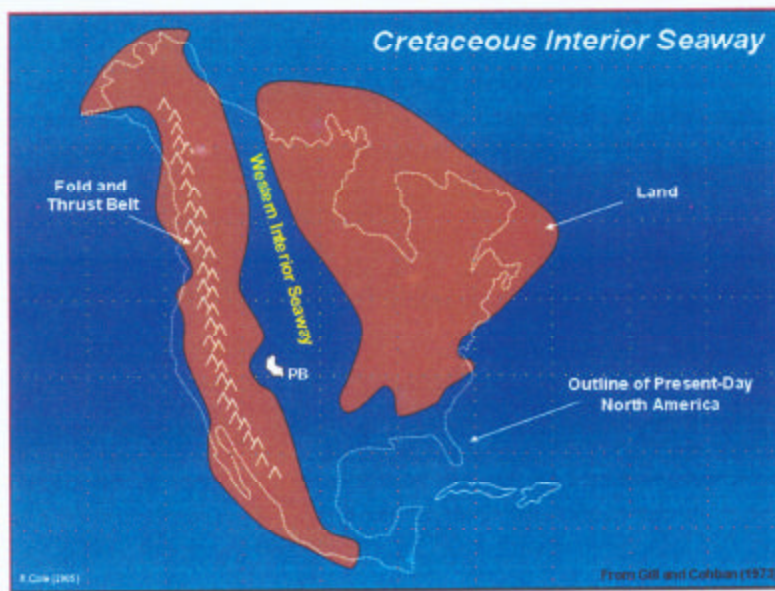


510-24



Piceance Basin Paleo-Geography

Chevron North America Exploration & Production
MidContinent Business Unit
Cretaceous Paleo-Geography

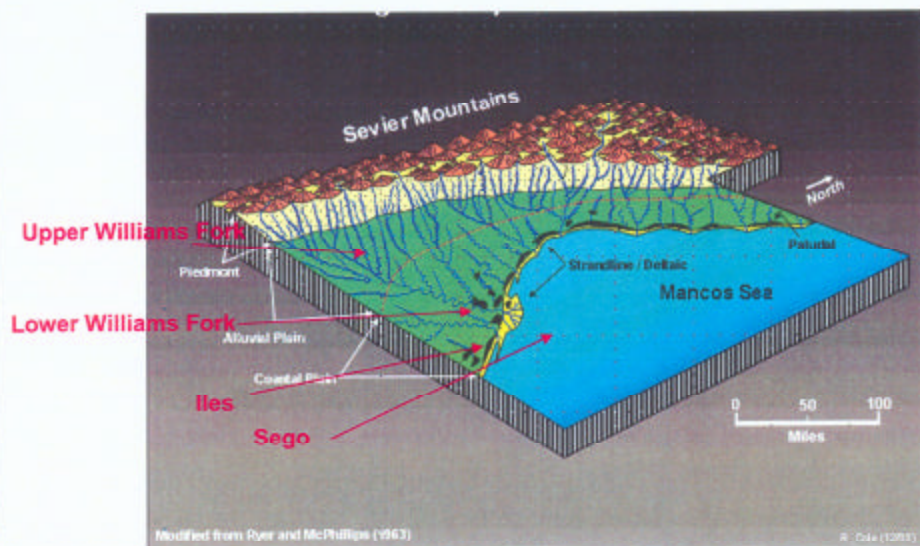
Skinner Ridge, Piceance Basin

Cause 510
Docket 0608-AW-14
Exhibit 3

Garfield County, Colorado
Administrative Hearing
August 2, 2006



Regional Depositional Model

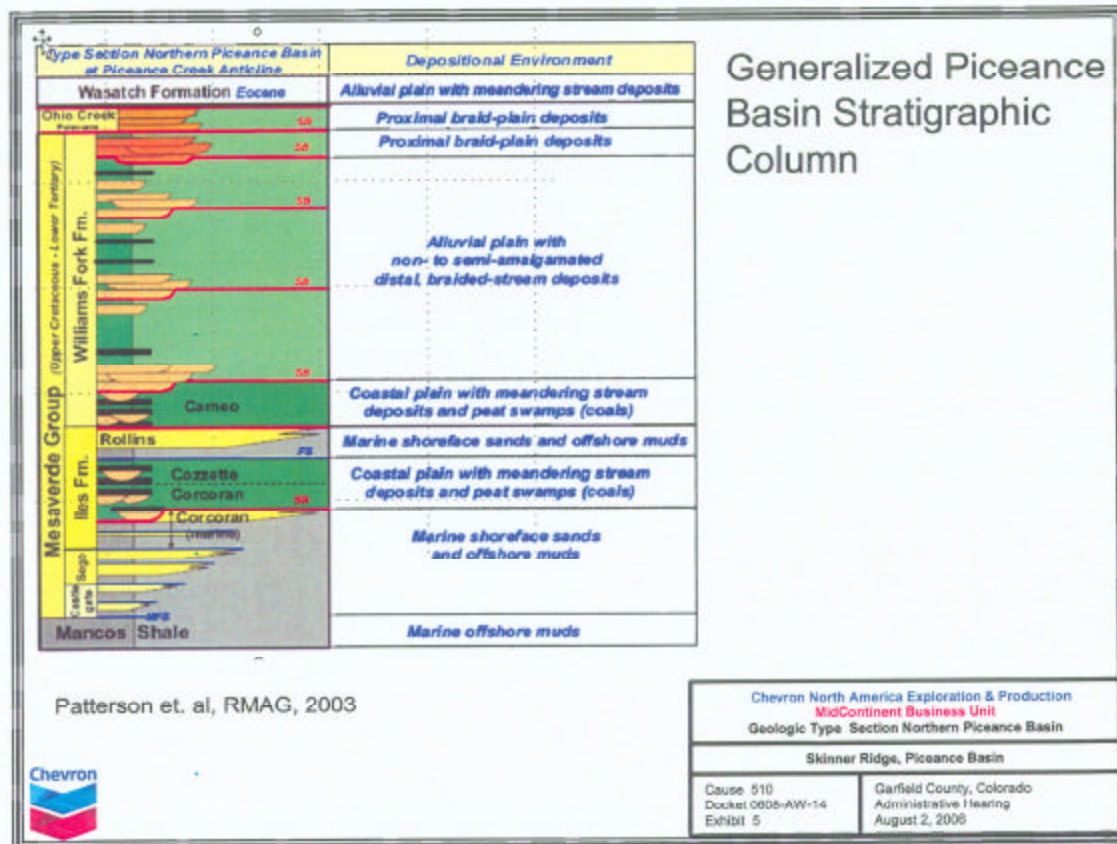


Chevron North America Exploration & Production
 MidContinent Business Unit
 Regional Depositional Model

Skinner Ridge, Piceance Basin

Cause 510
 Docket 0000-AW-14
 Exhibit 4

Garfield County, Colorado
 Administrative Hearing
 August 2, 2006



Williams Fork Sandbodies (Coal Canyon Outcrop)

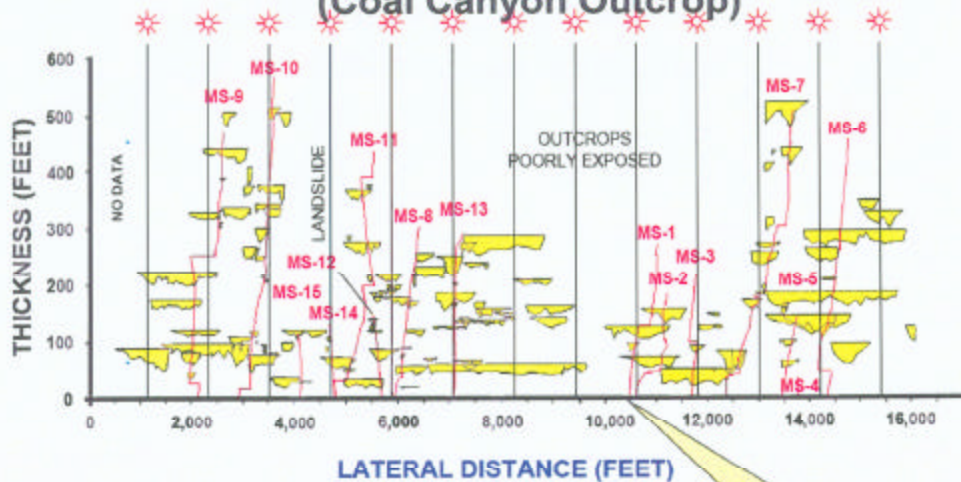


Figure modified from Cumella and Otsby, 2003)

Schematic showing sand thickness versus lateral continuity. Most of the sands are penetrated by one wellbore on 10-acre spacing. Two of the larger sand bodies >2000 ft are penetrated by 3 wellbores. Several of the smaller sandbodies are not penetrated by any of the wellbores.



Chevron North America Exploration & Production
MidContinent Business Unit
Williams Fork Sandbodies

Skinner Ridge, Piceance Basin

Cause 510
Docket 0608-AW-14
Exhibit 7

Garfield County, Colorado
Administrative Hearing
August 2, 2006

Williams Fork Sand Body Dimensions

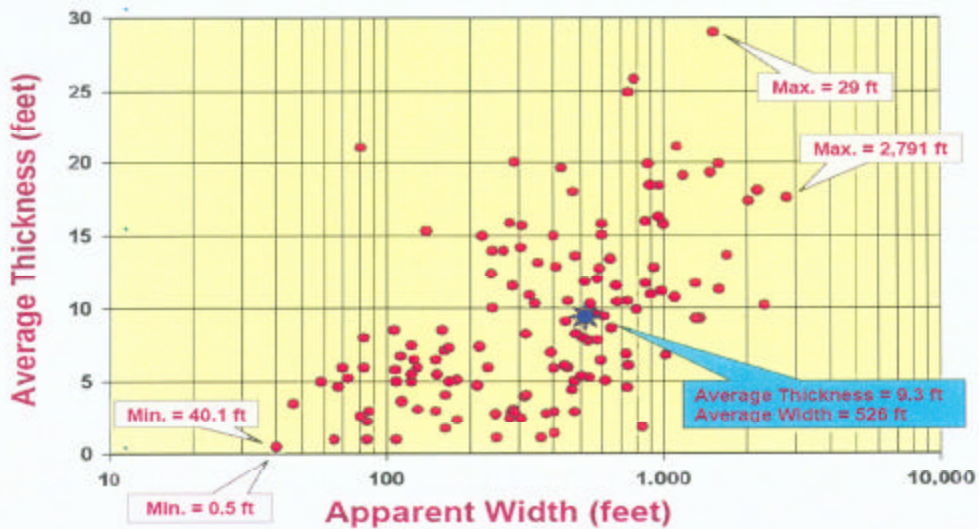


Figure from R. Cole, 2005

Average Williams Fork sand body is 526 feet. A ten acre spaced drilling pattern is needed to effectively penetrate the smaller sand bodies and efficiently drain the reservoir.



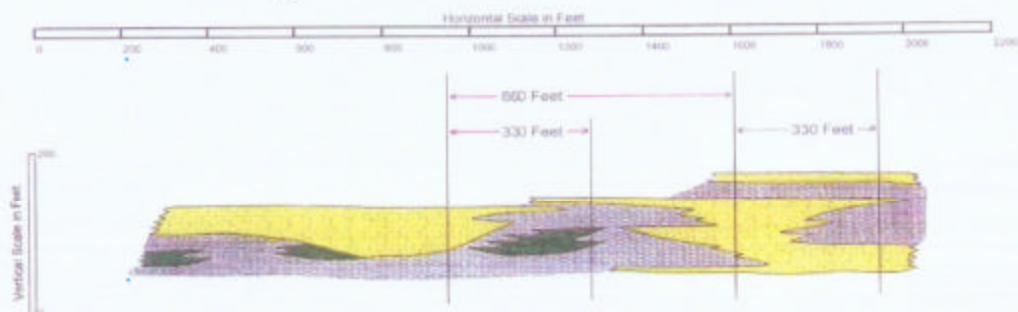
Chevron North America Exploration & Production
MidContinent Business Unit
Williams Fork Sand Body Dimensions

Skinner Ridge, Piceance Basin

Cause 510
Docket 0608-AW-14
Exhibit 8

Garfield County, Colorado
Administrative Hearing
August 2, 2006

Williams Fork Outcrop Schematic (Rifle Gap)



0 25 50 75 100
feet
0 25 50
m

KEY	
Lithology	Interpretation
Sandstone	fluvial channel / point bar
Shale	flood plain / levee

Figure from Lorenz, John, 1982,
Sedimentology of the Mesaverde
Formation at Rifle Gap, Colorado,
Sandia National Laboratories Report
(SAND 82-0604)

The diagram illustrates sand body heterogeneity and how wireline correlations from two wellbores 660 feet apart might suggest that these two sandbodies are connected.



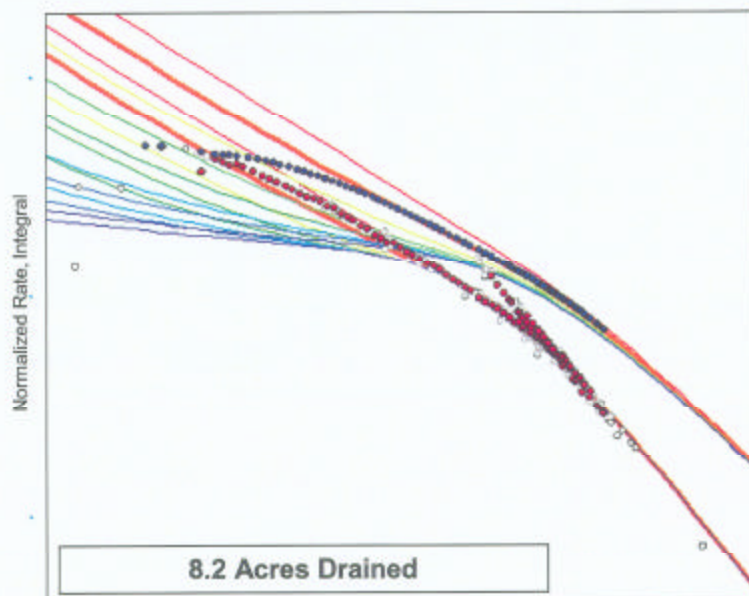
Chevron North America Exploration & Production
Midcontinent business unit
Williams Fork Outcrop Schematic

Skinner Ridge, Piceance Basin

Cause 510
Docket 0008-AW-14
Exhibit 10

Garfield County, Colorado
Administrative Hearing
August 2, 2006

Rate Transient Analysis Blasingame Type Curve Example



Material Balance Pseudo Time



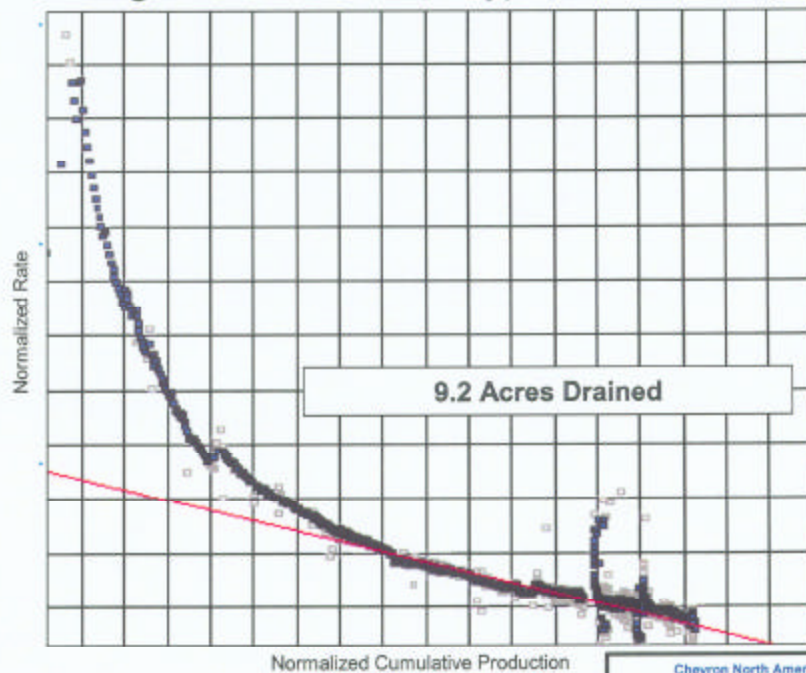
Chevron North America Exploration & Production
MidContinent Business Unit
RTA Example: Chevron GM 34-17

Skinner Ridge, Piceance Basin

Cause 510
Docket 0608-AW-14
Exhibit 12

Garfield County, Colorado
Administrative Hearing
August 2, 2008

Rate Transient Analysis Flowing Material Balance Type Curve Example



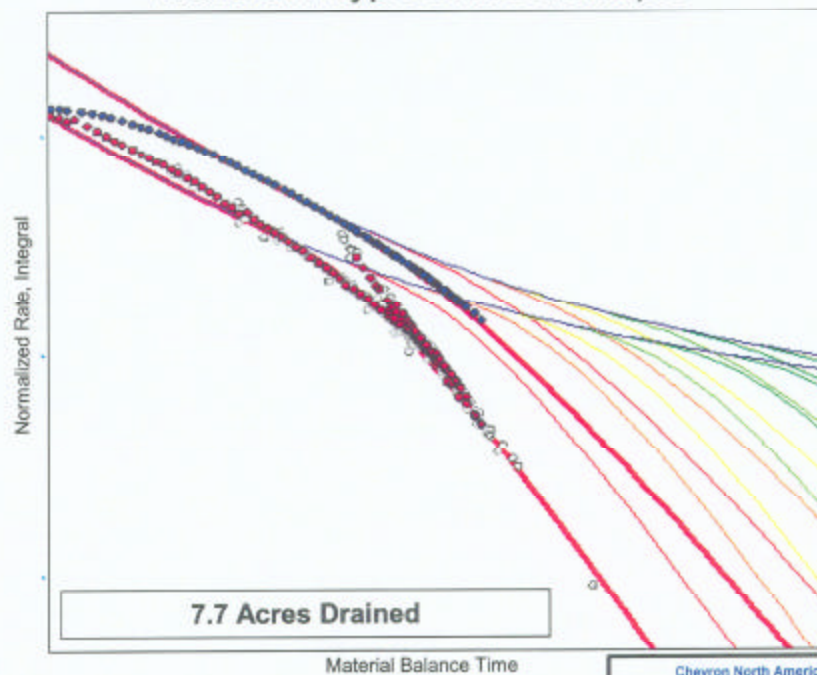
Chevron North America Exploration & Production
MidContinent Business Unit
RTA Example: Chevron GM 34-17

Skinner Ridge, Piceance Basin

Cause 510
Docket 0608-AW-14
Exhibit 13

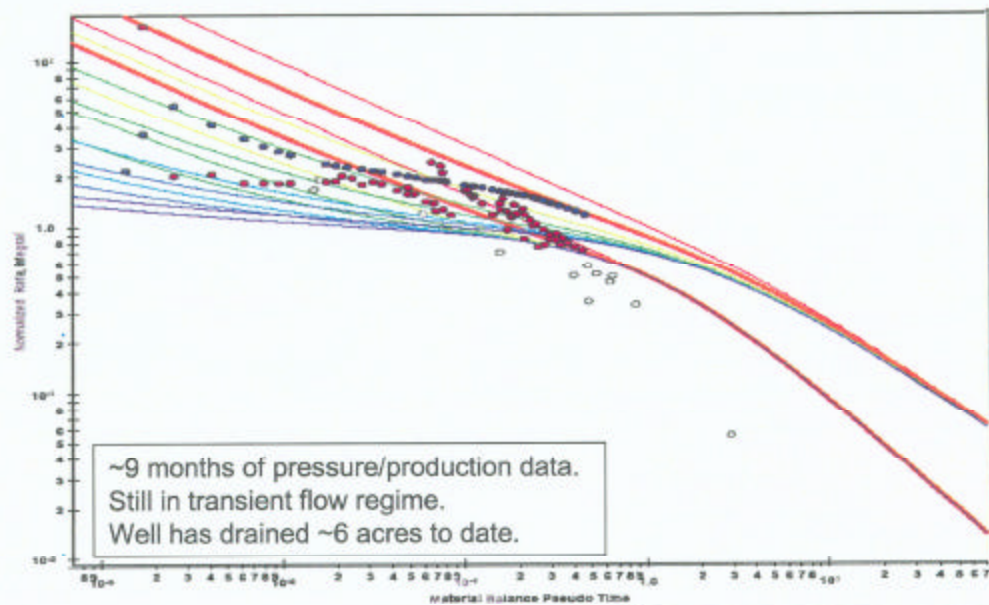
Garfield County, Colorado
Administrative Hearing
August 2, 2006

Rate Transient Analysis Transient Type Curve Example



Chevron North America Exploration & Production	
MidContinent Business Unit	
RTA Example: Chevron GM 34-17	
Skinner Ridge, Piceance Basin	
Cause 510	Garfield County, Colorado
Docket 0608-AW-14	Administrative Hearing
Exhibit 14	August 2, 2006

Chevron Skinner Ridge 598-25-1



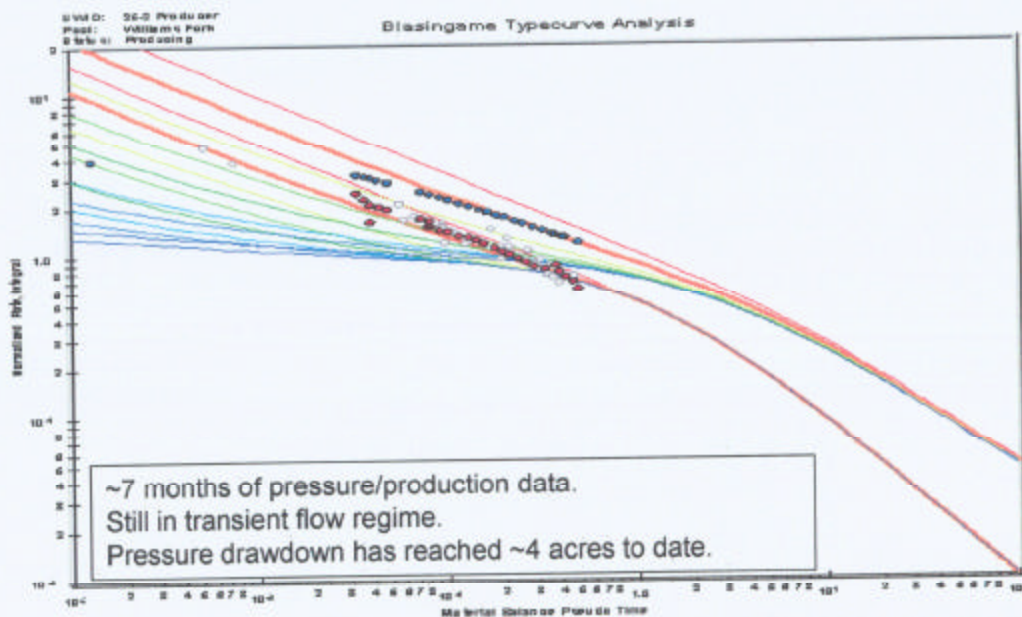
Chevron North America Exploration & Production
MidContinent Business Unit
Blasingame Type Curve

Skinner Ridge, Piceance Basin

Cause 510
Docket 0608-AW-14
Exhibit 16

Garfield County, Colorado
Administrative Hearing
August 2, 2006

Chevron Skinner Ridge 598-25-2



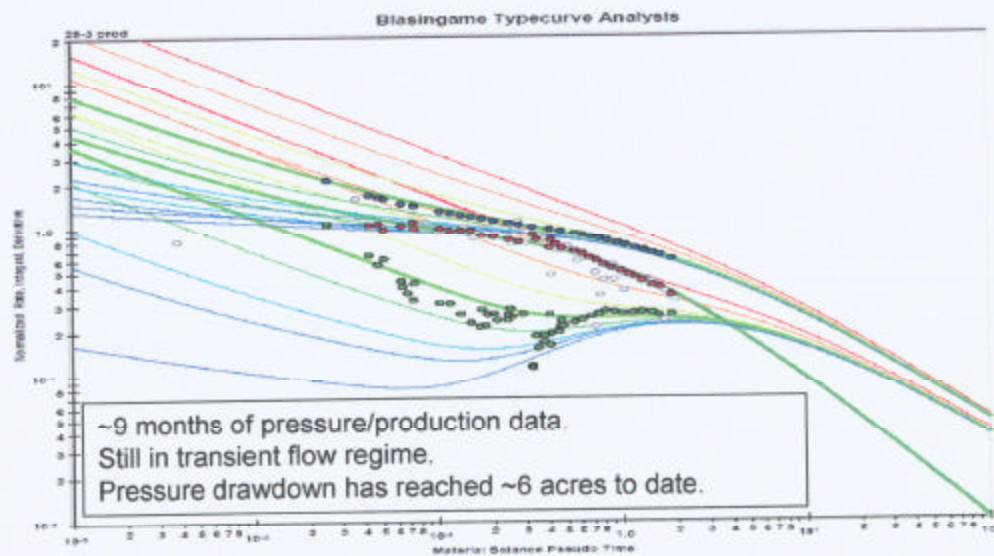
Chevron North America Exploration & Production
MidContinent Business Unit
Blasingame Type Curve

Skinner Ridge, Piceance Basin

Cause 510
Docket 0605-AW-14
Exhibit 17

Garfield County, Colorado
Administrative Hearing
August 2, 2006

Chevron Skinner Ridge 598-25-3



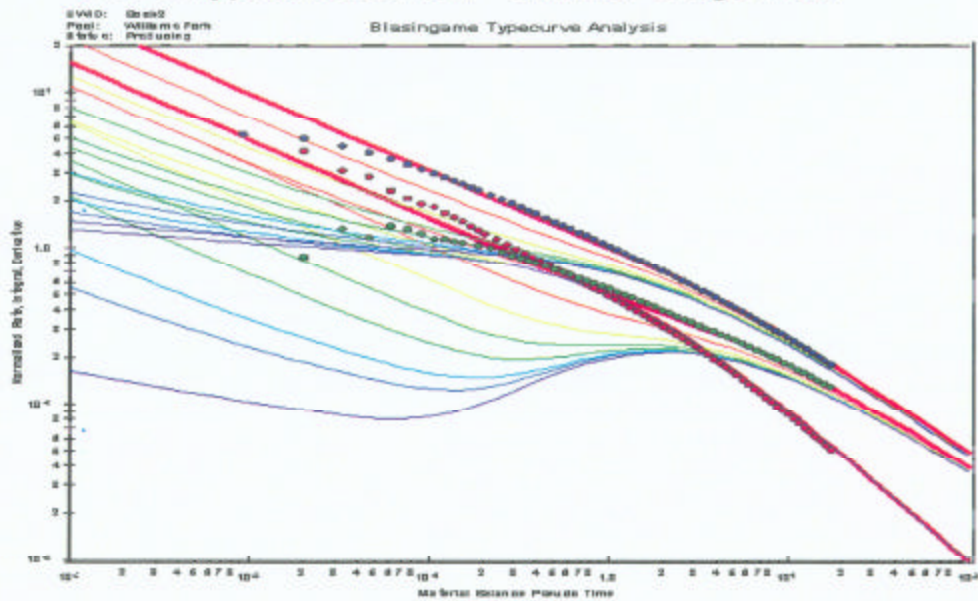
Chevron North America Exploration & Production
MidContinent Business Unit
Blasingame Type Curve

Skinner Ridge, Piceance Basin

Cause 510
Docket 0808-AW-14
Exhibit 18

Garfield County, Colorado
Administrative Hearing
August 2, 2006

Projected Blasingame Type Curve Match for a Typical Chevron – Skinner Ridge Well



**Expect ~9 acres total drainage
for life of the well**



Chevron North America Exploration & Production
MidContinent Business Unit
Blasingame Type Curve

Skinner Ridge, Piceance Basin

Cause 510
Docket 0606-AW-14
Exhibit 19

Garfield County, Colorado
Administrative Hearing
August 2, 2006