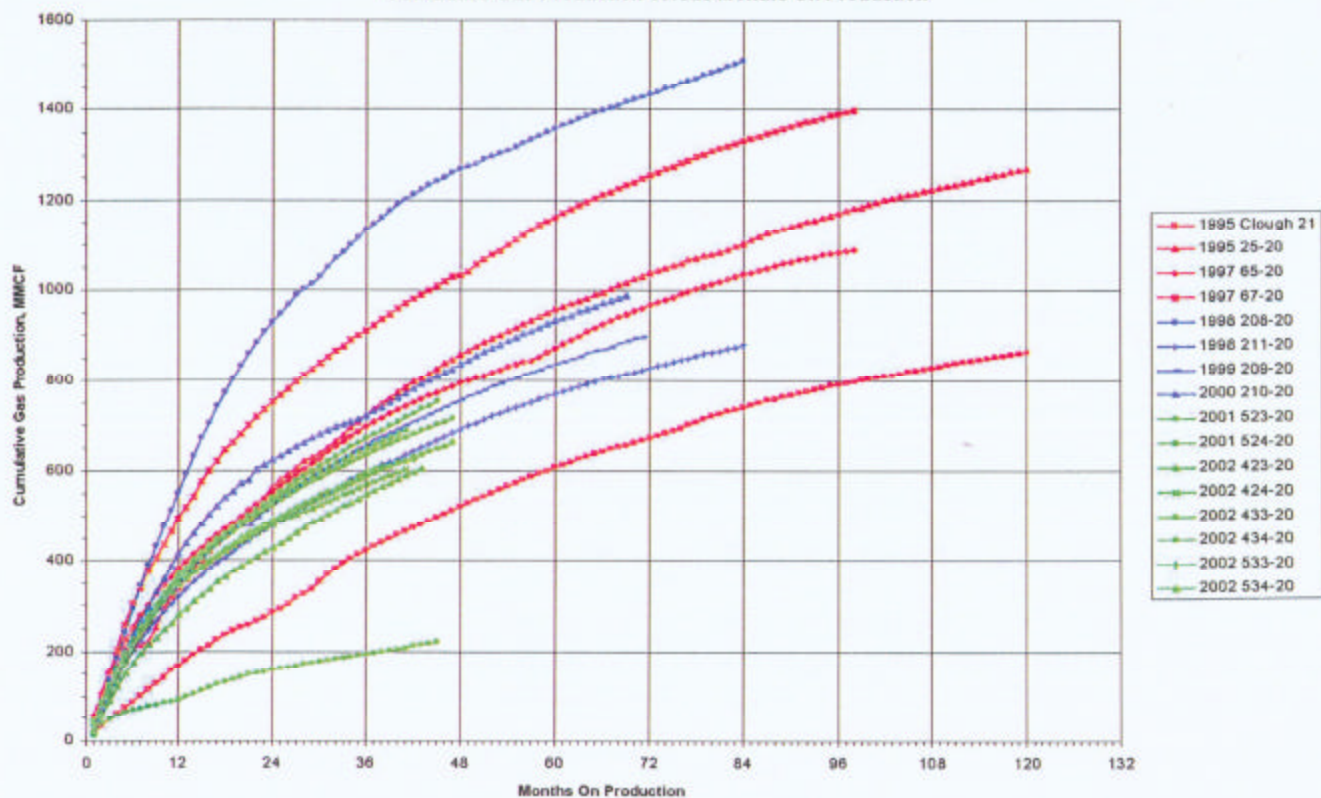


 Yellow

Docket No. 0610-AW-22

Rullison 10-Acre Pilot Area
S20-T6S-R94W
Cumulative Gas Production Versus Months On Production



Source: Antero Resources Corporation

Exhibit E-2

Cause 191

Docket No. 0602-SP -11

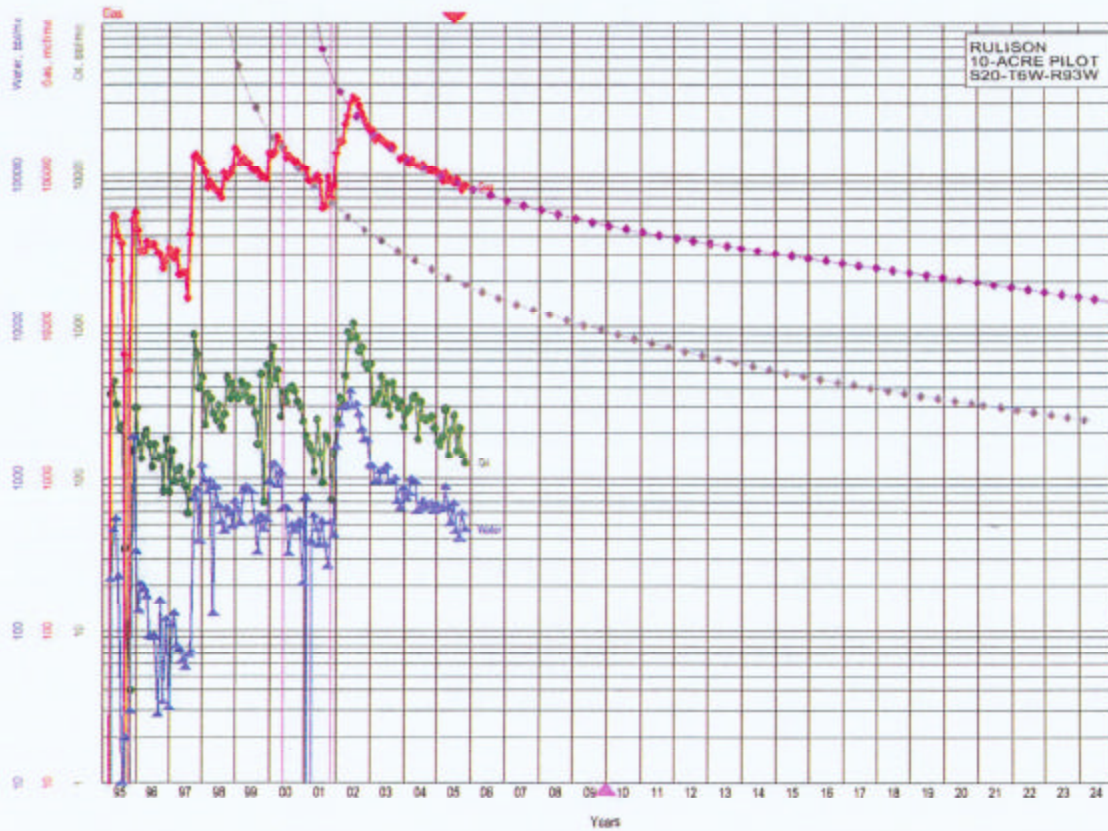


Whiting Oil and Gas Corporation

Exhibit E-3

Cause 528

Docket No. 0610-AW-22



Oil, bbl/mo	7/2005
Ref	36082
Cum	
Gas, mcf/mo	Gas - 36
Ref	7/2005
Cum	13476442
EUR	10304946
EUR	23761366
Yrs	44.585
Qref	89407.6
Qe	17.332537
Qmin	7.000
b	1.070326
Qab	2400.0
Gas, mcf/mo	Gas - 39
Ref	7/2005
Cum	13476442
EUR	1814222
EUR	15280664
Yrs	18.596
Qref	20499.4
Qe	19.201397
Qmin	7.000
b	0.600000
Qab	2400.0
Water, bbl/m	7/2005
Ref	94303
Cum	

Source: Antero Resources Corporation

Exhibit E-3

Cause 191

Docket No. 0602-SP -11

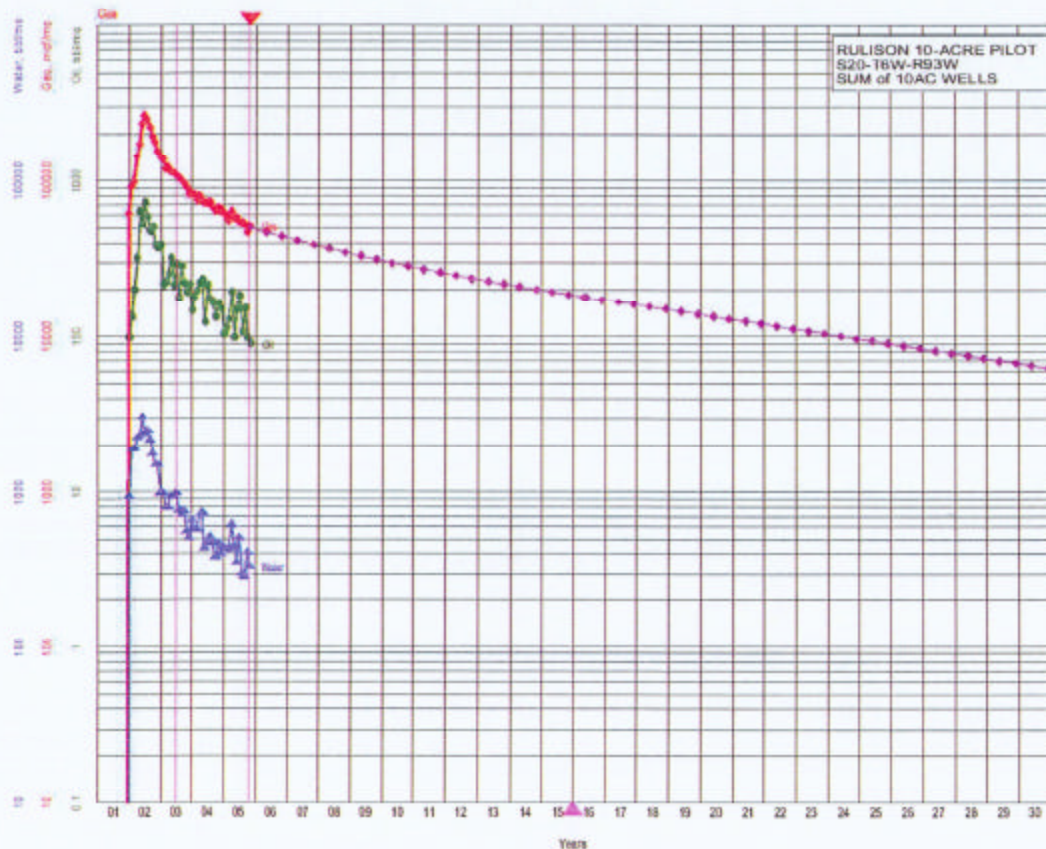


Whiting Oil and Gas Corporation

Exhibit E-4

Cause 528

Docket No. 0610-AW-22



Source: Antero Resources Corporation

Exhibit E-4

Cause 191

Docket No. 0602-SP -11

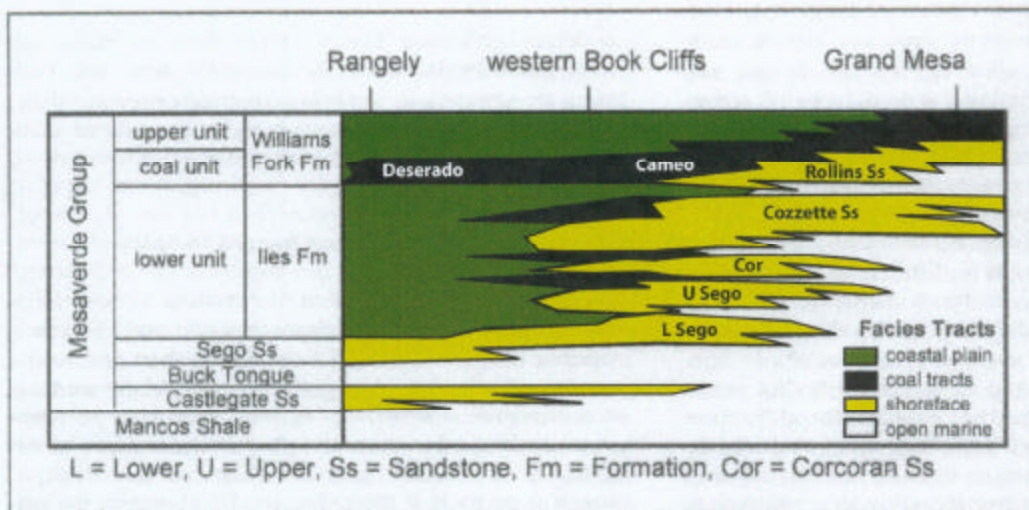


Whiting Oil and Gas Corporation

Exhibit E-5

Cause 528

Docket No. 0610-AW-22



Diagrammatic regional stratigraphic correlation chart for the Mesaverde Group, Piceance Basin.

Modified from Anderson, D.A., 2005, Architecture of crevasse splay and point-bar bodies of the nonmarine Iles Formation north of Rangely, Colorado: Implications for reservoir description, *Mountain Geologist*, 42:3 (July 2005), p 109-122.



Whiting Petroleum Corporation

EXHIBIT: G2

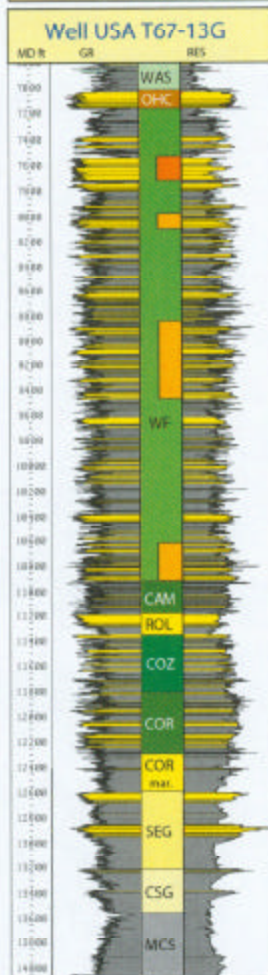
CAUSE NO. 528

DOCKET NO. 0610-AW-22

Northern Piceance Basin

Diagrammatic regional
strat column for the
Mesaverde Group

API: 051030843100
T2S R97W S13 SWSE



Type Section Northern Piceance Basin at Piceance Creek Anticline		Depositional Environment
Wasatch Formation	Eocene	Alluvial plain with meandering stream deposits
Ohio Creek	Paleocene	Proximal braid-plain deposits
		Proximal braid-plain deposits
Mesaverde Group (Upper Cretaceous - Lower Tertiary)	Williams Fork Fm.	Alluvial plain with non- to semi-amalgamated distal, braided-stream deposits
Mesaverde Group	Cameo	Coastal plain with meandering stream deposits and peat swamps (coals)
	Rollins	Marine shoreface sands and offshore muds
	Cozzette	Coastal plain with meandering stream deposits and peat swamps (coals)
	Corcoran	Coastal plain with meandering stream deposits and peat swamps (coals)
	Corcoran (marine)	Marine shoreface sands and offshore muds
Mesaverde Group	Sego	Marine shoreface sands and offshore muds
	Castle gate	Marine shoreface sands and offshore muds
Mancos Shale		Marine offshore muds

Type log and generalized depositional environments for the Mesaverde Group.

Modified from Patterson, P.E., K. Kronmueller, and T.D. Davies, 2003, Sequence stratigraphy of the Mesaverde Group and Ohio Creek Conglomerate, northern Piceance Basin, Colorado, in K.M. Peterson, T.M. Olson, and D.S. Anderson, eds., Piceance Basin 2003 Guidebook: RMAG, Denver, p. 115-128.

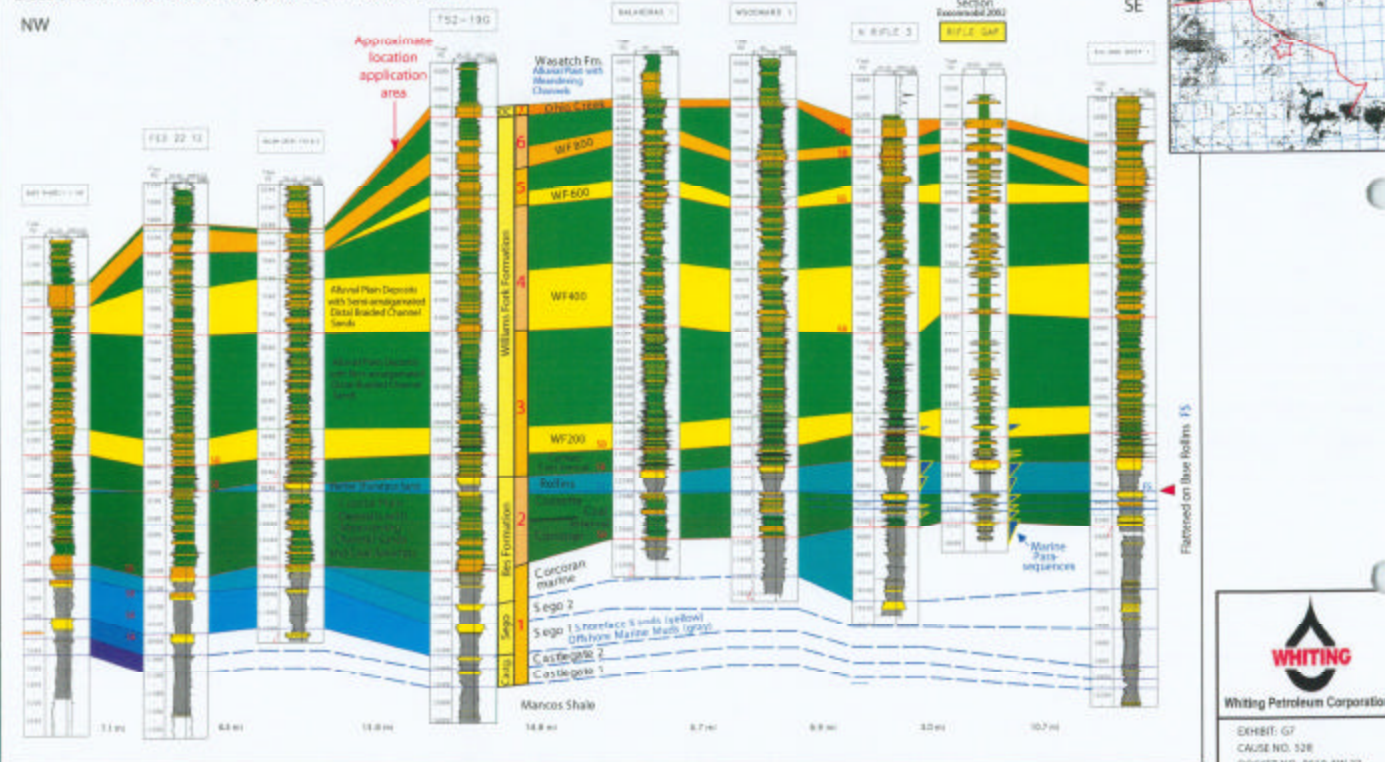


Whiting Petroleum Corporation

EXHIBIT: G3
CAUSE NO. 528
DOCKET NO. 0610-AW-22

Northern Piceance Basin
Generalized depositional
environments for the
Mesaverde Group.

Cross Section Mesaverde Group, Northern Piceance Basin



Regional stratigraphic cross section (datum = base of R15 flooding surface) of the Mesaverde Group in the northern Piceance Basin. Section originates directly south of Rangely and continues southeast across the basin to Rifle Gap and then Rifle.

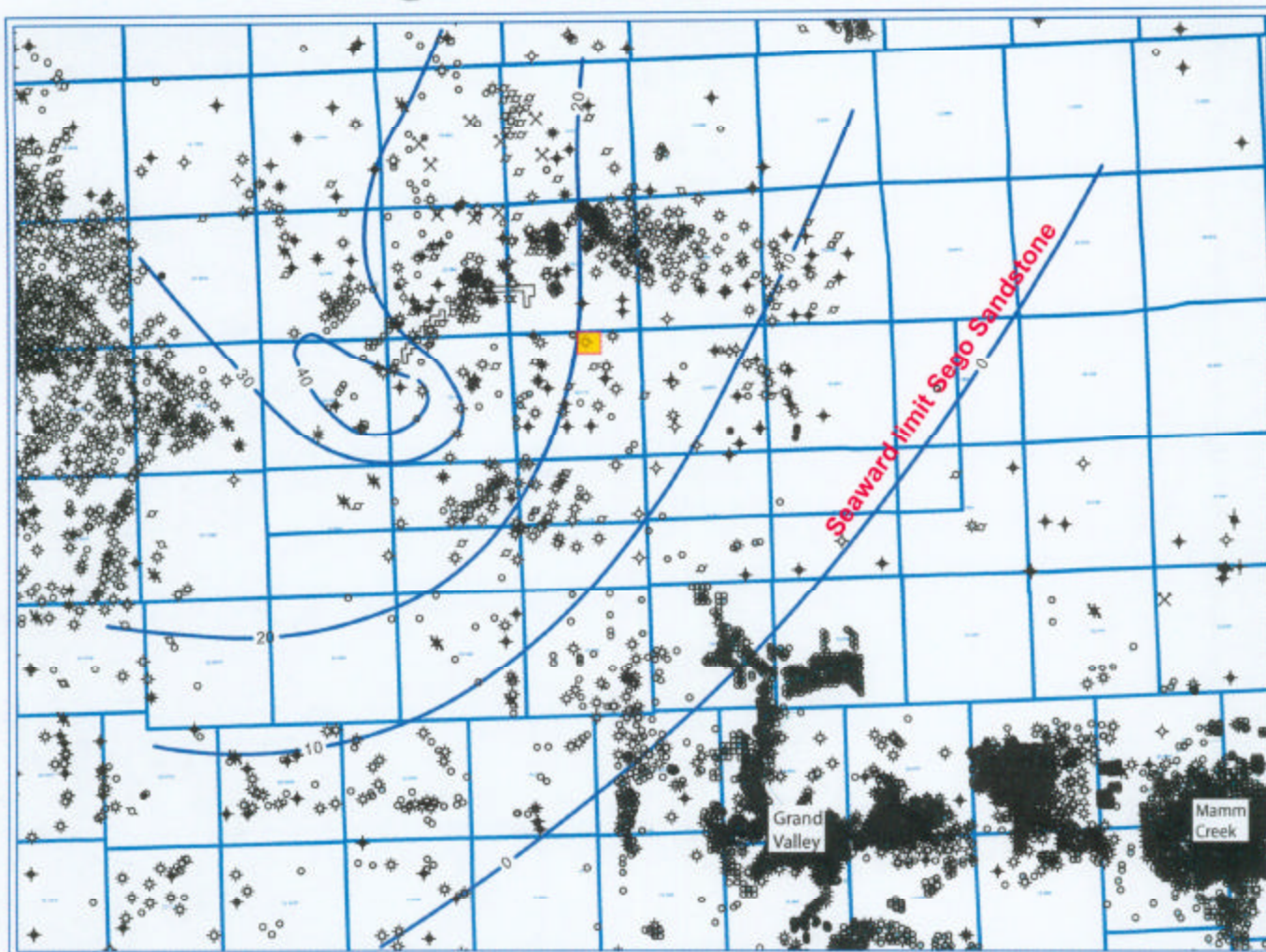
Modified from Peterson, P.E., K. Kinsman, and T.D. Davies, 2001, Sequence stratigraphy of the Mesaverde Group and Ohio Creek Conglomerate, northern Piceance Basin, Colorado, in K.M. Peterson, T.M. Olson, and D.S. Anderson, eds., Piceance Basin 2001 Guidebook RMAG, Denver, p. 115-128.



Whiting Petroleum Corporation

EXHIBIT: G7
CAUSE NO. 328
DOCKET NO. 0610-AW-22

Piceance Basin
Regional NW-SE
stratigraphic cross section
of the Mesaverde Group



Map showing net sandstone (C.I. = 10') and seaward limit of the Sego Sandstone. Previous requests to the Commission for increased density in the Iles did not include the Sego Sandstone because these application areas were beyond the seaward limit of the Sego.



Whiting Petroleum Corporation

EXHIBIT: G8
CAUSE NO. 528
DOCKET NO. 0610-AW-22

Northern Piceance Basin
Net sandstone and
seaward limit of the
Sego Sandstone