

139-53



10 Acre Density Hearing  
Williams Fork Producing Area  
Garfield and Mesa Counties, Colorado  
Docket # 0512-AW-24

Presco Corp.  
10200 Grogan's Mill Road Suite 520  
The Woodlands, Texas 77380  
281-292-7792  
[www.prescocorp.com](http://www.prescocorp.com)



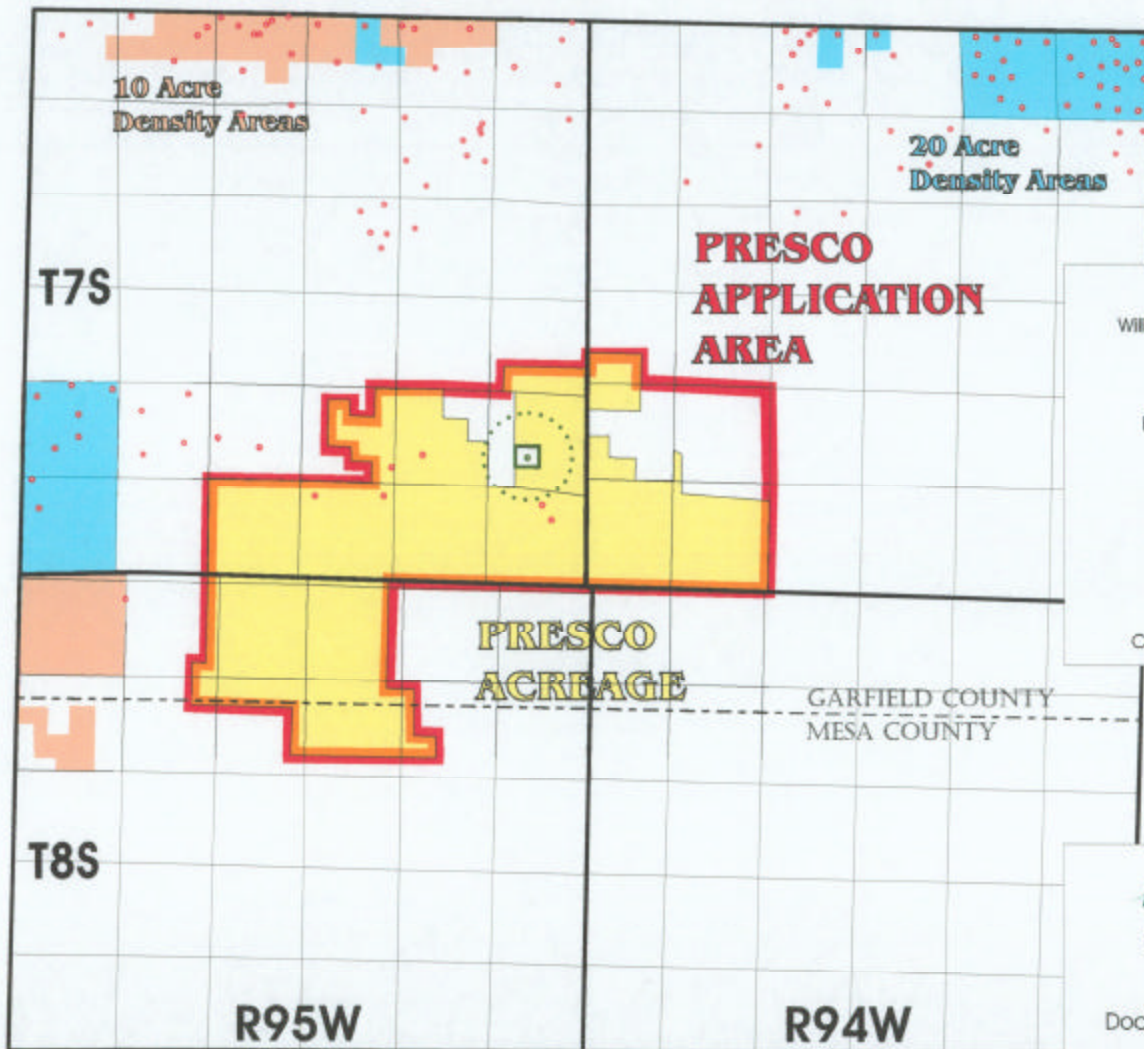


#### LIST OF EXHIBITS

L-1 Land Map  
L-2 Topographic Map  
L-3 10 Acre Areas Map

G-1 Location Map  
G-2 Type Log and Section  
G-3 Outcrop Study of Sandbody Geometry  
G-4 Isopach Map showing Relationship of  
Outcrop Area to Presco Area  
G-5 Cross section  
G-6 Parachute Sand Thickness Histogram  
G-7 Presco 27-44 Sand Thickness Histogram  
G-8 Presco 36-13 Sand Thickness Histogram  
G-9 Williams Fork Gas Generation Area

E-1 Rulison 10 Acre Pilot Map  
E-2 Rulison 10 Acre Pilot Cumulative Production  
E-3 Rulison 10 Acre Pilot Decline All  
E-4 Rulison 10 Acre Pilot 10 Acre decline  
E-5 Rulison 10 Acre Pilot Summary  
E-6 Parachute 10 Acre Pilot Map  
E-7 Parachute 10 Acre Pilot Cumulative Production  
E-8 Parachute 10 Acre Pilot Decline All  
E-9 Parachute 10 Acre Pilot post 2004 decline  
E-10 Parachute 10 Acre Pilot Summary  
E-11 Section 28-T7S-R95W Decline  
E-12 Single Well Economics



Williams Fork Penetration

Project Rulson Test

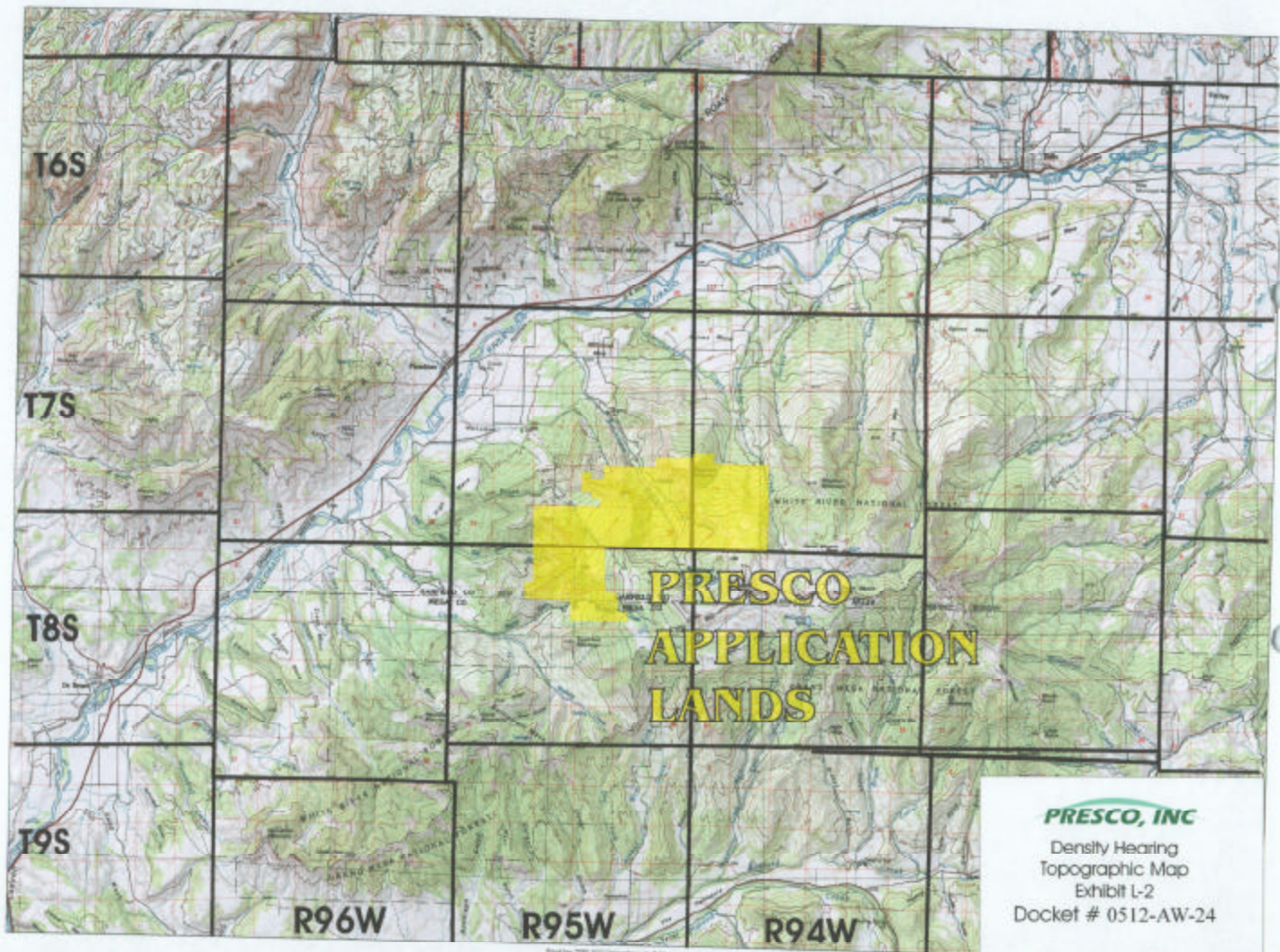
DOE Buffer Zone

COGCC 1/2 Mile Limit

**PRESCO, INC**

Density Hearing  
Land Map  
Exhibit L-1  
Docket # 0512-AW-24





**PRESCO, INC**

Density Hearing  
Topographic Map  
Exhibit L-2  
Docket # 0512-AW-24

# Piceance Basin Colorado 10-Acre Density Lands

## LEGEND

### WILLIAMS 10-ACRE DENSITY ORDERS

- Order 510-14 (7/2005)
- Orders 510-12, 479-14, 440-28 (2/2005)
- Orders 510-8, 479-12, 440-25, 139-40 (8/2003)
- Orders 510-8, 479-11, 440-23, 139-38, 495-03 (4/2003)
- Orders 510-8, 479-9, 440-22, 139-37 (7/01) Pilot area

### ENCANA 10-ACRE DENSITY ORDERS

- Order 510-13 (3/2005)
- Order 479-15 (3/2005)

### BILL BARRETT 10-ACRE DENSITY ORDER

- Order 191-8,11

### BILL BARRETT CORP SETBACK ORDER

- Order 191-9 (2/2005)

### PDC 10-ACRE DENSITY ORDER

- Order 510-11 (7/2004)

### NOBLE 10-ACRE DENSITY ORDER

- Order 139-45 (2/2005)

### PETROGULF 10-ACRE DENSITY ORDER

- Order 139-47 (5/2005)

### OXY 10-ACRE DENSITY ORDER

- Order 510-15

### ANTERO RESOURCES 10-ACRE DENSITY ORDERS

- Order 510
- Order 523
- Areas with Williams Fork Orders under 20-Acre Density Spacing

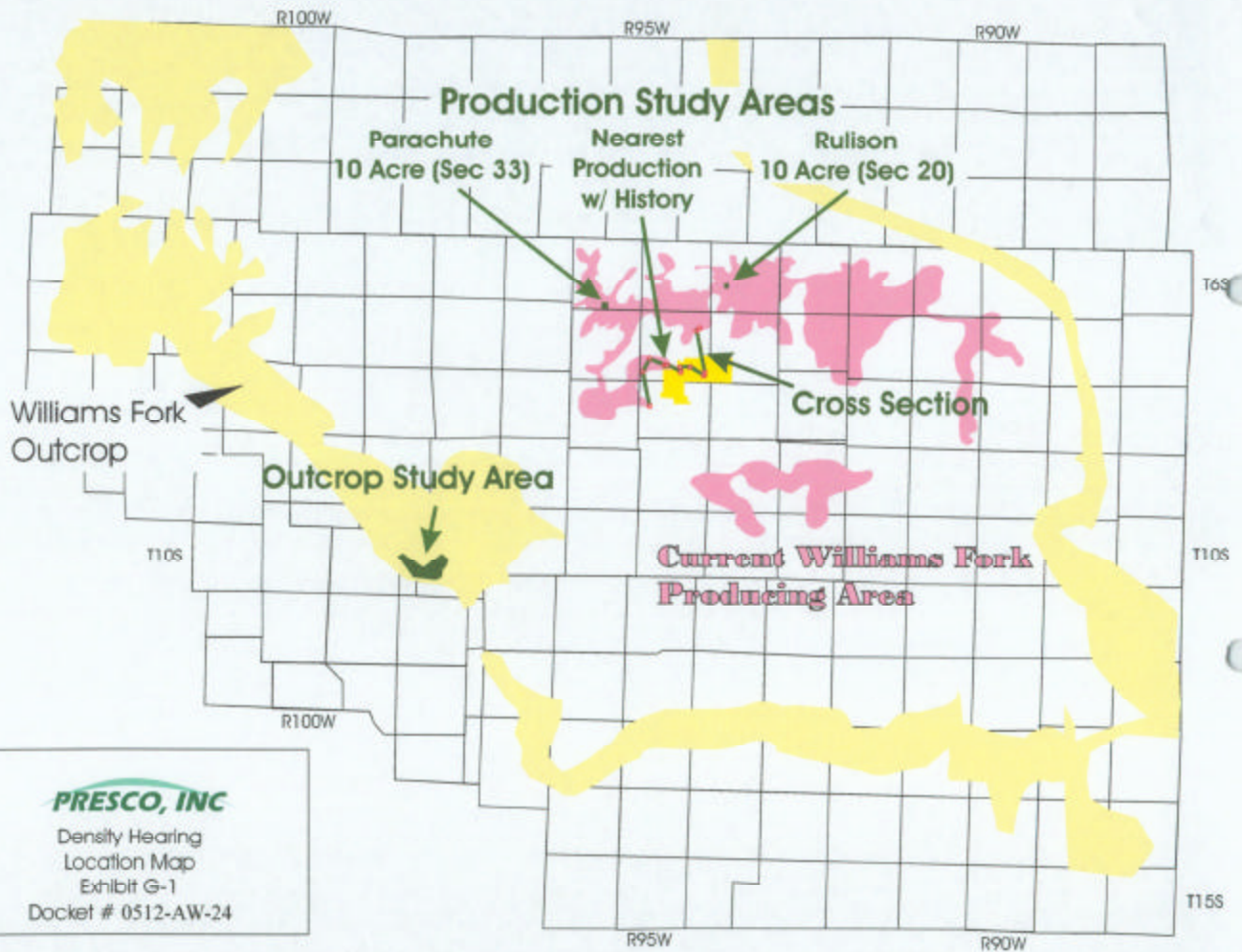
- Areas with Williams Fork and/or Mesa Verde Orders not under 10-Acre or 20-Acre Density Spacing

Presco  
Application  
Lands

**PRESCO, INC**

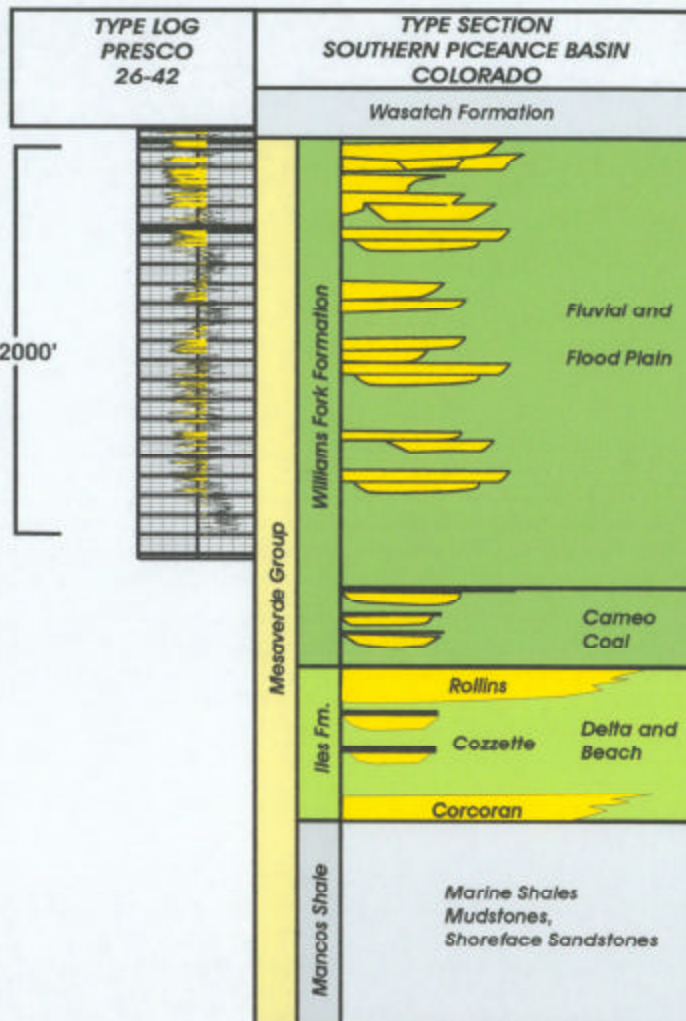
10-Acre Density  
Exhibit L-3  
Docket No. 0512-AW-24





**PRESCO, INC**

Density Hearing  
Location Map  
Exhibit G-1  
Docket # 0512-AW-24



**PRESKO, INC**  
 Density Hearing  
 Type Section and Log  
 Exhibit G-2  
 Docket #0512-AW-24

## Outcrop Study

	N	Minimum	Maximum	Mean	Median	Std. Dev.
<b>TOTAL POPULATION</b>						
Thickness (feet)	138	0.5	29.0	9.3	8.0	5.9
Apparent Width (feet)	138	40.1	2791.1	528.4	400.2	491.2
Width-Thickness Ratio	138	3.9	463.8	68.2	52.8	62.9

### TYPE A SANDBODIES

Thickness (ft)	9	3.5	21.0	9.2	6.0	6.6
Apparent Width (ft)	9	46.4	290.5	98.5	81.0	74.0
Width-Thickness Ratio	9	3.9	14.5	11.8	12.6	3.3

### TYPE B SANDBODIES

Thickness (ft)	30	4.1	18.0	8.8	7.7	3.5
Apparent Width (ft)	30	112.0	2316.3	505.1	400.2	450.3
Width-Thickness Ratio	30	16.4	227.1	61.3	41.3	50.0

### TYPE C SANDBODIES

Thickness (ft)	55	4.5	29.0	13.8	13.2	5.1
Apparent Width (ft)	55	139.7	2791.1	814.8	674.3	545.3
Width-Thickness Ratio	55	9.1	158.6	61.4	53.3	35.9

### TYPE D SANDBODIES

Thickness (ft)	14	2.5	9.1	5.4	5.4	1.9
Apparent Width (ft)	14	72.9	510.4	234.8	165.4	152.5
Width-Thickness Ratio	14	13.9	122.1	44.7	37.3	28.3

### TYPE E SANDBODIES

Thickness (ft)	28	0.5	8.5	2.8	2.8	1.5
Apparent Width (ft)	28	40.1	843.3	275.7	247.4	201.9
Width-Thickness Ratio	28	21.7	463.8	119.0	92.8	100.0

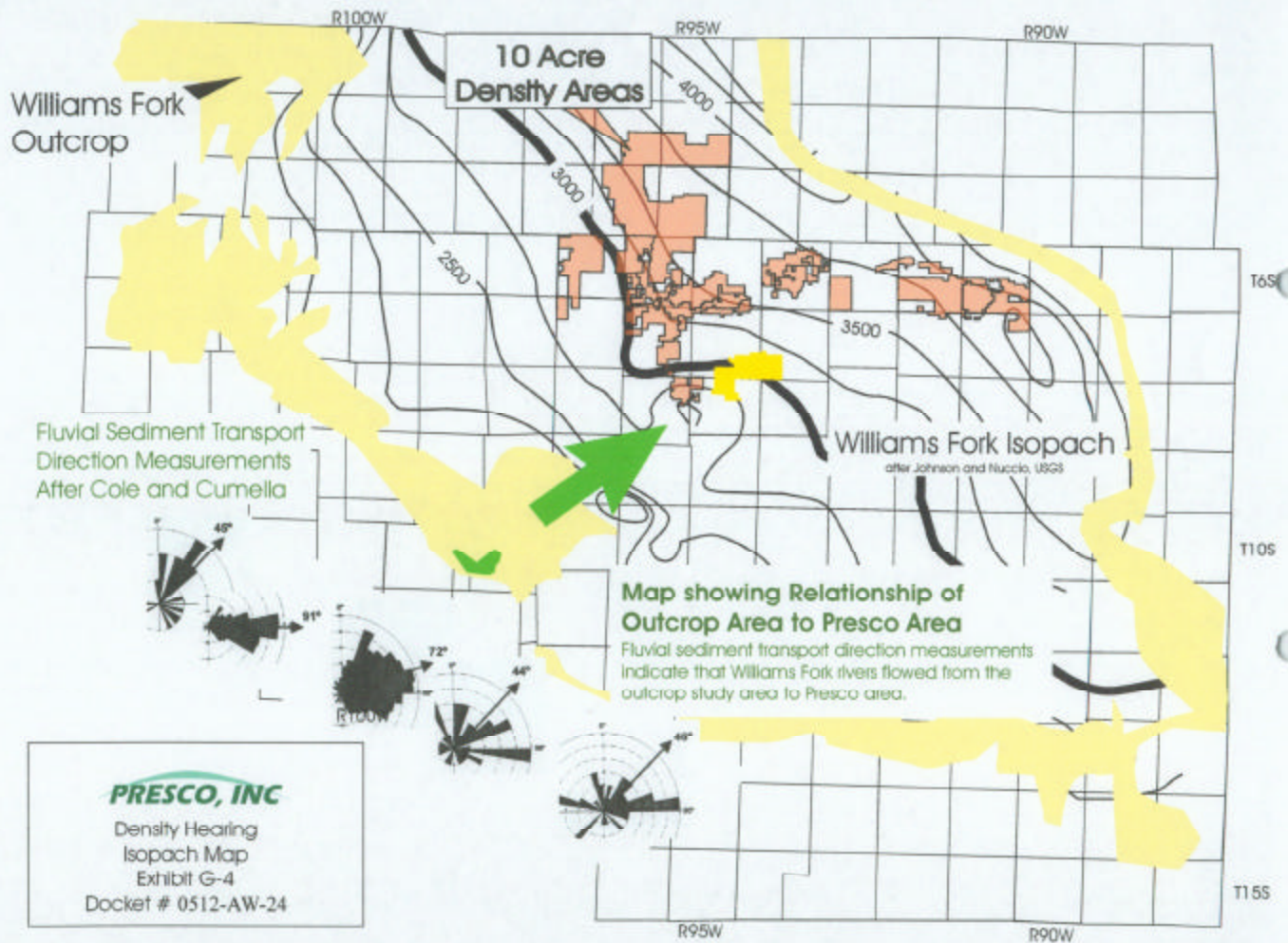
Statistical summary of sand-body geometry  
after Cole and Cumella

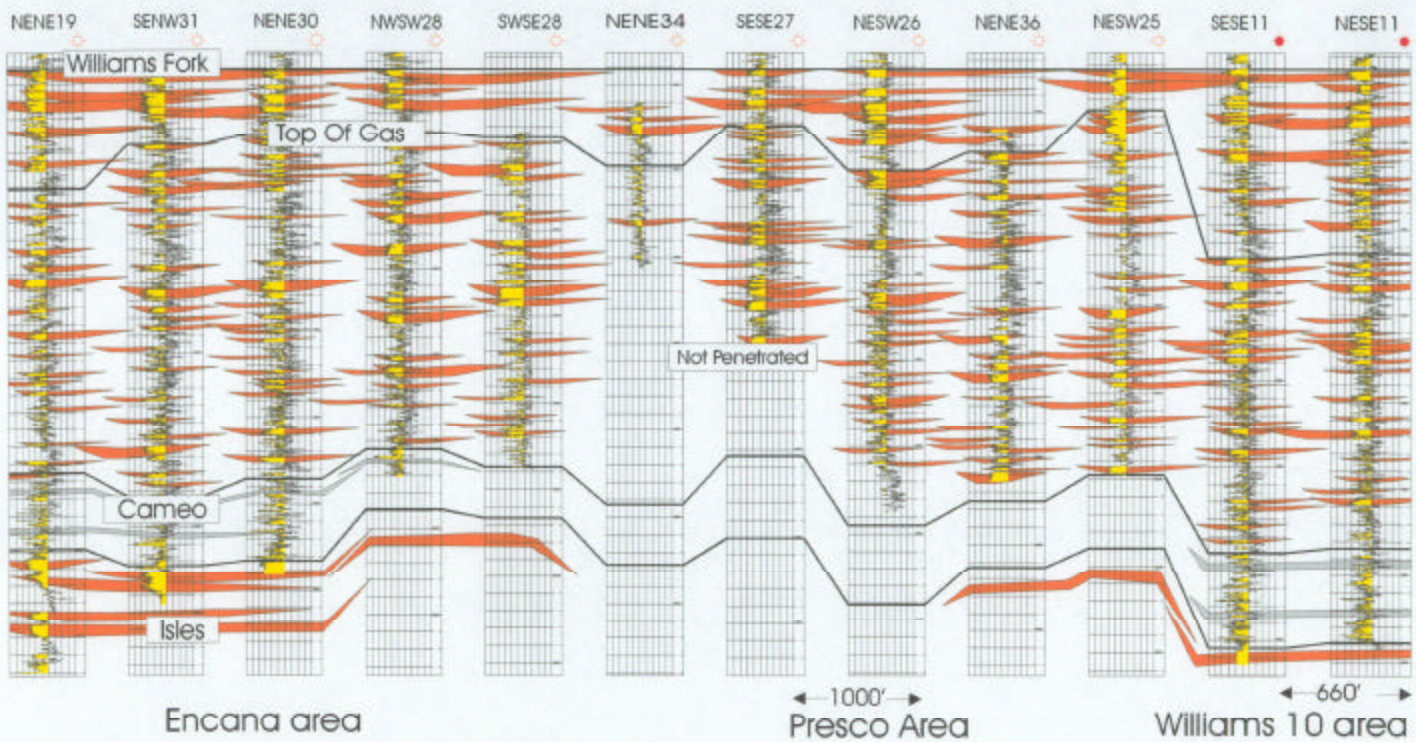
**PRESCO, INC**

Density Hearing  
Sandbody Geometry  
Exhibit G-3  
Docket # 0512-AW-24

Outcrop studies provide the best estimation of  
thickness and width of Williams Fork  
sand body geometries





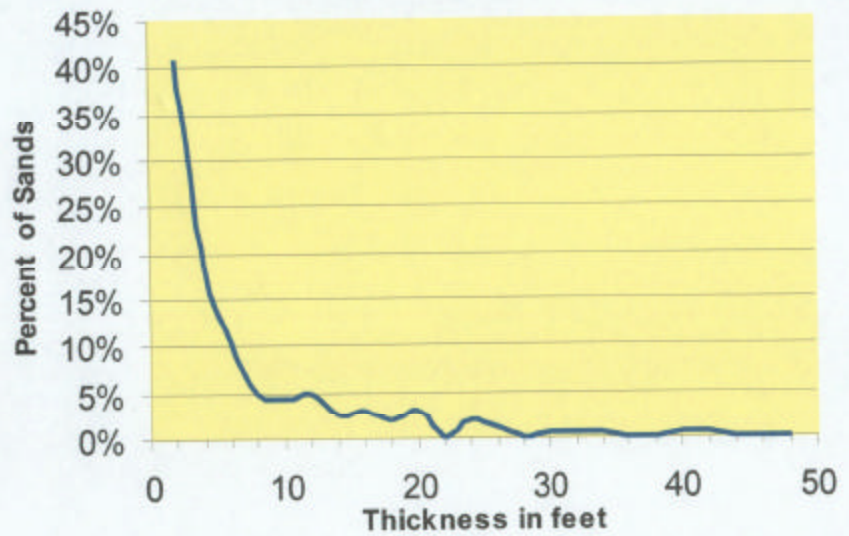


**PRESCO, INC**

Density Hearing  
Cross Section  
Exhibit G-5  
Docket # 0512-AW-24

Recent drilling indicates similar discontinuous  
sand bodies in Presco Area as in Encana  
and Williams areas

**Parachute 10 Acre Area**  
**avg thickness is 6.4 feet**  
**median thickness is 3.0 feet**  
**43.7% sand**

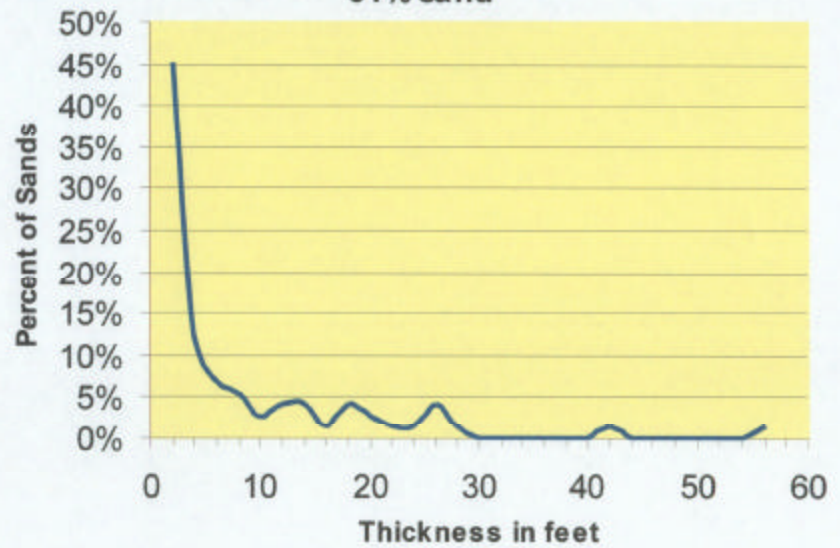


**PRESCO, INC**

Density Hearing  
Sand Thickness Histogram  
Exhibit G-6  
Docket # 0512-AW-24



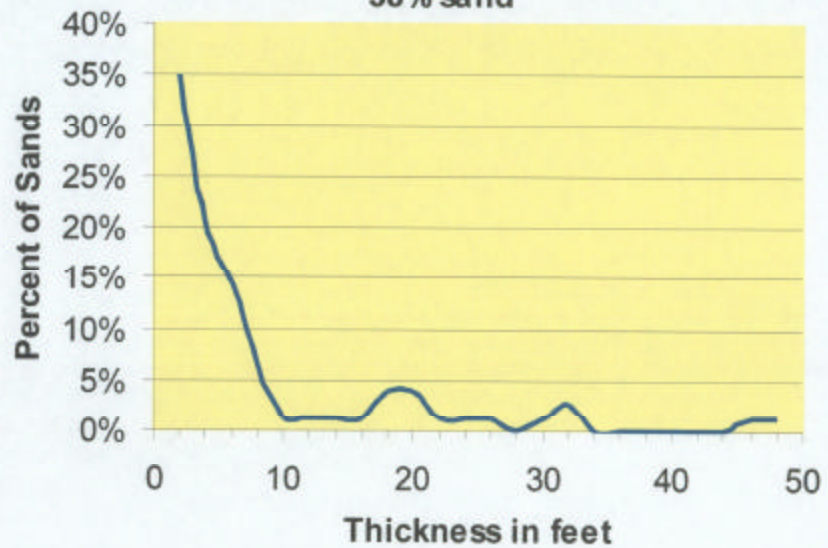
**Battlement Mesa 27-44**  
**avg thickness is 8.1 feet**  
**median thickness is 3.0 feet**  
**51% sand**



**PRESCO, INC**

Density Hearing  
Sand Thickness Histogram  
Exhibit G-7  
Docket # 0512-AW-24

**Battlement Mesa 36-13**  
**avg thickness is 8.16 ft**  
**median thickness is 3.5 ft**  
**38% sand**



**PRESCO, INC**

Density Hearing  
Sand Thickness Histogram  
Exhibit G-8  
Docket # 0512-AW-24