

PICEANCE BASIN SCHEMATIC CROSS SECTION

Stephen P. Cumella and Douglas B. Ostby



Piceance Basin-Centered Gas Model - Maximum Burial (approx. 15,000 ft)

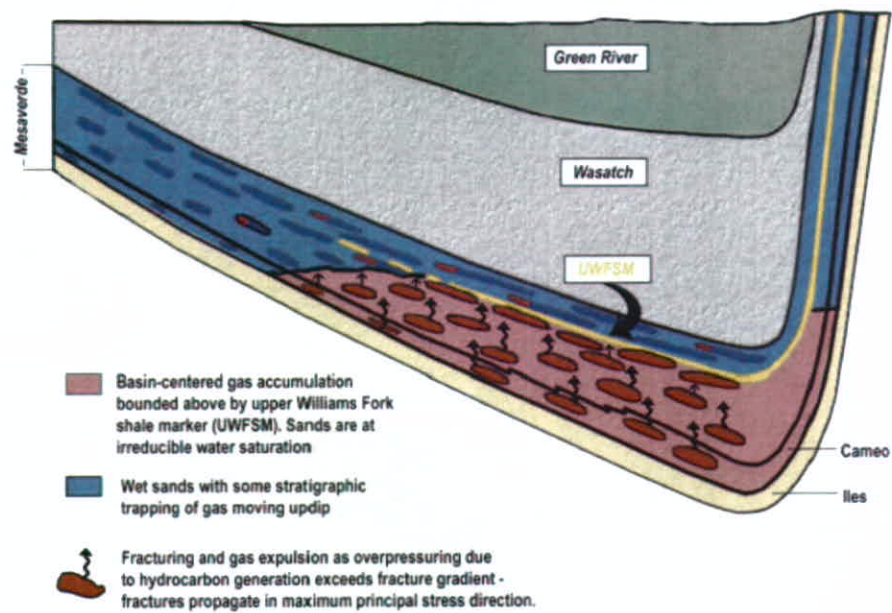


Figure 25. Basin-centered gas model for the Piceance Basin during maximum burial. Line of cross section shown on Figure 26.

Piceance Basin-Centered Gas Model - Present Day

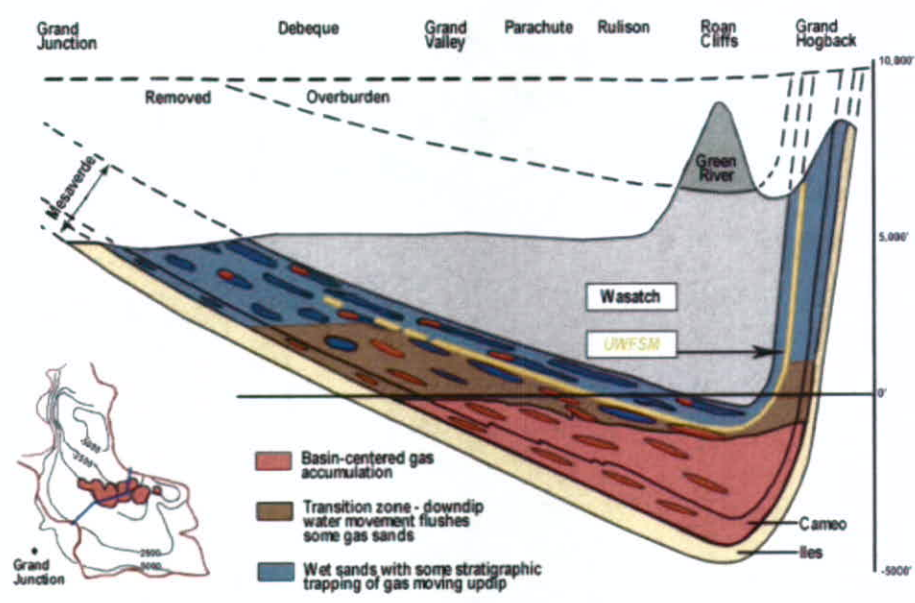


Figure 26. Basin-centered gas model for the Piceance Basin for present day. Line of cross section shown on inset map.

TYPE LOG

Stephen P. Cumella

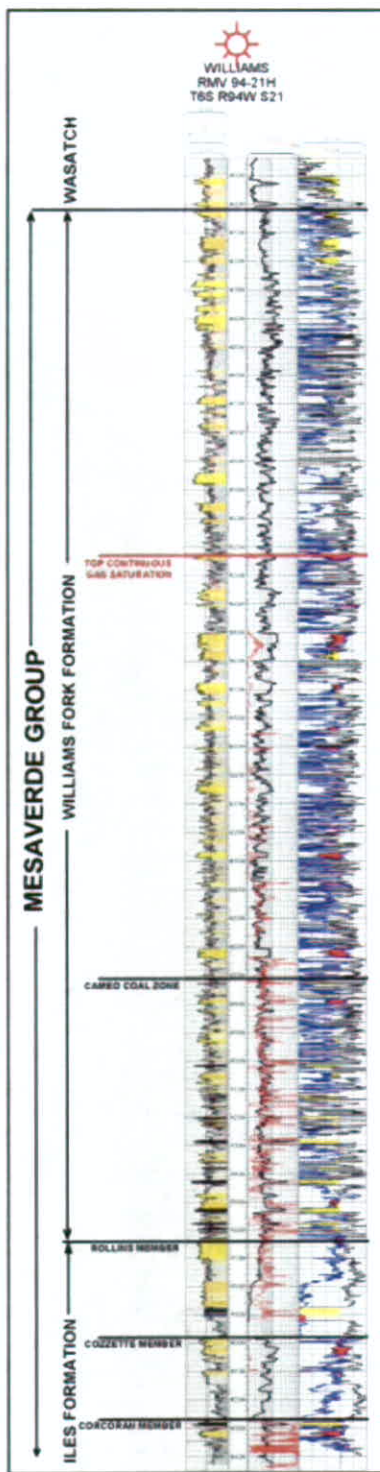


Figure 1. Type log for the Mesaverde Group in the Grand Valley, Parachute, and Rulison area.

EXHIBIT F

APPLICANT: DOLPHIN ENERGY CORPORATION
GARFIELD COUNTY/UN-NAMED FIELD

CAUSE NO. 191
DOCKET NO. 0606-SP-37

FLUVIAL SYSTEM REPRESENTATION

Stephen P. Cumella and Douglas B. Ostby

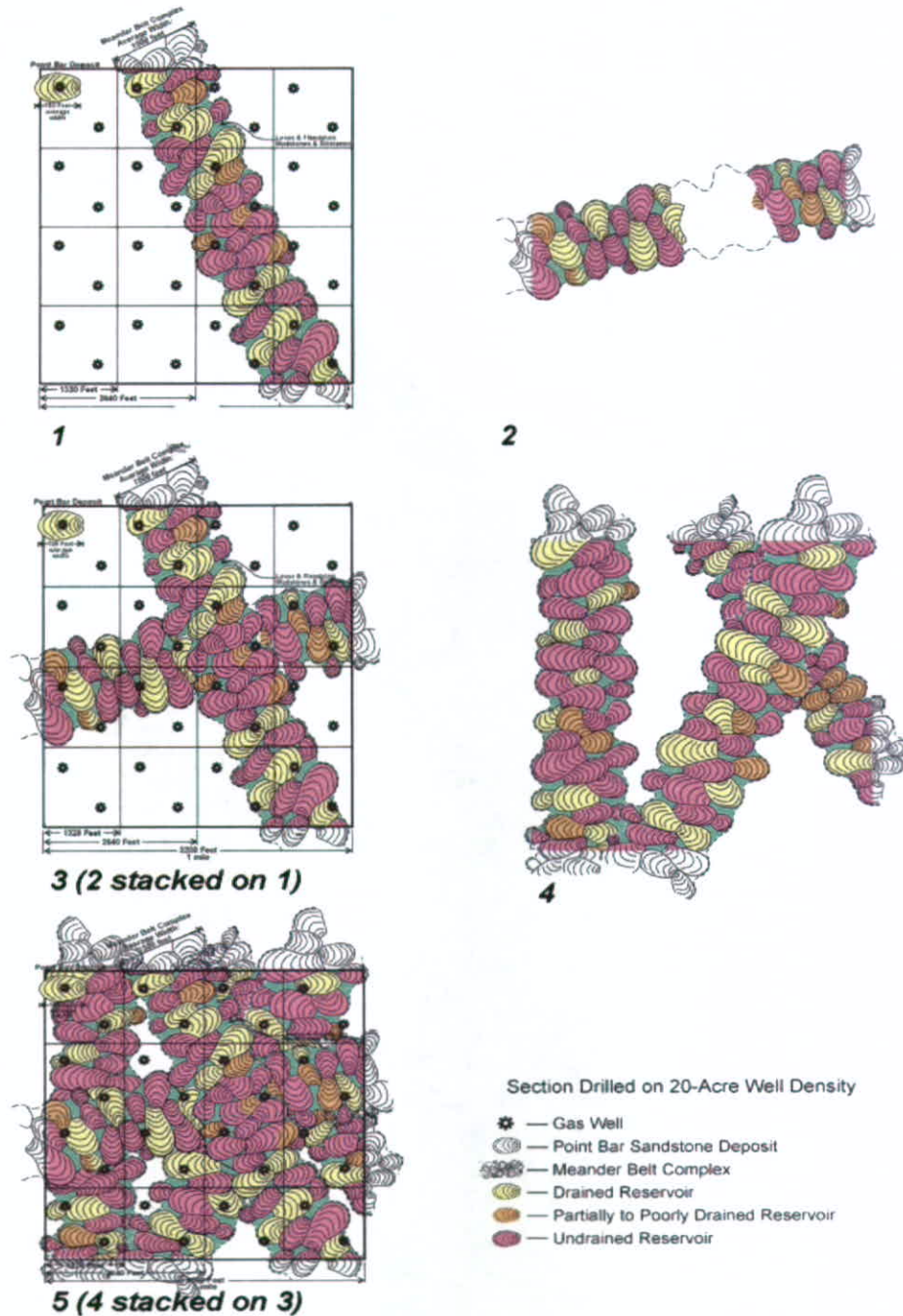


Figure 28. Stacking of hypothetical Williams Fork meanderbelt sandstone reservoirs showing the need for 10-acre density. Figure originally done by Terry Barrett.

EXHIBIT H

APPLICANT: DOLPHIN ENERGY CORPORATION
GARFIELD COUNTY/UN-NAMED FIELD

CAUSE NO. 191
DOCKET NO. 0606-SP-37

WASTED RESOURCE ON 40-ACRE SPACING

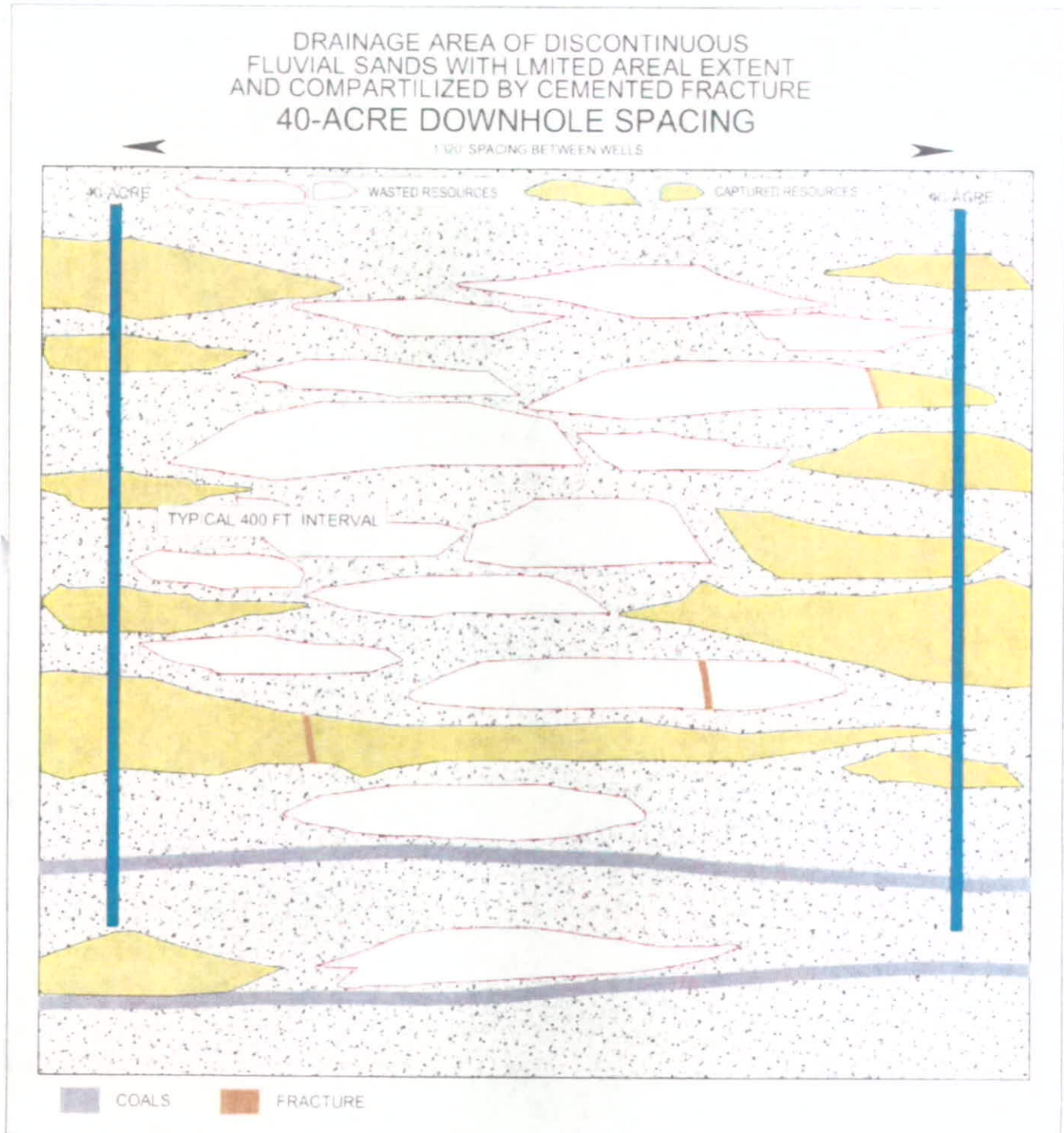


EXHIBIT I

APPLICANT: DOLPHIN ENERGY CORPORATION
GARFIELD COUNTY/UN-NAMED FIELD

CAUSE NO. 191
DOCKET NO. 0606-SP-37

WASTED RESOURCE AT 10 ACRE SPACING

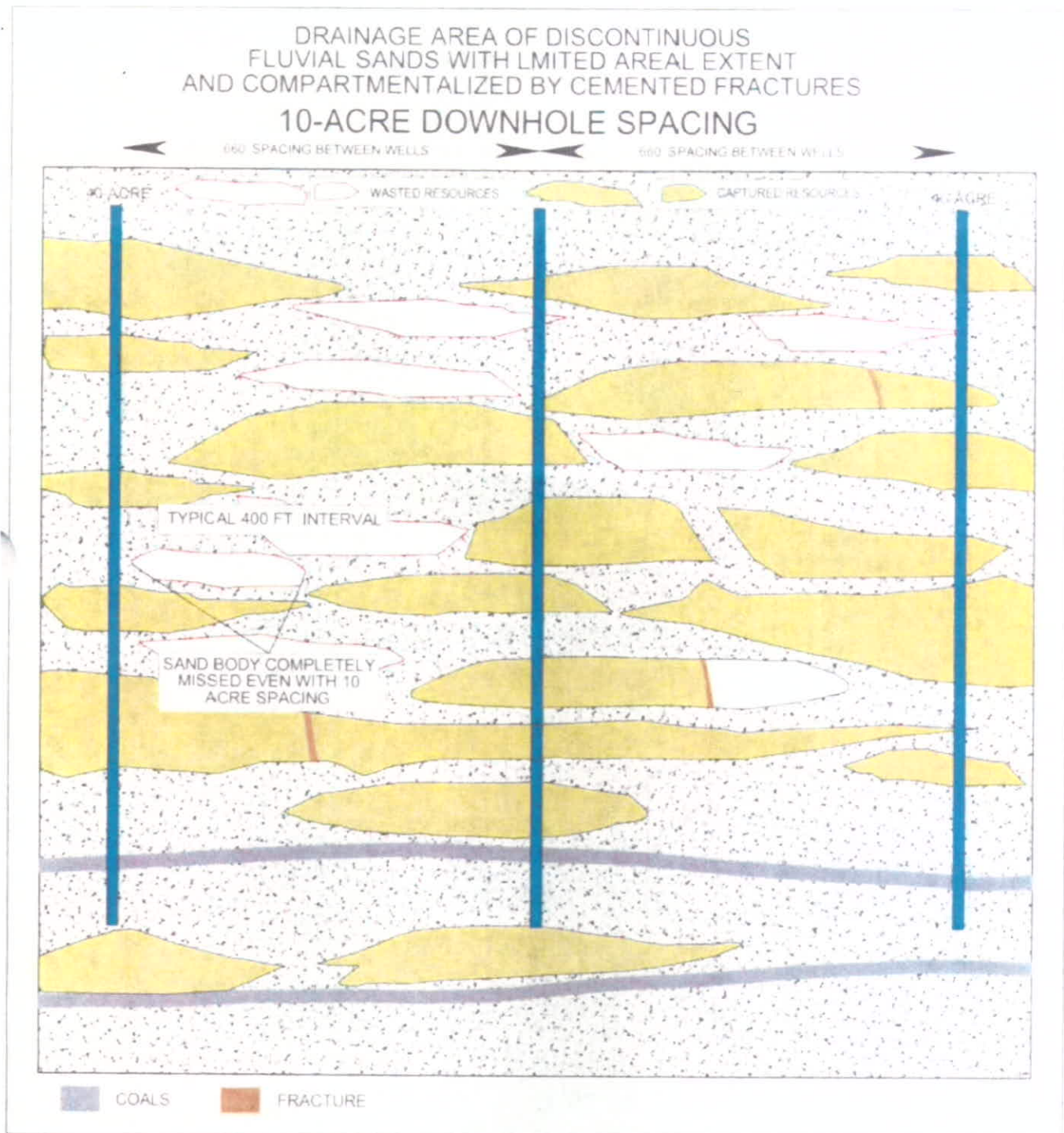
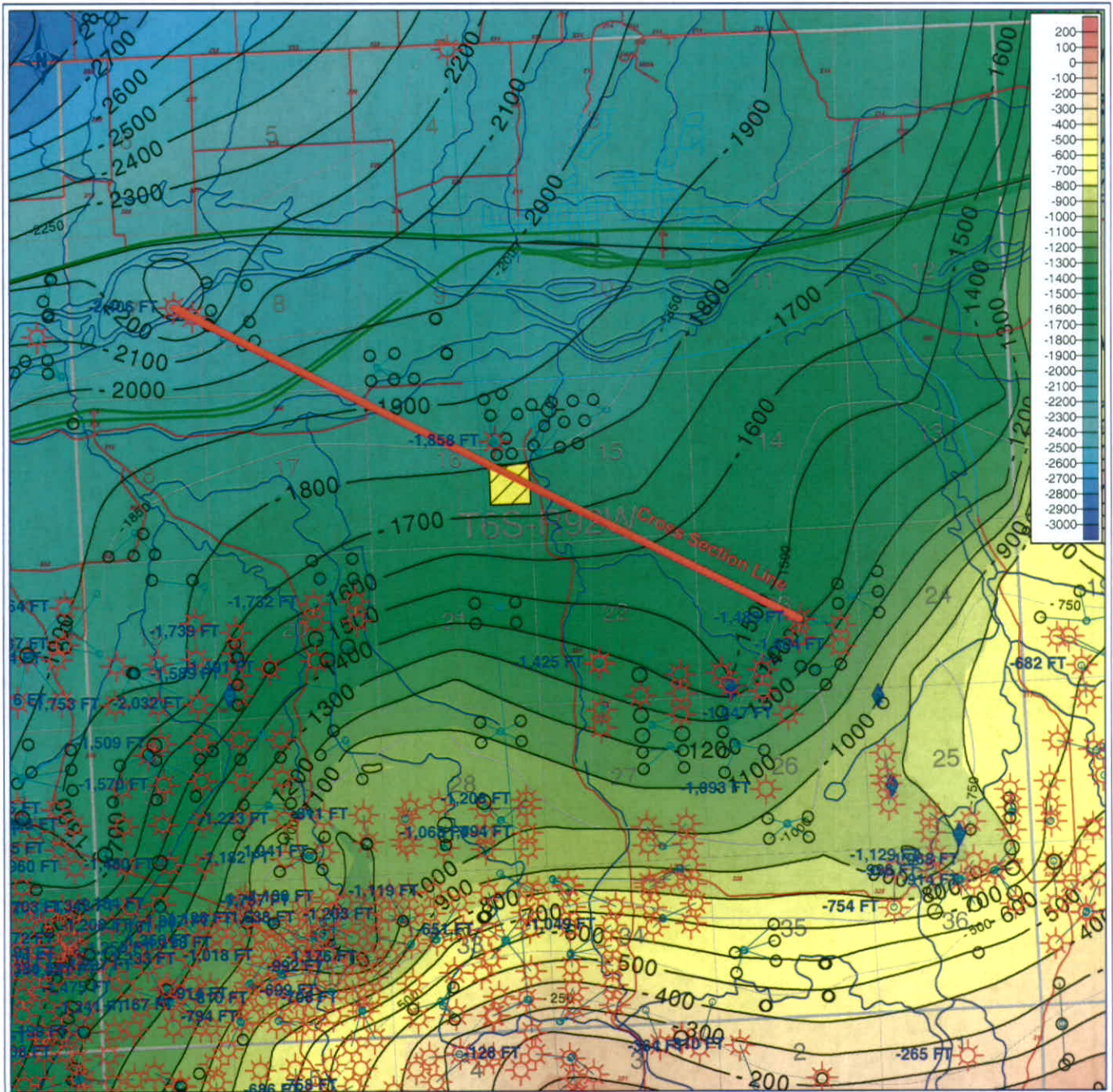


EXHIBIT K

APPLICANT: DOLPHIN ENERGY CORPORATION
GARFIELD COUNTY/UN-NAMED FIELD

CAUSE NO. 191
DOCKET NO. 0606-SP-37

STRUCTURE MAP Top of Rollins Sandstone



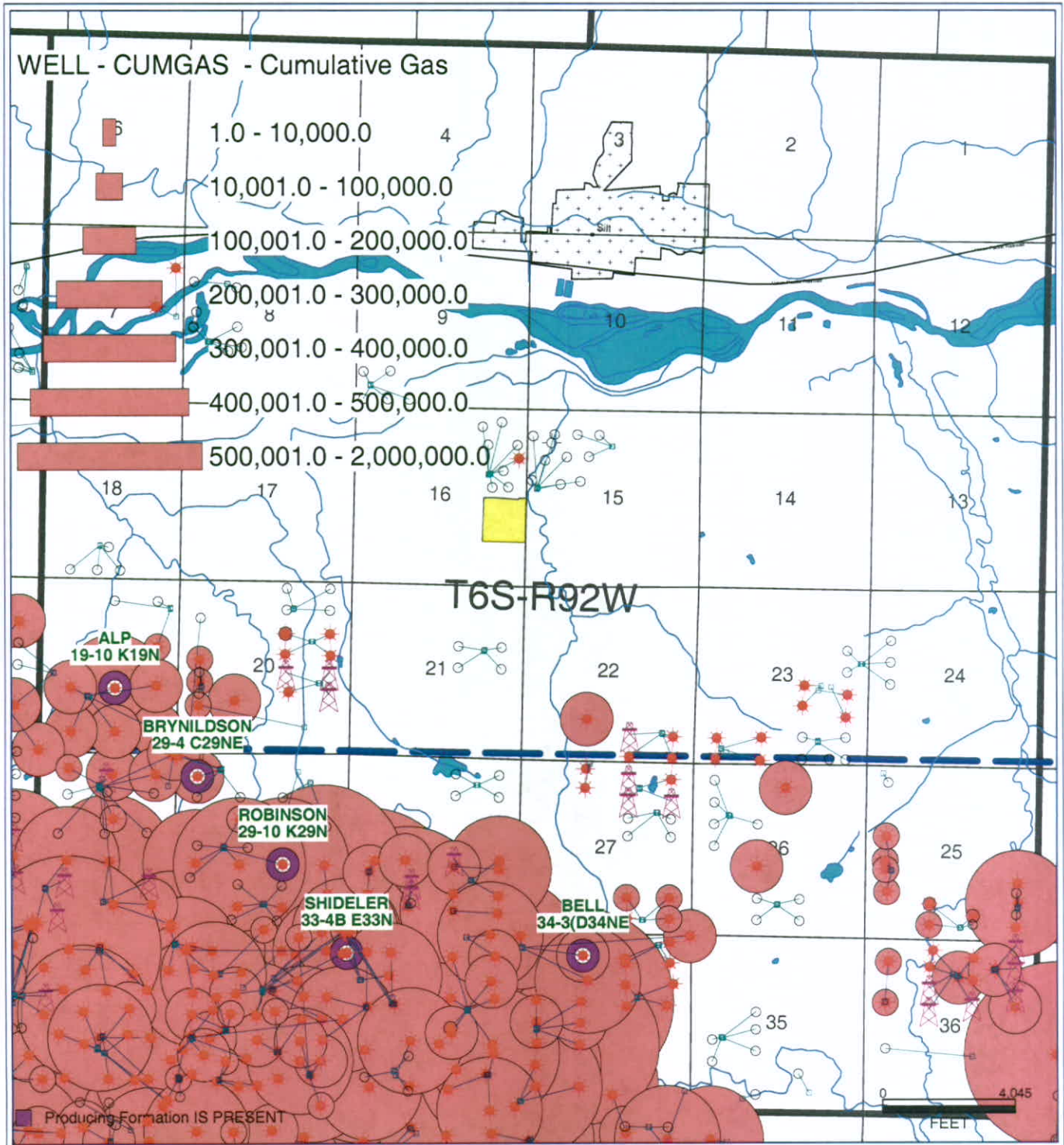
PETRA 7/26/2006 12:16:37 PM

EXHIBIT O

APPLICANT: DOLPHIN ENERGY CORPORATION
GARFIELD COUNTY/UN-NAMED FIELD

CAUSE NO. 191
DOCKET NO. 0606-SP-37

Biscuit Ranch Area Bubble Map of Cumulative Gas Production



Production

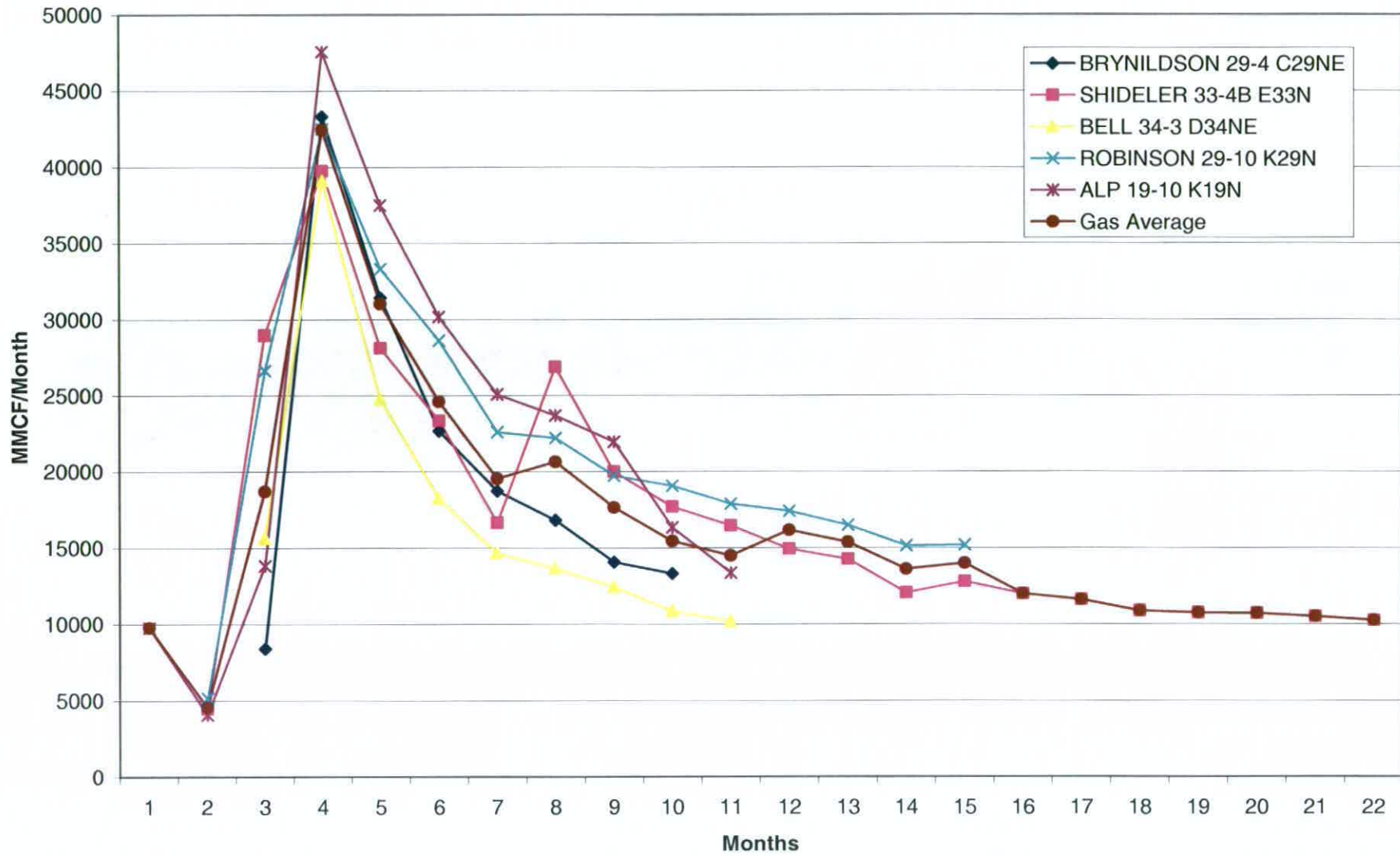
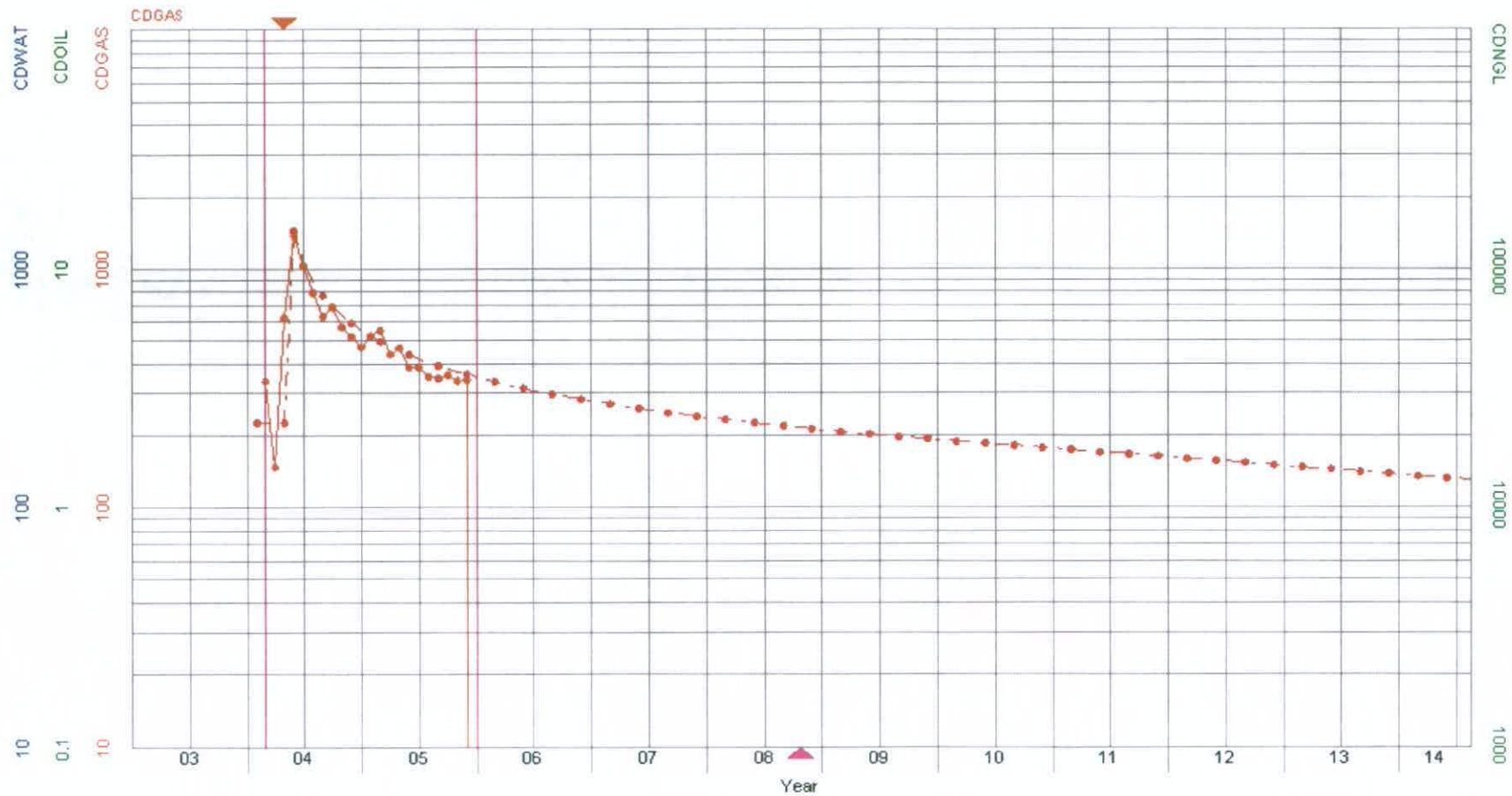


EXHIBIT R

APPLICANT: DOLPHIN ENERGY CORPORATION
GARFIELD COUNTY/UN-NAMED FIELD

CAUSE NO. 191
DOCKET NO. 0606-SP-37

TYPE CURVE



Type Curve Forecast

