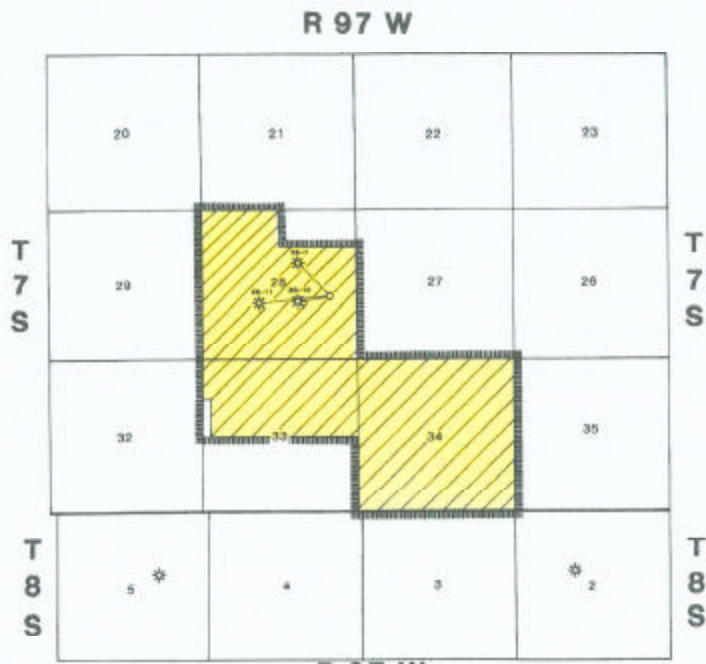


510-29



INDEX MAP



APPLICATION AREA



LARAMIE ENERGY, LLC BLM LEASES

Exhibit No. 1

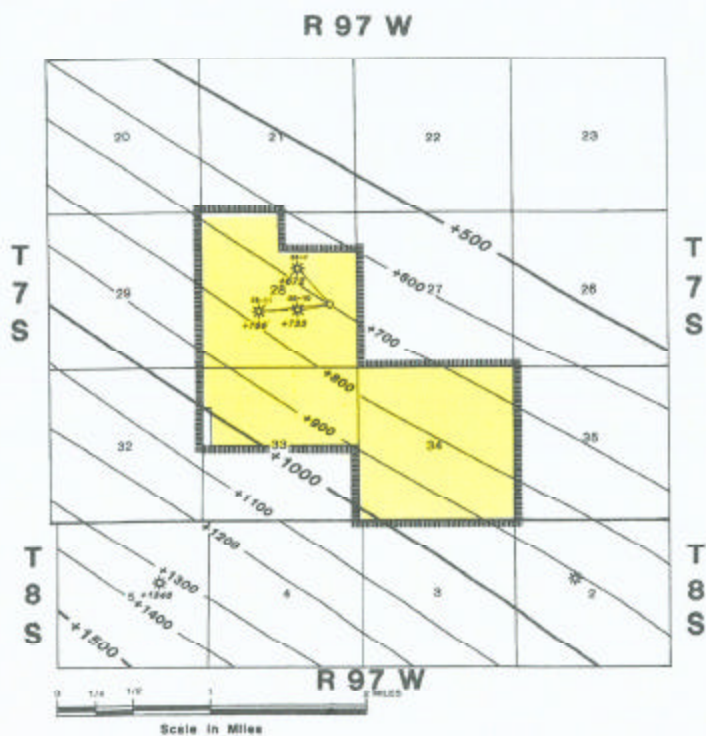
Laramie Energy, LLC

P. Kacerguis

Cause No. 510
Docket No. 0611-AW-29

Land Map

Garfield County, Colorado
Logan Trail Area



APPLICATION AREA



LARAMIE ENERGY, LLC LEASEHOLD



INDEX MAP

Exhibit No. 2

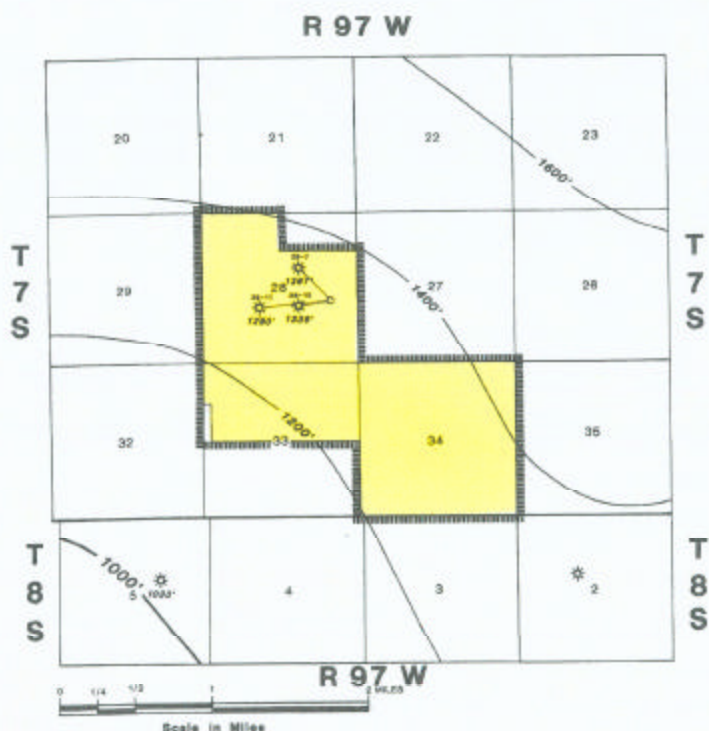
Laramie Energy, LLC

T. D. Kirkpatrick

Cause No. 510
Docket No. 0611-AW-29

Structure Top Rollins Fm.
C.I. = 100 Feet

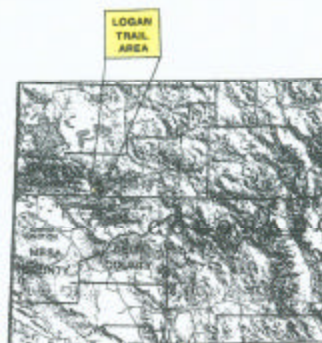
Garfield County, Colorado
Logan Trail Area



APPLICATION AREA



LARAMIE ENERGY, LLC LEASEHOLD



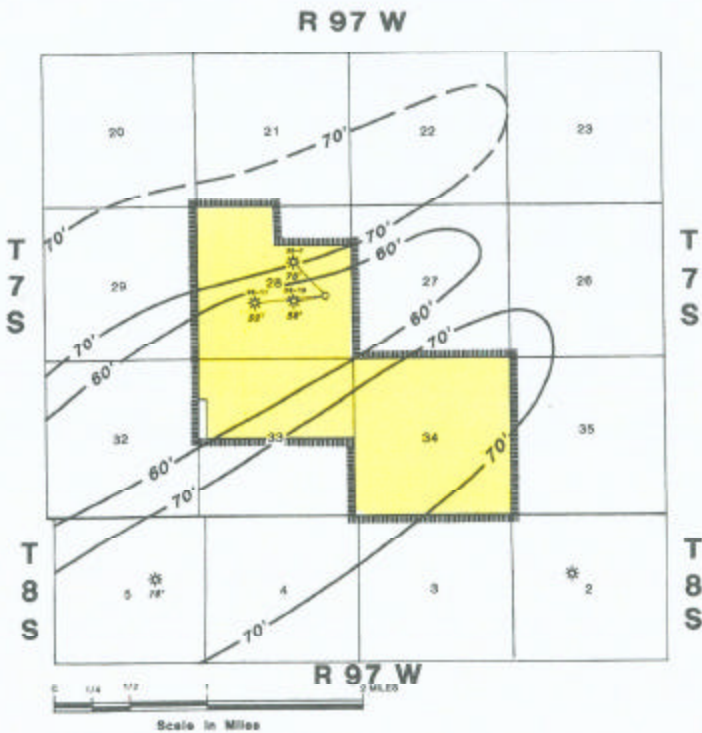
INDEX MAP

Exhibit No. 3

Laramie Energy, LLC

T. D. Kirkpatrick

Cause No. 510
Docket No. 0611-AW-29
Williams Fork Fm.
Basin Centered
Gas System
Isopach:
Gas Saturated Interval
C.I. = 200 Feet
Garfield County, Colorado
Logan Trail Area



APPLICATION AREA



LARAMIE ENERGY, LLC LEASEHOLD



INDEX MAP

Exhibit No. 4

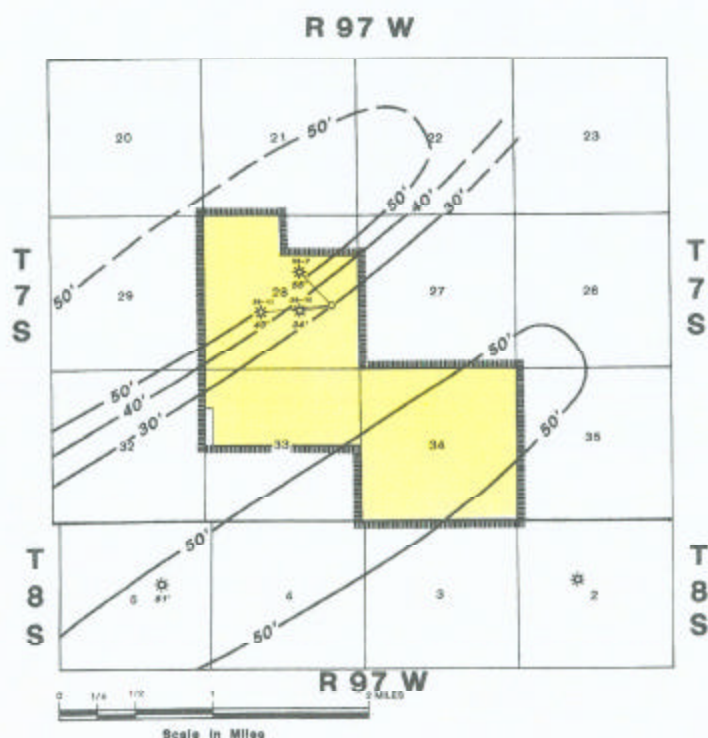
Laramie Energy, LLC

T. D. Kirkpatrick

Cause No. 510
Docket No. 0611-AW-29

**Lower Cozzette
Net Sand Isopach**
(Net: ≤ 75 API/8% Density Porosity)
C.I. = 10 Feet

Garfield County, Colorado
Logan Trail Area



APPLICATION AREA



LARAMIE ENERGY, LLC LEASEHOLD



INDEX MAP

Exhibit No. 5

Laramie Energy, LLC

T. D. Kirkpatrick

Cause No. 510
Docket No. 0611-AW-29

Upper Corcoran
Net Sand Isobach
(Net: 575 API/8% Density Porosity)
C.I. = 10 Feet

Garfield County, Colorado
Logan Trail Area

