

Williams Production RMT Company

SPACING & 10 ACRE DENSITY APPLICATION

Piceance Basin
Garfield County, Colorado
T7S R96W SW/4SW/4 of Sec 26

- Williams 100% WI
- Williams Partial Interest
- Unleased Minerals or Leased to Others
- Producing
- Location
- Proposed 160 Acre Drilling & Spacing Unit
- I-70
- Railroad
- Stream

EXHIBIT "L-1"

CAUSE NO.:

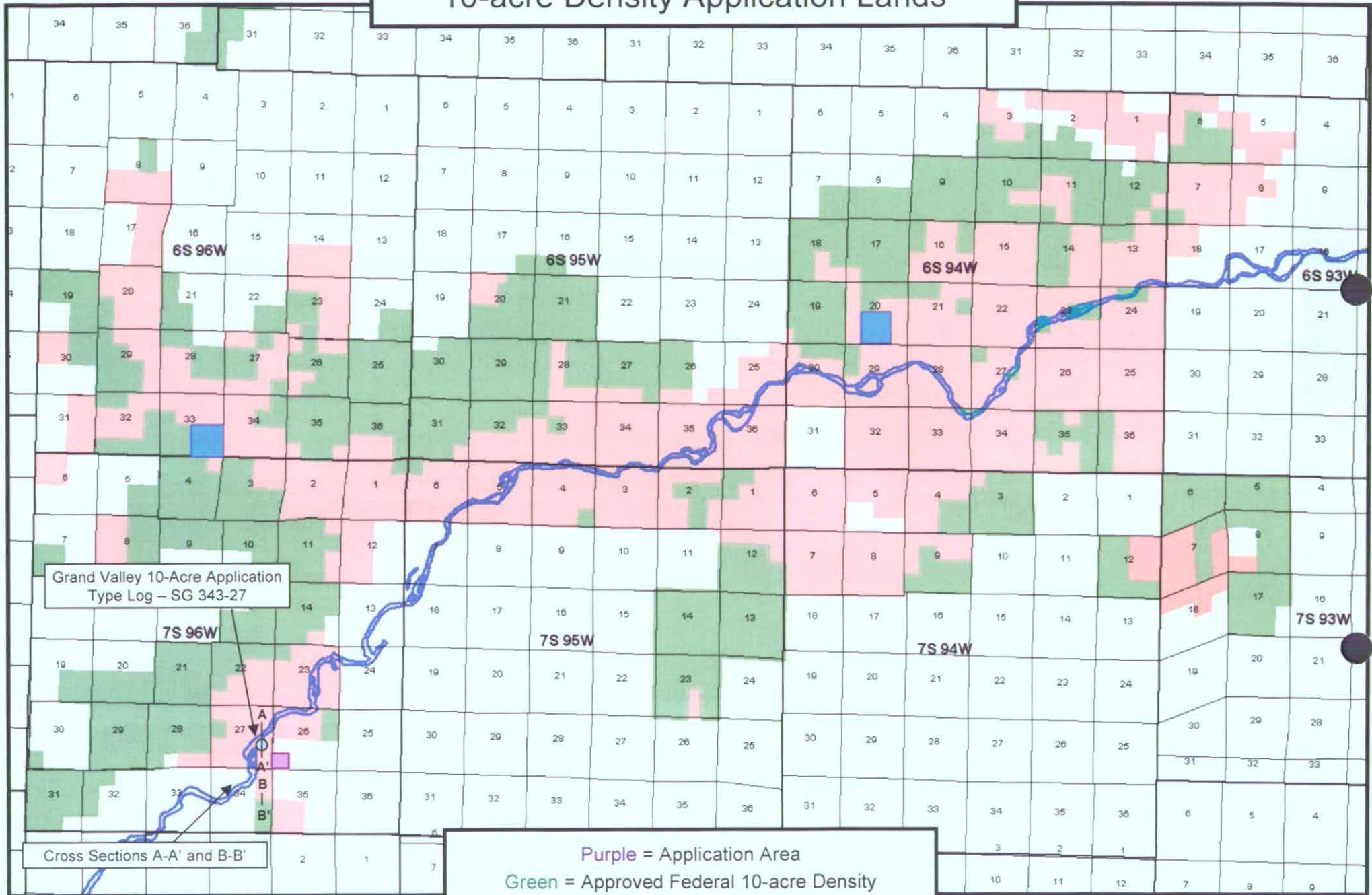
DOCKET NO.:



#510-38

RECEIVED
AUG - 9 07
COGCC

10-acre Density Application Lands



Grand Valley 10-Acre Application
Type Log – SG 343-27

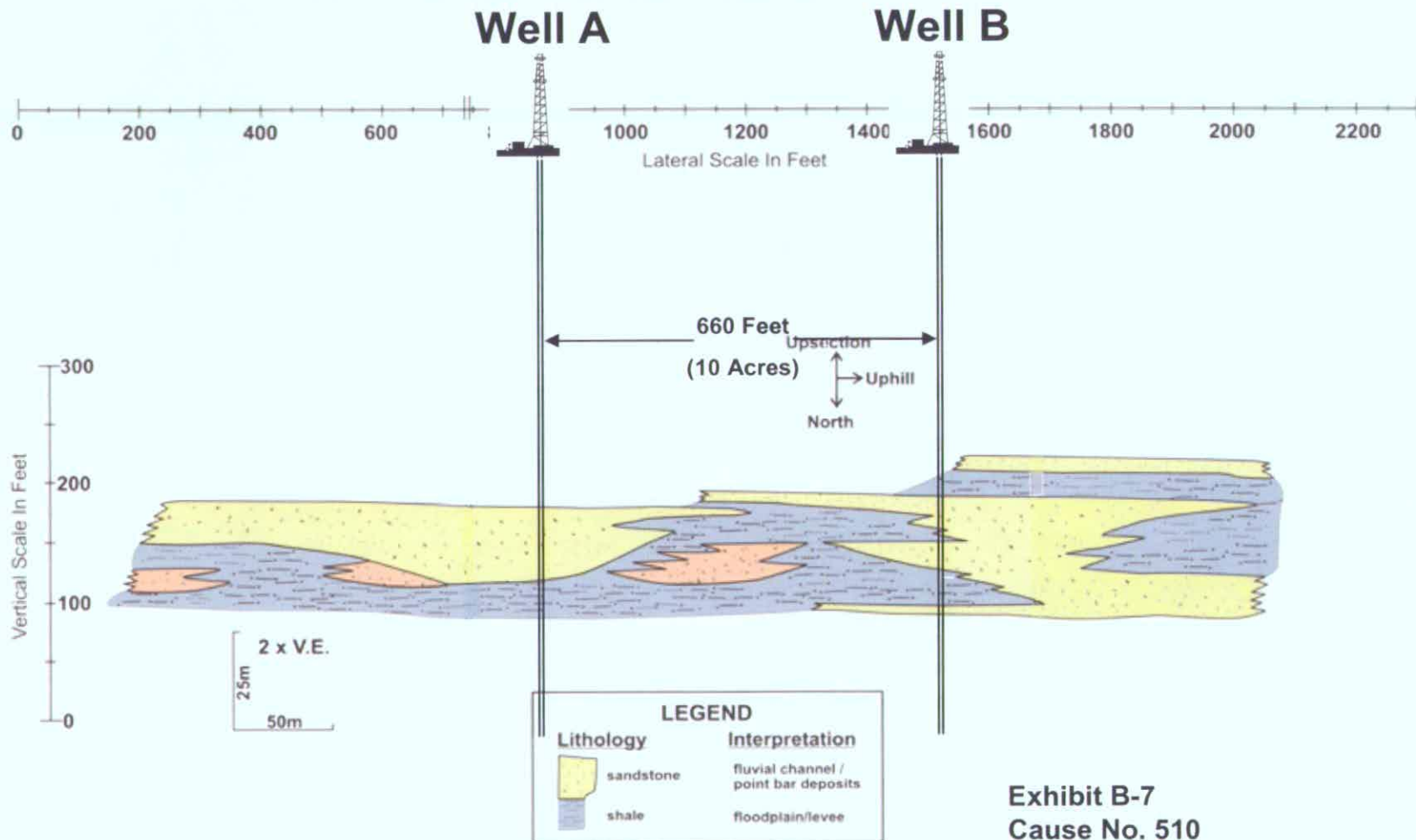
Cross Sections A-A' and B-B'

Purple = Application Area
Green = Approved Federal 10-acre Density
Red = Approved Fee 10-acre Density
Blue = 10-acre Pilot Areas (2001)

Exhibit: A-2
Cause No.: 510
Docket No.: 0710-SP-27

Williams Fork Sandstone Bodies With Hypothetical 10-Acre Wells

Eastern Margin of Piceance Basin - Mesaverde Outcrop at Rifle Gap (near Rifle, Colorado)



Outcrop of lens 8, west side of Rifle Gap, modified from Lorenz, 1982 (Pg. 28, Fig. 12).

Exhibit B-7
Cause No. 510
Docket No. 0710-SP-27

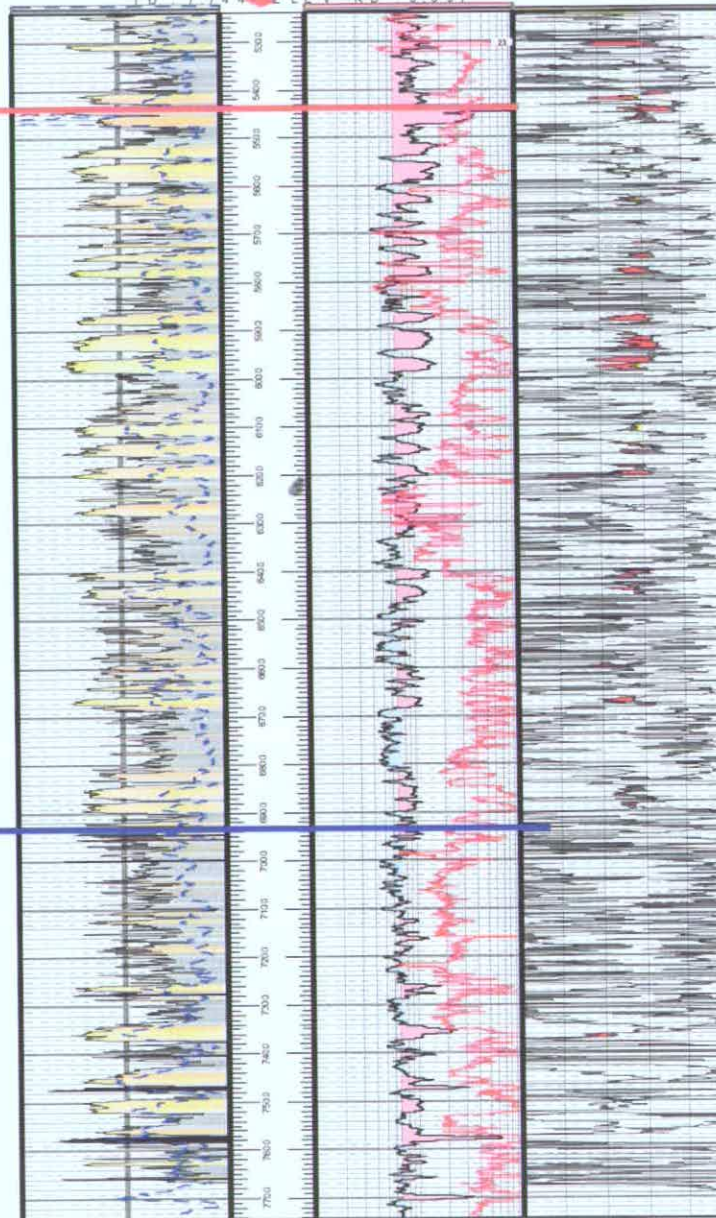
Pore Pressure Tests – All Sands Completed

↑ WILLIAMS FORK FORMATION

Top Gas Saturation

CAMEO FM TOP

R W F 4 3 3 - 2 0
T 6 S R 9 4 W S 2 0
T D 7 7 4 4 F L E V K B 5 3 9 7



Reservoir Pressure Results
(Every sand tested that was completed)

- 2,516 psi – No Depletion
- 2,520 psi – No Depletion
- 2,522 psi – No Depletion
- 2,580 psi – No Depletion
- 2,597 psi – No Depletion
- 3,226 psi – No Depletion
- 3,297 psi – No Depletion
- 3,336 psi – No Depletion
- 2,931 psi – No Depletion
- 3,428 psi – No Depletion
- 1,987 psi – Partial Depletion
- 1,566 psi – Partial Depletion
- 3,242 psi – No Depletion
- 3,263 psi – No Depletion
- 2,793 psi – Partial Depletion
- 3,232 psi – No Depletion
- 3,020 psi – No Depletion
- 3,531 psi – No Depletion
- Bad Test
- 4,104 psi – No Depletion
- 4,050 psi – No Depletion
- 4,123 psi – No Depletion
- 4,141 psi – No Depletion
- 4,534 psi – No Depletion
- 4,788 psi – No Depletion
- 4,813 psi – No Depletion
- 5,110 psi – No Depletion
- 5,234 psi – No Depletion
- 4,905 psi – No Depletion



ROLLINS MEMBER

Exhibit: C-5

Docket No.: 0710-SP-27

Cause No.: 510

Pore Pressure Tests – One Sand Per Frac Stage

RWF 534-20
T6S R94W S20
TD: 7,770 ELEV. KB: 5,355

Reservoir Pressure Results

(One sand per frac interval
– sand chosen to be most correlative to offset wells)

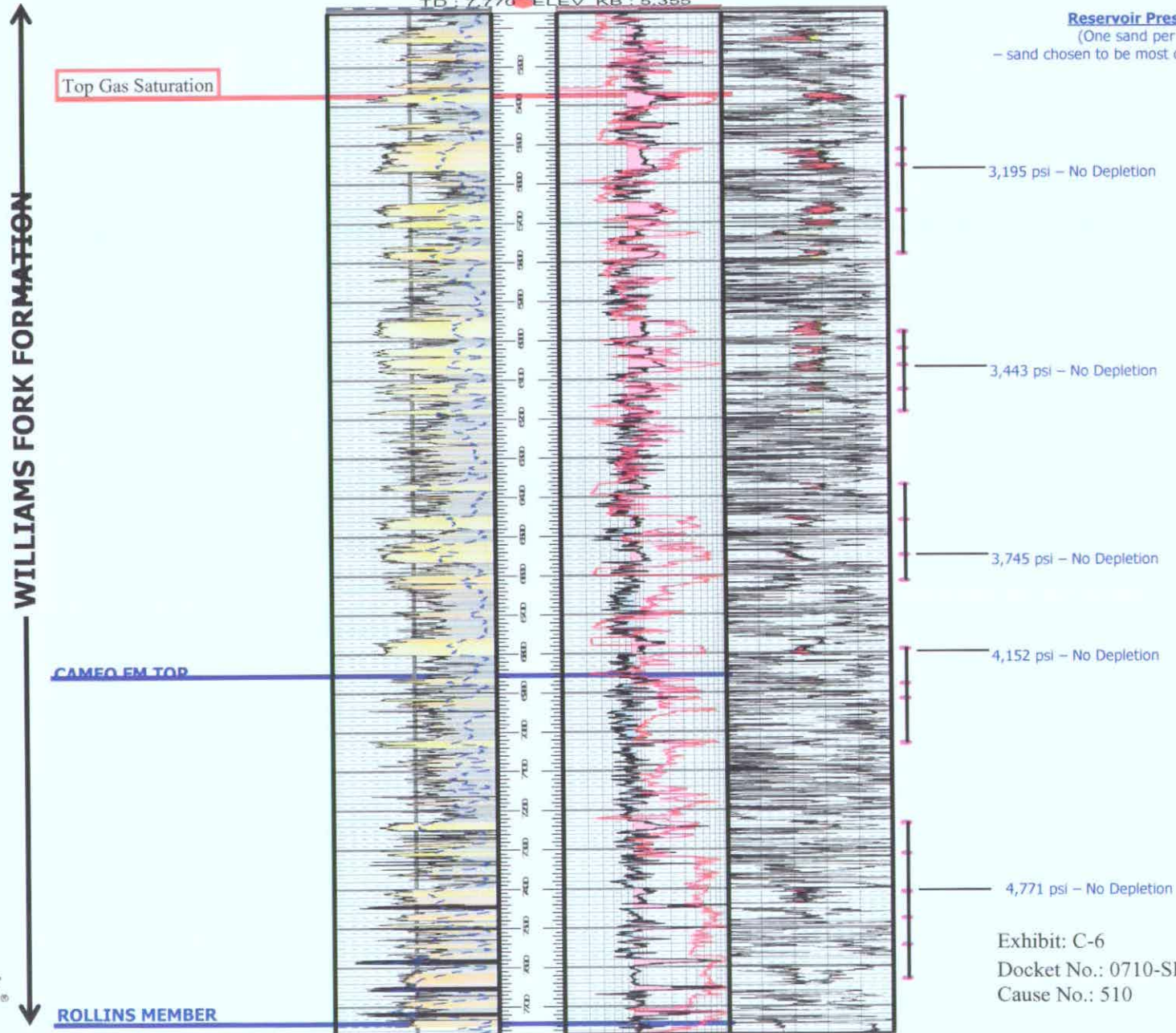


Exhibit: C-6
Docket No.: 0710-SP-27
Cause No.: 510

Rulison Field – 10-acre Offset Examples

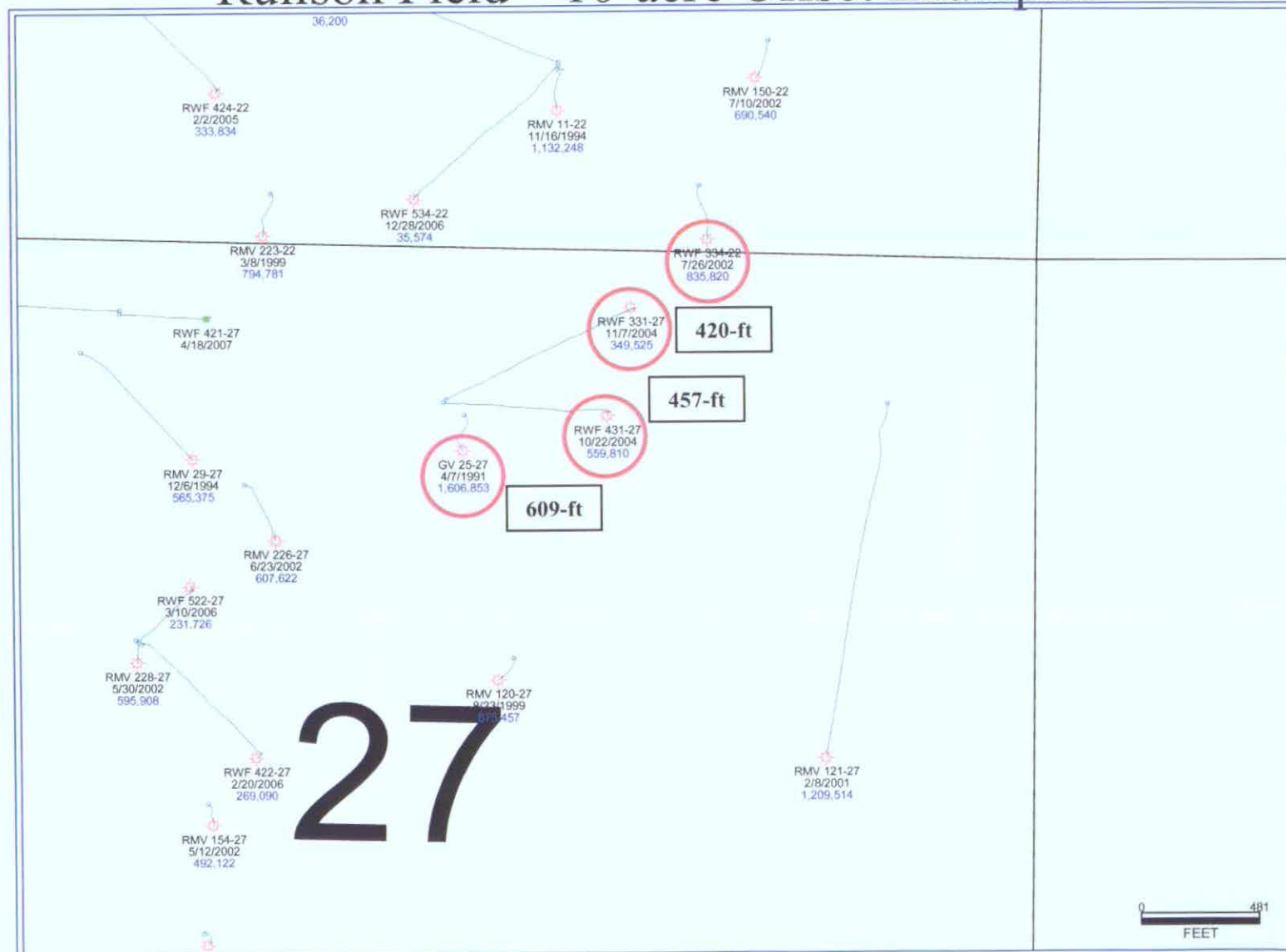


Exhibit: C-9
Docket No.: 0710-SP-27
Cause No.: 510

**Rulison Field 4-well Example (Sec 27-6S-94W)
10-acre Offsetting Production**

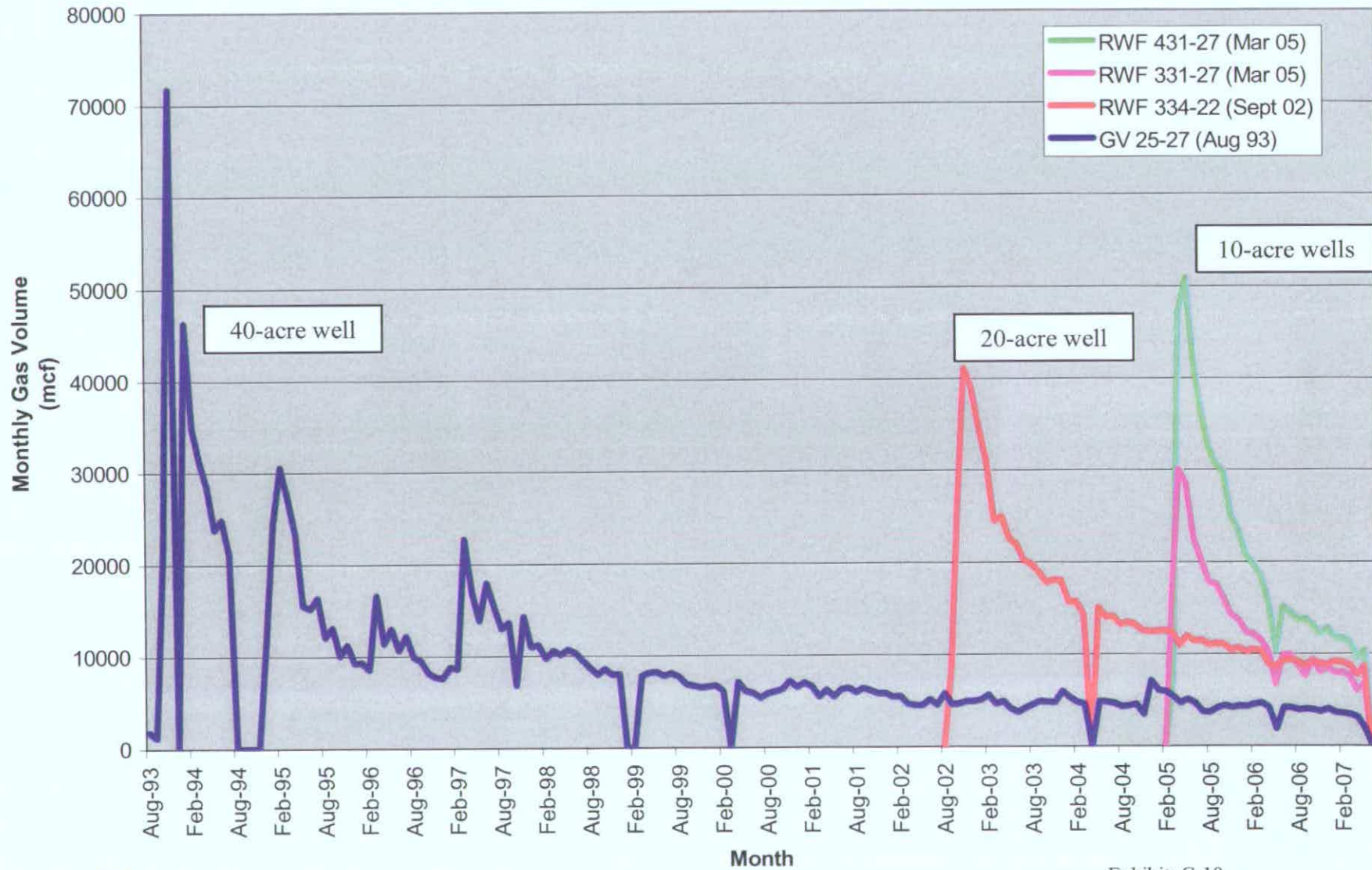


Exhibit: C-10
Docket No.: 0710-SP-27
Cause No.: 510

Grand Valley Field Average Monthly Production Comparison

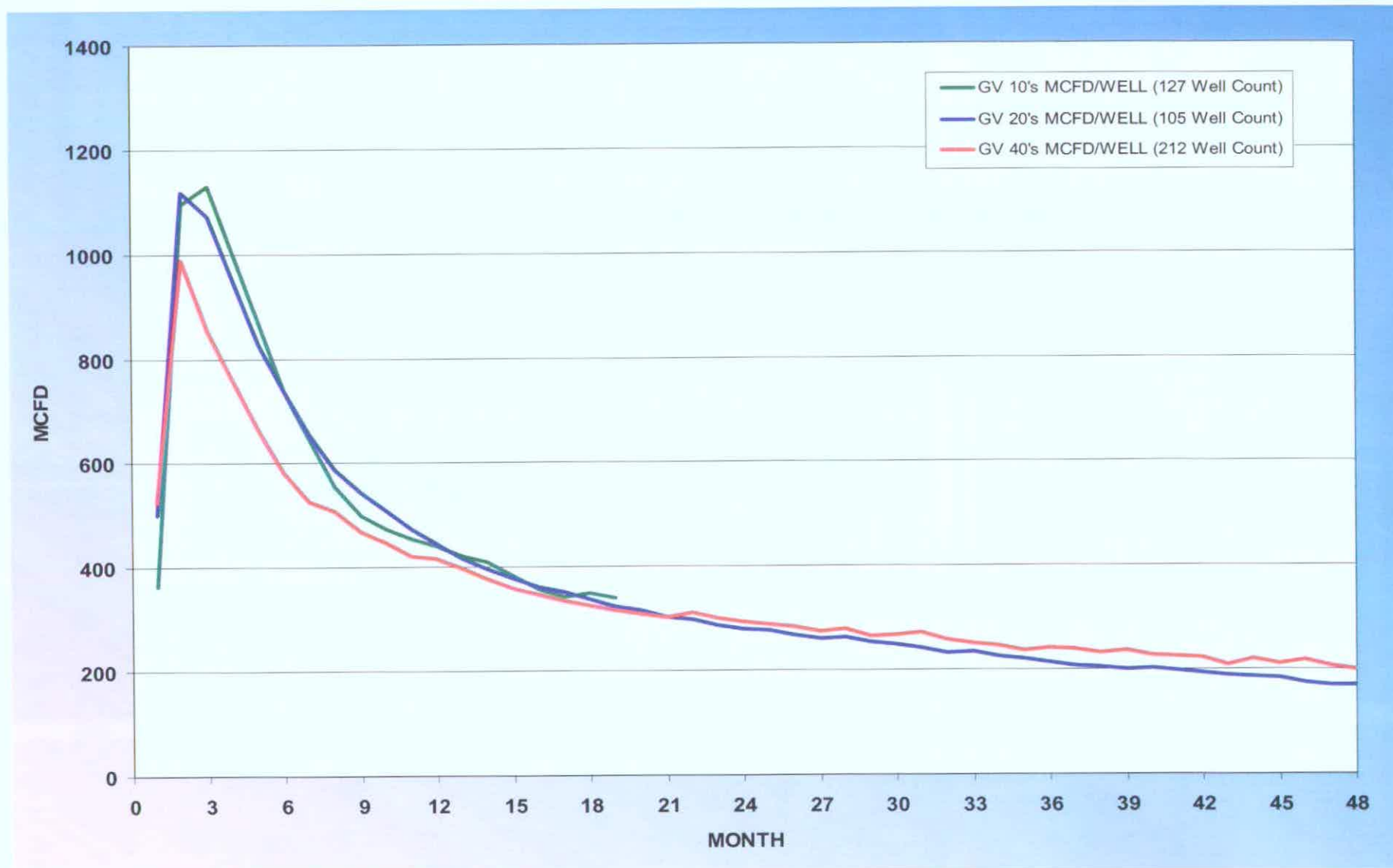


Exhibit: C-11

Docket No.: 0710-SP-27

Cause No.: 510

Parachute Field Average Monthly Production Comparison

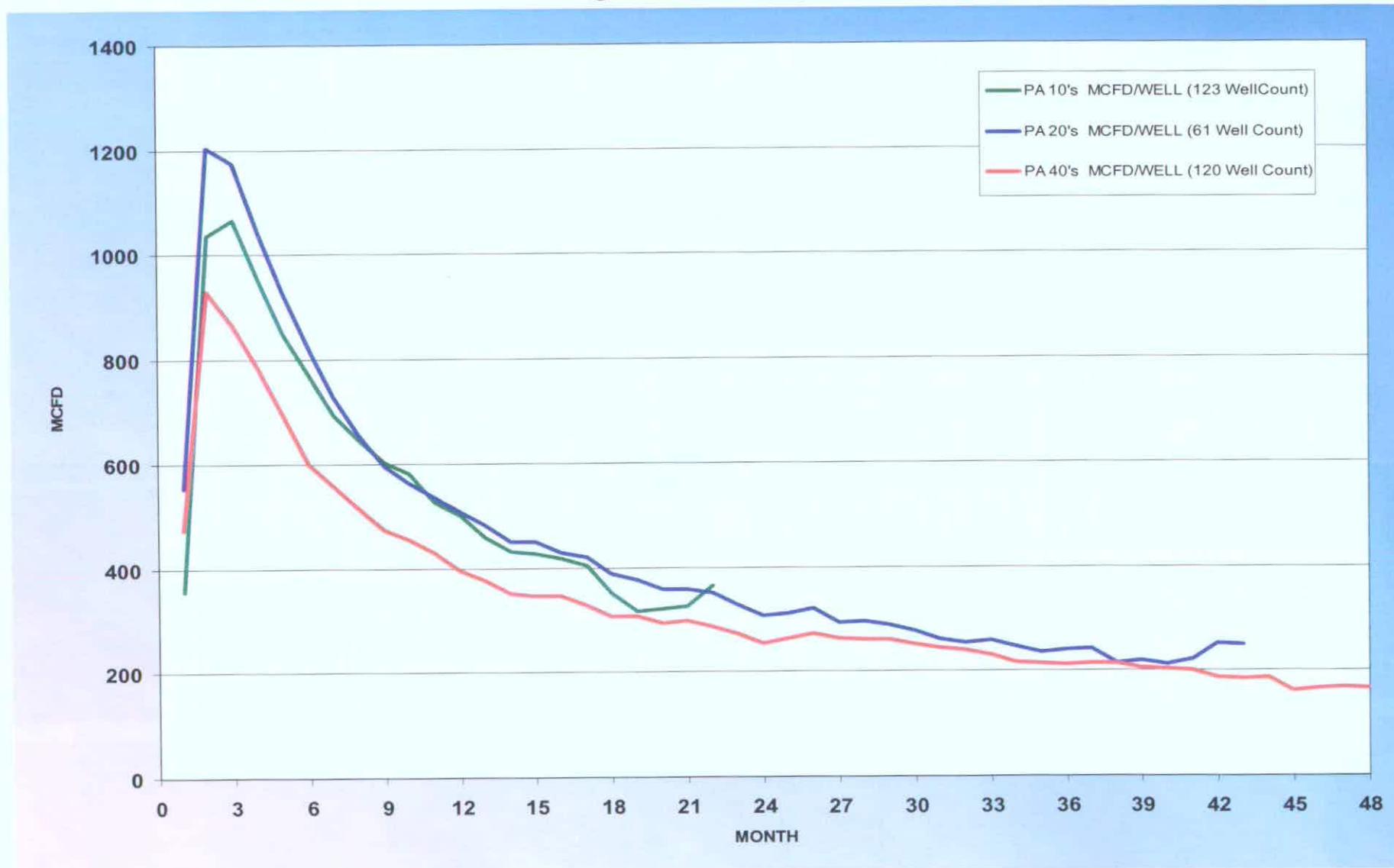


Exhibit: C-12

Docket No.: 0710-SP-27

Cause No.: 510

Rulison Field Average Monthly Production Comparison

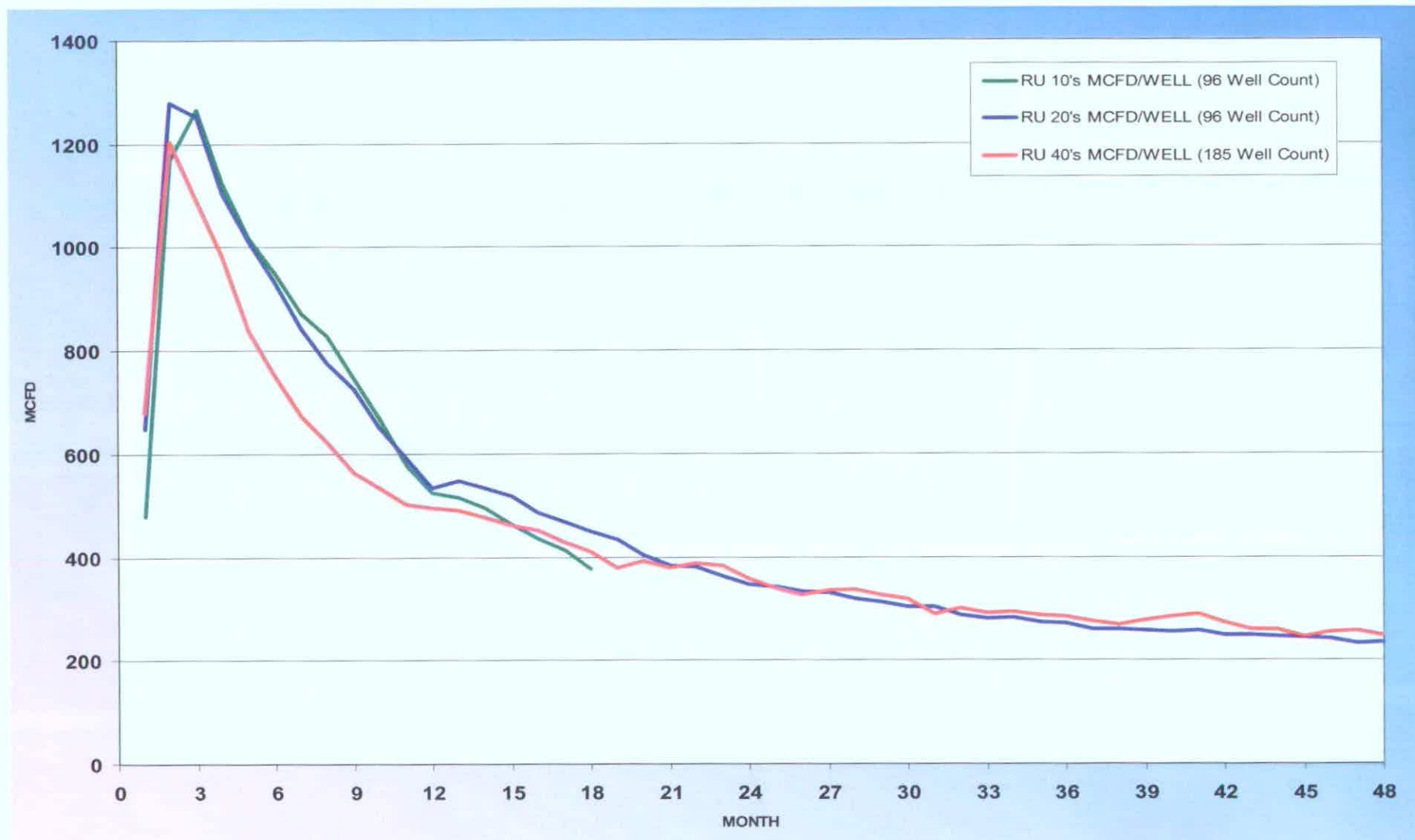


Exhibit: C-13

Docket No.: 0710-SP-27

Cause No.: 510

Type Log for the Mesaverde Group,
South Grand Valley Field Area, Garfield County, Colorado

SG 343-27
TTS 1986/1/5/27
S 2426' 5.037
ELEV 148' 5.037
TD 5,100

Tertiary

Wasatch Fm.

Upper Cretaceous

MESAVERDE GROUP

WILLIAMS FORK FORMATION

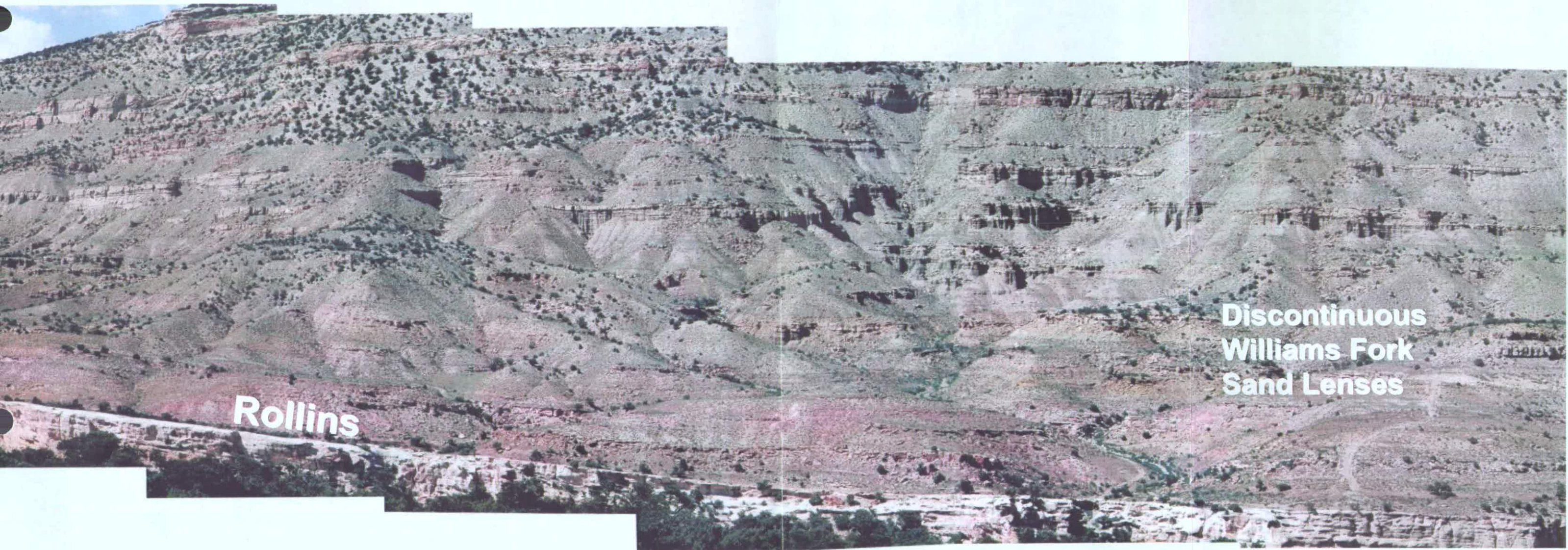
Top Gas Saturation

CAMEO COALS

ROLLINS MEMBER

Exhibit B-2
Cause No. 510
Docket No. 0710-SP-27

Mesaverde Outcrop, Coal Canyon Near Cameo, Colorado

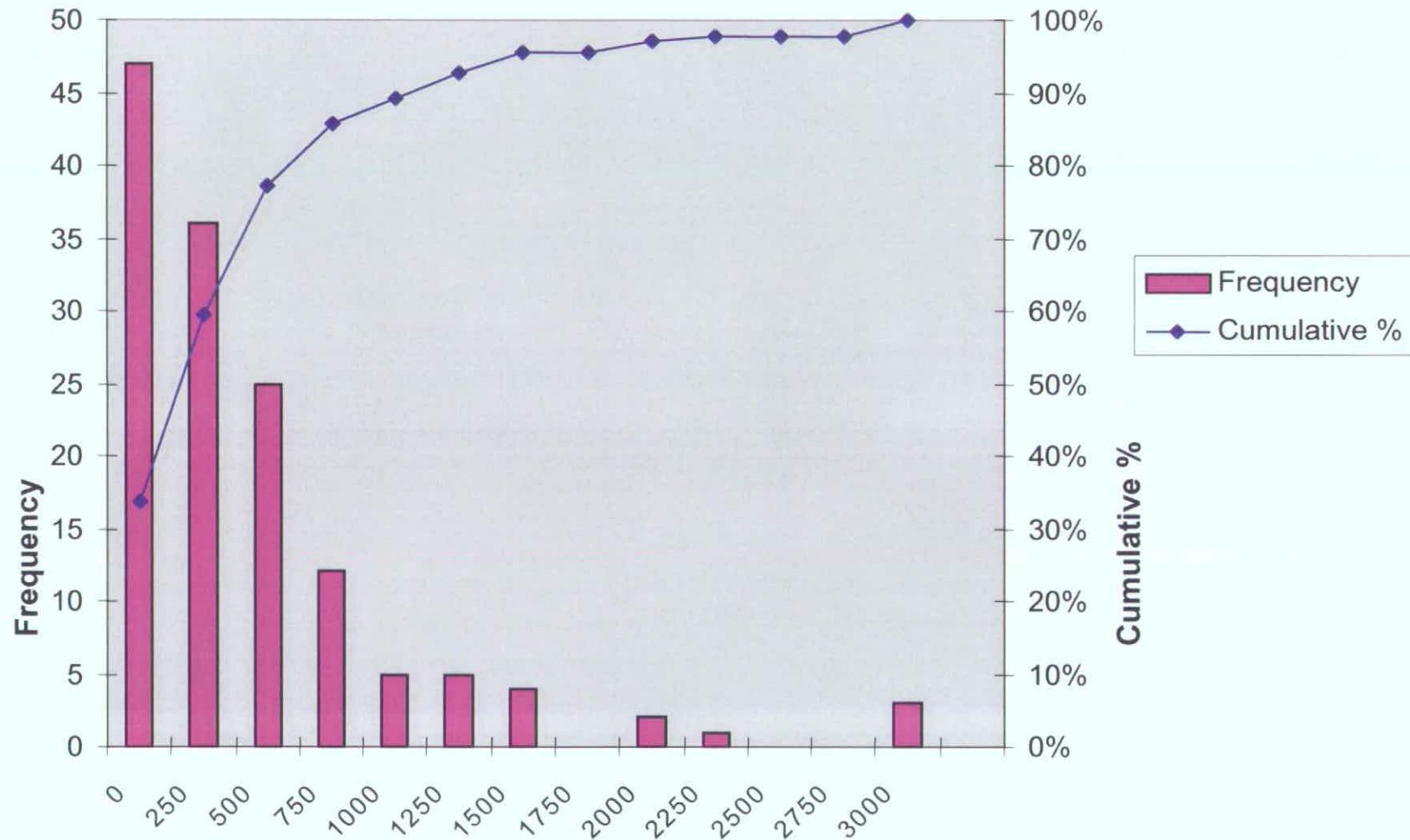


Rollins

Discontinuous
Williams Fork
Sand Lenses

- Approximately 24 miles southwest of Grand Valley Field, very similar lower Williams Fork section to that producing in Grand Valley, Parachute, and Rulison Fields
- Outcrop study of excellent exposures near Cameo, Colorado was undertaken to gather data on sand body extents

Williams Fork Outcrop Sand Body Sizes



Average Extents of 137 Sand Bodies=682 ft

Exhibit B-4
Cause No. 510
Docket No. 0710-SP-27

B

SG 542-34
T7S R96W S34
12/23/2006
ELEV_KB : 5,077
TD : 4,996

322 ft.

SG 442-34
T7S R96W S34
12/16/2006
ELEV_KB : 5,077
TD : 5,160

B'

SG 342-34
T7S R96W S34
12/8/2006
ELEV_KB : 5,077
TD : 5,146

327 ft.

Williams Fork Formation

Cameo Coal Interval

Top of Gas

Top of Gas

Rollins Sandstone

Rollins Sandstone

A

SG 343-27
T7S R96W S27
5/24/2006
ELEV_KB : 5,037
TD : 5,100

306 ft.

SG 443-27
T7S R96W S27
5/31/2006
ELEV_KB : 5,036
TD : 5,140

342 ft.

A'

SG 543-27
T7S R96W S27
6/6/2006
ELEV_KB : 5,036
TD : 5,241

Williams Fork Formation

Cameo Coal Interval

Top of Gas

Top of Gas

Rollins Sandstone

Rollins Sandstone

Williams Fork Sandstone Bodies With Hypothetical 10-acre wells

Western Margin of Piceance Basin - Mesaverde Outcrop in Coal Canyon (near Cameo, Colorado)

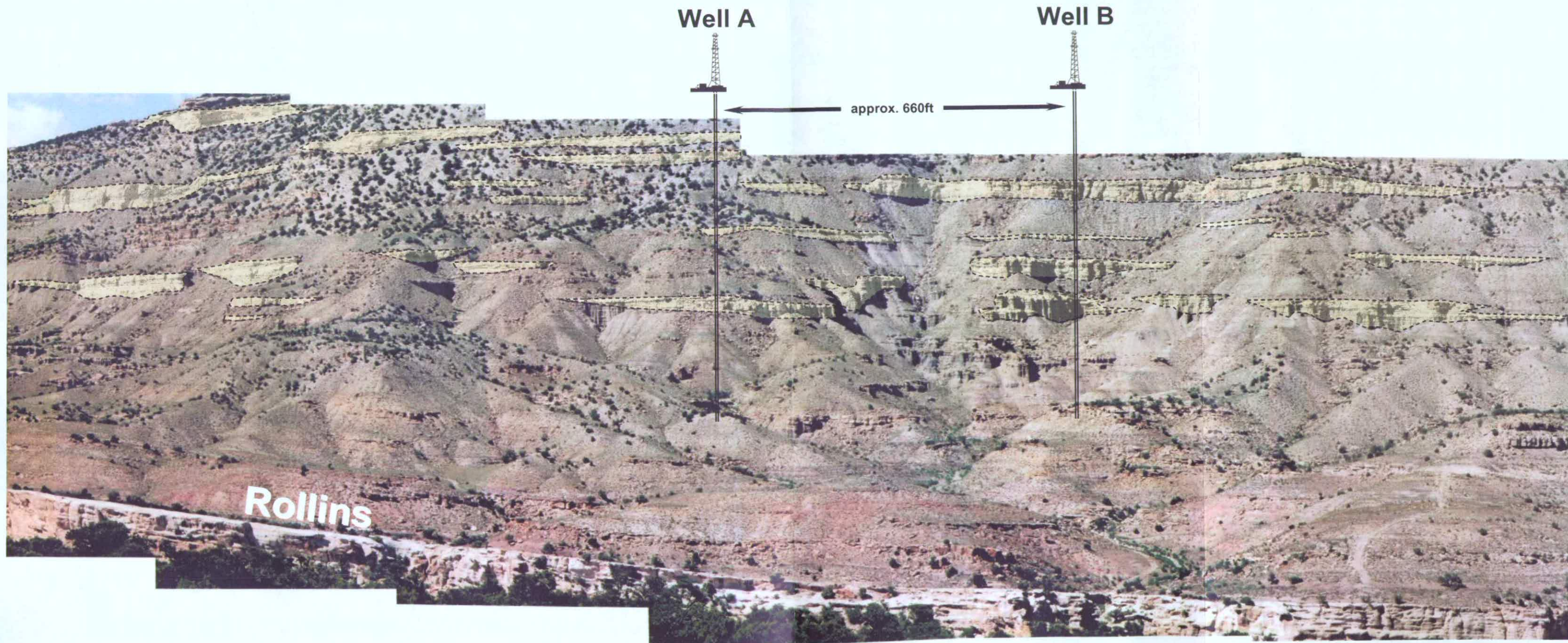


Exhibit B-8
Cause No. 510
Docket No. 0710-SP-27