



**Antero Resources Corporation**  
Piceance Basin  
Garfield County, CO

Exhibit: L1  
Cause No. 191  
Docket No. 0606-SP-32

01754664  
*191-25*

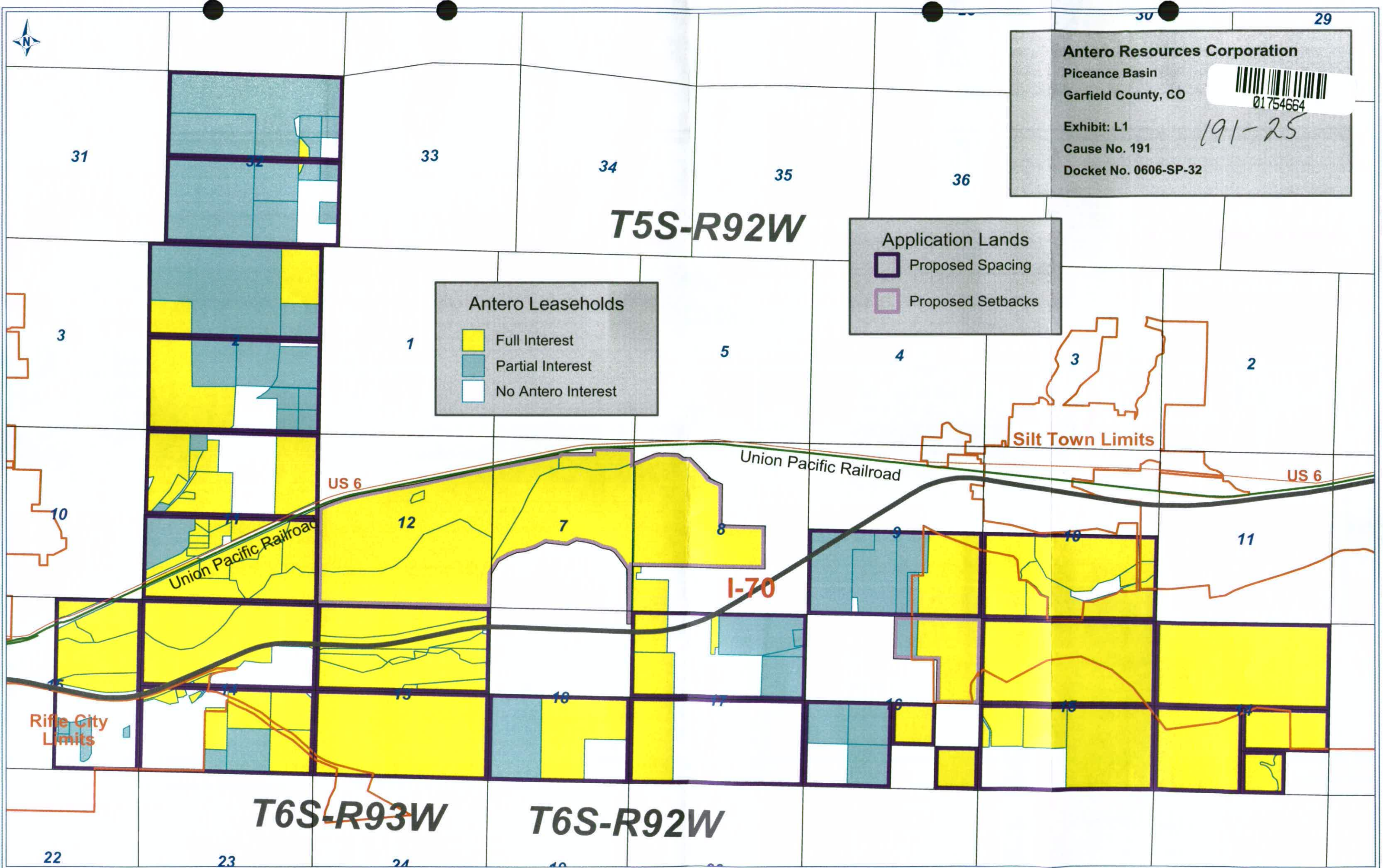
**T5S-R92W**

**Antero Leaseholds**

- Full Interest
- Partial Interest
- No Antero Interest

**Application Lands**

- Proposed Spacing
- Proposed Setbacks



**T6S-R93W**

**T6S-R92W**



**Docket No. 0606-SP-32**

### Proposed Setbacks

**T5S-R92W**

## Silt Town Limits

## Rifle City Limits

**T6S-R93W**

**T6S-R92W**



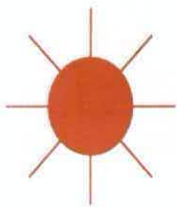




ANTERO RESOURCES CORP  
VALLEY FARMS B

1

IP\_GAS : 2,788 MCFD



TD : 8,635

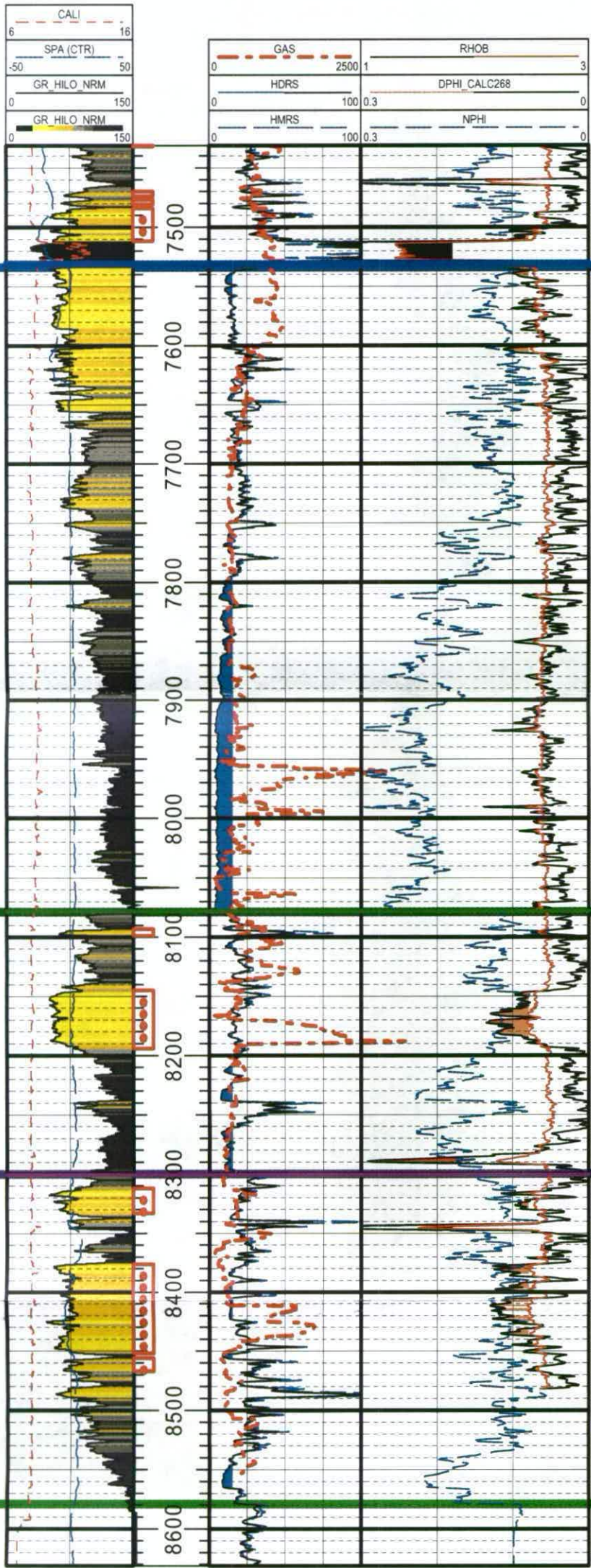
ELEV\_GR : 5,495

COMP\_DATE : 2/11/2006  
ProdFM : Williams Fork-Illes

Mesaverde Group

Illes Formation

Mancos Shale



Rollins Sandstone

Cozzette Member

Corcoran Member

Antero Resources Corporation

Exhibit G-2  
Cause No. 191  
Docket No. 0606-SP-32  
Piceance Basin, Colorado  
Illes Formation Type Log



W

ANTERO RESOURCES CORP  
NORTH BANK E  
1ST2



TD : 9,090  
ELEV\_KB : 5,387

ANTERO RESOURCES CORP  
ISLAND PARK B  
2

IP\_GAS : 748 MCFD



TD : 8,977  
ELEV\_GR : 5,376

ANTERO RESOURCES CORP  
VALLEY FARMS B  
1

IP\_GAS : 2,788 MCFD



TD : 8,635  
ELEV\_GR : 5,495

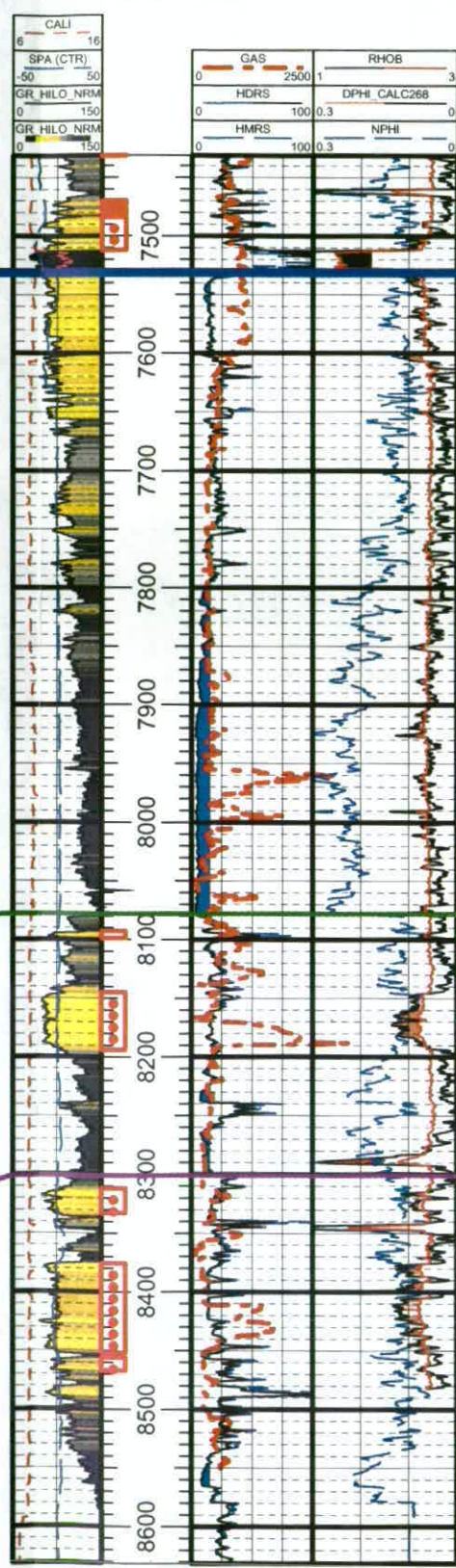
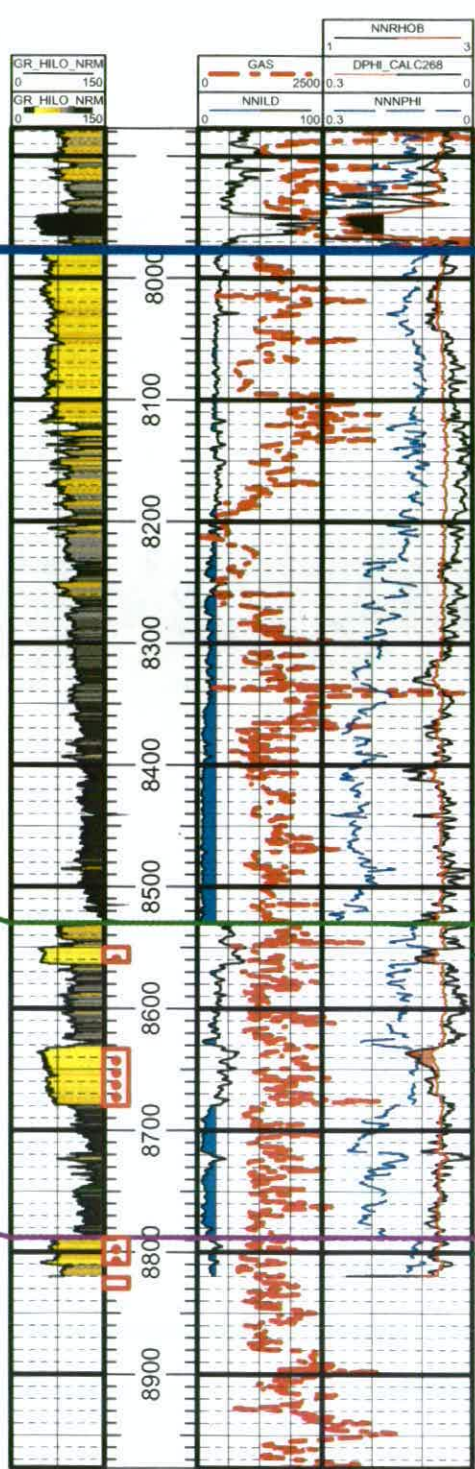
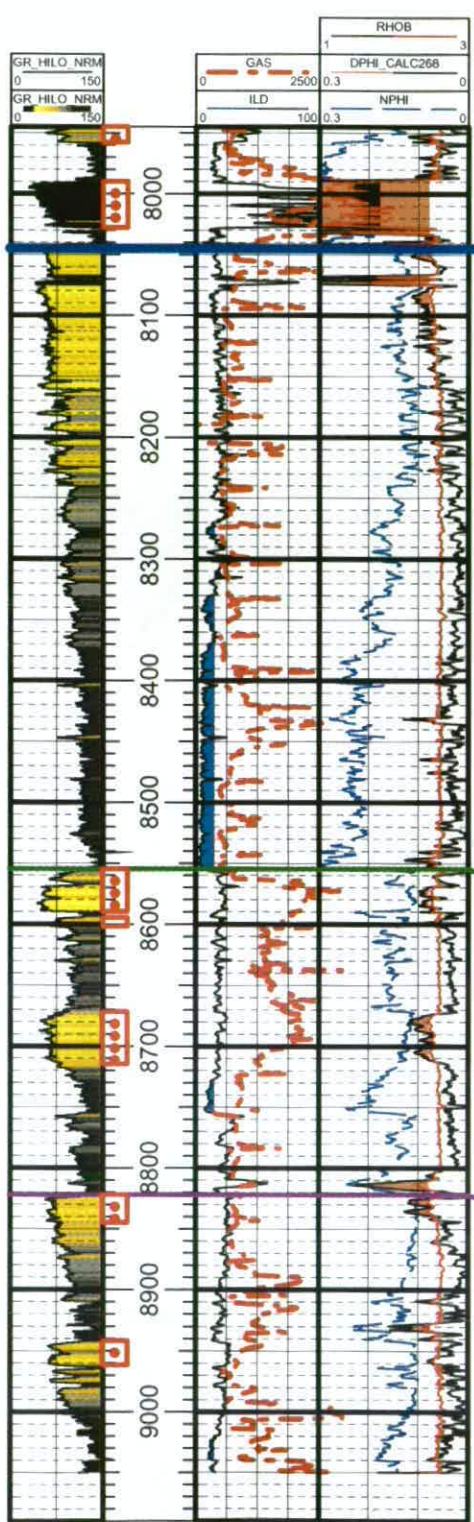
E

Antero Resources Corporation  
Piceance Basin  
Garfield County, CO  
Exhibit: G-3  
Cause No. 191  
Docket No. 0606-SP-32

COMP\_DATE : 12/9/2005  
ProdFM : WMFK

COMP\_DATE : 2/11/2006  
ProdFM : Williams Fork-Illis

Illes Formation



81 mcf  
15 bwpd  
2 bwpd

Rollins Sandstone

119 Mcfd

109 Mcfd

339 Mcfd

0 mcf  
1 bwpd

689 mcf  
202 bwpd

Unknown Amount  
From Corcoran  
due to sand plug

Cozzette Member

Corcoran Member