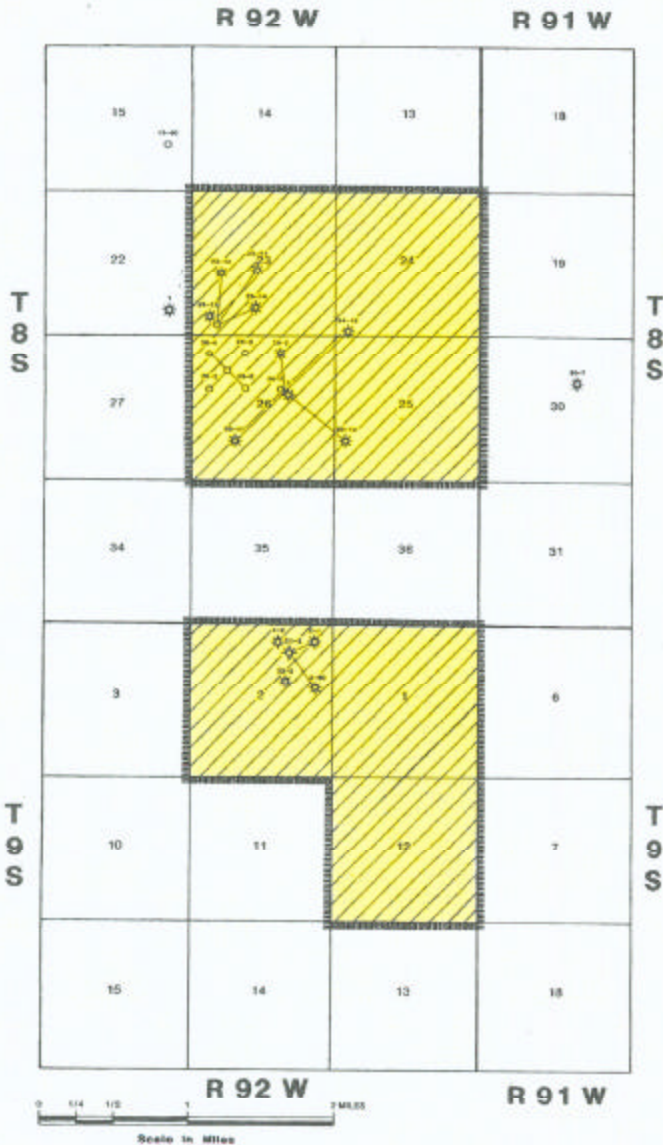


529-1



INDEX MAP



APPLICATION AREA



LARAMIE ENERGY, LLC BLM LEASES

Exhibit No. 1

Laramie Energy, LLC

P. Kacerguis

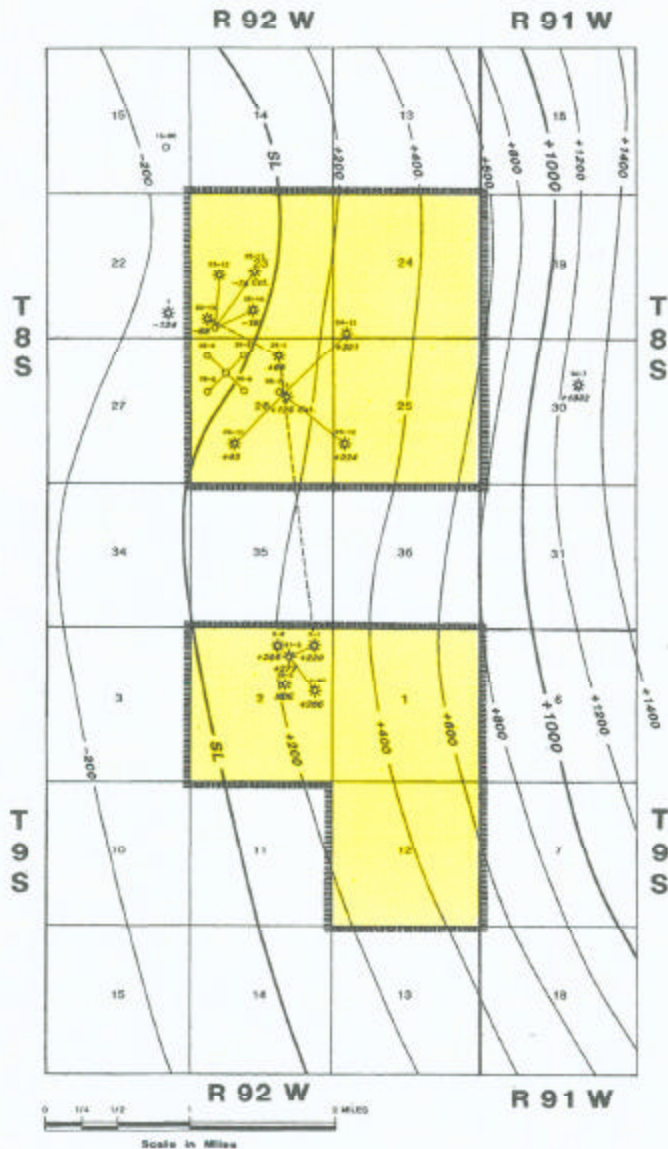
Cause No. 529

Docket No. 0611-AW-28

Land Map

Mesa County, Colorado  
Hell's Gulch Area

529-1



INDEX MAP



APPLICATION AREA



LARAMIE ENERGY, LLC LEASEHOLD



NOT DEEP ENOUGH

Exhibit No. 2

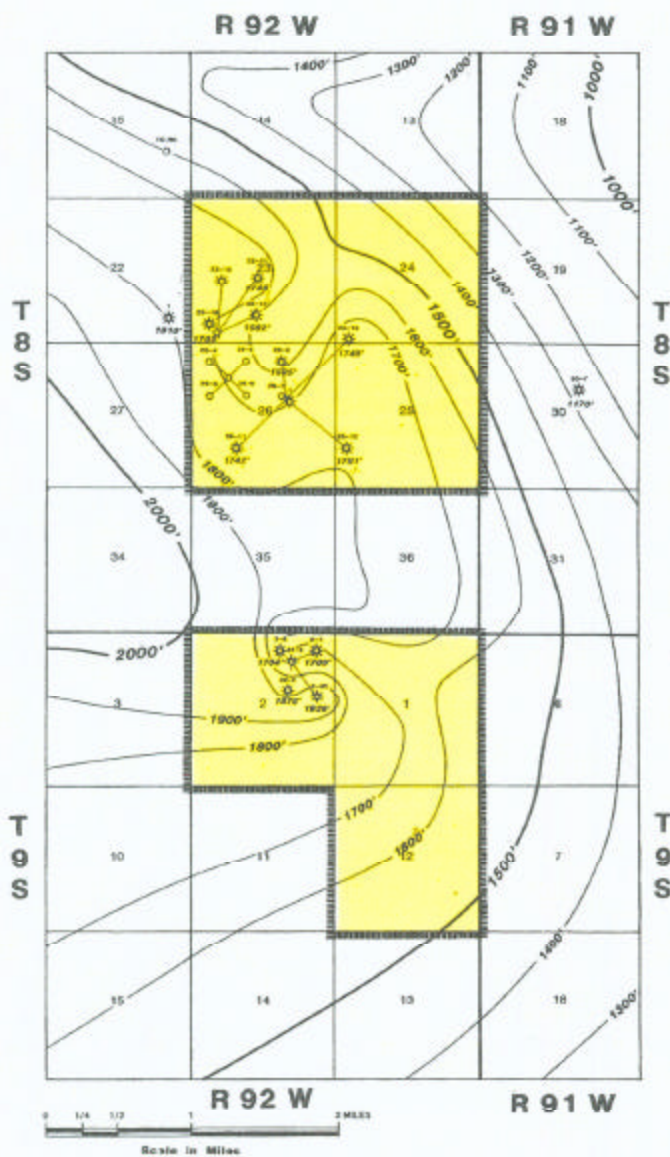
Laramie Energy, LLC

T. D. Kirkpatrick

Cause No. 529  
Docket No. 0611-AW-28

Structure Top Rollins Fm.  
C.I. = 200 Feet

Mesa County, Colorado  
Hell's Gulch Area



INDEX MAP



APPLICATION AREA



LARAMIE ENERGY, LLC LEASEHOLD

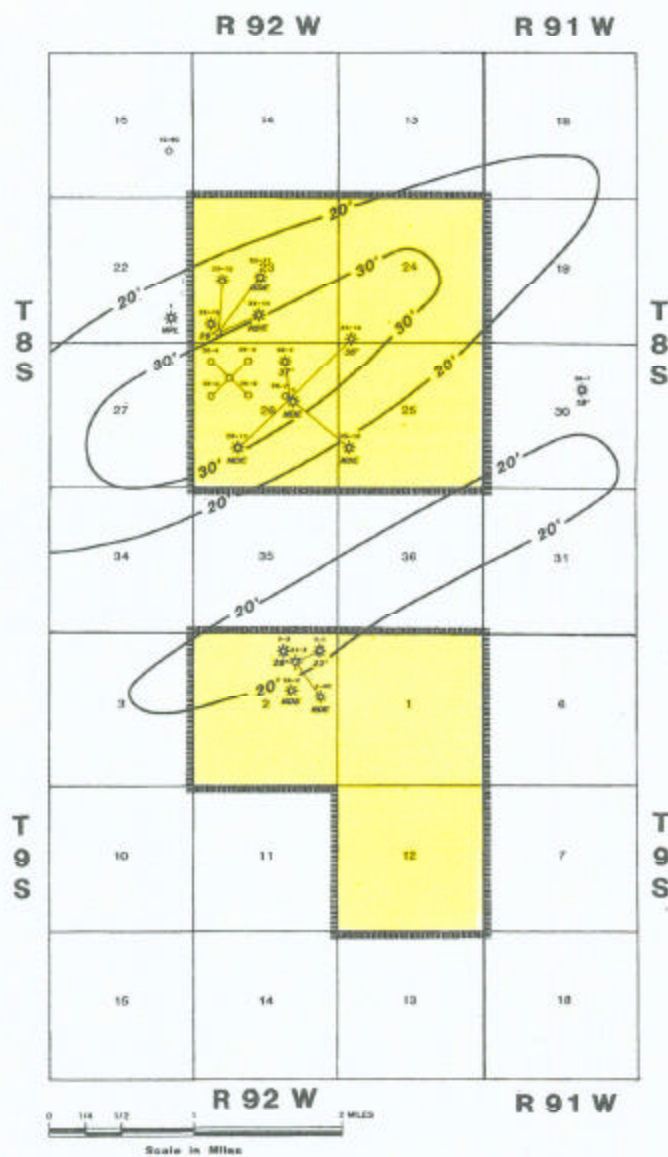
Exhibit No. 3

Laramie Energy, LLC

T. D. Kirkpatrick

Cause No. 529  
Docket No. 0611-AW-28  
Williams Fork Fm.  
Basin Centered  
Gas System  
Isopachs:  
Gas Saturated Interval  
C.I. = 100 Feet  
Mesa County, Colorado  
Hell's Gulch Area





**INDEX MAP**

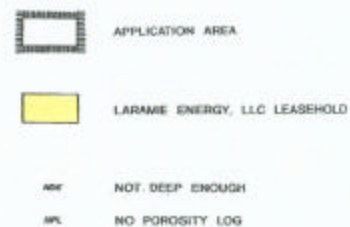
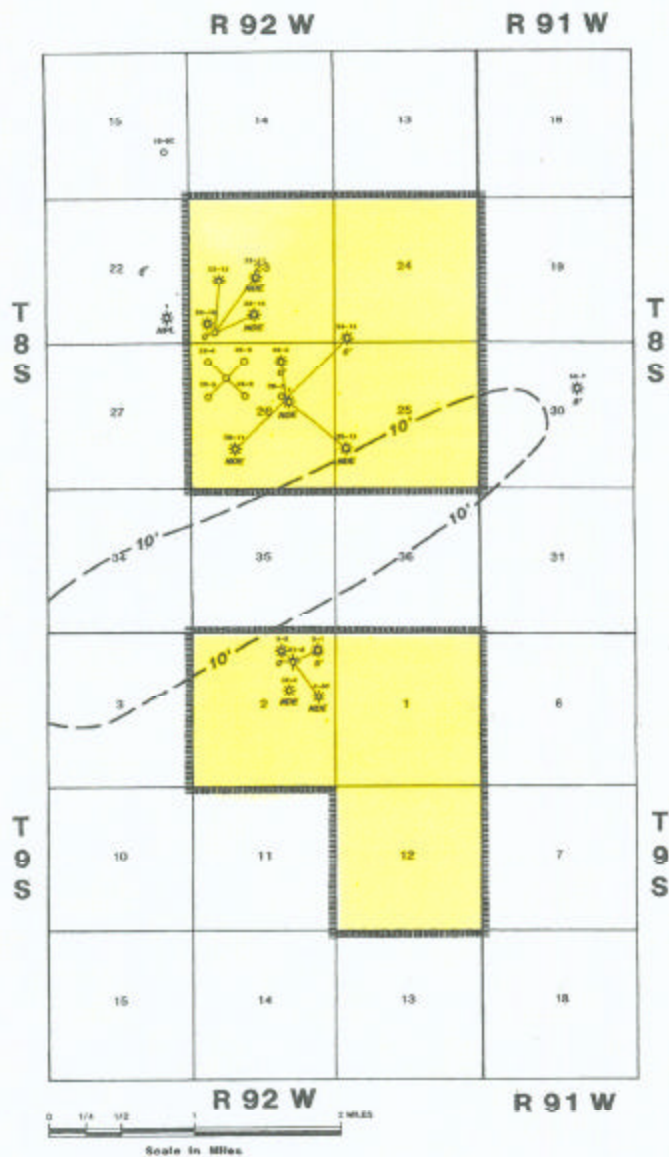


Exhibit No. 4	Cause No. 529 Docket No. 0611-AW-28
Laramie Energy, LLC	Lower Cozette Net Sand Isopach
T. D. Kirkpatrick	(Net: 575 API/6% Density Porosity) C.I. = 10 Feet
	Mesa County, Colorado Hell's Gulch Area



**INDEX MAP**

- APPLICATION AREA
- LARAMIE ENERGY, LLC LEASEHOLD
- NOT DEEP ENOUGH
- NO POROSITY LOG

Exhibit No. 5

Laramie Energy, LLC

T. D. Kirkpatrick

Cause No. 529  
Docket No. 0611-AW-28  
Upper Corcoran  
Net Sand Isopach  
Test: 1/2 API/0% Density Porosity  
C.I. = 10 Feet  
Mesa County, Colorado  
Hell's Gulch Area

