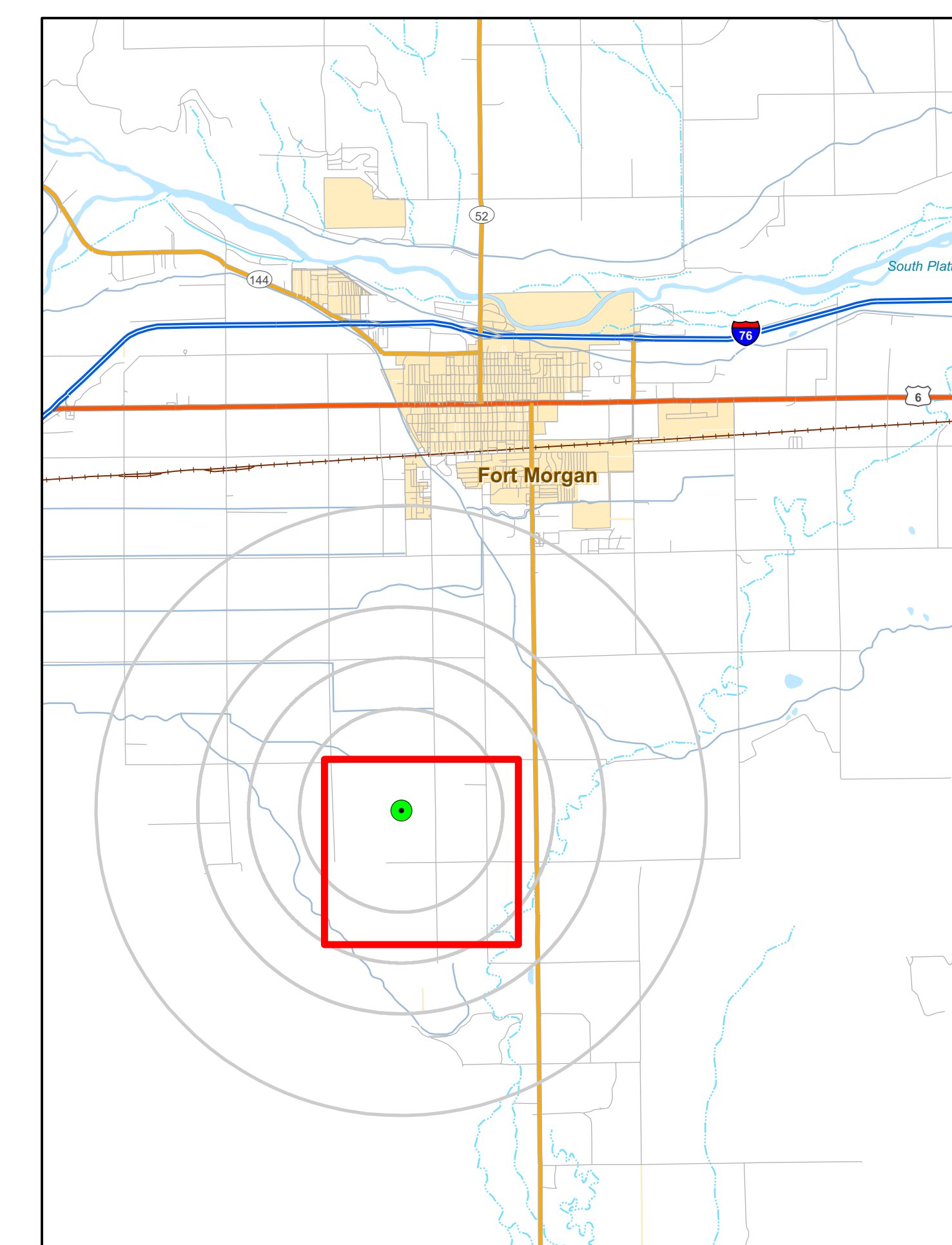
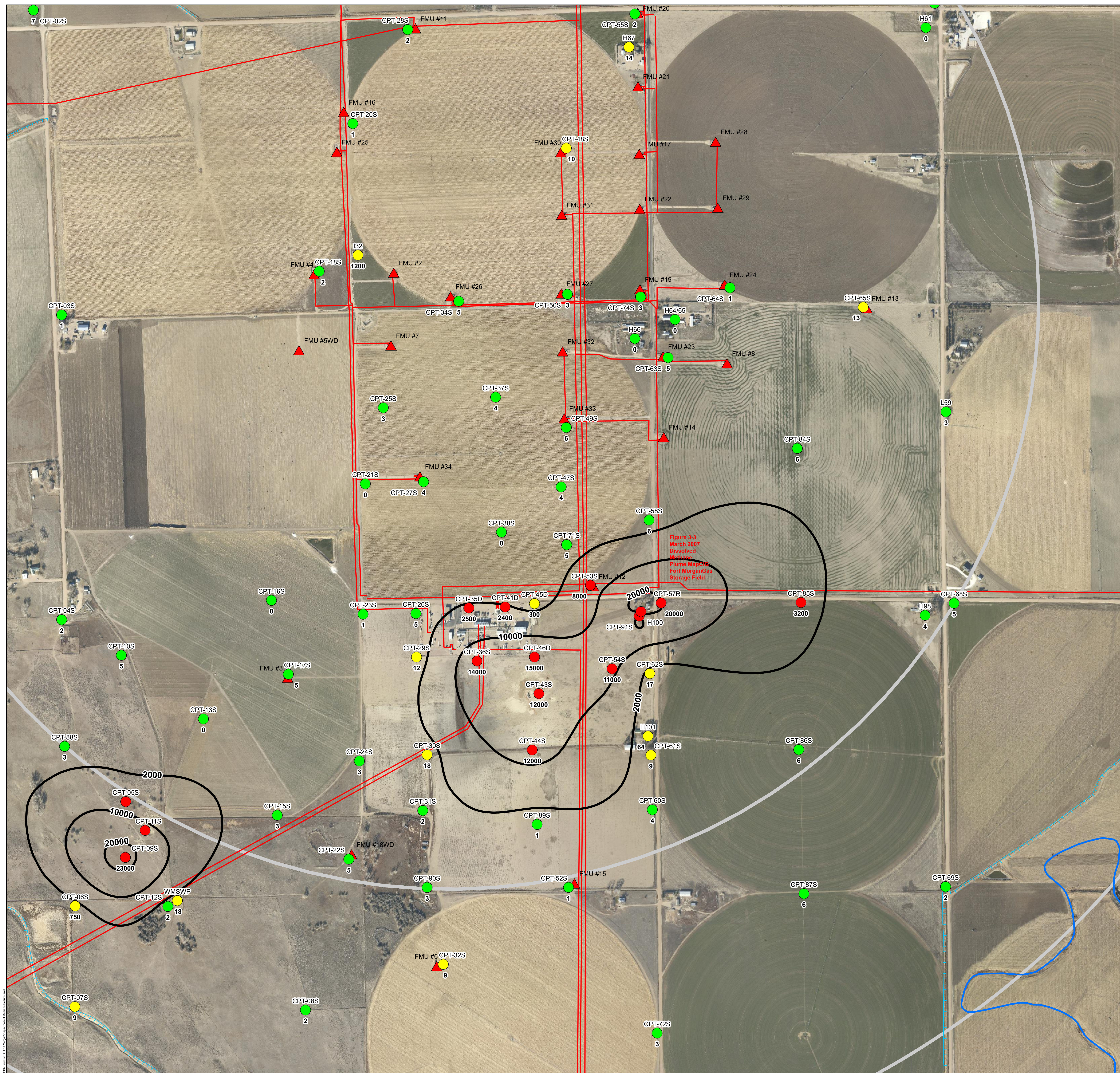


**Figure 3-1
Irrigation Well
Locations
CIG Fort Morgan
Gas Storage Field**



- Legend**
- Dissolved Methane Concentration**
- ≤ 6.7 ug/L (Background UTL)
 - > 6.7 ug/L and ≤ 2000 ug/L
 - > 2000 ug/L (COGCC Action Level)
- Dissolved Methane Isoconcentration Contour (ug/L)
- ▲ CIG Gas Storage Wells
- Natural Gas Pipeline (El Paso)
- Hydrologic Features (National Hydrography Dataset)
- Canal or Ditch
 - Connector
 - Stream or River
- Buffers 1, 1.5, and 2 miles from Gas Storage Well #26

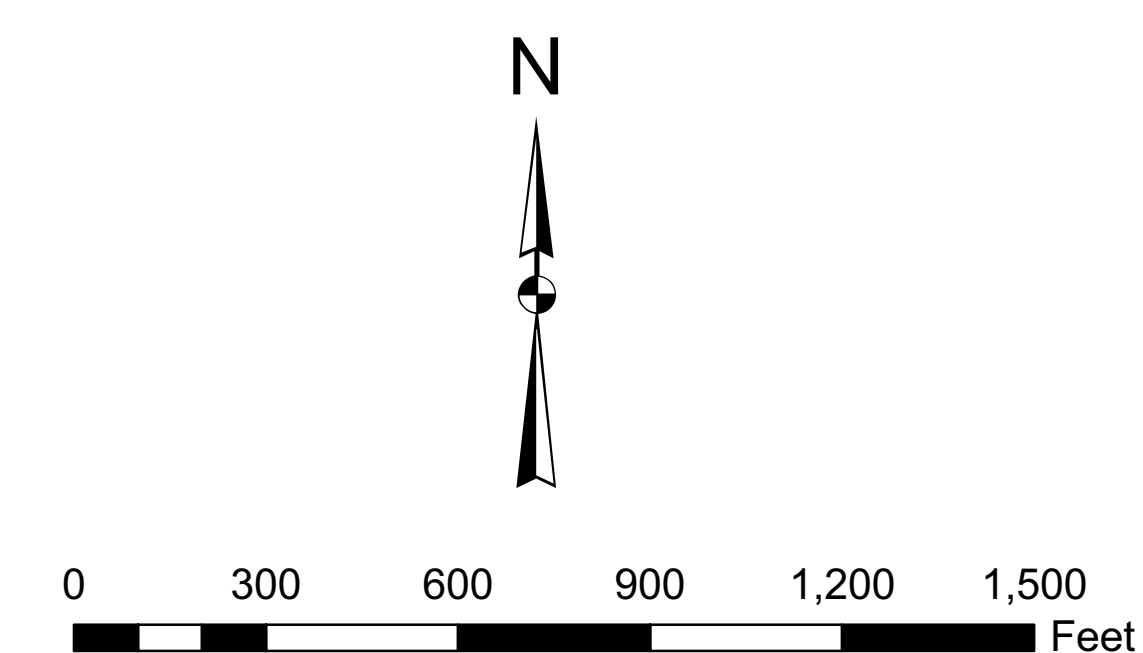
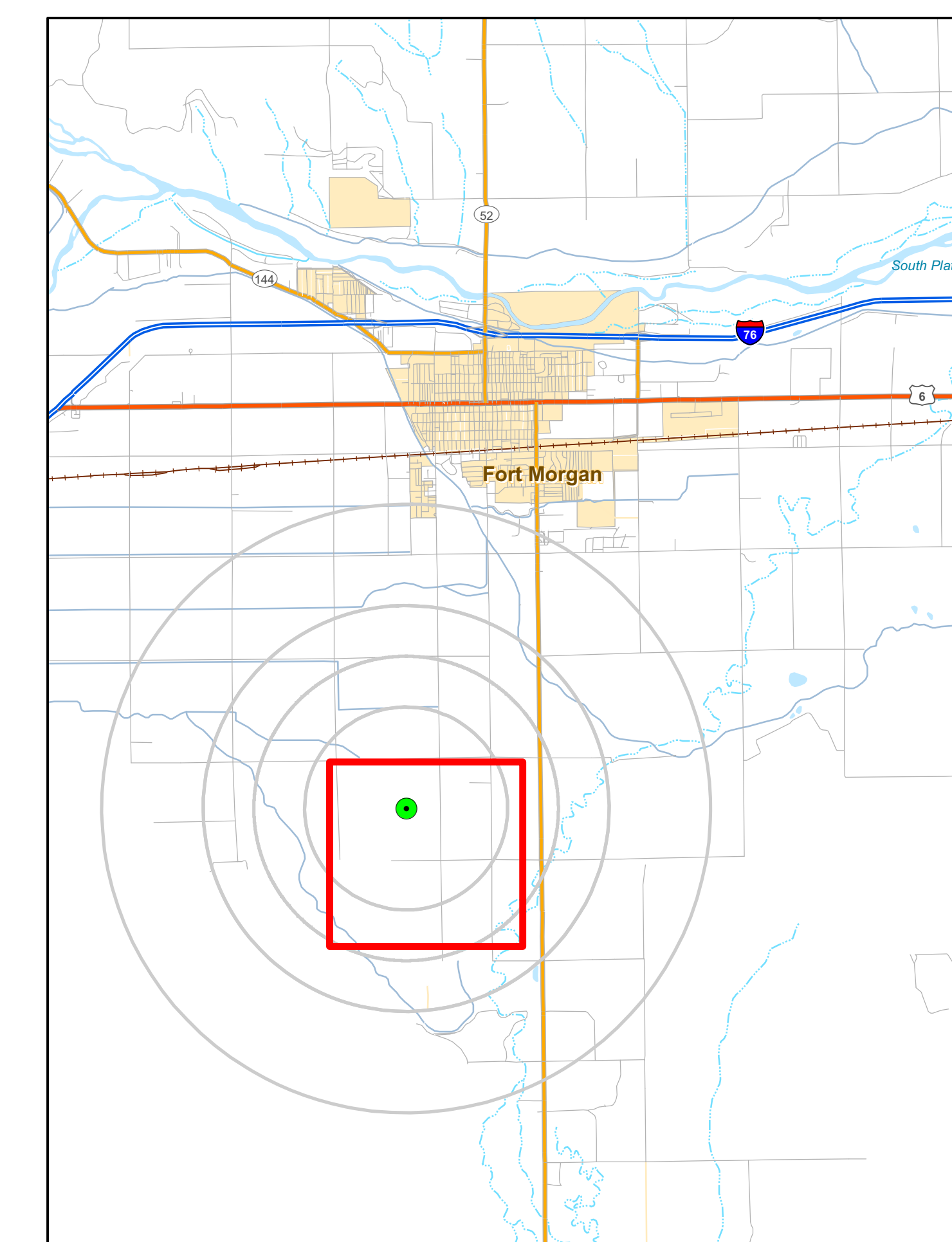


Figure 3-3
March 2007 Dissolved Methane
Plume Map
CIG Fort Morgan
Gas Storage Field



- Legend**
- Dissolved Methane Concentration**
- ≤ 6.7 ug/L (Background UTL)
 - > 6.7 ug/L and ≤ 2000 ug/L
 - > 2000 ug/L (COGCC Action Level)
- Dissolved Methane Isoconcentration Contour (ug/L)
- ▲ CIG Gas Storage Wells
- Natural Gas Pipeline (El Paso)
- Hydrologic Features (National Hydrography Dataset)
- Canal or Ditch
 - Connector
 - Stream or River
- Buffers 1, 1.5, and 2 miles from Gas Storage Well #26

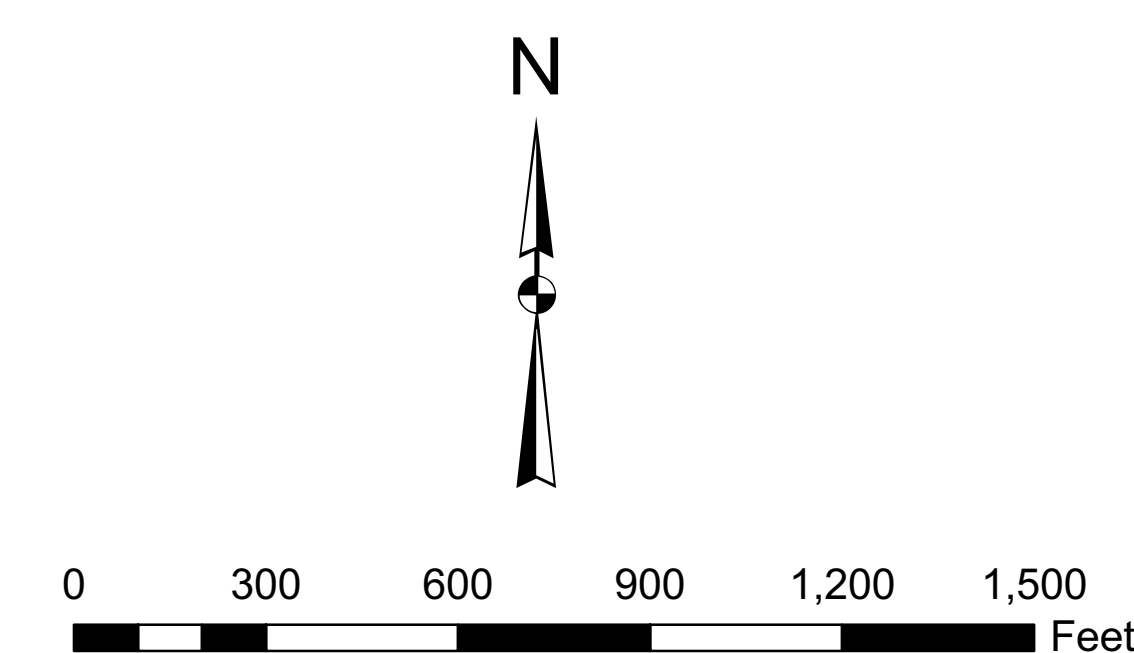
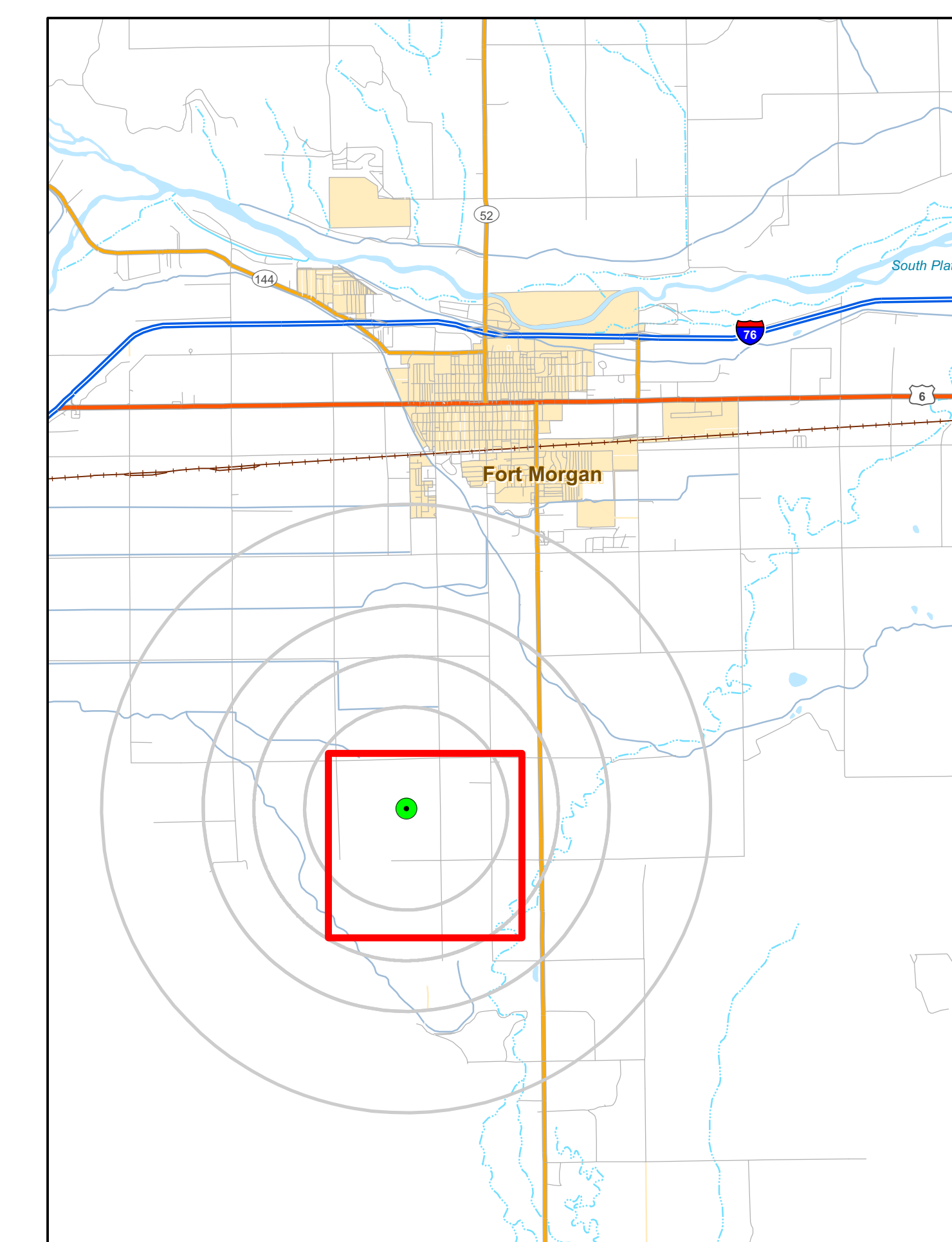


Figure 3-4
June 2007 Dissolved Methane
Plume Map
CIG Fort Morgan
Gas Storage Field



- Legend**
- Dissolved Methane Concentration**
- ≤ 6.7 ug/L (Background UTL)
 - > 6.7 ug/L and ≤ 2000 ug/L
 - > 2000 ug/L (COGCC Action Level)
- Dissolved Methane Isoconcentration Contour (ug/L)
- ▲ CIG Gas Storage Wells
- Natural Gas Pipeline (El Paso)
- Hydrologic Features (National Hydrography Dataset)
- Canal or Ditch
 - Connector
 - Stream or River
- Buffers 1, 1.5, and 2 miles from Gas Storage Well #26

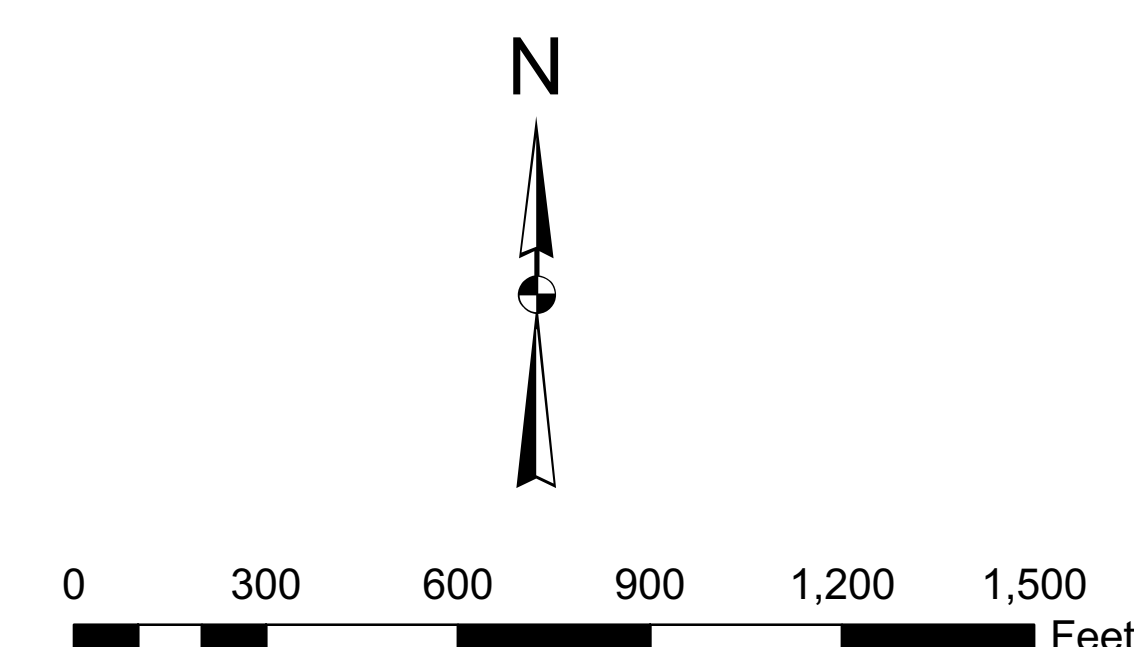


Figure 3-5
August 2007 Dissolved Methane
Plume Map
CIG Fort Morgan
Gas Storage Field

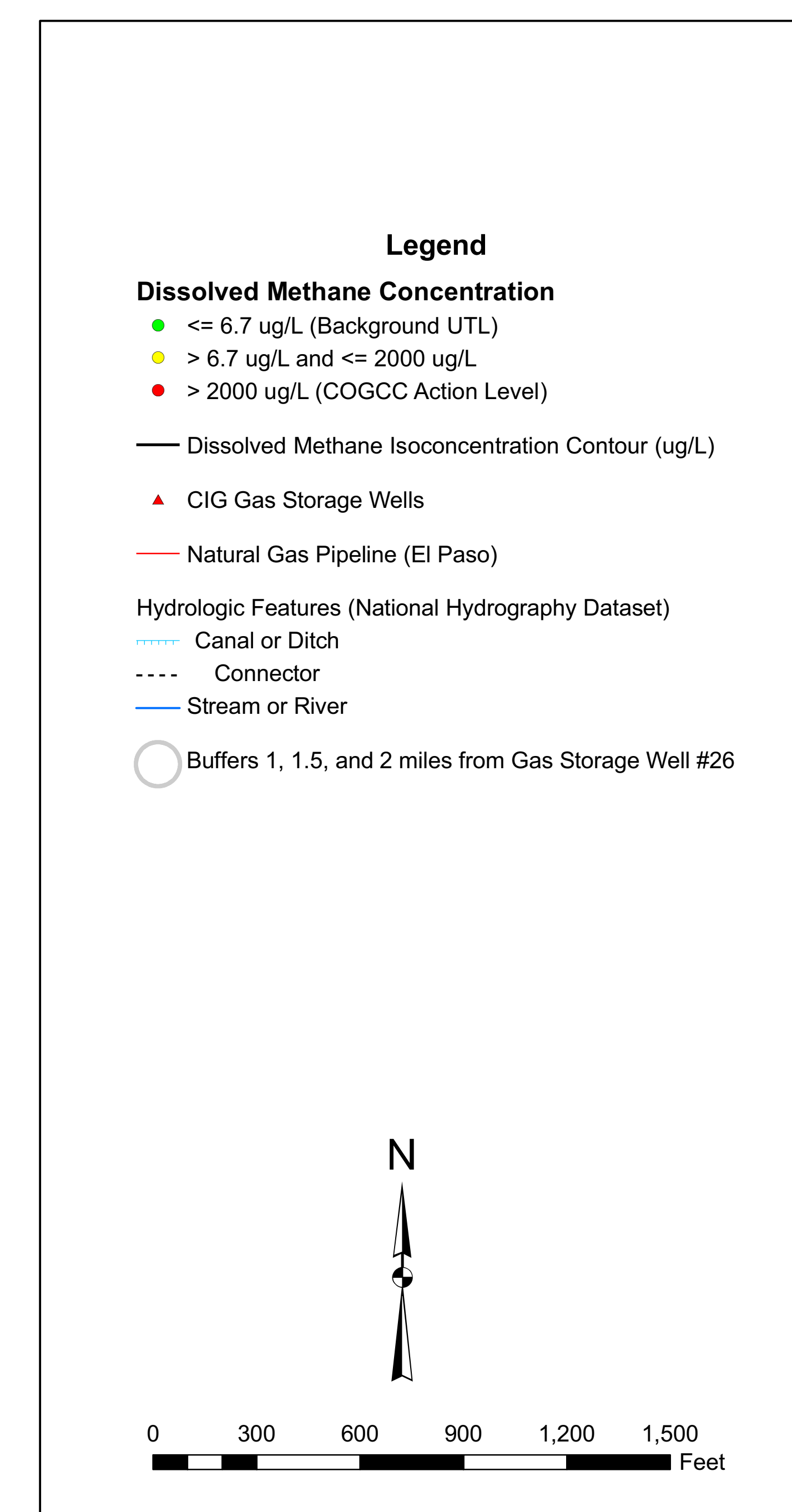
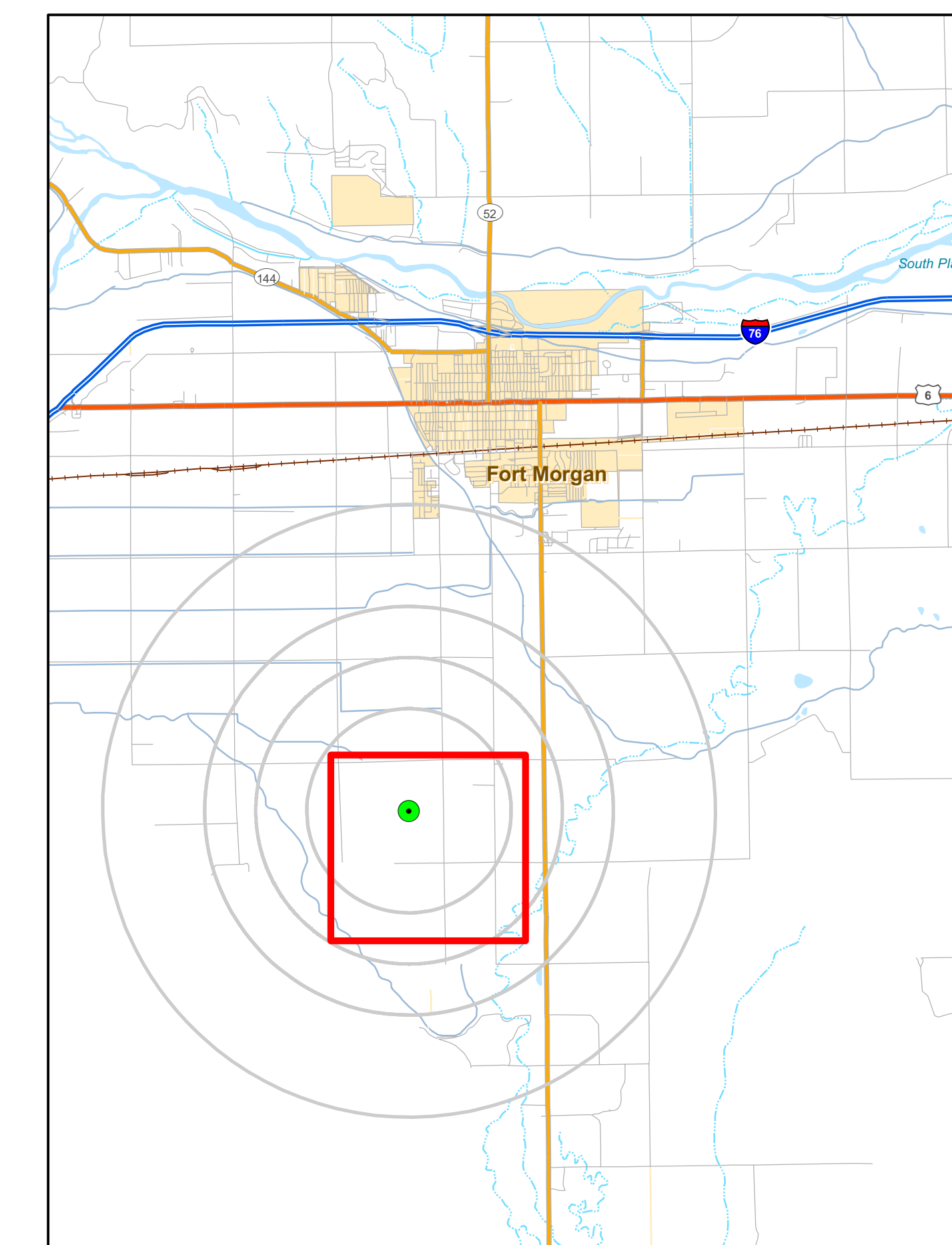
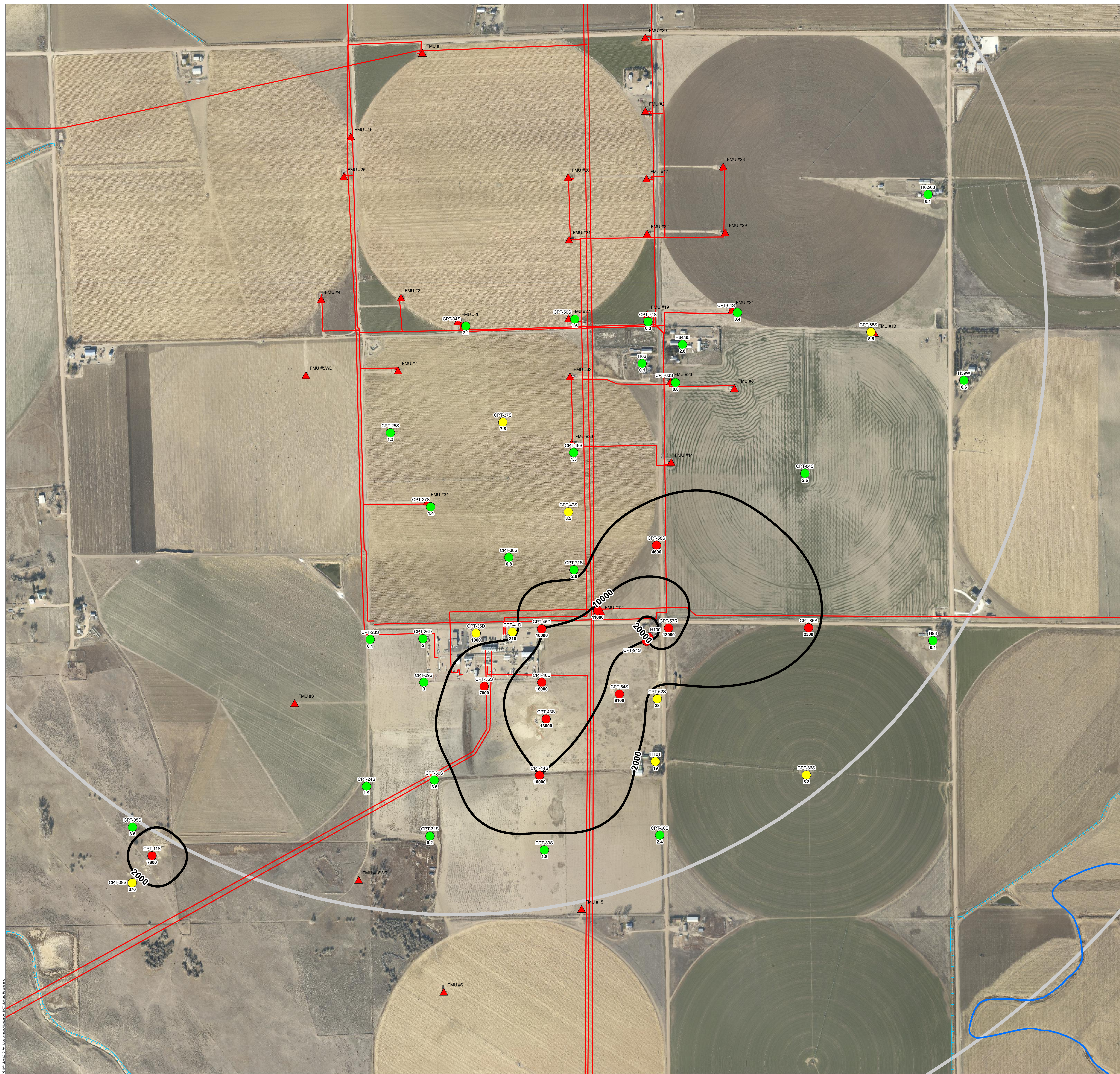


Figure 3-6
September 2007 Dissolved Methane
Plume Map
CIG Fort Morgan
Gas Storage Field

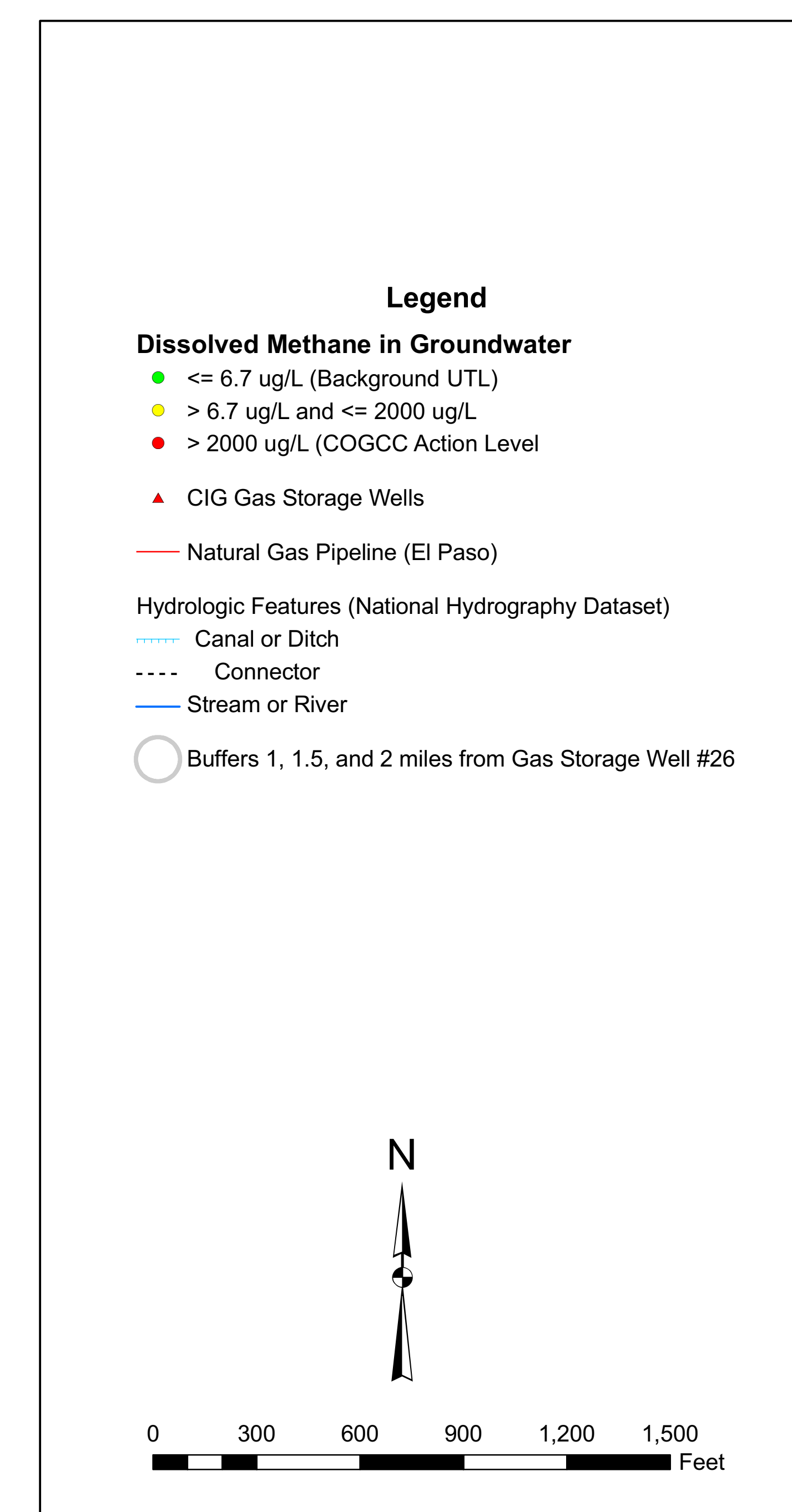
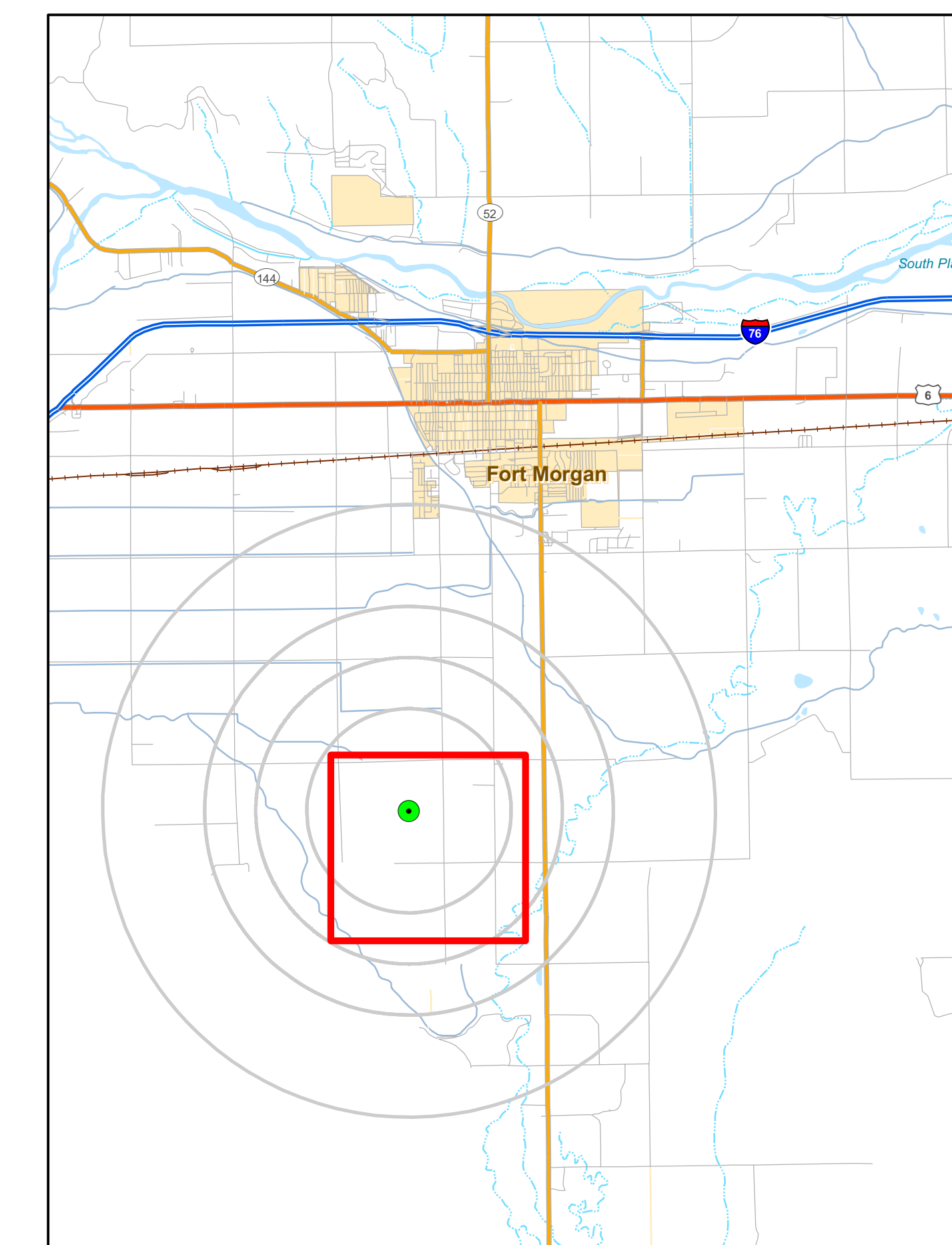
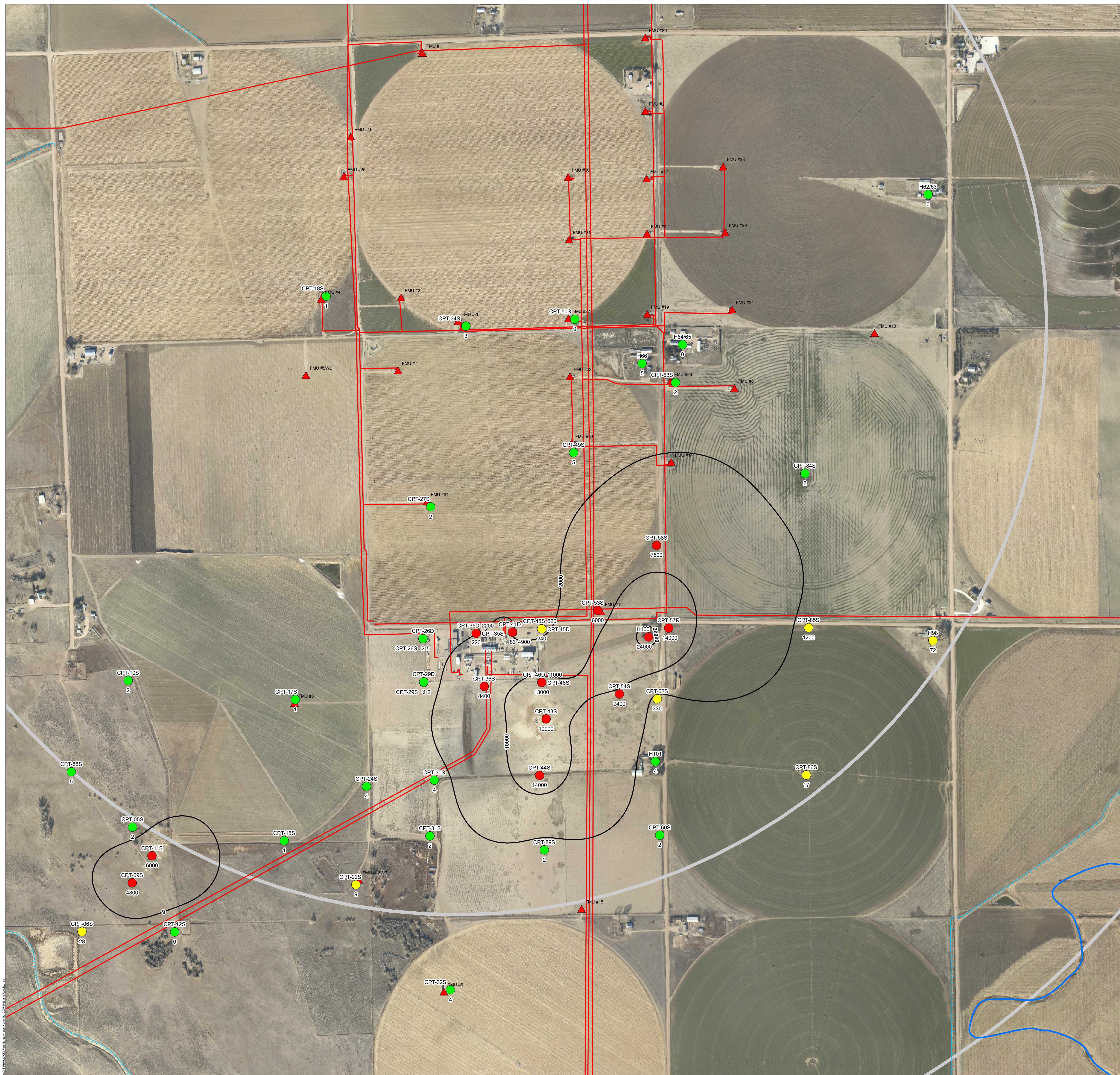
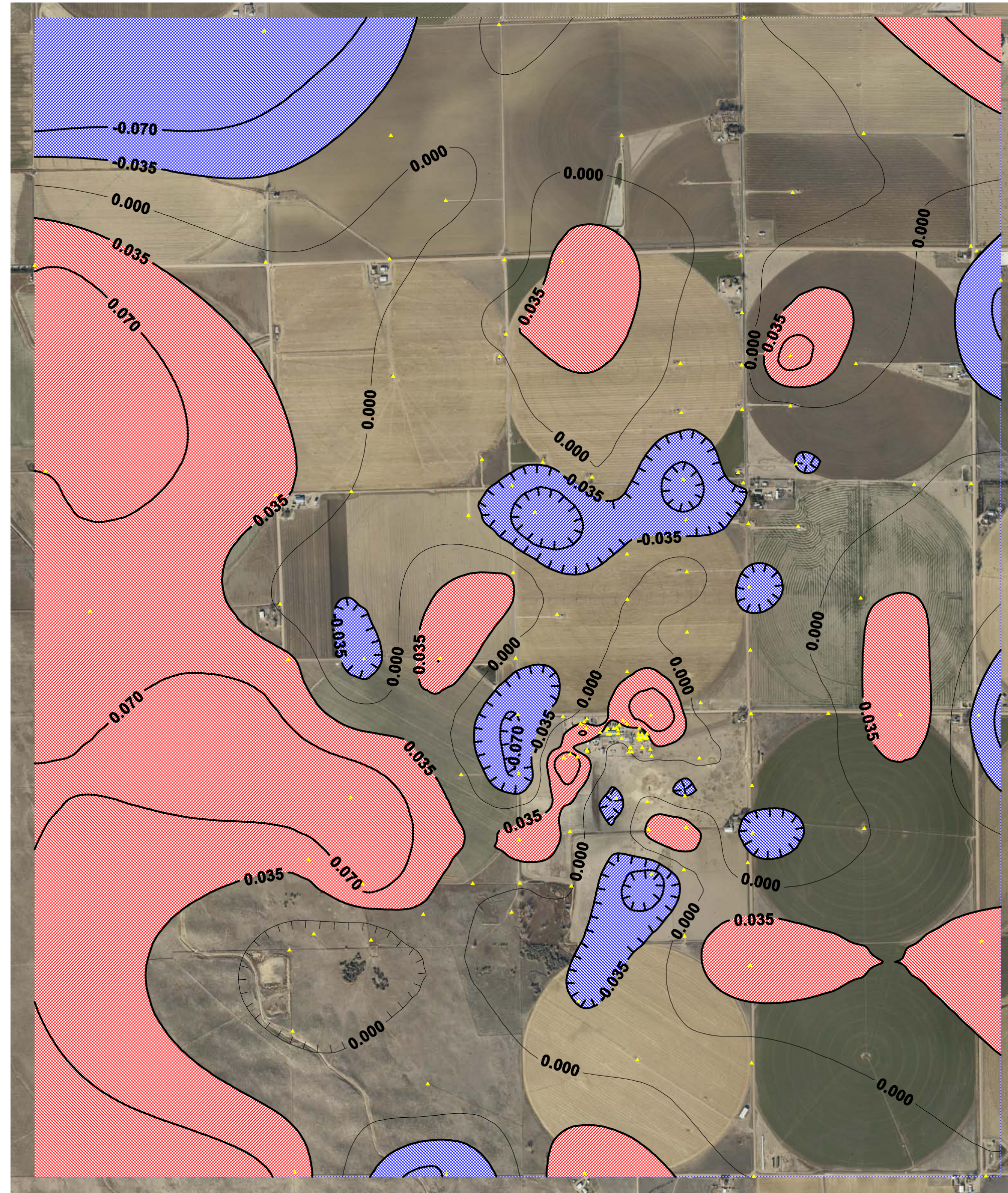


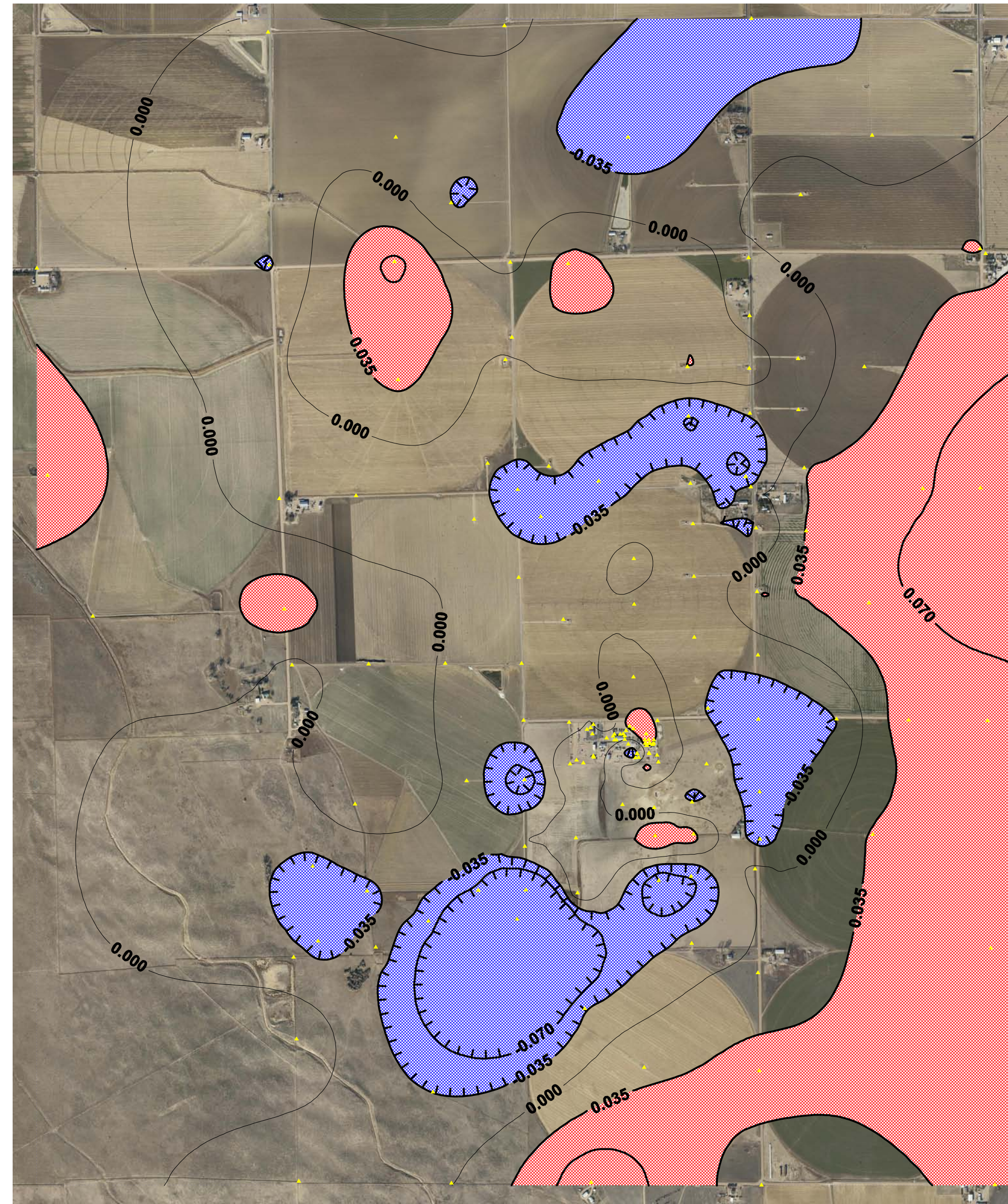
Figure 3-8
March 2008 Dissolved Methane
Plume Map
CIG Fort Morgan
Gas Storage Field

**Cumulative Change in Benchmark Elevation (feet)
Between 11-10-06 and 11-17-06**



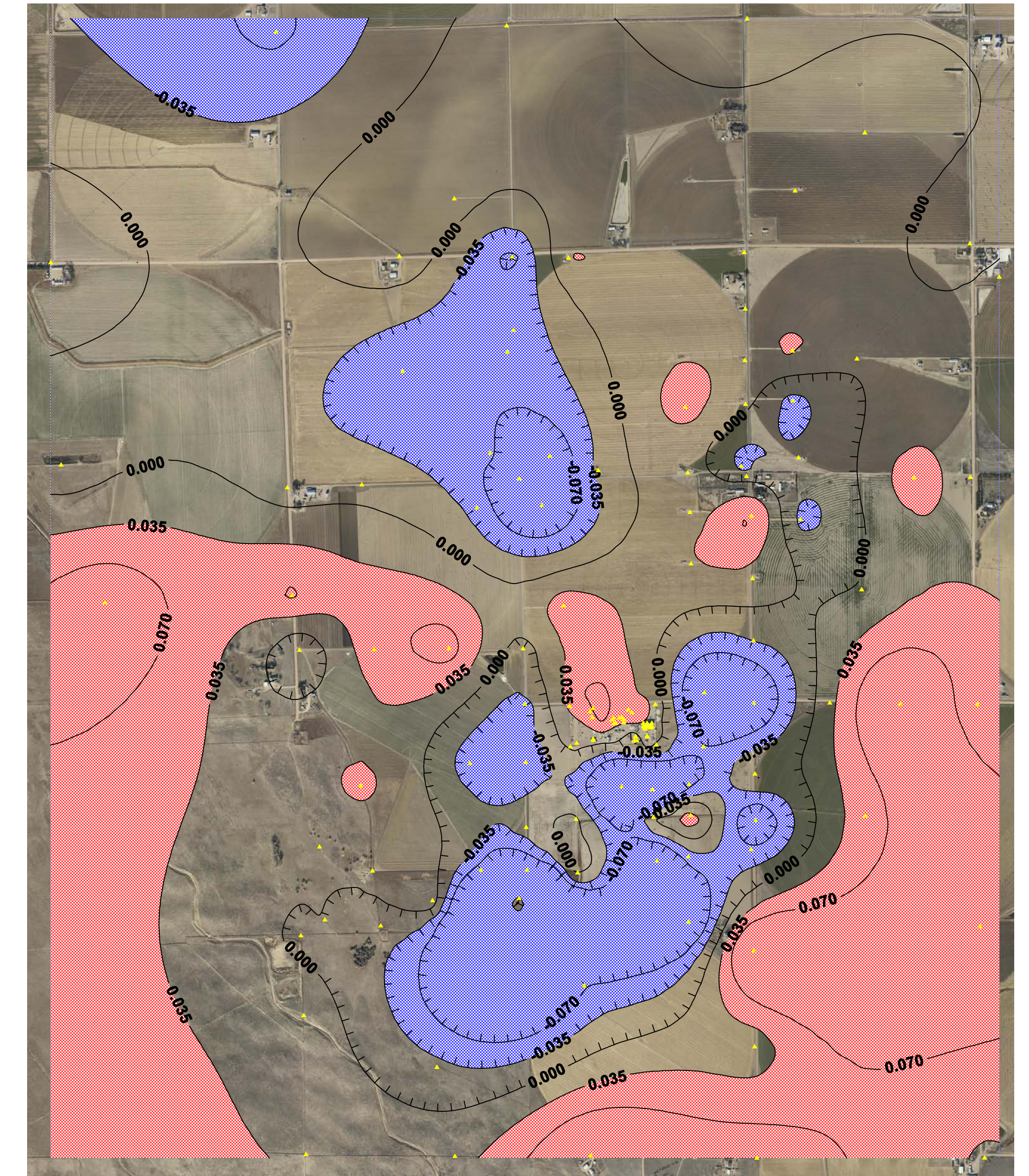
The blue hatched areas appear to have subsided compared to the November 10, 2006 baseline.
The red hatched areas appear to have heaved compared to the November 10, 2006 baseline.

**Cumulative Change in Benchmark Elevation (feet)
Between 11-10-06 and 11-28-06**



The blue hatched areas appear to have subsided compared to the November 10, 2006 baseline.
The red hatched areas appear to have heaved compared to the November 10, 2006 baseline.

**Cumulative Change in Benchmark Elevation (feet)
Between 11-10-06 and 07-20-07**



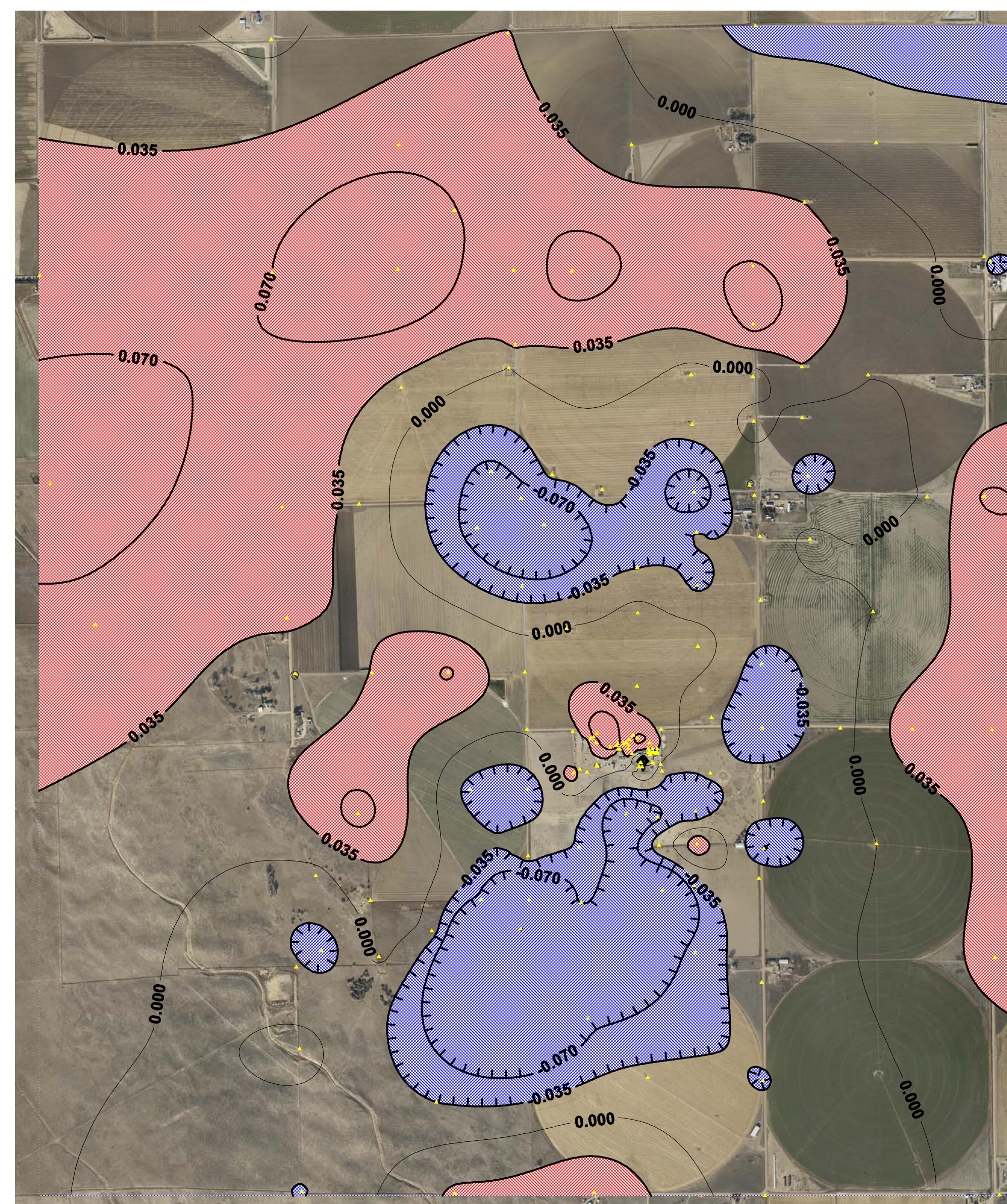
The blue hatched areas appear to have subsided compared to the November 10, 2006 baseline.
The red hatched areas appear to have heaved compared to the November 10, 2006 baseline.

**Cumulative Change in Benchmark Elevation (feet)
Between 11-10-06 and 12-12-06**



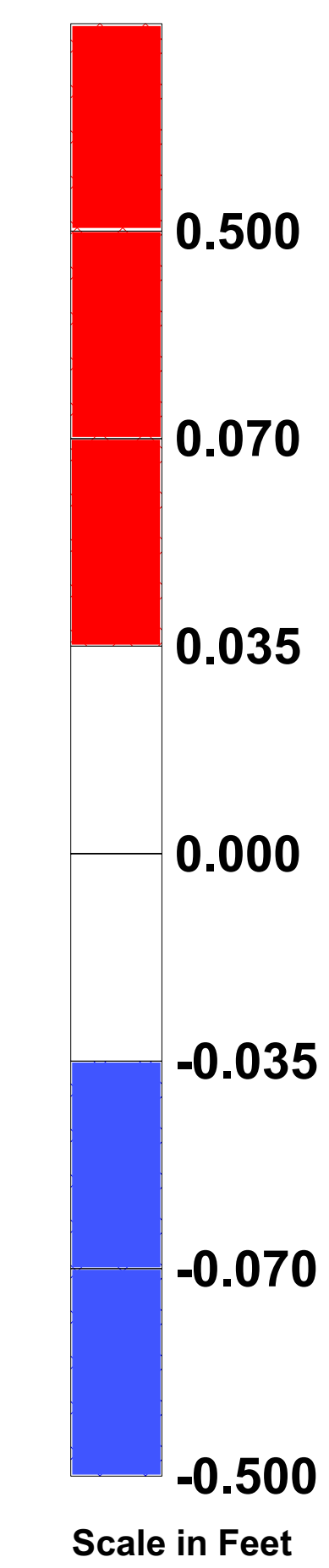
The blue hatched areas appear to have subsided compared to the November 10, 2006 baseline.
The red hatched areas appear to have heaved compared to the November 10, 2006 baseline.

**Cumulative Change in Benchmark Elevation (feet)
Between 11-10-06 and 03-16-07**



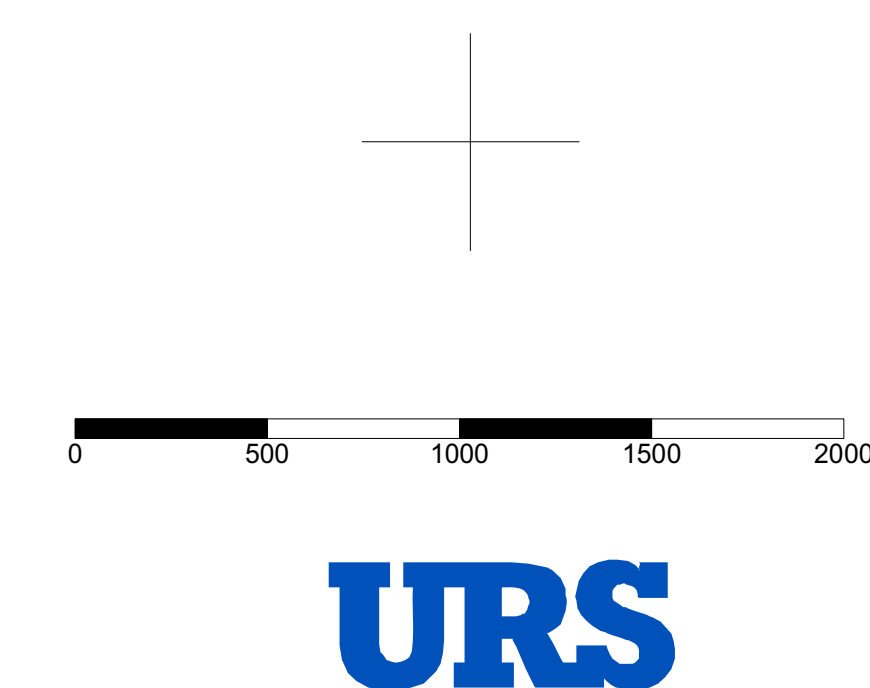
The blue hatched areas appear to have subsided compared to the November 10, 2006 baseline.
The red hatched areas appear to have heaved compared to the November 10, 2006 baseline.

LEGEND

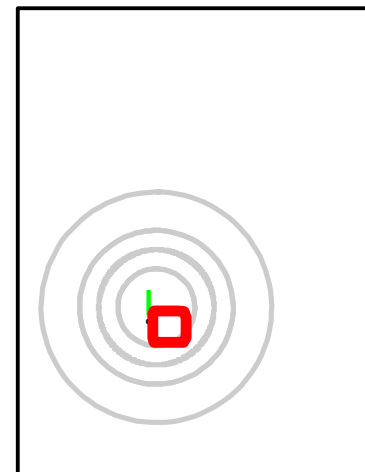
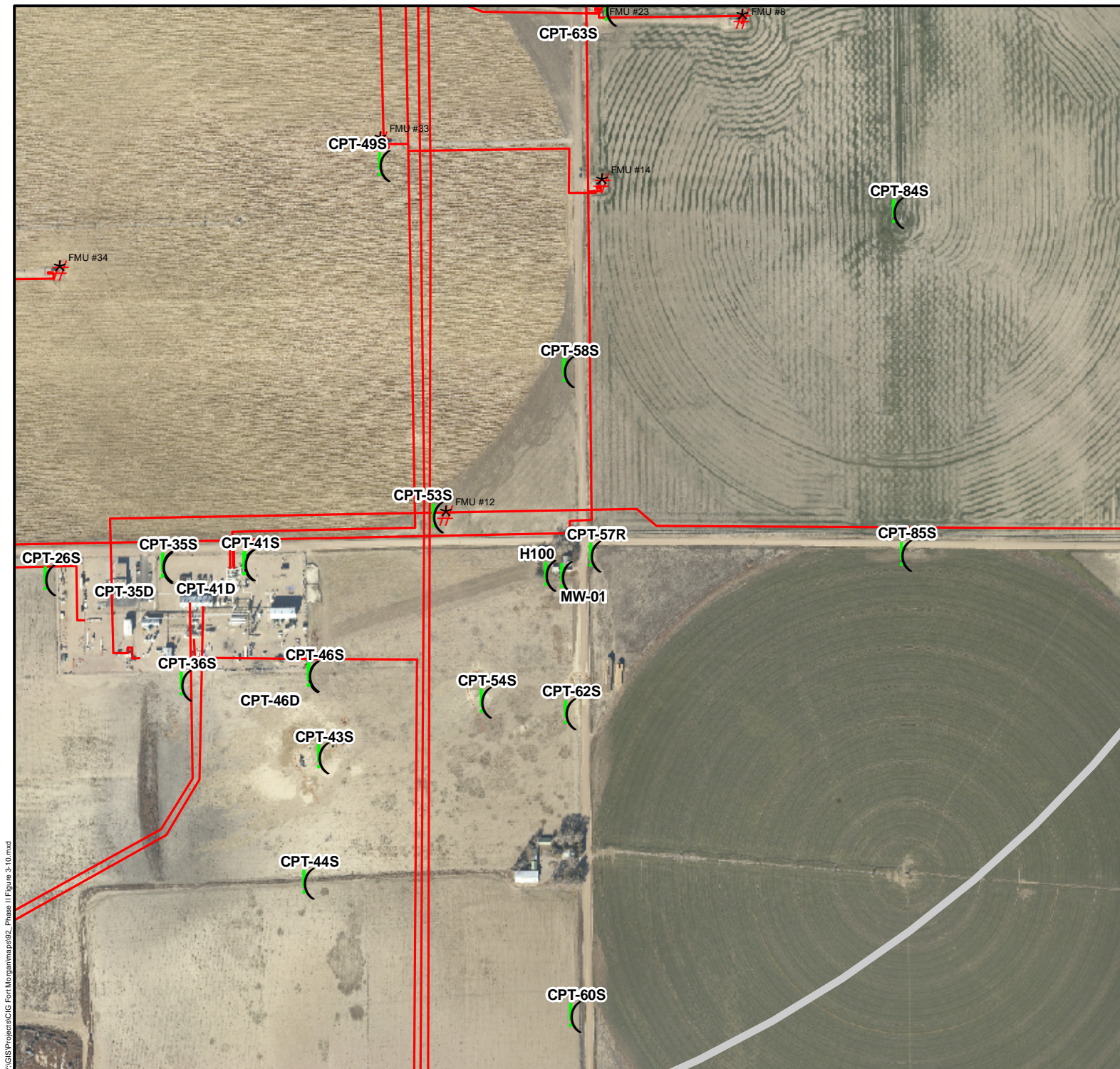


Hatched areas appear to
have heaved compared to the
November 10, 2006 baseline.

Hatched areas appear to
have subsided compared to the
November 10, 2006 baseline.



**Figure 3-9
Benchmark Elevation
Differential Maps
CIG Fort Morgan
Gas Storage Field**



Legend

- () Groundwater Sampling Location
- # CIG Gas Storage Wells
- Natural Gas Pipeline (El Paso)

Hydrologic Features

- Canal or Ditch
- Stream or River

- Buffers 1, 1.5, and 2 miles from Gas Storage Well #26

3

0 200 400 600 800 Feet

**Figure 3-10
Location of New
Monitor Well**

**CIG Fort Morgan
Gas Storage Field**

