

# Antero Proposed Application Spacing/10 Acre Density

0606-SP-26

## LEGEND

### WILLIAMS 10-ACRE DENSITY ORDERS

- Order 510-14
- Orders 510-12, 479-14, 440-28
- Orders 510-9, 479-12, 440-25, 139-40
- Orders 510-8, 479-11, 440-23, 139-38, 49
- Order 510-17

- 10-Acre Density Pilot
- Orders 510-6, 479-9, 440-22, 139-37

### ENCANA 10-ACRE DENSITY ORDERS

- Order 510-13
- Order 479-15

### BBC 10-ACRE DENSITY ORDER

- Orders 191-8 & 191-11

### BBC SETBACK ORDER

- Order 191-9, Gibson Gulch Fed, 100 ft setbacks at 10-Acre Boundary

### PDC 10-ACRE DENSITY ORDER

- Order 510-11
- Order 510-18

### NOBLE 10-ACRE DENSITY ORDER

- Order 139-45

### PETROGULF 10-ACRE DENSITY ORDER

- Order 139-47

### OXY 10-ACRE DENSITY ORDER

- Order 510-15

### ANTERO 10-ACRE DENSITY ORDERS

- Orders 510-16 & 523-2
- Orders 191-13 through 191-21

### PRESCO 10-ACRE DENSITY ORDER

- Order 139-53

- Williams Fork Orders < 20-Acre Density Spacing

- Williams Fork and/or Mesa Verde Orders > 10-Acre or 20-Acre Density Spacing

Antero Exhibit E1

Rifle

Silt

New Castle

Antero Exhibit E8

## Antero Resources Corporation

Piceance Basin  
Garfield County, CO

191-27

Exhibit: L1

Cause No. 191

Docket No. 0606-SP-26



01754663



Antero Resources Corporation  
Piceance Basin  
Garfield County, CO  
  
Exhibit: L2  
Cause No. 191  
Docket No. 0606-SP-26

**T5S-R92W**

**Antero Leaseholds**

- Full Interest
- Partial Interest
- No Antero Interest

Silt Town Limits

US 6  
Union Pacific Railroad

Union Pacific Railroad

I-70

Rifle City Limits

**T6S-R93W**

**T6S-R92W**

BBC 10-Acre Density  
Orders 191-8 & 191-11



**Antero Resources Corporation**

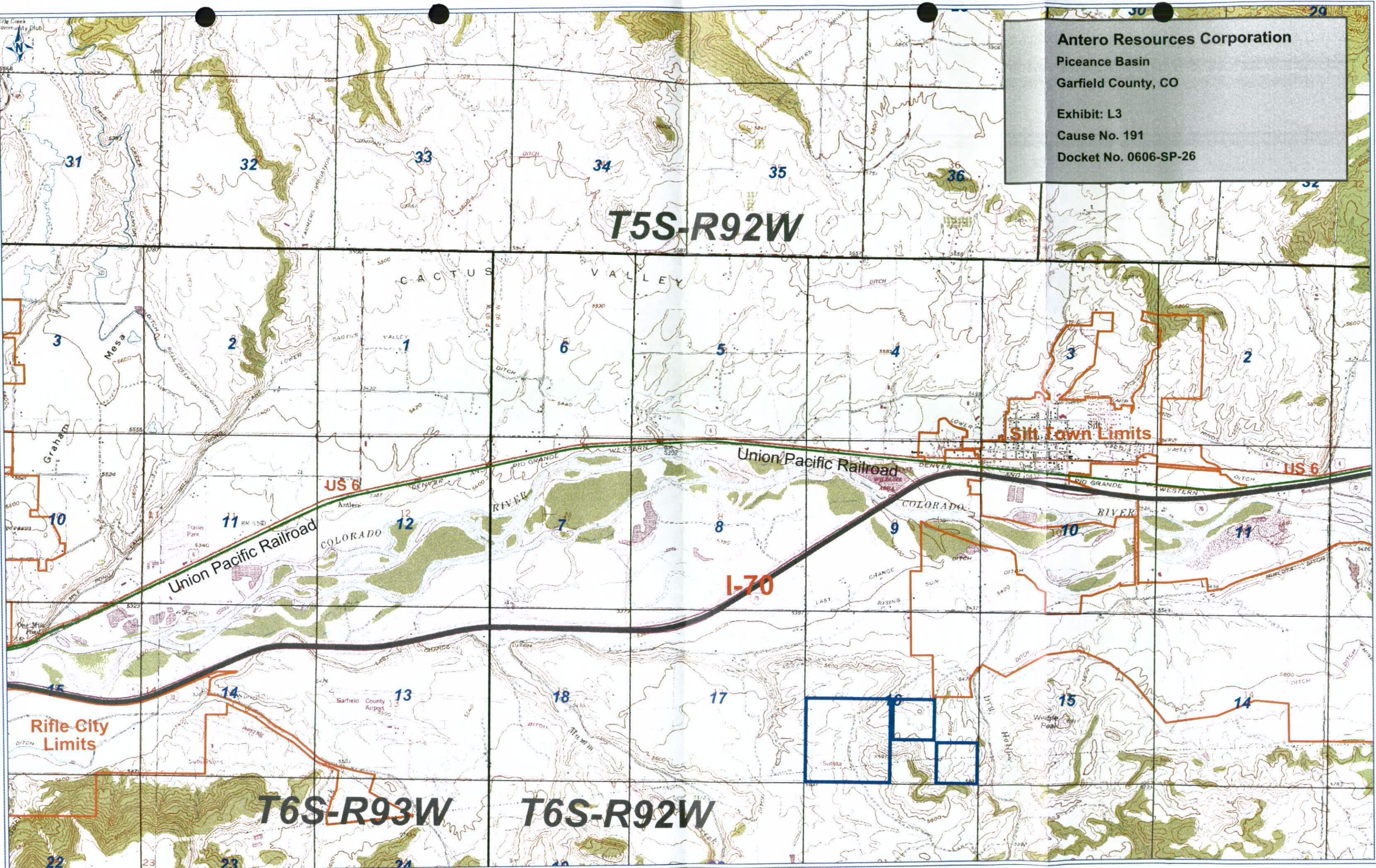
Piceance Basin

Garfield County, CO

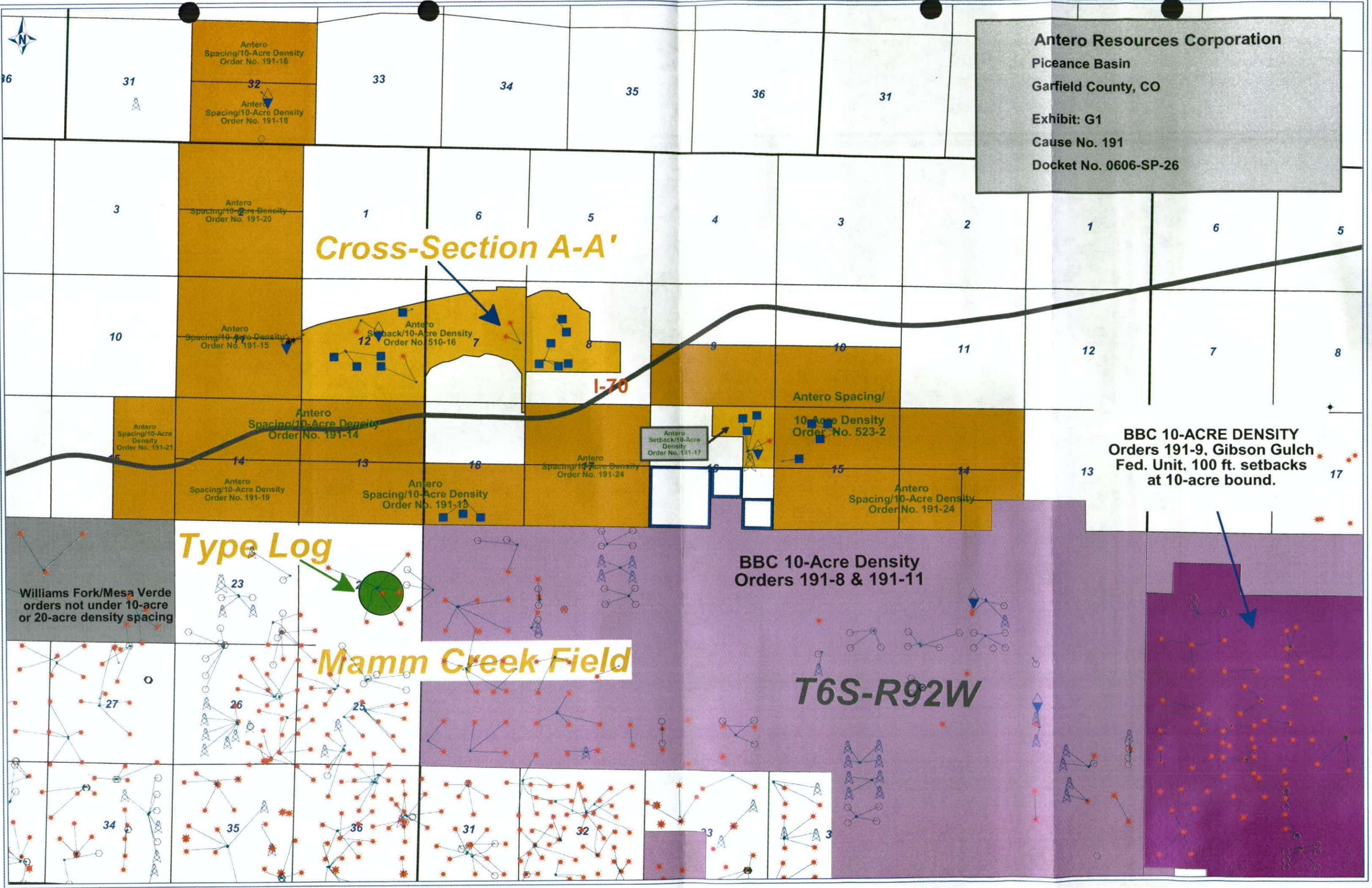
Exhibit: L3

Cause No. 191

Docket No. 0606-SP-26







**Antero Resources Corporation**  
Piceance Basin  
Garfield County, CO  
  
Exhibit: G1  
Cause No. 191  
Docket No. 0606-SP-26





# Mesaverde Group

Williams Fork Formation

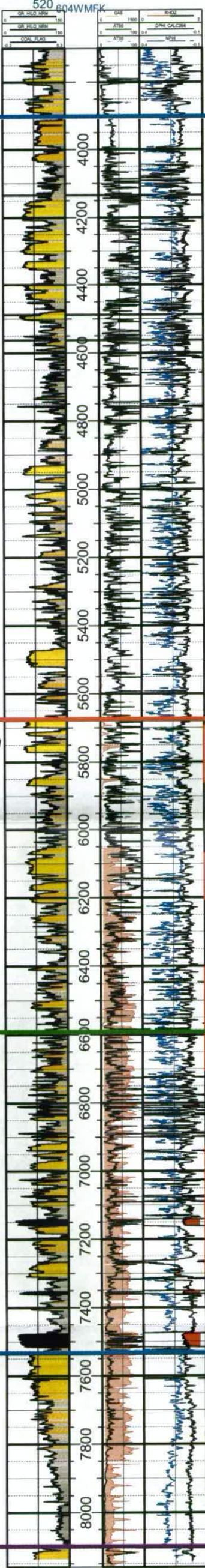
Top Gas Saturation

Cameo Member

Rollins Member

Illes Formation

Cozzette Member



Antero Resources Corporation

Exhibit: G2

Cause No. 191

Docket No. 0606-SP-26

Piceance Basin

Williams Fork Type Log





**Landsat Digital Mosaic of the Mississippi River Valley, Mississippi and Arkansas,  
Illustrating Meanderbelt Complexes**

Reproduced from Atlas of North America. Space Age Portrait of a Continent  
Veridian ERIM International  
Copyright © 1985 National Geographic Society, Washington, D.C.

Antero Resources Corporation  
Piceance Basin  
Garfield County, CO  
Exhibit G3  
Cause No. 191  
Docket No. 0606-SP-26



A

A'

ANTERO RESOURCES CORP  
ISLAND PARK B

ANTERO RESOURCES CORP  
ISLAND PARK B

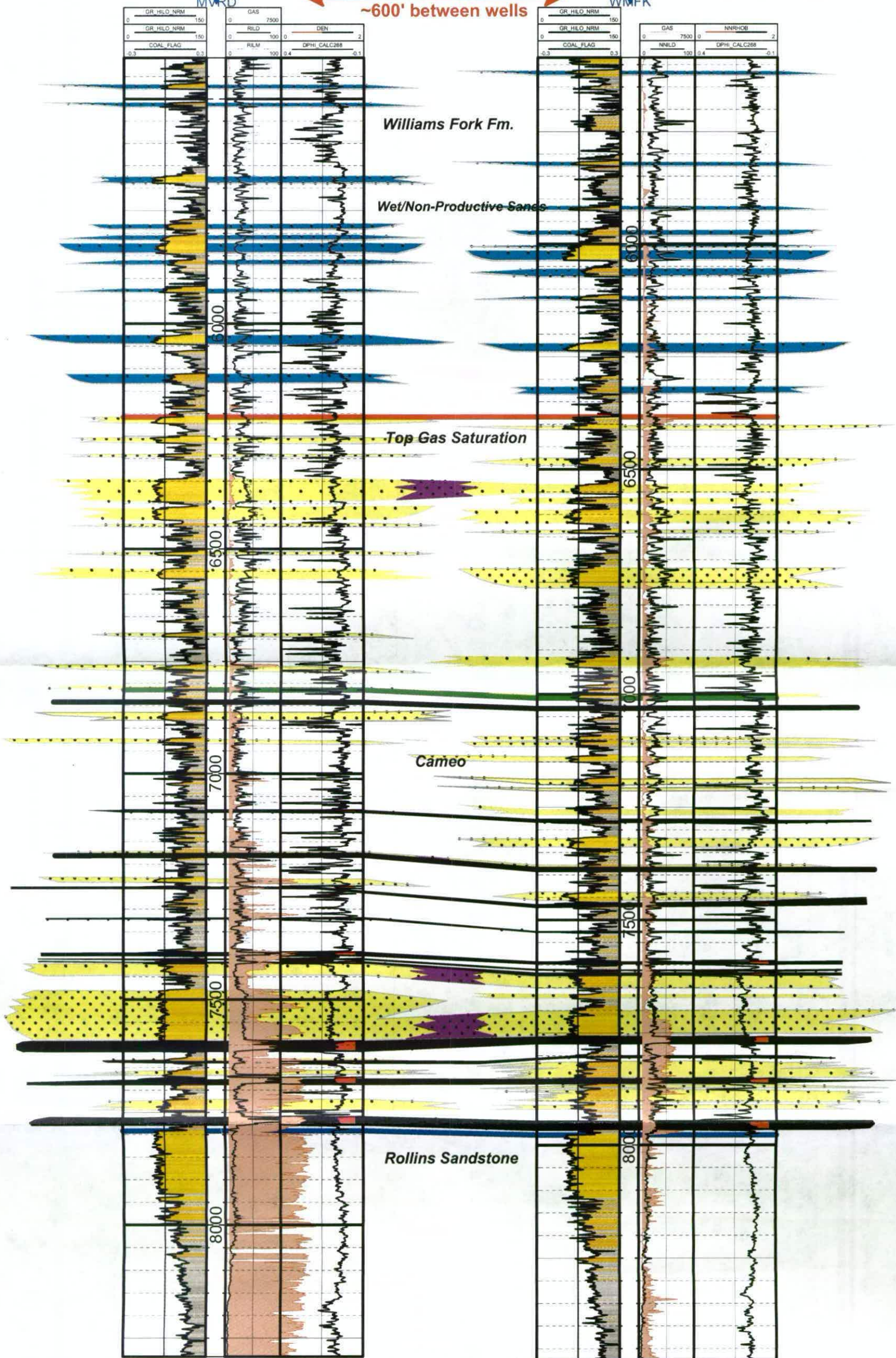
TD : 8,530  
ELEV\_GR : 5,376

TD : 8,977  
ELEV\_GR : 5,376

MVRD

WMFK

~600' between wells



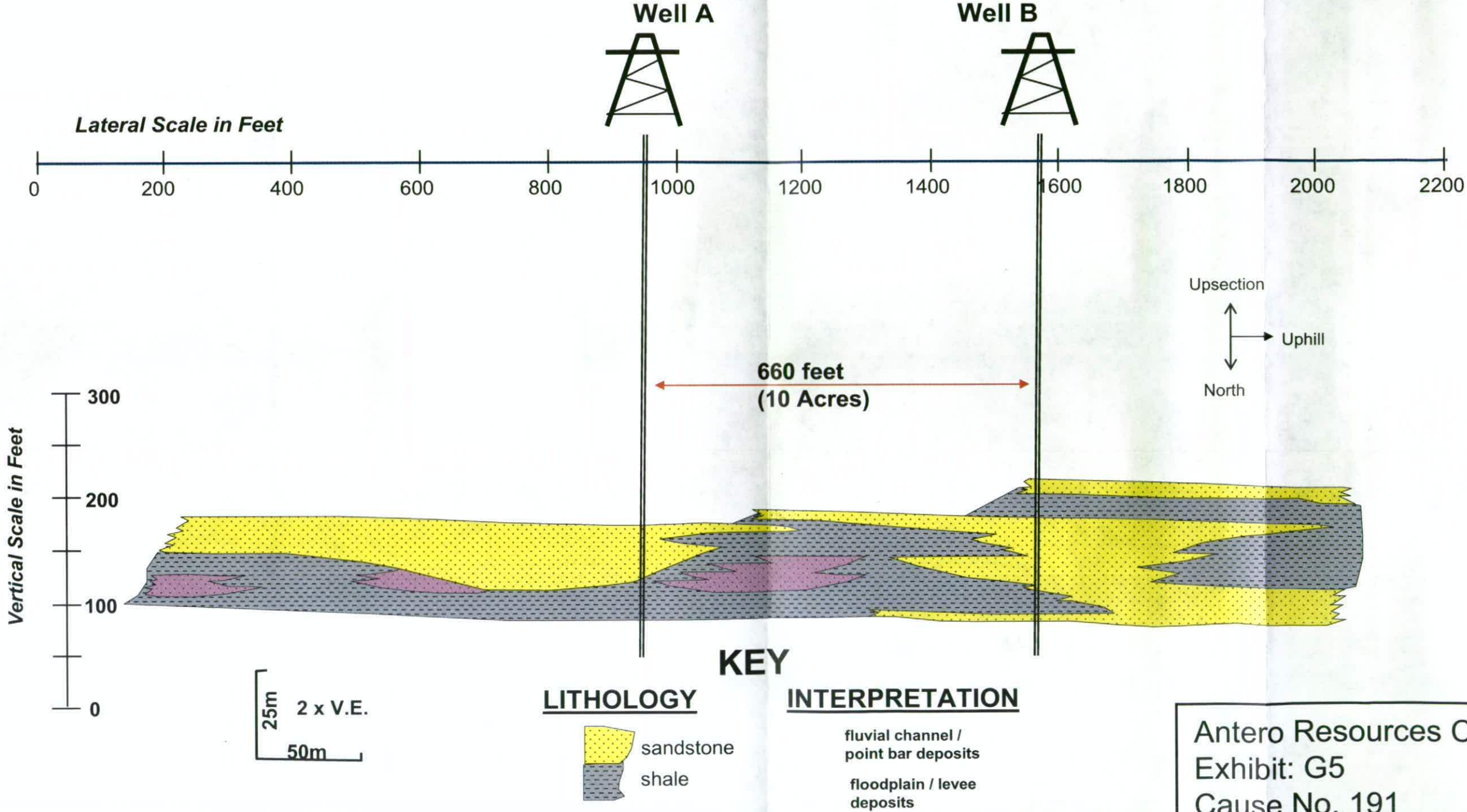
Antero Resources Corporation

Exhibit: G4  
Cause No. 191  
Docket No. 0606-SP-26

Cross-Section A-A'  
Williams Fork Formation



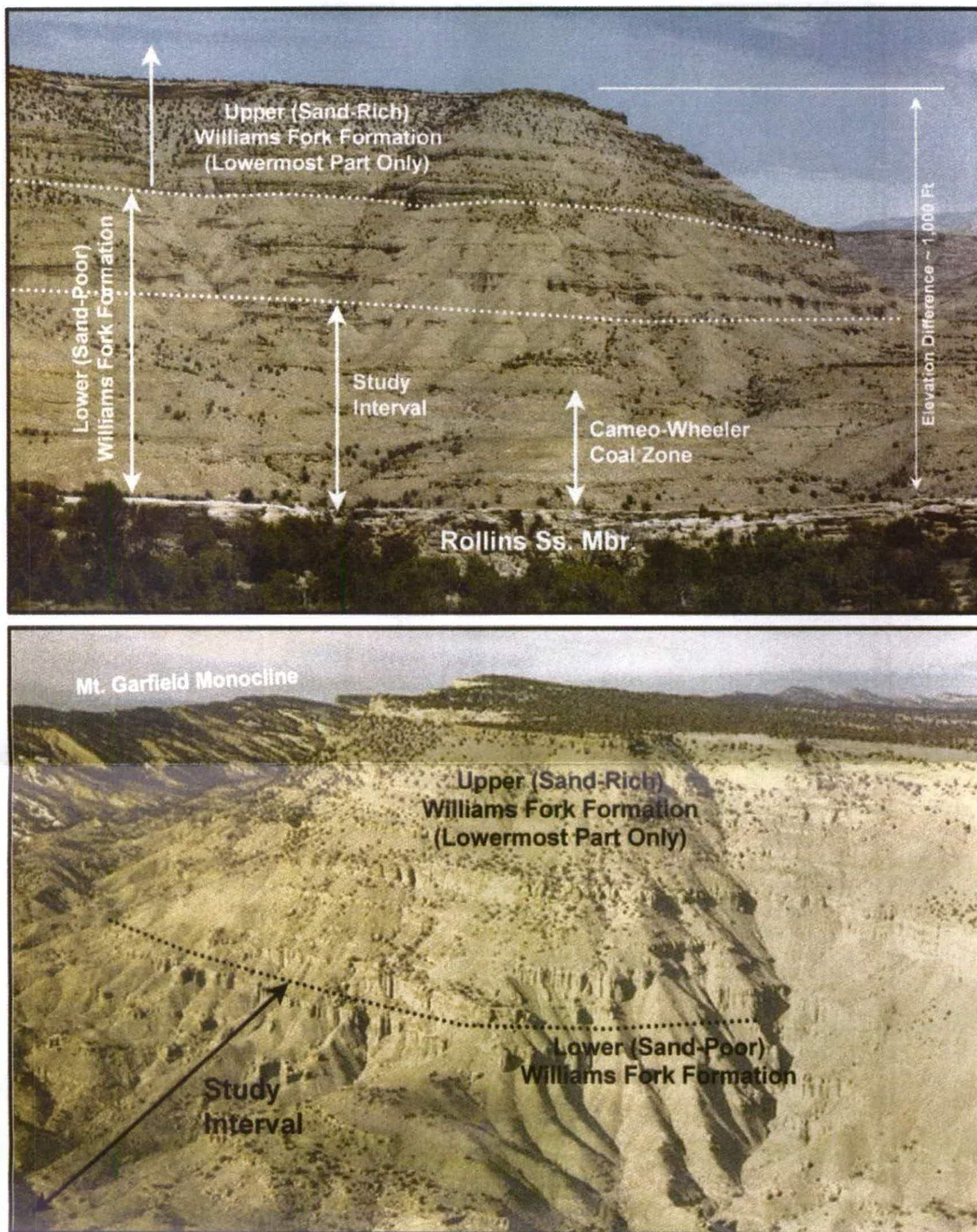
# Outcrop Diagram



Outcrop of lens 8, west side of Rifle Gap, modified from Lorenz, 1982 (Pg. 28, Fig. 12)

Antero Resources Corporation  
Exhibit: G5  
Cause No. 191  
Docket No. 0606-SP-26





**Figure 4.** Photographs of study area. Upper photo shows the east-west leg of Coal Canyon, whereas the lower photo shows the north-south leg of the canyon near the bend.

Lower Williams Fork Formation Study Area,  
Coal Canyon, Colorado  
(Cole, Rex D. and Cumella Stephen P., 2005  
RMAG Mountain Geologist Vol. 42 No. 3)

Antero Resources Corporation  
Exhibit G 6  
Cause No. 191  
Docket No. 0606-SP-26



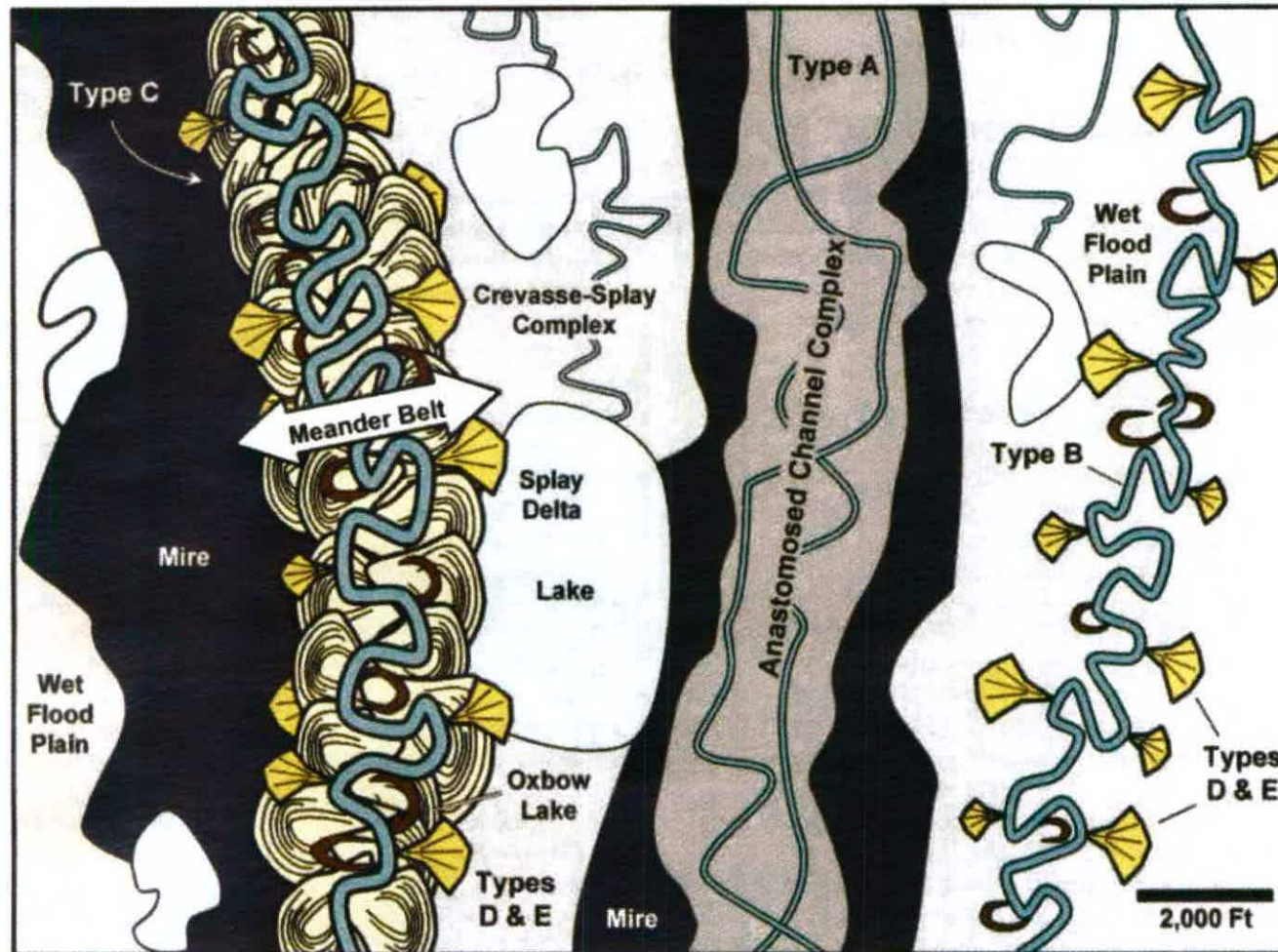
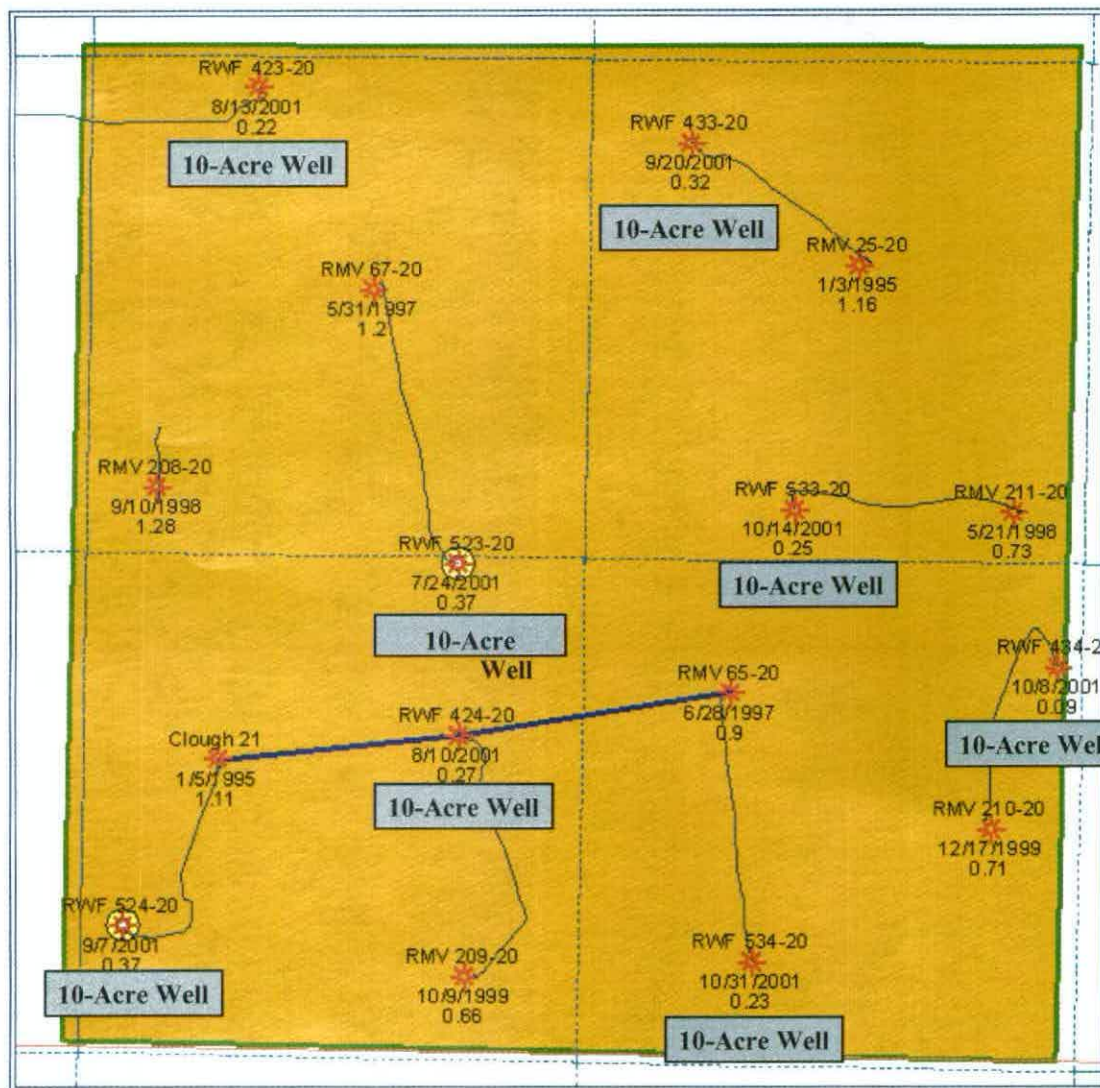


Figure 8. Diagrammatic depositional model for the lower (sand-poor) Williams Fork Formation, as suggested by the observations in Coal Canyon. Modified from Cole and Cumella (2003).

Sand-Body Types and Depositional Models from the  
Lower Williams Fork Formation, Coal Canyon, Colorado  
(Cole, Rex D. and Cumella Stephen P., 2005  
RMAG Mountain Geologist Vol. 42 No. 3)

Antero Resources Corporation  
Piceance Basin  
Garfield County, CO  
Exhibit: G7  
Cause No. 191  
Docket No. 0606-SP-26





# Rulison 10-Acre Pilot W/2 SE/4 and E/2 SW/4 20-T6S-R94W

Well Name



Spud Date

Cum Prod (BCF)



POSTED WELL DATA

Well Label  
Well - Spud Date  
Well - Cum Prod (BCF)

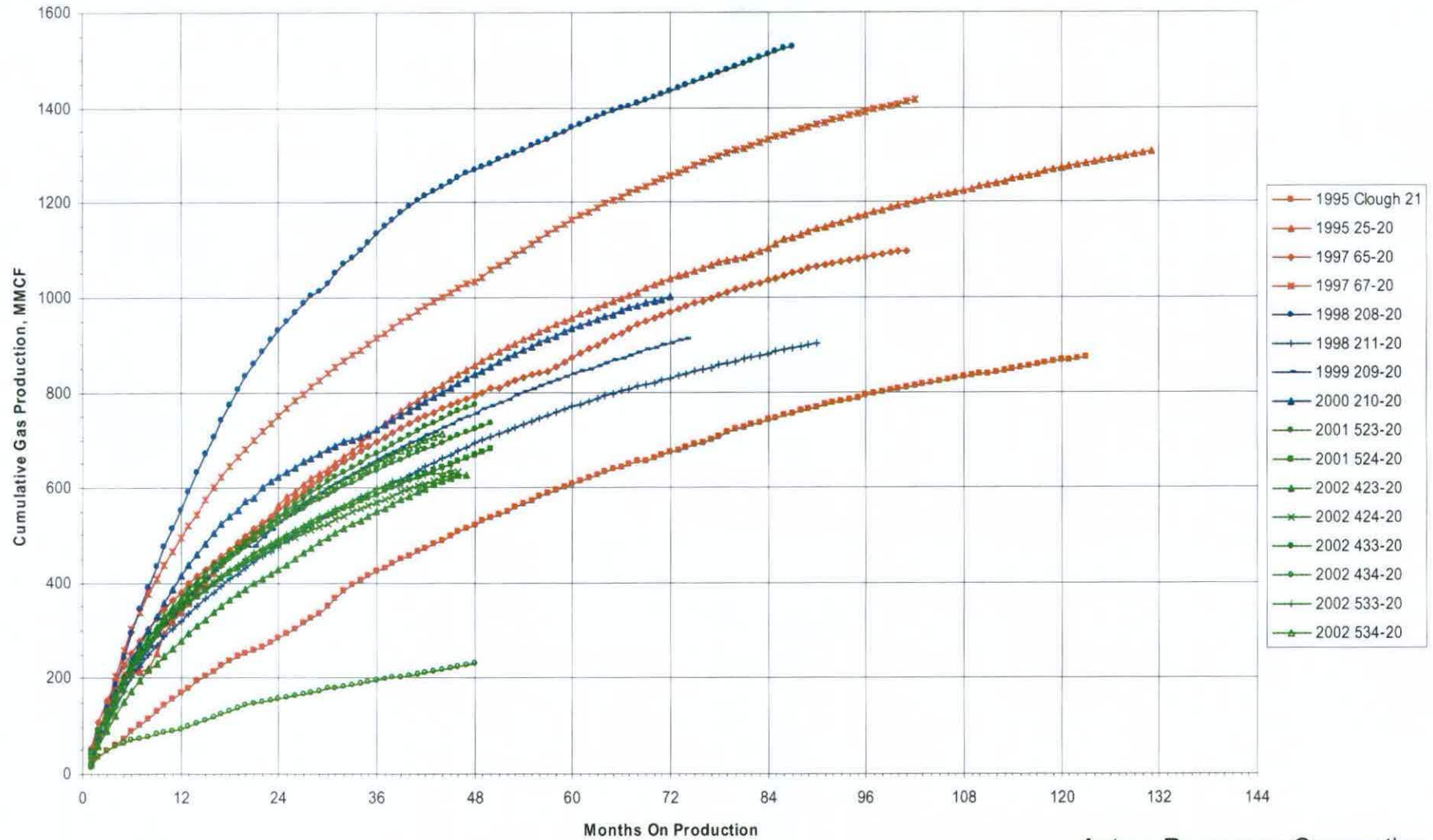
ATTRIBUTEMAP



Antero Resources Corporation  
Exhibit E - 1  
Cause No. 191  
Docket No. 0606-SP-26

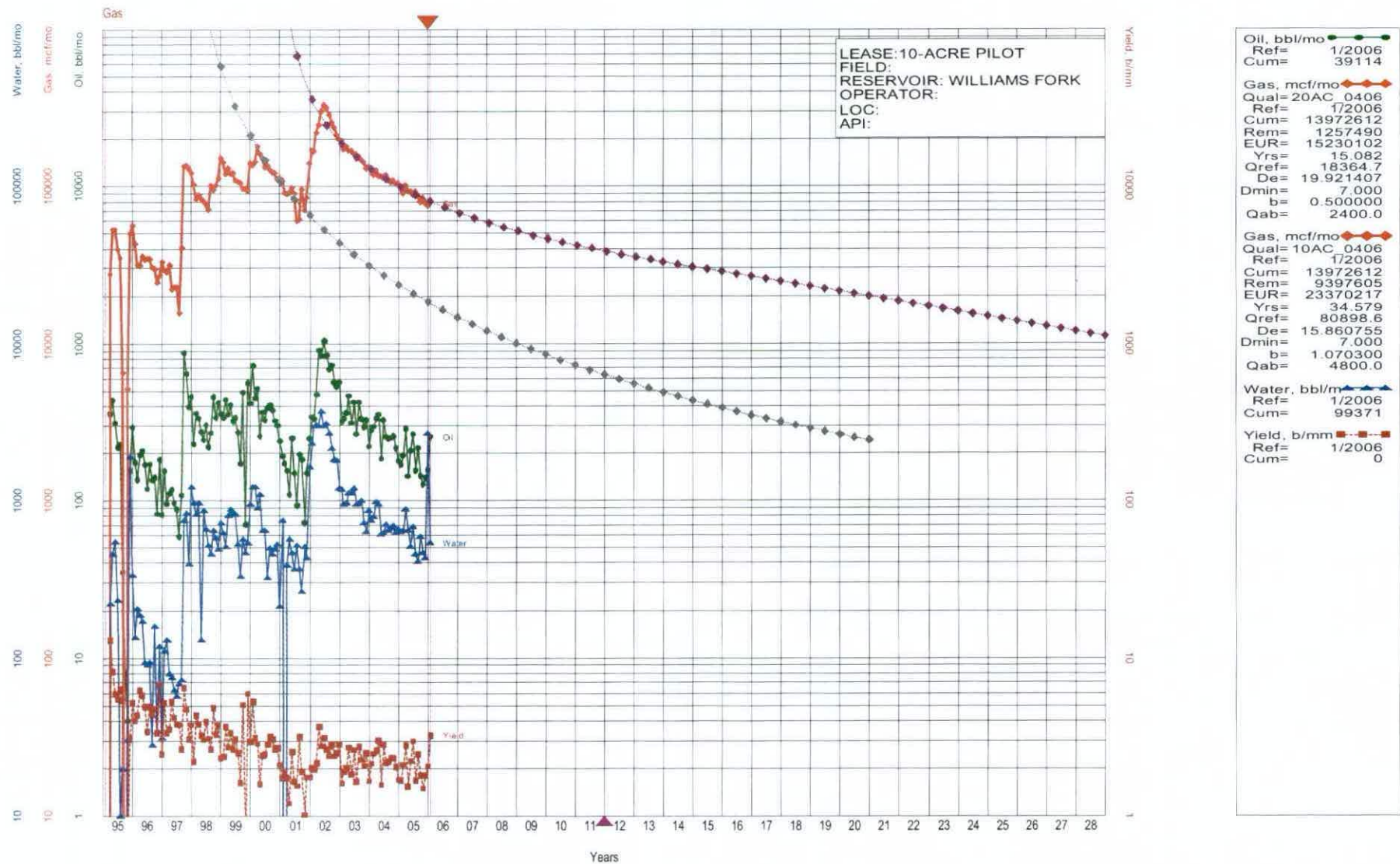


Rulison 10-Acre Pilot Area  
S20-T6S-R94W  
Cumulative Gas Production Versus Months On Production



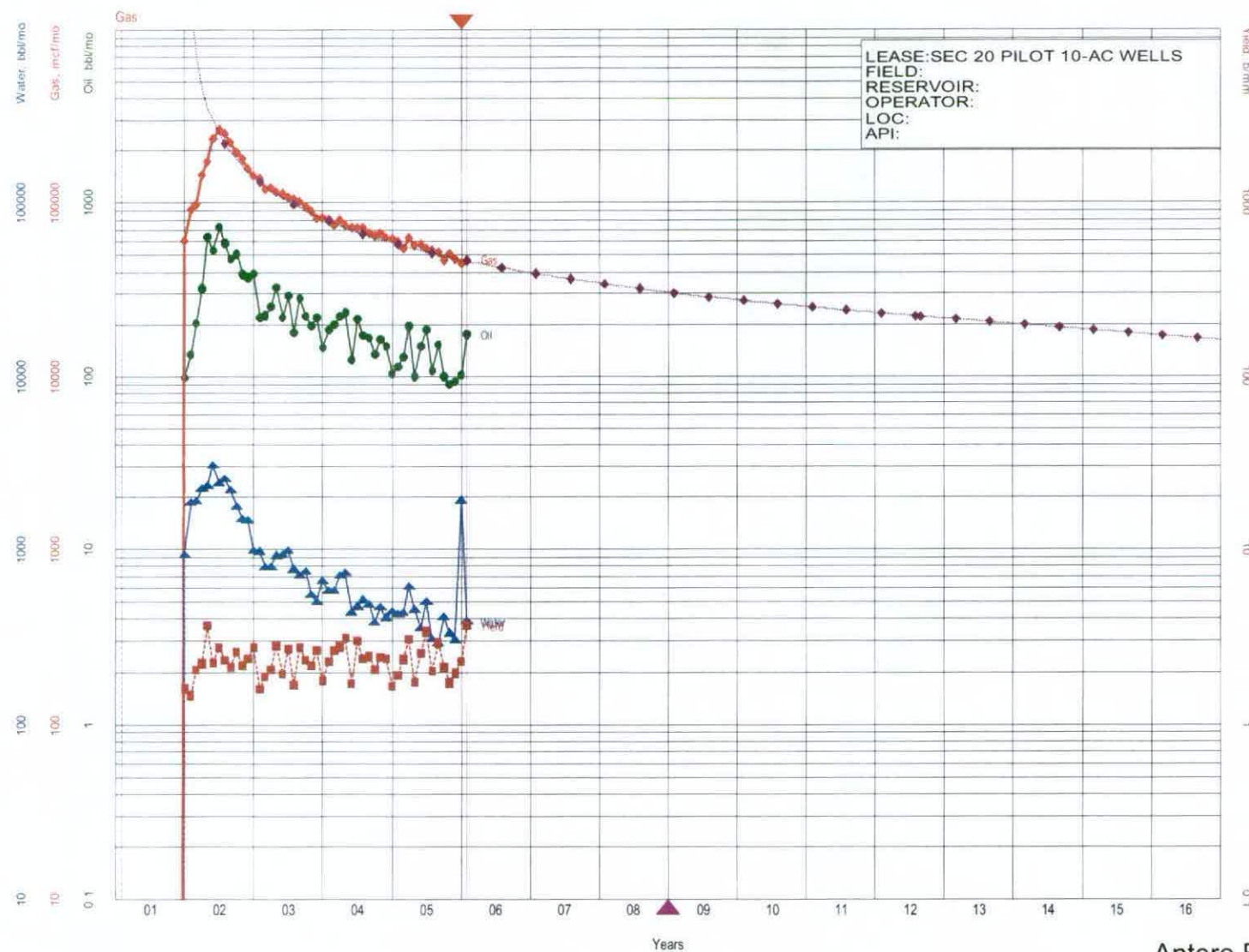
Antero Resources Corporation  
Exhibit E - 2  
Cause No. 191  
Docket No. 0606-SP-26





Antero Resources Corporation  
Exhibit E - 5  
Cause No. 191  
Docket No. 0606-SP-26





Oil, bbl/mo	1/2006
Ref=	11895
Cum=	
Gas, mcf/mo	1/2006
Qual40_AC_0406	4975169
Ref=	5720700
Cum=	10695869
Rem=	37.244
EUR=	47076.5
Yrs=	15.934501
Qref=	7.000
De=	1.300000
Dmin=	2400.0
b=	
Qab=	
Water, bbl/m	1/2006
Ref=	47428
Cum=	
Yield, b/mm	1/2006
Ref=	0
Cum=	

Antero Resources Corporation  
 Exhibit E - 6  
 Cause No. 191  
 Docket No. 0606-SP-26





T6S-R92W

31

32

33

- Zone: WELL - COMP\_DATE 01/01/1900 to 12/31/1999
- Zone: WELL - COMP\_DATE 01/01/2000 to 12/31/2001
- Zone: WELL - COMP\_DATE 01/01/2002 to 12/31/2002
- Zone: WELL - COMP\_DATE 01/01/2003 to 12/31/2003
- Zone: WELL - COMP\_DATE 01/01/2004 to 12/31/2004
- Zone: WELL - COMP\_DATE 01/01/2005 to 12/31/2005

Antero Resources Corporation

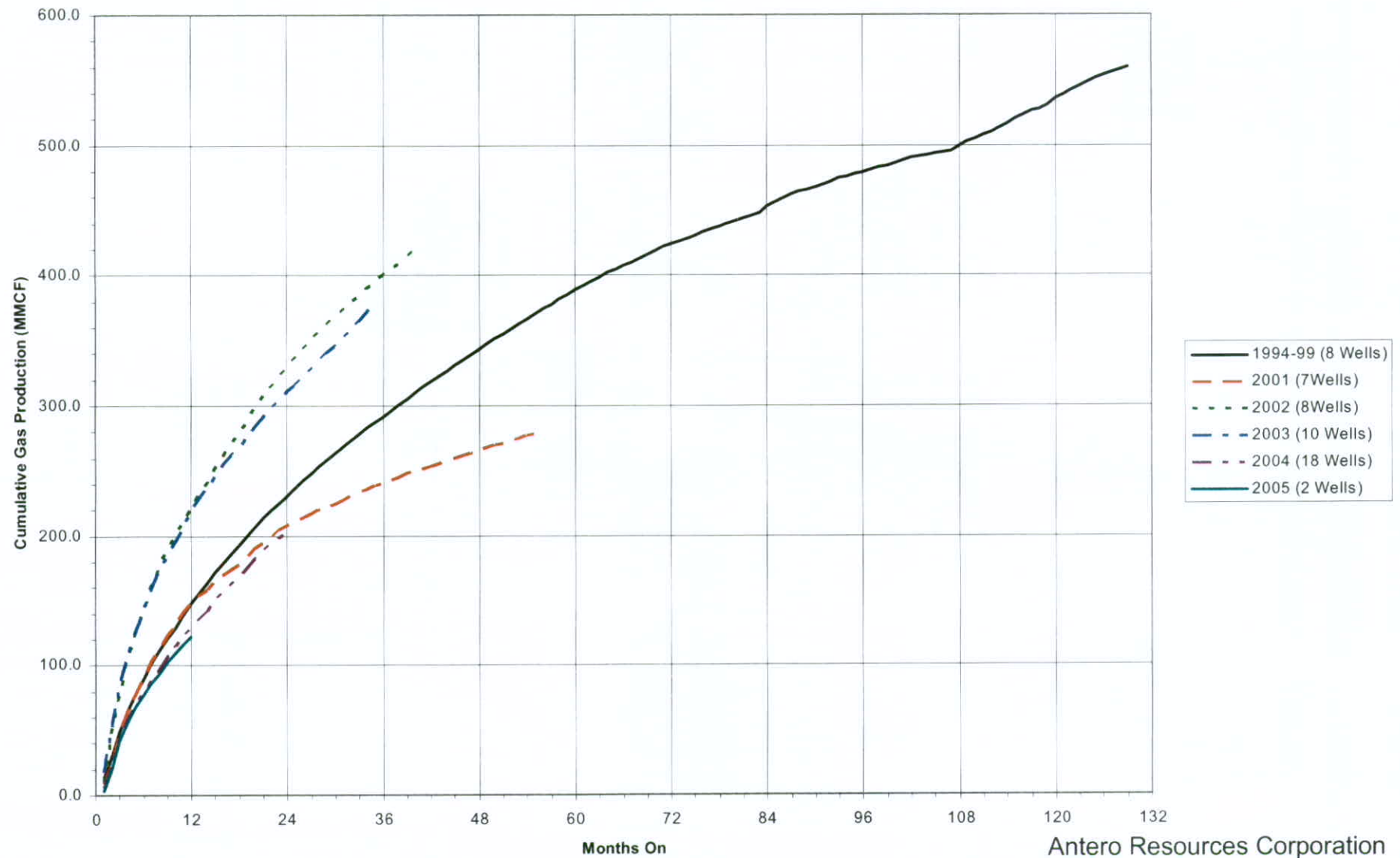
Exhibit E-8  
Cause No. 191  
Docket No. 0606-SP-26

Mamm Creek Field  
10-Acre Development  
Section 32 TWP 6S RNG 92W





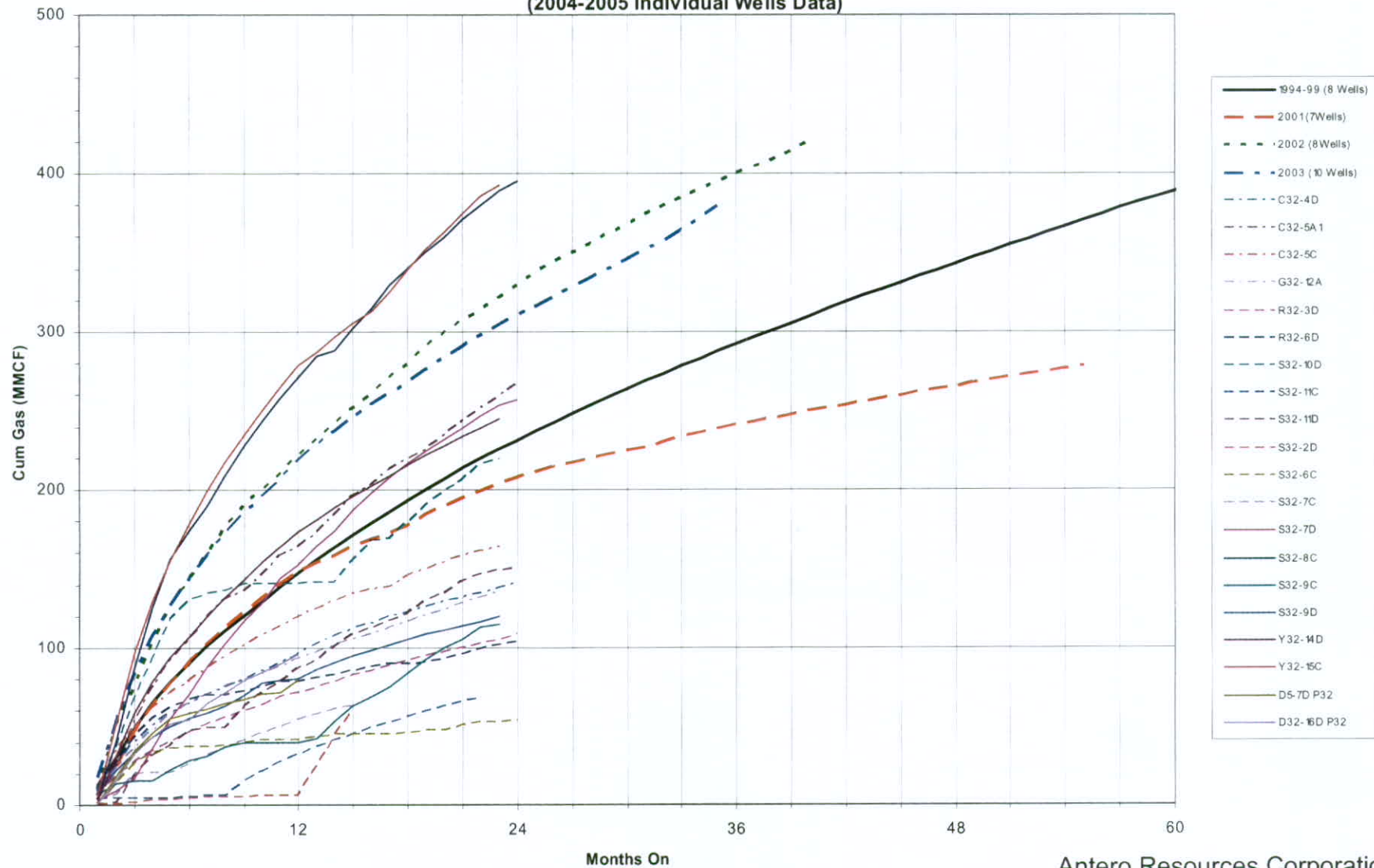
WILLIAMS FORK COMPLETIONS S32-6S-92W  
Average Well Cumulative Production Vs Months On by Year of First Production



Antero Resources Corporation  
Exhibit E - 9  
Cause No. 191  
Docket No. 0606-SP-26

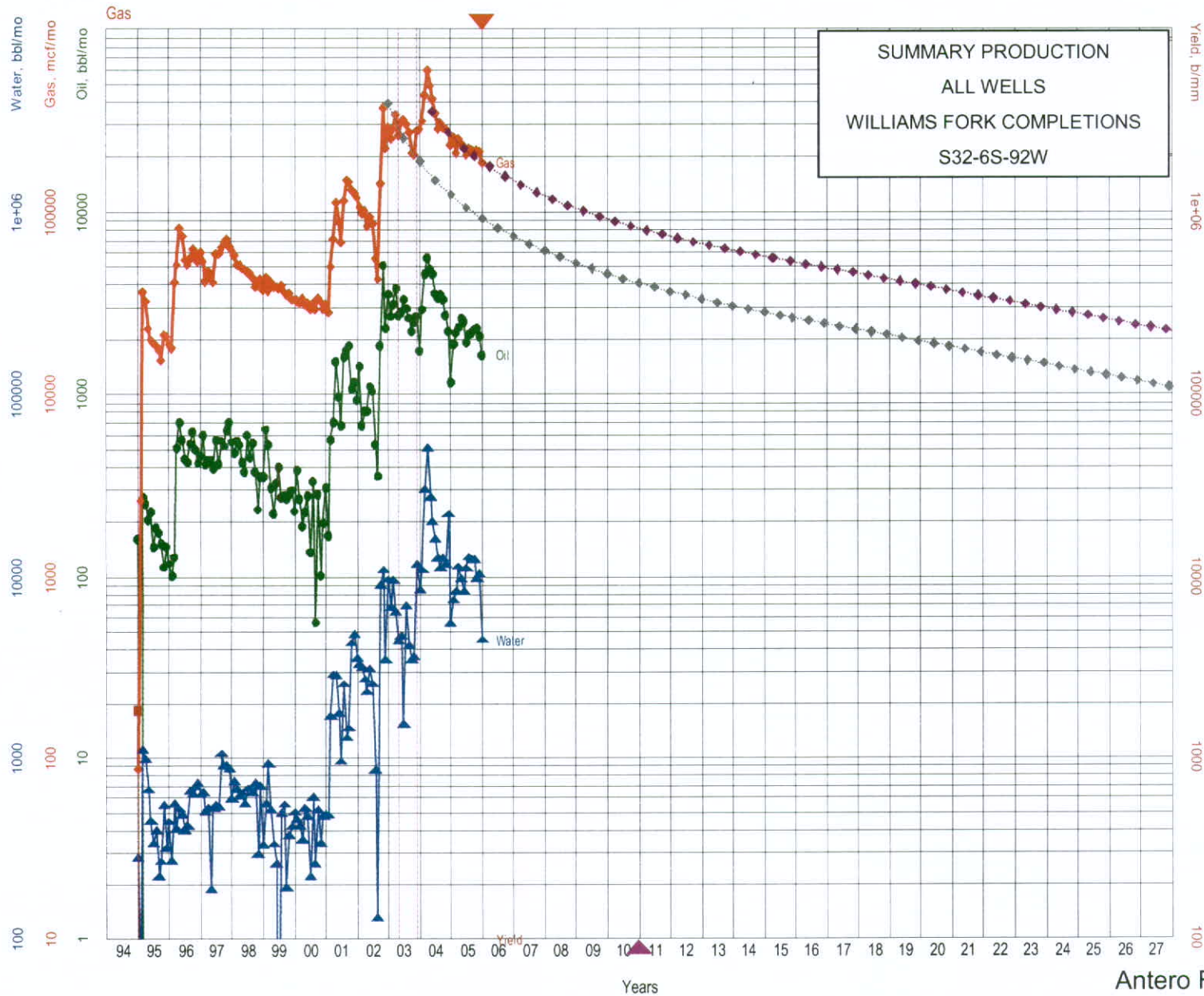


**WILLIAMS FORK COMPLETIONS S32-6S-92W**  
**Average Well Cumulative Production Vs Months On Production**  
**(2004-2005 Individual Wells Data)**



Antero Resources Corporation  
 Exhibit E - 10  
 Cause No. 191  
 Docket No. 0606-SP-26

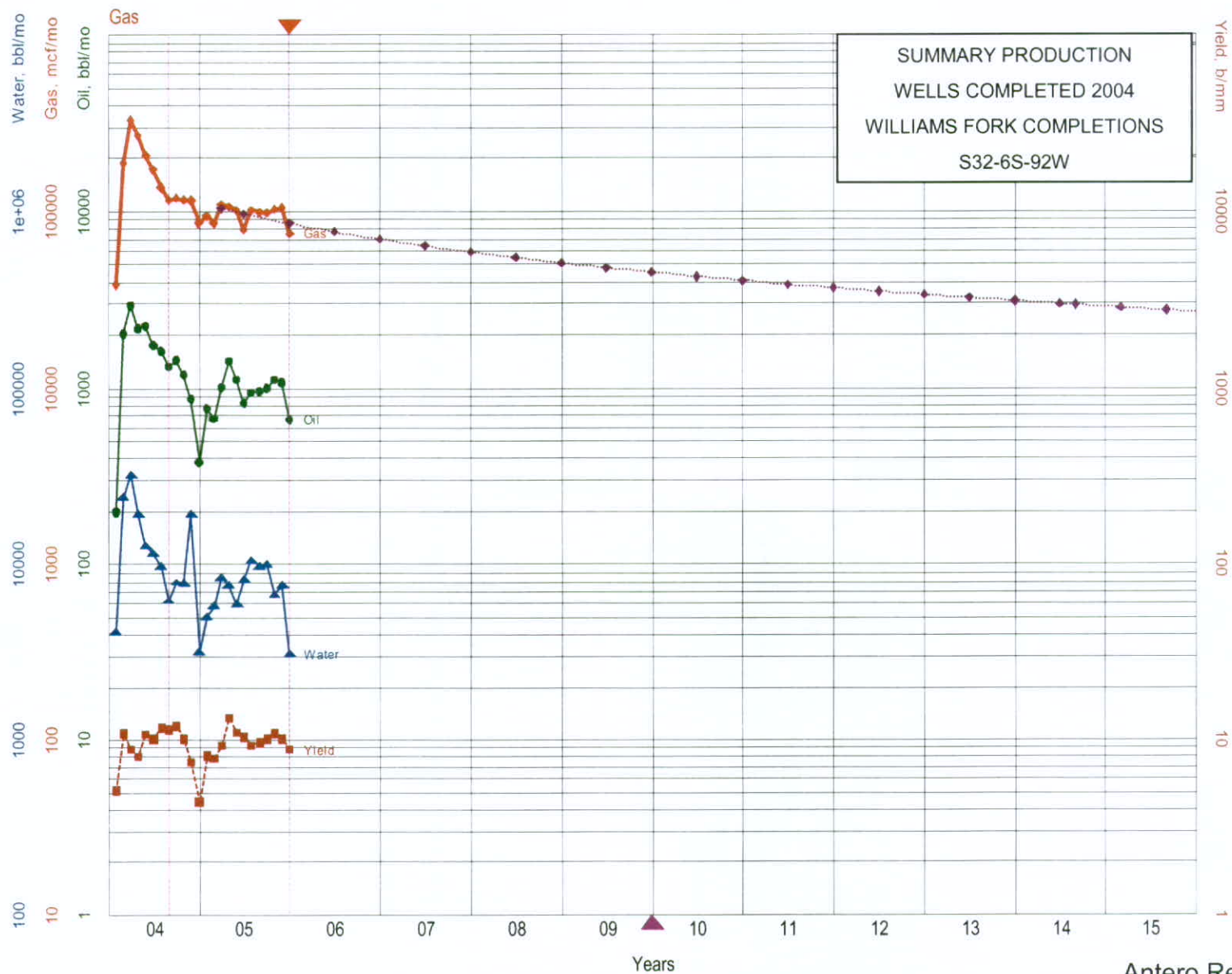




Oil, bbl/mo	●
Ref=	1/2006
Cum=	159235
Gas, mcf/mo	◆
Qual=	ALL WELLS
Ref=	1/2006
Cum=	16133001
Rem=	17289850
EUR=	33422851
Yrs=	27.076
Qref=	189460.0
De=	21.602646
Dmin=	7.000
b=	1.100000
Qab=	15300.0
Gas, mcf/mo	◆
Qual=	20-AC WELLS
Ref=	1/2006
Cum=	16133001
Rem=	8199132
EUR=	24332133
Yrs=	23.412
Qref=	92500.5
De=	20.279346
Dmin=	7.000
b=	0.999800
Qab=	9900.0
Water, bbl/m	▲
Ref=	1/2006
Cum=	539209
Yield, b/mm	▲
Ref=	1/2006
Cum=	0

Antero Resources Corporation  
Exhibit E - 11  
Cause No. 191  
Docket No. 0606-SP-26





Oil, bbl/mo	1/2006
Ref=	29754
Cum=	
Gas, mcf/mo	1/2006
Qual#0-AC_WELLS	
Ref=	3056088
Cum=	8201239
Rem=	11257327
EUR=	23.746
Yrs=	85608.2
Qref=	18.721749
De=	7.000
Dmin=	1.100000
b=	9900.0
Qab=	
Water, bbl/m	1/2006
Ref=	246610
Cum=	
Yield, b/mm	1/2006
Ref=	0
Cum=	

Antero Resources Corporation  
Exhibit E - 12  
Cause No. 191  
Docket No. 0606-SP-26