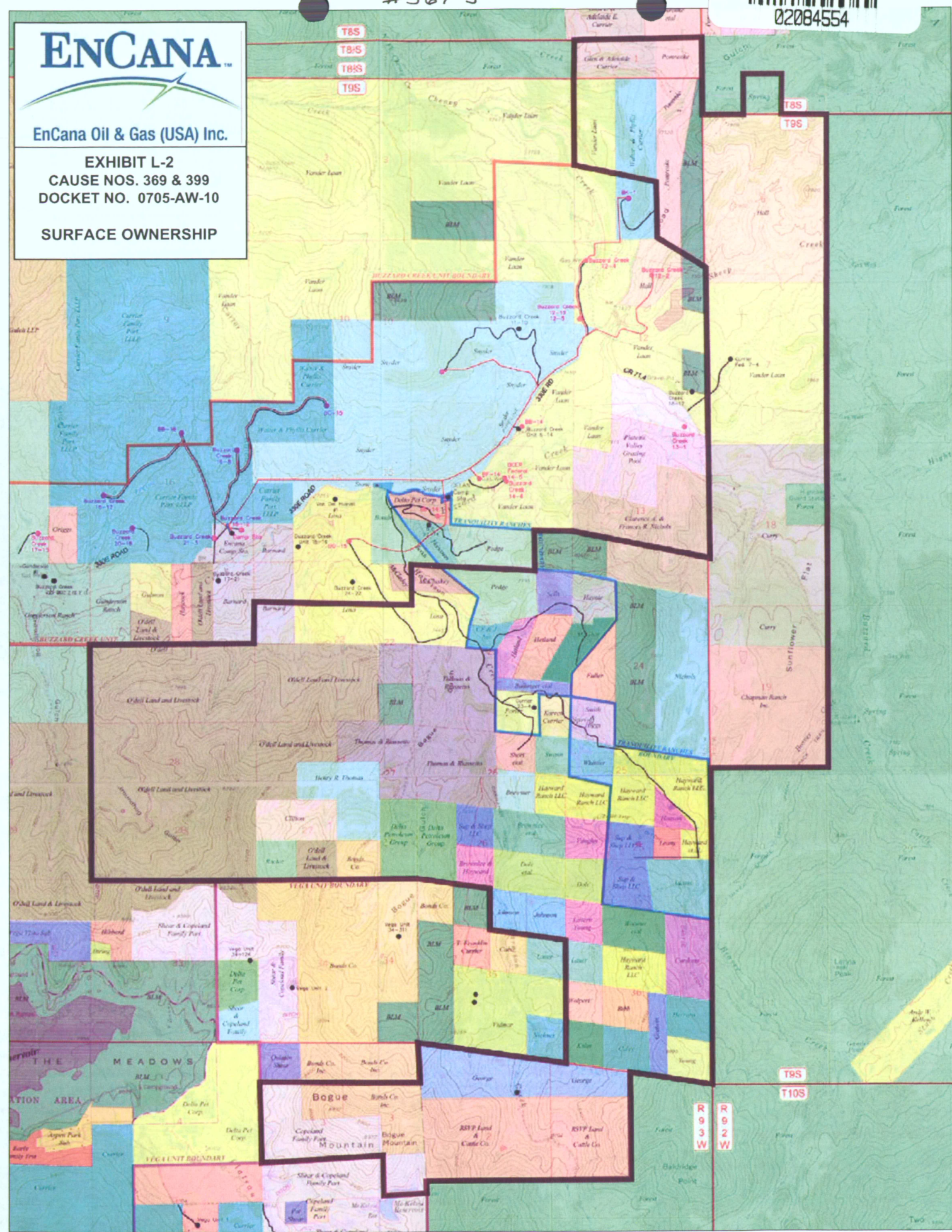
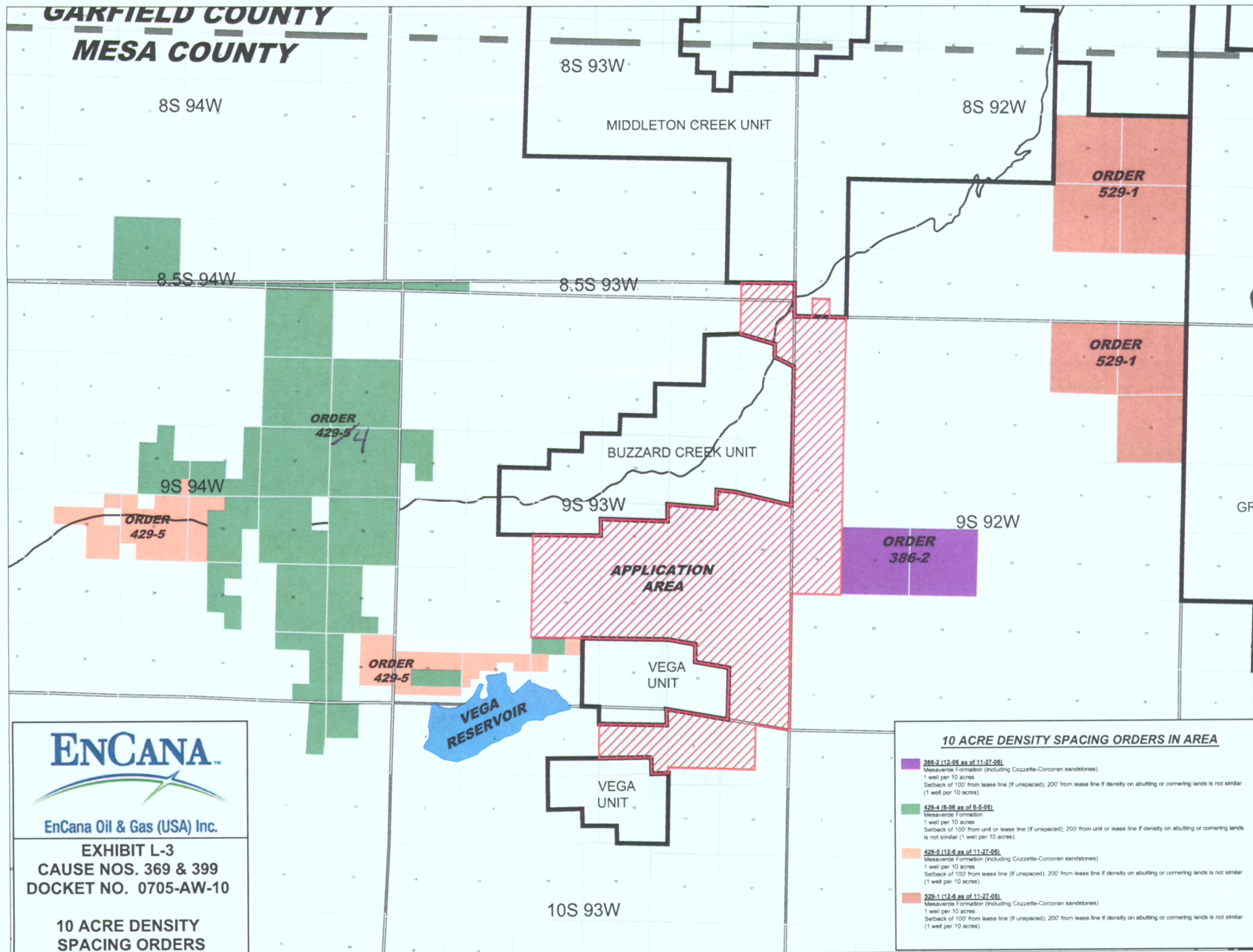




02084554



GARFIELD COUNTY MESA COUNTY



ENCANA™

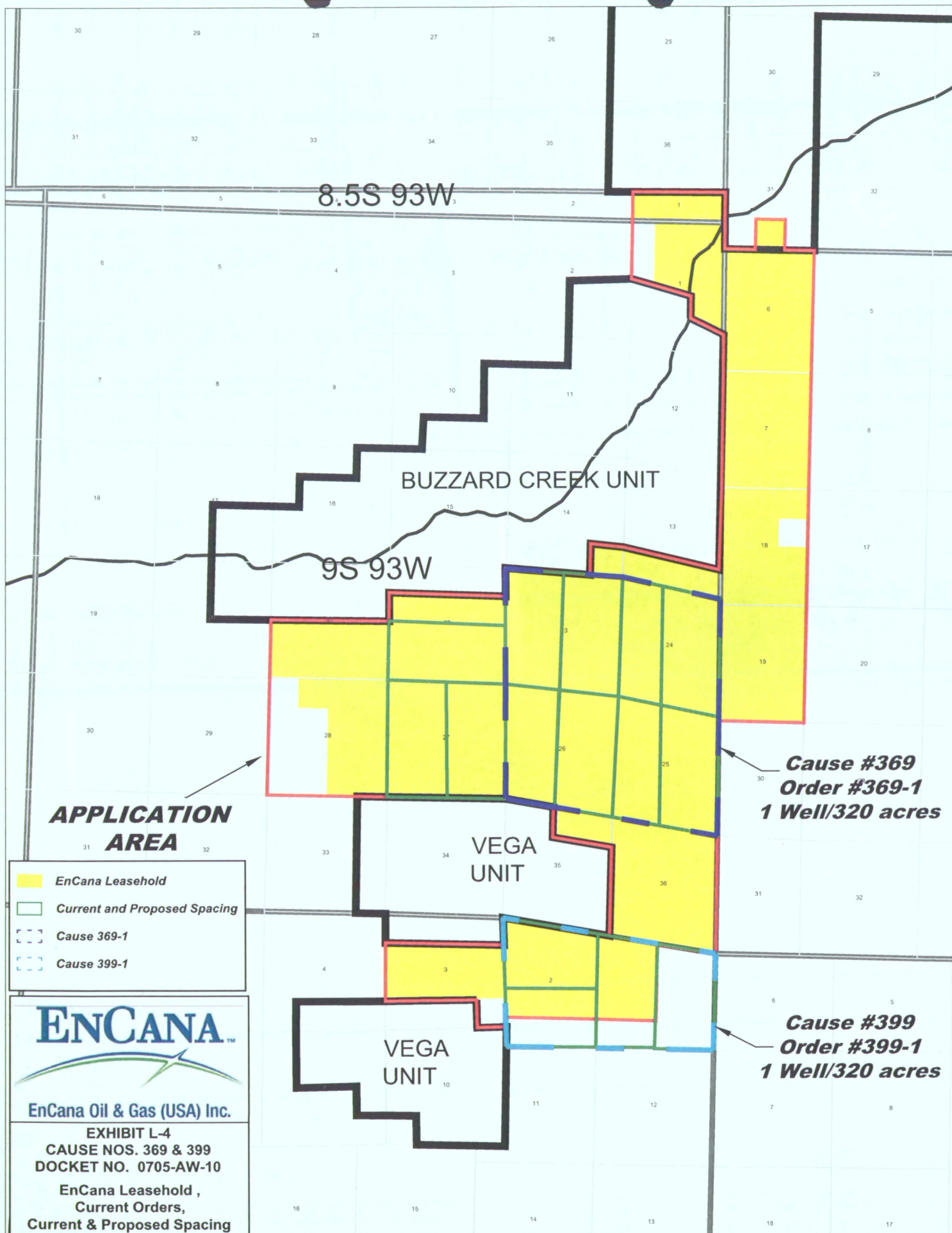
EnCana Oil & Gas (USA) Inc.

EXHIBIT L-3
CAUSE NOS. 369 & 399
DOCKET NO. 0705-AW-10

10 ACRE DENSITY
SPACING ORDERS

10 ACRE DENSITY SPACING ORDERS IN AREA

- 386-2 (12-06 as of 11-27-06)**
Mesaverde Formation (including Cozzette-Corcoran sandstones)
1 well per 10 acres
Setback of 100' from lease line (if unspaced); 200' from lease line if density on abutting or cornering lands is not similar (1 well per 10 acres)
- 429-4 (6-06 as of 6-5-06)**
Mesaverde Formation
1 well per 10 acres
Setback of 100' from unit or lease line (if unspaced); 200' from unit or lease line if density on abutting or cornering lands is not similar (1 well per 10 acres)
- 429-5 (12-06 as of 11-27-06)**
Mesaverde Formation (including Cozzette-Corcoran sandstones)
1 well per 10 acres
Setback of 100' from lease line (if unspaced); 200' from lease line if density on abutting or cornering lands is not similar (1 well per 10 acres)
- 429-1 (12-06 as of 11-27-06)**
Mesaverde Formation (including Cozzette-Corcoran sandstones)
1 well per 10 acres
Setback of 100' from lease line (if unspaced); 200' from lease line if density on abutting or cornering lands is not similar (1 well per 10 acres)



Stratigraphic Chart – Buzzard Creek Area

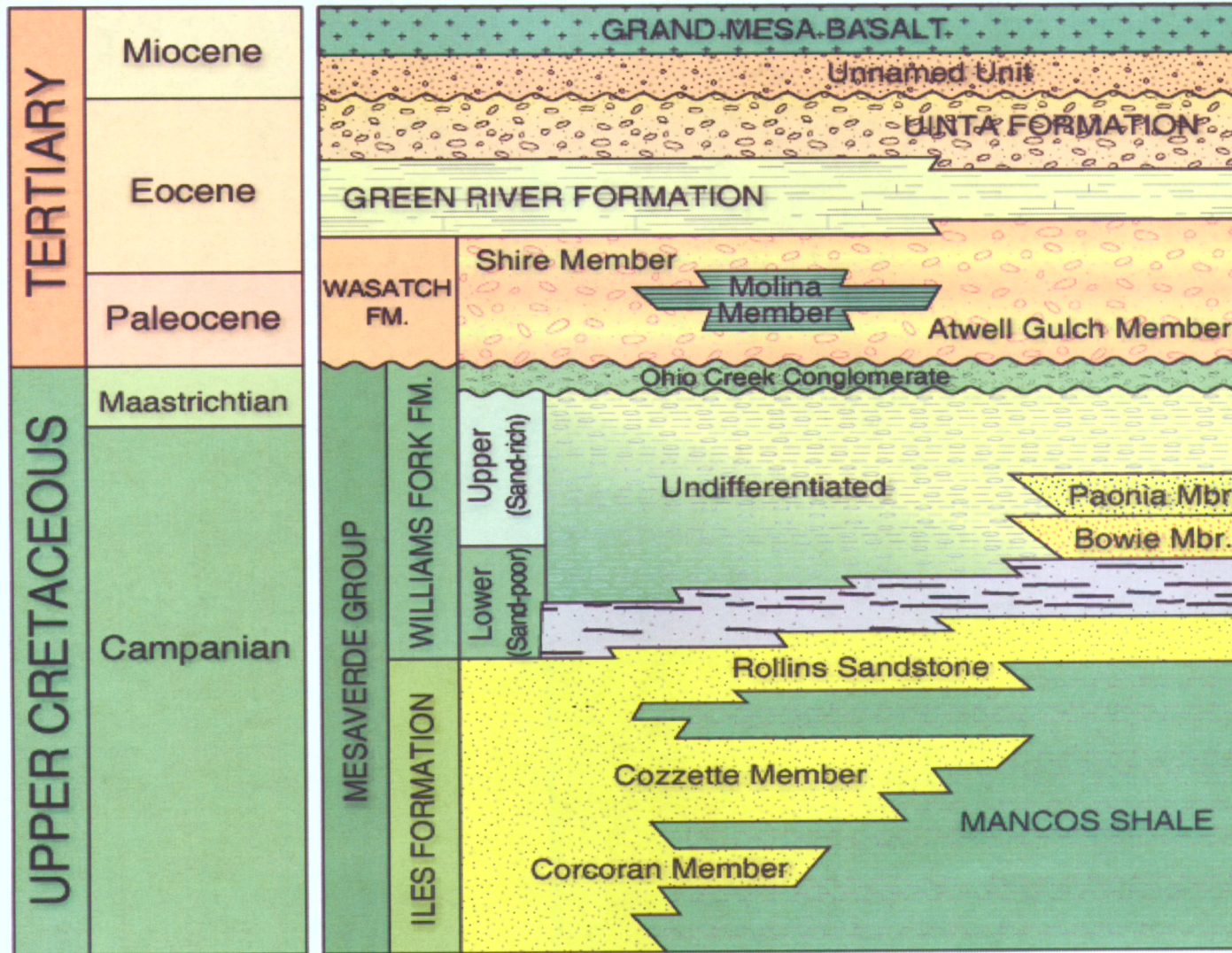
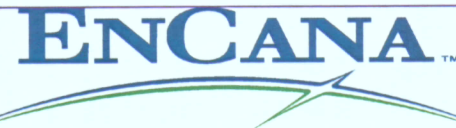
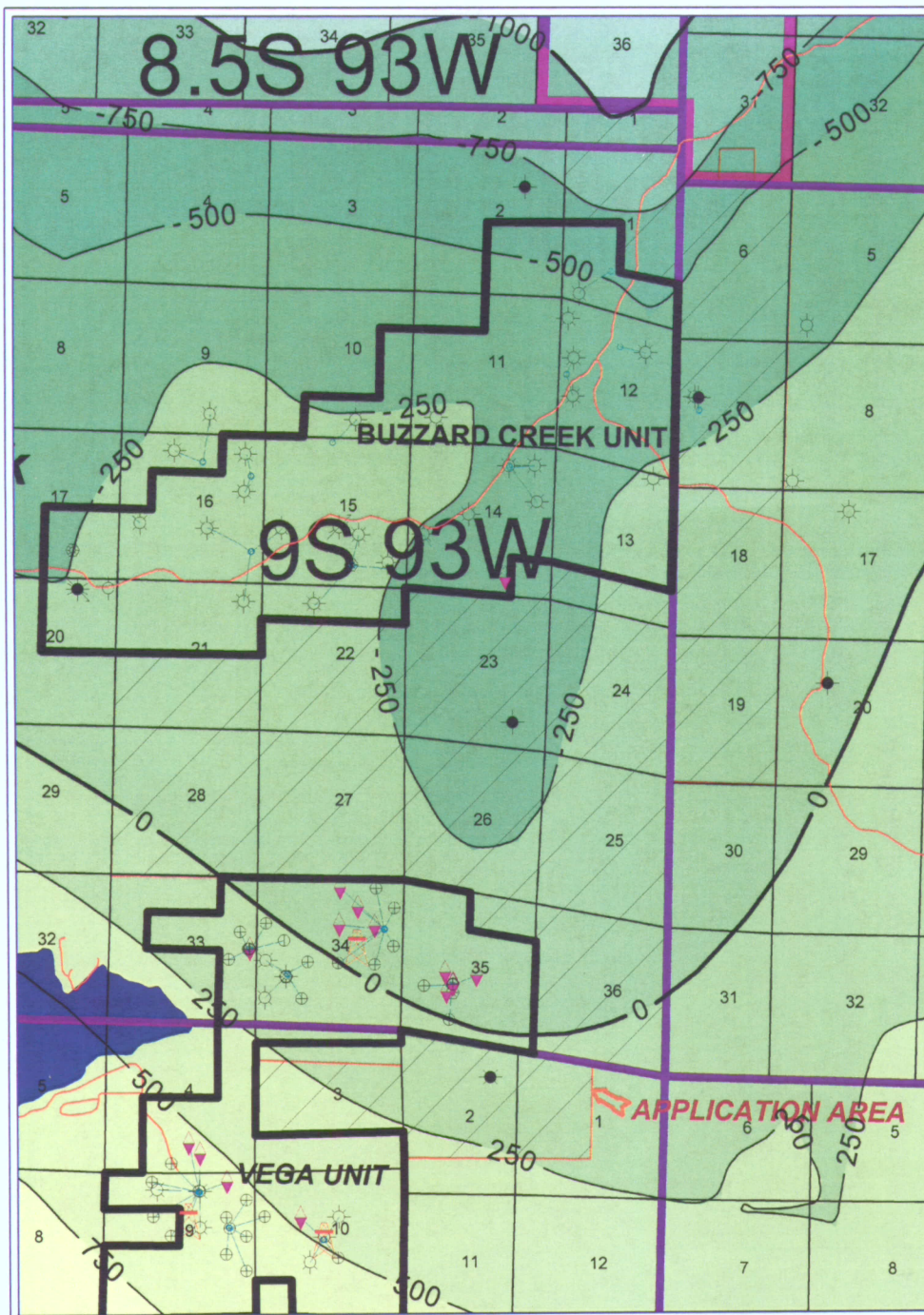


Exhibit G-1
Cause Nos. 369 and 399
Docket No. 0705-AW-10



EnCana Oil & Gas (USA) Inc.

Piceance Basin Development

BUZZARD CREEK AREA

ROLLINS

STRUCTURE



CONTOURS

FMTOPS - ROLLINS [GDC] - Top Rollins SS
gdc_So_Piceance_FMTOPSROLLINGDC.GRD
Contour Interval = 250

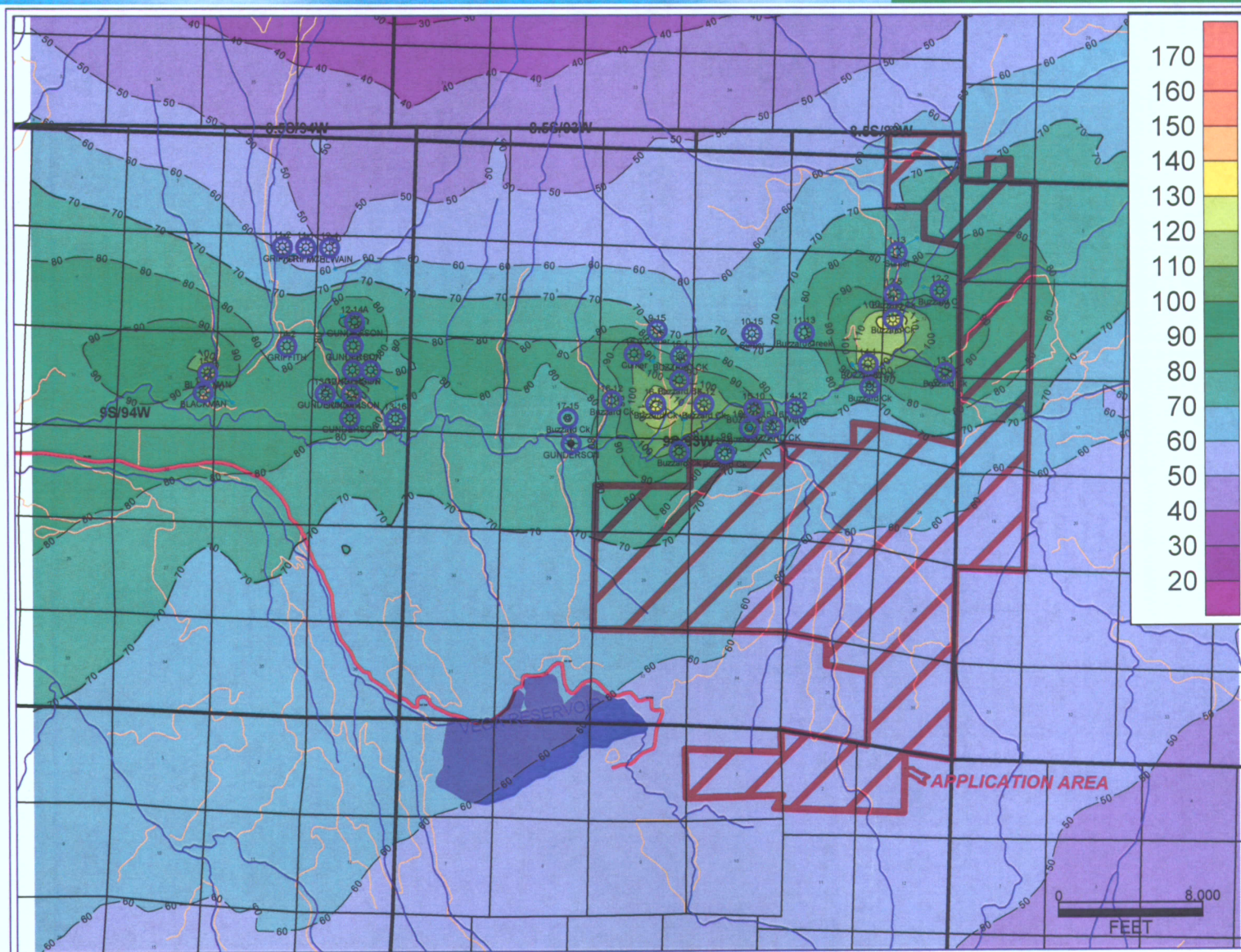


REMARKS

EXHIBIT G-2
CAUSE NOS. 369 and 399
DOCKET NO. 0705-AW-10

By: GDC

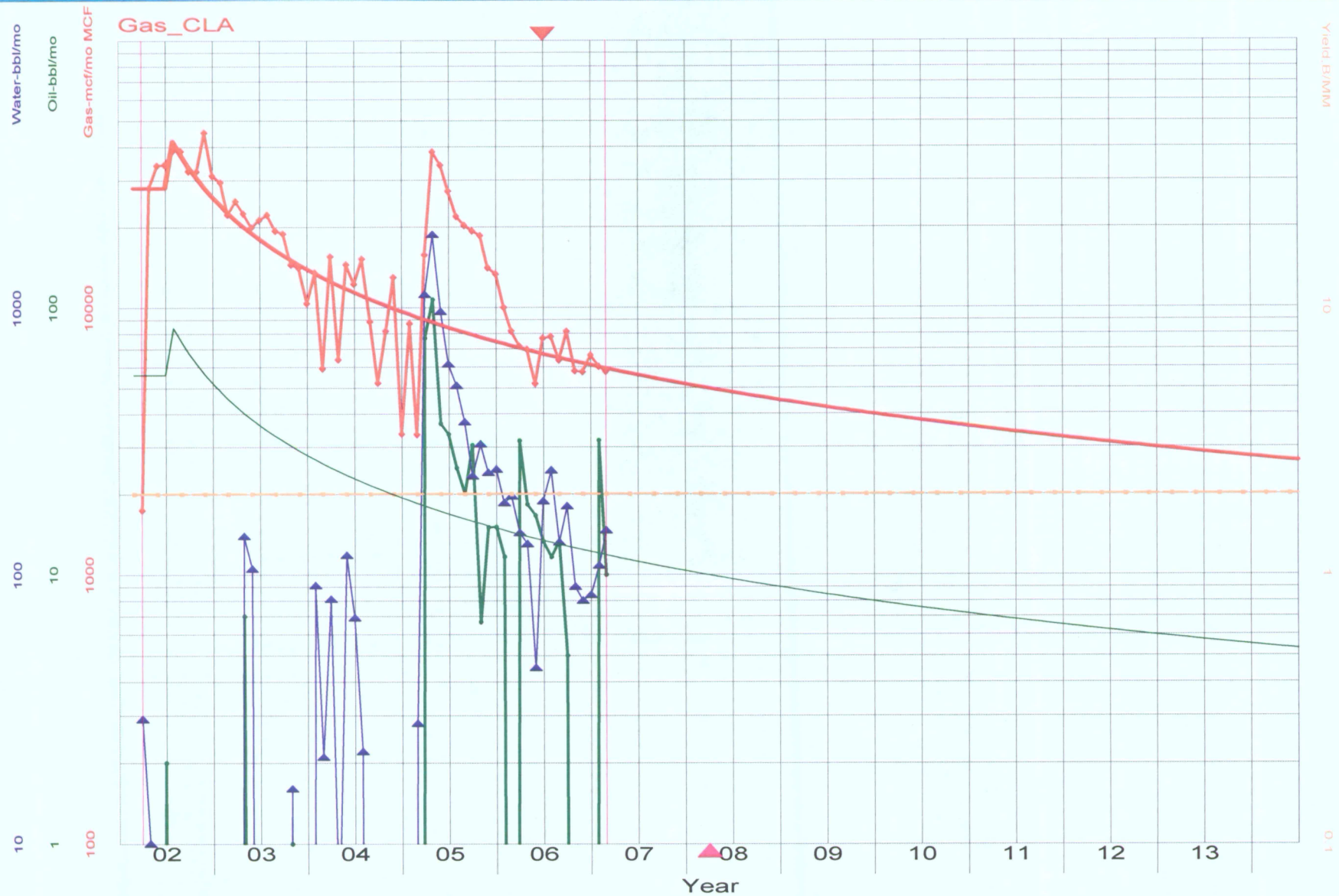
April 24, 2007



PETRA 04/25/2007 12:52:51 PM

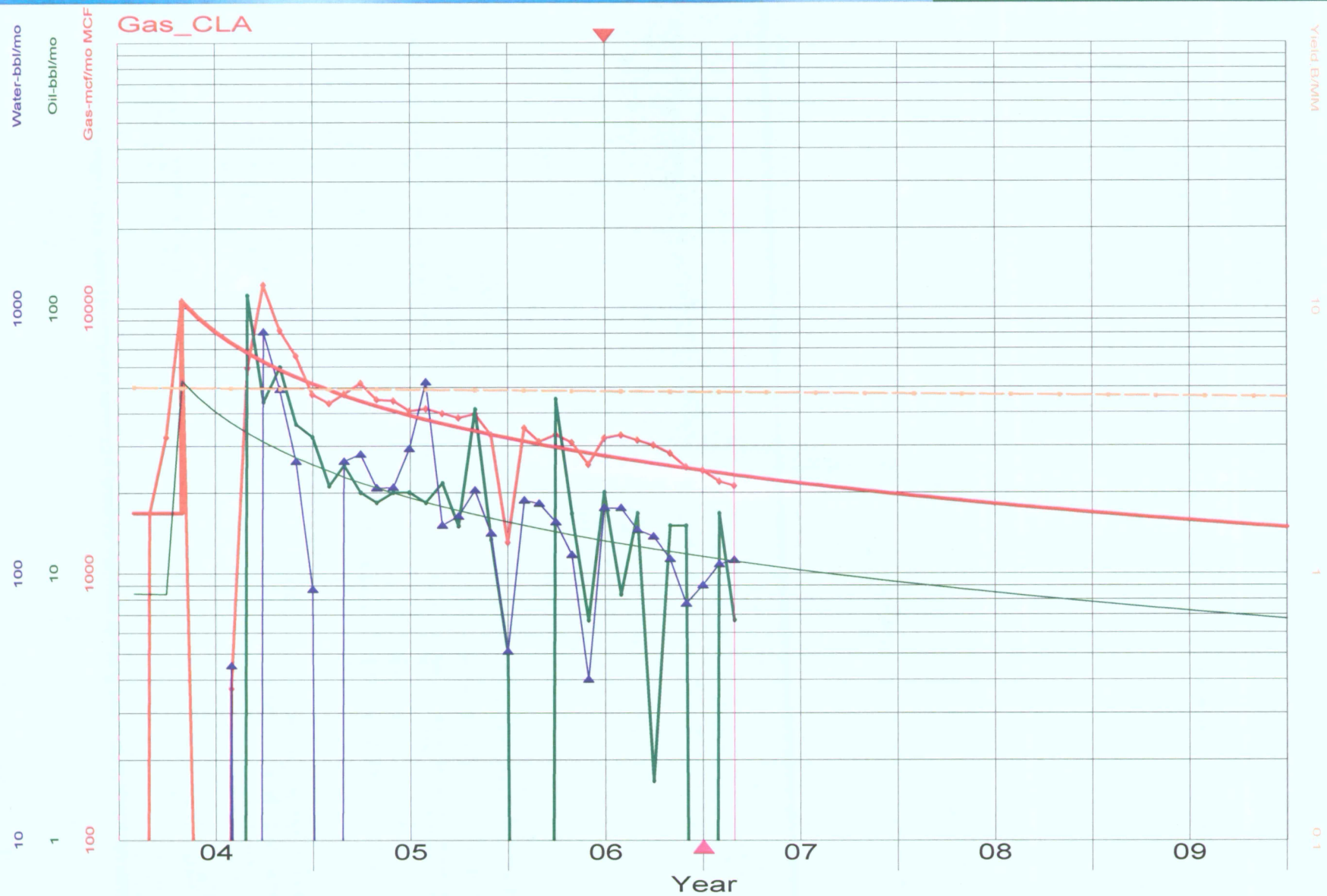
CAUSE NOS. 369 and 399
DOCKET NO. 0705-AW-10

EXHIBIT E-1
OGIP Contour Map – Application Area and Surrounding Lands



CAUSE NOS. 369 and 399
DOCKET NO. 0705-AW-10

EXHIBIT E-4
1.8 Bcfe Analog Well



CAUSE NOS. 369 and 399
DOCKET NO. 0705-AW-10

EXHIBIT E-5
0.4 Bcfe Analog Well

ORIGINAL

85 93W

301

85/92W

ORDER
529-1

ORDER
529-1

ORDER
529-1

ORDER
529-1

ORDER

ORDER


**APPLICATION
AREA**

BUZZARD CREEK UNIT

VEGA

VEGA

VEGA



Encana Oil & Gas (USA) Inc.

EnCana Oil & Gas (USA) Inc.

~~10S/94W~~

10S/93W

ORIGINAL

10 ACRE SPACING ORDERS IN AREA

386-2 (12-06 as of 11-27-06)
Mesaverde Formation (including Cozzette-Corcoran sandstones)

Setback of 100' from lease line ~~if necessary~~, 200' from lease line if density on abutting or cornering lands is not similar (1 well per 10 acres).

429-4 (6-06 as of 6-5-06)
Mesaverde Formation

Setback of 100' from unit or lease line (if unspaced); 200' from unit or lease line if density on abutting or cornering land is not similar (1 well per 10 acres).

429-5 (12-6 as of 11-27-06)
Mesaverde Formation (including Cozette-Corcoran sandstones)

Setback of 100' from lease line (~~if same~~~~seach~~) 200' from lease line if density on abutting or cornering lands is not similar (1 well per 10 acres).

529-1 (12-6 as of 11-27-06)
Mesaverde Formation (including Cozzette-Corcoran sandstones)

Setback of 100' from lease line ~~(if appropriate)~~, 200' from lease line if density on abutting or cornering lands is not similar (1 well per 10 acres).