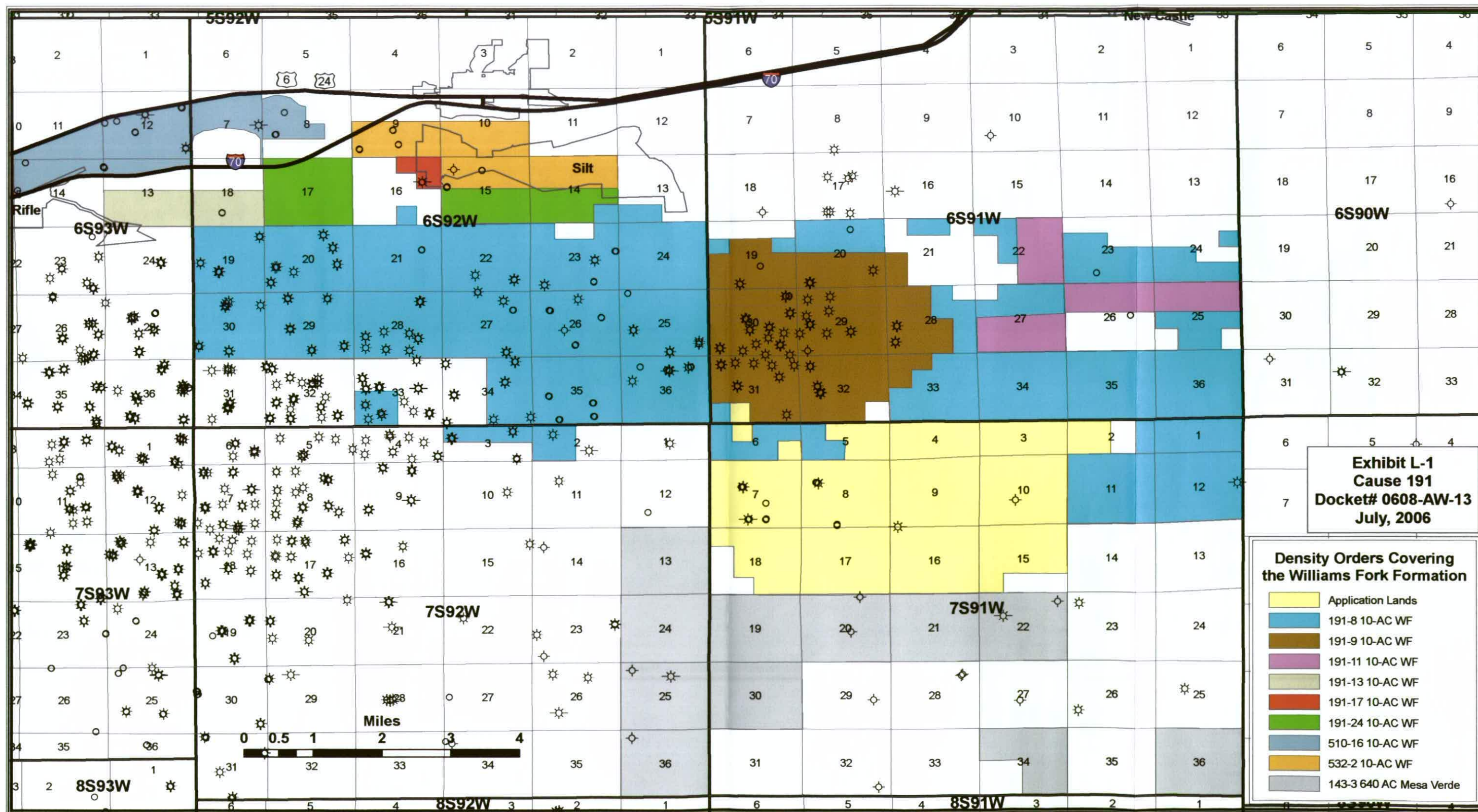




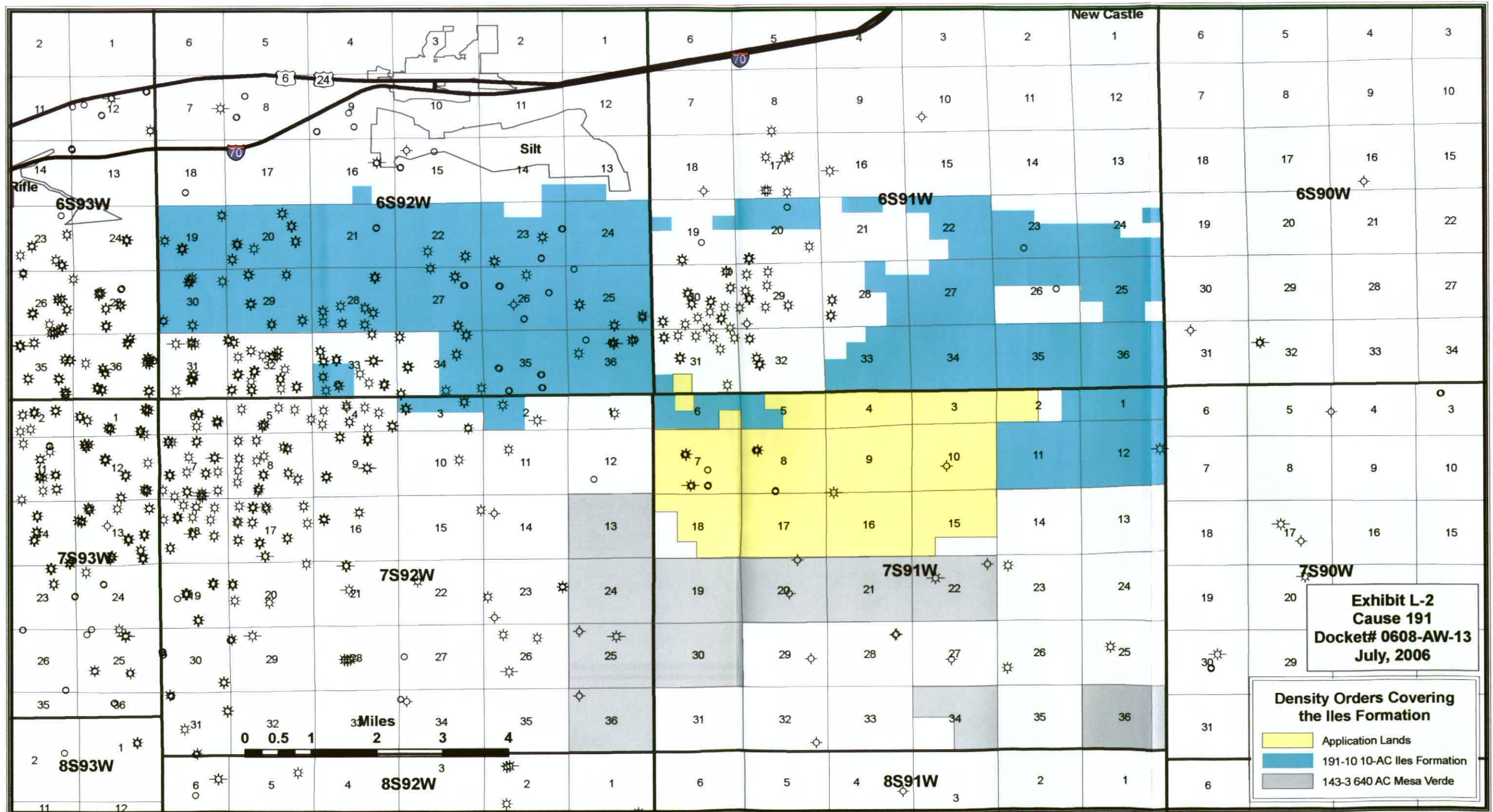
191-32

Windsor Energy Group, LLC 10-Acre Density Application



Windsor Energy Group, LLC 10-Acre Density Application

191-32



Windsor Energy Group, LLC
10-Acre Density Application

191-32

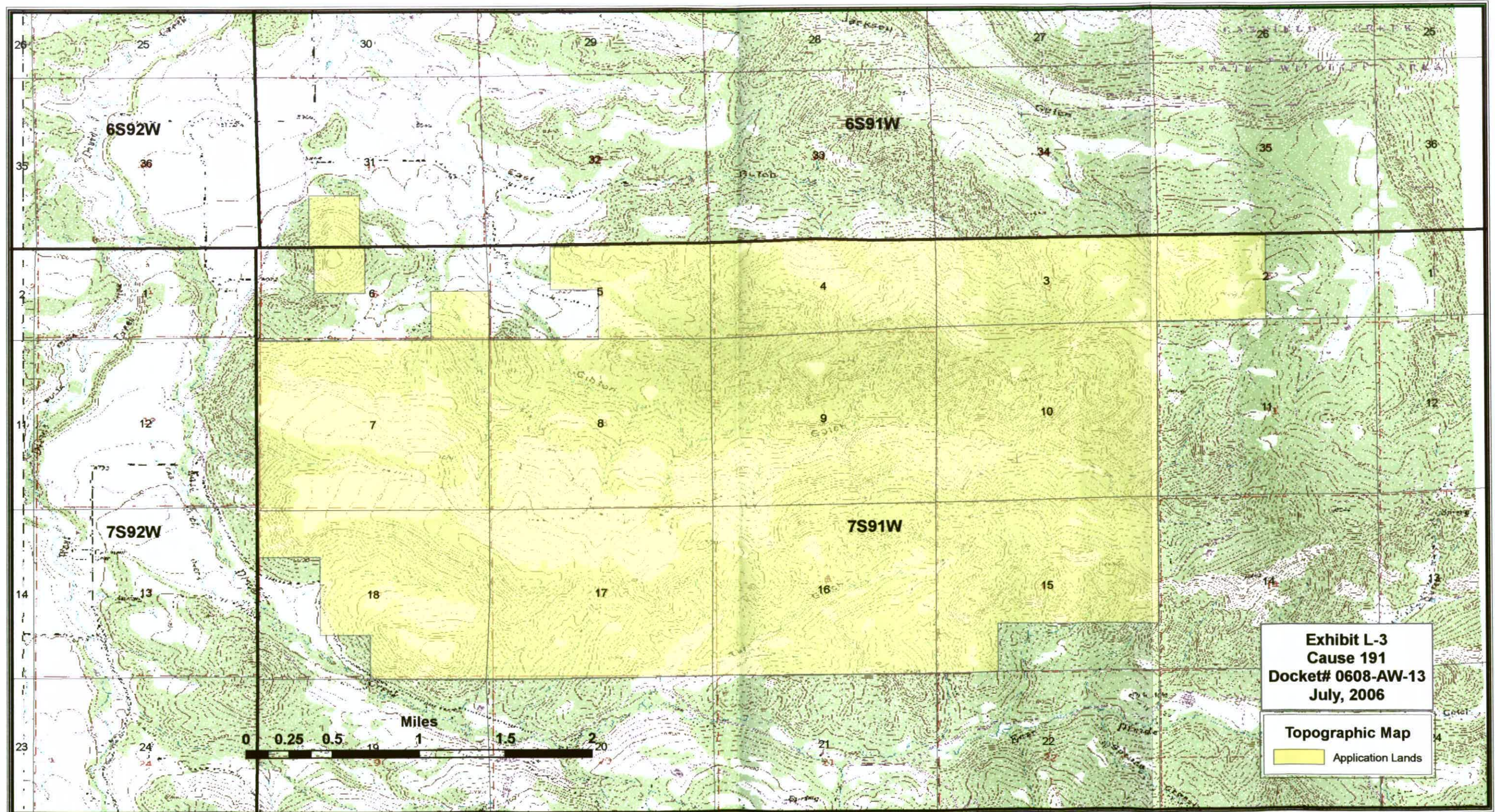
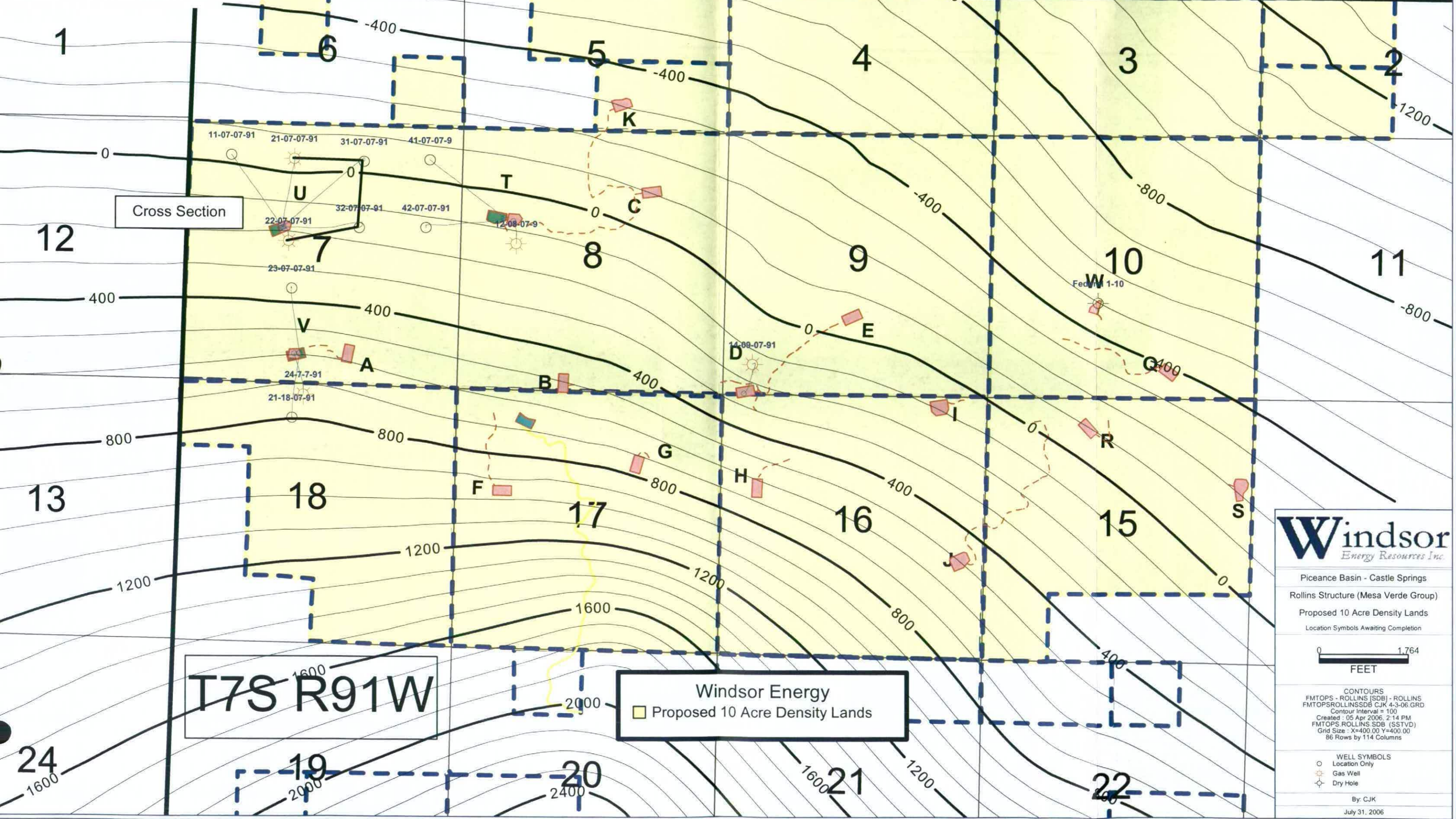


Exhibit Number: G-1
Scale Used: See Map
Applicant Name: Windsor Energy Group, LLC
Cause Number: 191
Docket Number: 0608-AW-13
Type of Exhibit: Geology
County / Field Name: Garfield / Mamm Creek

191-32



Windsor
Energy Resources Inc.

Piceance Basin - Castle Springs
Rollins Structure (Mesa Verde Group)
Proposed 10 Acre Density Lands
Location Symbols Awaiting Completion

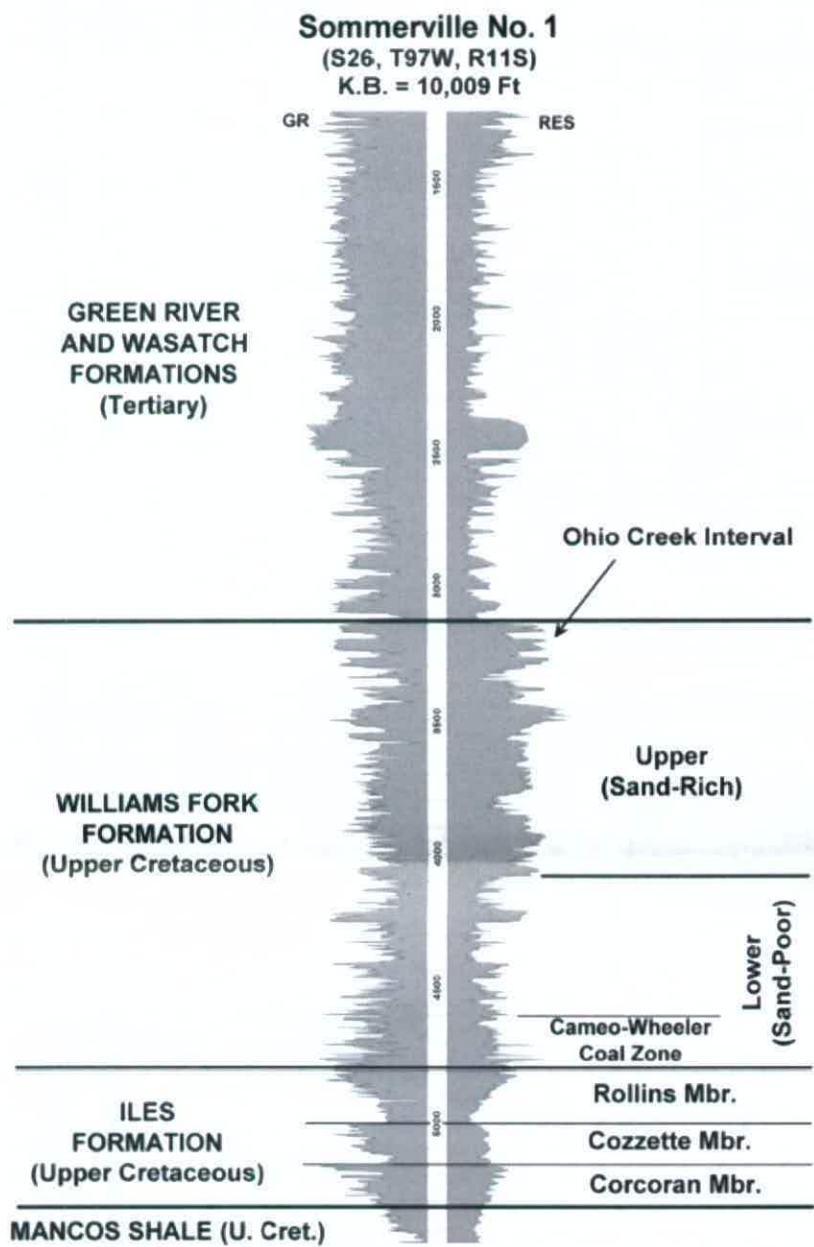
0 1,764
FEET

CONTOURS
FMTOPS - ROLLINS (SDB) - ROLLINS
FMTOPSROLLINSDB CJK 4-3-06.GRD
Contour Interval = 100
Created : 05 Apr 2006, 2:14 PM
FMTOPS.ROLLINS.SDB (SSTVD)
Grid Size : X=400.00 Y=400.00
86 Rows by 114 Columns

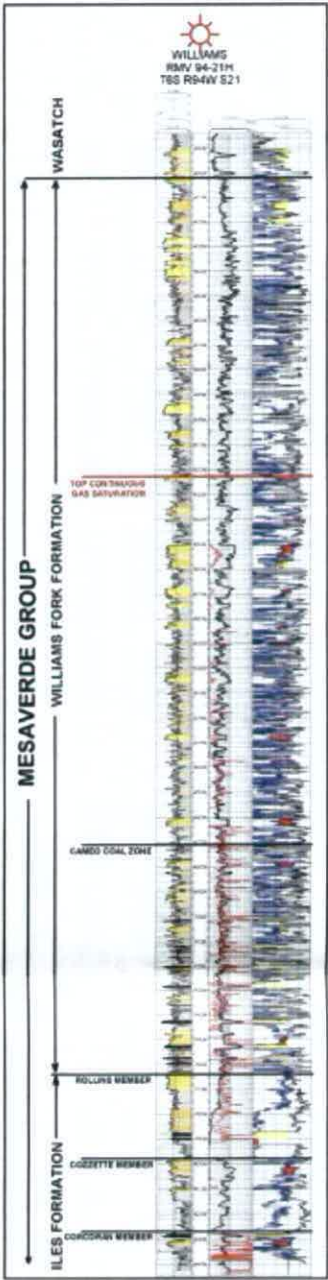
WELL SYMBOLS
○ Location Only
⊙ Gas Well
⊙ Dry Hole

By: CJK
July 31, 2006

Exhibit G-2, Cause Number 191- Windsor Energy
Type Log Section



3a



3b

Exhibit Number: G-2
Scale Used: See Map
Applicant Name: Windsor Energy Group, LLC
Cause Number: 191
Docket Number: 0608-AW-13
Type of Exhibit: Geology
County / Field Name: Garfield / Mamm Creek

(Figure 3) Two “type-log” examples for the Piceance Basin. Both show the characteristic low resistivity of the overlying Wasatch Formation over the Mesaverde Group (Williams Fork Formation)

3b from :The Rocky Mountain Association of Geologists Piceance Basin 2003 Guidebook
Editors: K. M. Peterson, T. M. Olson and D. S. Anderson, Chapter 14, Applications of Borehole Images in the Piceance Basin, Randy Koepsell, Stephen P. Cumella, David Uhl

3a From: The Rocky Mountain Association of Geologists Piceance Basin 2003 Guidebook, Editors: K. M. Peterson, T. M. Olson and D. S. Anderson, Chapter 18, STRATIGRAPHIC ARCHITECTURE AND RESERVOIR CHARACTERISTICS OF THE MESAVERDE GROUP, SOUTHERN PICEANCE BASIN, COLORADO, R. Cole, S. Cumella

05045092870000 CSF 22-07-07-91
05045119840000 CSF 32-07-07-91
05045119830000 CSF 31-07-07-91
05045111220000 CSF 21-07-07-91

191-32

Williams Fork
Formation
Mesa Verde
Group

Iles Form.
Rollins Sand

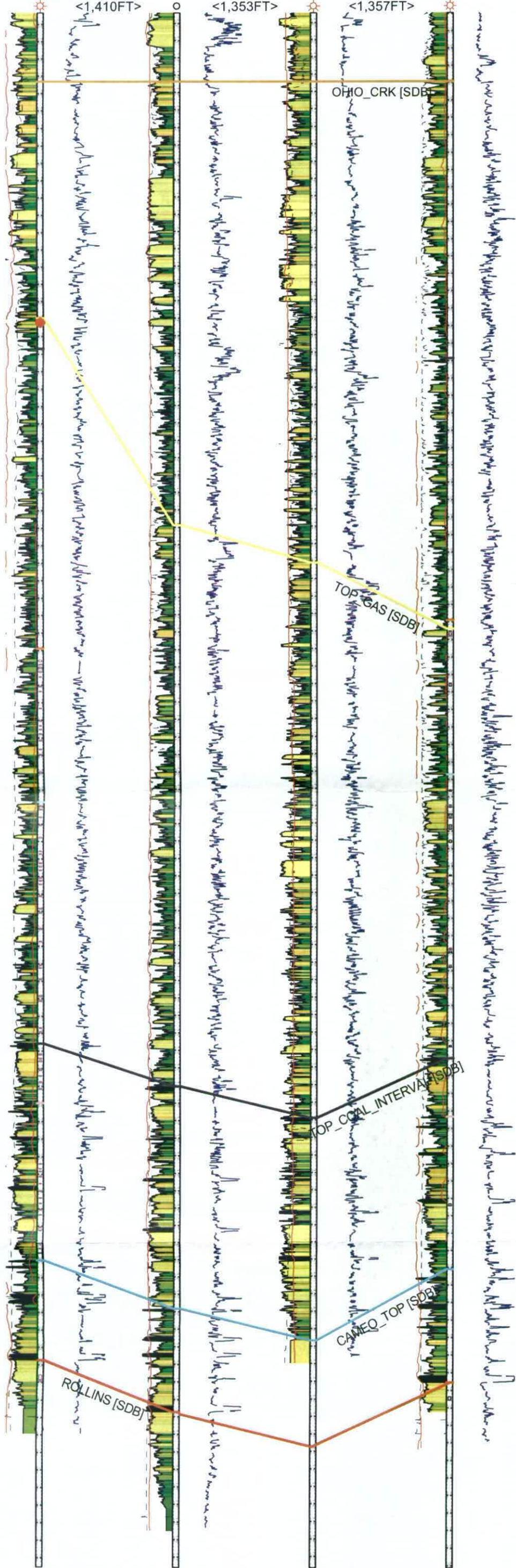


Exhibit Number: G-3
Scale Used: See Map
Applicant Name: Windsor Energy Group, LLC
Cause Number: 191
Docket Number: 0608-AW-13
Type of Exhibit: Geology
County / Field Name: Garfield / Mammoth Creek

Windsor
Energy Resources Inc.

Piceance Basin - Castle Springs

Stratigraphic Section - Mesa Verde

Demonstrates Discontinuous Fluvial Sands

Horizontal Scale = 3.2
Vertical Scale = 40.0
Vertical Exaggeration = 0.1x

LOG CURVES
6 16
CALI (IN) CALIPER
0.2 2,000
RDEEP (OHMM) deep resistivity
0 1
VSH_SDB VSH_SDB
0 1
VSH_SDB VSH_SDB
0 1
VSH_SDB VSH_SDB
-160 40
SP (MV) SPONTANEOUS POTENTIAL

TOPS AND MARKERS

TOP GAS SDB
OHIO_CRK SDB
PRICE_COAL SDB
MFLUVIAL SDB
LFLUVIAL SDB
UCOASTAL SDB
PALUDAL SDB
CAMEO_TOP SDB
ROLLINS SDB
TOP_COAL_INTERVAL SDB

By: CJK

July 28, 2006 7:57 AM

Excerpt From:
**“Geology of the Basin Centered Gas
Accumulation - Piceance Basin”**

RMAG Guidebook - Chapter 10

Discontinuous Fluvial Sand Deposition

Demonstrating Need for 10 Acre Spacing

Stephen P. Cumella and Douglas B. Ostby

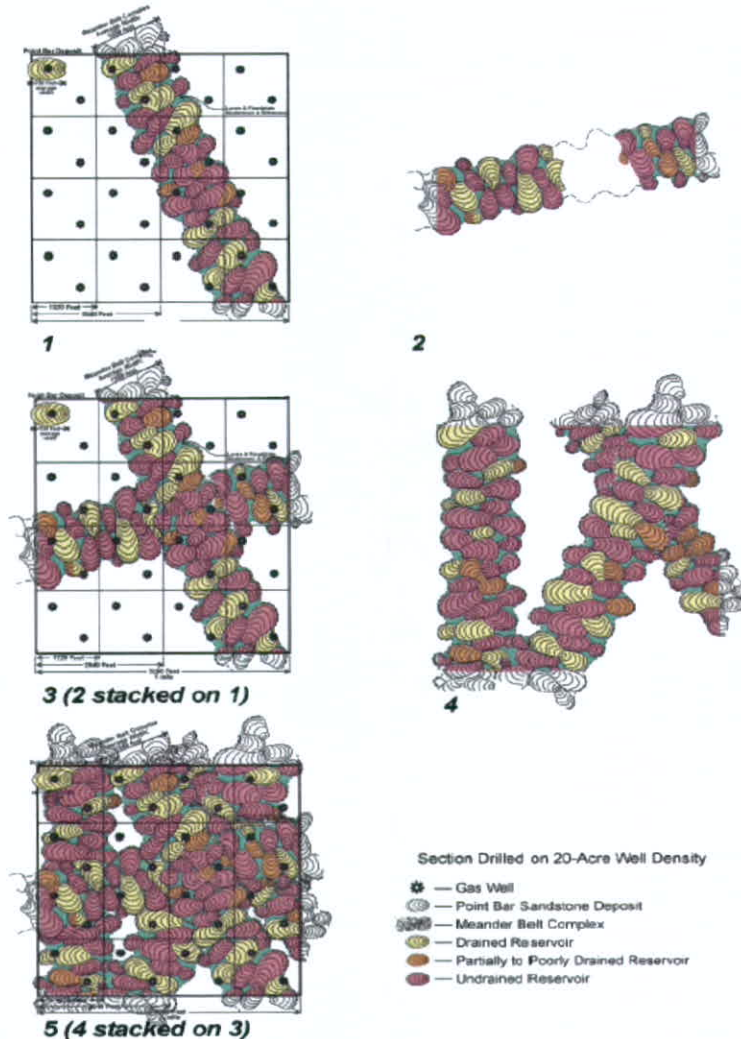


Figure 28. Stacking of hypothetical Williams Fork meanderbelt sandstone reservoirs showing the need for 10-acre density. Figure originally done by Terry Barrett.

Exhibit Number: G-5
Scale Used: See Scale
Applicant name: Windsor Energy Group, LLC.
Exhibit Author Name: C. Krohn
Cause Number: 191
Docket Number: 0608-AW-13
Type of Exhibit: Geology
County/Field Name: Garfield / Mamm Creek

Excerpt from:
"Geology of the Basin Centered Gas Accumulation – Piceance Basin"
RMAG Guidebook - Chapter 10

Satellite Photo of Abandoned Oxbows and Point Bars in Mississippi River Valley.

Demonstrates Discontinuity of Sand Units in Fluvial River Valleys like the Piceance Basin during the Cretaceous.

Stephen P. Cumella and Douglas B. Ostby

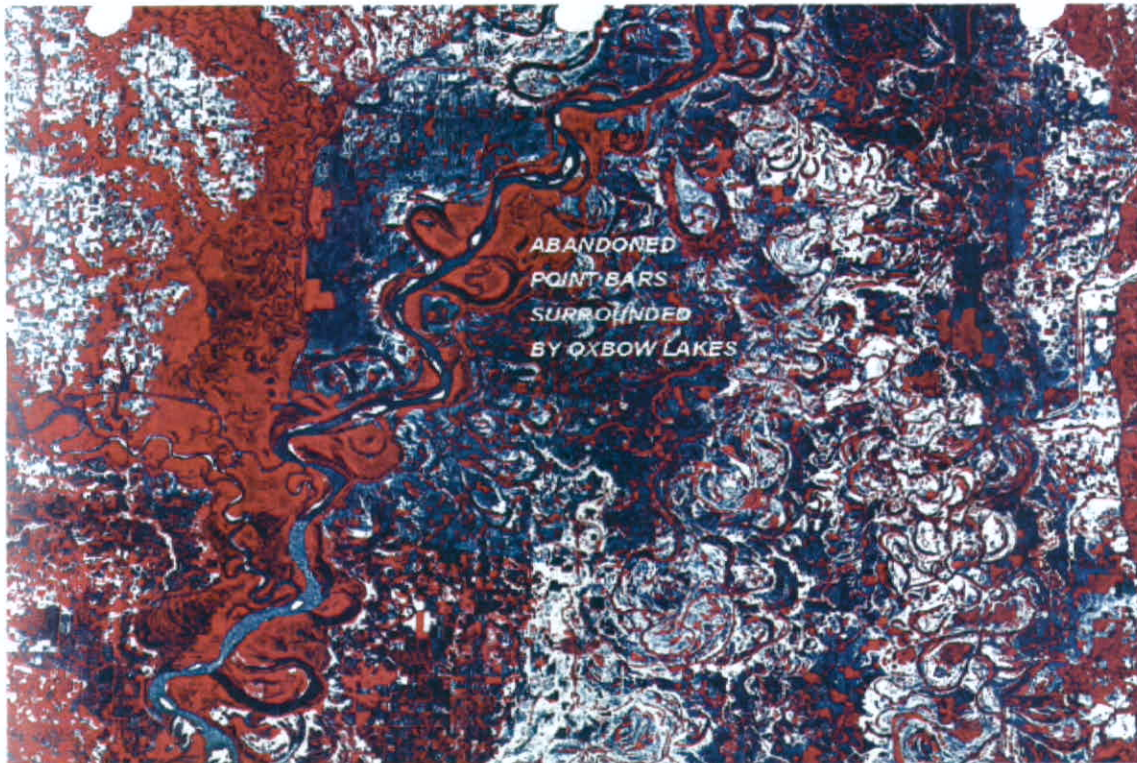


Figure 27. Satellite photograph of Mississippi River valley.

Exhibit Number: G-6
Scale Used: NA
Applicant name: Windsor Energy Group, LLC.
Exhibit Author Name: C. Krohn
Cause Number: 191
Docket Number: 0608-AW-13
Type of Exhibit: Geology
County/Field Name: Garfield / Mamm Creek

Archived Commission Exhibit:

Bill Barrett Incorporated

Gibson Gulch Federal Unit

12-24-2004

Exhibit G6

Exhibit Showing Discontinuous Mesa Verde Fluvial Sand - 10 Acre Spacing

- Presented to the Colorado Oil and Gas Commission

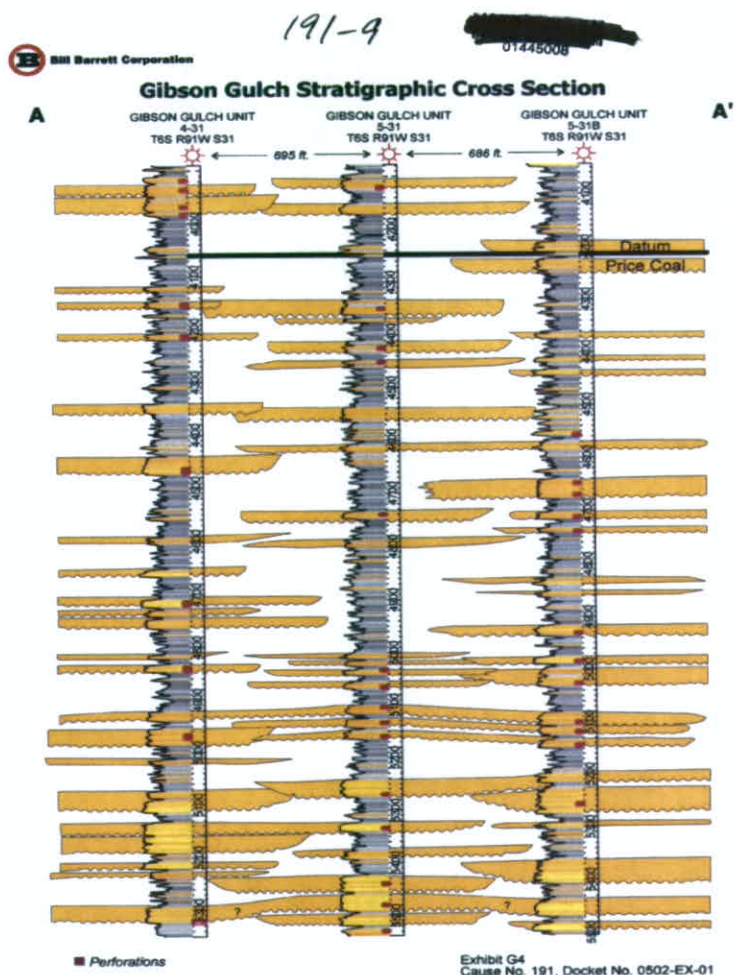


Exhibit Number: G-8
Scale Used: See Scale
Applicant name: Windsor Energy Group, LLC.
Exhibit Author Name: C. Krohn
Cause Number: 191
Docket Number: 0608-AW-13
Type of Exhibit: See Scale
County/Field Name: Garfield / Mamm Creek

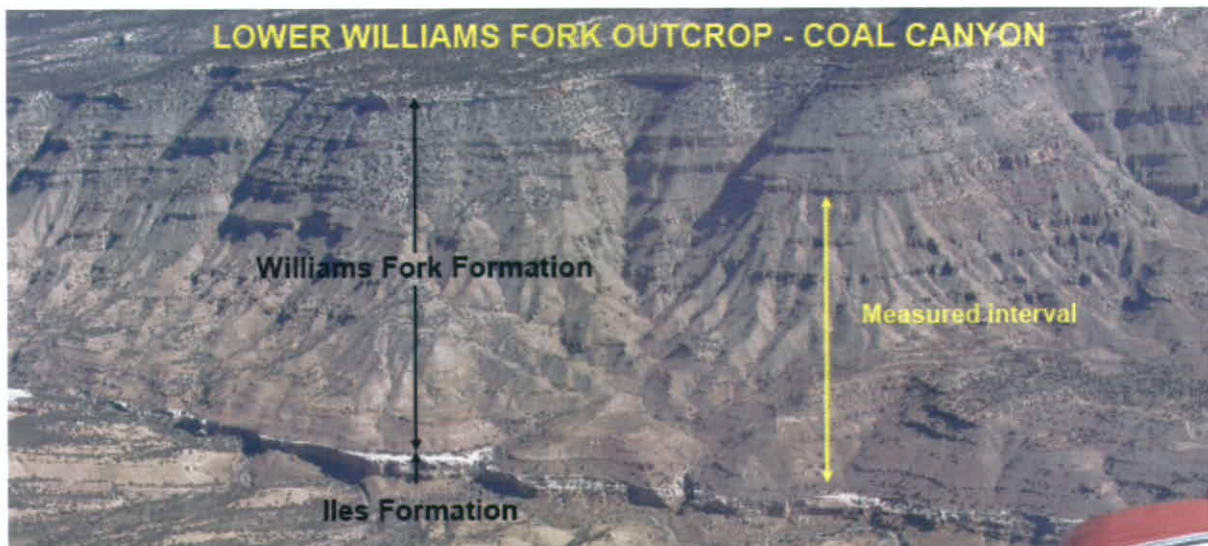
Excerpt From:

"An Overview of the Williams Fork Geologic Model and Supporting Reservoir Engineering Data for 10-Acre Density Development"

Presented to:

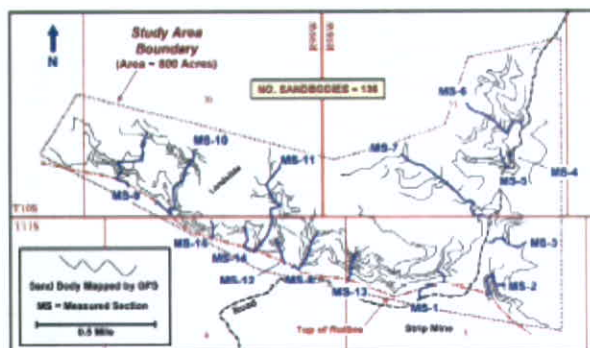
Colorado Oil and Gas Commission
Williams Production RMT Company
April 24, 2006

Demonstrates lenticular and discontinuous Mesa Verde
Sand in the Piceance Basin:



Approximately 24 miles southwest of
Grand Valley Field

Study of excellent outcrop exposures was
undertaken to determine sand body widths



B-8

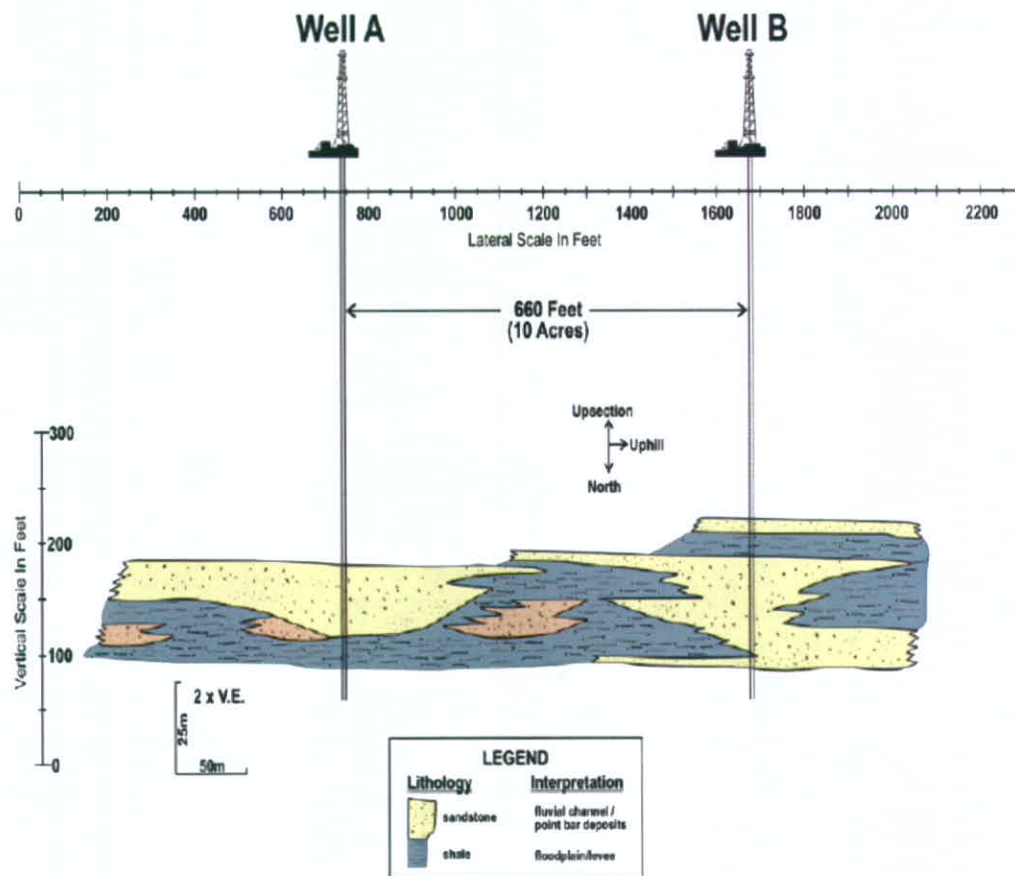
Exhibit Number: G-9
Scale Used: See Scale
Applicant name: Windsor Energy Group, LLC.
Exhibit Author Name: C. Krohn
Cause Number: 191
Docket Number: 0608-AW-13
Type of Exhibit: Geology
County/Field Name: Garfield / Mamm Creek

Excerpt From:
**An Overview of the Williams Fork Geologic Model and Supporting
Reservoir Engineering Data for 10-Acre Density Development**

Presented to:
Colorado Oil and Gas Commission
Williams Production RMT Company
April 24, 2006

Demonstrates Need for 10 Acre Mesa Verde Development

**Williams Fork Sandstone Bodies
With Hypothetical 10-Acre Wells**



Outcrop of lens B, west side of Rifle Gap, modified from Lorenz, 1982 (Pg. 28, Fig. 12).

Exhibit Number: G-12
Scale Used: See Scale
Applicant name: Windsor Energy Group, LLC.
Exhibit Author Name: C. Krohn
Cause Number: 191
Docket Number: 0608-AW-13
Type of Exhibit: Geology
County/Field Name: Garfield / Mamm Creek

PowerTools Map

Project: C:\Documents and Settings\jhenry\Desktop\PowerTools\Piceance.mdb

Date: 7/20/2006
Time: 9:37 AM

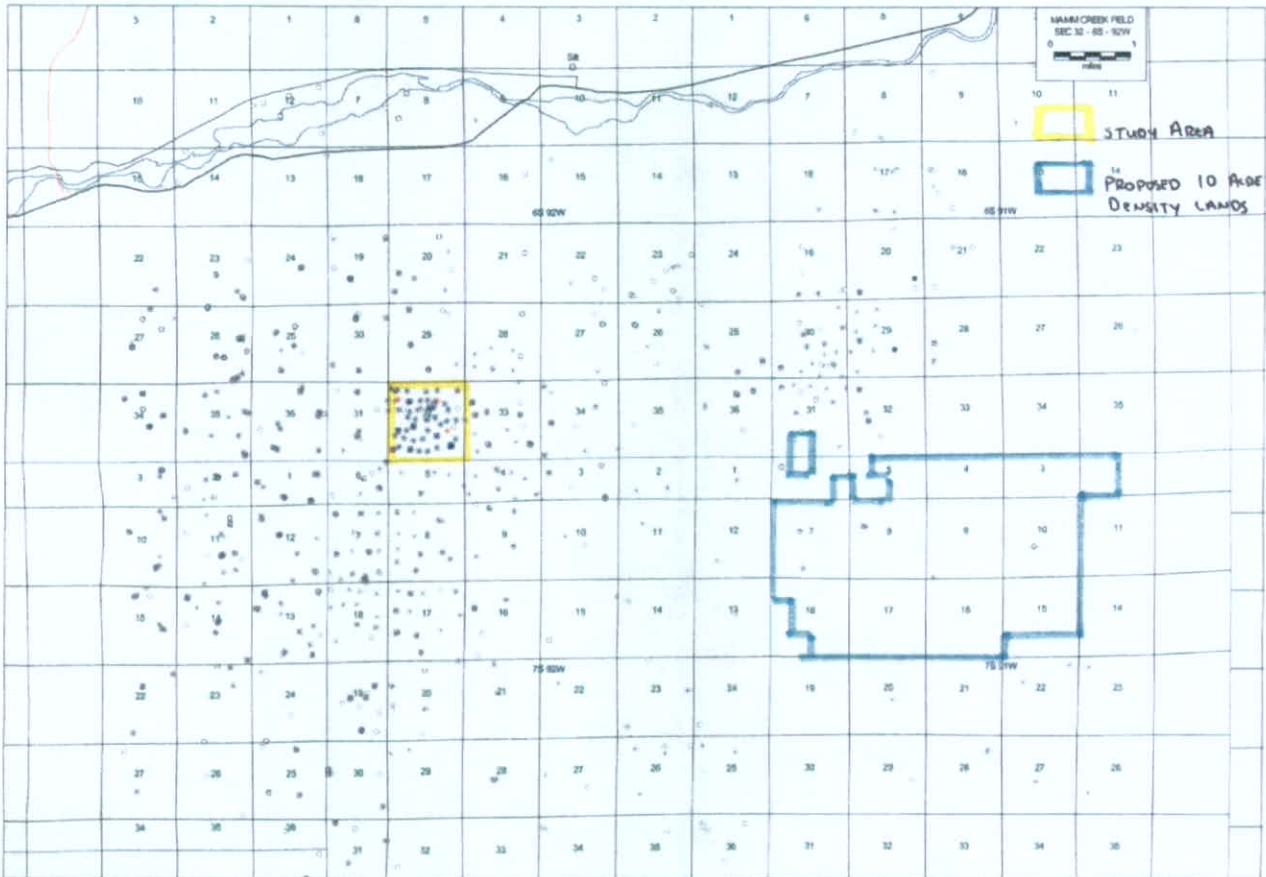


Exhibit Number: E-4
Scale Used: NA
Applicant name: Windsor Energy Group, LLC.
Exhibit Author Name: J. Henry
Cause Number: 191
Docket Number: 0608-AW-13
Type of Exhibit: Engineering
County/Field Name: Garfield / Mamm Creek