

#527-4



**T2S R98W**

Whiting Oil & Gas Corp: 50%  
ExxonMobil Production Co: 24.5%  
Williams Production Co: 25.5%



**Whiting Oil & Gas Corporation**

Exhibit: L1

Cause No: 527

Docket No: 0708-SP-20

**Sulphur Creek, Piceance Basin**

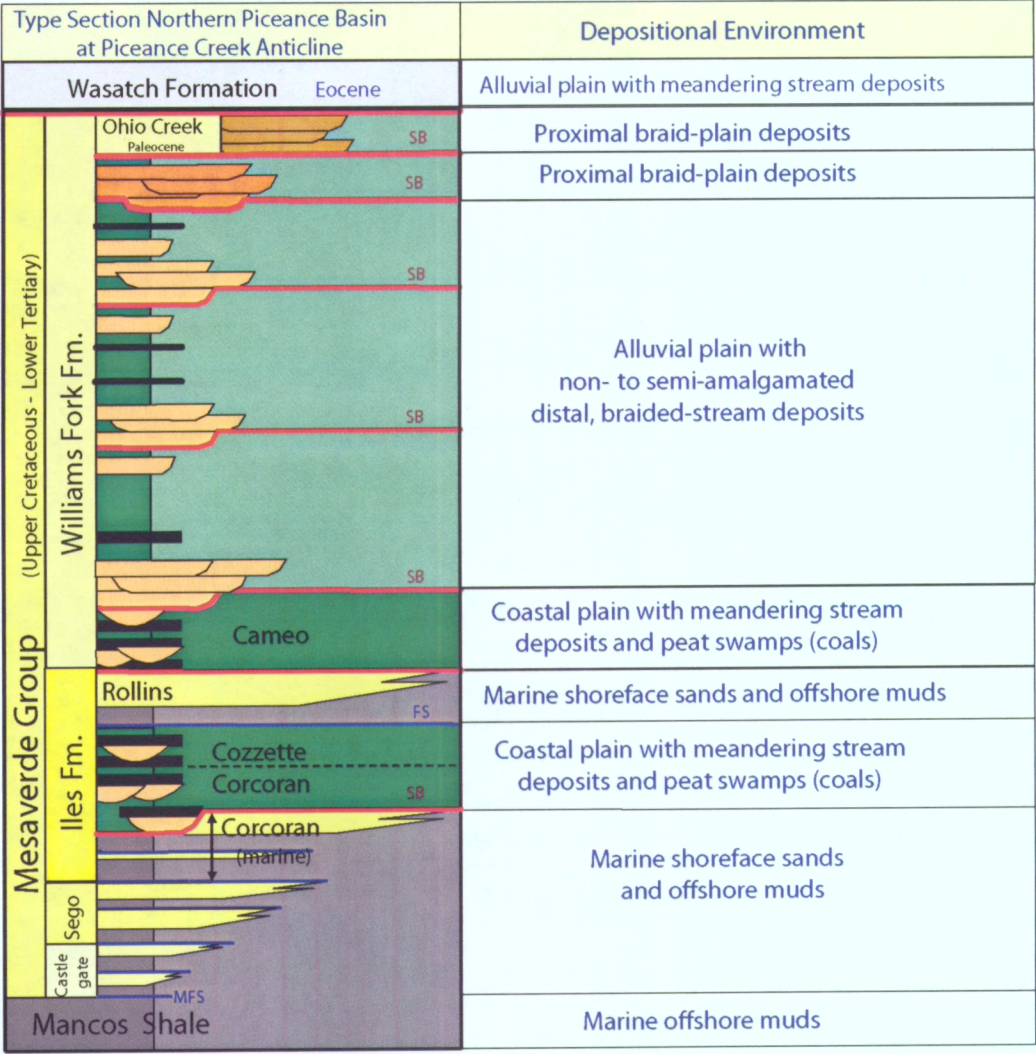
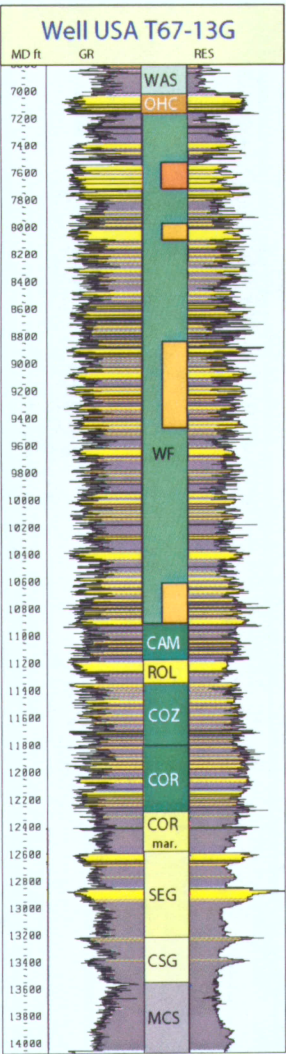
WOGC lles & Sego setback  
application area

**T3S R98W**





API:051030843100  
T2S R97W S13 SWSE



Type log and generalized depositional environments for the Mesaverde Group.

Modified from Patterson, P.E., K. Kronmueller, and T.D. Davies, 2003, Sequence stratigraphy of the Mesaverde Group and Ohio Creek Conglomerate, northern Piceance Basin, Colorado, in K.M. Peterson, T.M. Olson, and D.S. Anderson, eds., Piceance Basin 2003 Guidebook: RMAG, Denver, p. 115-128.

Whiting Petroleum Corporation

EXHIBIT: G4  
CAUSE NO. 527  
DOCKET NO. 0708-SP-20

**Northern Piceance Basin**  
Generalized depositional environments for the Mesaverde Group.



