

112-180

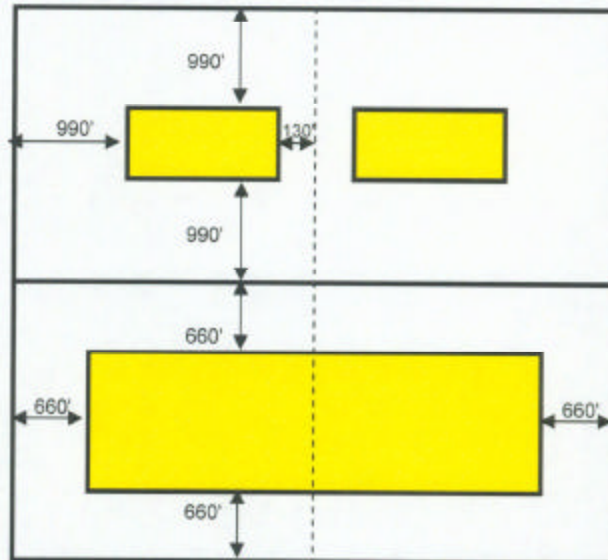


# 80-ACRE INFILL PROPOSED BOTTOMHOLE LOCATION SETBACK

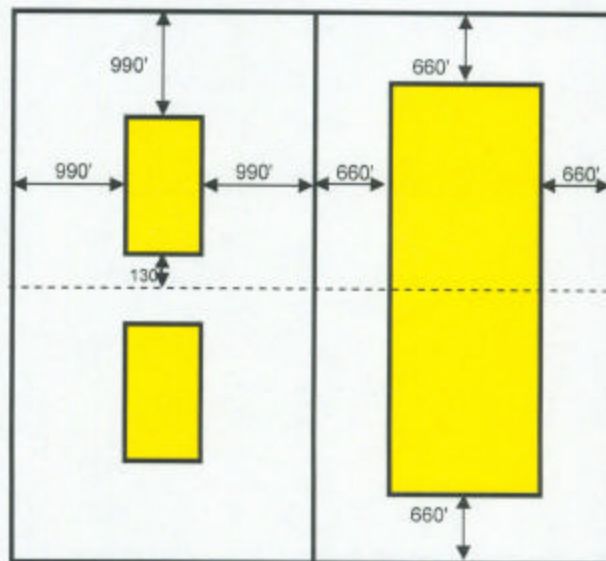
LAYDOWN

Current: Setback 990' from spacing unit boundary and 130' from internal quarter section line

Proposed: Setback 660' from spacing unit boundary with no setback from internal quarter section line



STANDUP

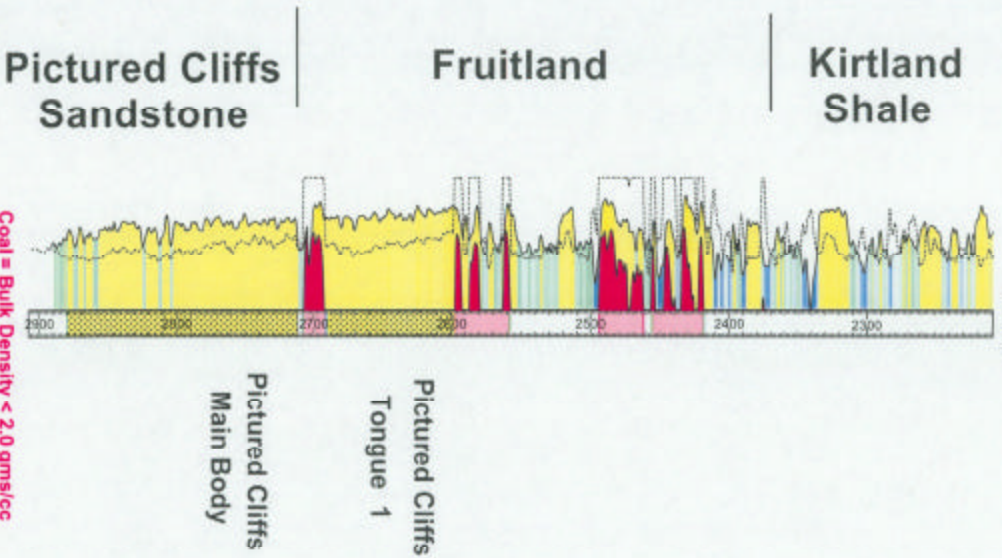


# Fruitland Type Log

65067073170000



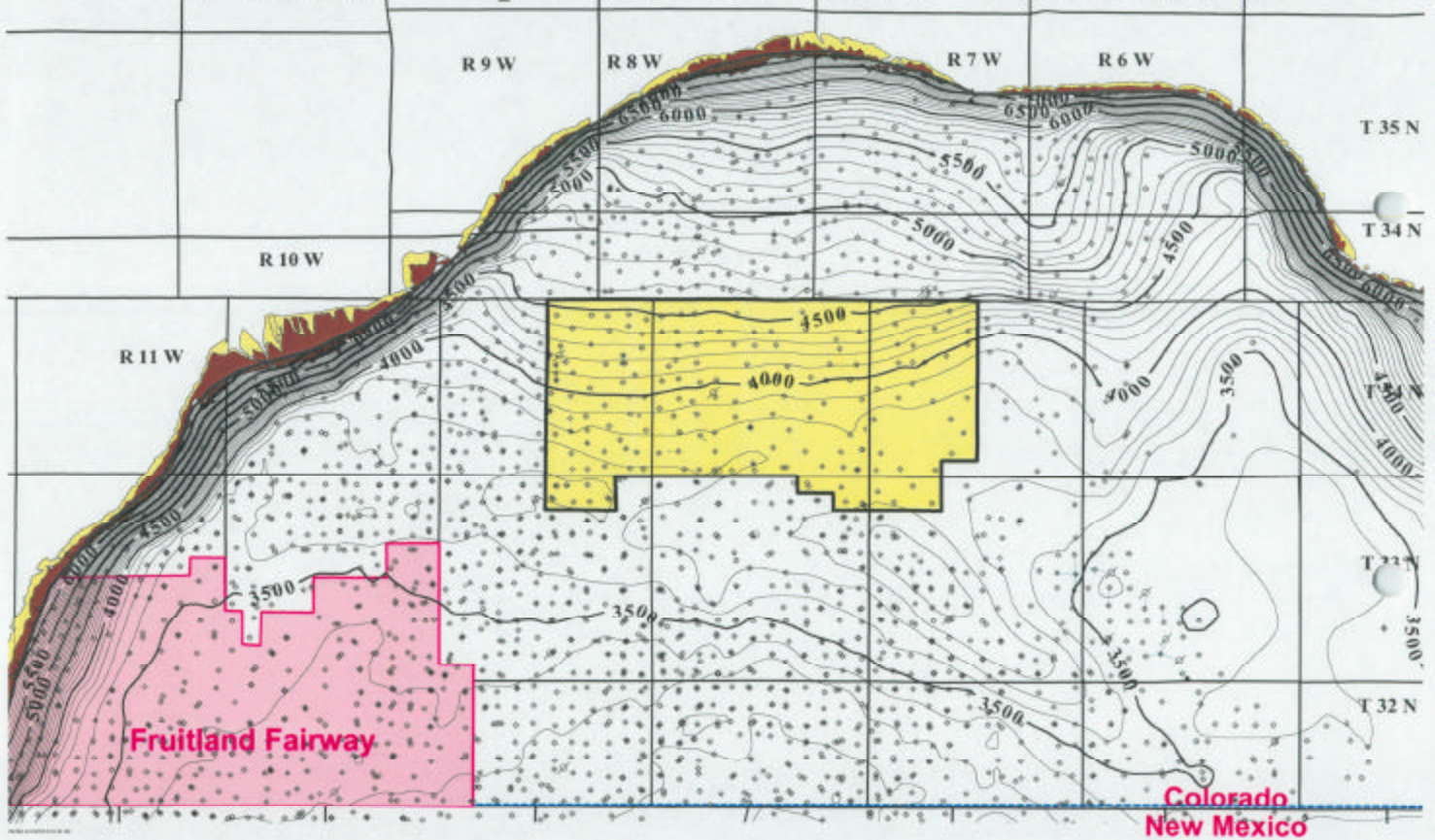
BP AMERICA PRODUCTION COMPANY  
50 UTE ALLOTTEE QU #1  
T34N R8W S19  
NE SW SE



0 200  
Gamma Ray - api units  
1 2  
Bulk Density - gms/cc  
30 -10  
Density Porosity - percent



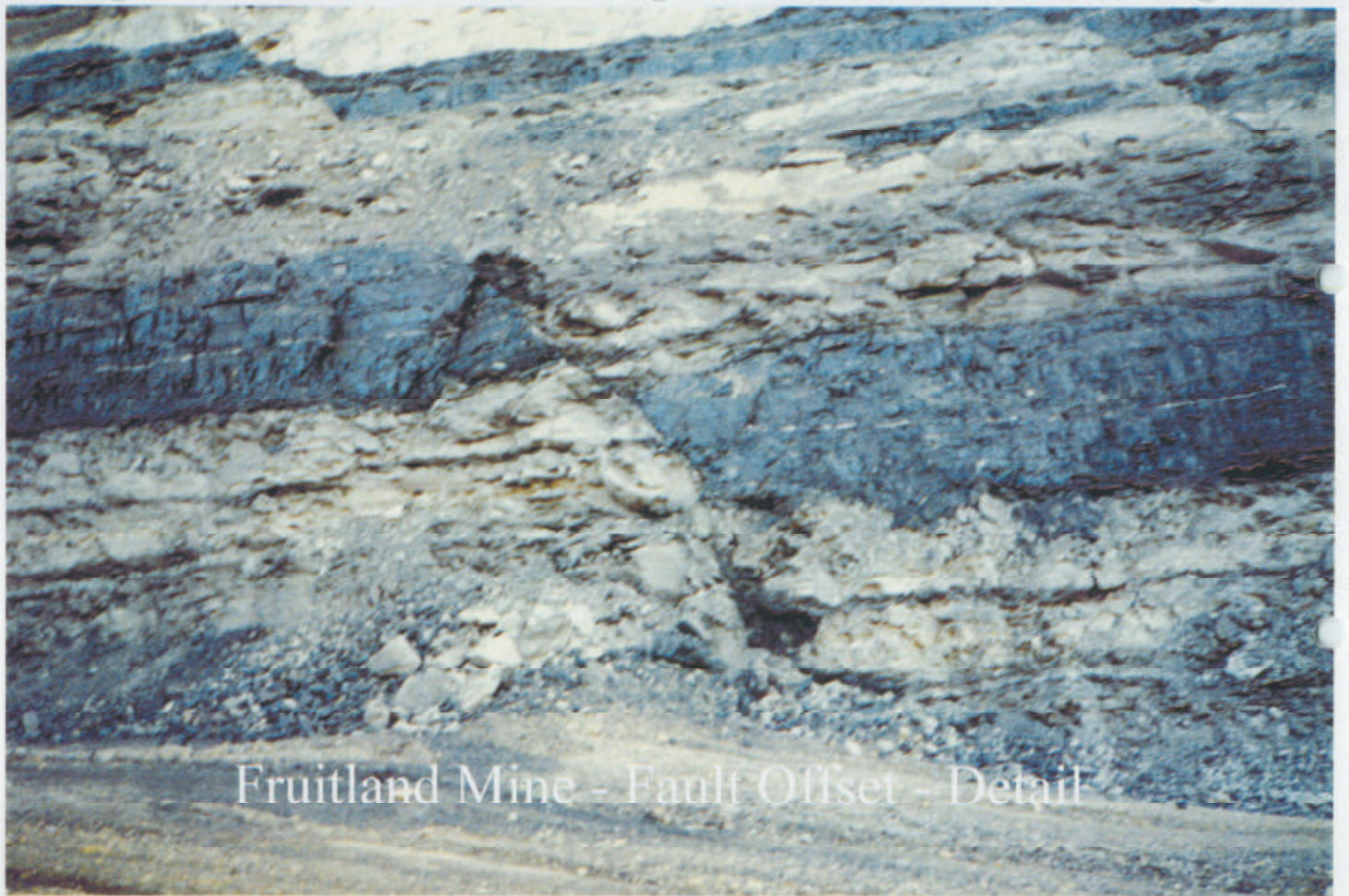
## Structure – Top of Pictured Cliffs / Base Fruitland





Fruitland - Mine Highwall Fault

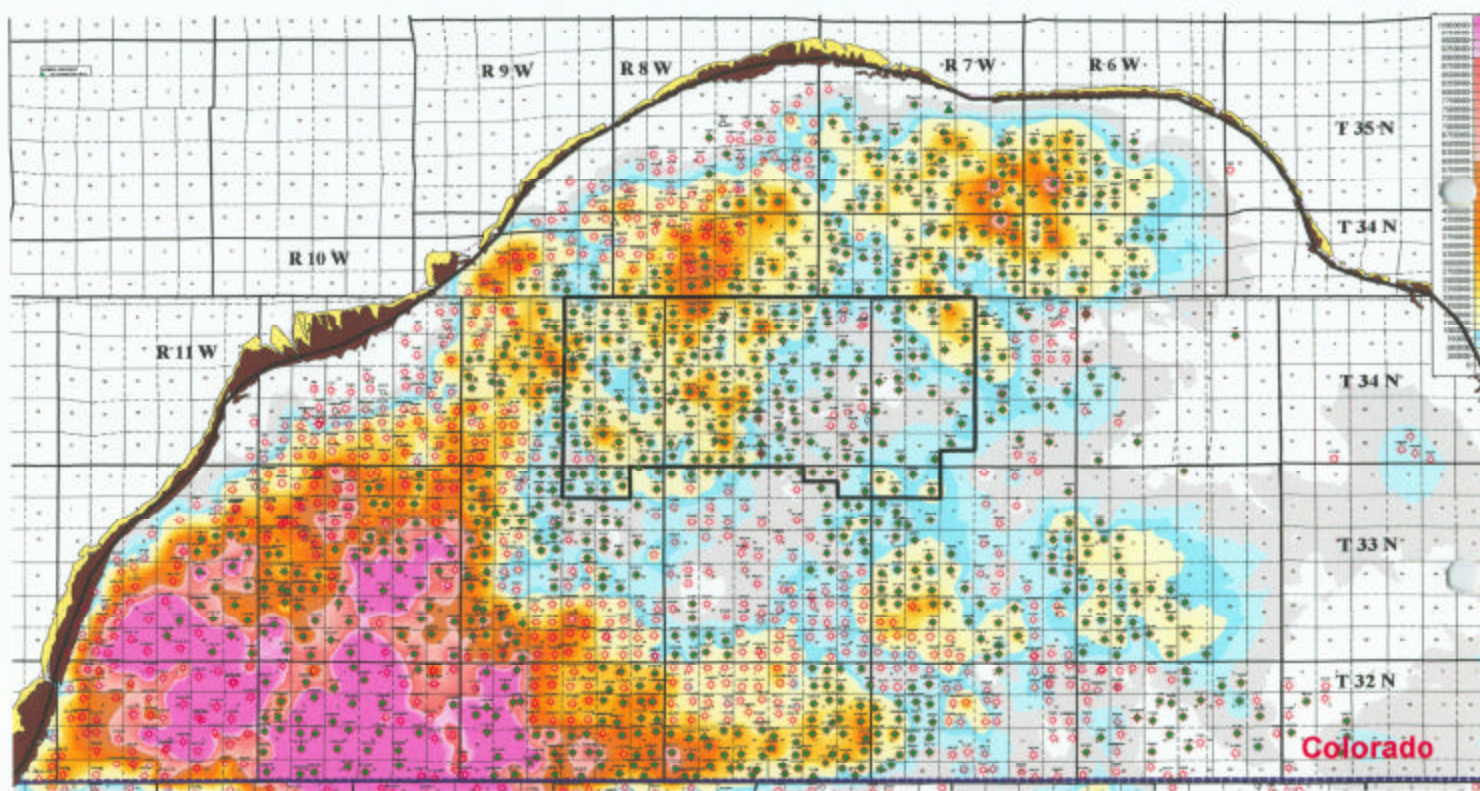




Fruitland Mine - Fault Offset - Detail



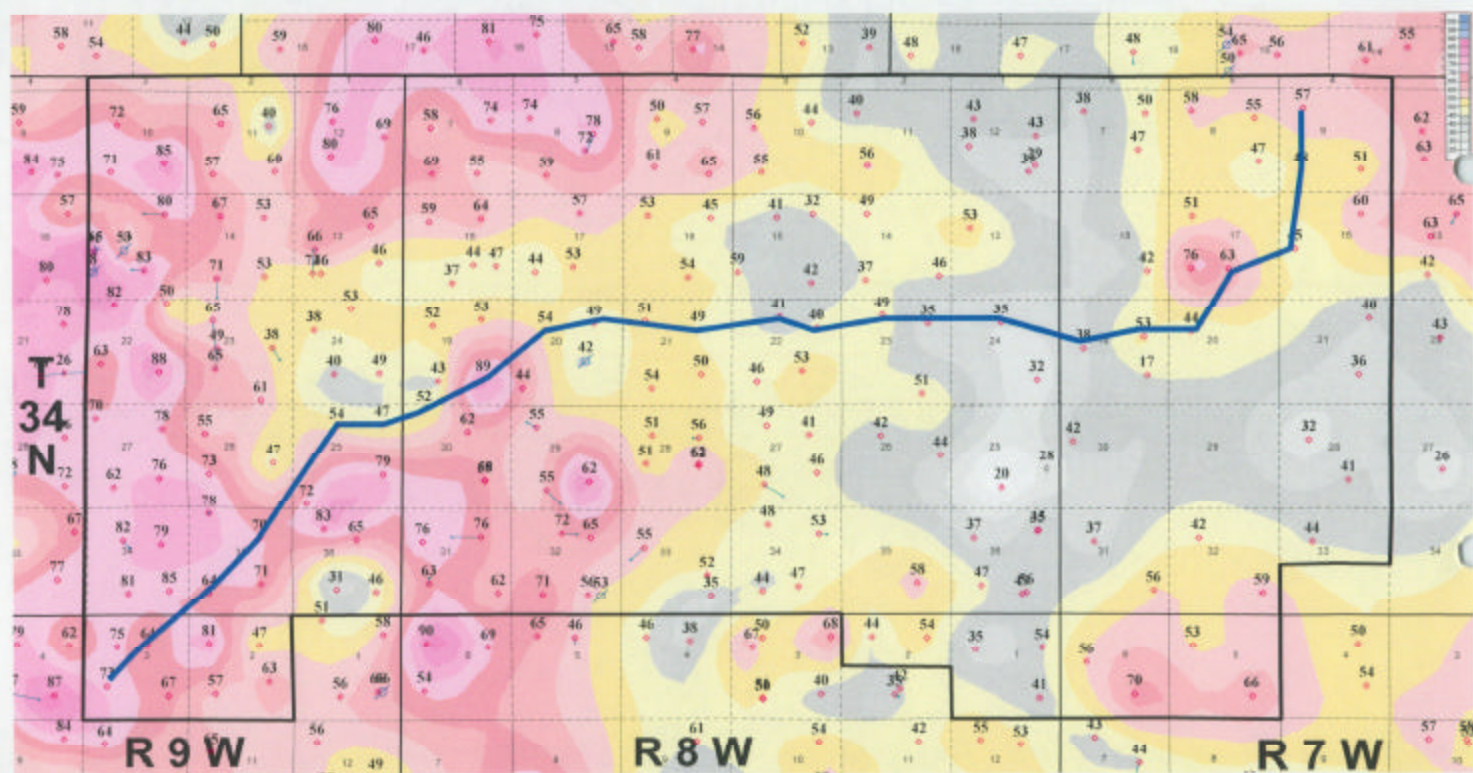
### Fruitland - Cumulative Gas Production - mcf



From Dwights production data – 1/1/2005 latest

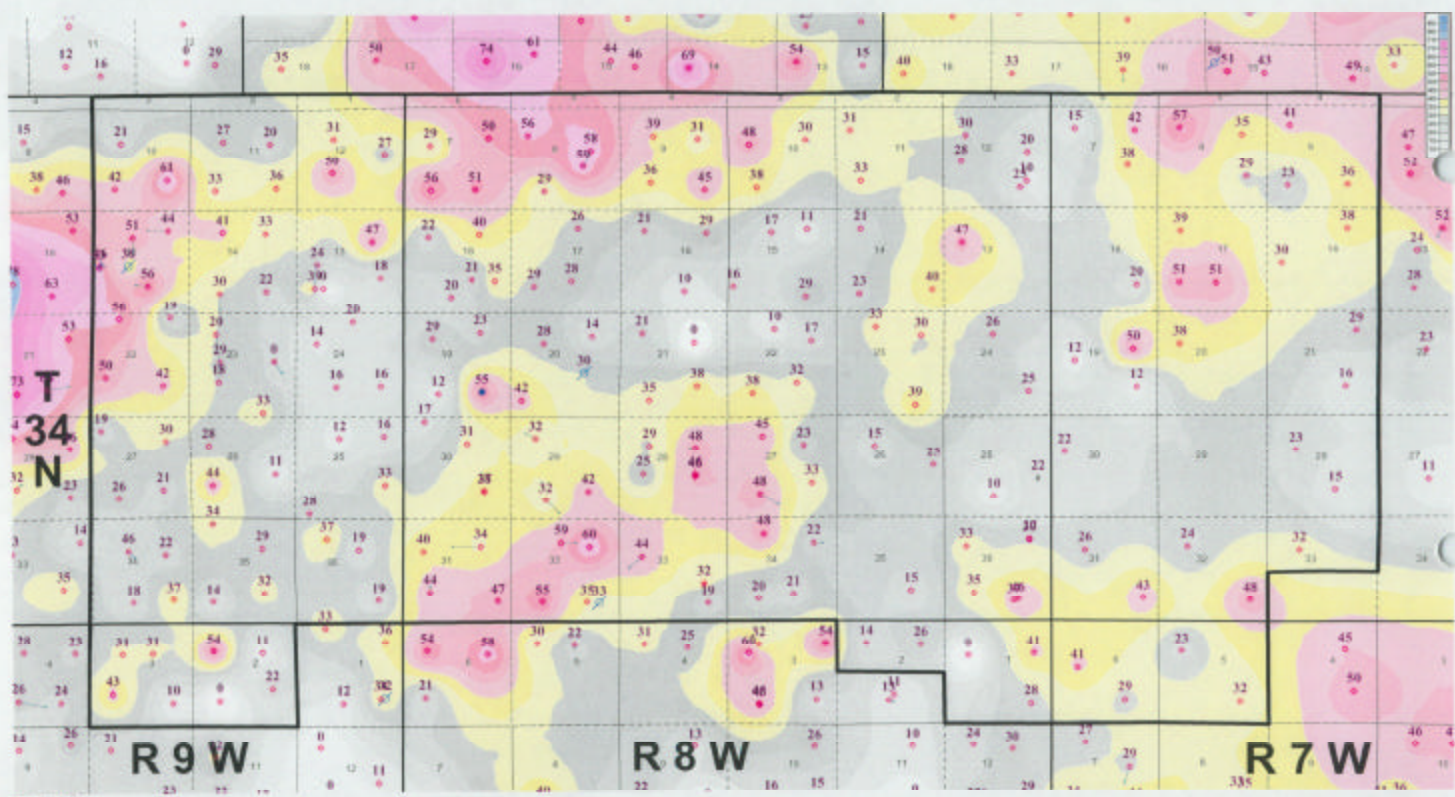
## New Mexico

## Fruitland - Net Coal Thickness - ft. - $\text{gm/cc} > 2.0$





## Fruitland – Thick Coal Seams > 10ft minimum

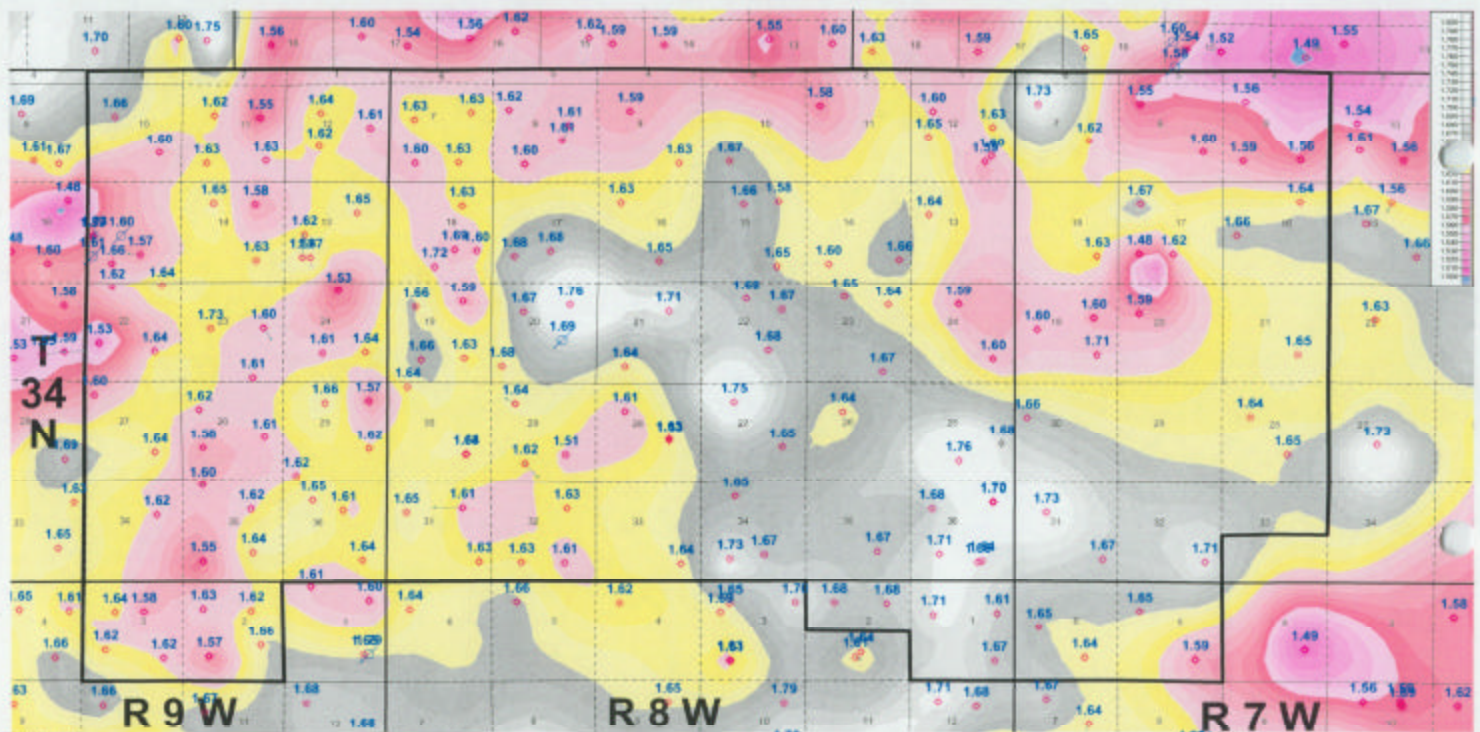








### Fruitland - Average Bulk Density – gm/cc





French GU 1-09U #2R

T34N - R7W - Sec 9 Sw

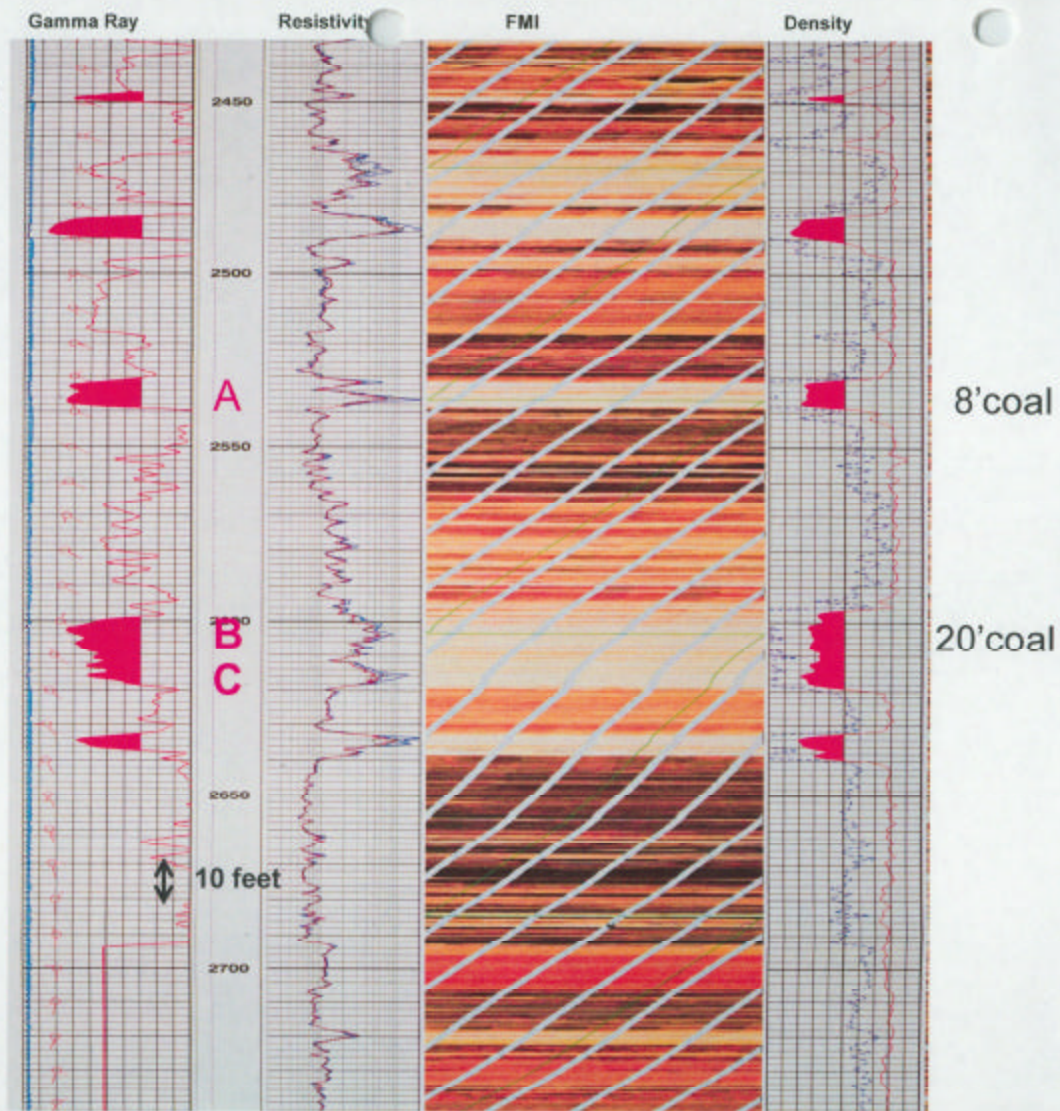
FMI

Formation

Micro

Image

Log



French GU 1-09U #2K

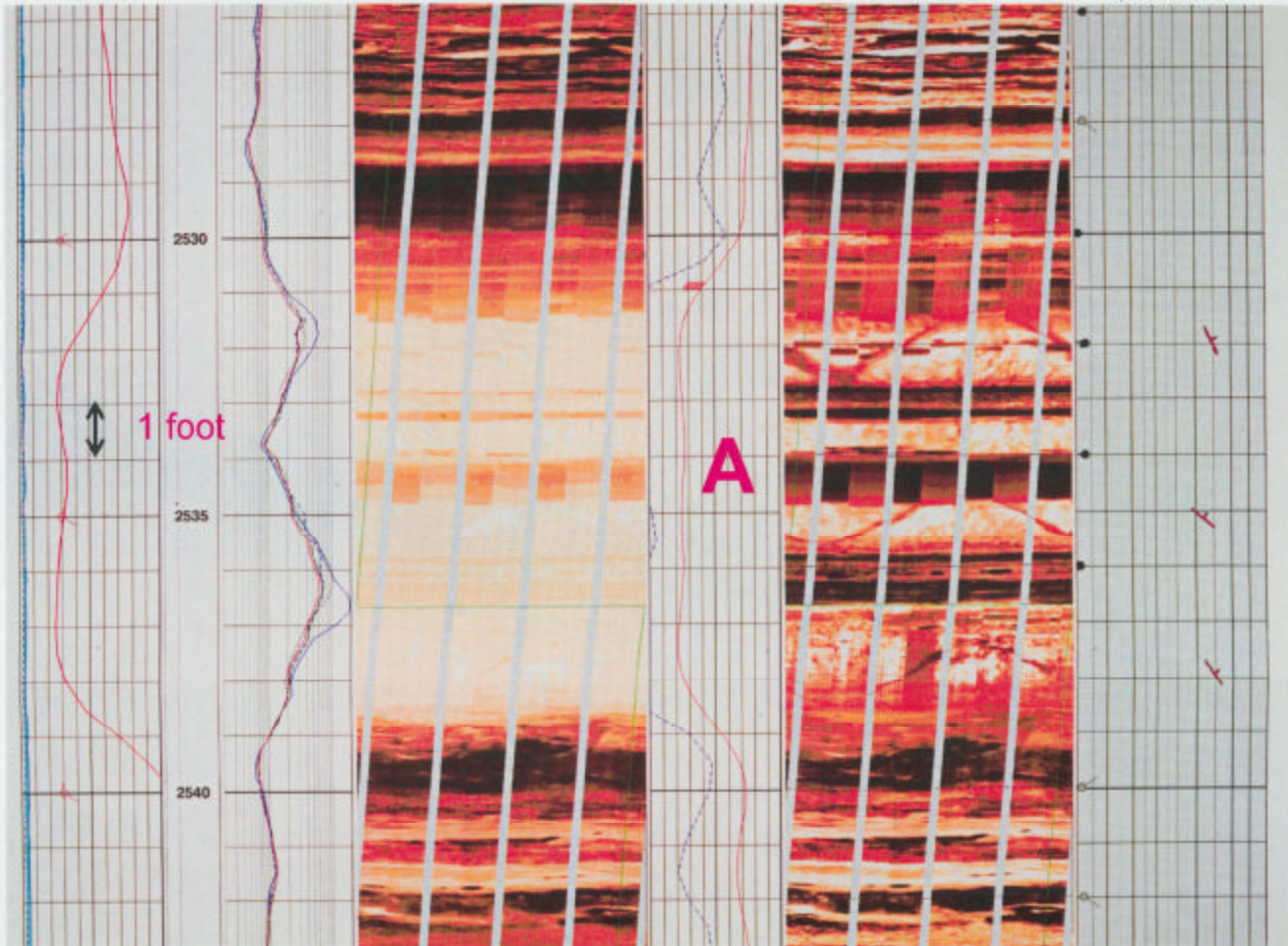
T34N - R7W - Sec 9 Sw

Gamma Ray

Resistivity

Density

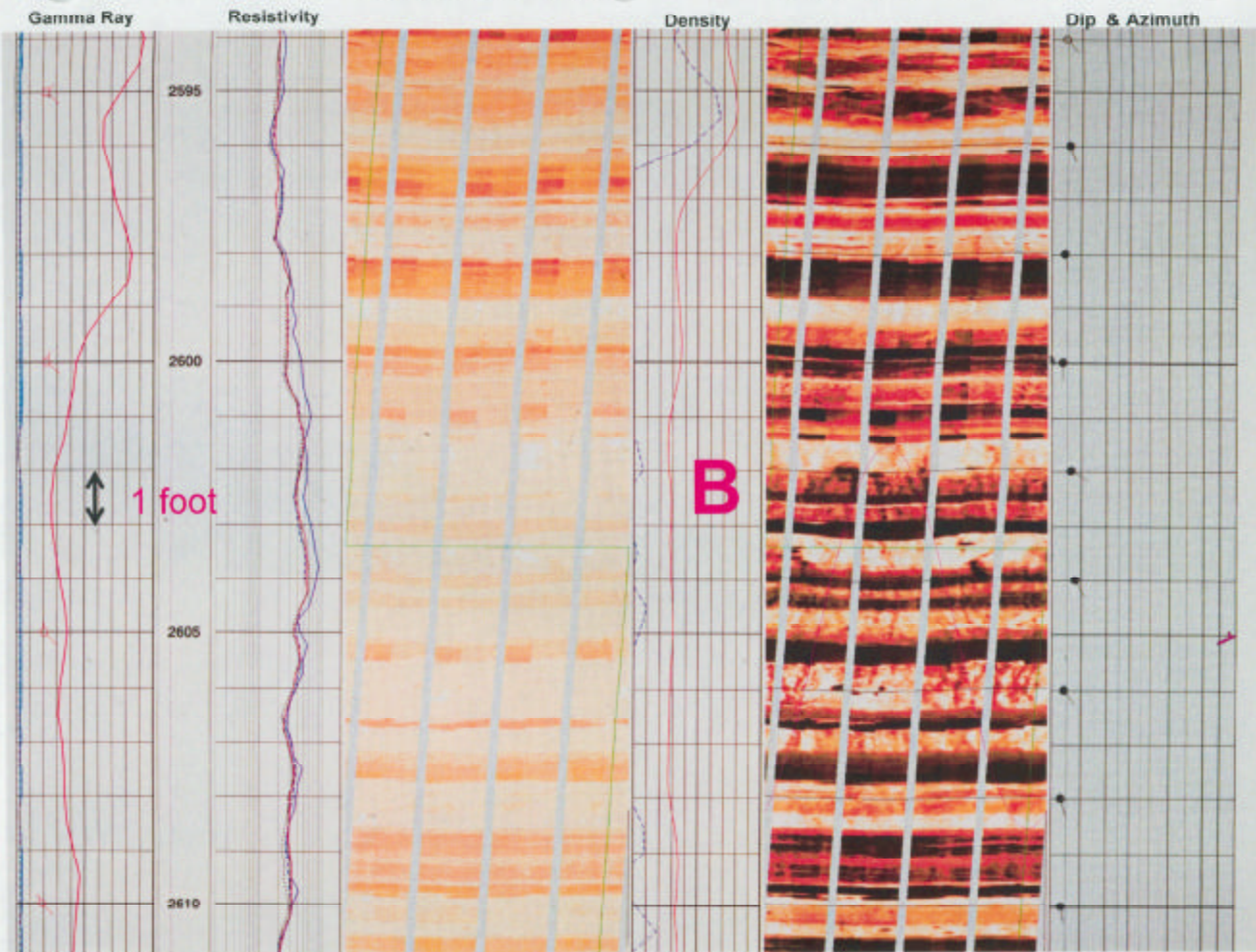
Dip & Azimuth





French GU 1-09U #2

T34N - R7W - Sec 9 Sw



French GU 1-09U #2

T34N - R7W - Sec 9 Sw

