



# Stratigraphic Chart – NW Colorado

4 Petroleum Systems and Geologic Assessment of Oil and Gas in the Southwestern Wyoming Province, Wyoming, Colorado, and Utah

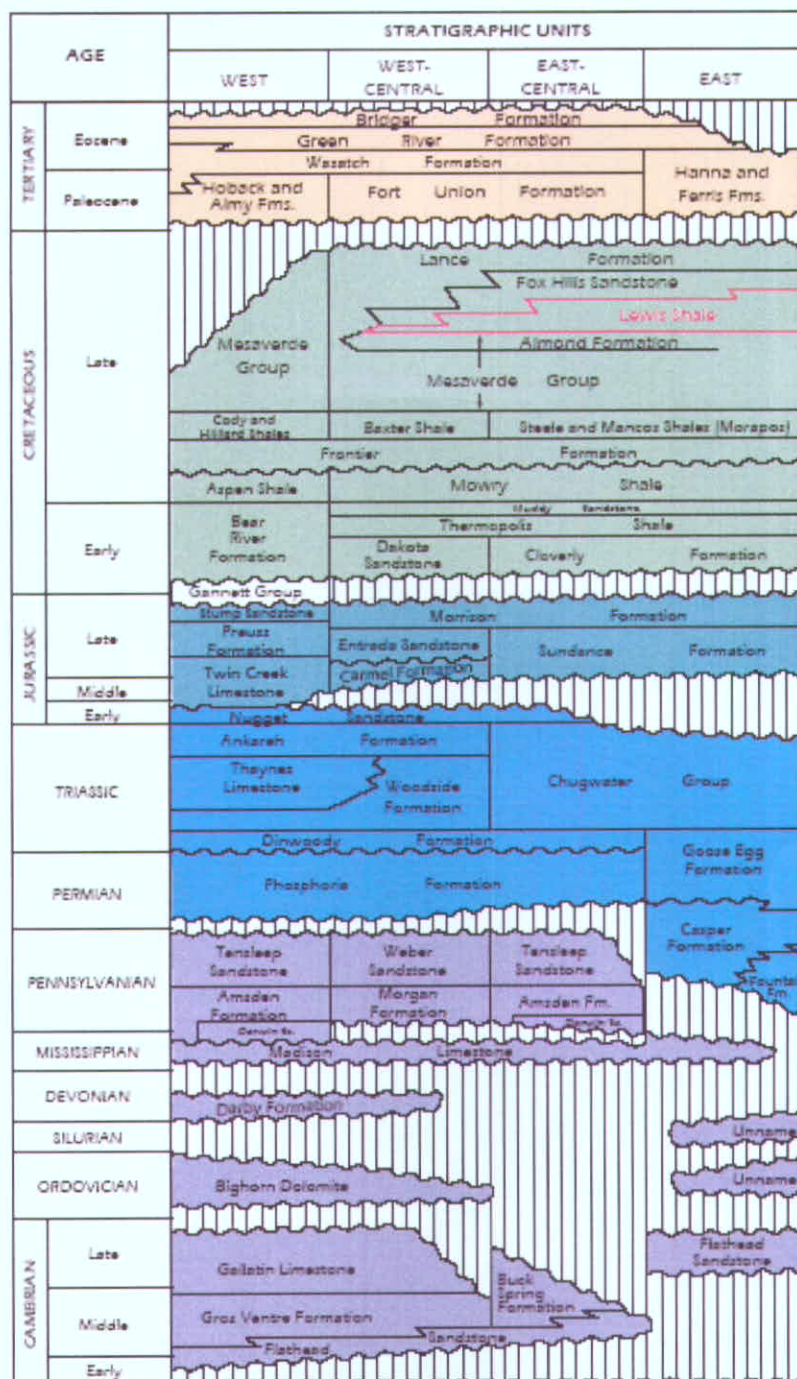


Figure 2. Chart showing formations and stratigraphic relations in the Southwestern Wyoming Province. The Lewis Total Petroleum System is outlined in red.

From USGS Digital Data Series DDS-69-D. Chapter 9, 2005

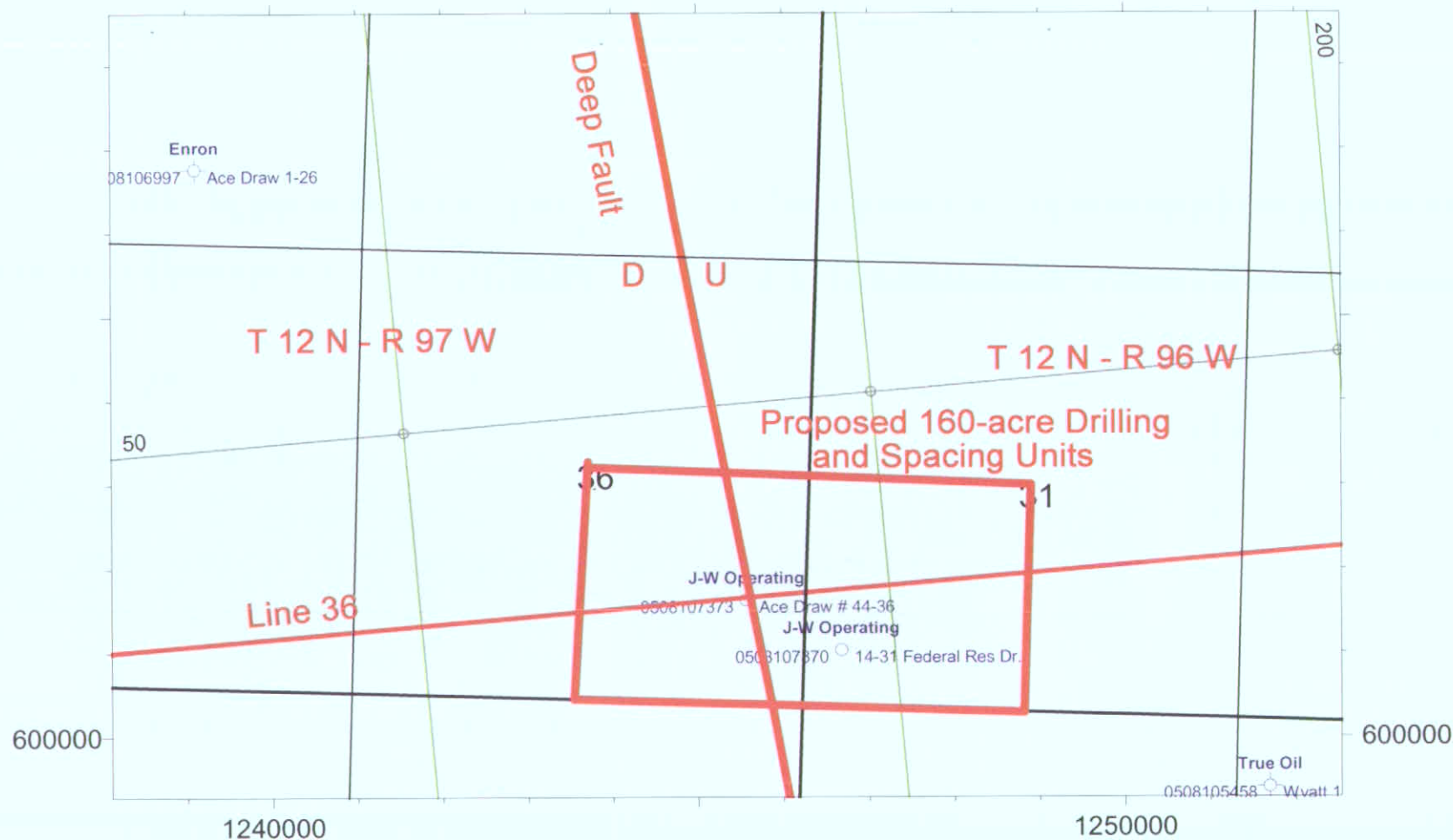


Cause No. 530, Docket No. 0711-SP-31, November 5, 2007  
Exhibit: G-1

X/Y :

1240000

1250000



Cohort Energy Company

Cause No. 530, Docket No. 0711-SP-31

Scale = 1:24000

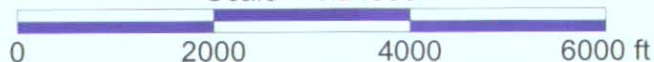
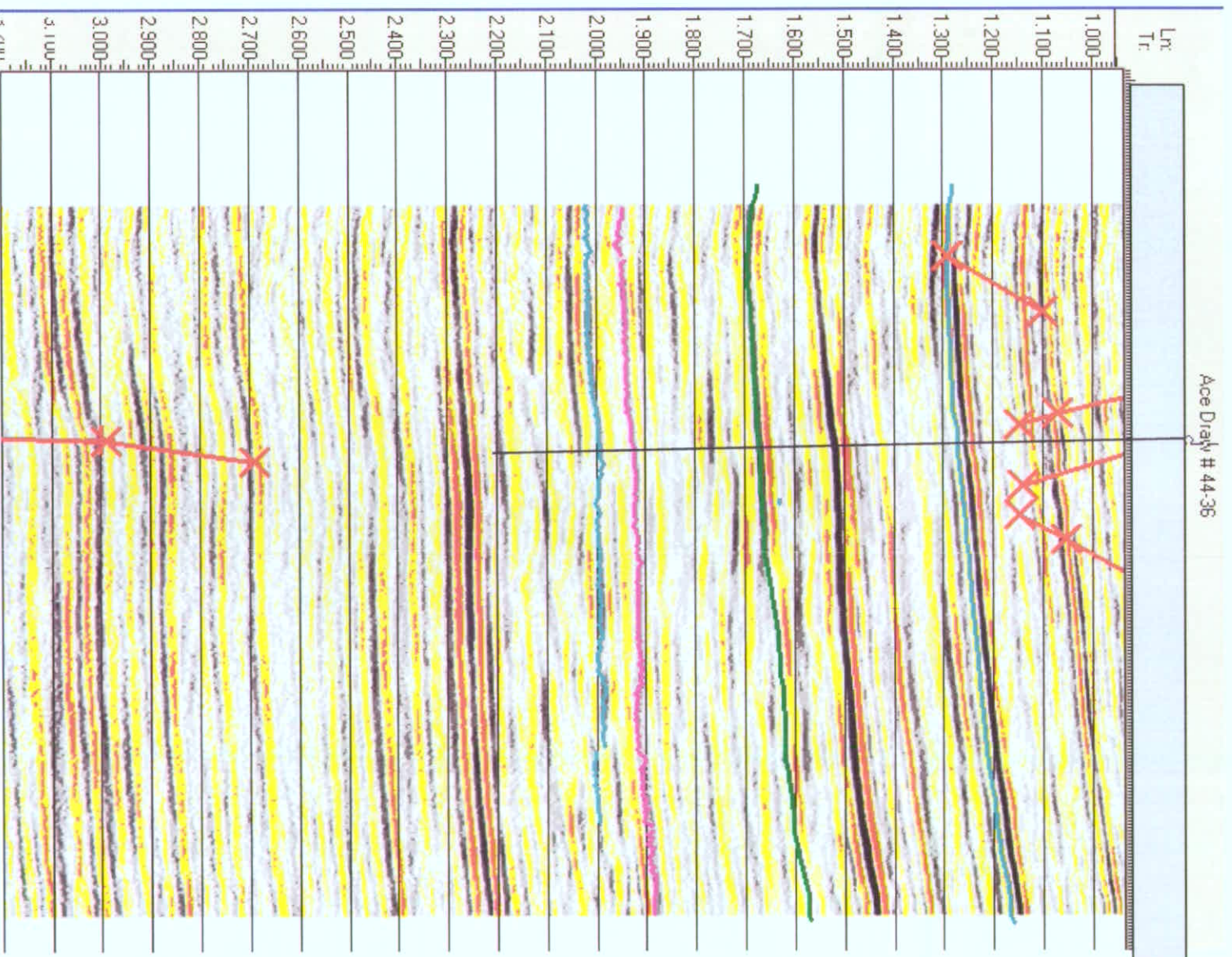


Exhibit G-2  
Location Map  
Proposed 160-acre Drilling and Spacing Units



# Seismic Example (Line 36) – NW Colorado

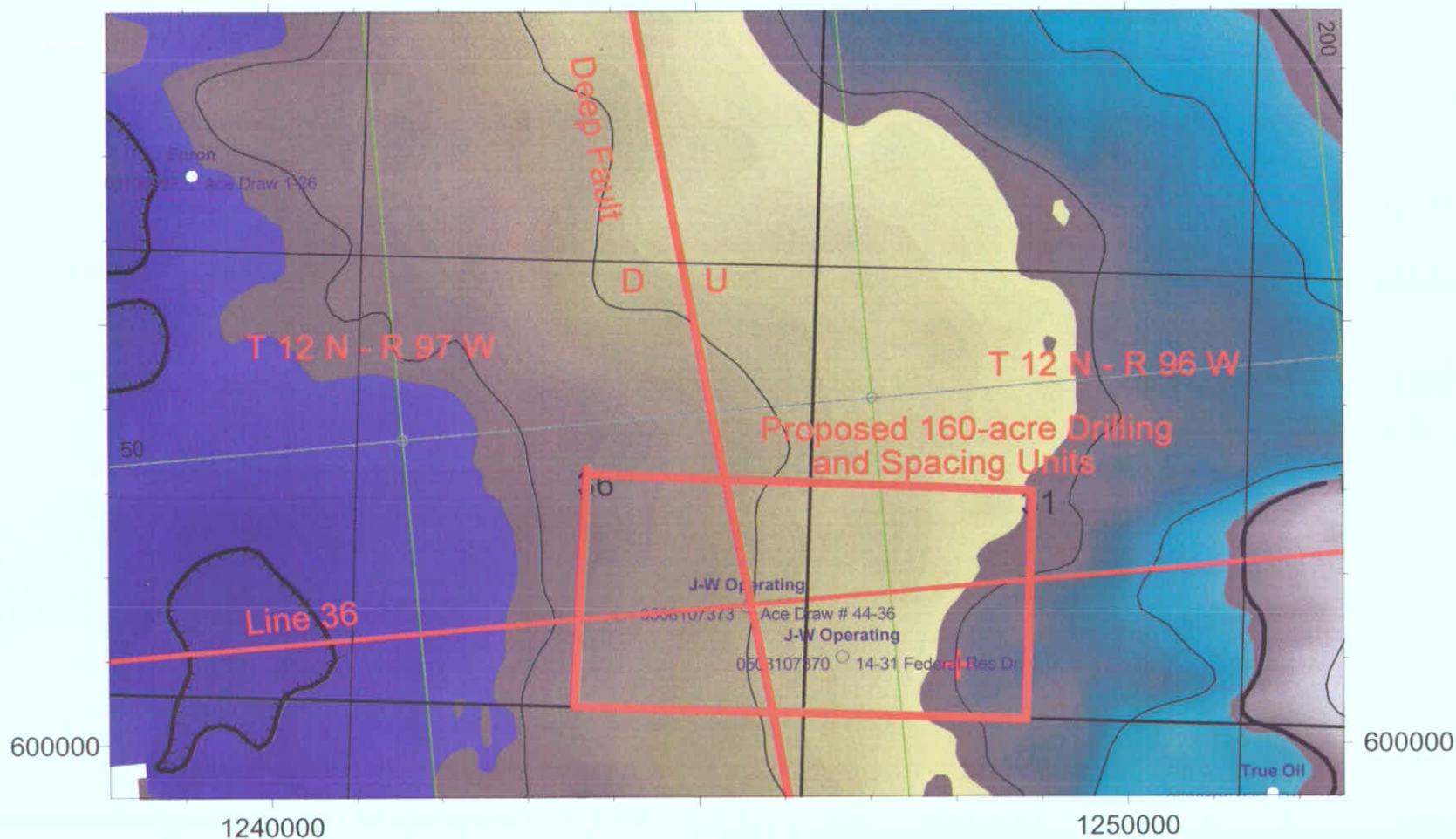


Cause No. 530, Docket No. 0711-SP-31, November 5, 2007  
Exhibit: G-3

X/Y :

1240000

1250000



Cohort Energy Company

Cause No. 530, Docket No. 0711-SP-31

Scale = 1:24000

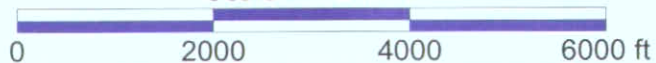
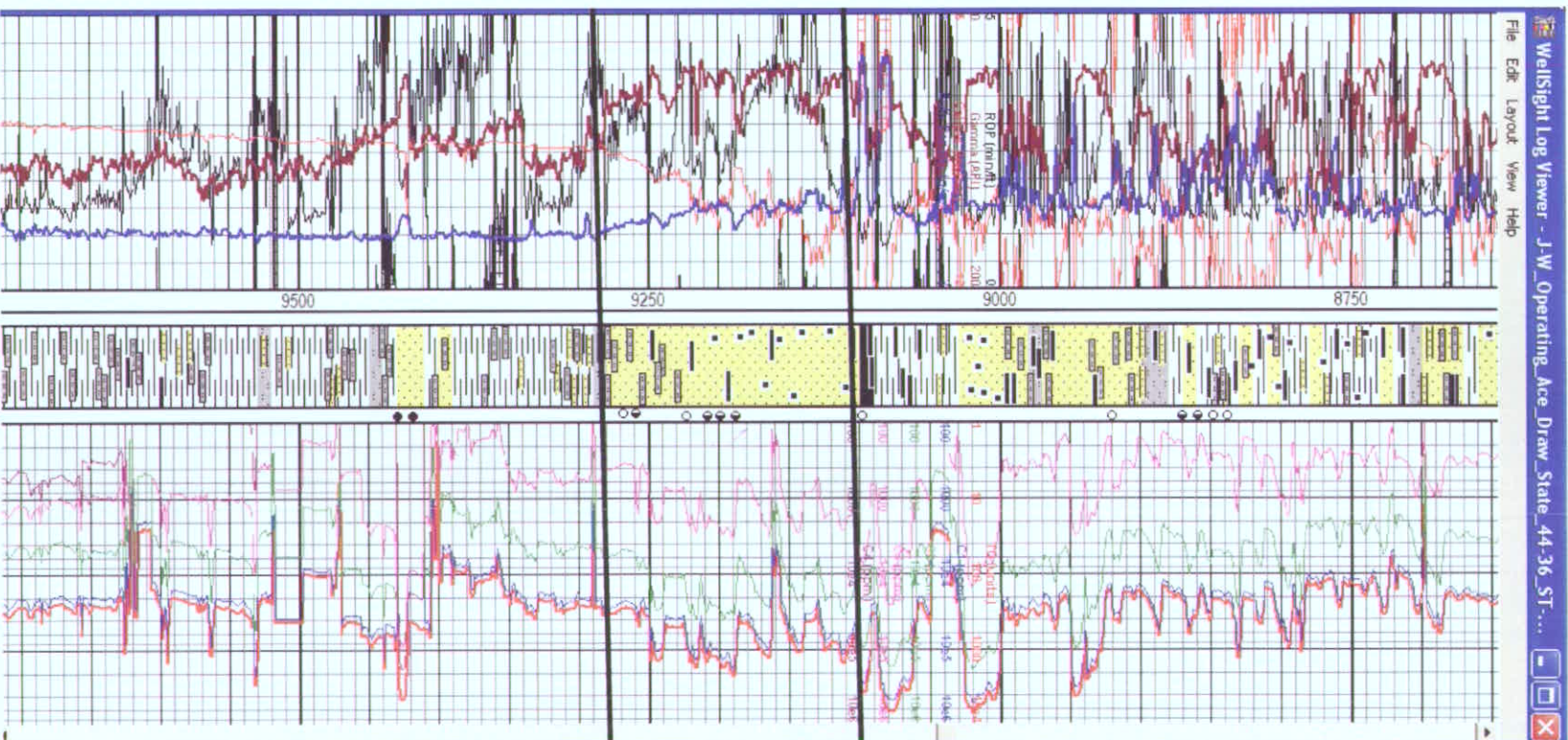


Exhibit G-4  
Time Structure Map - Top Lewis/Base Fox Hills  
C.I.= 10 ms.





# EXHIBIT G-7 - CAUSE NO. 520, DOCKET NO. 0711-SP-31

POWDER MOUNTAIN 34-26-X

ACE DRAW STATE 44-36

LIEBER FEDERAL 32-1



SAMSON / BASIN EXPL

49037241780000

664 FSL 1981 FEL

TWP: 14 N - Range: 96 W - Sec. 26

J-W OPERATING CO

05081073730000

946 FSL 668 FEL

TWP: 12 N - Range: 97 W - Sec. 36

CELSIUS ENERGY

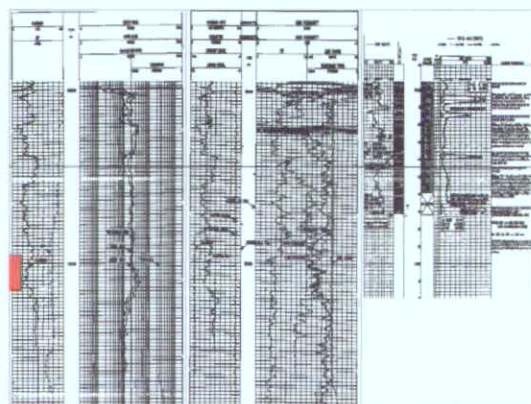
49037223290000

1268 FNL 1377 FWL

TWP: 14 N - Range: 94 W - Sec. 32

74269 ft

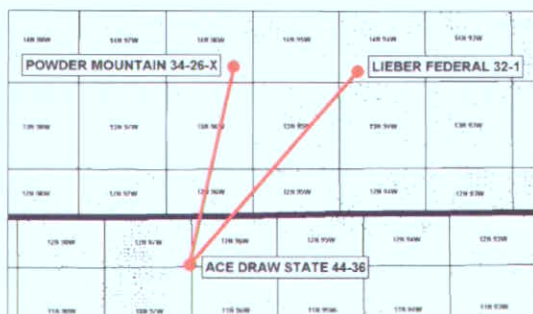
93691 ft



Perf:  
13096-13116

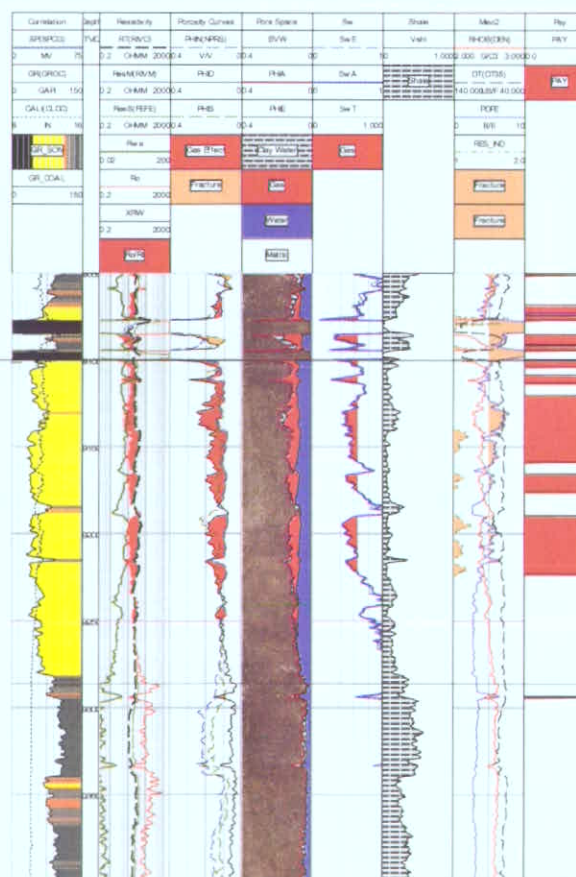
TD=13183

CUM GAS = 5.25 bcf



WY  
CO

FXHL

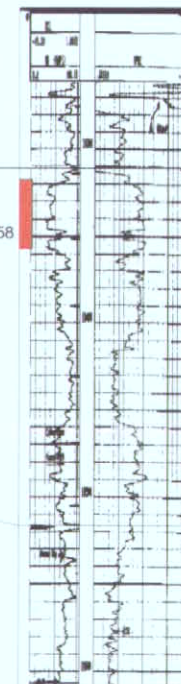


TD=11024

FXHL

Perf:  
10318-10358

LWIS



TD=12930

CUM GAS = .101 bcf

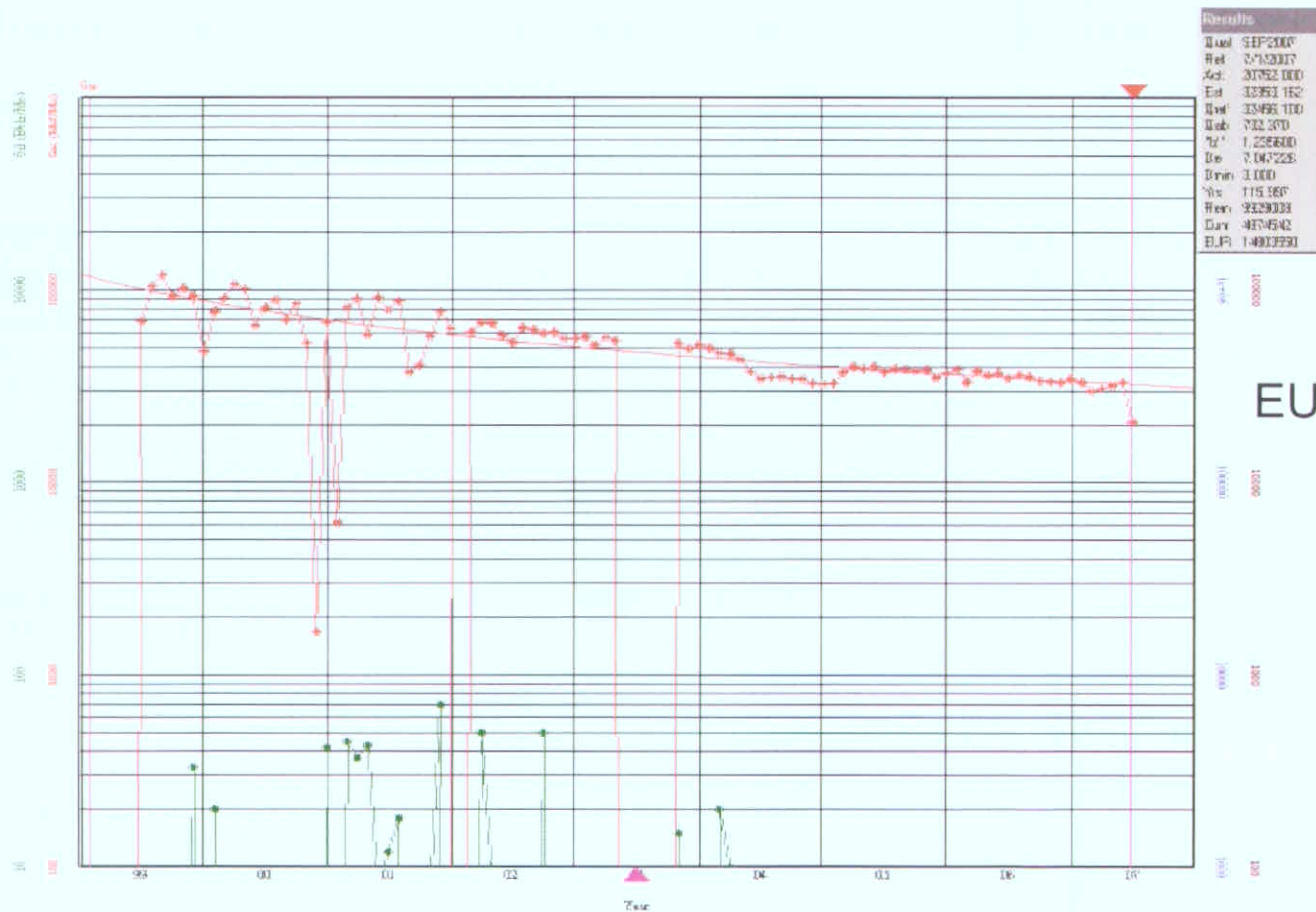




# Exhibit E-2

## Powder Mtn. Fed 34-26

### Production Profile

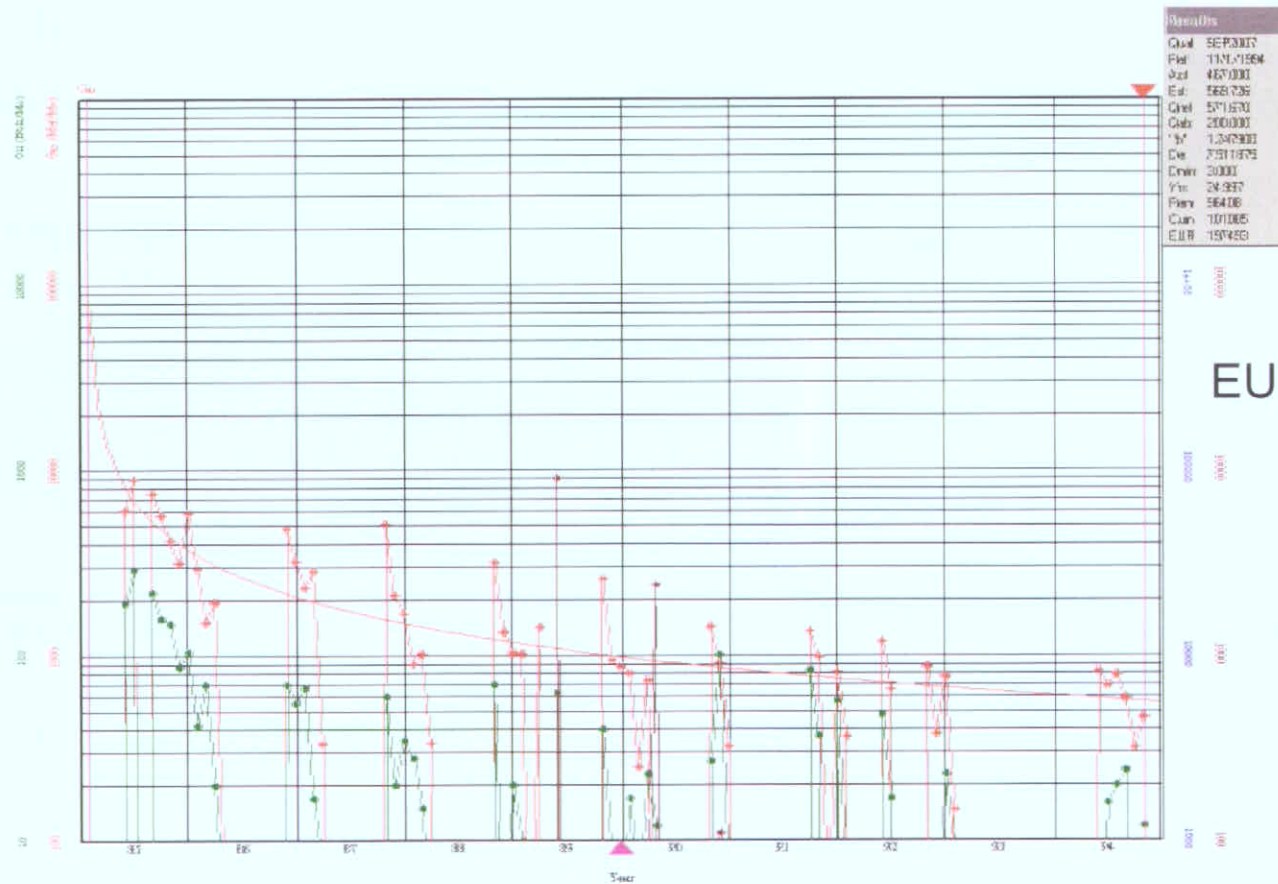


EUR ~14.8Bcf

Cohort Energy Co., Fox Hills  
Spacing, Cause No. 530, Docket  
No. 0711-SP-31

# Exhibit E-5

## Lieber Fed. 32-1 Production Profile



Cohort Energy Co., Fox Hills  
Spacing, Cause No. 530, Docket  
No. 0711-SP-31



# COGCC GIS Online

